



PRODUCT PORTFOLIO

COUPLING TECHNOLOGY, TRANSMISSION & GEARING TECHNOLOGY

ABOUT US

Our **central areas** are **shaft couplings** with **highest precision** and a wide range of applications. Encoder accessories, measuring wheels, gear parts, bevel gears and clamping flanges complete our product portfolio.

ABP Antriebstechnik is a global player but maintained strong local roots in the region of St. Georgen. True to the motto **Think Global- Act Local** we have built up a reliable network of suppliers. This enables us to offer our customers **short delivery times, fast service** and **customised products**.

Together with our engineers, we develop and manufacture a wide range of **customer-specific solutions** in small and medium series. From planning and design to your serial production, we offer individual support - with the highest demands on quality and service.



ABP Antriebstechnik GmbH was founded in 1999 by Wilhelm Ploetz and Bernd Bäuerle in St. Georgen in the Black Forest. In the meantime the founders are retired. The current managing directors are Werner Bösing and Barbara Ploetz.

We are located in the Technology Center in St. Georgen, have 25 employees and an international and a very wide and international customer base. Over the last years the product range has been continuously developed and expanded.

COUPLINGS

ABP Antriebstechnik offers a wide range of different shaft couplings.

From bellows couplings, ideal for precise transmission of rotary motion, to helix couplings, which are a perfect connecting element between motor and threaded spindle, up to the compact design of the spring disc coupling, we have a comprehensive range of accessories for encoders or Servo Step Motors!

BELLOW COUPLINGS



Screw or clamp version
Torque: 15 Ncm to 10 Nm
New in stainless steel A4 1.4404

NICKEL BELLOWS COUPLING



Screw or clamp version
Torque: 13 Ncm to 200 Ncm

HELIX COUPLINGS



Screw or clamp version
Torque : 2 Ncm to 2 Nm

HEAVY DUTY HELIX COUPLINGS



Screw or clamp version
Torque : 0,4 Nm to 22 Nm
New in stainless steel 1.4305

SPRING DISC COUPLINGS



Screw or clamp version
Torque: 40 Ncm to 400 Ncm

SPRING COUPLINGS



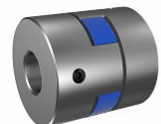
Screw version
Torque: 15 Ncm to 150 Ncm

DOUBLE LOOP COUPLINGS



Screw version
Torque : 0,5 Nm to 5 Nm
New in stainless steel 1.4305

JAW COUPLINGS



Screw or clamp version
Torque : 8 Nm to 25 Nm
New in stainless steel 1.4305

CROSS SLOTTED COUPLINGS



Screw or clamp version
Torque : 20 Ncm to 80 Ncm

FRICITION COUPLINGS



Screw or clamp version
Torque: 30 Ncm to 120 Ncm

MEASURING WHEELS & ENCODER ACCESSORIES

MEASURING WHEELS

Aluminium measuring wheels for **precise length measurement** of various materials, available with different surfaces (cross-knurled, smooth, studded, corrugated) **very good concentricity** and **highest measuring accuracy**, reduced mass due to optimized design

High resistance to oils, fuels, ozone and weather influences as well as optimum wear values under high mechanical stress

Circumference: from 200mm to 500mm

NEW available in inch sizes.



MOUNTING BRACKET SPRING LOADED

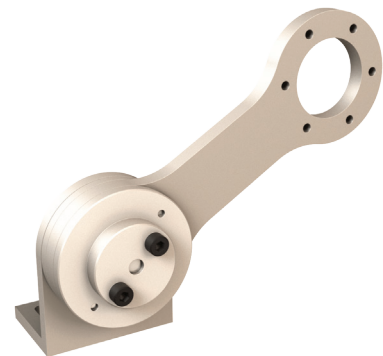
High quality manufactured spring mounting bracket for encoder mounting in combination with a measuring wheel of 305mm or 500mm circumference, different mounting holes allow the **optimal positioning of the encoder**. The precisely-tuned suspension guarantees a permanent pressure of the measuring wheel on the object.

SPRING LOADED ARM DAAF 60120

The spring loaded arm is optimally suited to ensure **precise and reliable length measurement** in combination with a measuring wheel and encoder at a **higher spring travel**. The 6 mounting holes, each 60° offset on a pitch circle of 48 mm, ensure optimum alignment and mounting of the encoder.

The spring arm can be mounted from both sides, so the direction of the spring load can be changed.

The preload and the resulting contact pressure are individual adjustable through the clamp fastening.



TOOTHING COMPONENTS & GEARBOXES



BEVEL GEARBOXES

Closed or open design
Various transmissions

Torque: 35 Ncm to 250 Ncm



WORM GEARBOXES

Closed design
Various transmissions

Torque: max. 80 Ncm



TOOTHING COMPONENTS

Bevel gears, worms, worm gears as well as spur gears and hollow gears are available in sizes from module 0.2 mm to module 2 mm.

Special designs in various materials are available.

The appropriate product is not listed? Please contact us, we will be pleased to give you advice and will find the ideal solution for your application.



ABP ANTRIEBSTECHNIK GMBH

Leopoldstraße 1
78112 St. Georgen
Germany
Tel. +49(0)7724 58008-0
Fax +49(0)7724 58008-01
E-Mail: info@abp-antrieb.de
Internet: www.abp-antrieb.de