



75
YEARS

YOUR PARTNER FOR HIGH- TECHNOLOGY MACHINING **PRESENTATION**

Twenty-four hours a day, 365 days a year, we are meeting the challenges of our customers in our workshop with its ultra-modern machine park.

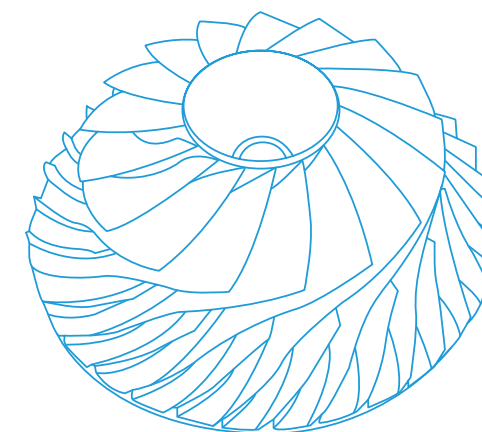
THE COMPANY

OUR PHILOSOPHY

*PRÄWEST WAS FOUNDED IN 1945 AND SINCE THEN
HAS CONTINUED TO DEVELOP AS A DYNAMIC
AND INNOVATIVE COMPANY.*

Twenty-four hours a day, 365 days a year, we are meeting the challenges of our customers in our workshop with its ultra-modern machine park.

A relationship of mutual trust has grown between ourselves and our customers based on decades of successful cooperation. The basis for this is our highly qualified and motivated staff.





OWNERS:

Dipl.-Ing. Reiner Wahlers (30%) & Birte Jung-Hollmann (35 %)

Kerstin Damm (35 %)

1945_ PRÄWEST was founded in Bremen by Heinz Hampel.

1978_ Dr. Ing. Heinz-Rudolf Jung buys PRÄWEST as Mr. Hampel retires.

1986_ The first 5-axis milling machine and the first CNC coordinate measuring machines are commissioned.

1990_ PRÄWEST moves into larger premises in the Martinsheide 7, Bremen.

2000_ Dipl.-Ing. Reiner Wahlers is named Managing Director of PRÄWEST with Dr. Jung.

2003_ PRAE-TURBO is founded by Dr. Jung and Mr. Wahlers.

2011_ Further expansion of the production facilities to 6800m².

2013_ Dr. Benjamin O'Shea is named as the second Managing Director of PRÄWEST alongside Dipl.-Ing. Reiner Wahlers.

2014_ PRAE-AERO is founded by Mr. Reiner Wahlers and Dr. Benjamin O'Shea.

2015_ Sale of PRAE-TURBO.

2018_ Champion Precision (Xi'an, China) is founded as a Joint Venture.

2020_ 75 Years of PRÄWEST.





THE COMPANY *OUR PHILOSOPHY*

75
YEARS



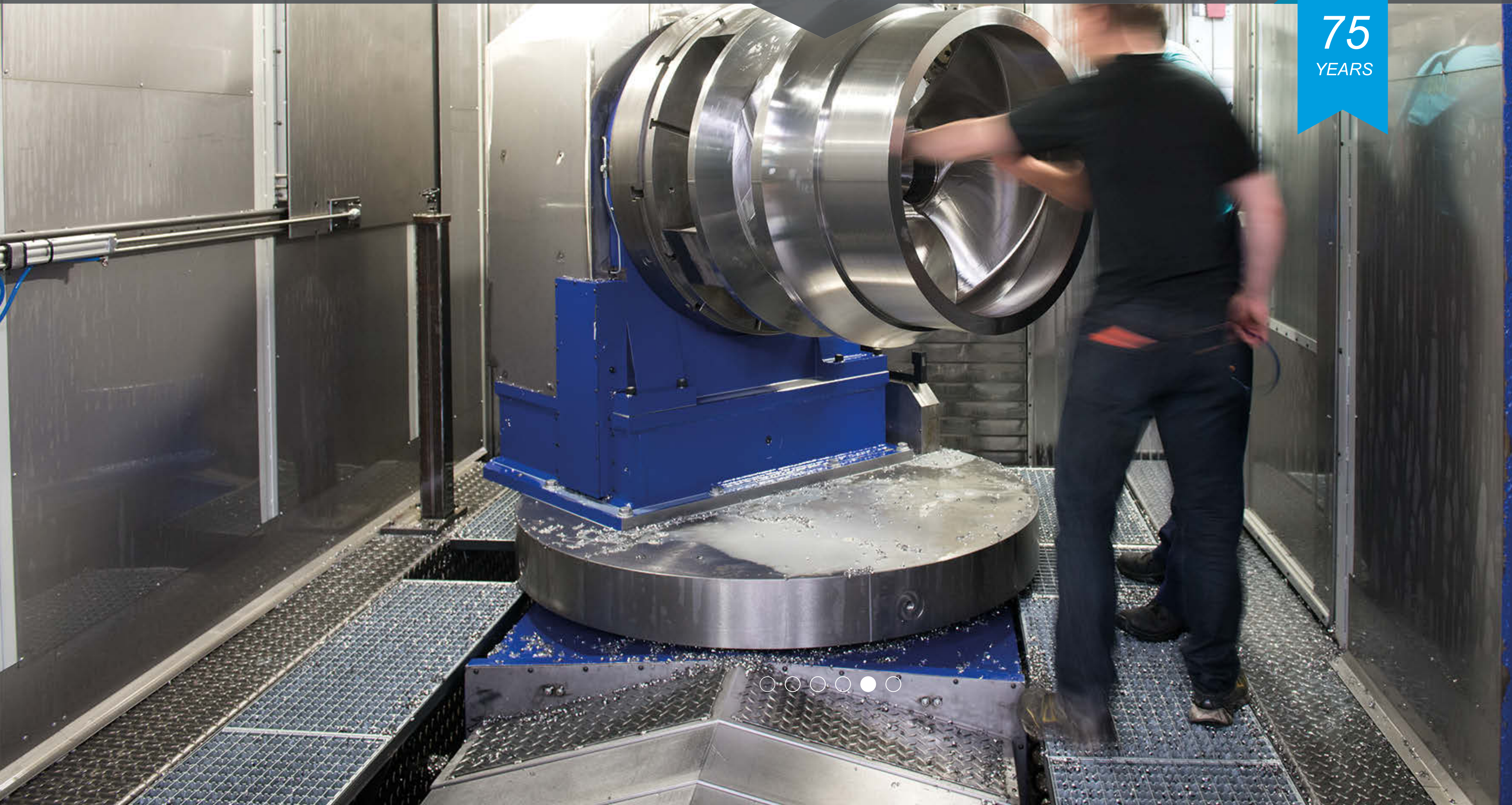


PRAWEST

THE COMPANY OUR PHILOSOPHY

75
YEARS

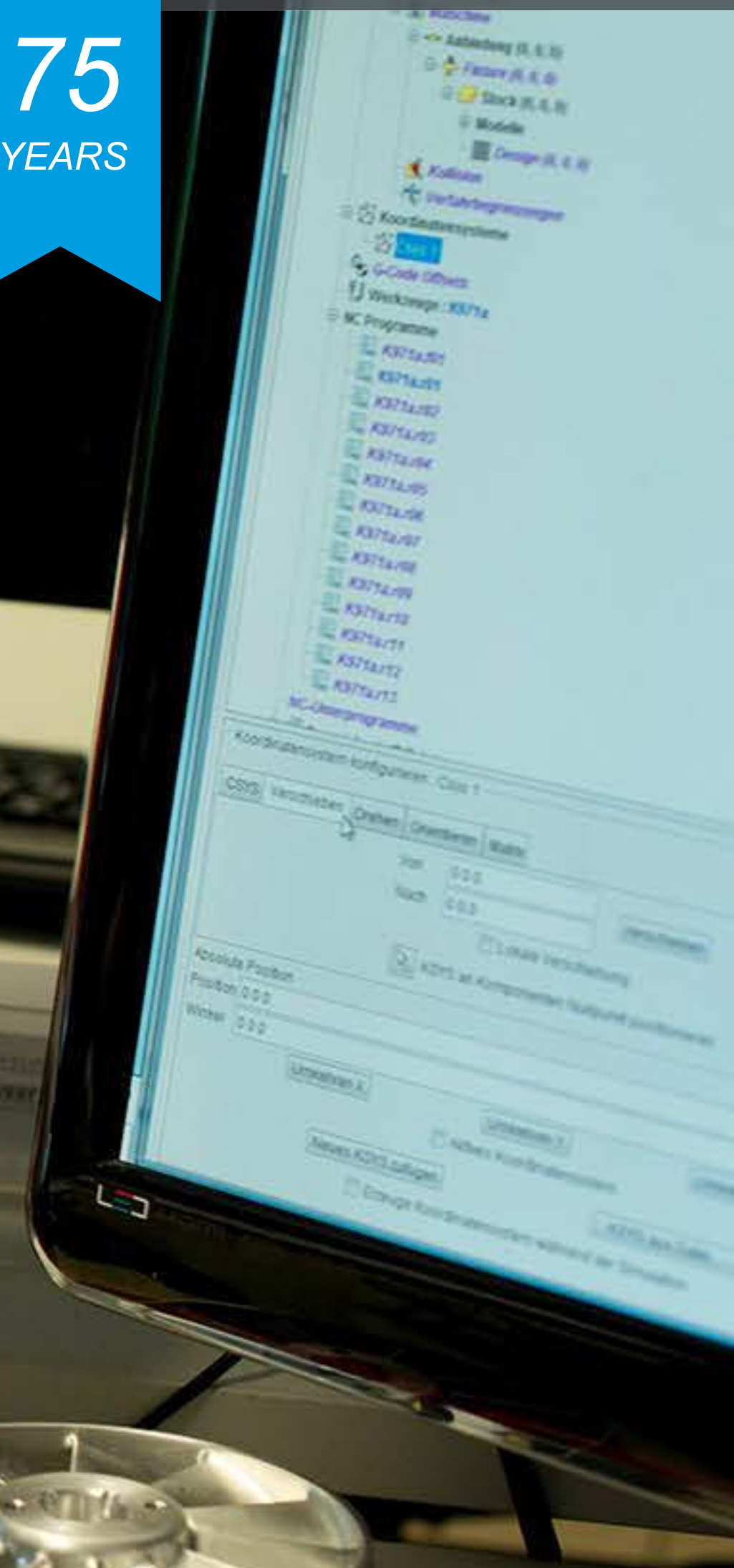
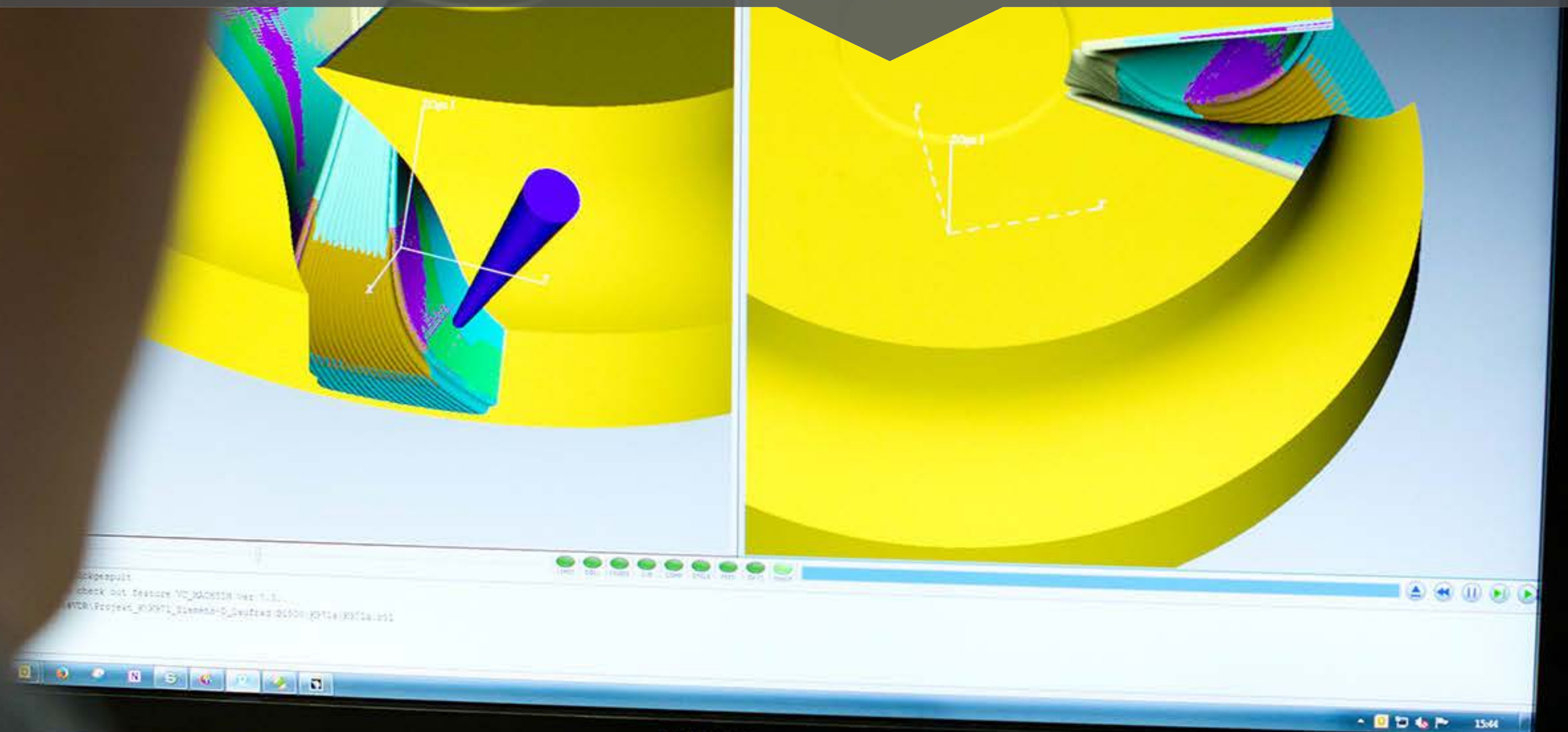




PRAWEST

THE COMPANY OUR PHILOSOPHY

75
YEARS



**PRÄWEST OPERATES IN SEVERAL
INDUSTRIAL SECTORS:**

AVIATION AND AEROSPACE

TURBINES (STATIONARY AND AIRBORNE)

CHEMICAL INDUSTRY

VACUUM TECHNOLOGY

*TURBO-CHARGER COMPRESSOR AND
TURBINE WHEELS*

ENERGY INDUSTRY

OIL & GAS INDUSTRY



OUR PRODUCTS *MACHINING COMPLEX PARTS*

75
YEARS

THE QUALITY OF OUR PRODUCTS
IS OUR HIGHEST PRIORITY.



**PRÄWEST MILLS, TURNS AND GRINDS THE
FOLLOWING MATERIALS:**

ALUMINUM

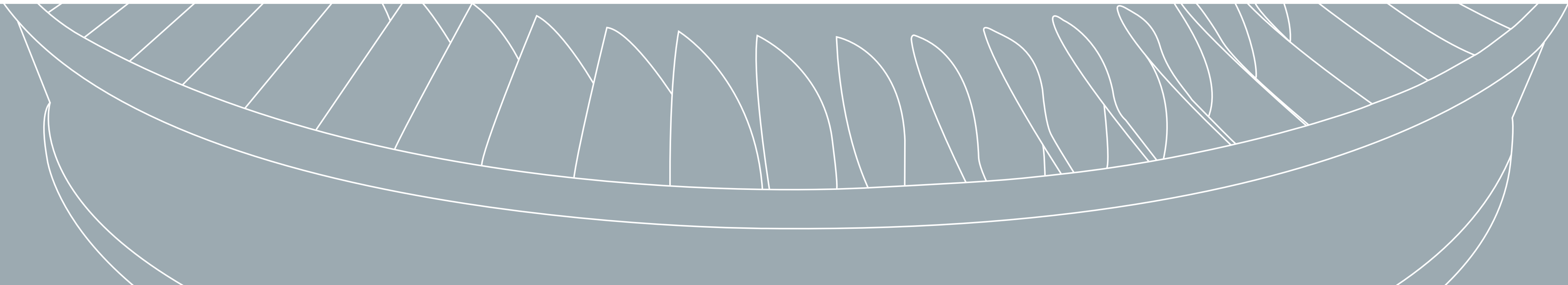
TITANIUM

INCONELL / WASPALLOY

*17-4 PH AND OTHER STAINLESS /
HEAT RESISTANT ALLOYS*

IMI 834

TITANALUMINID



IMPELLER/BLISKS

*FOR TURBINES, COMPRESSOR IMPELLERS AND
TURBINES (SHROUDED AND CONVENTIONAL)
IMPELLER WHEELS FOR TURBINE*



IMPELLER/BLISKS

*SIZE IS ONLY LIMITED BY THE WEIGHT OF THE RAW MATERIAL (MAX: 11 TONNES)
AND A MAXIMUM DIAMETER OF 2500 MM.*



Shrouded impeller, dia.
1500 mm, stainless steel



ESS vane



Shrouded impeller, dia.
750 mm, stainless steel



IMPELLER/BLISKS

*SIZE IS ONLY LIMITED BY THE WEIGHT OF THE RAW MATERIAL (MAX: 11 TONNES)
AND A MAXIMUM DIAMETER OF 2500 MM.*



Titanium blisk, dia. 500 mm



Aluminium blisk



Compressor rotor (Titanium)

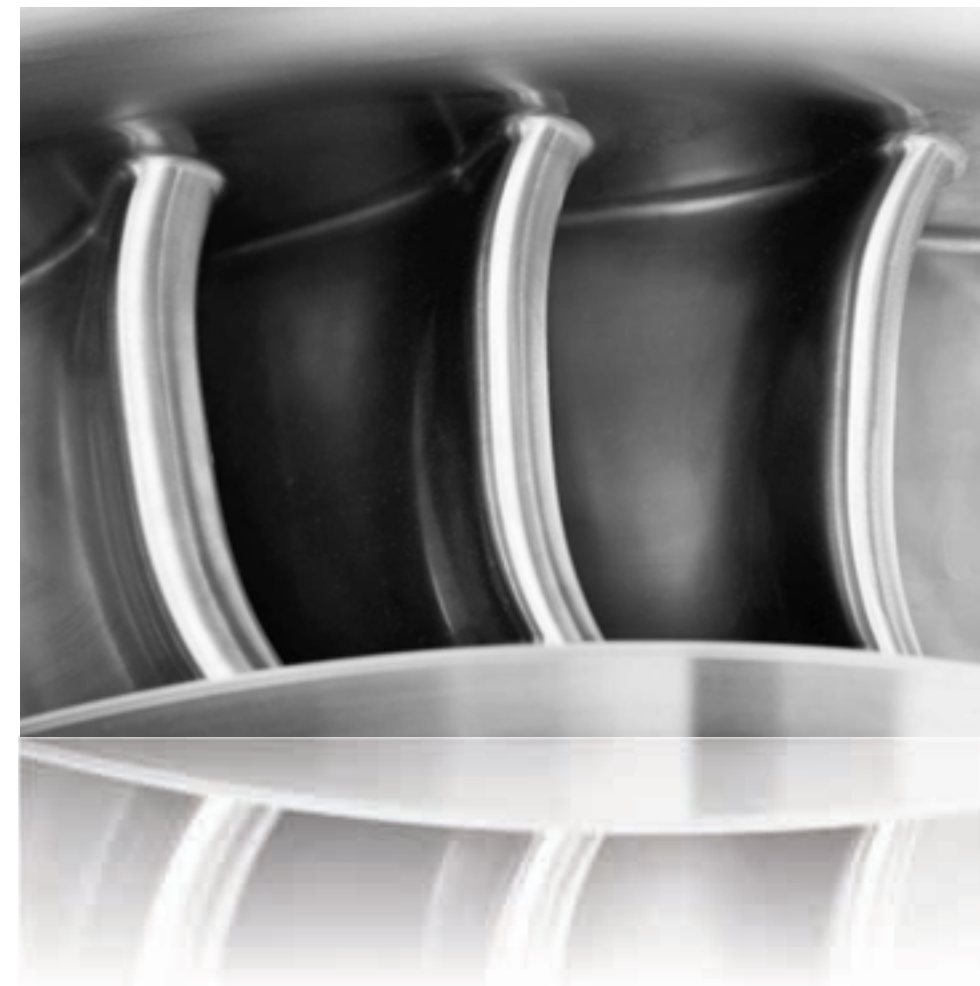


IMPELLER/BLISKS

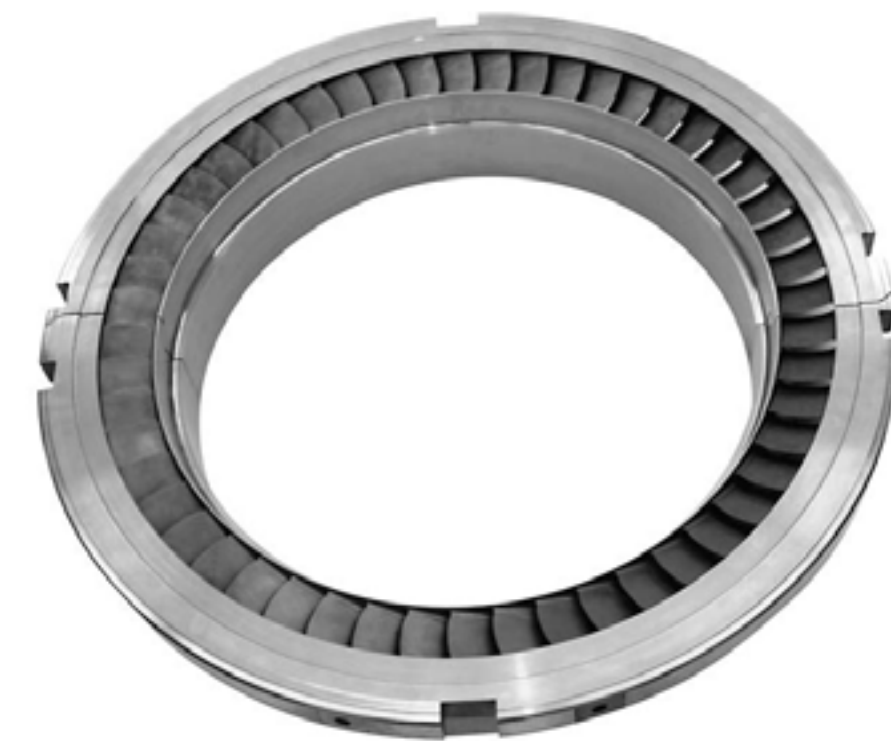
*SIZE IS ONLY LIMITED BY THE WEIGHT OF THE RAW MATERIAL (MAX: 11 TONNES)
AND A MAXIMUM DIAMETER OF 2500 MM.*



Shrouded impeller, milled from
solid material (Aluminium)



Stator ring, dia. 1900 mm, milled
from solid material



Stator ring, dia. ca. 1300 mm

IMPELLER/BLISKS

*SIZE IS ONLY LIMITED BY THE WEIGHT OF THE RAW MATERIAL (MAX: 11 TONNES)
AND A MAXIMUN DIAMETER OF 2500 MM.*



Turbine wheel for turbo-charger
dia. 45 mm (Inconell 718)





OUR PRODUCTS *TURBINE BLADES AND VANES*

75
YEARS

TURBINE BLADES AND VANES

*BLADES AND VANES FOR STATIONARY
AND AIRBORNE TURBINES*



TURBINE BLADES AND VANES

*SIZE IS ONLY LIMITED BY THE WEIGHT OF THE RAW MATERIAL (MAX: 11 TONNES)
AND A MAXIMUM DIAMETER OF 2500 MM.*



Gas turbine blades



Turbine blade (Nimonic)



Diffuser blade (X5CrNi134)



TURBINE BLADES AND VANES

*SIZE IS ONLY LIMITED BY THE WEIGHT OF THE RAW MATERIAL (MAX: 11 TONNES)
AND A MAXIMUM DIAMETER OF 2500 MM.*



Vane cluster (Titanium)



Vane ring for the aerospace industry (Titanium)



Vane and blade for steam turbine



TURBINE BLADES AND VANES

*SIZE IS ONLY LIMITED BY THE WEIGHT OF THE RAW MATERIAL (MAX: 11 TONNES)
AND A MAXIMUM DIAMETER OF 2500 MM.*



Vane, various stages
(Inconel 718)



Vane for gas compressor





OUR PRODUCTS *CASING FOR TURBINES*

75
YEARS

CASING FOR TURBINES

CASING FOR TURBINES



CASING FOR TURBINES

*SIZE IS ONLY LIMITED BY THE WEIGHT OF THE RAW MATERIAL (MAX: 11 TONNES)
AND A MAXIMUM DIAMETER OF 2500 MM.*



Engine casing OGV
(Inconel 718)



Engine casing HPT case (Inconel
718) dia. Approx 700 mm



Main casing biparted for gas
turbine (Inconel) dia. 1700 mm

OTHER PARTS

*THRUST NOZZLES, CYLINDER BLOCKS AND HEADS FOR
PROTOTYPES AND RACING MOTORS, STEERING KNUCKLES,
CONNECTION RODS.*



OTHER PARTS

*SIZE IS ONLY LIMITED BY THE WEIGHT OF THE RAW MATERIAL (MAX: 11 TONNES)
AND A MAXIMUM DIAMETER OF 2500 MM.*



Compound rotor milled
from solid material



Pelton wheel dia.
Approx. 1200 mm



Satellite tank (Titanium) wall thickness
0.8 mm tolerance + 0.05 mm



OTHER PARTS

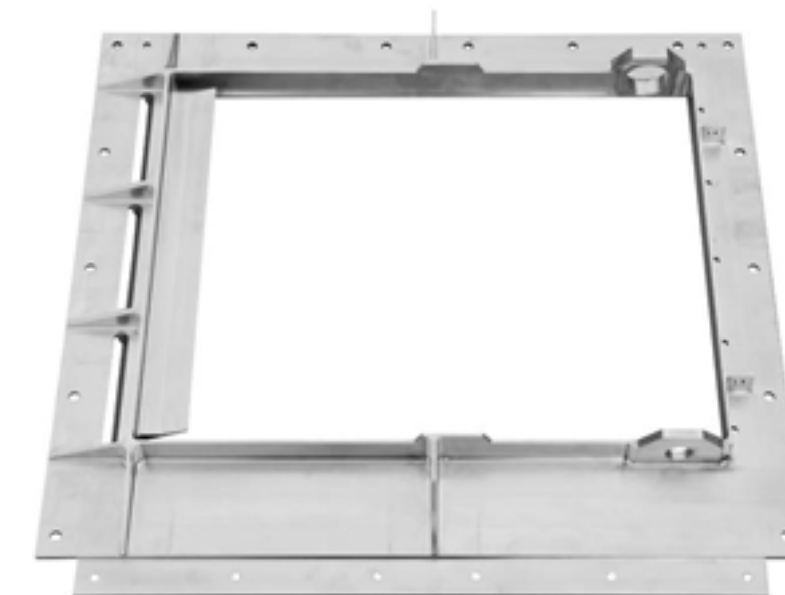
*SIZE IS ONLY LIMITED BY THE WEIGHT OF THE RAW MATERIAL (MAX: 11 TONNES)
AND A MAXIMUM DIAMETER OF 2500 MM.*



Cylinder head for a
racing car (DTM)



Attachment bracket for the Airbus
A380



Air inlet frame for Airbus





PRODUCTION MACHINING COMPLEX PARTS

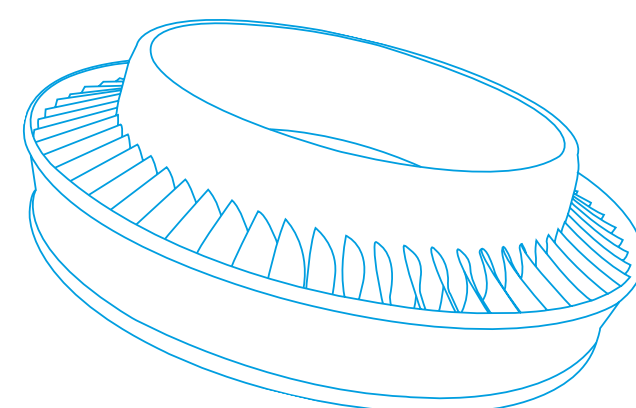
75
YEARS

**PRÄWEST IS A SYNONYM FOR
MEETING CHANGING REQUIREMENTS
AND HIGHER STANDARDS.**

PRODUCTION

»PRÄWEST-LIKE« IS THE SYNONYM FOR MEETING CHANGING REQUIREMENTS AND HIGHER STANDARDS, REALISED IN PARTNERSHIP WITH OUR MACHINERY MANUFACTURERS.

PRÄWEST is investing continuously in new technology in order to support our customers needs. The simultaneous five-axis-milling of complex parts for all industrial applications is one of the focal points of our production. We are able to mill parts up to a diameter of 2500 mm and weighing up to 15 tonnes in five axis. The PRÄWEST machine park covers more than 100 CNC machines in addition to some 24 robots:



46

FIVE-AXIS
NC MILLING
MACHINES

29

FIVE-AXIS
MILL-TURN
MACHINES

10

FOUR-AXIS
NC MILLING
MACHINES

08

THREE-AXIS
NC MILLING
MACHINES

20

HORIZONTAL
NC TURNING
MACHINES

20

ROBOTS

13

FIVE-AXIS NC
GRINDING
MACHINES

07

CONVENTIONAL
MILLING
MACHINES

02

CONVENTIONAL
TURNING
MACHINES

07

VERTICAL
NC TURNING
MACHINES

01

ADDITIVE
MANUFACTURING
MACHINES

08

VIBRO-
POLISHING
MACHINES

05

EDM MACHINES

18

ZEISS CNC
MEASURING
MACHINES

**PRÄWEST USES THE FOLLOWING SPECIAL
SOFTWARE FOR NC PROGRAMMING:**

CADRA (PC-APT)

CATIA V4, CATIA V5

*MAX5, MAX-SI, MAX-AB
(CONCEPTS NREC)*

TS35, TS85 (CB FERARRI)

QUALITY

OUR QUALITY ASSURANCE

OUR QUALITY DEPARTMENT IS SUPPORTED BY 18 ZEISS
CNC-COORDINATE MEASURING MACHINES.



ISO 14001



EN 9100 |
AS 9100C | JISQ 9100



ISO 9001



ISO 50001

PRAWEST

QUALITY OUR QUALITY ASSURANCE

75
YEARS





QUALITY OUR QUALITY ASSURANCE

75
YEARS

56



PRAWEST

QUALITY OUR QUALITY ASSURANCE

75
YEARS



MISSION STATEMENT

»By maintaining our focus on developing and implementing cutting edge manufacturing technology, supporting a highly flexible & skilled workforce and building long term partnerships with a customer base spread among a wide variety of industrial sectors, we aim to manufacture products of the highest quality on time at competitive prices.«



FEEL FREE TO GET IN TOUCH WITH US



Reiner Wahlers
Managing Director
reiner.wahlers@praewest.com



Dr. Benjamin O'Shea
Managing Director
benjamin.oshea@praewest.com



Karl-Heinz Hoyer
Member of Management
karl-heinz.hoyer@praewest.com

FEEL FREE TO GET IN TOUCH WITH US



Timo Cordes
Head of Quality Control /
Authorized Officer
timo_cordes@praewest.com



Armin Schmider
Head of Business Area
Aerospace / Authorized Officer
armin_schmider@praewest.com



Gaylord Klammt
Head of Business Area
Industry / Authorized Officer
gaylord_klammt@Praewest.com



FEEL FREE TO GET IN TOUCH WITH US



Lynn Wegener
Quality Management
Representative
lynn.wegener@praewest.com



Christian Hoppe
Tool Grinding and
Development Manager
christian.hoppe@praewest.com



Angela Cordes
Head of
Purchasing
angela.cordes@praewest.com

CONTACT US

PRÄWEST PRÄZISIONSWERKSTÄTTEN
Dr.-Ing. Heinz-Rudolf Jung GmbH & Co. KG
Martinsheide 7
28757 Bremen | Germany

Tel.: +49 421 / 658 51 – 0
Fax: +49 421 / 658 51 – 38

Mail: office@praewest.com

Die Gesellschaft ist eine Kommanditgesellschaft
mit Sitz in Bremen, Registergericht Bremen
HRA 19148 HB.

Persönlich haftende Gesellschafterin ist die
Präwest Geschäftsführungs-OHG mit Sitz in
Bremen, Registergericht HRA 22555 HB.
Ust-IdNr. DE114660126.

Geschäftsführung: Dipl. Ing. Reiner Wahlers & Dr. Benjamin O'Shea



**THANK YOU FOR
YOUR
ATTENTION!**

PRAWEST

© 2020 PRAWEST PRÄZISIONSWERKSTÄTTEN.
All rights reserved.