



Control, Monitor, and Report real-time system diagnostics - while increasing RMR.
Stay alert, resolve issues and control power from **anywhere over the network**.



BACKED BY A LIFETIME WARRANTY

NETWAY[®]

PoE Midspans/Injectors

- Support the latest high-powered IP security devices.

NETWAY[®] SPECTRUM

Hardened PoE Switches & Ethernet to Fiber Media Converters

- Deploy multiple IP devices at longer distances in remote locations, with or without local power.

LINQ2

Network Communication Module

- Enables remote power supply status monitoring and control
- Designed to interface with 2-eFlow power supply/chargers

LINQ8PD(CB)

Dual Input Network Managed Power Distribution Module

- Facilitates monitoring, reporting and control over 8-individual power outputs

LINQ8ACM(CB)

Dual Input Network Managed Access Power Controller

- Facilitates monitoring, reporting and control over 8-individual Fail-Safe/Fail-Secure power outputs
- Selectable fire alarm disconnect

Features:

- Output voltage is individually selectable for each of the 8-outputs
- Battery backup is selectable by output.
- Unique stackable design saves enclosure space.
- Available with fused or PTC protected outputs (add suffix 'CB')

Eliminate truck rolls and increase RMR:

- Provides local and/or remote access to critical linformation via LAN/WAN.
- Report system diagnostics via :LINQTM Dashboard and/or email alert notification
- Local and/or remotely control outputs and reset devices.
- Monitors current, voltage, internal temperature, batteries.
- Programmable voltage and current threshold.

Programmable time events:

- Control output and power supply via flexible timing parameters.
- Power cycle mode, Timer Scheduler, FACP override, Battery backup.
- Third-party-certified cybersecurity.
- Individual password protected user levels.
- Event log tracks history.
- Manage and maintain security devices over multiple sites via Altronix LINQTM DashBoard.



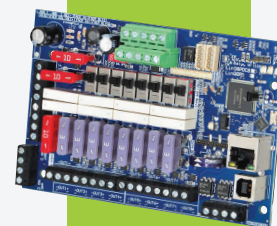
NETWAY8BT



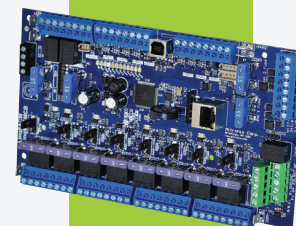
NETWAY4BTWP



LINQ2



LINQ8PD

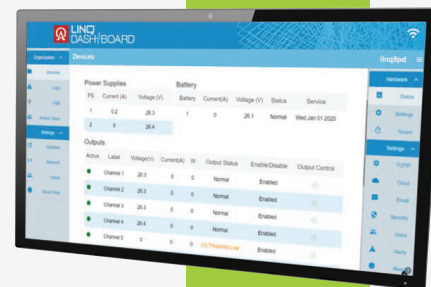


LINQ8ACM

LINQ-DASHBOARD (v12)

Remote Power Management for LINQTM Enabled Products

- Intuitive IP communication software solution to remotely monitor, report, and control any combination of individual or multiple groups of products across any number of locations and systems.
- Provides system diagnostics and/or email alert notifications.
- Monitors current, voltage, internal temperature, batteries, and more.
- Local and/or remotely control outputs and reset devices.
- Monitor virtually an unlimited number of devices.
- Auto detect devices pointed to the Dashboard.
- Save time by remotely uploading existing or recently deployed IP devices.
- Update the software of multiple devices at one time.
- On screen notifications when devices firmware is outdated.
- Single port used to access remote devices.
- User-level(s) and local email server by organization.
- Third-party-certified cyber security.
- Individual password protected user levels.
- List of active users.
- Event log tracks history.



LINQ DASHBOARD