



## 2023 FEATURED PRODUCTS

- + EXTEND ETHERNET RANGE
- + ACCESS & POWER INTEGRATION
- + NETWORK POWER MANAGEMENT
- + FIRE/EMERGENCY COMMUNICATIONS



## Increase the Range of your Security.

### **Pace1KRT** **Single Pair Adapter Kit**

- Deploy IP devices up to 1000m over a single pair (shielded/unshielded).
- Cost-effective solution for elevator shafts, tunnels, bridges, HVAC, and more..
- Includes Pace1KR Receiver and Pace1KT Transceiver.
- Powered by PoE/PoE+ midspan.



**Pace1KRT**

### **Pace1STR** **Long Range Ethernet Adapter Kit**

- Deploy IP devices up to 500m over structured cable.
- Includes Pace1PRM Receiver and Pace1ST Transceiver.
- Powered by PoE/PoE+ midspan.
- Multi-port Receivers available with 4, 8 or 16 ports.



**Pace1STR**

### **Pace16PRM** **16-Port Long Range Ethernet Receiver**

- Deploy multiple IP devices up to 500m over structured cable.
- Supports up to 16-Pace1ST transceivers for larger installs.
- Powered by PoE/PoE+ midspan.
- 1U rack mount enclosure



**Pace16PRM**

## Upgrade to IP Utilizing Existing Coax Infrastructure, Saving Labor and Increasing Range.

### **eBridge100STR** **EoC Adapter Kit**

- Deploy IP devices over coax up to 300m.
- Includes eBridge100RM Receiver and eBridge100ST Transceiver.
- Powered by PoE/PoE+ midspan.
- Multi-port Receivers available with 4, 8 or 16 ports.



### **eBridge1600PCRM** **16-port EoC Receiver**

- Deploy multiple IP devices over coax up to 300m.
- Supports up to 16-eBridge100ST transceivers for larger installs.
- Powered by PoE/PoE+ midspan.
- 1U rack mount enclosure.



EXTEND ETHERNET  
RANGE



## Deploy IP Devices at Remote Locations with or without Local Power.

### NETWAYS4BTWP

#### 4-Port Hardened Outdoor Managed 4PPoE Switches with Integral Power

- Supports IP devices such as IP cameras, illuminators, wireless access points, and more...
- 4-PoE ports rated up to 90W each, 240W total
- Dual SFP ports (fiber uplink)
- Embedded **LINQ™ Technology** allows for remote device reset, system monitoring, and reporting.
- 115/230VAC input
- Built-in battery charging (SLA/LiFePO4)
- NEMA 4/4X IP66-11 rated enclosure.

### NETWAYS4BTWPX

- NetWaySP4BTWP in larger NEMA 4/4X IP66-11 rated enclosure to accommodate batteries.

### NETWAYS4BTWPN

#### 4-Port Hardened Outdoor Managed 4PPoE Switch

- 4-PoE ports rated up to 90W each, 240W total
- Dual SFP ports (fiber uplink)
- Embedded **LINQ™ Technology** allows for remote device reset, system monitoring, and reporting.
- Requires 48-56VDC input
- NEMA 4/4X IP66-11 rated enclosure.

*Unmanaged versions available.*





## Deploy IP Devices at Remote Locations with or without Local Power.

### NETWAYSP8WP

#### 8-Port Hardened Outdoor Managed PoE+ Switches with Integral Power

- Supports IP devices such as IP cameras, illuminators, wireless access points, and more...
- 8-PoE ports rated up to 30W each (2-ports rated up to 60W), 120W total
- Dual SFP ports (fiber uplink)
- Embedded **LINQ™ Technology** allows for remote device reset, system monitoring, and reporting.
- 115/230VAC input
- Built-in battery charging (SLA/LiFePO4)
- NEMA 4/4X IP66-11 rated enclosure.

### NETWAYSP8WPX

- NetWaySP8WP in larger NEMA 4/4X IP66-11 rated enclosure to accommodate batteries.



### NETWAYSP8WPN

#### 8-Port Hardened Outdoor Managed PoE+ Switch

- 8-PoE ports rated up to 30W each (2-ports rated up to 60W), 120W total
- Dual SFP ports (fiber uplink)
- Embedded **LINQ™ Technology** allows for remote device reset, system monitoring, and reporting.
- Requires 48-56VDC input
- NEMA 4/4X IP66-11 rated enclosure.

*Unmanaged versions available.*



EXTEND ETHERNET  
RANGE



## Deploy IP Devices at Remote Locations with or without Local Power.

### NETWAYSP4X

#### 4-Port Ethernet to Fiber Media Converter with Integral Power

- Provides 240W max per output (480W total), supporting multiple PoE switches.
- Utilizes Hybrid cable or separate Fiber and Copper
- Four (4) SFP ports (fiber uplink).
- Built-in battery charger (*RE2 - optional rack mount battery enclosure*).
- 115VAC/230VAC input.
- 1U rack mount enclosure.



### NETWAYSP1A

#### Media Converter/Repeater

- 2-port adapter converts Ethernet to Fiber
- Requires PoE



### NETWAYSP2P

#### Hardened 3-Port PoE Switch/Media Converter

- Converts Fiber to 2-Ethernet ports rated at 30W each
- Requires 48-56VDC input



### NETWAYSP1BT

#### 802.3bt PoE Media Converter/Injector

- Converts Ethernet to Fiber and provides up to 90W
- Requires 48-56VDC input
- Available in NEMA 4/4X IP66-11 rated enclosure

NetWaySP1BT





## Flexible System Expansion Utilizing PoE.

### **NETWAY3012P**

#### **PoE Adapter/Converter**

- Provides PoE+ and 12VDC (2A) simultaneously.
- Applications including PoE cameras and external microphones, control boards, switching equipment and more...
- 30W max combined.
- Passes PoE/PoE+ from midspan/endspan.

**NetWay3024P** - Version provides PoE+ and 24VDC simultaneously.



**NetWay3012P**

### **NETWAY2ES**

#### **2-Port PoE Switch/Splitter**

- Deploy up to 2-IP cameras/devices over a single CAT5 or higher structured cable.
- 30W max power per output (60W total)

### **NETWAY2ESWPN**

#### **Outdoor 2-Port PoE Switch/Splitter**

- Outdoor version in compact NEMA 4/4X IP66-11 rated enclosure.



**NetWay2ESWPN**



## Power for 802.3bt Devices & Peripherals.

### NETWAY1BT

#### Single Port 4PPoE Midspan/Injector

- Provides up to 90W.
- 802.3bt compliant.
- 115VAC/230VAC input.



NetWay1BT

### NETWAY8BT

#### 8-Port Managed 4PPoE Midspan

- Provides up to 90W per port (480W max).
- Built-in battery charger.  
(RE2 - optional rack mount battery enclosure).
- 802.3bt compliant.
- 115VAC/230VAC input.
- Embedded **LINQ™ Technology** allows for remote device reset, system monitoring, and reporting.
- 1U rack mount enclosure.



NetWay8BT





## PoE Driven Power Solutions - Save Time & Labor.

### Tango1B

#### PoE Driven Access Control Power Supply/Charger

- Eliminates dedicated AC power circuit, saving time and labor using low-voltage installation and wiring methods.
- Input power 802.3bt (90W) (NetWay1BT, etc...).
- Simultaneously delivers 12VDC and 24VDC.
- Built-in LiFePO4 battery charger.
- Unique stackable design for multi-output power distribution.
- Saves valuable space.

### Tango8AP

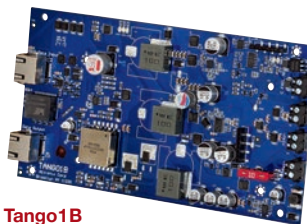
#### Multi-Output PoE Driven Access Power Controllers

- Input power 802.3bt (90W) (NetWay1BT, etc...).
- Simultaneously delivers 12VDC and 24VDC.
- 8-fuse protected trigger controlled lock outputs and 8-power outputs.
- Voltage is individually selectable by output.
- Bi-color LEDs indicate 12/24VDC is present.
- Built-in LiFePO4 battery charger.
- Powered by any 802.3bt compliant midspan.
- Includes Tango1B, ACMS8, and PDS8.

**Tango8APCB** - Version with PTC protected outputs



Scan here  
to view video



Tango1B



Tango8AP



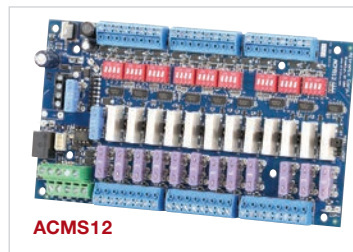
## Distribute Power for More Locking Devices & Readers, with Less Real Estate.

### ACMS12

#### Multi-port Access Power Controllers

- 12-fuse protected trigger controlled lock outputs.
- Dual power input allows for individually selectable 12VDC and 24VDC outputs.
- Bi-color LEDs indicates 12VDC or 24VDC is present.
- Fire alarm disconnect is selectable by output.
- Unique stackable design saves enclosure space.

ACMS12CB - PTC protected outputs



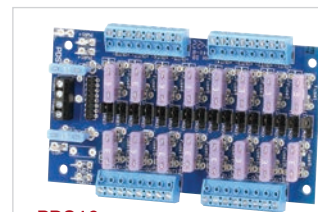
ACMS12

### PDS16

#### Multi-port Power Distribution

- 16-fuse protected power outputs.
- Dual power input allows for individually selectable 12VDC and 24VDC outputs.
- Bi-color LEDs indicates 12VDC or 24VDC is present.
- Unique stackable design saves enclosure space.

PDS16CB - PTC protected outputs



PDS16



## Control, Monitor, & Report Power – Increasing System Reliability & Your Bottom Line.

### LINQ8PD

#### Dual Input Network Managed Power Distribution

- Facilitates monitoring, reporting and control of one or 2-AC or supervised DC power supply/chargers.
- Eliminate truck rolls and increase RMR.
- Output voltage is individually selectable for each of the 8-outputs when utilizing 2-power supplies.
- Retrofits with most currently installed multi-output power supply/chargers.
- Battery backup is selectable by output.
- Unique stackable design saves enclosure space.

#### Network Management Features:

- Provides local and/or remote access to critical information via LAN/WAN.
- Report system diagnostics via dashboard and/or email alert notification
- Local and/or remotely control outputs and reset devices.
- Monitors current, voltage, internal temperature, batteries.
- Programmable voltage and current threshold.
- Programmable time events:
  - Control outputs and power supply via flexible timing parameters.
- Power cycle mode, Timer Scheduler, FACP override, Battery backup
- Third party certified cybersecurity.
- Individual password protected user levels.
- Event log tracks history.
- Manage and maintain security devices over multiple sites via **Altronix LINQ™ DashBoard**.

**LINQ8PDCB** - PTC protected outputs



NETWORK POWER  
MANAGEMENT



## Control, Monitor, & Report Power – Increasing System Reliability & Your Bottom Line.

### LINQ8ACM

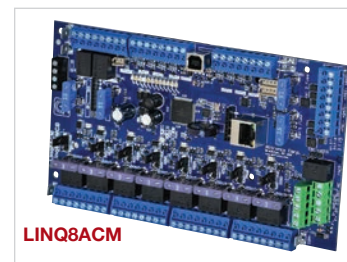
#### Dual Input Network Managed Access Power Controllers

- 8-programmable Access Control System trigger inputs.
- 8-selectable 12VDC or 24VDC independently controlled fused outputs.
- 8-auxiliary power outputs (unswitched).
- Fire Alarm disconnect (latching or non-latching) is individually selectable for any or all of the 8-outputs.
- Eliminate truck rolls and increase RMR.
- Retrofits with most currently installed multi-output power supply/chargers.
- Unique stackable design saves enclosure space.

#### Network Management Features:

- Provides local and/or remote access to critical information via LAN/WAN.
- Report system diagnostics via dashboard and/or email alert notification
- Local and/or remotely control outputs and reset devices.
- Monitors current, voltage, internal temperature, batteries.
- Programmable voltage and current threshold.
- Programmable time events: Control outputs and power supply via flexible timing parameters.
- Power cycle mode, Timer Scheduler, FACP override, Battery backup.
- Third party certified cybersecurity.
- Individual password protected user levels.
- Event log tracks history.
- Manage and maintain security devices over multiple sites via **Altronix LINQ™ DashBoard**.

**LINQ8ACMCB** - PTC protected outputs



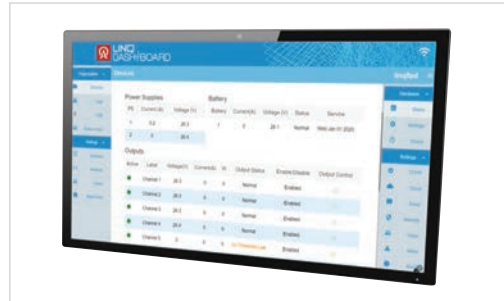
LINQ8ACM

## Manage and Maintain Security Devices over Multiple Sites.

### LINQ-Dashboard (Latest Version - v12)

#### Remote Power Management for LINQ™ Enabled Products

- Intuitive IP communication software solution to remotely monitor, report, and control any combination of individual or multiple groups of products across any number of locations and systems.
- Provides system diagnostics and/or email alert notifications.
- Monitors current, voltage, internal temperature, batteries, and more.
- Local and/or remotely control outputs and reset devices.
- Monitor virtually an unlimited number of devices.
- Auto detect devices pointed to the Dashboard.
  - Save time by remotely uploading existing or recently deployed IP devices.
- Update the software of multiple devices at one time.
- On screen notifications when devices firmware is outdated.
- Single port used to access remote devices.
- User level(s) and local email server by organization.
- Third party certified cybersecurity.
- Individual password protected user levels.
- List of active users.
- Event log tracks history.







## Access and Power Integration Designed for Smaller Installations and Retrofit Applications.

### TM250

#### Compact Access & Power Solution

- Supports a single Altronix power supply/charger and Mercury boards for access systems or up to two (2) EP1501 or MR51e (without power).
- Ideal for above door, retrofit installations.
- Accommodates a single 12VDC/4AH battery.



TM250

### TM400

#### Customizable Access & Power Solution

- Supports a single Altronix power supply/charger with Altronix sub-assemblies and various Mercury boards.
- Accommodates the following options:
  - 1- Up to three (3) MR50 with one (1) Altronix power supply/charger.
  - 2- One (1) EP1501 or MR51e and one (1) EP4502, EP1502, MR52, MR16IN or MR16OUT with one (1) Altronix power supply/charger.
  - 3- One (1) EP4502, EP1502, MR52, MR16IN or MR16OUT with one (1) Altronix power supply/charger, up to two (2) Altronix sub-assemblies.
- Accommodates up to two (2) 12VDC/7AH batteries.



TM400

*Boards sold separately.*



## Easily Combine Altronix Power with Controllers from the Leading Access Brands.

### Trove Wall Mount Series

#### Pre-wired Access & Power Kits

- Simplifies board layout and wire management, adding consistency to your installations.
- Altronix power and sub-assemblies pre-configured with custom wire assemblies for ease of deployment.
- High-density slotted adhesive backed duct with covers, facilitates routing and managing of wires for a complete, professional installation.
- Removable backplanes allow you to configure and test prior to on-site installation, reducing installation time and costs.



Trove Supports the Following Brands:





## Support up to 8-Doors with Power from a Single Rack Drawer.

### Trove Rack Mount Series

#### Customized or Pre-configured Access & Power Kits

- Simplifies board layout and wire management, where wall space is limited.
- Accommodates Altronix power distribution with access controllers from the leading brands, or isolate power and controllers in separate rack enclosures.
- Removable backplanes allow you to configure and test prior to on-site installation, reducing installation time and costs.
- Unique 2U rack drawer allows for simple service and maintenance, includes Z-Bracket to facilitate wiring, tamper switch, and cam lock.

**T1RSH3F8**



### Trove1SH1R

#### Access & Power Rack

Supports up to 8-doors with power for Software House controllers



### Trove2M2R

#### Access & Power Rack

Supports up to 8-doors with power for Mercury platform controllers



**T2RM7F8S**

Access Controller Boards sold separately.



## High-Capacity Access and Power Integration Solutions.

### TROVE3MBK3

#### Maximum Density Access & Power

- Supports up to 24-doors with power or 36-doors without power.
- Each set of brackets accommodate Altronix power, Altronix sub-assemblies and Mercury boards.
- Includes: Trove3 enclosure, TM3B backplane with 36-BR3M angled brackets, along with mounting hardware and accessories.

BR3M2PK - set of brackets

### T3MB777K1

#### Pre-wired 24-Door Access & Power Kit

- Includes factory installed power and sub-assemblies (fused), wire management, and wire assemblies for Mercury controllers.

T3MB777K1D - PTC protected outputs

Power Supply/Chargers



Sub-assemblies



Mercury Boards



**TROVE3MBK3**

*Boards sold separately.*



# TROVE™

## Matching Wire Trough & Battery Storage.

### TROVE3BWC

#### Battery/Wire Trough (Horizontal Mount)

- Accommodates up to four (4) 12VDC/18AH batteries.
- Designed to mount above or below Trove3 enclosure.

### TROVE2BWC

#### Battery/Wire Trough (Horizontal Mount)

- Accommodates up to four (4) 12VDC/18AH batteries.
- Designed to mount above or below Trove2 enclosure.

### TROVE3SWC

#### Battery/Wire Trough (Vertical Mount)

- Accommodates up to four (4) 12VDC/40AH batteries (shelves included).
- Designed to mount on the side of Trove3 enclosure.

*Above models include cam lock and tamper switches.*



TROVE3SWC



TROVE3BWC

## Providing System Designers Optimum Power Choices, with More Versatility.

### MaxFit3E

#### Single Voltage Power Options

- 12VDC or 24VDC at 6A max.

#### *Models available with:*

- 12VDC and/or 24VDC outputs, providing up to 20A.
- Accommodates Altronix power supply/chargers and Altronix sub-assemblies.
- Network power management options.

### MaxFit33E

#### Dual Voltage Power Options

- 12/24VDC at 6A max plus 12/24VDC at 6A max.



**MAXFIT33E**

Customize your power distribution with Altronix sub-assemblies.





## Power for Emergency Responder Communication Enhancement Systems.

### COMMBATT1

#### Bi-directional Amplifier Power & Backup

- Typically utilized in ARCS and ERCES systems.
- Charges and accommodates up to two (2) 55AH batteries in series for 24V, One (1) or two (2) in parallel for 12V.
- Provides 12VDC @ 12A or 24VDC @ 6A regulated output.
- 115VAC-220VAC 50/60Hz input.
- Multiple independent supervisory outputs.
- Supervision:
  - AC: Failure/Brownout.
  - Battery: Low Battery/Battery Presence/Battery fail.
  - Trouble: Power Supply/Battery Charger/Low Battery Shutdown/Microcontroller Failure.
- Visual Indicators:
  - AC High and Low Side
  - Heartbeat
  - Battery
  - Charger
  - Ground Fault

#### Agency Listings:

- UL2524: Standard for In-building 2-Way Emergency Radio Communication Enhancement Systems
- UL864: Standard for Control Units and Accessories for Fire Alarm Systems.
- CAN/ULC-S527 Fourth Edition, 2019 Control Units for Fire Alarm Systems.



COMMBATT1



## Provide Remote Indications of BBU & BDAS Status.

### ANC1BBU

#### Remote Annunciator for COMMBATT1

- Allows local and remote annunciation of various trouble conditions of BDA (Bi-Directional Amplifier) and BBU (Battery Back-Up Unit).
- Reports conditions to the FACP through separate set of dry contacts, with visual and audible indicators.
- Nine (9) 10K EOL supervised inputs to connect to power supply and other equipment that require annunciation of trouble conditions.
- Ten (10) NC output contacts to connect to FACP with convenient end of line resistor wiring terminals.
- Separate relay NC output for reporting common trouble to FACP.
- Two (2) spare outputs for additional equipment monitoring.
- 12-24VDC input.
- Bicolor visual indicators of trouble conditions:
  - AC Fail, Low Battery, Charger Fail, Component Fail, Ground Fault
  - BDA Fail and Antenna Fail

#### Agency Listings:

- UL2524: Standard for In-building 2-Way Emergency Radio Communication Enhancement Systems
- UL864: Standard for Control Units and Accessories for Fire Alarm Systems.
- CAN/ULC-S527 Fourth Edition, 2019 Control Units for Fire Alarm Systems.





## NAC Power and Notification with all the Bells and Whistles.

### **FIRESWITCH108**

#### **Network Programmable NAC Power Extender**

- 24VDC regulated power-limited NAC outputs at 10A max.
- 2.5A max. current per output.
- One (1) dedicated aux. output with battery backup rated at 1A.
- Two (2) configurable inputs trigger via Class A or Class B signal circuits (polarity reversal) or dry contacts.
- Power outputs are programmable as:
  - 8 Class B NAC outputs
  - 4 Class A NAC outputs
  - Aux. power outputs (with or without battery backup)
  - Any combination of the above
- EOL resistor values are programmable by output, saving time and labor costs.
- Sync protocols include Potter/Amseco, Gentex®, System Sensor®, and CooperWheelock®.
- Ethernet port and LCD display facilitate local programming and remote status monitoring.
- Temporal Code 3, Steady Mode, Input to Output Follower Mode.
- Temporal Code 4 for system CO alarms.
- Signal circuit trouble memory - quickly locates intermittent system trouble and eliminates costly and unnecessary service calls.
- Synchronize up to twelve (12) FireSwitch108 units.
- Compatible with 12VDC or 24VDC fire panels.
- Input to output follower mode.
- Embedded **LINQ™ Technology** allows for remote device reset, system monitoring, and reporting.



**FireSwitch108**



## Fire Power, when Wall Space is not an Option...

### **R1002ULADA**

#### **Rack Mount NAC Power Extenders**

- Programmable Supervised Indicating Circuit Outputs:  
Four (4) Class B, or two (2) Class A, or  
One (1) Class A and Two (2) Class B.

**AL1002ULADA** - Wall Mount Version

### **R1042ULADA**

#### **Rack Mount NAC Power Extenders**

- Programmable Supervised Indicating Circuit Outputs:  
Four (4) Class B, or Four (4) Class A, or  
Two (2) Class A and Two (2) Class B.

**AL1042ULADA** - Wall Mount Version

#### **Features:**

- Provides 24VDC at 10A (2.5A per output).
- Sync protocols include Potter/Amseco, Gentex®, System Sensor®, and CooperWheellock®.
- Two (2) Aux outputs rated at 1A each.
- Two (2) Class A or two (2) Class B inputs.
- Two (2) NC dry contact trigger inputs.
- Temporal Code 3, Steady Mode, Input to Output Follower Mode.
- Built-in battery charging  
(*RE2R - rack mount battery enclosure, houses four 12VDC/7AH batteries*).
- Ground fault detection.



**R1042ULADA**



**RE2R**



## Facilitates Local & Remote Programming over the Network.

### TEMPO724Q

#### Network Programmable 24/7 Timer

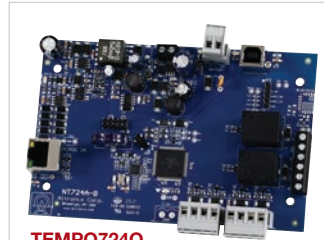
- Input 12VDC/24VDC operation or PoE.
- Built-in battery charging (SLA).
- Flash memory protects against loss of programming due to power failure.
- Momentary and/or Latching Events.
- 60 individually programmed daily/weekly events.
- Block programming capacity can accommodate a total of:
  - 420 events per week
  - 30 programmable Holiday dates
  - Automatic compensation for leap year

#### Embedded LINQ™ Network Management Technology

- Remote programming
- Programmable users
- USB Network programming
- Email and dashboard alerts

#### *Alerts include:*

- System Start up
- "First man in" option
- Standard or Daylight Savings Time settings
- Two independent relays
- Two independent relays trigger inputs (Programmed, relay does not change state)\*
- LED indicators: PoE input, AUX power input, Battery LED, and Heartbeat (flashing)



TEMPO724Q

NETWORK  
TIMER



## Monitor Activity in any Area... Provide Situational Awareness, while Reducing Risk.

### OA2

#### Occupancy Alert System

- Continuously monitor normal traffic patterns to provide notifications of unauthorized activity.
- Ideal for single use restrooms/spaces commonly found in retail, hotels, dining, medical facilities, universities, transportation, parks/recreational facilities, etc...
- Activate via deadbolt latch monitor, motion sensor, contacts, and more...
- Provides visual and/or audible, or remote alerts
- Trigger options:
  - Two (2) Door Sensor/Trigger inputs.
  - Two (2) Strobe "Steady" Trigger Inputs.
  - Two (2) Strobe "Flash" Trigger Inputs.
  - Two (2) "Panic/Emergency" Trigger Inputs.
- Output options:
  - 12VDC/2.5A, 24VDC/1.25A, (30W).
  - Two (2) Strobe Switched Power Outputs.
  - Four (4) Aux. Power Outputs.
- 24VAC input
- Built-in battery charging
- LCD display simplifies programming.
- Momentary and/or latching events.
- Visual LED Indicators for AC Power, DC Output and active Trigger.
- Embedded **LINQ™ Technology** option, allows for remote device reset, system monitoring, and reporting.

**OA2X** includes transformer and line cord, 115VAC input

