



ASIS technologies

www.asis-technologies.com

EMPOWERING ENTERPRISE SECURITY

totallyintegratedIPsecurity

OUR VISION

"Our vision at ASIS Technologies is to be the leading provider of fully integrated IP security solutions, empowering our clients to protect their assets and people through innovative technology and unparalleled service.

We aim to achieve this by continuously improving our product quality and service offerings, delivering total customer satisfaction and creating a culture of excellence that inspires our employees to be the best in the industry."



OUR JOURNEY

With over 25 years of expertise in designing and manufacturing integrated security solutions, we have established ourselves as a trusted and proven leader in the global market.

ASIS Technologies is a pioneer in the electronics security industry and played an integral role in the setting up of industry standards such as PS21 in Singapore. As a trusted designer and manufacturer of security systems solutions, ASIS Technologies is committed to innovation and technology.

Our journey began in 1996 as an OEM factory for the Philips Projects Division in Singapore. This collaboration brought with it significant projects such as the KK Women's and Children's Hospital, Singapore International Convention and Exhibition Centre, Petrochemical Corporation of Singapore, Police Cantonment Complex (HQ), the Ministry of Foreign Affairs, the Prime Minister's Office, and the Government of Singapore Investment Corporation.

Today, our security solutions are found in thousands of installations around the globe and across industries encompassing airports, banks, commercial buildings, prisons, hospitals, infrastructure, residential estates and government installations.

Ours is a journey of perseverance, innovation and growth. We continue to focus on customer satisfaction and continuous product innovations and improvements. Our team will continue to push the limits of technology and is dedicated to ensuring that all our customers around the world are safe and well.

ABOUT US

EMPOWERING ENTERPRISE SECURITY

Focus Industry - Integrated Security Solution

Target Market Segment - Medium to Large Enterprise

Our company is committed to empowering medium to large enterprises with comprehensive **integrated security solutions**. We specialize in delivering cutting-edge security systems tailored to the unique needs of businesses across various industries.

By leveraging advanced technologies and industry best practices, we provide a wide range of services including access control, video surveillance, and intrusion detection. Our team of experts works closely with clients to develop customized solutions that effectively address their security challenges.

With our unwavering commitment to excellence and customer satisfaction, we aim to be the trusted partner for enterprises seeking robust security solutions.



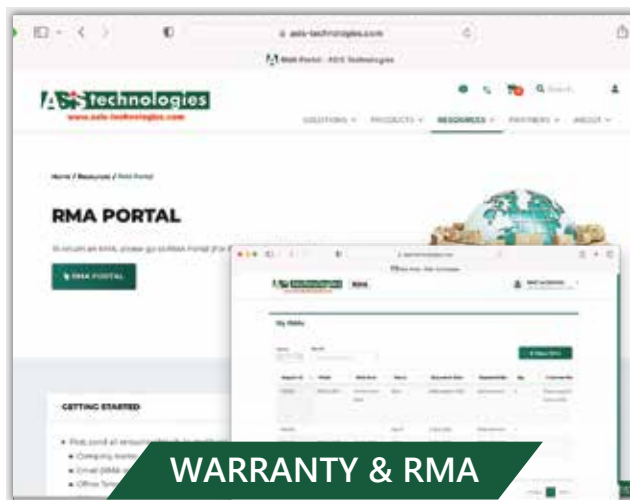
KEY CUSTOMERS



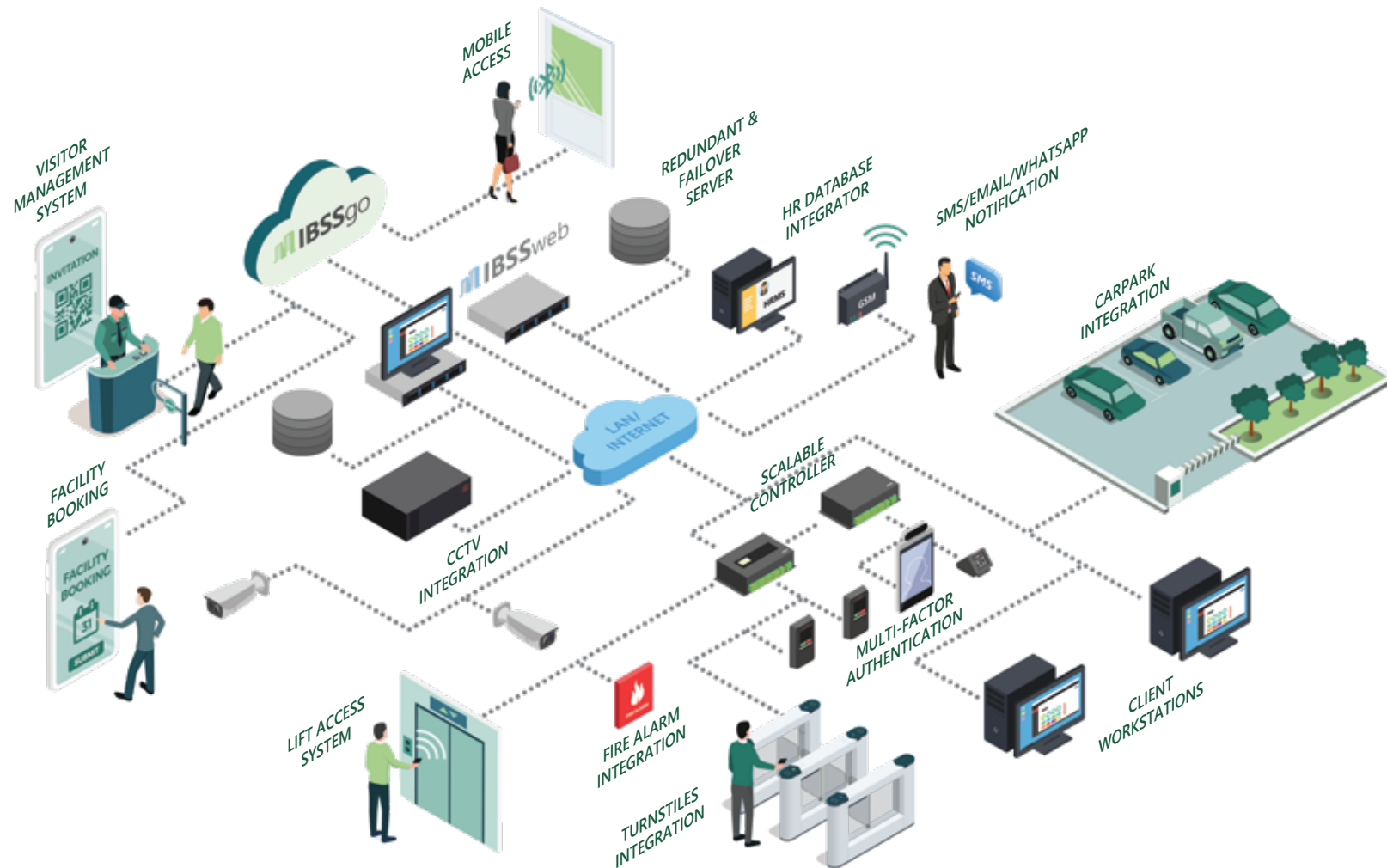
CE & FCC CERTIFICATION



CONNECTING WITH CUSTOMERS



ENTERPRISE SECURITY SOLUTION



THE FUTURE OF SECURITY SOLUTIONS



Scalable Excellence:

IBSSweb, a browser-based security software, scales from access control to a full security suite. Grow and adapt as needed.

Decades of Expertise:

With 20+ years in the field, IBSSweb is a robust, legacy-backed enterprise software.

Effortless Integration:

Seamlessly combine access control, intrusion detection, and CCTV with IBSSweb for efficient command and enhanced security.

Tailored Enhancements:

Elevate security with modules like Active Directory Service, biometric enrolment, visitor management and more. Connect effortlessly to third-party systems.

Evolve with Confidence:

IBSSweb adapts to your changing needs, ensuring ongoing protection and operational efficiency. Embrace the future of security with confidence.

IBSSweb: Elevate your security with an adaptable, integrated system.



KEY FEATURES

- HTML5 Compliant Web Client
- Built-in Card Designer
- Security Area for Enterprise DB Partitioning
- Highly Scalable and Secured MS SQL Server Database
- Configurable Roles and Permissions
- Integrated Biometric Enrolment

ADAPTABLE, EXTENSIBLE AND SECURE OPTIONAL MODULES FOR MEETING DIVERSE SECURITY CHALLENGES

**HR Database Integrator**

Seamlessly synchronize employee data

**CCTV Integration**

Intelligent video search and playback
Video popup for alarm event

**Web API**

Interface to 3rd party applications

**Time Clocking Report**

Provides employee attendance data

**Secret Key Management**

Eliminates card cloning and hacking

**Server Failover Service**

Prevents Single Point of Failure (SPOF)

**Messaging Gateway**

Real-time notification for events

**Advanced Audit Report**

Audit trails of events useful for investigation

**Active Directory Service**

Single sign-on user authentication

**Roll Call Report**

Tally presence/absence in emergency situations

**Elevator Despatch**

High level interfacing with 3rd party lift system

WebENTRA IP ACCESS CONTROLLER

WebENTRA
PROFESSIONAL Series

WebENTRA
COMPACT Series

Versatile Access Control:

2/4/8-Door IP access controller featuring Gigabit Ethernet.

Intuitive User Interface:

Web browser interface with floor plans, event reporting and real-time status display.

Robust Capacity:

Capable of handling up to 150,000 card IDs and storing 1 million events.

Enhanced Reliability:

Failover architecture to prevent Single Points of Failure (SPOFs).

Efficient Connectivity:

Equipped with dual Gigabit Ethernet ports for optimal connectivity.

Reader Compatibility:

Supports a range of readers, including Wiegand and RS485 (ADNET, OSDP, CLEX).

Scalable Expansion:

Modular design enables expansion for readers, inputs, and relay outputs.

Comprehensive Software Integration:

Seamlessly integrates with IBSSweb Enterprise Security Management Software.



P900 Professional Series



C300 Compact Series

WebENTRA SECURE ENCRYPTION (SE) READERS

WebENTRA

READER Series

Smartcard Versatility:

Support for NFC, ISO14443A/B and FeliCa smartcards.

Advanced Encryption:

Utilize 3DES, AES128 and CMAC encryption to prevent card cloning.

Secure Key Storage:

Store secret keys on-device or in Secure Access Modules (SAM).

Mobile Access:

Seamlessly integrate NFC and/or Bluetooth for mobile access control.

PIN Entry Flexibility:

PIN entry options include Touch sensing, silicon or scrambled keys.

Easy Installation:

Flexible mounting choices for mullion or wall switch installation.



R300 SE Series



R500 Mobile SE Series

BIOMETRIC RECOGNITION & INTEGRATED ENROLMENT

Fingerprint Technology:

Considered the most matured, offering an excellent price-to-performance ratio. Its wide availability and affordable hardware make it a favorable choice.

IRIS Recognition:

These methods offer exceptional accuracy due to the extraction of a large number of minutiae.

Face Recognition Advancements:

Recent progress in face recognition technology has made it a favorite among consumers. It's known for its convenience, non-intrusive operation, and significantly improved accuracy.

Integrated Biometric Enrolment:

Many biometric products are standalone, raising security concerns and enabling unauthorized enrolment. An integrated system ensures cardholder validation before biometric data enrolment, ensuring heightened security.



Fingerprint

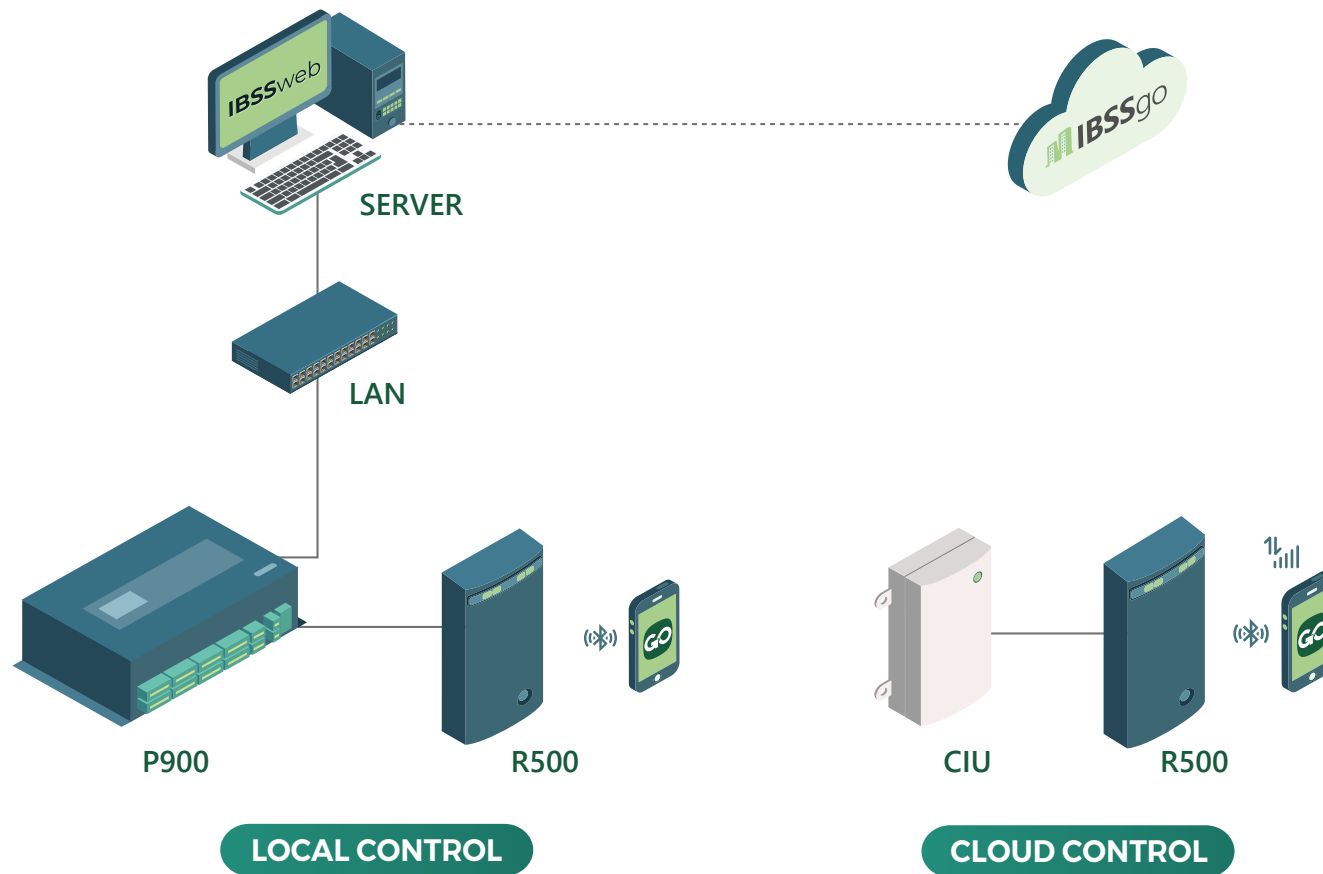


Iris



Face

MOBILE ACCESS CONTROL FOR THE ENTERPRISE



GoENTRA MOBILE APP

Mobile ID

Mobile user registration, mobile wallet and mobile access control

Event View

View own access transaction activities with detail date/time, device ID and access status

Notification

Message Broadcast and Incident Report workflow, photo/video upload, share/like/comment

Credential Management

Physical credential access right and validity, PIN change

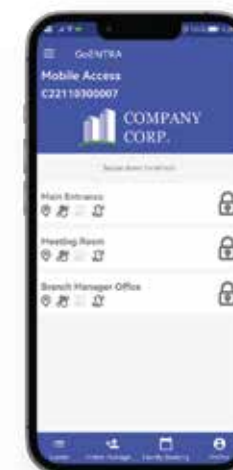
Facility Booking

Facility booking workflow for access to facilities via mobile app

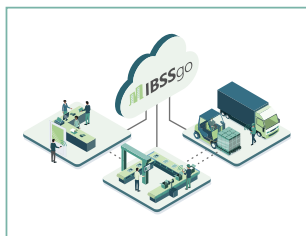
Visitor Management

Process workflow, issue QR code to visitor for access, notification upon visitor arrival

GOENTRA



IBSSgo CLOUD-BASED MOBILE ACCESS MANAGEMENT



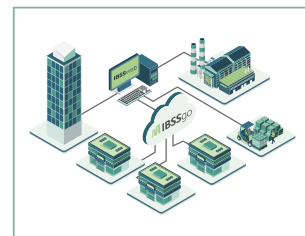
Small and Medium Business
Hassle free access control setup without LAN or local server.



Remote Infrastructure
Quick access control point at any remote location without internet.



Multi-tenanted Office Tower
Effortlessly Manageable, Efficiently Scalable, and Indisputably Powerful



Corporate Group
Increased compliance and seamless security management take the hassle out of the hybrid work setup.



Condominiums
Minimize security vulnerability with a single -sign in visitor management app and handle facility booking within one secure app.



Holiday Rental Home
Owners can securely assign and withdraw access rights for each property without being physically present.

SKeyMa ENCRYPTION ADVANTAGE COUNTERING THREATS OF CLONING

SKeyMa Protection Against RFID Fraud:

Ensure top-notch security against cloning and hacking with SKeyMa (Secret Key Management) encryption system.

Advanced AES128 & 3DES Encryption:

Our system is fortified with cutting-edge AES128 & 3DES encryption, providing end-to-end secure encryption.

Reduced Vulnerability to Cloning:

In the face of evolving card cloning technologies, relying solely on UID for smartcard identification can be risky.

Combat Insider Fraud:

Insider fraud accounts for a significant percentage of corporate fraud (55% to 75%). Our system mitigates this threat.

Guaranteed Card Uniqueness:

Our contactless access control readers decrypt encrypted card data, ensuring uniqueness and uncompromised security.

Professional Secret Key Management:

Storing encrypted data is vital, but safeguarding encryption keys is paramount. Enter SKeyMa, a dedicated Secret Key Management System.



VIDEO SURVEILLANCE SYSTEM



FlexCam Eco Series IP Cameras

- 2MP, H.265+, Fixed Focal, DWDR, Dual Streams

FlexCam Plus Series IP Cameras

- 2MP or 4MP, H.265+, Fixed/Vari/Motorized Focal, 120dB DWDR, Three streams
- Basic analytics (line/region intrusion/video exception)

FlexCam Max Series IP Cameras

- 2MP or 4MP, H.265+, Fixed/Vari/ Motorized, 120dB True WDR, Three streams
- Advanced analytics (Line crossing, Region intrusion/entering/exiting, video exception, abandoned/missing object; Face detection, counting by line/area, heat map, Video metadata)



FlexCam NVR System

- 64 or 128 channels, 8 or 16 HDD support
- RAID 0, 1, 5, 6 & 10 support
- Support (12MP/8MP/5MP/4MP/3MP/1080P/960P/720P/WD1@25/30fps)
- RJ45 1000 Mbps × 2
- 2 or 4 x HDMI output
- Also available in 1 or 2 HDD Bay 16 or 32 channel entry level range
- Fully integrated to IBSSweb



Geutebrück Enterprise Video Management Solution



FEATURED APPLICATION - HIGH SECURITY PRISON



FEATURED APPLICATION - SEMICONDUCTOR PLANT



GLOBAL OUTREACH



TURKIYE



VIETNAM



UNITED ARAB EMIRATES



GERMANY



UNITED KINGDOM



SINGAPORE

PROJECT REFERENCES



COMFORTDELGRO
(SINGAPORE)



DNATA CARGO
(SINGAPORE)



SINGAPORE LAND TOWER
(SINGAPORE)



JURONG PORT
(SINGAPORE)



STMICROELECTRONICS
(SINGAPORE)



SUNTEC CITY
(SINGAPORE)



UMC
(SINGAPORE)



CATHAY PACIFIC
(HONG KONG)



KL CONVENTION CENTRE
(MALAYSIA)



MENARA MAYBANK
(MALAYSIA)



CENTRAL BANK OF OMAN
(OMAN)



THE WORLD BANK
(PHILIPPINES)



PALM JUMEIRAH
(UAE)



SHARJAH CENTRAL PRISON
(UAE)



GIC
(UK)

**ASIS Technologies Pte Ltd
(Head Office)**

71 Ubi Crescent
#08-05 Excalibur Centre
Singapore 408571
Tel: +65 6 844 2141

sales_sg@asis-technologies.com

**ASIS Technologies (M) Sdn Bhd
(Malaysia Office)**

Suite 31.08 Office Tower
Johor Bahru City Square
106-108 Jalan Wong Ah Fook
80000 Johor Bahru, Malaysia
Tel: +60 7 221 0989

sales_my@asis-technologies.com

**ASIS Technologies Pte Ltd
(Turkey Representative Office)**

Batı Mh. 23 Nisan Cd.
Beydemir İş Hanı No: 12
3.Kat Ofis No: 310
Pendik 34890 İstanbul, Türkiye
Tel: +90 507 338 5477

sales_tk@asis-technologies.com

**ASIS Technologies Pte Ltd
(Vietnam Representative Office)**

144 - 146 Nguyễn Thái Bình
Level 7, District 1, Hồ Chí Minh
City, Vietnam
Tel: +84 776789160

sales_vn@asis-technologies.com