

DOUBLE POLE EMERGENCY BREAK GLASS



Product Parameter	Parameter Description
Dimensions	86Lx86Wx50H(mm)
Standard Structure	Fireproof Material, Easy to install
Contact Rating	3A@36VDC Max
Output Contact	NO/NC/COM
Mechanical Life	500000 tested
Door Type Applicable	Exit Door, Emergency Door
Weight	0.2kg

* Weight and Size are Only Approximation and May be Modified Without Prior Notification.



DCB036-Series

The DCB036-Series recessed mount magnetic contacts are designed for use in installations where a small, sealed unit is required. The reed switch is totally encapsulated in an exclusive polyurethane potting compound preventing moisture from entering the switch and causing false alarms.



Specifications

Contact Type: Closed Loop

Contact Rating : Breakdown Voltage 100v / Max.Switch Current 0.5A

Opera. Gap: 20-30mm

Housing: White ,Brown ,Grey ABS

CE,FCC,ROHS recessed mounted switch, ABS case, white or brown color

Loop type	Reed Form	Operation gap(mm)	Max Cur./Vol./Power/Init.Ress(A/VDC/W/m Ω)
Closed	Form A	20-30	0.5A/100V/10W/200m Ω
Open	Form B	20-30	0.2A/30V/3W/200m Ω
COM	NC& NO	20-30	0.2A/30V/3W/200m Ω

* Weight and Size are Only Approximation and May be Modified Without Prior Notification.

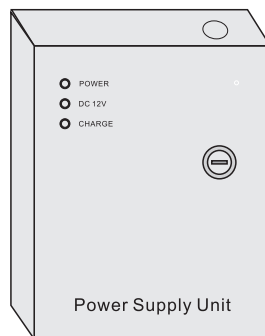


Note: Please carefully read User Manual before usage

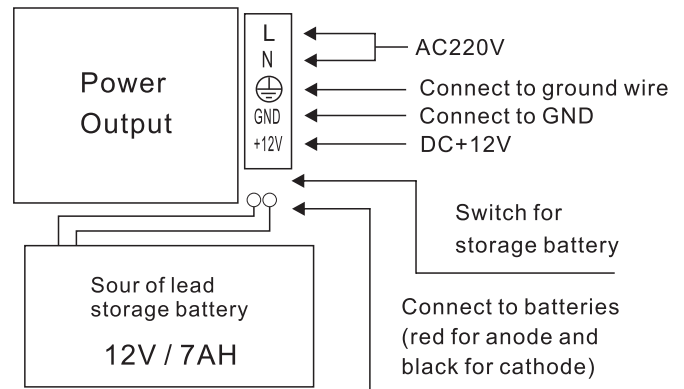
For detailed specification and functions, please refer to User Manual; in case of inconsistency, the content in User Manual should be kept.

All data and info in the catalog are carefully checked, any mistake resulted from printing and translation can be disregarded. Vians reserves the authority of explanation for its products.

Power Supply



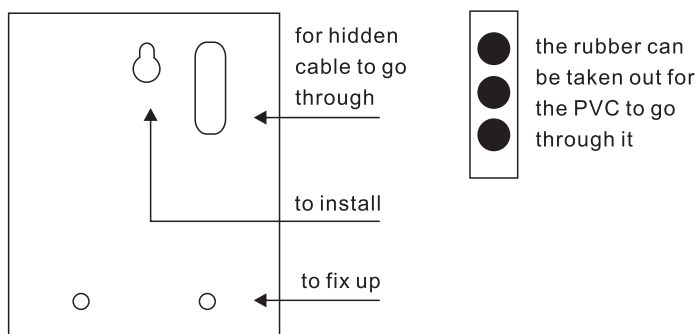
2. Connection



CE FC RoHS MA

1. Assembly

Bottom



3. Specification

- ◇ Input : AC190-265V 50-60Hz
- ◇ Output : DC12V±15%
- ◇ Output current: Max 3A
- ◇ Storage battery: 12V/7AH

4. Function of protect

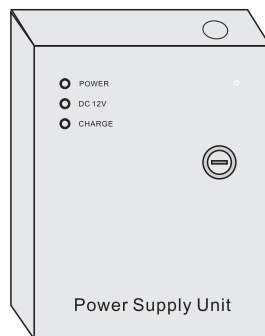
- ◇ Output Short protection
- ◇ Output Overcurrent protection
- ◇ Output Overvoltage protection

If the load happen to short-circuit, the power supply would not be output, and it will continue to work automatically when the short-circuit is settled.

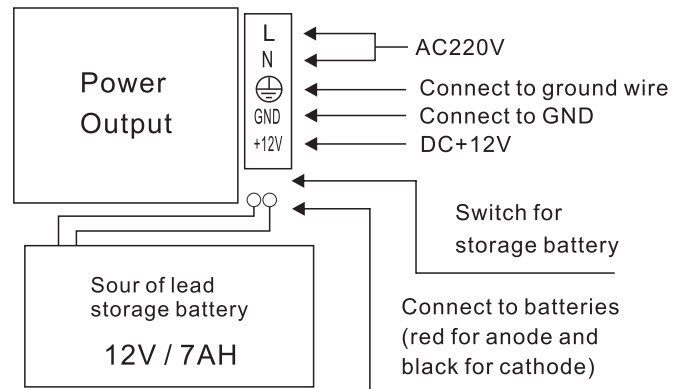
* Weight and Size are Only Approximation and May be Modified Without Prior Notification.



Power Supply



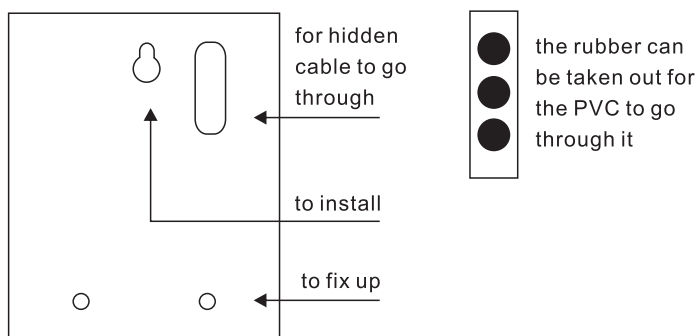
2. Connection



CE FC RoHS MA

1. Assembly

Bottom



3. Specification

- ◇ Input : AC190-265V 50-60Hz
- ◇ Output : DC12V±15%
- ◇ Output current: Max 5A
- ◇ Storage battery: 12V/7AH

4. Function of protect

- ◇ Output Short protection
- ◇ Output Overcurrent protection
- ◇ Output Overvoltage protection

If the load happen to short-circuit, the power supply would not be output, and it will continue to work automatically when the short-circuit is settled.

* Weight and Size are Only Approximation and May be Modified Without Prior Notification.





SWC/1200S/1202S

SWC/1200MDSM

Electromagnetic Lock Series

SWC/1202MDSM



Professional Design & Super Suction
Superior Quality and Reliable Performance



※ Product Overview

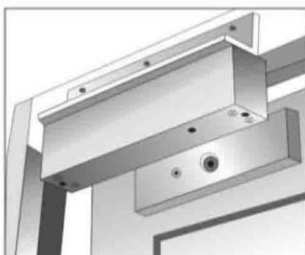
The design of magnetic locks(Electromagnetic lock) is the same as the electromagnet. By using the principle of electromagnetic, when current passes through the silicon steel sheet, magnetic locks will produce powerful suction, thereby helps to tightly absorb iron plate. Even small current will produce huge magnetic, which can effectively control the door.

SmartWorld magnetic locks adopt international leading production equipment and packaging technology, which not only makes our locks' antioxidant capacity of the surface reach the international leading level, but also helps to increase the holding force (higher 20% than other manufacturers). Now our locks have been sold to more than 60 countries and regions around the world, they are widely used in the important places such as airports, subways, banks, prisons, intelligent buildings, intelligent community and so on, and become convenient, fast and intelligent tool for global users, gain good reputation from the customers.

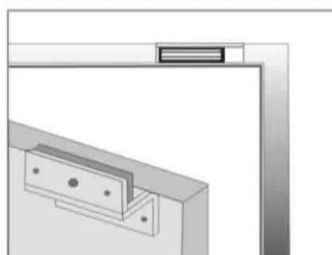
※ Advantage of the products

- ◆ Collinear Load Test 545KG(1200Lbs).
- ◆ Dual Voltage 12 or 24 VDC(optional).
- ◆ Built-in reverse current protection device (MOV).
- ◆ Anti residual magnetism design, anti-wear manufacturing materials.
- ◆ Shell is made of high-strength aluminum alloy, Anodized.
- ◆ Increase the holding Force, Dual Insulative Hosing.
- ◆ MA certified products of China / CE certification of EU.
- ◆ Complete electromagnetic suction working no mechanical failure.

※ Installation drawing



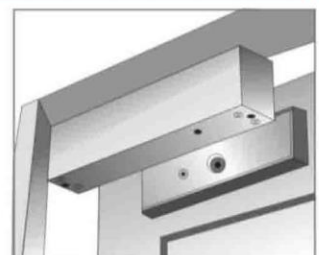
L bracket



ZL bracket



U bracket



Effect of Installation groove for Armature plate

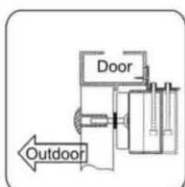
※ Product Parameters

Model	SWC1200S	SWC/1200MDSM	SWC1202S	SWC/1202MDSM
Product Type	Single Door Magnetic Lock		Double door Magnetic Lock	
Product Image				
Lock Size	265L*71W*40H(mm)		530L*71W*40H(mm)	
Armature Plate Dimension	185L*60W*13H(mm)			
Holding Force	545KG (1200Lbs)		545KG (1200Lbs)*2	
Signal output	No	Yes	No	Yes
Input Voltage	DC12V or DC24V			
Working Current	12V/600mA 24V/300mA		12V/600mA*2 24V/300mA*2	
Door Type Applicable	Wooden door , Glass door ,Metal door , Fireproof door			
Time Delay	No	Yes	Yes	Yes
Security Type	Power off to open			
Weight	4.5kg	4.5kg	9kg	9kg

※ Product mounting bracket

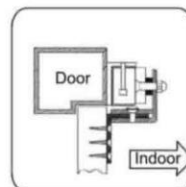
L Mounting Bracket

When the door width is less than 42mm, the width is not enough for Armature Plate of the magnetic locks installed, it needs to add the additional L type bracket.



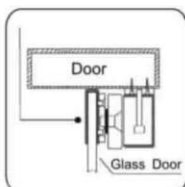
ZL Mounting Bracket

For in-swing door, install the lock body inside and then need to install the ZL bracket at the same time.



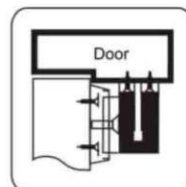
U Mounting Bracket

Magnetic locks installed in glass doors require extra U bracket (for 10-15mm glass door thick).



Armature Plate Installed the Bracket

If the door is thick, it is necessary to use the bracket installed in Armature Plate.



* Weight and Size are Only Approximation and May be Modified Without Prior Notification.

Note: Please carefully read User Manual before usage

For detailed specification and functions, please refer to User Manual; in case of inconsistency, the content in User Manual should be kept.

All data and info in the catalog are carefully checked, any mistake resulted from printing and translation can be disregarded. Vians reserves the authority of explanation for its products.



www.smartworld.ae





Magnetic Lock Bracket Series

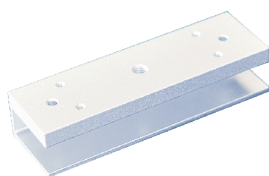
SWC-350L/UB/ZL
SWC-600L/UB/ZL/GB/FB
SWC-800L/UB/ZL
SWC-1200L/ZL

Electro-magnetic Lock Bracket (L Type)



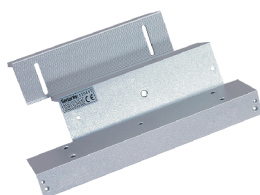
Model	SWC-350L	SWC-600L	SWC-800L	SWC-1200L
Material	High Strength Aluminum, Sandblast Finished			
Door Type Applicable	Wooden / Glass / Metal / Fireproof door			
Opening Mode	90 Degree Door			
Application of lock	SWC-350XX	SWC-600XX	SWC-800XX	SWC-1200XX
Weight	0.14KG	0.27KG	0.33KG	0.58KG

Electro-magnetic Lock Bracket (U Type)



Model	SWC-350UB	SWC-600UB	SWC-800UB
Material	High Strength Aluminum, Sandblast Finished		
Door Type Applicable	Frameless Glass door		
Opening Mode	90 Degree Door		
Application of lock	SWC-350XX	SWC-600XX	SWC-800XX
Weight	0.25KG	0.32KG	0.47KG

Electro-magnetic Lock Bracket (ZL Type)



Model	SWC-350ZL	SWC-600ZL	SWC-800ZL	SWC-1200ZL
Material	High Strength Aluminum, Sandblast Finished			
Door Type Applicable	Wooden / Glass / Metal / Fireproof door			
Opening Mode	90 Degree Door			
Application of lock	SWC-350XX	SWC-600XX	SWC-800XX	SWC-1200XX
Weight	0.5KG	0.75KG	0.82KG	1.3KG

Electro-magnetic Lock Bracket (G Type)



Model	SWC-600GB
Material	High Strength Aluminum, Sandblast Finished
Door Type Applicable	Wooden / Glass / Metal / Fireproof door
Opening Mode	90 Degree Door
Application of lock	SWC-600XX
Weight	0.45KG

Electro-magnetic Lock Bracket (F Type)



Model	SWC-600FB
Material	High Strength Aluminum, Sandblast Finished
Door Type Applicable	Fully Frameless Glass Door
Opening Mode	90 Degree Door
Application of lock	SWC-600XX
Weight	0.85KG

* Weight and Size are Only Approximation and May be Modified Without Prior Notification.



www.smartworld.ae



Note: Please carefully read User Manual before usage

DOUBLE POLE EMERGENCY BREAK GLASS (Resetting Function)



Product Parameter	Parameter Description
Dimensions	86Lx86Wx50H(mm)
Standard Structure	Fireproof Material, Easy to install
Contact Rating	3A@36VDC Max
Output Contact	Two-way independent normally open and normally closed signal
Mechanical Life	500000 tested
Door Type Applicable	Exit Door, Emergency Door
Weight	0.2kg

* Weight and Size are Only Approximation and May be Modified Without Prior Notification.





Electric rim locks are specially designed for access control system and building conversational system. Using the most advanced machine design, adjustable locking pressure, latch direction interchange. Open by electricity, pushbutton, swivel knob or key. Long lifetime, no power consumption when it is standby, high safety. This series locks are used for resident's house, specially for gate, government, school, hotel, factory warehouse.

Product Parameter	Parameter Description
Lock Size	148Lx107Wx55H(mm)
Holding Strength	800KG
Input Voltage	DC12V±10%
Unlocking current	1200mA
Working Current	150mA
Suitable Temperature	-10~+55℃(14-131F)
Door Type Applicable	Wooden door/ Glass door/Metal door/Fireproof door
Signal Output	NO
Security Type	Fail Secure (Standard)
Weight	1.1KG

* Weight and Size are Only Approximation and May be Modified Without Prior Notification.





Magnetic Lock Bracket Series

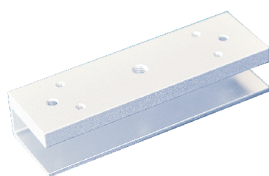
SWC-350L/UB/ZL
SWC-600L/UB/ZL/GB/FB
SWC-800L/UB/ZL
SWC-1200L/ZL

Electro-magnetic Lock Bracket (L Type)



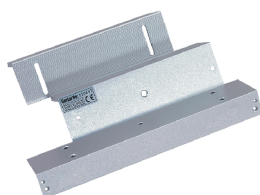
Model	SWC-350L	SWC-600L	SWC-800L	SWC-1200L
Material	High Strength Aluminum, Sandblast Finished			
Door Type Applicable	Wooden / Glass / Metal / Fireproof door			
Opening Mode	90 Degree Door			
Application of lock	SWC-350XX	SWC-600XX	SWC-800XX	SWC-1200XX
Weight	0.14KG	0.27KG	0.33KG	0.58KG

Electro-magnetic Lock Bracket (U Type)



Model	SWC-350UB	SWC-600UB	SWC-800UB
Material	High Strength Aluminum, Sandblast Finished		
Door Type Applicable	Frameless Glass door		
Opening Mode	90 Degree Door		
Application of lock	SWC-350XX	SWC-600XX	SWC-800XX
Weight	0.25KG	0.32KG	0.47KG

Electro-magnetic Lock Bracket (ZL Type)



Model	SWC-350ZL	SWC-600ZL	SWC-800ZL	SWC-1200ZL
Material	High Strength Aluminum, Sandblast Finished			
Door Type Applicable	Wooden / Glass / Metal / Fireproof door			
Opening Mode	90 Degree Door			
Application of lock	SWC-350XX	SWC-600XX	SWC-800XX	SWC-1200XX
Weight	0.5KG	0.75KG	0.82KG	1.3KG

Electro-magnetic Lock Bracket (G Type)



Model	SWC-600GB
Material	High Strength Aluminum, Sandblast Finished
Door Type Applicable	Wooden / Glass / Metal / Fireproof door
Opening Mode	90 Degree Door
Application of lock	SWC-600XX
Weight	0.45KG

Electro-magnetic Lock Bracket (F Type)



Model	SWC-600FB
Material	High Strength Aluminum, Sandblast Finished
Door Type Applicable	Fully Frameless Glass Door
Opening Mode	90 Degree Door
Application of lock	SWC-600XX
Weight	0.85KG

* Weight and Size are Only Approximation and May be Modified Without Prior Notification.



www.smartworld.ae



Note: Please carefully read User Manual before usage

SWC/STRIKE700S

Standard electric strike (Door status signal output)



The SWC electric lock use the embedded installation and looks beautiful, the electromagnetic part is made of high quality magnetic materials and use special technology processing, so it wouldn't have residual magnetism after a long time used, so it ensure the normal work and use. It support the door with 90 degree opened. Our electric strike use high hardness stainless steel material, so it can bear 500kg impact pressure.

Product Parameter	Parameter Description
Lock Size	150Lx40Wx28H(mm)
Holding Stength	500KG
It structure	Stainless Steel
Input Voltage	DC12V±10%
Working Current	200mA
Suitable Temperature	-10~+55°C(14-131F)
Door Type Applicable	Wooden Door, Metal Door, PVC Door
Signal Output	YES
Security Type	Lock When Power off(Standard), Unlock When Power off(Customizable)
Weight	0.4KG



SWC/600S/600MDSM
SWC-602S/602MDSM
SWC/600EA/ES

Electromagnetic Lock Series



CE **FC**




Professional Design & Super Suction
Superior Quality and Reliable Performance

※ Product Overview

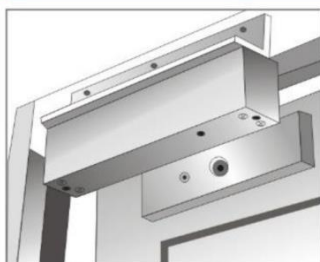
The design of magnetic locks (Electromagnetic lock) is the same as the electromagnet. By using the principle of electromagnetic, when current passes through the silicon steel sheet, magnetic locks will produce powerful suction, thereby helps to tightly absorb iron plate. Even small current will produce huge magnetic, which can effectively control the door.

SmartWorld magnetic locks adopt international leading production equipment and packaging technology, which not only makes our locks' antioxidant capacity of the surface reach the international leading level, but also helps to increase the holding force (higher 20% than other manufacturers). Now our locks have been sold to more than 60 countries and regions around the world, they are widely used in the important places such as airports, subways, banks, prisons, intelligent buildings, intelligent community and so on, and become convenient, fast and intelligent tool for global users, gain good reputation from the customers.

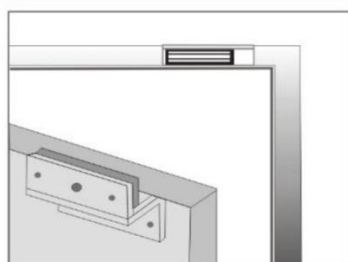
※ Advantage of the products

- ◆ Collinear Load Test 600Lbs.
- ◆ Dual Voltage 12 or 24 VDC (optional).
- ◆ Built-in reverse current protection device (MOV).
- ◆ Anti residual magnetism design, anti-wear manufacturing materials.
- ◆ Shell is made of high-strength aluminum alloy, Anodized.
- ◆ Increase the holding Force, Dual Insulative Hosing.
- ◆ MA certified products of China / CE certification of EU.
- ◆ Complete electromagnetic suction working no mechanical failure.

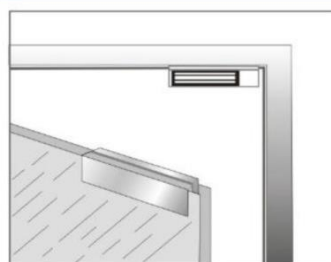
※ Installation drawing



L bracket



ZL bracket



U bracket



Effect of Installation groove for Armature plate

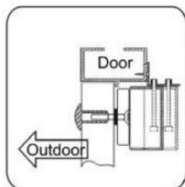
※ Product Parameters

Model	SWC/600S	SWC/600MDSM	SWC/602S	SWC/602MDSM	SWC/600EA	SWC/600ES
Product Type	Single Door Magnetic Lock		Double door Magnetic Lock		Single Door Magnetic Lock With Mortise Mount	
Product Image						
Lock Size	250L*47W*26H(mm)		500L*47W*26H(mm)		229L*38W*27H(mm)	
Armature Plate Dimension	180L*38W*11H(mm)					
Holding Force	280kg(600Lbs)		280kg(600Lbs)*2		280kg(600Lbs)	
Signal output	No	Yes	No	Yes	No	Yes
Input Voltage	DC12V or DC24V					
Working Current	12V/480mA 24V/240mA		12V/480mA*2 24V/240mA*2		12V/480mA 24V/240mA	
Door Type Applicable	Wooden door , Glass door ,Metal door , Fireproof door					
Security Type	Power off to open					
Weight	2kg	2kg	4kg	4kg	2kg	2kg

※ Product mounting bracket

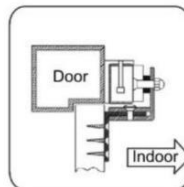
L Mounting Bracket

When the door width is less than 42mm, the width is not enough for Armature Plate of the magnetic locks installed, it needs to add the additional L type bracket.



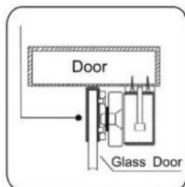
LZ Mounting Bracket

For in-swing door, install the lock body inside and then need to install the LZ bracket at the same time.



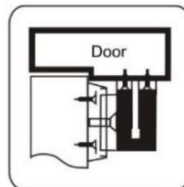
UB Mounting Bracket

Magnetic locks installed in glass doors require extra U bracket (for 10-15mm glass door thick).



Armature Plate Installed the Bracket

If the door is thick, it is necessary to use the bracket installed in Armature Plate.



* Weight and Size are Only Approximation and May be Modified Without Prior Notification.

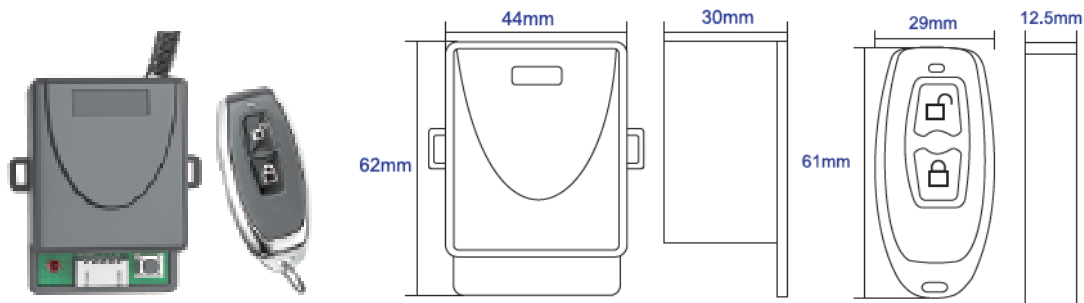


www.smartworld.ae



Note: Please carefully read User Manual before usage

REMOTE CONTROL EXIT BUTTON



The RCEPB is the remote control for access control with metal transmitter and designed with small and beautiful appearance. Perfect for receptionists to "buzz" people through a secured area. Allows for 30-60ft (depending on obstructions) of wireless range between receiver and transmitter.

Product Parameter	Parameter Description
Dimensions	75Lx75Wx28H(mm)
Input	12VDC (24VDC by Optional)
Current	8mA
Contact Output	NO、NC、COM
Transmitting Freq	433.92MHZ
Suitable for	access control
Finished for Shell	Plastic, Abrasion Resistant
Capable of	to 30 Transmitter
Weight	0.09kg

* Weight and Size are Only Approximation and May be Modified Without Prior Notification.

