

C2 Pro

Professional PoE Fingerprint & Card Terminal



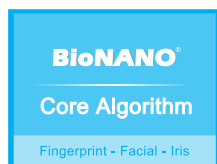
C2 Pro is a high performance time and attendance terminal aimed to the middle and high-end market. Equipped with highly efficient Dual-Core 1GHz processor, C2 Pro sustains higher performance by finishing the comparison in less than 0.5 seconds. Friendly GUI and 3.5 inches TFT LCD make C2 Pro is easy to use. It support several RFID reader module (HID, ALLEGION or ANVIZ) and RS485, PoE-TCP/IP or WiFi communication for different requirements. Based on Linux operation system, C2 Pro offers SDK and EDK for further customization of the system. It also provides 1 relay for the ringbell and a connecting to the Access Control system. All the above to meet your requirements.

aptiQ



BioNANO - The core algorithm

BioNANO is applied in all Anviz biometric-based products used for identification.



- Independent research and development
- Suitable for both wet and dry fingers
- Automatically restores the broken lines in fingerprint images
- Extraction of features in worn fingerprints
- Fingerprint template auto update

Functional Parameter

Item	Specifications	
Platform	Linux	
Hardware	CPU	Dual-Core 1GHz Processor
	Memory	512M DDR3+2GB Flash
	LCD	3.5" TFT
	LED	Three-color indicator light
Registration and verification	Operating Temperature	-30°C to 60°C
	Humidity	10% to 90%
	Verification Mode	Fingerprint (1:N, 1:1), Password, Card
	Fingerprint capacity	10,000 (1:N)
	Logs	100,000
RFID	HID iClass Card	Optional
	Anviz	Standard 125KHz EM Optional 13.56MHz Mifare/ISO 14443A
Interface	WiFi	Yes
	TCP/IP	Yes
	RS485	Yes
	Relay	1 Relay
	USB	1 Host
	PoE	Standard IEEE802.3af
	Wiegand	Wiegand Output
Web Server	Yes	
Power	DC 12V 1A	
Dimensions	140(w) x 190(h) x 32(d) mm (5.51x7.48x1.26")	
Certificates	CE, FCC, RoHS	

Features

- Linux platform to provide a safe and stable performance
- Comparison time in less than 0.5s
- Embedded fingerprint templates to the IC card to provide a more safety comparison on 1:1
- AFOS408 the latest fingerprint reader, touch on activation infrared, optical imaging technology
- PoE-TCP/IP, R3485 & WiFi are provided to satisfy different needs
- Provide 1 relay for bell and connecting to Access Control system
- New material that makes it more appealing and durable
- Ergonomic design with new rubber keypad to provide a better user experience
- Bigger and brighter 3.5 inch color display
- Fast & easy installation through a wall-mounted board
- Ease the experience of user by brand new UI design



USB Drive & Host



Card Reader



Slim



Self-Service
Record Inquiry



POE



CrossChex

Time Attendance and Access Control Management System

CrossChex is an intelligent management system of time attendance and access control devices, which is applicable to all Anviz time attendances and access controls. The user-friendly and interactive design makes this system very easy to operate, the powerful function makes this system realize the management of department, staff, shift, payroll, access authority, and exports different time attendance and access control reports, satisfying different time attendance and access control requirements in different complicated environments.



CrossChex Cloud

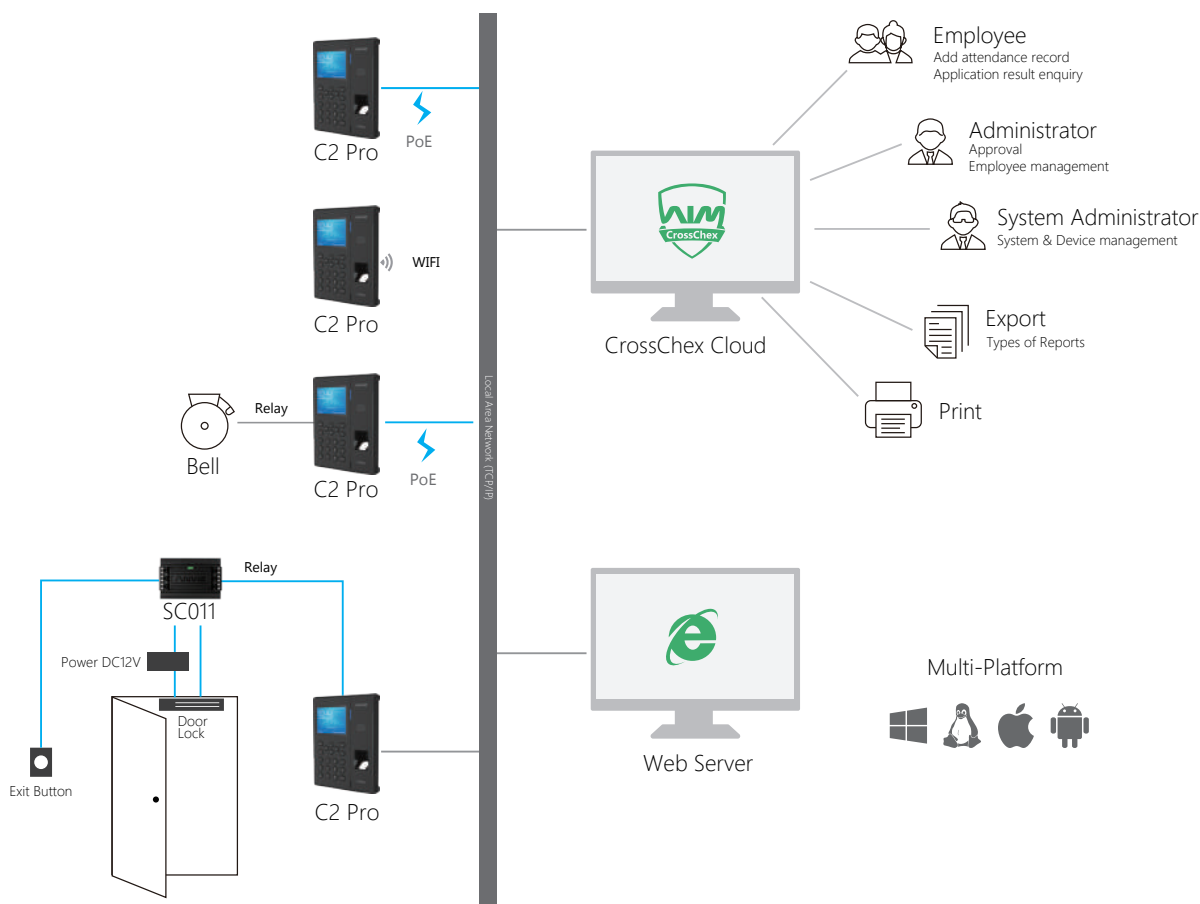
Advantages

- No need to install, maintain, or upgrade software
- No expensive computers to purchase or maintain
- Access data in real-time from any PC and Mobile with Internet
- Receive real-time alerts to your email
- Multiple encryptions and redundancy backup for data safety.

Multi-Platform



Please scan this QR code to
get CrossChex Cloud App





Please scan this QR code
to win Anviz vCard

About Anviz

Founded in 2001, Anviz is a global leader in the field of intelligent security including Biometric, RFID and Surveillance. Cutting edge R&D, ISO certified manufacturing and global brand recognition provide our partners with the fast track to success!

Anviz is at the forefront of biometric, RFID, and surveillance technologies. Through constant R&D, ISO certified manufacturing and global brand recognition, Anviz is an industry leader. Producing high-quality, cost-effective security solutions have helped amass a global client base of over 60 million customers in over 100 countries.

For more information, visit www.anviz.com, or email us sales@anviz.com.



FaceDeep 3 Series

Smart Face Recognition Terminal



Model#: FaceDeep 3, FaceDeep 3 Pro, FaceDeep 3 4G, FaceDeep 3 QR
*Temperature Reader IRT Version



Anviz FaceDeep 3 Series is the world's most beloved face recognition terminal, providing strong features. Powered by Anviz the facial biometric BioNANO® algorithm and AI deep learning technology, FaceDeep 3 Series offers the best matching speed, accuracy, and level of security, even while wearing a mask. Work with Anviz CrossChex Series, provide flexible platforms for your business and usability for diverse access control and time attendance sites, from SMB to enterprise.



Live Face Detection



Face Masks Detection



RFID Cards



Support Mobile Access



Wireless Communication



Temperature Reader

Features



High-Speed CPU

A High-performance Linux CPU implementing a face-capturing of fewer than 0.3 seconds provide an efficient workplace.



Extensive Interfaces

It allows flexible system design with extensive communication interfaces such as WiFi, TCP/IP and RS485. In addition, it provides Exit Button, Wiegand Output & Input, and Relay Outputs to offer any applications flexibility.

BioNANO®

Anviz Facial Biometric Technology

Powered by Anviz the facial biometric BioNANO® algorithm and AI deep learning technology, FaceDeep 3 Series offers the best matching speed, accuracy, and level of security, even while wearing a mask.



Confidence in All Environments

Anviz's Dual Camera technology enables IR and visual face recognition, and automatically adapts LED lights based on ambient lighting conditions for enhanced capturing in different environments, even in complete darkness.



Intuitive UI

Its 5-inch TFT, 720*1280 high-resolution touch screen provides a dynamic user experience. The easy-to-use, graphics-based navigation allows users to exploit the maximal capabilities of the FaceDeep 3 Series.



Employee Health Screening

FaceDeep 3 Series IRT version supports temperature measuring and cost advantages with the most economical temperature detection option to fit any budget of a business.

Mounting Brackets



Station Mount



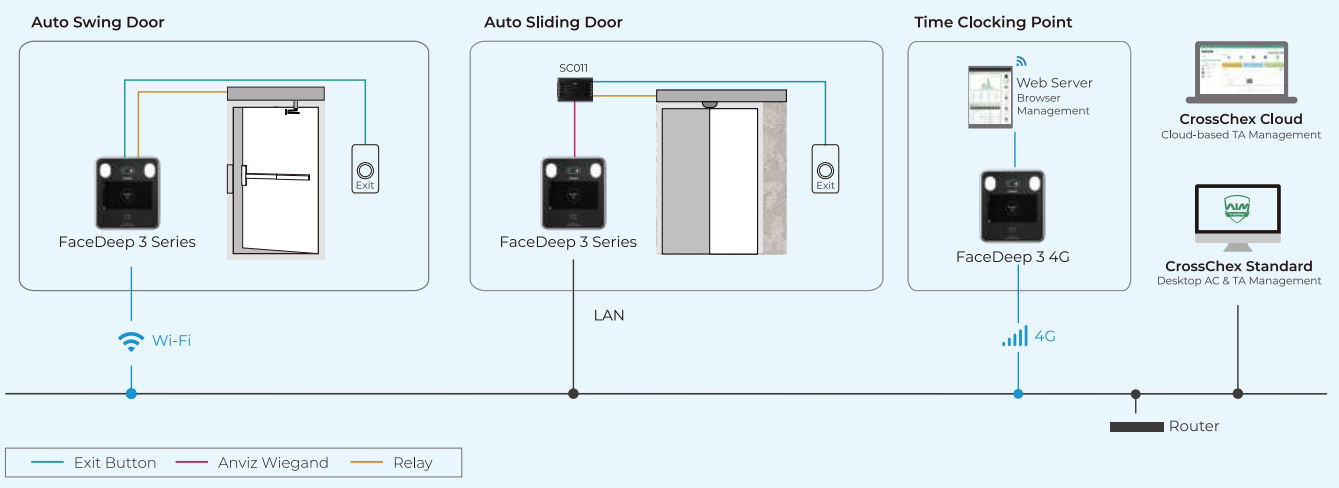
Turnstile Mount





Desktop Mount

*Available for Sale

Configuration



Specification

Model Name		FaceDeep 3	FaceDeep 3 Pro	FaceDeep 3 4G	FaceDeep 3 QR
					
General	Identification Mode	Face, Card, ID+Password			Face, EU Green Pass Code, ID+Password
	Face Recognition Distance	0.5m-1.5m (19.69-59.06")			
	Face Recognition Speed	<0.3s			
	QR Code Scanning Distance	-			3~10cm (1.18~3.94")
	QR Code Reading Angle	-			Roll 360 ° Pitch ± 80° Yaw ± 60°
Capacity	RFID Options	125kHz EM	13.56MHz MIFARE	13.56MHz MIFARE	-
	Max. Users	6,000	6,000	6,000	6,000
	Max. Cards	6,000	6,000	6,000	-
	Max. Logs	100,000	100,000	100,000	100,000
Function	Live Face Detection	√	√	√	√
	Vaccination Detection	-	-	-	Support 1st / 2nd / 3 rd Dose Vaccination Detection
	Negative Test & Recovery Result Detection	-	-	-	Yes
	Temperature Detection	IRT Version			
	Mask Detection	√			
	Voice Prompt	√			
	Multiple Languages	√			
	Bluetooth Mobile Access	-	√	-	-
Hardware	CPU	Dual 1.0GHz			
	Camera	Dual Camera (VIS & NIR)			
	LCD	5" TFT Touch Screen Resolution 720*1280			
	Smart LED	Automatically Adapt LED Light			
	Working Environment	Indoor			
	Working Temperature	-5°C~60°C (23°F~160°F)			
	Humidity	0% to 95%			
	Power Input	DC 12V 2A			
	Dimensions (W x H x D)	146*165*34 mm (5.75*6.50*1.34")			
Interface	TCP/IP	√			
	RS485	√			
	USB PEN	√			
	Wi-Fi	√			
	Relay	√			
	Tamper Alarm	√			
	Wiegand	Input & Output			
	Door Contact	√			
Software		CrossChex Standard & CrossChex Cloud			

*FaceDeep 3 QR: GreenPass QR Code Scanning Solution to Verify EU Digital COVID Certificates

ANVIZ

Anviz Global

32920 Alvarado-Niles Rd Ste 220, Union City, CA 94587 Toll-free: 1-855-268-4948 | sales@anziv.com | www.anviz.com

©2022 Anviz Global Inc. Anviz and identifying product names and numbers herein are registered trademarks of Anviz Global Inc. All non-Anviz brands and product names are trademarks or registered trademarks of their respective companies. Product appearance, build status and/or specifications are subject to change without notice.

FaceDeep 5

AI Based Smart Face Recognition Terminal



Liveness Face
Detection

AI

AI Deep Learning
Architecture



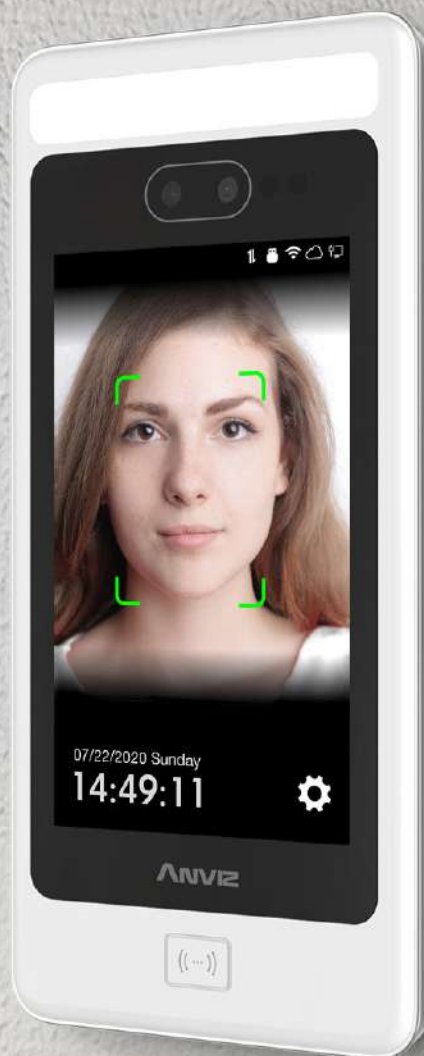
IP65



Mask
Detection



125 KHz EM,
13.56 MHz MiFARE,
DESFire



- New generation touchless solution for the people to access control on the entrance or record time attendance and simultaneously check mask-wearing without having to touch a terminal or gate.
- Built-in IR and visual cameras integrated with Anviz's unique BioNANO[®] algorithm to produce the best in class live face recognition performance
- Mask not-wearing alert
- Register up to 50,000 users for dynamic face authentication
- Recognition distance up to 2M with matching speed < 300ms by 1: 50,000.
- Equipped with a 5" IPS full angles TFT-LCD screen.

FaceDeep 5

AI Based Smart Face Recognition Terminal

■ Features



1GHz Linux Based Processor

The new Linux based 1GHz processor ensures the 1:50,000 comparison time less than 0.3 second.



Wi-Fi Flexible Communication

Wi-Fi function can realize stable wireless communication and realize flexible installation of equipment.



Liveness Face Detection

Live face recognition based on infrared and visible light.



Wide Angle Camera

The ultra-wide-angle camera enables fast face recognition.



IPS Full Screen

The colorful IPS screen ensures the best interaction and user experiences and can also provide clear notifications to the users.



Web Server

The web server ensures the easily quick connection and self management of the device.



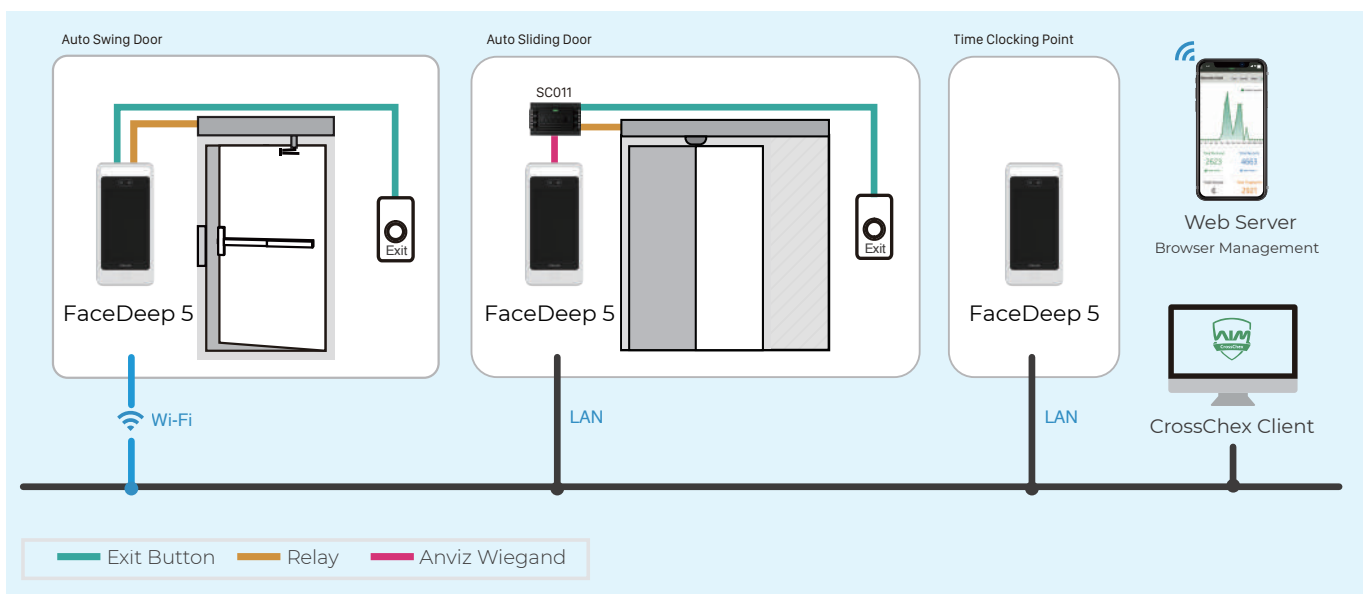
Cloud Application

The web based cloud application let you access to the device by any mobile terminal from anytime and anywhere.

■ Key Specifications

Max. Users	50,000
Max. Cards	50,000
Max. Logs	100,000
Communication	TCP/IP, RS232, Wi-Fi
Identification Mode	Face, Password, RFID Card
Identification Distance	0.3~2 M
Identification Speed	<300ms
RFID Card	125 KHz EM, 13.56 MHz: MiFARE, DESFire
CPU	Dual Core Linux Based 1GHz CPU with Enhanced AI Computing Power
Temperature Range	-10 °C (14 °F)- 50 °C (122 °F)
Humidity	20% to 90%
Power	DC12V 3A
IP Ratings	IP65
Camera Angle Range for Verification	74.38°(Visual), 67.57°(Infrared)

■ System Configurations



ANVIZ
POWERING A SMARTER WORLD

Anviz Global Inc.

41656 Christy Street Fremont, Fremont, CA, 94538

Tel: 1-510-573-6552 | Toll-free: 1-855-268-4948 | sales@anziv.com | www.anziv.com

©2020 Anviz Global Inc. Anviz and identifying product names and numbers herein are registered trademarks of Anviz Global Inc. All non-Anviz brands and product names are trademarks or registered trademarks of their respective companies. Product appearance, build status and/or specifications are subject to change without notice.