



MODULAR CLEANROOM

- One module size – many possibilities
- Quick setup on site
- Pre-assembled modules
- Flush wall system – windows available
- Individual configuration of the ceiling grids
- Energy-saving LED panels
- Powerful FFUs with H14 filter



MÖGLICH. KOMPETENT. FLEXIBEL.

MODULARE CLEANROOM

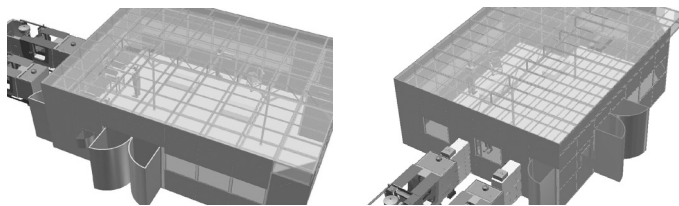
ONE MODULE SIZE – MANY POSSIBILITIES: THE NEW MODULAR CLEANROOM

Based on many years of experience with work under cleanroom conditions mkf has developed a flexible cleanroom system. It is based on aluminium profiles with closed grooves and adapts to your individual requirements. It benefits from the advantages of the aluminium profile system while meeting the requirements for cleanrooms.

Whether you want to enlarge, downsize or customise your cleanroom later on – it can be adapted quickly and flexibly to suit your changing individual requirements.

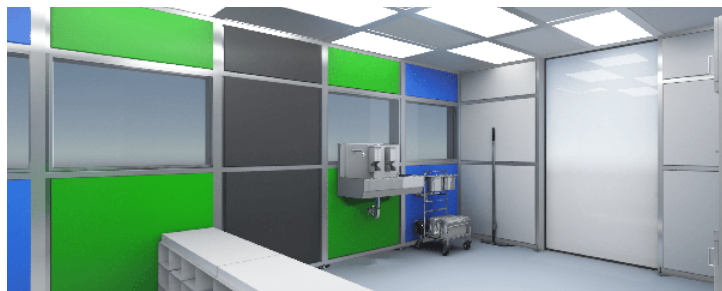
ADAPTATION TO YOUR PROCESSES

Do you want to adjust your cleanroom to your automatized processes? We like to advise and assist you with the integration and realization.



INDIVIDUEL DESIGN

Give your cleanroom its own identity: Use coloured accents for individual design. All closed panels are available in white, silver metallic and several other standard colours. We would also be pleased to advise you on further colouring options.



Configure your individual cleanroom using our ceiling and wall modules:

WALL MODULE

Dimensions of the wall modul: approx. 1280 mm x 2800 mm, divided into 3 panels

- Wall module 1: closed panels
- Wall module 2: glazed middle panel (approx. 860 mm x 1200 mm), closed lower and upper panel
- Wall module 3: glazed middle panel (approx. 860 mm x 1200 mm) lower panel with return air system, closed upper panel
- Wall module 4: closed upper and middle panel, lower panel with return air system

CEILING MODULE

Dimensions of the base module: approx. 1280 mm x 3880 mm divided into 6 panels, inner dimensions: approx. 1200 mm x 600 mm

Please chose 6 panels per ceiling module:

- Inspection Opening
- Fan filter unit: natural aluminium, approx. 1182 x 582 x 350 mm
1.170 m³ @ 230 Pa
Sconnector board with GST18i socket
RS485 / ebmbus interface
- H14 filter: approx. 1190 x 590 x 110 mm
separation efficiency = 99.995 %,
grip protection, EPDM flat seal,
temperature-resistant up to: 70 °C / 100 % RH-
- Lightening Unit: LED Panel, approx. 598 x 1198 x 100 mm
daylight white – 6000 K, 60 W, 6000 lm,
dimmable

CEILING MODULE WITH PLENUM

Dimensions ceiling module with plenum:
wide x height x deep: approx. 1280 mm x 3880 mm x 600 mm

fill elements with rigid foam - PVC