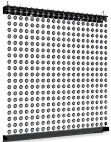


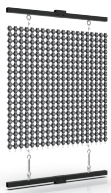
YD DOUBLE PROTECTION

LED MESH SCREEN



YD-XSP-20

P03



YD-WP-20

P05



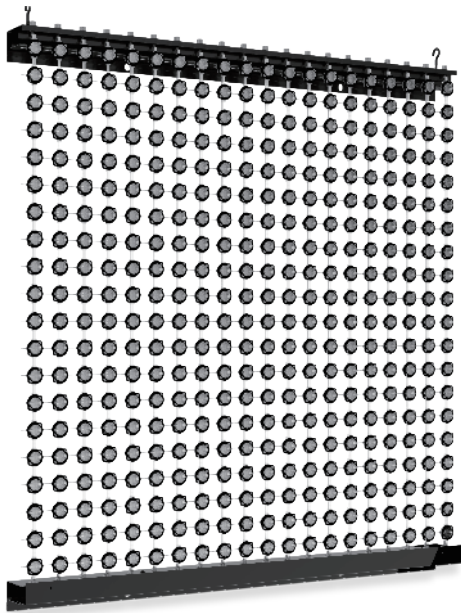
YD-TP-15

P07

- High transparent rate, it hardly affects the internal lighting of the building during the day.
Convenient installation, wide application
- Double protection LED light source adopt the high flame retardant materials, protection grade IP68.
- Outdoor UV resistance, high flame retardant, high and low temperature resistance.
Suitable for all kinds of large outdoor public places, as well as the exterior of high-rise buildings.

YD-XSP-20

LED Steel Mesh

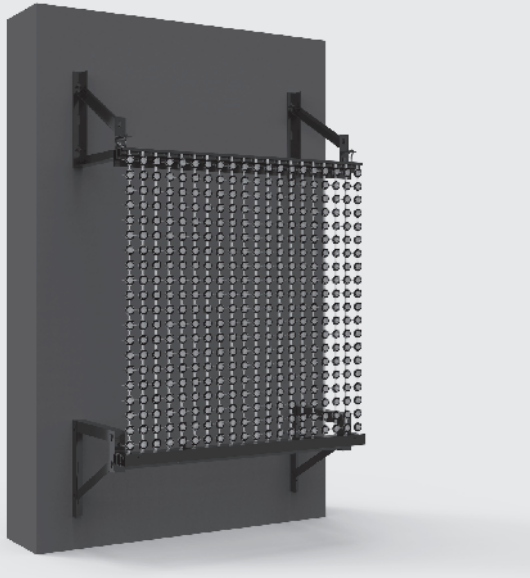


- This screen use 1.5 mm stainless steel wire mesh and $\Phi 20$ LED fixtyres to fix LED lights, the minimum center distance of two lights is 5 cm.
- This screen is with easy installation, maintenance, and easy transportation.
- It is mainly applied to all kinds of outdoor LED screen.
- It can transmit real time image, text, video by connecting to computer, it can also be controlled by single controller or offline controller with SD card.

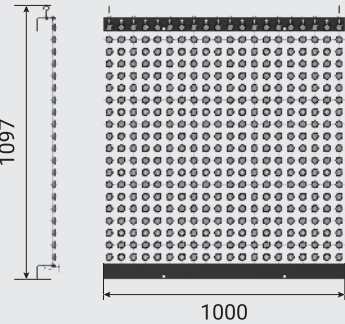
Specification

LED Color	RGB...
Weight	2616g/set
Beam Angle	120°
Outer Shell Material	Die-cast aluminum+RPVC
Size	1000mm×1097mm×93mm (customizable)
Environment	Outdoor

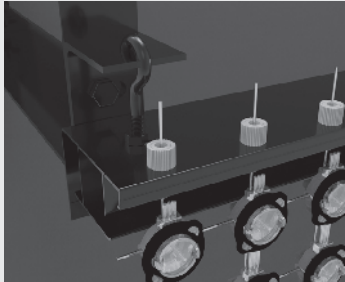
Installation Diagram



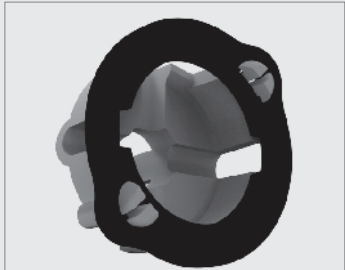
Luminosity Distribution



Product Details



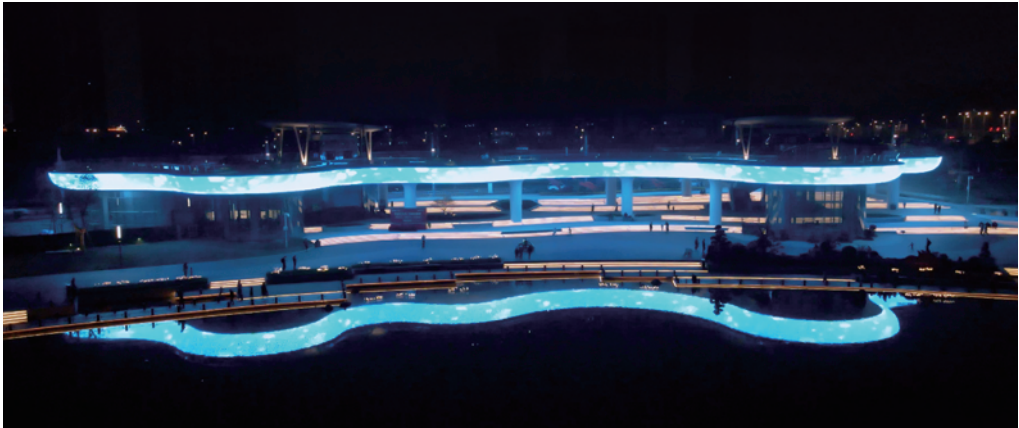
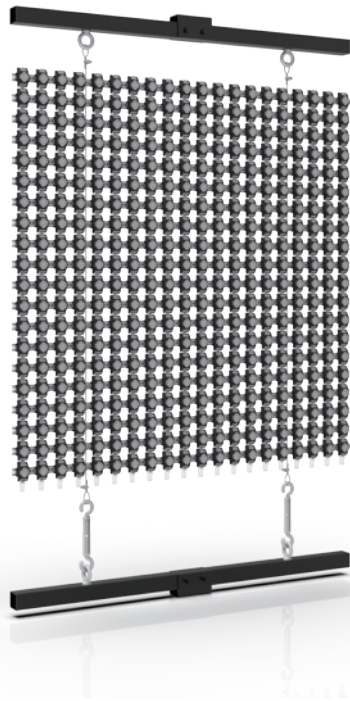
Adjustable fixture



Point light source fixed base

YD-WP-20

LED Steel Mesh

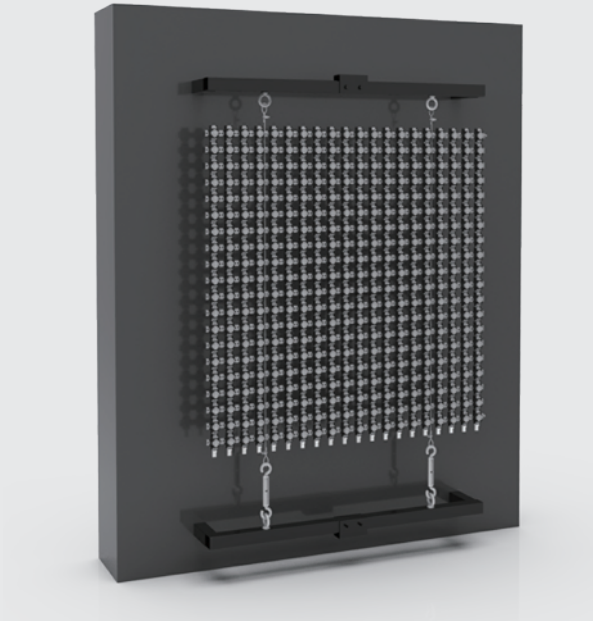


- This display is a LED pixel screen composed of point light sources, which is mainly used for outdoor large advertising screens.
- It has excellent pixel lighting effect and high brightness in the daytime and at night.
- It can achieve RGB full color dynamic effect. With grid design, good permeability, effectively reduce wind resistance, applicable to all kinds of large outdoor public places and high-rise buildings facade.

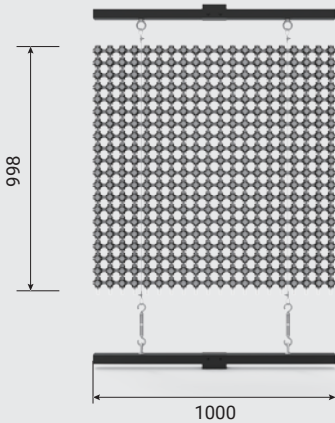
Specification

LED Color	RGB...
Weight	15000g/set
Beam Angle	110°、115°
Outer Shell Material	Die-cast aluminum+RPVC
Size	998mm×1000mm×25mm (customizable)
Environment	Outdoor

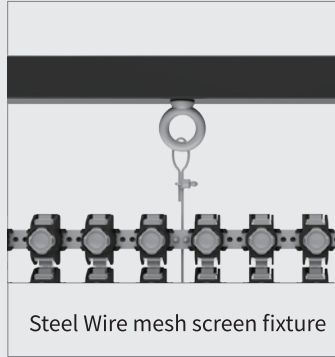
Installation Diagram



Luminosity Distribution

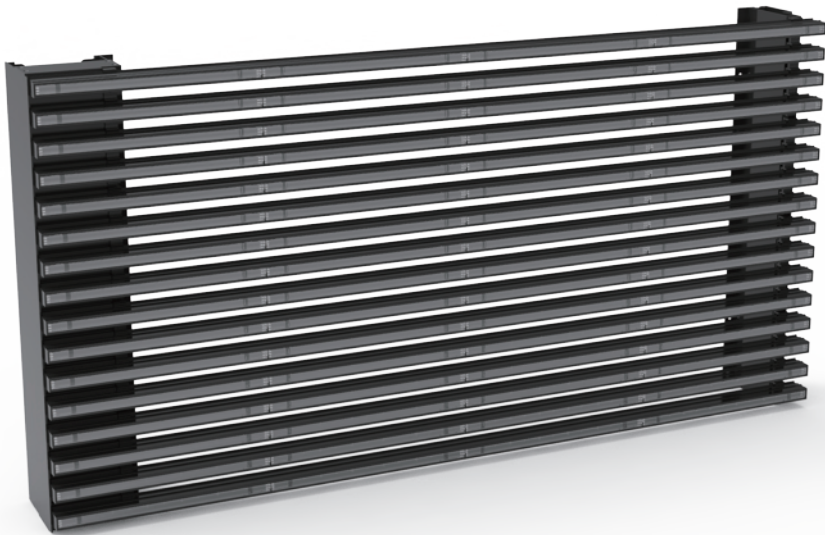


Product Details



YD-TP-15

LED Steel Mesh

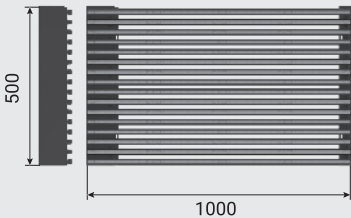


- It adopts hollow mesh, hollow low wind resistance and high light transmission structure in the middle to reduce the weight of the module itself, and can realize the indoor lighting requirement under the premise of achieving waterproof function.
- The product adopts three-dimensional multi-angle refractive optical design to perform three primary colors of red, green and blue, and it can be mixed and output in different directions to meet the visual effect requirements.

Specification

LED Color	RGB...
Weight	11660g/set
Beam Angle	120°
Outer Shell Material	Die-cast aluminum+RPVC
Size	1000mm×500mm×124mm (customizable)
Environment	Outdoor

Product Size(mm)



Installation Diagram



Product Details

