



202308 - V2.8



Providing customized and cost-effective
explosion-proof solutions for
a wide array of hazardous and industrial applications.

CATALOGUE

www.khjled.com



SHENZHEN KHJ SEMICONDUCTOR LIGHTING CO.,LTD

Address: 4-5 Floor, Building 1,Chuangxin industrial park,Xintian community,
Guanlan, Longhua new district, Shenzhen ,China.

Tel: +86-755-82949977

Fax: +86-755-82949800

E-mail: khjledsales@khj.cn

Web: www.khjled.com



Scan here to find more info



RoHS

SHENZHEN KHJ SEMICONDUCTOR LIGHTING CO., LTD

Company Profile

Shenzhen KHJ Semiconductor Lighting Co., Ltd was established in 2009 engaged in R&D, manufacturing and marketing. KHJ's products enlarge from single to two major parts: safety lighting and industrial lighting. KHJ committed to become a Global, innovative, Responsible, Public lighting solution provider and the leader of safety lighting segments.

KHJ's culture: Self-discipline and Social Commitment



**Focus On Security And Energy-Saving
Carry Brightness And Sustainable Future**

Product Categories

KHJ-LED Explosion Proof Lighting Focus on researching explosion proof lights in the hazardous environment areas where a potential for explosion and/or fires exist due to flammable gases ,vapors and dust in the air, enhancing the strength of housing, offering failsafe design resistant to the fire, spark, electric arc, hot surface, ensuring the safety .

KHJ-Industrial Lighting Focus on researching the industrial lights used in areas with industrial vibration, corrosion, high temperature, enhancing products' anti-vibration, protective performances, environmental adaptability and improving energy efficiency to assure a continuous production and energy saving.



Test Capacity

With rapid development, KHJ pay more attention to product's quality and build laboratories with test equipment, Thus 90% testing items could be done by us.

Production Capacity

Possessing 3,000 square meter factory area, several advanced automatic SMT production lines, semi-automatic DIP and assembly production lines, our daily average output can reach more than 2,000 set of industrial luminaires .

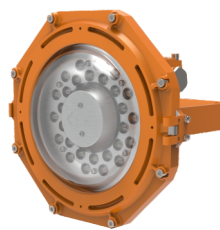


LED Explosion Proof Light-SeaLion Series



| | |
|-----------------------------------|--|
| Ex Mark: | Gas: II 2 G Ex db IIC T4/T5 Gb Dust: II 2 D Ex tb IIIC T115°C/105°/T95°C Db IP66 |
| Certificate: | ATEX Certification NO.: TÜV 20 ATEX 8608 X IECEx Certification NO.: IECEx TUR 20.0086X |
| Classification: | Group II, Zone 1 & 21 and 2 & 22 |
| Operating Voltage: | Normal:20-30 VAC/100-277 VAC/347-480 VAC 20-30 VDC/28-42 VDC/141-392 VDC/491-679 VDC Emergency:220-240VAC/311-339VDC |
| Power: | Normal:30W/45W/60W/80W/100W/120W/150W/ 200W/240W/300W Emergency:10W |
| Weight: | Normal:8.5Kg(30-80W)/11Kg(100-150W)/14Kg(200-300W) Emergency:9.5Kg(30-80W)/12Kg(100-150W)/15Kg(200-240W) |
| Size: | φ 275*195mm(30-80W)/ φ 330*197mm(100-150W) φ 415*197mm(200-300W) |
| Ambient Temperature: | Normal:-40°C+55°C/Emergency:-20°C+55°C |
| Cable Entries: | 2XM20*1.5 (M25*1.5,NPT 3/4" are optional) |
| IP Code: | IP66 |
| Light Duration(Emergency): | 3h |

LED Explosion Proof Light-Golden Frog Series



| | |
|-----------------------------|---|
| Ex Mark: | Gas: II 2 G Ex d IIB T5 or T6 Gb Dust: II 2 D Ex t IIIC T95°C or T80°C Db IP66 |
| Certificate: | ATEX Certificate No.:LCIE 12 ATEX 3070 X IECEx Certificate No.: IECEx CQM 12.0033X |
| Classification: | Group II , Zone 1 & 21 and 2 & 22 |
| Operating Voltage: | 24-48 VAC/100-240 VAC 10-30 VDC/24-48 VDC/141-339 VDC |
| Power: | 30W/60W |
| Weight: | 5.5Kg |
| Size: | 311*284*190mm |
| Ambient Temperature: | -40°C+55°C |
| Cable Entries: | 2XM20*1.5 (M25*1.5,NPT 3/4" are optional) |
| IP Code: | IP66 |

LED Explosion Proof Light-Forest Frog Series



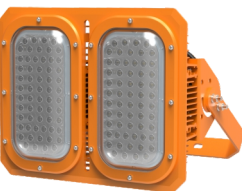
| | |
|-----------------------------|---|
| Ex Mark: | Gas: II 2 G Ex db IIC T6...T4 Gb II 2 G Ex db eb IIC T6...T4 Gb Dust: II 2 D Ex tb IIIC T80°C...T130°C Db |
| Certificate: | ATEX Certificate No.:EPT 18 ATEX 2977 X IECEx Certificate No.:IECEx CQM 15.0039X |
| Classification: | Group II , Zone 1 & 21 and 2 & 22 |
| Operating Voltage: | 24-48 VAC/100-277 VAC 10-30 VDC/24-48 VDC/141-392 VDC |
| Power: | 30W/45W/60W |
| Weight: | 3.3Kg |
| Size: | φ 220*191mm |
| Ambient Temperature: | -40°C+55°C |
| Cable Entries: | 1XM25*1.5 (NPT 3/4" is optional) |
| IP Code: | IP66 |

LED Explosion Proof Light-Tank Series



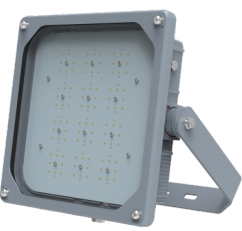
| | |
|-----------------------------|---|
| Ex Mark: | Gas: II 2 G Ex db IIC T* Gb Dust: II 2 D Ex tb IIIC T* Db IP66 |
| Certificate: | ATEX Certification NO.: TÜV 21 ATEX 8775 X IECEx Certification NO.: IECEx TUR 21.0070X |
| Classification: | Group II , Zone 1 & 21 and 2 & 22 |
| Operating Voltage: | 100-277 VAC,20-30 VAC,347-480 VAC 141-392VDC,491-679 VDC |
| Power: | 80W/100W/120W(Single lamp) 160W/200W/240W(Two lamps) 320W/400W/480W(Four lamps) |
| Weight: | 8.3Kg(80W~120W)/13Kg(160W~240W) 27kg(320W~480W) |
| Size: | 332*212*142mm(80W~120W) 332*426*142mm(160W~240W) 671*426*142mm(320W~480W) |
| Ambient Temperature: | -40°C+55°C |
| Cable Entries: | 2XM20*1.5 (M25*1.5,NPT 3/4" are optional) |
| IP Code: | IP66 |

LED Explosion Proof Light-Polar Bear Series



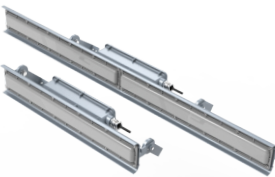
| | |
|-----------------------------|---|
| Ex Mark: | Gas: II 3 G Ex nR IIC T* Gc Dust: II 3 D Ex tc IIIC T* Dc IP66 |
| Certificate: | ATEX Certificate No.:LCIE 14 ATEX 1014 X IECEx Certificate No.: IECEx CQM 13.0044X |
| Classification: | Group II , Zone 2 & 22 |
| Operating Voltage: | 100-277 VAC/220-240 VAC/100-130 VAC 141-392 VDC/311-339 VDC/141-184 VDC |
| Power: | 80W/120W/160W/200W/240W |
| Weight: | 7.3Kg(80W) 11Kg(120W,160W) 18.4Kg(200W,240W) |
| Size: | 210*400*161mm(80W) 260*400*161mm(120W,160W) 500*400*161mm(200W,240W) |
| Ambient Temperature: | -40°C+55°C |
| Cable Entries: | 2XM20*1.5 (M25*1.5,NPT 3/4" are optional) |
| IP Code: | IP66 |

LED Explosion Proof Light-Brown Bear Series



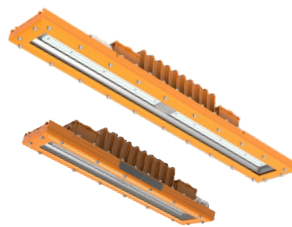
| | |
|-----------------------------|--|
| Ex Mark: | Gas: II 3 G Ex nR IIC T5 or T6 Gc Dust: II 3 D Ex tc IIIC T95°C or T85°C Dc |
| Certificate: | ATEX Certificate No.:TÜV 15 ATEX 7672 X |
| Classification: | Group II , Zone 2 & 22 |
| Operating Voltage: | 100-277 VAC 141-392 VDC |
| Power: | 80W/100W/120W/150W |
| Weight: | 10.5Kg |
| Size: | 336*336*163mm |
| Ambient Temperature: | -40°C+55°C |
| Cable Entries: | 2XM20*1.5 (M25*1.5,NPT 3/4" are optional) |
| IP Code: | IP66 |

LED Explosion Proof Light-Kingfish Series



| | |
|----------------------|--|
| Ex Mark: | Gas: II 2 G Ex eb mb IIC T5/T6 Gb Dust: II 2 D Ex tb IIIC T95°C/T80°C Db IP66 |
| Certificate: | ATEX Certificate No.: Pending IECEx Certificate No.: Pending |
| Classification: | Group II, Zone 1 & 21 and 2 & 22 |
| Operating Voltage: | 100-277 VAC 141-392 VDC |
| Power: | 18W/36W/48W(0.6m),48W/64W(1.2m) |
| Weight: | 2.7Kg(0.6m)/4.3Kg(1.2m) |
| Size: | 600*110*103mm(18W/36W/48W) 1200*110*103mm(48W/64W) |
| Ambient Temperature: | -40°C~+55°C/-40°C~+65°C |
| Cable Entries: | 2XM20*1.5 (M25*1.5,NPT 3/4" are optional) |
| IP Code: | IP66 |

LED Explosion Proof Light-Swordfish Series



| | |
|----------------------------|---|
| Ex Mark: | Gas: II 2 G Ex d eb op is IIB T6 Gb Dust: II 2 G Ex d eb op is IIC T6 Gb II 2 D Ex tb op is IIIC T80°C Db |
| Certificate: | ATEX Certificate No.:TÜV 15 ATEX 7673 X IECEx Certificate No.: IECEx TUR 16.0028X |
| Classification: | Group II, Zone 1 & 21 and 2 & 22 |
| Operating Voltage: | Normal:100-277 VAC/24-48 VAC 10-30 VDC/24-48 VDC/141-392 VDC Emergency:220-240 VAC/311-339 VDC |
| Power: | Normal:18W/36W/48W(0.6m) 36W/48W/56W/72W(0.9m) Emergency:5W |
| Weight: | Normal:6.9Kg(0.6m)/9.2Kg(0.9m) Emergency:7.3Kg(0.6m)/9.6Kg(0.9m) |
| Size: | 600*136*124mm(18W/36W/48W) 900*136*124mm(36W/48W/56W/72W) |
| Ambient Temperature: | -20°C~+55°C |
| Cable Entries: | 2XM20*1.5 (M25*1.5,NPT 3/4" are optional) |
| IP Code: | IP66 |
| Light Duration(Emergency): | 3h |

LED Explosion Proof Light-Firefly Series



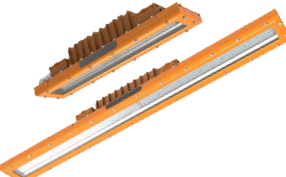
| | |
|----------------------|--|
| Ex Mark: | Gas: II 2 G Ex db op is IIC T5 or T6 Gb Dust: II 2 D Ex tb op is IIIC T95°C or T80°C Db IP66 |
| Classification: | Group II, Zone 1 & 21 and 2 & 22 |
| Operating Voltage: | 100-277 VAC 141-392 VDC/24 VDC |
| Power: | 12W/24W/35W |
| Weight: | 2.4Kg(Junction box),2.6Kg(Stanchion junction box) |
| Size: | φ 136*210mm(Junction box) φ 136*194mm(Stanchion junction box) |
| Ambient Temperature: | -40°C~+55°C |
| Cable Entries: | Junction box:1XM25*1.5 (NPT3/4" is optional) Stanchion junction box:2XM20*1.5 (M25*1.5, NPT3/4" are optional) |
| IP Code: | IP66 |

LED Explosion Proof Light-Polar Bear Series



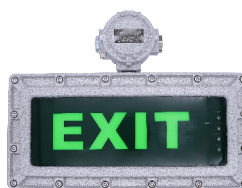
| | |
|----------------------|---|
| Executive Standard: | UL844;UL1598A;UL1598;UL8750 |
| Certificate: | UL Certification NO.:20170823- E491372 20170823- E491374 |
| Division: | Class I Division 2,Group A, B ,C ,D |
| Operating Voltage: | 100-277 VAC 141-392 VDC |
| Power: | 80W/120W/150W/200W/240W |
| Weight: | 7.3Kg(80W)/11Kg(120W,150W)/18.4Kg(200W,240W) |
| Size: | 210*400*161mm(80W)/260*400*161mm(120W,150W) 500*400*161mm(200W,240W) |
| Ambient Temperature: | -40°C~+50°C |
| Cable Entries: | 1XNPT 3/4" (M20*1.5, M25*1.5 are optional) |
| IP Code: | IP66 |

LED Explosion Proof Light-Swordfish Series



| | |
|----------------------|---|
| Executive Standard: | UL844;UL1598A;UL1598;UL8750 |
| Certificate: | UL Certification NO.:20170823- E491372 20170823- E491374 |
| Division: | Class I Division 2,Group A, B ,C ,D Class II Division 2,Group F, G |
| Operating Voltage: | 100-277 VAC 141-392 VDC |
| Power: | 36W/48W/56W(0.6m) 36W/48W/56W/72W/100W(1.2m) |
| Weight: | 6.9Kg(0.6m)/11.5Kg(1.2m) |
| Size: | 600*136*124mm(36W/48W/56W) 1200*136*124mm(36W/48W/56W/72W/100W) |
| Ambient Temperature: | -40°C~+45°C/-40°C~+50°C |
| Cable Entries: | 2XNPT 3/4" (M20*1.5, M25*1.5 are optional) |
| IP Code: | IP66 |

LED Explosion Proof Emergency EXIT Light-KBDJ 11 Series



| | |
|-------------------------|--|
| Ex Mark: | Gas: II 2 G Ex db IIB T6 Gb Dust: II 2 G Ex db eb IIB +H2 T6 Gb II 2 D Ex tb IIIC T80°C Db |
| Certificate: | ATEX Certificate No.:SEV 22 ATEX 0608 X IECEx Certificate No.:IECEx SEV 22.0013X |
| Classification: | Group II, Zone 1 & 21 and 2 & 22 |
| Rated voltage: | 100~277V AC |
| Emergency unit voltage: | DC3.0~3.5V |
| Emergency working time: | ≤3h |
| Weight: | Wall type (B): 7kg, Ceiling type (X1): 6.6kg, Ceiling type (X2): 6.8kg, Pendant type (G): 6.6kg |
| Size: | 412*198*105mm |
| Ambient Temperature: | -20°C~+55°C |
| Cable Entries: | M20*1.5 (M25*1.5, NPT1/2" , NPT 3/4" are optional) |
| IP Code: | IP66 |

LED Explosion Proof Emergency EXIT Light-Polaris Series



| | |
|-----------------------------------|---|
| Ex Mark: | Gas: II 2 G Ex mb ib op is IIC T6 Gb Dust: II 2 D Ex tb op is IIIC T95°C or T80°C Db |
| Classification: | Group II , Zone 1 & 21 and 2 & 22 |
| Operating Voltage: | 100-277 VAC 141-392 VDC |
| Power: | Normal:6W Emergency:0.5W |
| Weight: | 3.1Kg(Junction Box)/2.0Kg(Normal) |
| Size: | 337*310*76mm(Junction Box) 379*199*44mm(Normal) |
| Ambient Temperature: | -20°C~+55°C |
| Cable Entries: | Junction Box:M20*1.5 (M25*1.5, NPT3/4" are optional) Normal:1XM25*1.5 |
| IP Code: | IP54 |
| Light Duration(Emergency): | 3h |

LED Explosion Proof Emergency light-Mickey Mouse Series



| | |
|-----------------------------------|--|
| Ex Mark: | Gas: II 2 G Ex db op is IIC T5 or T6 Gb Dust: II 2 D Ex tb IIIC T95°C or T80°C Db |
| Classification: | Group II , Zone 1 & 21 and 2 & 22 |
| Operating Voltage: | 100-277 VAC 141-392 VDC |
| Power: | 3W |
| Weight: | 2.3Kg |
| Size: | 223*95*233mm |
| Ambient Temperature: | -20°C~+40°C |
| Cable Entries: | M20*1.5 (M25*1.5, NPT3/4" are optional) |
| IP Code: | IP66 |
| Light Duration(Emergency): | > 2h |

LED Explosion Proof Light-SeaLion Series



| | |
|-----------------------------|---|
| Ex Mark: | Gas: II 2 G Ex db IIC T4/T5 Gb Dust: II 2 D Ex tb IIIC T115°C/T105°C/T95°C Db IP66 |
| Certificate: | ATEX Certification NO.: TÜV 20 ATEX 8608 X IECEX Certification NO.: IECEX TUR 20.0086X |
| Operating Voltage: | 100-277 VAC 141-392 VDC |
| Power: | 100W,120W,150W,200W,240W,300W |
| Weight: | 17.2Kg(100-150W) 20.5Kg(200-300W) |
| Size: | 470*460*513mm |
| Ambient Temperature: | -40°C~+55°C |
| Cable Entries: | 2XM20*1.5 (M25*1.5,NPT 3/4" are optional) |
| IP Code: | IP66 |

LED Explosion Proof Portable Light-Forest Frog Series



| | |
|-----------------------------------|---|
| Ex Mark: | Gas: II 2 G Ex db IIC T6...T4 Gb Dust: II 2 D Ex tb IIIC T80°C...T130°C Db |
| Certificate: | ATEX Certificate No.:EPT 18 ATEX 2977 X IECEX Certificate No.:IECEX CQM 15.0039X |
| Classification: | Group II , Zone 1 & 21 and 2 & 22 |
| Operating Voltage: | 100-277 VAC,141-392 VDC |
| Power: | 10W/15W |
| Weight: | 6.5Kg(Magnetic) 5.2Kg(Bracket) |
| Size: | 209*198*293mm(Magnetic) 209*236*303mm(Bracket) |
| Ambient Temperature: | -20°C~+55°C |
| IP Code: | IP66 |
| Light Duration(Emergency): | > 10h(10W) > 6h(15W) |

LED Explosion Proof Mobile Light-Saturn Series



| | |
|-----------------------------|---|
| Ex Mark: | Gas: II 2G Ex de IIC T5 Gb IP54 |
| Certificate: | ATEX Certificate No.:ECM 17 ATEX-B TD45 IECEX Certificate No.:IECEX CQM 16.0005X |
| Classification: | Group II , Zone 1 & 21 and 2 & 22 |
| Operating Voltage: | 100-277 VAC 141-392 VDC |
| Power: | 5W-60W |
| Weight: | 18Kg |
| Size: | 695*350*218mm |
| Ambient Temperature: | -20°C~+55°C |
| IP Code: | IP54 |
| Battery Back Up: | 12 h(15W) 8 h(30W) 4 h(60W) |



LED Explosion Proof Portable Light-Alcidae Series



| | |
|-----------------------------|---|
| Ex Mark: | Gas: II 2 G Ex ib IIC T4 Gb Dust: II 2 D Ex ib IIIC T130°C Db IP68 |
| Certificate: | ATEX Certificate No.:TÜV 15 ATEX 7713 X |
| Classification: | Group II , Zone 1 & 21 and 2 & 22 |
| Operating Voltage: | 100-240VAC 141-339 VDC |
| Power: | 2.52W |
| Weight: | 0.19Kg |
| Size: | φ 35*156mm |
| Ambient Temperature: | -20°C~+55°C |
| IP Code: | IP68(3m) |
| Light Duration | > 9h(High output) > 18h(Normal ouput) |



LED Explosion Proof Portable Light -Hill Myna Series



| | |
|-----------------------------|---|
| Ex Mark: | Gas:  II 2 G Ex mb ib op is IIC T6 Gb Dust:  II 2 D Ex tb op is IIIC T80°C Db IP66 |
| Classification: | Group II , Zone 1 & 21 and 2 & 22 |
| Operating Voltage: | 100-240 VAC 141-339 VDC |
| Power: | 3W/6W |
| Weight: | 1Kg |
| Size: | 190*105*134mm |
| Ambient Temperature: | -20°C~+40°C |
| IP Code: | IP66 |
| Light Duration | > 8h(High output) > 16h(Normal output) |


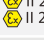
LED Explosion Worklight-Saturn Series



| | |
|-----------------------------|---|
| Ex Mark: | Gas:  II 2 G Ex db op is IIC T5 or T6 Gb Dust:  II 2 D Ex tb op is IIIC T95°C or T80°C Db IP66 |
| Classification: | Group II , Zone 1 & 21 and 2 & 22 |
| Operating Voltage: | 100-277 VAC 141-392 VDC/24 VDC |
| Power: | 12W/24W/35W |
| Weight: | 3.2Kg |
| Size: | 413*203*136mm |
| Ambient Temperature: | -40°C~+55°C |
| Cable Entries: | 1XNPT 3/4" (M20*1.5, M25*1.5 are optional) |
| IP Code: | IP66 |

LED Explosion Proof Mobile Light-Golden Frog Series



| | |
|-----------------------------|---|
| Ex Mark: | Gas:  II 2 G Ex d IIB T5 or T6 Gb Dust:  II 2 D Ex t IIIC T95°C or T80°C Db IP66 |
| Certificate: | ATEX Certificate No.:LCIE 12 ATEX 3070 X IECEX Certificate No.: IECEX CQM 12.0033X |
| Classification: | Group II , Zone 1 & 21 and 2 & 22 |
| Operating Voltage: | 24-48 VAC/100-240 VAC 10-30 VDC/24-48 VDC/141-339 VDC |
| Power: | 30W/60W |
| Weight: | 13Kg |
| Size: | 311*284*190mm |
| Ambient Temperature: | -40°C~+55°C |
| Cable Entries: | 2XM20*1.5 (M25*1.5,NPT 3/4" are optional) |
| IP Code: | IP66 |
| Tripod Altitude: | Min:1155mm,Max:1925mm |
| Tripod Weight: | 5.5Kg(S)/6.5Kg(L) |

Explosion proof Electrical Apparatus-KBH02-S Series



| | |
|--------------------------|---|
| Protection code: | II 2 G Ex eb IIC T6/T5/T4 Gb II 1 G Ex ia IIC T6 Ga II 2 G Ex ia IIC T6 Gb II 2 D Ex tb IIIC T80/T95/T130°C Db |
| Certificate: | ATEX: EPT 22 ATEX 4939 / EPT 22 ATEX 4938X IECEX: IECEX EUT 22,0002 / IECEX EUT 22,0003 |
| Application area: | Zone 0 Zone 1 and Zone 2, Zone 21 and Zone 22 |
| Rated voltage: | Max. AC/DC36V(Ex i, Ex tb) Max. 690V AC, 220V DC(Ex e,Ex tb) |
| Rated current: | 5A(Ex i, Ex tb) 10A,16A,25A,40A,50A,100A,142A(Ex e,Ex tb) |
| Material: | Stainless steel |
| IP Code: | IP66 |
| Temperature: | -40°C~+45/55/60°C(Ex i, Ex tb) -40°C~+45/65°C(Ex e,Ex tb) |

Explosion proof Terminal Box-KBH03 Series



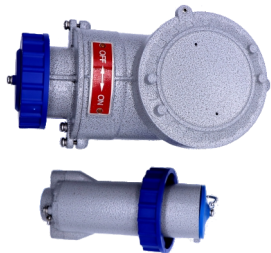
| | |
|--------------------------|---|
| Protection code: | II 2 G Ex eb IIC T6/T5 Gb II 1 G Ex ia IIC T6 Ga II 2 G Ex ib IIC T6 Gb II 2 D Ex tb IIIC T80/T95°C Db |
| Certificate: | ATEX: SEV 22 ATEX 0630 X IECEX: IECEX SEV 22.0012X |
| Application area: | Zone 0 Zone 1 and Zone 2, Zone 21 and Zone 22 |
| Rated voltage: | Max. AC/DC36V(Ex i, Ex tb) Max. 690V AC, 220V DC(Ex e,Ex tb) |
| Rated current: | 5A(Ex i, Ex tb) 10A,16A,25A,40A,50A,100A,142A(Ex e,Ex tb) |
| Material: | GRP (Polyester resin, glass fibre reinforced) anti-static |
| IP Code: | IP66 |
| Temperature: | -40°C~+45/65°C(Ex i, Ex tb) -40°C~+45/55/60°C(Ex e,Ex tb) |

Explosion proof Terminal Box-KBH05 Series



| | |
|--------------------------|---|
| Protection code: | II 2 G Ex eb IIC T6/T5 Gb II 1 G Ex ia IIC T6 Ga II 2 G Ex ib IIC T6 Gb II 2 D Ex tb IIIC T80°C Db |
| Certificate: | ATEX: SEV 22 ATEX 0630 X IECEX: IECEX SEV 22.0012X |
| Application area: | Zone 0 Zone 1 and Zone 2, Zone 21 and Zone 22 |
| Rated voltage: | Max. 500V AC, 220V DC(Ex e,Ex tb) Max. AC/DC36V(Ex i, Ex tb) |
| Rated current: | 5A(Ex i, Ex tb) 10A,12A,20A(Ex e,Ex tb) |
| Material: | Nylon(PA66) |
| IP Code: | IP66 |
| Temperature: | -40°C~+45/55/60°C(Ex e, Ex tb) -40°C~+45/65°C(Ex i,Ex tb) |
| Cable entries: | M20X1.5, M25X1.5, M32X1.5 |

Explosion proof Plug and Sockets-KBSP01 Series



| | |
|--------------------------|--|
| Protection code : | II 2 G Ex db IIC T6 Gb II 2 D Ex tb IIIC T80°C Db |
| Certificate: | ATEX: CSANe 22ATEX1008 X IECEX: IECEX CSAE 22.0005X |
| Application area: | Zone 1 and Zone 2, Zone 21 and Zone 22 |
| Rated voltage: | 24,36V DC(10, 16A) 20~50V AC,100~130V AC, 200~250V AC, 380~415V AC, 480~500V AC, 600~690V AC |
| Rated current : | 10A, 16A, 25A, 32A, 50A, 63A,100A, 125A |
| Material: | Aluminum alloy enclosure |
| Poles: | 2P, 3P(2P+PE), 4P(3P+PE), 5P(3P+N+PE) |
| IP Code: | IP66 |
| Temperature: | 10, 16, 25, 32, 50, 63A: -60°C~+45°C, -60°C~+65°C(Please specify when ordering) 100, 125A: -60°C~+50°C |
| Wire diameter: | 2.5~35mm ² |

Explosion proof Control Station-KBX02 Series



| | |
|--------------------------|---|
| Protection code : | II 2 G Ex db eb IIC T6 Gb II 2 D Ex tb IIIC T80°C Db |
| Certificate: | ATEX: SEV 22 ATEX 0606 X IECEX: IECEX SEV 22.0011X |
| Application area: | Zone 1 and Zone 2, Zone 21 and Zone 22 |
| Rated voltage: | Max. 415V AC, 250V DC |
| Rated current : | 6A, 10A, 16A |
| Material: | Stainless steel, anti-drop structure. |
| IP Code: | IP66 |
| Temperature: | -40°C~+45/45/50/55/60/65/70°C |
| Cable entries: | M16×1.5~M63×1.5 |

Explosion proof Control Station-KBX03 Series



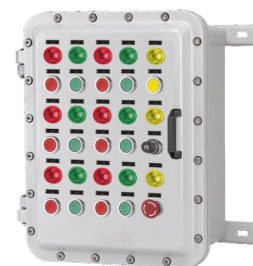
| | |
|--------------------------|--|
| Protection code : | II 2 G Ex db eb IIC T6 Gb II 2 D Ex tb IIIC T80°C Db |
| Certificate: | ATEX: SEV 22 ATEX 0606 X IECEX: IECEX SEV 22.0011X |
| Application area: | Zone 1 and Zone 2 Zone 21 and Zone 22 |
| Rated voltage: | Max. 415V AC, 250V DC |
| Rated current : | 6A, 10A, 16A |
| Material: | GRP (Polyester resin, glass fibre reinforced),antistatic |
| IP Code: | IP66 |
| Temperature: | -40°C~+40/45/50/55/60/65/70°C |
| Cable entries: | M16×1.5~M63×1.5 |

Explosion proof Electrical Apparatus-KDP06 Series



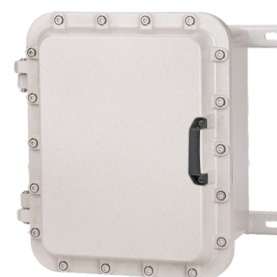
| | |
|--------------------------|--|
| Protection code : | II 2 G Ex db IIB T6/T5/T4 Gb II 2 G Ex db IIB+H2 T6/T5/T4 Gb II 2 D Ex tb IIIC T80/T95/T130°C Db |
| Certificate: | ATEX: TPS 22 ATEX 114950 0003 X IECEX: IECEX TPS 22.0025X |
| Application area: | Zone 1 and Zone 2, Zone 21 and Zone 22 |
| Rated voltage: | Maximum 690V AC |
| Rated current : | Maximum 200A |
| Material: | Aluminum alloy enclosure, powder coated |
| IP Code: | IP66 |
| Temperature: | -20°C~+40/60°C -40°C~+40/60°C |
| Cable entries: | M16×1.5~M63×1.5(default, exact size according to requirement) NPT thread (optional) |

Explosion proof Electrical Apparatus(Control circuit)-KDP07 Series



| | |
|--------------------------|--|
| Protection code : | II 2 G Ex db IIB T6 Gb II 2 G Ex db[ia/ib] IIB T6 Gb II 2 G Ex db IIB+H2 T6 Gb II 2 G Ex db[ia/ib] IIB+H2 T6 Gb II 2 D Ex tb IIIC T80°C Db |
| Certificate: | ATEX: TPS 22 ATEX 114950 0003 X IECEX: IECEX TPS 22.0025X |
| Application area: | Zone 1 and Zone 2, Zone 21 and Zone 22 |
| Rated voltage: | Maximum 415V AC |
| Rated current : | Maximum 200A |
| Material: | Aluminum alloy enclosure, powder coated |
| IP Code: | IP66 |
| Temperature: | -20°C~+60°C -40°C~+60°C |
| Cable entries: | M16×1.5~M63×1.5(default, exact size according to requirement) NPT thread (optional) |

Explosion proof Electrical Apparatus (Terminal Box)-KDP11 Series



| | |
|--------------------------|--|
| Protection code : | II 2 G Ex db IIB T6/T5/T4 Gb II 2 G Ex db IIB+H2 T6/T5/T4 Gb II 2 D Ex tb IIIC T80/T95/T130°C Db |
| Certificate: | ATEX: TPS 22 ATEX 114950 0003 X IECEX: IECEX TPS 22.0025X |
| Application area: | Zone 1 and Zone 2, Zone 21 and Zone 22 |
| Rated voltage: | Maximum 1000V AC, 1500V DC |
| Rated current : | Maximum 1200A |
| Material: | Aluminum alloy enclosure, powder coated |
| IP Code: | IP66 |
| Temperature: | -20°C~+40/60°C -40°C~+40/60°C |
| Cable entries: | M16×1.5~M63×1.5(default, exact size according to requirement) NPT thread (optional) |

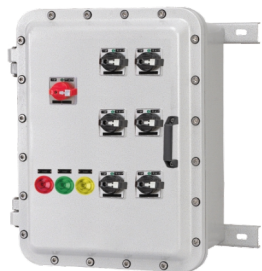
KHJ-Explosion proof Electrical Apparatus

Explosion proof Control Station-KBX05 Series



| | |
|--------------------------|---|
| Protection code: | II 2 G Ex db eb IIC T6 Gb II 2 D Ex tb IIIC T80°C Db |
| Certificate: | ATEX: SEV 22 ATEX 0606 X IECEX: IECEX SEV 22.0011X |
| Application area: | Zone 1 and Zone 2 Zone 21 and Zone 22 |
| Rated voltage: | Max. 415V AC, 250V DC |
| Rated current: | 6A, 10A, 16A |
| Material: | GRP (Polyester resin, glass fibre reinforced), antistatic |
| IP Code: | IP66 |
| Temperature: | -40°C~+40/45/50/55/60/65/70°C |
| Cable entries: | φ 25.5mm The cable gland is not available when delivery, please indicate if necessary. |

Explosion proof Electrical Apparatus -KDP03 Series



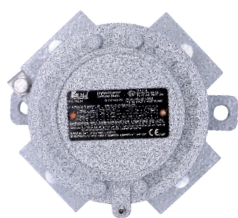
| | |
|--------------------------|---|
| Protection code: | II 2 G Ex db IIB T6/T5/T4 Gb II 2 G Ex db[ia/ib] IIB T6/T5/T4 Gb II 2 G Ex db IIB+H2 T6/T5/T4 Gb II 2 G Ex db[ia/ib] IIB+H2 T6/T5/T4 Gb II 2 D Ex tb IIIC T80/T95/T130°C Db |
| Certificate: | ATEX: TPS 22 ATEX 114950 0003 X IECEX: IECEX TPS 22.0025X |
| Application area: | Zone 1 and Zone 2 Zone 21 and Zone 22 |
| Rated voltage: | Maximum 1000V AC, 1500V DC |
| Rated current: | Maximum 1200A |
| Material: | Aluminum alloy enclosure, powder coated |
| IP Code: | IP66 |
| Temperature: | -20°C~+40/60°C -40°C~+40/60°C |
| Cable entries: | M16×1.5~M63×1.5(default, exact size according to requirement) NPT thread (optional) |

Explosion proof Electrical Apparatus(Circuit Breaker)-KDP05 Series



| | |
|--------------------------|--|
| Protection code: | II 2 G Ex db IIB T6/T5/T4 Gb II 2 G Ex db IIB+H2 T6/T5/T4 Gb II 2 D Ex tb IIIC T80/T95/T130°C Db |
| Certificate: | ATEX: TPS 22 ATEX 114950 0003 X IECEX: IECEX TPS 22.0025X |
| Application area: | Zone 1 and Zone 2 Zone 21 and Zone 22 |
| Rated voltage: | Maximum 1000V AC, 1500V DC |
| Rated current: | Maximum 630A |
| Material: | Aluminum alloy enclosure, powder coated |
| IP Code: | IP66 |
| Temperature: | -20°C~+40/60°C -40°C~+40/60°C |
| Cable entries: | M16×1.5~M63×1.5(default, exact size according to requirement) NPT thread (optional) |

Explosion proof Junction Box-KBH31/32 Series



| | |
|--------------------------|--|
| Protection code: | II 2 G Ex db IIC T6 Gb II 1 G Ex ia IIC T6 Ga II 2 G Ex ib IIC T6 Gb II 2 D Ex tb IIIC T80°C Db |
| Certificate: | ATEX: TPS 22 ATEX 114950 0002 X IECEX: IECEX TPS 22.0024X |
| Application area: | Zone 1 and Zone 2 Zone 21 and Zone 22 |
| Rated voltage: | 36VAC/DC, 220V DC, 400V AC, 500V AC |
| Rated current: | 5A, 16A, 20A |
| Material: | Aluminum alloy enclosure, powder coated |
| IP Code: | IP66 |
| Temperature: | -60°C~+55°C |
| Cable entries: | Standard M20X1.5~M32X1.5 Optional NPT1/2~NPT1 |

KHJ-Explosion proof Cable Gland

Explosion proof Cable Glands(Single Seal, Unarmoured)- KBM-01,02 Series



KBM-01



KBM-02

| | |
|--------------------------|---|
| Protection code: | II 2 G Ex eb IIC Gb/II 3 G Ex nR IIC Gc II 2 D Ex tb IIIC Db |
| Certificate: | ATEX: TPS 22 ATEX 114950 0001 X IECEX: IECEX TPS 22.0023X |
| Application area: | Zone 1 and Zone 2 Zone 21 and Zone 22 |
| Material: | Stainless steel, nickel plated brass, brass, etc. |
| Protection class: | IP66 |
| Temperature: | -43°C~+100°C |
| Cable entries: | M16~M63 NPT1/2~NPT2 |

Explosion proof Cable Glands (Single Seal, Unarmoured)- KBM - 07,08 Series



KBM-07



KBM-08

| | |
|--------------------------|---|
| Protection code: | II 2 G Ex db IIC Gb/II 2 G Ex eb IIC Gb II 3 G Ex nR IIC Gc/II 2 D Ex tb IIIC Db |
| Certificate: | ATEX: TPS 22 ATEX 114950 0001 X IECEX: IECEX TPS 22.0023X |
| Application area: | Zone 1 and Zone 2 Zone 21 and Zone 22 |
| Material: | Stainless steel, nickel plated brass, brass, etc. |
| Protection class: | IP66, IP67, IP68(2m/72h) |
| Temperature: | -43°C~+100°C -60°C~+120°C(f type) |
| Cable entries: | M16~M63 NPT1/2~NPT2 |

Explosion proof Cable Glands(Double Seal, Unarmoured)- KBM-09,10 Series



KBM-09



KBM-10

| | |
|--------------------------|---|
| Protection code: | II 2 G Ex db IIC Gb/II 2 G Ex eb IIC Gb II 3 G Ex nR IIC Gc/II 2 D Ex tb IIIC Db |
| Certificate: | ATEX: TPS 22 ATEX 114950 0001 X IECEX: IECEX TPS 22.0023X |
| Application area: | Zone 1 and Zone 2 Zone 21 and Zone 22 |
| Material: | Stainless steel, nickel plated brass, brass, etc. |
| Protection class: | IP66, IP67, IP68(2m/72h) |
| Temperature: | -43°C~+120°C |
| Cable entries: | M16~M63 NPT1/2~NPT2 |

Explosion proof Cable Glands(Double Seal, Unarmoured)- KBM-13,14 Series



KBM-13



KBM-14

| | |
|--------------------------|---|
| Protection code: | II 2 G Ex db IIC Gb/II 2 G Ex eb IIC Gb II 3 G Ex nR IIC Gc/II 2 D Ex tb IIIC Db |
| Certificate: | ATEX: TPS 22 ATEX 114950 0001 X IECEX: IECEX TPS 22.0023X |
| Application area: | Zone 1 and Zone 2 Zone 21 and Zone 22 |
| Material: | Stainless steel, nickel plated brass, brass, etc. |
| Protection class: | IP66, IP67, IP68(2m/72h) |
| Temperature: | -43°C~+100°C |
| Cable entries: | M16~M63 NPT1/2~NPT2 |

Explosion proof Cable Glands(Compound Barrier,Unarmoured)- KBM-15,16 Series



KBM-15



KBM-16

| | |
|-------------------|---|
| Protection code : | II 2 G Ex db IIC Gb/II 2 G Ex eb IIC Gb II 3 G Ex nR IIC Gc/II 2 D Ex tb IIIC Db |
| Certificate: | ATEX: TPS 22 ATEX 114950 0001 X IECEX: IECEX TPS 22.0023X |
| Application area: | Zone 1 and Zone 2, Zone 21 and Zone 22 |
| Material: | Stainless steel, nickel plated brass, brass, etc. |
| Protection class: | IP66,IP67, IP68(2m/72h) |
| Temperature: | -43°C~+100°C |
| Cable entries: | M16~M63 NPT1/2~NPT2 |

Explosion proof Cable Glands(Compound Barrier,Unarmoured)- KBM-17,18 Series



KBM-17



KBM-18

| | |
|-------------------|---|
| Protection code : | II 2 G Ex db IIC Gb/II 2 G Ex eb IIC Gb II 3 G Ex nR IIC Gc/II 2 D Ex tb IIIC Db |
| Certificate: | ATEX: TPS 22 ATEX 114950 0001 X IECEX: IECEX TPS 22.0023X |
| Application area: | Zone 1 and Zone 2, Zone 21 and Zone 22 |
| Material: | Stainless steel, nickel plated brass, brass, etc. |
| Protection class: | IP66 |
| Temperature: | -43°C~+100°C/-60°C~+100°C (Please specify when ordering) |
| Cable entries: | M16~M63 NPT1/2~NPT2 |

Explosion proof Unarmoured cable glands- KUG Series



| | |
|-------------------|---|
| Protection code : | I M2 Ex db I Mb / I M2 Ex eb I Mb II 2G Ex db IIC Gb / II 2G Ex eb IIC Gb II 2D Ex tb IIIC Db |
| Certificate: | ATEX: IEP 20 ATEX 0755 X |
| Application area: | Zone 1 and Zone 2, Zone 21 and Zone 22 Gas Group IIA, IIB, IIC |
| Material: | Ms58 Brass with nickel plated Stainless steel AISI316L / Aluminium |
| Protection class: | IP66 |
| Temperature: | -60°C~+180°C |
| Cable entries: | M16~M75 NPT1/2~NPT3 |

Explosion proof Armoured Cable Glands- KDCG Series



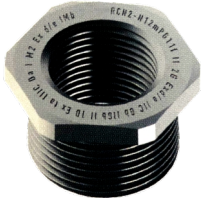
| | |
|-------------------|---|
| Protection code : | I M2 Ex db I Mb II 2G Ex db IIC Gb II 2D Ex tb IIIC Db |
| Certificate: | ATEX: IEP 20 ATEX 0754 X |
| Application area: | Zone 1 and Zone 2, Zone 21 and Zone 22 Gas Group IIA, IIB, IIC |
| Material: | Ms58 Brass with nickel plated Stainless steel AISI316L / Aluminium |
| Protection class: | IP66 |
| Temperature: | -60°C~+180°C |
| Cable entries: | M16~M130 NPT1/2~NPT3 |

Explosion proof Stopper Plug- KTK Series



| | |
|-------------------|---|
| Protection code : | I M2 Ex db I Mb / I M2 Ex eb I Mb II 2G Ex db IIC Gb / II 2G Ex eb IIC Gb II 1D Ex ta IIIC Da |
| Certificate: | ATEX: IEP 20 ATEX 756 U |
| Application area: | Zone 1 and Zone 2, Zone 21 and Zone 22 Gas Group IIA, IIB, IIC |
| Material: | Ms58 Brass with nickel plated Stainless steel AISI316L / Aluminium |
| Protection class: | IP66 |
| Temperature: | -40°C~+100°C |
| O-ring: | Silicone |

Explosion proof Reducer- KRC Series



| | |
|-------------------|---|
| Protection code : | I M2 Ex db I Mb / I M2 Ex eb I Mb II 2G Ex db IIC Gb / II 2G Ex eb IIC Gb II 1D Ex ta IIIC Da |
| Certificate: | ATEX: IEP 20 ATEX 756 U |
| Application area: | Zone 1 and Zone 2, Zone 21 and Zone 22 Gas Group IIA, IIB, IIC |
| Material: | Ms58 Brass with nickel plated Stainless steel AISI316L / Aluminium |
| Protection class: | IP66 |
| Temperature: | -40°C~+100°C |
| O-ring: | Silicone |

LED Industrial Light- Forest Frog Series

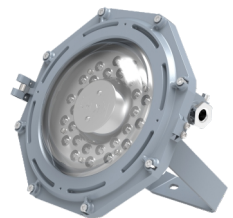
CE,RoHS



| | |
|----------------------|--|
| Executive Standard: | EN 55015, EN 61547, EN 61000-3-2, EN 61000-3-3 EN 60598-1, EN 60598-2-5, EN 62031, EN 62493 IEC 62321-4, IEC 62321-5, IEC 62321-6 IEC 62321-7-1, IEC 62321-7-2, IEC 62321-8 |
| Certificate: | CE,RoHS |
| Operating Voltage: | 24-48 VAC/100-277 VAC 10-30 VDC/24-48 VDC/141-392 VDC |
| Power: | 30W/45W/60W |
| Weight: | 3.3Kg |
| Size: | φ 220*191mm |
| Ambient Temperature: | -40°C~+55°C |
| Cable Entries: | 1XM25*1.5 (NPT 3/4" is optional) |
| IP Code: | IP66 |

LED Industrial Light-Golden Frog Series

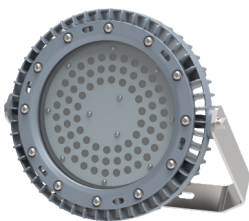
CE,RoHS



| | |
|----------------------|--|
| Executive Standard: | EN 55015, EN 61547, EN 61000-3-2, EN 61000-3-3 EN 60598-1, EN 60598-2-5, EN 62031, EN 62493 IEC 62321-4, IEC 62321-5, IEC 62321-6 IEC 62321-7-1, IEC 62321-7-2, IEC 62321-8 |
| Certificate: | CE,RoHS |
| Operating Voltage: | 24-48 VAC/100-277 VAC 10-30 VDC/24-48 VDC/141-392 VDC |
| Power: | 30W/60W |
| Weight: | 5.5Kg |
| Size: | 311*284*190mm |
| Ambient Temperature: | -40°C~+55°C |
| Cable Entries: | 2XM25*1.5 (M20*1.5,NPT 3/4" are optional) |
| IP Code: | IP66 |

LED Industrial Light-SeaLion Series

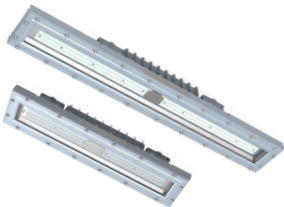
CE,RoHS



| | |
|----------------------------|---|
| Executive Standard: | EN 60598-1:2015+A1:2018,EN 60598-2-5:2015 EN 62031:2008+A1:2013+A2:2015,EN 62471:2008 EN 62493:2015,IEC 62321-4:2017,IEC 62321-5:2013 IEC 62321-6:2015,IEC 62321-7-1:2015,IEC 62321-7-2:2017 IEC 62321-8:2017 |
| Certificate: | CE,RoHS |
| Operating Voltage: | Normal:20-30 VAC/100-277 VAC/347-480 VAC 20-30 VDC/28-42 VDC/141-392 VDC/491-679 VDC Emergency:220-240VAC/311-339VDC |
| Power: | Normal:30W/45W/60W/80W/100W/120W/150W/ 200W/240W/300W Emergency:10W |
| Weight: | Normal:8.5Kg(30-80W)/11Kg(100-150W)/14Kg(200-300W) Emergency:9.5Kg(30-80W)/12Kg(100-150W)/15Kg(200-240W) |
| Size: | φ 275*195mm(30-80W)/ φ 330*197mm(100-150W) φ 415*197mm(200-300W) |
| Ambient Temperature: | Normal:-40°C~+55°C/Emergency:-20°C~+55°C |
| Cable Entries: | Normal:not available Emergency:2XM25*1.5 (M20*1.5,NPT 3/4" are optional) |
| IP Code: | IP66 |
| Light Duration(Emergency): | 3h |

LED Industrial Light-Swordfish Series

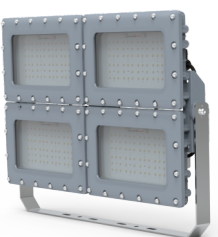
CE,RoHS



| | |
|----------------------------|--|
| Executive Standard: | EN 55015, EN 61547, EN 61000-3-2, EN 61000-3-3 EN 60598-1, EN 60598-2-5, EN 62031, EN 62493 IEC 62321-4, IEC 62321-5, IEC 62321-6 IEC 62321-7-1, IEC 62321-7-2, IEC 62321-8 |
| Certificate: | CE,RoHS |
| Operating Voltage: | Normal:100-277 VAC/24-48 VAC 10-30 VDC/24-48 VDC/141-392 VDC Emergency:220-240 VAC/311-339 VDC |
| Power: | Normal:18W/36W/48W(0.6m),36W/48W/56W/72W(0.9m) Emergency:5W |
| Weight: | Normal:6.9Kg(0.6m)/9.2Kg(0.9m) Emergency:7.3Kg(0.6m)/9.6Kg(0.9m) |
| Size: | 600*136*124mm(18W/36W/48W) 900*136*124mm(36W/48W/56W/72W) |
| Ambient Temperature: | -20°C~+55°C |
| Cable Entries: | 2XM25*1.5 (M20*1.5,NPT 3/4" are optional) |
| IP Code: | IP66 |
| Light Duration(Emergency): | 3h |

LED Industrial Light-Tank Series

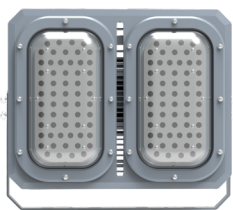
CE,RoHS



| | |
|----------------------|--|
| Executive Standard: | EN 55015, EN 61547, EN 61000-3-2, EN 61000-3-3 EN 60598-1, EN 60598-2-5, EN 62031, EN 62493 IEC 62321-4, IEC 62321-5, IEC 62321-6 IEC 62321-7-1, IEC 62321-7-2, IEC 62321-8 |
| Certificate: | CE,RoHS |
| Operating Voltage: | 100-277 VAC 141-391VDC(347-480 VAC,491-679 VDC are optional) |
| Power: | 80W/100W/120W(Single lamp) 160W/200W/240W(Two lamps) 320W/400W/480W(Four lamps) |
| Weight: | 6.3Kg(80W~120W)/13Kg(160W~240W) 28kg(320W~480W) |
| Size: | 332*212*100mm(80W~120W) 332*426*100mm(160W~240W) 671*426*100mm(320W~480W) |
| Ambient Temperature: | -40°C~+55°C |
| Earthing Protection: | M4 (external earth bolts) |
| IP Code: | IP66 |

LED Industrial Light-Polar Bear Series

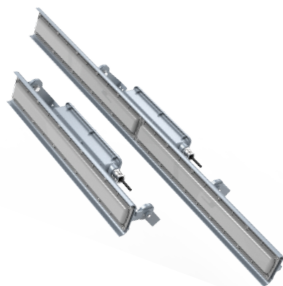
CE,RoHS



| | |
|----------------------|--|
| Executive Standard: | EN 55015, EN 61547, EN 61000-3-2, EN 61000-3-3 EN 60598-1, EN 60598-2-5, EN 62031, EN 62493 IEC 62321-4, IEC 62321-5, IEC 62321-6 IEC 62321-7-1, IEC 62321-7-2, IEC 62321-8 |
| Certificate: | CE,RoHS |
| Operating Voltage: | 100-277 VAC 141-392 VDC |
| Power: | 80W/120W/160W/200W/240W |
| Weight: | 7.3Kg(80W)/11Kg(120W,160W)/18.4Kg(200W,240W) |
| Size: | 210*400*161mm(80W)/260*400*161mm(120W,160W) 500*400*161mm(200W,240W) |
| Ambient Temperature: | -40°C~+55°C |
| Cable Entries: | 2XM25*1.5 (M20*1.5,NPT 3/4" are optional) |
| IP Code: | IP66 |

LED Industrial Light-SeaLion Series

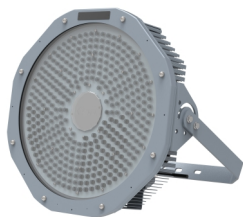
CE,RoHS



| | |
|----------------------------|--|
| Executive Standard: | EN 55015, EN 61547, EN 61000-3-2, EN 61000-3-3 EN 60598-1, EN 60598-2-5, EN 62031, EN 62493, IEC 62321-4, IEC 62321-5, IEC 62321-6, IEC 62321-7-1, IEC 62321-7-2, IEC 62321-8 |
| Certificate: | CE,RoHS |
| Operating Voltage: | Normal:100-277 VAC/141-392 VDC Emergency:220-240VAC/311-339VDC |
| Power: | Normal:18W/36W/48(0.6m),48W/64W(1.2m) Emergency:5W |
| Weight: | Normal:2.7Kg(0.6m)/4.3Kg(1.2m) Emergency:4.2Kg(0.6m)/5.8Kg(1.2m) |
| Size: | Normal:600*110*103mm(18W/36W/48W) 1200*110*103mm(48W/64W) Emergency:600*120*120mm(18W/36W/48W) 1200*120*120mm(48W/64W) |
| Ambient Temperature: | Normal:-40℃~+55℃,-40℃~+65℃/Emergency:-20℃~+55℃ |
| Cable Entries: | Normal:2XM25*1.5 (M20*1.5, NPT 3/4" are optional) Emergency:2XM25*1.5 (M20*1.5 is optional) |
| IP Code: | IP66 |
| Light Duration(Emergency): | 3h |

LED Industrial Light-Sea Anemone Series

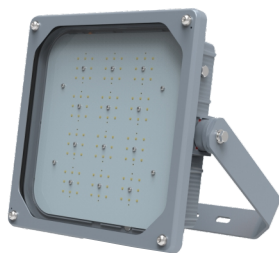
CE,RoHS



| | |
|----------------------|---|
| Executive Standard: | EN 55015:2013+A1:2015,EN 61547:2009 EN 61000-3-2:2014,EN 61000-3-3:2013 EN 60598-1:2015,EN 60598-2-1:1989,IEC 62321-4:2013, IEC 62321-5:2013,IEC 62321-6:2015,IEC 62321-7-1:2015 |
| Certificate: | CE,RoHS |
| Operating Voltage: | 100-277 VAC 141-392 VDC |
| Power: | 360W/480W/720W |
| Weight: | 24Kg(360W/480W);27Kg(720W) |
| Size: | φ 580*210mm |
| Ambient Temperature: | -40℃~+55℃ |
| IP Code: | IP66 |

LED Industrial Light-Brown Bear Series

CE,RoHS



| | |
|----------------------|--|
| Executive Standard: | EN 55015, EN 61547, EN 61000-3-2, EN 61000-3-3 EN 60598-1, EN 60598-2-5, EN 62031, EN 62493 IEC 62321-4, IEC 62321-5, IEC 62321-6 IEC 62321-7-1, IEC 62321-7-2, IEC 62321-8 |
| Certificate: | CE,RoHS |
| Operating Voltage: | 100-277 VAC 141-392 VDC |
| Power: | 80W/100W/120W/150W |
| Weight: | 10.5Kg |
| Size: | 336*336*163mm |
| Ambient Temperature: | -40℃~+55℃ |
| Cable Entries: | 2XM25*1.5 (M20*1.5,NPT 3/4" are optional) |
| IP Code: | IP66 |

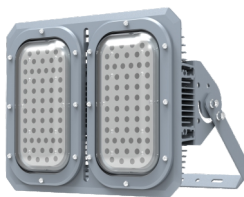
LED Industrial Light-Firefly Series

CE,RoHS



| | |
|----------------------|--|
| Executive Standard: | EN 55015, EN 61547, EN 61000-3-2, EN 61000-3-3 EN 60598-1, EN 60598-2-5, EN 62031, EN 62493 IEC 62321-4, IEC 62321-5, IEC 62321-6 IEC 62321-7-1, IEC 62321-7-2, IEC 62321-8 |
| Certificate: | CE,RoHS |
| Operating Voltage: | 100-277 VAC 141-392 VDC/24 VDC |
| Power: | 12W/24W/35W |
| Weight: | 2.4Kg(Junction box),2.6Kg(Stanchion junction box) |
| Size: | φ 136*210mm(Junction box), φ 136*194mm(Stanchion junction box) |
| Ambient Temperature: | -40℃~+55℃ |
| Cable Entries: | Junction box:1XM25*1.5 (NPT3/4" is optional) Stanchion junction box:2XM25*1.5 (M20*1.5, NPT3/4" are optional) |
| IP Code: | IP66 |

LED Industrial Light- Polar Bear Series



| | |
|----------------------|---|
| Executive Standard: | UL1598A;UL1598;UL8750 |
| Certificate: | UL Certification NO.:20170823- E491373 20170823- E491374 |
| Operating Voltage: | 100-277 VAC 141-392 VDC |
| Power: | 80W/120W/150W/200W/240W |
| Weight: | 7.3Kg(80W)/11Kg(120W,150W)/18.4Kg(200W,240W) |
| Size: | 210*400*161mm(80W)/260*400*161mm(120W,150W) 500*400*161mm(200W,240W) |
| Ambient Temperature: | -40℃~+50℃ |
| Cable Entries: | 1XM25*1.5 (M20*1.5, NPT 3/4" are optional) |
| IP Code: | IP66 |

LED Linear Light-Swordfish Series



| | |
|----------------------|--|
| Executive Standard: | UL1598A;UL1598;UL8750 |
| Certificate: | UL Certification NO.:20170823- E491373 20170823- E491374 |
| Operating Voltage: | 100-277 VAC 141-392 VDC |
| Power: | 36W/48W/56W(0.6m) 36W/48W/56W/72W/100W(1.2m) |
| Weight: | 6.9Kg(0.6m)/11.5Kg(1.2m) |
| Size: | 600*136*124mm(36W/48W/56W) 1200*136*124mm(36W/48W/56W/72W/100W) |
| Ambient Temperature: | -40℃~+45℃/-40℃~+50℃ |
| Cable Entries: | 2XM25*1.5 (M20*1.5, NPT 3/4" are optional) |
| IP Code: | IP66 |

LED Industrial Light-SeaLion Series

CE,RoHS



| | |
|----------------------|--|
| Executive Standard: | EN 55015, EN 61547, EN 61000-3-2, EN 61000-3-3, EN 60598-1, EN 60598-2-5, EN 62031, EN 62493, IEC 62321-4, IEC 62321-5, IEC 62321-6, IEC 62321-7-1, IEC 62321-7-2, IEC 62321-8 |
| Certificate: | CE,RoHS |
| Operating Voltage: | 100-277 VAC 141-392 VDC |
| Power: | 30W 45W/60W 80W/100W 120W |
| Weight: | 8.5Kg(30/45W)/11Kg(60/80W)/14Kg(100/120W) |
| Size: | φ 275*195mm(30/45W) / φ 330*197mm(60/80W) φ 415*197mm(100/120W) |
| Ambient Temperature: | -40°C+80°C/-40°C+90°C |
| Cable Entries: | 2XM25*1.5 (M20*1.5,NPT 3/4" are optional) |
| IP Code: | IP66 |

LED Industrial Light-Tank Series

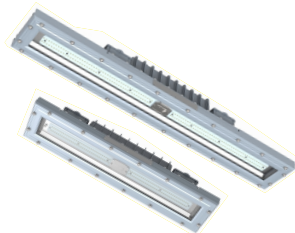
CE,RoHS



| | |
|----------------------|--|
| Executive Standard: | EN 55015, EN 61547, EN 61000-3-2, EN 61000-3-3, EN 60598-1, EN 60598-2-5, EN 62031, EN 62493, IEC 62321-4, IEC 62321-5, IEC 62321-6, IEC 62321-7-1, IEC 62321-7-2, IEC 62321-8 |
| Certificate: | CE,RoHS |
| Operating Voltage: | 100-277 VAC |
| Power: | 80W(Single lamp),160W(Two lamps),240W(Four lamps) |
| Weight: | 9.3Kg(80W)/15Kg(160W)/31kg(240W) |
| Size: | 332*212*142mm(80W)/332*426*142mm(160W) 671*426*142mm(240W) |
| Ambient Temperature: | -40°C+80°C |
| Cable Entries: | 2XM25*1.5 (M20*1.5,NPT 3/4" are optional) |
| IP Code: | IP66 |

LED Industrial Light-Swordfish Series

CE,RoHS



| | |
|----------------------|--|
| Executive Standard: | EN 55015, EN 61547, EN 61000-3-2, EN 61000-3-3, EN 60598-1, EN 60598-2-5, EN 62031, EN 62493, IEC 62321-4, IEC 62321-5, IEC 62321-6, IEC 62321-7-1, IEC 62321-7-2, IEC 62321-8 |
| Certificate: | CE,RoHS |
| Operating Voltage: | 100-277 VAC |
| Power: | 18W/36W(0.6m),36W/48W(0.9m) |
| Weight: | 6.9Kg(0.6m)/9.2Kg(0.9m) |
| Size: | 600*136*124mm(18W/36W) 900*136*124mm(36W/48W) |
| Ambient Temperature: | -20°C+80°C |
| Cable Entries: | 2XM25*1.5 (M20*1.5,NPT 3/4" are optional) |
| IP Code: | IP66 |

LED Industrial Light-Venus Series

CE,RoHS



| | |
|----------------------|---|
| Executive Standard: | EN 60598-2-5:1998, EN 60598-1:2008 +A11:2009 EPA3050B:1996, EN1122B:2001 EN 55015:2006+A1:2007+A2:2009, EN 61547:2009 EN 61000-3-2:2006 +A1:2009+A2:2009 EN 61000-3-3:2008, EPA3052:1996, EPA3060A:1996 EPA7196A:1992, EPA3540C:1996 EPA8270D:2007,IEC 62321:2008 |
| Certificate: | CE,RoHS |
| Operating Voltage: | 100-277 VAC 141-392 VDC |
| Power: | 80W/100W/120W/150W/200W/220W |
| Weight: | 8Kg(80W),9Kg(100W),10Kg(120W),11Kg(150W) 12Kg(200W),13Kg(220W) |
| Size: | 700*320*93mm(80W,100W,120W) 825*360*93mm(150W,200W,220W) |
| lighting pole: | φ 50-63mm |
| Ambient Temperature: | -40°C+55°C |
| Cable Entries: | 3*1.0mm²(L+N+PE);3*1.0-4mm²(L+N+PE) for optional |
| IP Code: | IP66 |

LED Industrial Light-Pike Series

CE,RoHS



| | |
|----------------------------|---|
| Certificate: | CE,RoHS |
| Operating Voltage: | 100-277 VAC |
| Power: | Normal:20W/40W/50W Emergency:18W |
| Weight: | 0.96kg(20W),1.69kg(40W),3.03kg(50W) |
| Size: | 1200*83.4*68.4mm 1500*83.4*68.4mm |
| Ambient Temperature: | Normal:-20°C+40°C Emergency:0°C+40°C |
| IP Code: | IP65 |
| Light Duration(Emergency): | 3h |