



LEADSUN Global Limited

Address: 3/F, No.1 Workshop, No.15, Pingbei 2nd Road,
Nanping, Zhuhai, Guangdong, P.R. China 519060.
Phone: +86-756-2289712 **Email:** sales@leadsunglobal.com



www.leadsunglobal.com

LEADSUN[®]
“Bright Ideas For An Even Brighter Future.”



GRID-FREE SOLAR STREET LIGHTING

AE3C Series | AE5 Series | AE6 Series

PRODUCT CATALOGUE

THIS IS LEADSUN

Established in 2005, LEADSUN is a globally recognised provider and integrator of compact All-In-One solar energy systems, specialising in a wide-range of Off-Grid Intelligent LED Light and Power solutions.

LEADSUN continually strives to provide its customers with the most up-to-date, cost-effective, sustainable and easy to install solar powered lighting products. Our core focus is on technical innovation and quality, providing our business with a future-proofed direction and platform for growth that can bring on real and sustainable change to this world.

Combining renewable energy with next-generation lighting and wireless IoT technology, our mission is to make our solutions as cost-effective, practical and functional as possible. As consumers become more environmentally aware, more conscious of their hip pocket, and begin to steer away from grid connected lighting, our goal is to plug the world into an infinite source of green and free energy, coupled with intelligent and autonomous technology.



Certificate No.: 19820QL2539R05
Unified Social Credit Code / Organization Code: 914404007783341243



1000+
Successful
Installation
Cases



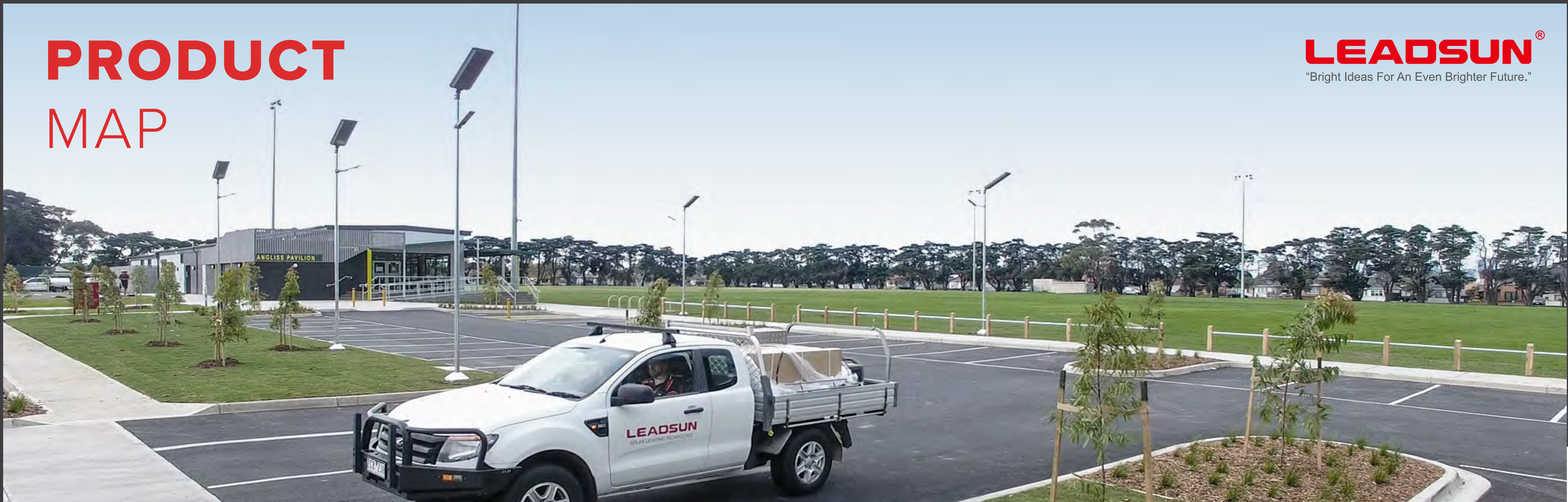
We offer a
'Total Solution'
approach



40+
Patented
Products

PRODUCT MAP

LEADSUN[®]
“Bright Ideas For An Even Brighter Future.”



AE3C Series

LED Output: 10–40W
Battery Capacity: 308–615Wh
Solar Panel: 60–90W

13-14



AE5 Series

LED Output: 40–80W
Battery Capacity: 820–1229Wh
Solar Panel: 150–300W

15-16



AE6 Series

LED Output: 30–80W
Battery Capacity: 820–1229Wh
Solar Panel: 150–300W

17-18

Featured Projects

No one knows our products like we do. The best products deserve the best service. Our Consultation, Sales, Installation and Service support altogether has been recognized around the globe as consistently best-in-class from industry sources.

Leadsun only closes a case when the issue is resolved and delivered to the customer.



Monocrystalline Solar Module

Ultra- Efficient



Generating more energy than conventional modules, due to its superior performance cells, our solar module has higher conversion efficiency, is highly reliable and provides maximum power in a minimum unit area.



High Energy Yield



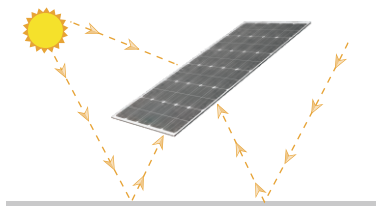
Over **22%**
Conversion Efficiency



25-year Life Span

Double-sided solar panel

- Generate power from the dual sides
- Maximize power in limited space
- Energy generation increase by **8%~15%**



High Tensile Aluminum Structure

Ultra – Strong

LEADSUN solar street lights are built with an all-aluminum anti-corrosive housing and scientific cooling structure. They are IP65 IK08 rated and have been engineered to be extremely durable in harsh environments. The AE5/6 series have even passed the static load test to withstand wind speeds of upto 160 Mph.



Robust, strong and easy to install out of the box



Interchangeable 'plug & play' modules allow for easy replacement



Sleek, compact and modular design



Advanced Battery Management Technology

Ultra- Efficient



At the heart of every Leadsun solar lighting system are the ingenious Lithium LiFePO4 batteries featuring LEADSUN's patented advanced battery management system. They have much greater charging efficiency and also provide double the lifespan compared to traditional solar lighting batteries. The battery cycle life is up to 4000 times at 80% DOD.

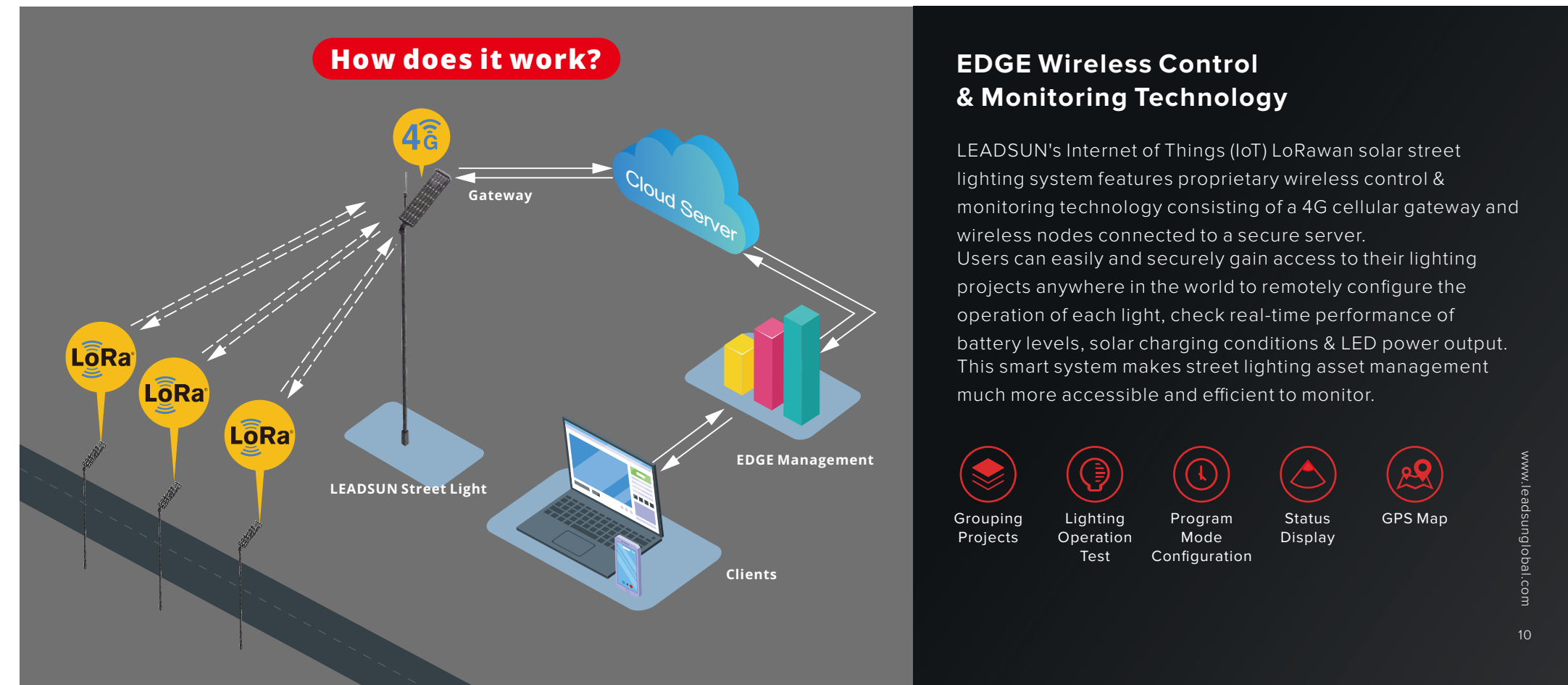
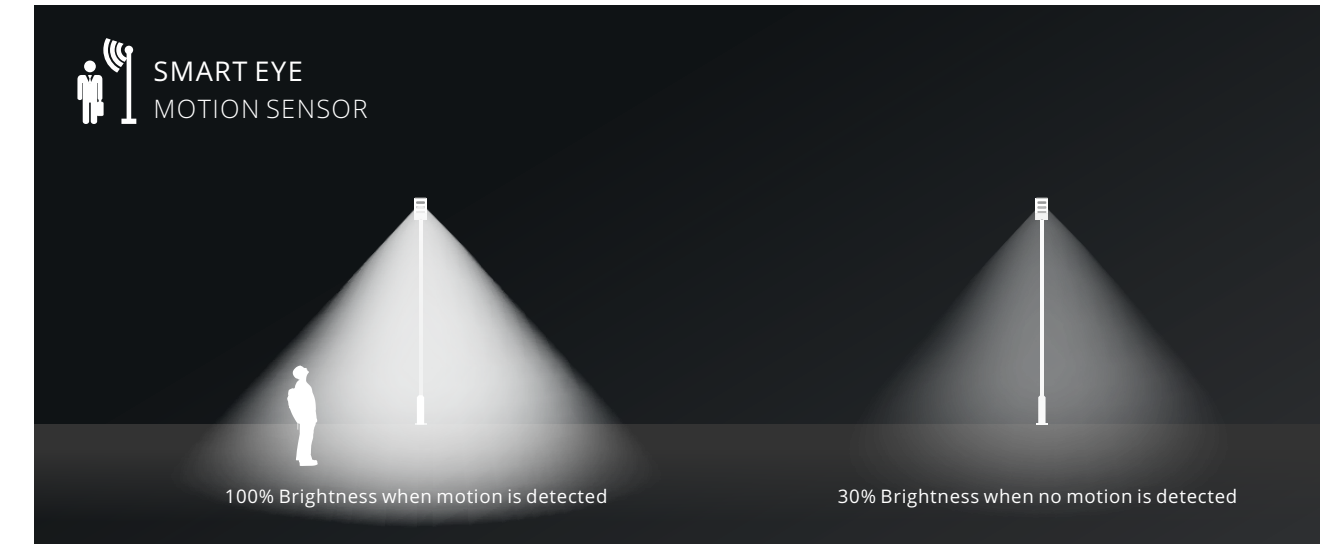
Batteries: Off-Grid Storage



Smart Controller

Ultra-Intelligent

LEADSUN's SMART Controller offers flexible accessibility and comprehensive protections for the whole lighting system against over voltage, over current, over charge, over discharge, over load, short circuit and ESD. It supports output power regulation by PIR motion sensor, which can reduce energy consumption and enhance battery autonomy and operational reliability. It is also capable of two remote control functions, respectively by an IR remote control unit and by LEADSUN Edge software, for better management or monitoring of the lights.



EDGE Wireless Control & Monitoring Technology

LEADSUN's Internet of Things (IoT) LoRawan solar street lighting system features proprietary wireless control & monitoring technology consisting of a 4G cellular gateway and wireless nodes connected to a secure server. Users can easily and securely gain access to their lighting projects anywhere in the world to remotely configure the operation of each light, check real-time performance of battery levels, solar charging conditions & LED power output. This smart system makes street lighting asset management much more accessible and efficient to monitor.

- Grouping Projects
- Lighting Operation Test
- Program Mode Configuration
- Status Display
- GPS Map

Brilliant LED Module

Ultra-Bright

Leadsun adopts premium branded Osram / Philips Cree LED chips with a USA lab-certified luminous efficacy of >190lm/W. The advanced polycarbonate polished optics lens feature anti-ultraviolet properties and are IK08 impact resistant to ensure they are robust enough to withstand the toughest of environments.



Superior Outdoor LED Chips
Osram/Philips/Cree



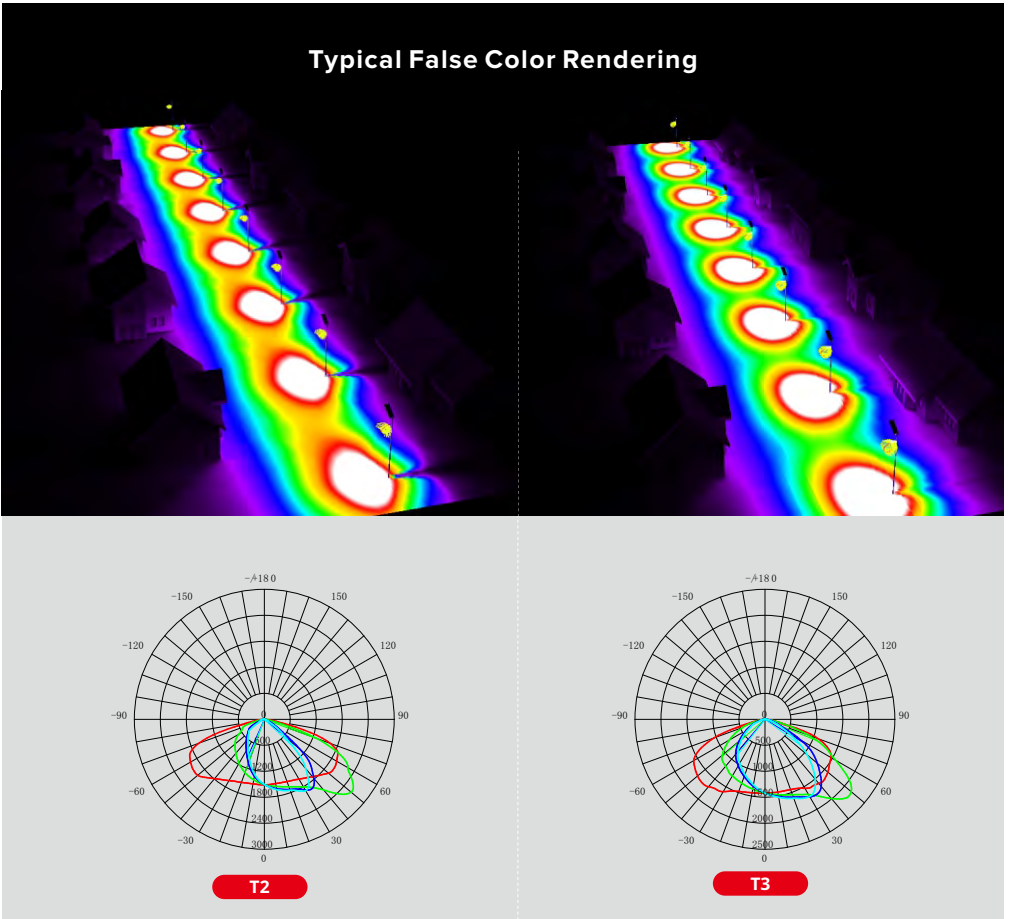
Actual Luminous
Efficacy Over 190lm/W



Lab Certified Testing
100,000 hours @TM21

Light Distribution Options Available

The new lens design improves the lighting effect and the high quality optics and precision engineering of the lens provide options of Type 2 & 3 IES lighting distribution patterns, other benefits include increased uniformity and comfort.

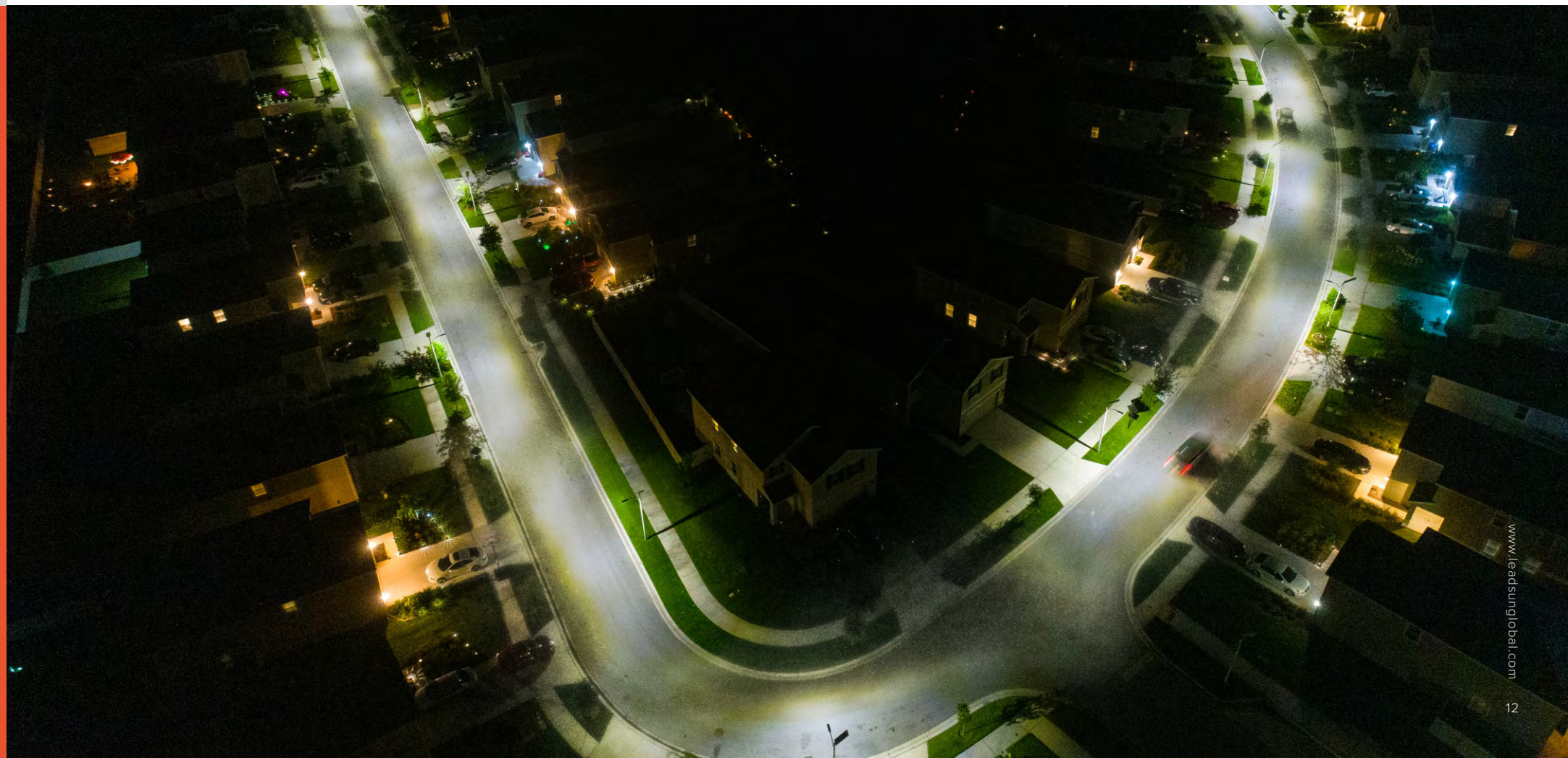


Dark Sky Certified Luminaire

Ultra-sharp cut-off optics significantly reduces lighting glare and eliminates the effects of sky-glow at night. It is offered in a 3000K and fully certified DARK SKY compliant fixture for residential development areas that want to minimize light pollution and obtrusive lighting into residential properties.



IDA Certification requires 3000K CCT or lower
and for fixture to be fixed mount at 90°



AE3C Series

LEADSUN's AE3C series is available in either a sleek looking All-In-One model, or a Split system with separate solar/battery module and LED light head with built-in PIR motion sensor.

All electronic components of the modular AE3C system are integrated in the 60W or 90W mono-crystalline solar modules.



Monocrystalline Solar Module



Efficient Controller



LiFePO4 Li-ion Battery



Motion Sensor



Superior Outdoor LED

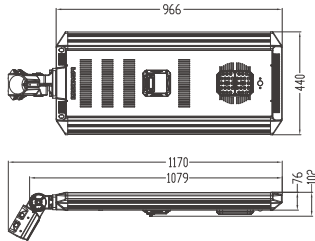


IP66 Waterproof

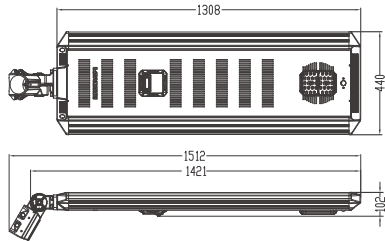
APPLICATIONS

Pathways
Residential Streets
Small Parking Lots

TECHNICAL DATA (ALL IN ONE TYPE)



AE3C6020N



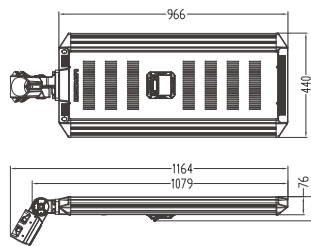
AE3C9030Q/AE3C9040R

Model No.	AE3C6020N	AE3C9030Q	AE3C9040R
Power of PV Module (W)	60	90	90
Lithium Battery Capacity (Wh)	308	512	615
PIR Sensor	✓	✓	✓
Net Weight of Product (kg)	14.5	19.5	20.2
Dimension of Product (mm)	1079×440×102	1421×440×102	1421×440×102
Light Parameters			
Light Output (W)	20	30	40
Color Temperature (K)	3000/4000/5000	3000/4000/5000	3000/4000/5000
Typical Luminous Flux (lm)	3800	5550	7200
Mounting Recommendation			
Top of Pole or Tenon OD (mm)	70~76	70~76	70~76
Installation Height (m)	4~7	6~8	6~8
Installation Distance (m)	15~25	25~35	25~35

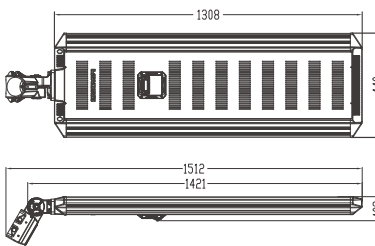


AE3C All-in-One

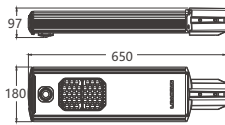
TECHNICAL DATA (SPLIT TYPE)



AE3CS60N



AE3CS90Q/AE3CS90R



RS12 / RS20 / RS30 / RS40

SOLAR ENGINE		
Model No.	AE3CS60N	AE3CS90Q/AE3CS90R
Power of PV Module (W)	60	90
Lithium Battery Capacity (Wh)	308	512/615
Net Weight of Product (kg)	14	19
Dimension of Product (mm)	1079×440×102	1421×440×102
Mounting Recommendation		
Top of Pole or Tenon OD (mm)	70~76	70~76

LED LIGHT HEAD				
Model No.	RS12	RS20	RS30	RS40
PIR Sensor		✓		
Dimension of Product (mm)	650×180×97			
Net Weight of Product (kg)	3.2			
Light Parameters				
Light Output (W)	12	20	30	40
Color Temperature (K)	3000/4000/5000			
Typical Luminous Flux (lm)	2220	3800	5550	7200
Mounting Recommendation				
Installation Height (m)	3~5	4~7	5~8	5~8
Installation Distance (m)	12~20	15~25	20~30	20~30
Top of Pole or Tenon OD (mm)	60	60	60	60

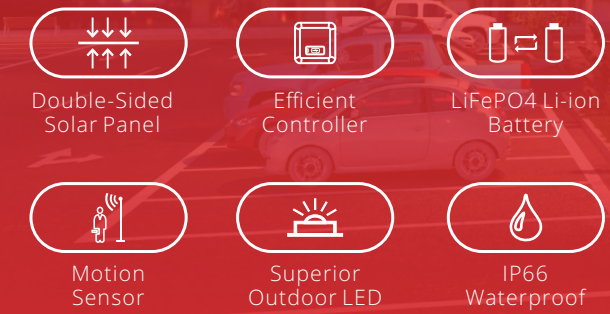


AE3C Split type

AE5 Series

AE5 series is Leadsun's latest lighting system with double-sided solar module and a highly powerful light, which claims to be a masterpiece from Leadsun.

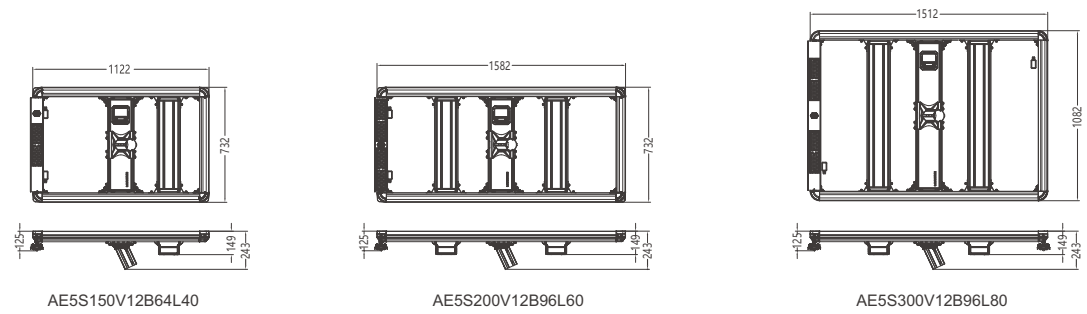
Leadsun integrates the most cutting-edge technology with highly efficient PV module, powerful LiFePO4 batteries and smart controller into sleek and compact design. The all-in-one designed AE5 series comes with adjustable LED tubes to realize different lighting angles, improves the product performance and efficiency, meanwhile, to simplify the installation and enhance user experience.



APPLICATIONS

Roads, residential area, industrial park, parking lot, etc

TECHNICAL DATA (ALL IN ONE TYPE)



TECHNICAL DATA			
Model No.	AE5S150V12B64L40	AE5S200V12B96L60	AE5S300V12B96L80
Physical Parameters			
Power of PV Module (W)	150	200	300
Lithium Battery Capacity (Ah/Wh)	64Ah (820Wh)	96Ah (1229Wh)	96Ah (1229Wh)
Qty. of LED Chips (pcs)	1×28	2×28	2×28
PIR Sensor	✓	✓	✓
Net Weight of Product (kg)	24.6	40	48.2
Dimension of Product (mm)	1122(L)×733(W)×152(T)	1582(L)×733(W)×152(T)	1512(L)×1082(W)×152(T)
Wireless Control Function (Optional)	✓	✓	✓
Light Parameters			
Light Output (W)	1×40	2×30	2×40
Optional Distribution	Bat Wing	Bat Wing	Bat Wing
Visual Angle	140°×70°	140°×70°	140°×70°
Color Temperature (K)	5000	5000	5000
Typical Luminous Flux (lm)	7200	11400	14400
Working Mode	First 4 hours, 100% brightness. After the first 4 hours, 100% brightness when motion is detected and 20% brightness when there is no detection.		
Battery Backup Time (days)	2~3 days	2~3 days	2~3 days
Light Photosensitivity (lx)	30	30	30
Mounting Recommendation			
EPA (Effective Projected Area) (ft²)	4.49	6.33	8.86
APA (Actual Projected Area) (ft²)	3.74	5.28	7.38
Wind Load Rate (mph)	130	130	130
Maximum Bracket Inner Diameter (mm)	90	90	90
Top of Pole or Tenon OD (mm)	80~85	80~85	80~85
Installation Height (m)	6~8	7~10	8~12
Installation Distance (m)	25~35	25~40	30~45





AE6 Series

Featuring a black aluminium alloy reinforced frame, the all new version is more durable than its predecessor and features a double sided solar panel generating more energy.

The AE6 system is wholly modular with all electronic components integrated within an expandable 150W to 300W sized mono-crystalline solar module which also contains an ingenious and patented dual battery system that provides double the life span compared to traditional solar lights.



Double-Sided Solar Panel



Efficient Controller



LiFePO4 Li-ion Battery



Motion Sensor



Superior Outdoor LED

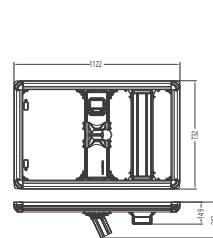


IP66 Waterproof

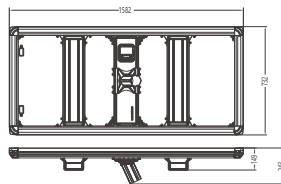
APPLICATIONS

Roads, residential area, industrial park, parking lot, etc

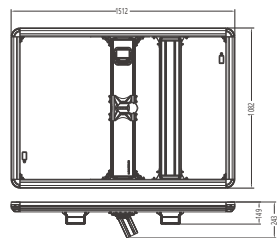
TECHNICAL DATA (SPLIT TYPE)



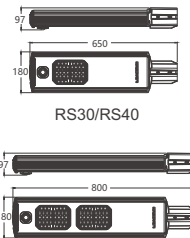
AE6S150V12B64



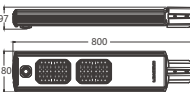
AE6S200V12B96



AE6S300V12B96



RS30/RS40



RS50/RS60/RS80

SOLAR ENGINE TECHNICAL DATA

Model No.	AE6S150V12B64	AE6S200V12B96	AE6S300V12B96
Physical Parameters			
Power of PV Module (W)	150	200	300
Lithium Battery Capacity (Ah/Wh)	64Ah (820Wh)	96Ah (1229Wh)	96Ah (1229Wh)
Net Weight of Product (kg)	26	37	46.2
Dimension of Product (mm)	1122(L)×733(W)×152(T)	1582(L)×733(W)×152(T)	1512(L)×1073(W)×152(T)
Wireless Control Function (Optional)	√	√	√
Light Parameters			
Working Mode	First 4 hours, 100% brightness. After the first 4 hours, 100% brightness when motion is detected and 20% brightness when there is no detection.		
Light Photosensitivity (lx)	30	30	30
Mounting Recommendation			
EPA (Effective Projected Area) (ft ²)	4.49	6.33	8.86
APA (Actual Projected Area) (ft ²)	3.74	5.28	7.38
Wind Load Rate (mph)	150	150	150
Maximum Bracket Inner Diameter (mm)	90	90	90
Top of Pole or Tenon OD (mm)	80~85	80~85	80~85

LED LIGHT HEAD TECHNICAL DATA

Model No.	RS30	RS40	RS50	RS60	RS80
LED Module Parameters					
Light Output (W)	30	40	50	60	80
Typical Luminous Flux (lm)	5550	7200	9500	11400	14800
Color Temperature (K)	3000/4000/5000				
Motion Sensor	PIR or DISS				
Net Weight (kg)	3.2	3.2	4.0	4.0	4.0
Dimension of Product (mm)	650×180×97	650×180×97	800×180×97	800×180×97	800×180×97
Mounting Recommendation					
Top of Pole or Tenon OD (mm)	60	60	60	60	60
Installation Height (m)	5~8	5~8	7~10	7~10	8~12
Installation Distance (m)	20~30	20~30	25~40	30~45	35~45

