



Video door phones  
and entry panels

IF YOU LOVE YOUR BUILDING

**urmet**





## Welcome home

Urmnet combines **style and design** with strong technological innovation.  
The designed products ensure **comfort, security and extensive functions**.

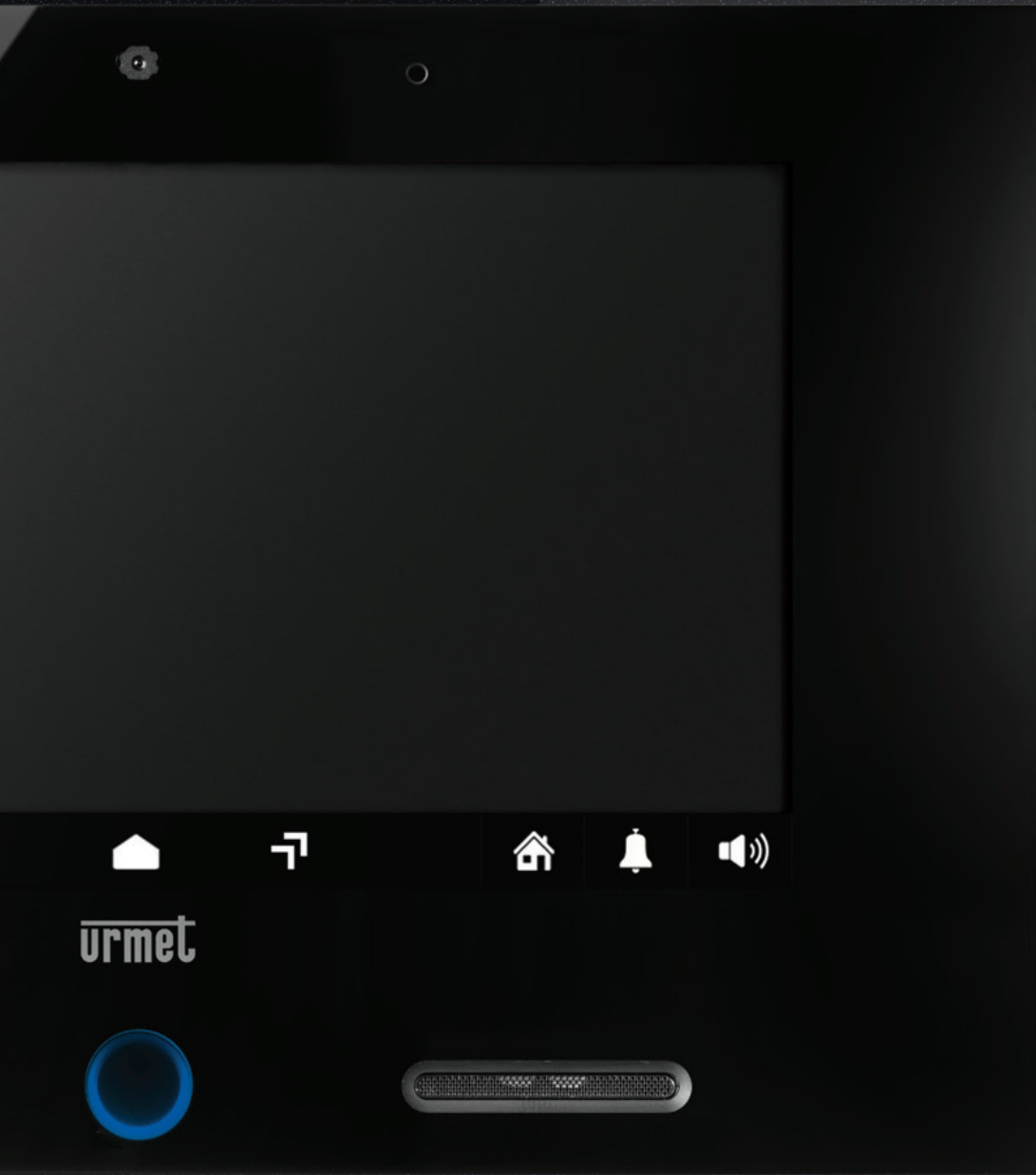


# CallMe app, the video door phone on smartphone

The app allows you to respond from  
anywhere and control the cameras for  
greater security.





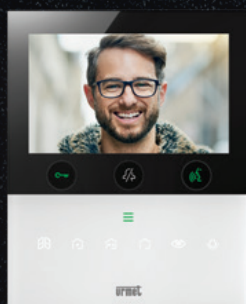


# VIDEO DOOR PHONES AND DOOR PHONES





VOG 7



VOG 5W



VOG 5



MAX 10



VMODE



1741 BASIC



RANGE  
MIRO





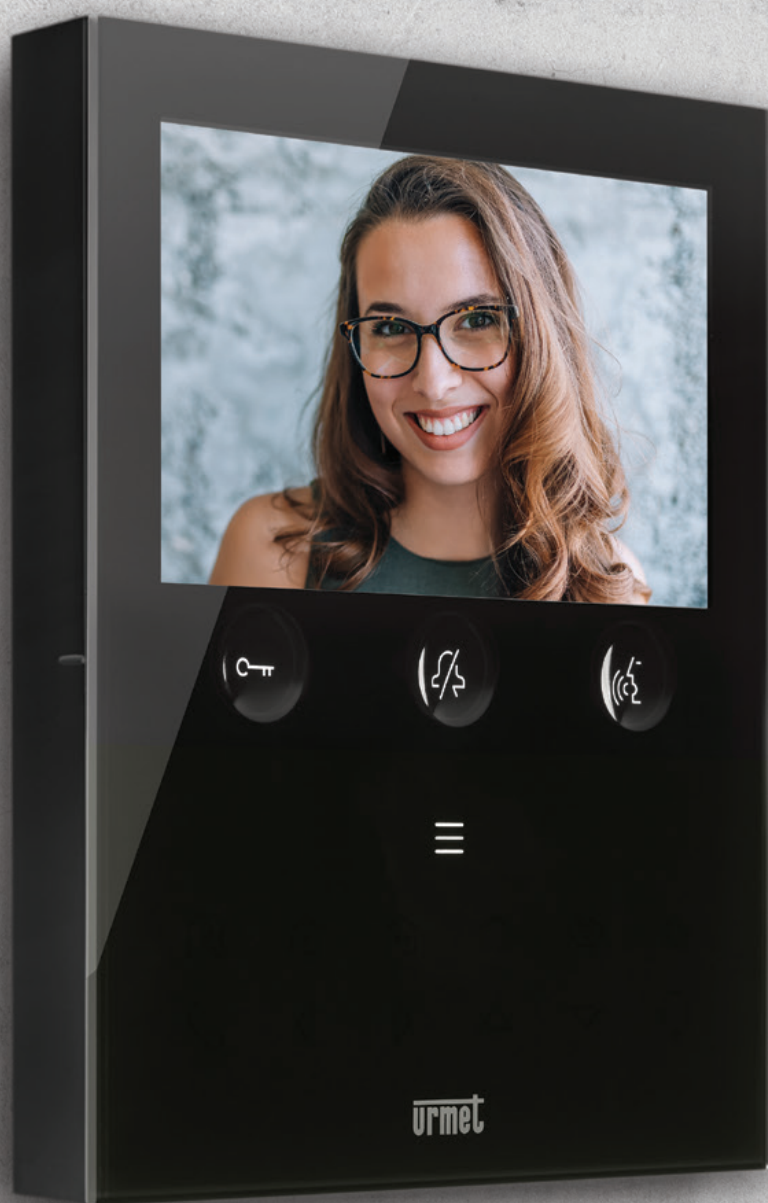




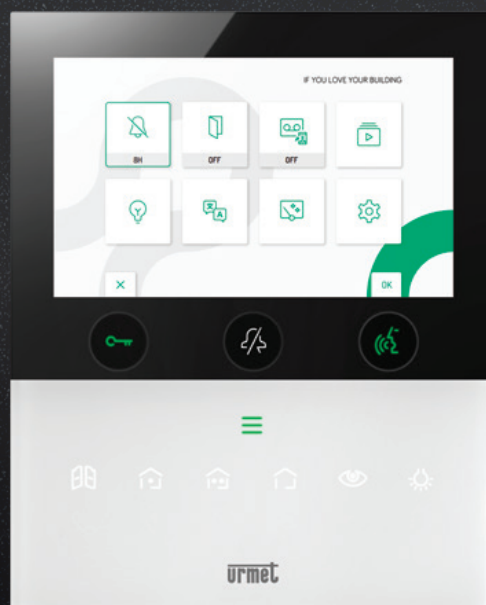
# VOG 7

7" video door phone, touchless,  
with voice and gesture commands.  
Connected monitor with **integrated**  
**proprietary voice assistant.**









## VOG 5W

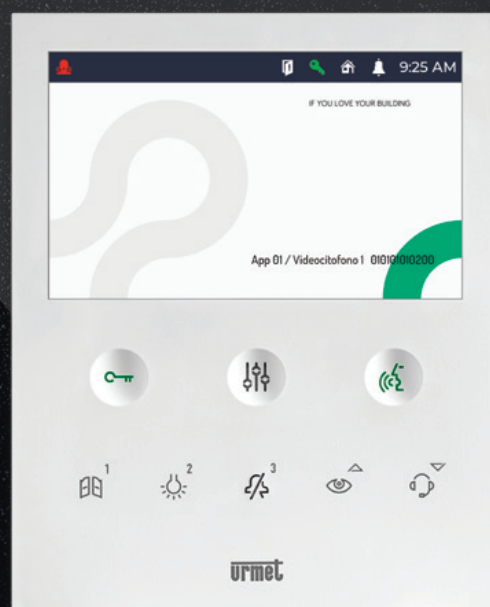
5" **soft-touch** video door phone, connected for call forwarding to smartphone. Voice or gesture commands.

**Flat glass** surface.









# VOG 5

Video door phone with 5" display,  
**soft-touch** or **touchless** using gestures.









## max<sup>10</sup>

10" IP **touchscreen** video door phone with satin aluminium frame and **advanced** video door entry and smart home system management functions.





## ✓modo

7" video door phone with **soft touch commands**.

It can handle **smart home scenarios**.





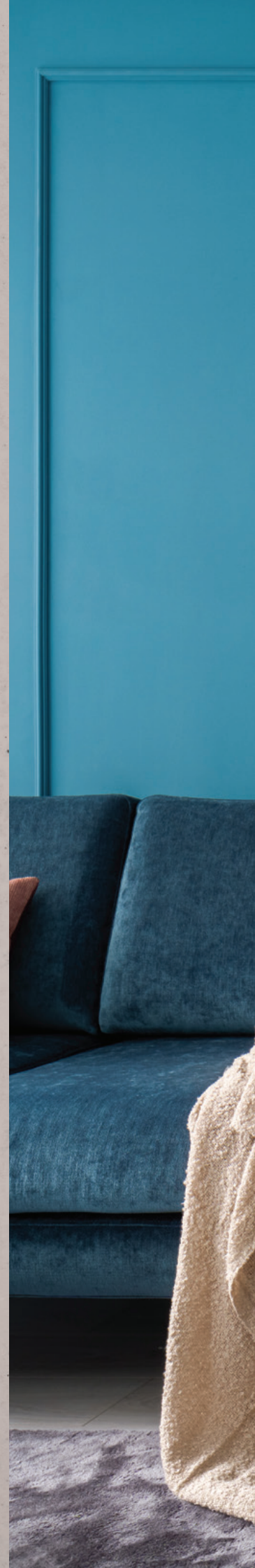






## 1741 basic

7" **touchless** IP videophone with user interface that can be viewed in standard or swipe mode.











## Range mìro

Available in hands free or handset  
versions.







urmet







# ENTRY PANELS





ALPHA



ELEKTA  
STEEL



SINTESI  
STEEL



MIKRA2





# alpha

**Modular** entry panel without frame,  
with buttons. In white, black and gray.





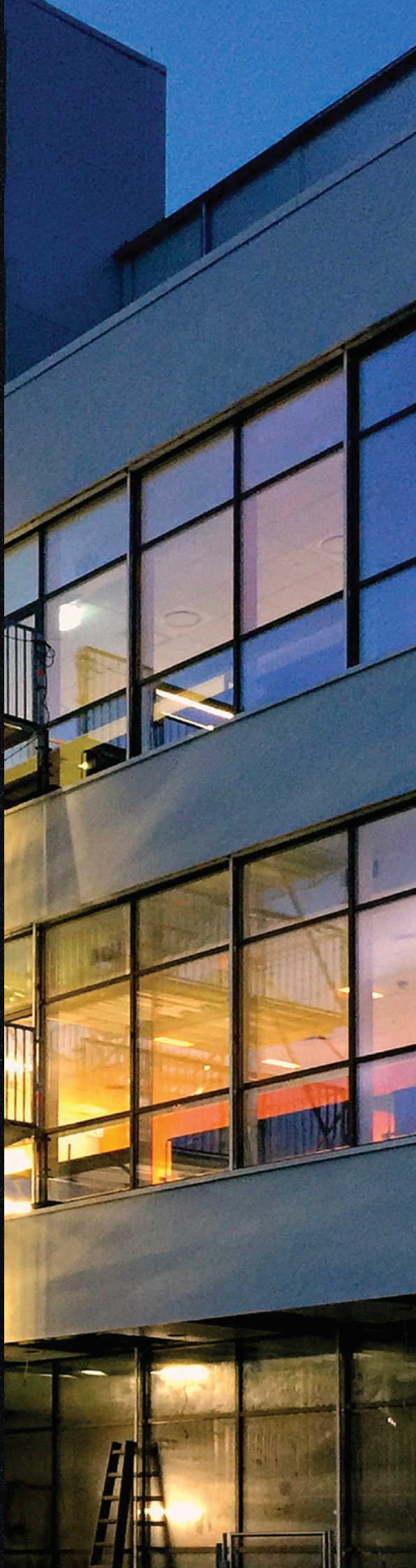






# a:pha

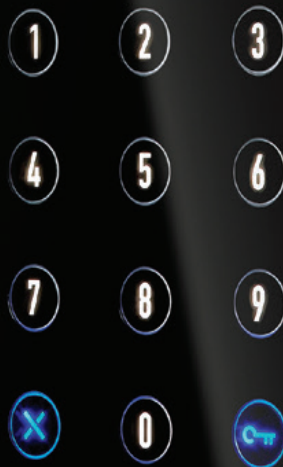
Digital **modular** entry panel.







Cialdini Antonio  
Doria Filippo  
Ficetti Claudio  
Furio Aldo



urmet





# elekta steel

**Vandal resistant** monoblock entry panel,  
steel with polished finish.  
Customisable in different colours.









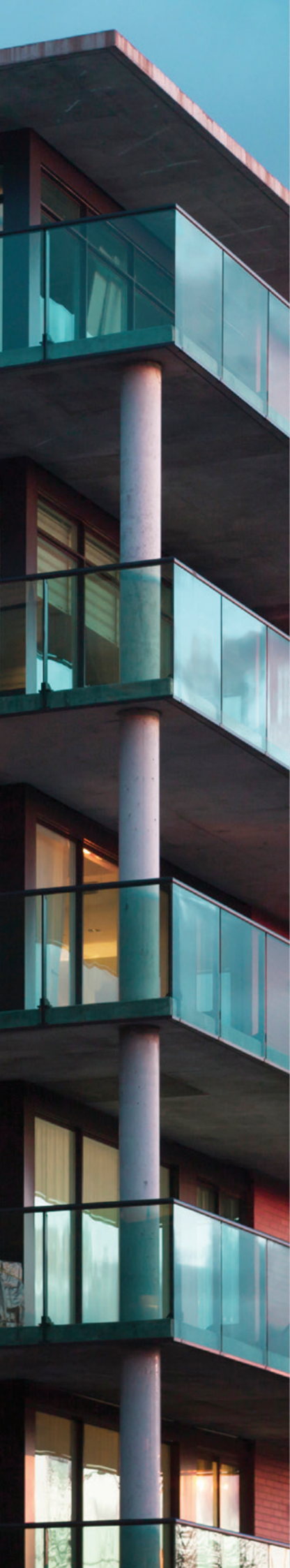


# synthesi steel

**Vandal resistant** modular entry panel,  
steel with polished finish.  
Customisable in different colours.











## Range mikra2

Compact dimensions, **shockproof** and **robust** materials. Suitable for single and two-family dwellings or small apartment blocks in the Digital version.











# ENTRY PANELS CUSTOM

**Customisation** of shapes, sizes,  
materials and operational functionality.





EXIGO



TITANIUM



ALLINOX



ELEKTA  
STEEL



SINTESI  
STEEL



MIKRA2





# exigo

**PVD anti-corrosion and anti-oxidation** treatments maintain the material's finish unchanged over time.











# Titanium

Available in **polished** or **satin** finish.  
It provides **high resistance to weathering**.









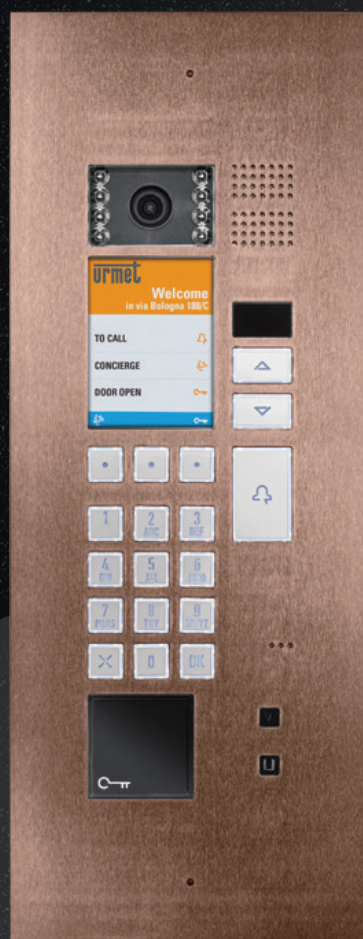


# Allinox

**Monoblock entry panels.** Colours, shapes, buttons and sizes are **customisable**.











**URMET S.p.A.**

Via Bologna, 188/C • 10154 Torino - ITALY

urmet.com • info@urmet.com



**urmet**