

KAOYI LIGHTING

contact us

Email: sales@kaoyi.com

Kaoyi Electronic Co., Ltd.
Headquarter in Taiwan.

Tel: 886(O)4-7365539
Fax: 886(O)4-7369740
Add: No.241, Sec 1, Meiliao Road, Homei Town, Changhua County,
Taiwan
Postcode: 508

Zhangzhou Kaotec Electronic
Technologic Co., Ltd.

Tel: 86(O)596-6016999
Fax: 86(O)596-6016008
Add: No. 2, Cailong Avenue, Yunling Industrial Development Zone,
Yunxiao County, Zhangzhou City, Fujian, China
Postcode: 363300

Xiamen Kaotec Electronic
Technologic Co., Ltd.

Tel: 86(O)592-5688618 / 86(O)592-5622999
Fax: 86(O)592-5688658 / 86(O)592-5688789
Add: No.66, Gaoqi North 2nd Road, Fujian Pilot Free Trade Zone,
Xiamen, China
Postcode: 361006

Zhangzhou Kaosun Electronic
Technologic Co., Ltd.

Tel: 86(O)596-8312799
Fax: 86(O)596-8312799
Add: Guanshan Industrial Park, Wu'an Town,
Changtai County, Zhangzhou City, Fujian, China
Postcode: 363900



www.kaoyi.com



WORK LIGHTS



Corporate Story



KAOYI LIGHTING GROUP

Kaoyi, a professional R&D and manufacturing company of lighting products, was established in Taiwan in 1985 and successively set up factories in Dongguan, Xiamen and Zhangzhou City in mainland China.

We are committed to developing cutting-edge technology, developing and manufacturing electronic transformers, ballasts, dimmers, energy-saving lamps and other lighting electronic products, and at the

same time developing and manufacturing dimmers, drivers, LED lights and smart products in line with the trend of lighting industry.

Products are exquisite in design and complete in variety, and are exported to Europe, Oceania, North America and other parts of the world, providing users with the most comfortable lighting experience to go with various atmospheres in need.

Since 1985



Kaoyi Electronic Co., Ltd.

Headquarter
R&D center
Sales center



Xiamen Kaotec Electronic Technologic Co., Ltd.

6,500m²
Production base
R&D center
Sales center



Zhangzhou Kaotec Electronic Technologic Co., Ltd.

25,000 m²
Production base



Zhangzhou Kaosun Electronic Technologic Co., Ltd.

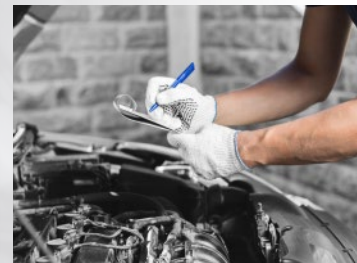
35,000m²
Production base

Work Lights

Powerful, multi-functional, flexible, compact and easy to handle. Kaoyi work lights are made for both professionals who need the best tool and those who want to have standby power for living or camping or in emergency.

All the work lights are developed to be extremely durable, energy saving, safe and reliable. Short circuit protection, overcharge & over-discharge protection, reversible battery protection are ensured. Certified adapters are adopted. Products are certified with CE. They are manufactured by our own factories and subject to strict 100% quality controls.

Application



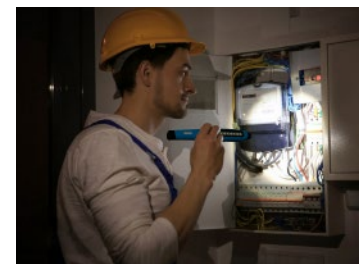
Working



Living



Camping

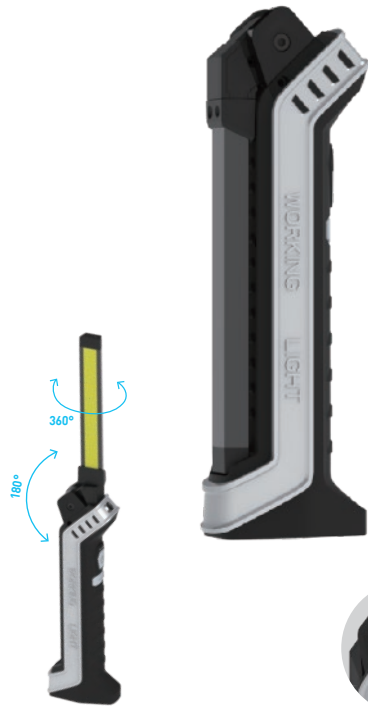


Emergency



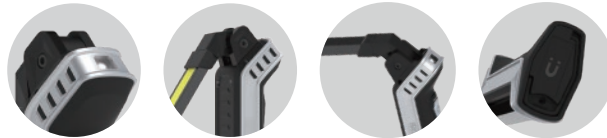
Rechargeable LED Work Light

KIT-6805WS-00



Feature

- **FRONT HIGH EFFICIENCY COB LED**
Up to 500Lm, providing superior lighting for your work environment.
- **TOP HIGH POWER LED**
Up to 100Lm, can be used as a flashlight to provide effective and clear illumination to specific target.
- **ULTRA-THIN LIGHTING PART**
Ultra-thin design (0.3 " / 7.8mm) allows lighting in narrow and inaccessible work areas.
- **CONCEALED METAL HOOK**
Concealed metal hook on the bottom can be rotated for hanging or carrying with.
- **POWERFUL MAGNET**
Powerful magnet allows lamp to be positioned securely.
- **BRIGHTNESS MEMORY**
Switch on brightness is saved when it is switched on for 2s.



Specifications

Model No.	KIT-6805WS-00		
Light source	Front light 7W COB; Top light 3W 3030 LED		
Wattage	Front light 2.1W (50%) / 4.2W (100%); Top light 1.3W		
Luminous flux(front)	250Lm (50%) / 500Lm (100%)		
Luminous flux(top)	150Lm		
Color Temp.	Front light 120° Top light ≤18.5°		
CRI	5700-6500K		
Beam angle	≥70		
Operating time	Front light 5hrs (50%) / 2.5hrs (100%) Top light 7hrs		
Charging time	3.5hrs		
Battery	3.7V 2600mAh Li-ion		
Protection class	IP42		
Cable	1m, type-C		
Input	5V 1.0A		
Dimension	53.1*31.3*297.5mm		
Net weight	423g		

Rechargeable LED Work Light

KIT-650XPS-00



Feature

- **HIGH EFFICIENCY COB/SMD LED**
Up to 400Lm/90Lm, providing superior lighting for your work environment.
- **BRIGHTNESS LEVEL SELECTABLE**
Top lighting and two levels of front light lighting selectable for application needs.
- **150 ° FOLDABLE DESIGN**
Offering illumination to large angle.
- **DUAL POWERFUL MAGNETS**
Powerful magnet in the back and bottom for flexible positioning.
- **FOLDING HOOK**
Hook on the top offers more light angle possibilities and frees hands.
- **SLIM AND LIGHT DESIGN**
Easy to carry and suitable for different applications.



Specifications

Model No.	KIT-650XPS-00		
Light source	Front light 8*0.5W 2835 LED (KIT-6509PS-00); Front light 3W COB (KIT-6502PS-00)		
Wattage	Front light 2W (50%) / 4W (100%); Top light 1.5W		
Luminous flux(front)	200Lm (50%) / 400Lm (100%)		
Luminous flux(top)	90Lm		
Color Temp.	5700-7500K		
CRI	≥70		
Beam angle	Front light 90° Top light 40°		
Operating time	Front light 5hrs (50%) / 3hrs (100%); Top light 7hrs		
Charging time	4.5hrs		
Battery	18650 3.7V 2600mAh Li-ion		
Protection class	IP20		
Cable	1m, TYPE-C USB		
Input	DC5V 1.0A		
Dimension	238*37*33mm		
Net weight	160g		



Rechargeable LED Work Light

KIT-9502PS-00



Feature

- **HIGH EFFICIENCY COB/SMD LED**
Up to 360Lm/90Lm, providing superior lighting for your work environment.
- **BRIGHTNESS LEVEL SELECTABLE**
Top lighting and two levels of front light lighting selectable for application needs.
- **150 ° FOLDABLE DESIGN**
Offering illumination to large angle.
- **DUAL POWERFUL MAGNETS**
Powerful magnet in the back and bottom for flexible positioning.
- **FOLDING HOOK**
Hook on the top offers more light angle possibilities and frees hands.
- **IP65 RATED**
High level of water and dust resistance.

Specifications

Model No.	KIT-9502PS-00		
Light source	Front light 1*3W COB; Top light 1W 3535 LED	Operating time	Front light 4.5hrs (50%) / 3hrs (100%); Top light 7hrs
Wattage	Front light 1.5W (50%) / 3W (100%); Top light 1W	Charging time	4.5hrs
Luminous flux(front)	160Lm (50%) / 360Lm (100%)	Battery	18650 3.7V 2600mAh Li-ion
Luminous flux(top)	90Lm	Protection class	IP65
Color Temp.	5700-6500K	Cable	1m, micro usb
CRI	≥80	Input	DC5V 1.0A
Beam angle	Front light 90° Top light 40°	Dimension	242*38*36mm
		Net weight	200g

Rechargeable LED Work Light -Pen Light

KIT-2802PS-00



Feature

- **HIGH EFFICIENCY COB/SMD LED**
Up to 150Lm/90Lm, providing superior lighting for your work environment.
- **BRIGHTNESS LEVEL SELECTABLE**
Top lighting and two levels of front light lighting selectable for application needs.
- **DUAL POWERFUL MAGNETS**
Powerful magnet at the back and bottom for flexible positioning.
- **PEN SHAPE DESIGN**
Easy to put in pocket or hang on belt.
- **SMALL SIZE**
Easy to carry with to anywhere.

Specifications

Model No.	KIT-2802PS-00		
Light source	Front light 1*2W COB; Top light 1W 3030 LED	Operating time	Front light 4.5hrs (50%) / 3hrs (100%); Top light 5.5hrs
Wattage	Front light 1W (50%) / 2W (100%); Top light 0.5W	Charging time	3hrs
Luminous flux(front)	90Lm (50%) / 150Lm (100%)	Battery	14650 3.7V 800mAh Li-ion
Luminous flux(top)	50Lm	Protection class	IP20
Color Temp.	5700-6500K	Cable	1m, micro usb
CRI	≥70	Input	DC5V 1.0A
Beam angle	Front light 120° Top light 40°	Dimension	168*φ25mm
		Net weight	70g



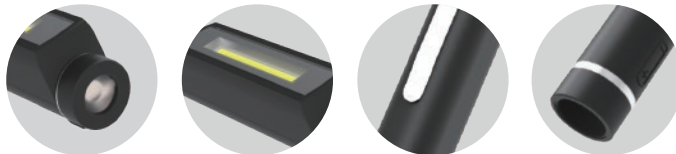
Rechargeable LED Work Light -Pen Light

KIF-2712PS-00



Feature

- **HIGH EFFICIENCY SMD LED**
Up to 200Lm/100Lm, providing superior lighting for your work environment.
- **BRIGHTNESS LEVEL SELECTABLE**
Top lighting and two levels of front light lighting selectable for application needs.
- **POWERFUL MAGNET ON BOTTOM**
A powerful magnet on bottom to free hands
- **METAL POCKET CLIP**
Easy to put in pocket or hang on belt.
- **SMALL SIZE**
Easy to carry with to anywhere.
- **BATTERY REPLACEABLE**
Use 3*1.5V AAA alkaline batteries for continuous use.



Specifications

Model No.	KIT-2712PS-00			
Light source	Front light 12*0.5W 2835 LED; Top light 1W 3030 LED		Operating time	Front light 8hrs (50%) / 4hrs (100%); Top light 8hrs
Wattage	Front light 1W (50%) / 2W (100%); Top light 1W		Charging time	/
Luminous flux(front)	100Lm (50%) / 200Lm (100%)		Battery	AAA*3 alkaline battery
Luminous flux(top)	100Lm		Protection class	IP20
Color Temp.	6000-7000K		Cable	/
CRI	≥70		Input	/
Beam angle	Front light 90°	Top light 40°	Dimension	176*φ18*24mm
			Net weight	62g

Rechargeable LED Work Light

KIT-680XPS-00



Feature

- **HIGH EFFICIENCY COB/SMD LED**
Up to 400Lm/90Lm, providing superior lighting for your work environment.
- **BRIGHTNESS LEVEL SELECTABLE**
Top lighting and two levels of front light lighting selectable for application needs.
- **150 ° FOLDABLE DESIGN**
Offering illumination to large angle.
- **DUAL POWERFUL MAGNETS**
Powerful magnet in the back and bottom for flexible positioning.
- **FOLDING HOOK**
Hook on the top offers more light angle possibilities and frees hands.



Specifications

Model No.	KIT-680XPS-00		
Light source	Front light 6*0.5W 2835 LED, Front light 3W COB; Top light 1W 3535 LED		
Wattage	Front light 1.5W (50%) / 3W (100%); Top light 1W		
Luminous flux(front)	150Lm (50%) / 300Lm (100%)		
Luminous flux(top)	90Lm		
Color Temp.	6000-7000K		
CRI	≥70		
Beam angle	Front light 90° ; Top light 40°		
Operating time	Front light 6.5hrs (50%) / 4hrs (100%); Top light 8hrs		
Charging time	3.5hrs		
Battery	18650 3.7V 2600mAh Li-ion		
Protection class	IP20		
Cable	1m, micro usb		
Input	DC5V 1.0A		
Dimension	235*35.5*28mm		
Net weight	160g		

LED Work Light (Flood Light)

KIT-8840WS-BHT

Feature



- **HIGH POWER COB**
Up to 40W providing superior lighting.
- **BRIGHTNESS SELECTABLE**
Brightness is adjustable in 5 steps with indicator showing the level.
- **WIRELESS CONTROL BY KAOYI MOBILE APP.**
Smart wireless control to adjust brightness remotely.
- **DUAL FUEL SYSTEM**
Power supply by either cable charging or Li-ion battery.
- **POWER BANK FUNCTION**
Can be used as power back to charging devices (output 5V 1A).
- **IP66 RATED LEVEL**
High dust and water resistance level allows outdoor use.



Specifications

Model No.	KIT-8840WS-BHT		
Light source	High power 40W COB		
Wattage	Five steps 8W-16W-24W-32W-40W		
Luminous flux(front)	800Lm - 1600Lm - 2400Lm - 3200Lm - 4000Lm		
Luminous flux(top)	/		
Color Temp.	6000-7000K		
CRI	≥80		
Beam angle	Front light 140°		
Operating time	10hrs - 5hrs - 3.5hrs - 2.5hrs - 2hrs		
Charging time	4hrs		
Battery	11.1V/8000mAh Li-ion		
Protection class	IP66		
Cable	1.2m		
Input	DC13.2V / 5A (output DC5V/1A)		
Dimension	224*184*53mm		
Net weight	1930g (Aluminum + POM body)		

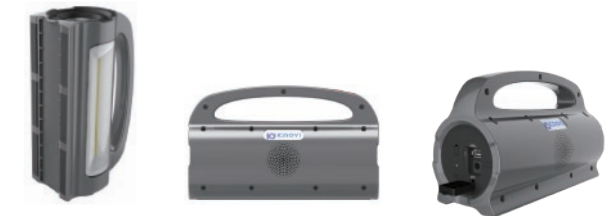
Rechargeable LED Work Light Flood Light with Speaker

KIT-8810WS-SPK

Feature



- **HIGH POWER LED**
Up to 2000Lm providing superior lighting.
- **LONG DISTANCE SPOTLIGHT LIGHTING**
3W high efficiency LED is adopted on spot lighting providing up to 100m lighting distance.
- **DUAL FUEL SYSTEM**
Power supply by either cable charging or Li-ion battery.
- **POWER BANK FUNCTION**
Can be used as power back to charging devices (output 5V 1A).
- **SPEAKER FUNCTION**
Build-in superior sound quality speaker which also can be bluetooth controlled.



Specifications

Model No.	KIT-8810WS-SPK		
Light source	Flood light 0.5W*21 3535 SMD LED; Spot light 3W LED		
Wattage	Flood light 5W (50%) / 10W (100%); Spot light 3W		
Luminous flux(front)	500Lm (50%) / 1000Lm (100%)		
Luminous flux(top)	350Lm		
Color Temp.	6000-7000K		
CRI	≥70		
Beam angle	Flood light 130° Spot light 13°		
Operating time	Flood light 4hrs (50%) / 2hrs (100%); Spot light 8hrs		
Charging time	3hrs		
Battery	7.4V/2900mAh Li-ion		
Protection class	IP20		
Cable	1m, TYPE-C		
Input	DC8.4V / 3A (output 5V 1A)		
Dimension	220*85*132.5mm		
Net weight	800g		

LED Work Light (Flood Light)

KIT-8510WS-00

Feature



- **HIGH EFFICIENCY COB LED + CONSTANT CURRENT POWER**
Up to 1000Lm, providing superior lighting for your work environment. CC circuit providing stable power supply.
- **CONCEALED HOOK + POWERFUL MAGNET**
Concealed hook on the back can be rotated for hanging or carrying with. Powerful magnet allows lamp to be positioned securely.
- **MOUNTING**
Mounting hole at the bottom allows to be used with a telescopic triangle bracket for wider lighting area.
- **HUMAN BODY RECOGNITION SYSTEM**
Build-in microwave radar system within 3-5 meters, being safe and reliable and energy saving.
- **CAN BE POWERED BY SOLAR PANEL**
It can be powered by solar energy when being connected to a solar panel.



Specifications

Model No.	KIT-8510WS-00		
Light source	Front light 10W COB	Operating time	Front light 3.6hrs (50%) / 1.8hrs (100%)
Wattage	Front light 5W (50%) / 10W (100%)	Charging time	4 hrs
Luminous flux(front)	500Lm (50%) / 1000Lm (100%)	Battery	3.7V 4000mAh Li-ion
Luminous flux(top)	/	Protection class	IP65
Color Temp.	Front light 120°	Cable	1m, type-C
CRI	6000K	Input	5V 2.0A
Beam angle	≥80	Dimension	150*60*45mm
		Net weight	TBC

Rechargeable LED Work Light - Sterilamp

KCF-8803PS-UVC



Feature



- **UV EFFICIENT DISINFECTION**
Efficient disinfection and sterilization - 275nm, 10cm distance, 10seconds, killing 99.9% of bacteria.
- **MULTIPLE APPLICATIONS**
Home use, kitchen, cabinet, bathroom, or to be carried with while traveling to use in hotel.
- **OPERATION TIME DISPLAY**
LCD can display sterilization time for convenient use.
- **MULTIPLE FUNCTIONS**
Both lighting and sterilization.
- **UV RESISTANCE PLASTIC**
UV resistance plastic is used.



Specifications

Model No.	KCF-8803PS-UVC		
Light source	Front light 3535 UVC+UVA LED; Top light 1W 3535 LED	Operating time	UVC light 1 month (20times/day); Top light 6hrs
Wattage	Front light 1.5W (50%) / 3W (100%); Top light 1W	Charging time	4.5hrs
Luminous flux(front)	/	Battery	3.7V/1350mAh Li-ion
Luminous flux(top)	90Lm	Protection class	IP20
Color Temp.	Top light 6000-7000K	Cable	1m, TYPE-C
CRI	≥70	Input	DC5V 1.0A
Beam angle	Top light 40°	Dimension	150*37*14mm
		Net weight	56g