



2F LEUCHTEN

We customize your light



The company in the heart of the Salzburg mountains was founded in 1972 and employs more than 80 highly motivated people.

The employees originate mostly from the region and together they unite the various skills. Locksmith, painter, carpenter, tailor, electrical engineer, mechanical engineer and lighting designer introduce their skills to the field.

2F is a factory that can reinvent itself again and again. It sees every single manufactured model as an experience and an opportunity to build new ways to produce unique lighting.

Passion

Design

We support you through representation of your idea in a 3D CAD drawing – We ensure feasibility and you can put the 2D or 3D model in your planning.

Manufacture

Computerized logistics and independent checks make our lighting to high quality products.

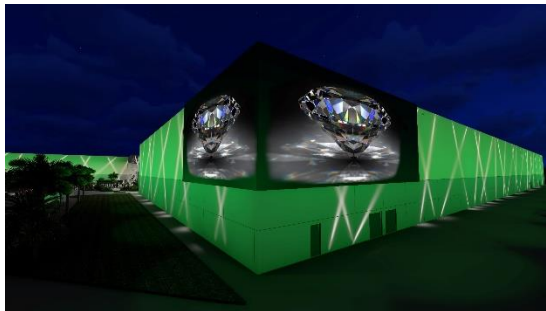
Planning

Planning for LED recessed spots and indirect lighting. Suggestions for light installation provided up to the rendering stage. Appraisal of economic viability and reduction of the variety of lamps.

Installation

On request we are able to do the installation on site. Our experienced people are able to work with high sensible light art. Technical know how for LED and light control systems is standard

In the beginning there's an idea
and at the end there is a light –
and in between there's a workshop
in wisch ist's manufactured.



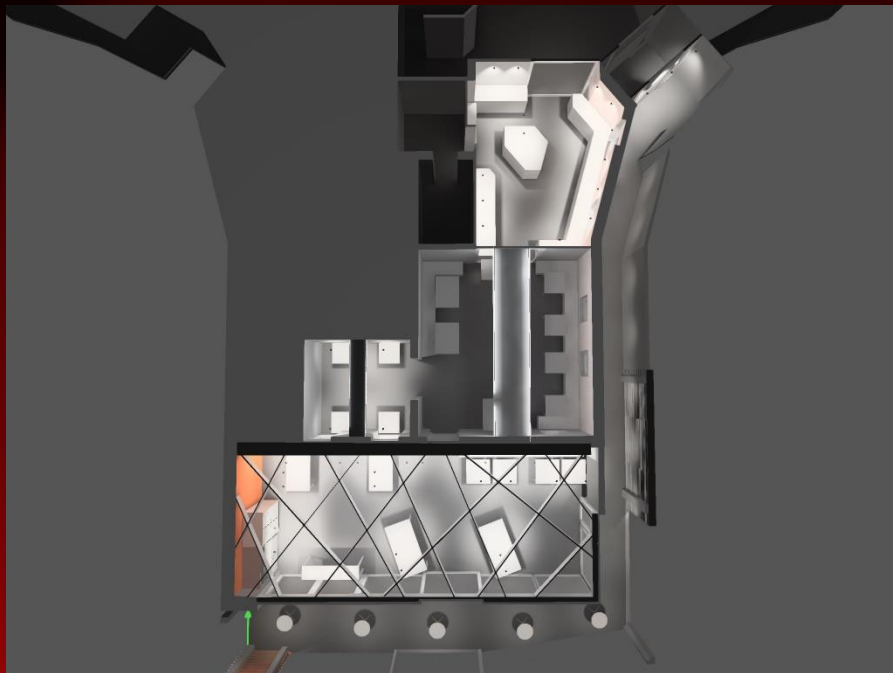
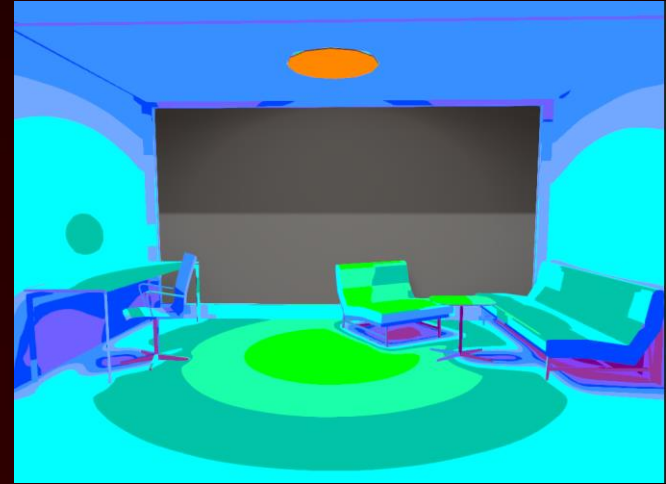
Design

Once the plans have been completed it's time for the production department to begin.

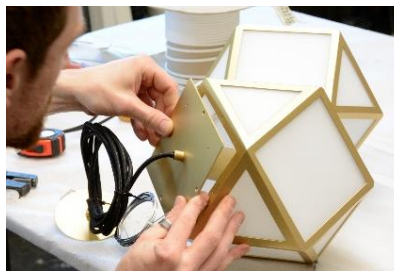
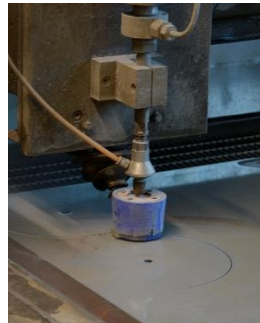
We back you in the drafting phase with 3D CAD technology that enables us to render digital visualisations of your intentions. From early on, our construction designers create drafts of viable solutions and make 2D and 3D models available for use in your planning work. This guarantees a seamless process – from the initial concept, on to product development, and through to production.

Planning

Our ambitious, enthusiastic and highly experienced team looks forward to helping you optimise your bright ideas.



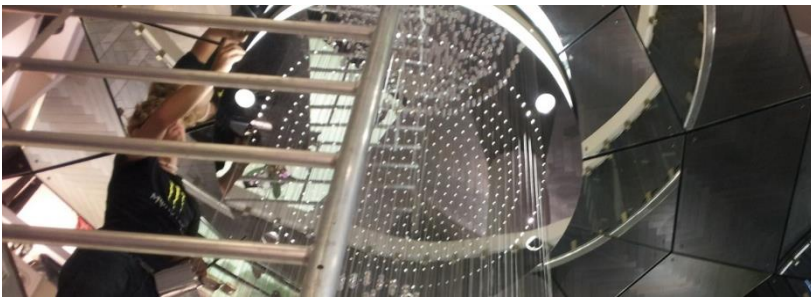
Reliable light plans, well-thought-through from an early stage, are about far more than the choice of the right lighting. Indeed, today's expectations are far greater: Style, presence, individuality, versatility, durability, energy efficiency and innovative technology all play decisive roles. The vast variety of lighting scenarios demands an analytical approach to solution optimisation for every working environment, basic lighting, background illumination and light pooling.



Manufactur

Combining traditional materials with modern technologies requires on-the-ground expertise when it comes to the production and installation of our lighting.

Nothing is of greater value to us than the flexibility, skill and know-how of our employees. Masterpieces of light art are produced here with great care and attention to detail, and in adherence with all technical specifications.



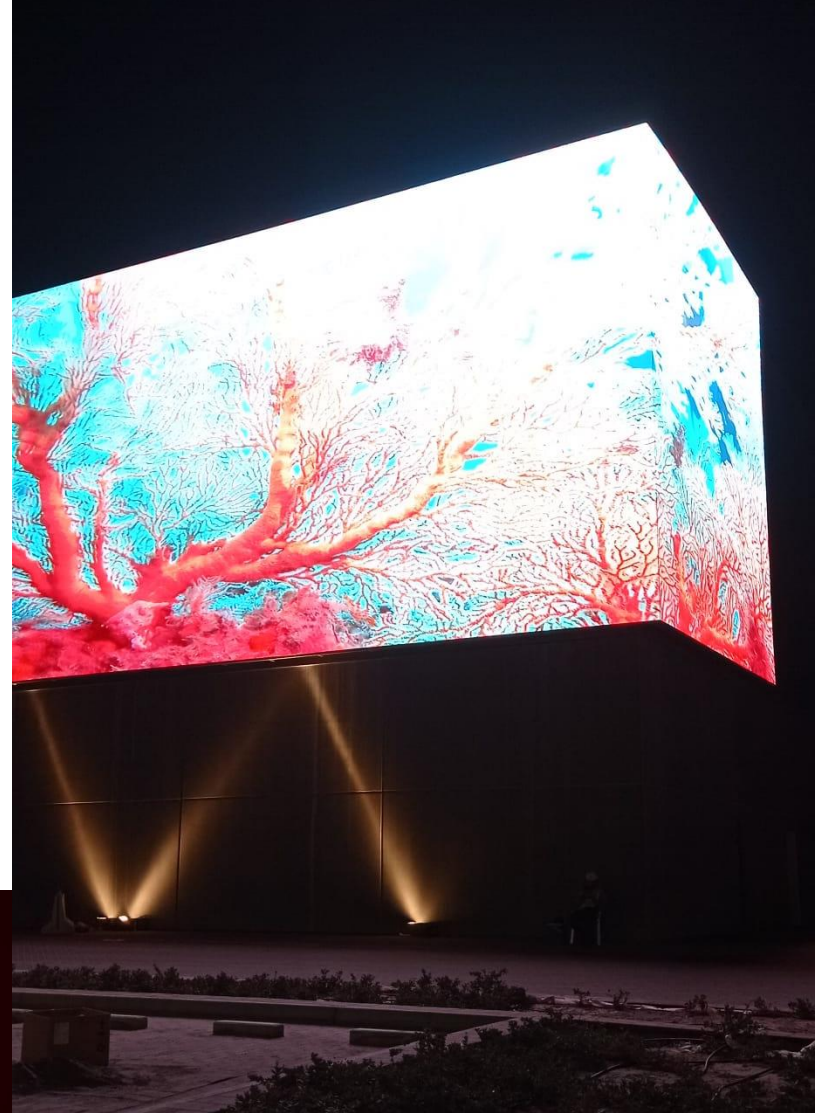
Installation

If desired, we're always delighted to take over responsibility for the on-site installation of your solution. Our assembly technicians have a vast wealth of experience in dealing with highly-sensitive and illuminating works of art, and their expertise here is completely state-of-the-art.

Our specialists can't wait to help.

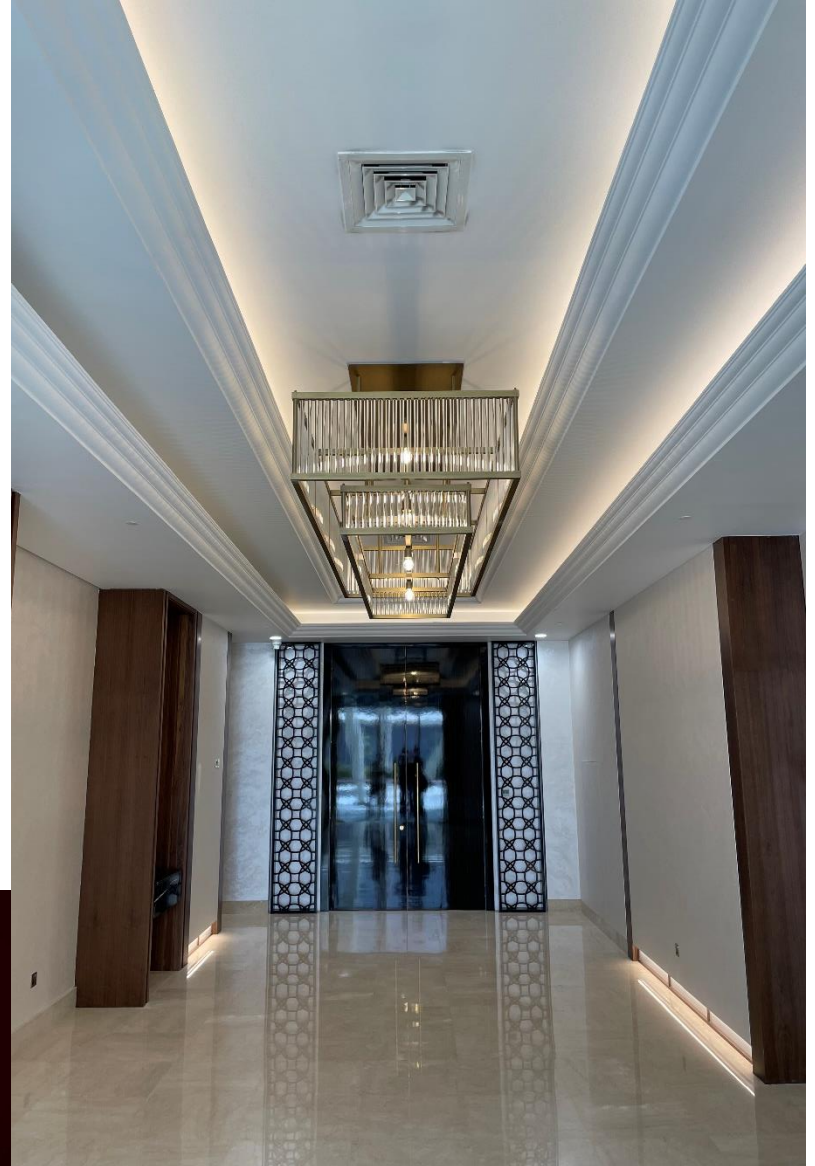


Exhibition World Bahrain



Exhibition World Bahrain







Seehotel Sonne Eich, Swiss



Seehotel Sonne Eich, Swiss



Seehotel Sonne Eich, Swiss



Shedhalle Zug, Swiss



Jørgensens Hotel, Dänemark



Hotel Lindenwirt Drachselsried Bayerischer Wald, Germany



COCC, and coherent AG

Kulturzentrum Presswerk Arbon, Swiss



Rainerhof Flachau, Austria



© Austria Trend Hotels

Austria Trend Hotel Bosei,



Hilton Paris Charles De Gaulle Airport





Hilton Bukarest





Almanac, Barcelona



Hotel Breeze Amsterdam



Kultur Casino Bern, Swiss



Kultur Casino Bern, Swiss



Bürgenstock Resort Luzern, Swiss



Bürgenstock Resort Luzern, Swiss



My Home My Hotel Rosenheim, Germany





Hyatt Regency Amsterdam



©Eric Laignel

Le Meridien Etoile Paris, France



7 Heavens - Zermatt, Swiss



Kameha Grand Zürich, Swiss



Kameha Grand Zürich, Swiss



Kameha Grand Zürich, Swiss



Chedi Andermatt, Swiss



Chedi Andermatt, Swiss



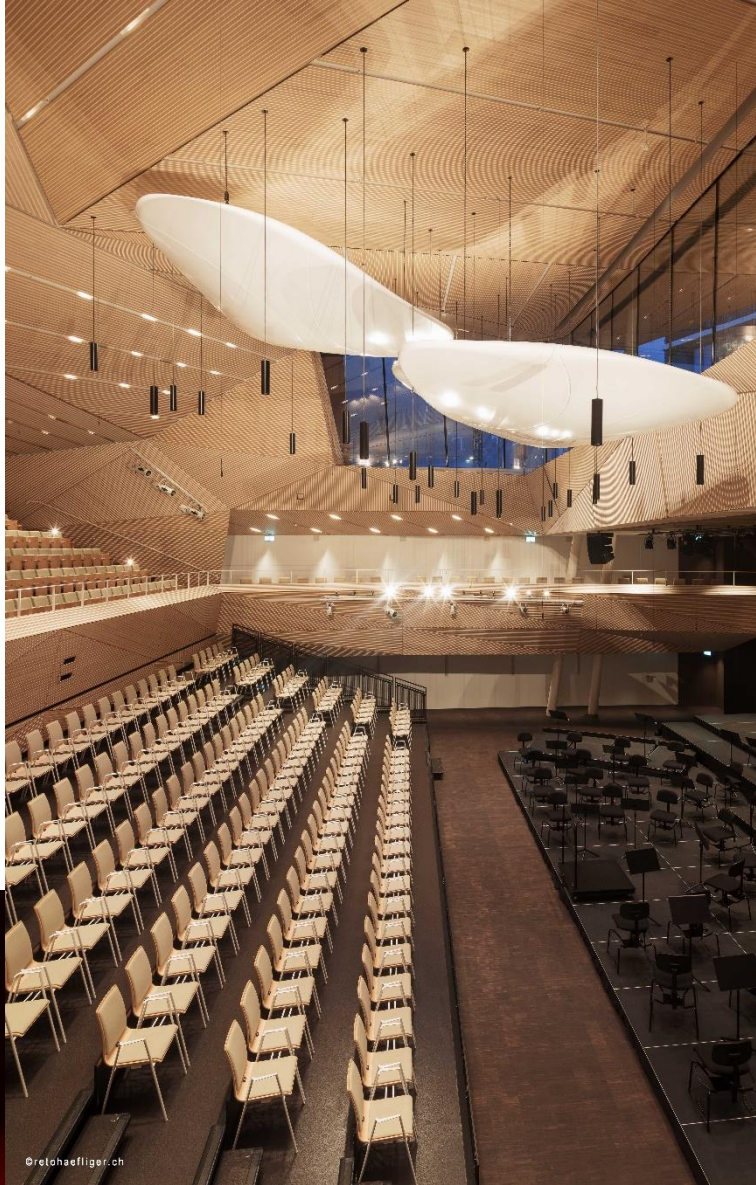
Chedi Andermatt, Swiss



Chedi Andermatt, Swiss



The Dunloe Hotel & Gardens, Ireland



Konzerthalle Andermatt, Swiss



© Pius Amrein, Schindler Aufzüge

Schindler Auditorium, Swiss



HANS BUCHEGGER

general manager

+43 676 842744 201

hans.buchegger@2f-leuchten.com



SIGI HAUNSPERGER

area sales manager

Salzburg

sigi.haunsperger@2f-leuchten.com



CLEMENS BRANDSTÄTTER

area sales manager

Salzburg

+43 676 842744 300

clemens.brandstaetter@2f-leuchten.com



DANIEL FALKNER

area sales manager

Wien, ÖÖ, NÖ

+43 676 842744 302

daniel.falkner@2f-leuchten.com



GEORG KRONREIF

area sales manager

Stmk, Kärnten, Voralberg

+43 676 842744 304

georg.kronreif@2f-leuchten.com



MARTIN BAUMANN

area sales manager

Germany

+49 151 29176891

martin.baumann@2f-leuchten.com



MILENA AREZINA

sales international

+43 676 842744 305

milena.arezina@2f-leuchten.com



PASCAL STUTZ

sales director

Switzerland

+41 79 609 0452

pascal.stutz@2f-leuchte.com



SIMON SOMMER

area sales manager

Switzerland

+41 79 901 3483

simon.sommer@2f-leuchten.com



GÜNTER LIENBACHER

lighting consultant

back office

+43 6243 2407 - 354

guenter.lienbacher@2f-leuchten.com

THANK YOU

2f-leuchten.com