



QuickFix

THE **REVOLUTIONARY** TRUNKING SYSTEM

DISCOVER UP TO
6X FASTER INSTALLATION

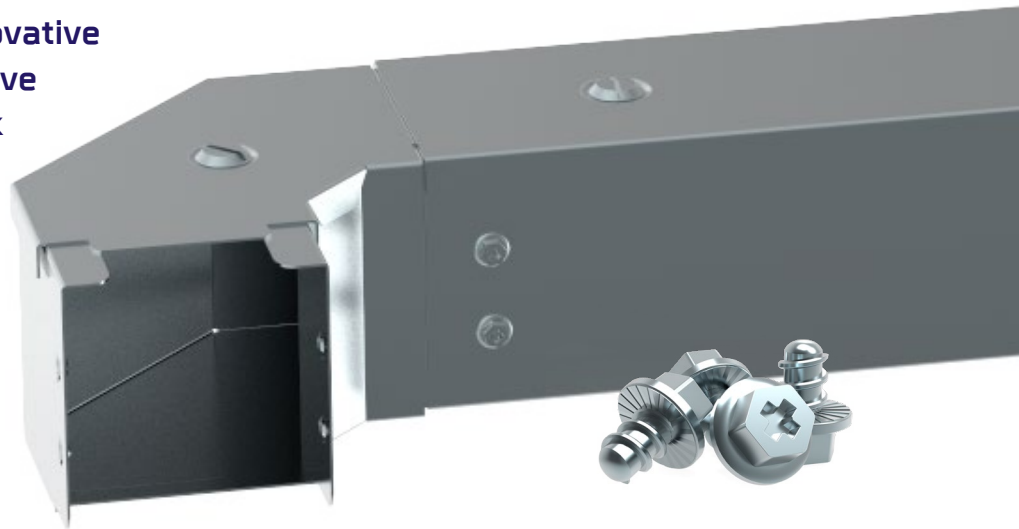


UNITRUNK



UP TO **6X** FASTER CABLE MANAGEMENT INSTALLATION

Introducing QuickFix, the innovative trunking range designed to save time onsite thanks to its quick and easy to install design.



UniBolt Fixings

Fast fitting UniBolt reduces installation times by up to 80%



IP4X Compliant

Compliant as standard with the easy to assemble system

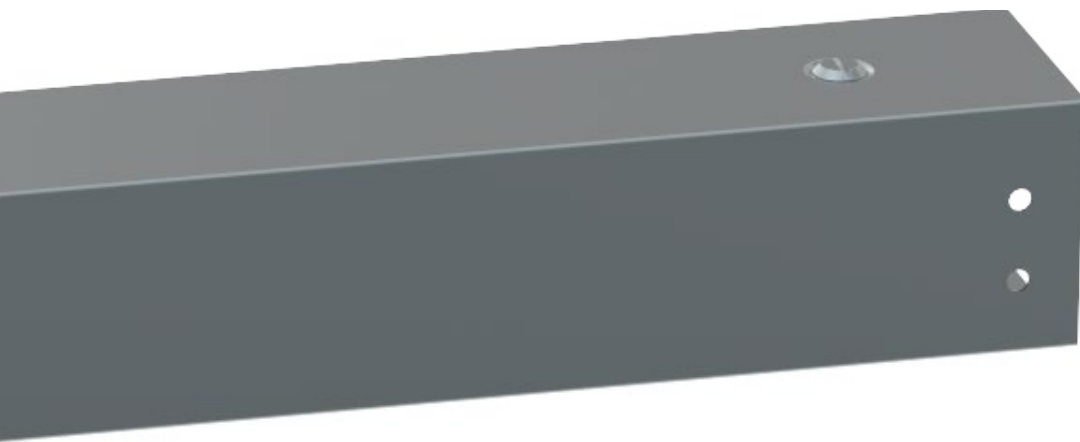


Complete Range

Innovative, rapid installation cable management systems

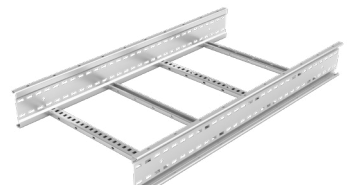
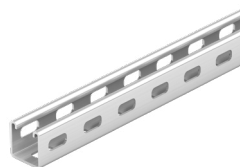
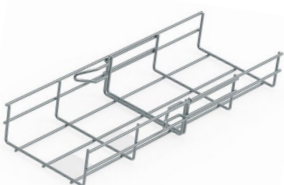
SCAN HERE

to check out the time saving
simplicity for yourself



Rapid Installation

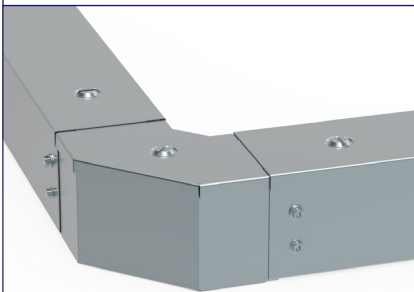
Product Range



Known for our market leading engineering and product design for over 50 years, our new QuickFix range completes an already extensive offering of cable management solutions which focus primarily on reducing installation time on site using quality assured products.

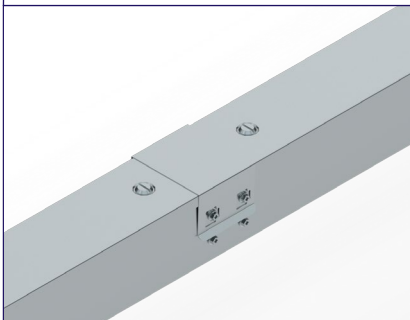
Quickfix is a complete range of trunking and fittings manufactured to standards as described in BS EN 50085-1:2005, in best quality, hot dipped galvanised sheet steel to BS EN 10346:2015.

Length to Fitting



- Slide the fitting's integrated coupler into the trunking length.
- Secure into place with the UniBolts supplied.
- Thanks to its engineered design once the lids are secured into place IP4X compliance is standard, meaning no extra components are required.

Length to Length



- Cover straps are only required on length to length joins.
- Simply snap the cover strap into place to ensure IP4X compliance.
- Cover straps are supplied with QuickFix lengths as standard. Cover straps can be ordered separately using code - TS.

UniBolt



- The UniBolt's simple, yet effective design, enables cable management system installation times to be reduced by as much as 80%.
- Universal head
- Bespoke thread
- Serration and domed safety end



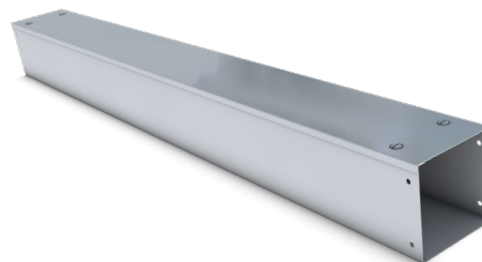
QUICKFIX TRUNKING SYSTEMS

QuickFix Trunking

Ref.TK22 50mm x 50mm
Ref.TK33 75mm x 75mm
Ref.TK42 100mm x 50mm
Ref.TK44 100mm x 100mm
Ref.TK66 150mm x 150mm

Bespoke sizes available on request

*Cover straps for length to length assembly are supplied with lengths as standard.

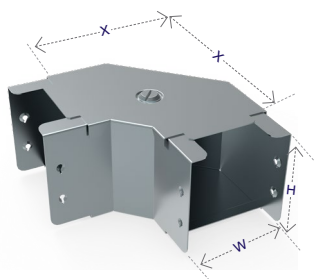


QuickFix trunking is manufactured from pre-galvanised steel and is supplied in 3m lengths. Other sizes and finishes are available on request (See code guide at the end of this section).

Gusset Bend Top Lid

Ref.GTB

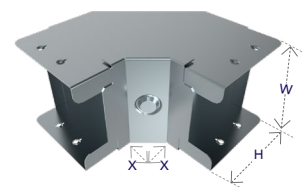
Code	W	H	X
22	50	50	91
33	75	75	115
42	100	50	140
44	100	100	140
66	150	150	193



Gusset Bend Inside Lid

Ref.GIB

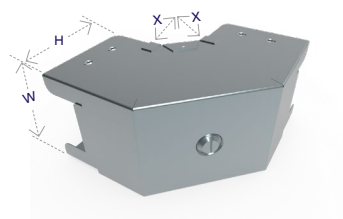
Code	W	H	X
22	50	50	25
33	75	75	25
42	100	50	25
44	100	100	25
66	150	150	25



Gusset Bend Outside Lid

Ref.GOB

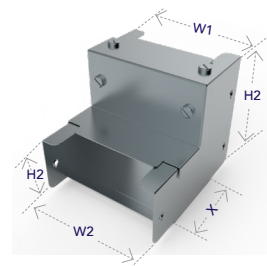
Code	W	H	X
22	50	50	25
33	75	75	25
42	100	50	25
44	100	100	25
66	150	150	25



Reducer

Ref.RE

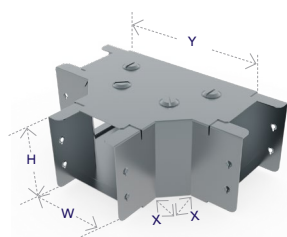
Code	W1	H1	W2	H2	X
33-22	75	75	50	50	60
42-22	100	50	50	50	60
44-33	100	100	75	75	60
66-44	150	150	100	100	60



Gusset Tee Top Lid

Ref.GTT

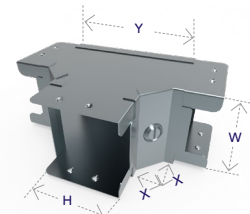
Code	W	H	X	Y
22	50	50	25	129
33	75	75	25	154
42	100	50	25	180
44	100	100	25	180
66	150	150	25	230



Gusset Tee Inside Lid

Ref.GIT

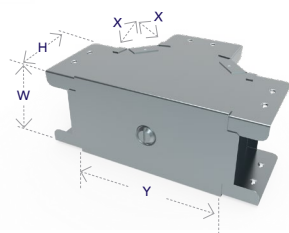
Code	W	H	X	Y
22	50	50	25	115
33	75	75	25	140
42	100	50	25	115
44	100	100	25	165
66	150	150	25	215



Gusset Tee Outside Lid

Ref.GOT

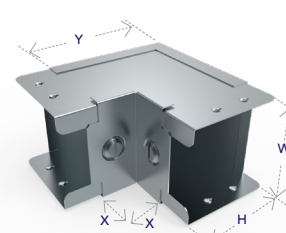
Code	W	H	X	Y
22	50	50	25	115
33	75	75	25	140
42	100	50	25	115
44	100	100	25	165
66	150	150	25	215



Sharp Elbow Inside Lid

Ref.SIE

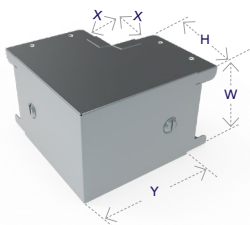
Code	W	H	X	Y
22	50	50	30	85
33	75	75	30	110
42	100	50	30	85
44	100	100	30	135
66	150	150	30	187



Sharp Elbow Outside Lid

Ref.SOE

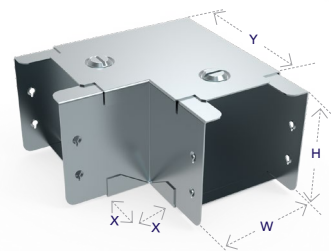
Code	W	H	X	Y
22	50	50	30	85
33	75	75	30	110
42	100	50	30	85
44	100	100	30	135
66	150	150	30	187



Sharp Elbow Top Lid

Ref.STE

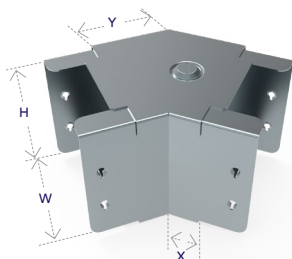
Code	W	H	X	Y
22	50	50	30	85
33	75	75	30	110
42	100	50	30	130
44	100	100	30	130
66	150	150	30	185



45° Elbow Top Lid

Ref.TE

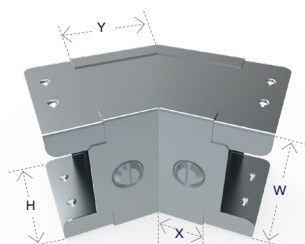
Code	W	H	X	Y
22	50	50	20	43
33	75	75	20	53
42	100	50	20	63
44	100	100	20	63
66	150	150	20	83



45° Elbow Inside Lid

Ref.IE

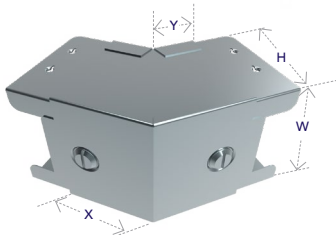
Code	W	H	X	Y
22	50	50	30	53
33	75	75	30	63
42	100	50	30	53
44	100	100	30	83
66	150	150	30	103



45° Elbow Outside Lid

Ref.OE

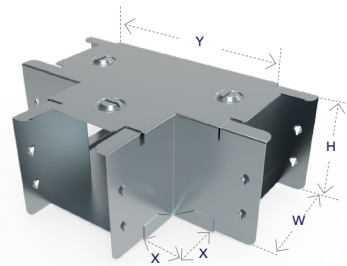
Code	W	H	X	Y
22	50	50	53	30
33	75	75	63	30
42	100	50	53	30
44	100	100	83	30
66	150	150	103	30



Sharp Tee Top Lid

Ref.STT

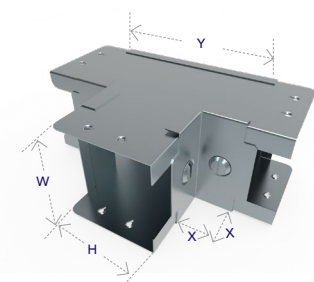
Code	W	H	X	Y
22	50	50	30	115
33	75	75	30	140
42	100	50	30	165
44	100	100	30	165
66	150	150	30	215



Sharp Tee Inside Lid

Ref.SIT

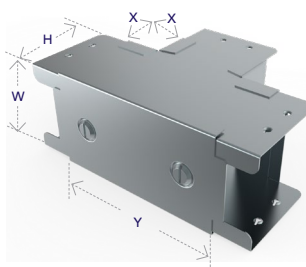
Code	W	H	X	Y
22	50	50	30	112
33	75	75	30	137
42	100	50	30	112
44	100	100	30	162
66	150	150	30	212



Sharp Tee Outside Lid

Ref.SOT

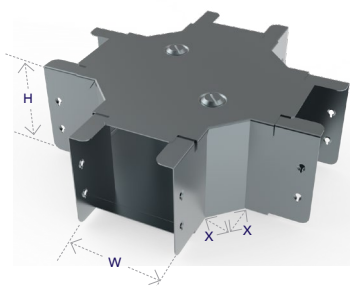
Code	W	H	X	Y
22	50	50	30	112
33	75	75	30	137
42	100	50	30	112
44	100	100	30	162
66	150	150	30	212



Intersection Box

Ref.ITB

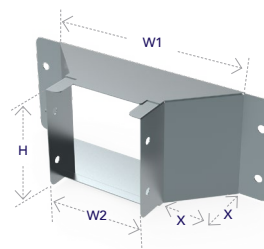
Code	W	H	X
22	50	50	25
33	75	75	25
42	100	50	25
44	100	100	25
66	150	150	25



Flared Flange

Ref.FF

Code	W1	W2	H	X
22	145	50	50	50
33	175	75	75	50
42	200	100	50	50
44	200	100	100	50
66	250	150	150	50

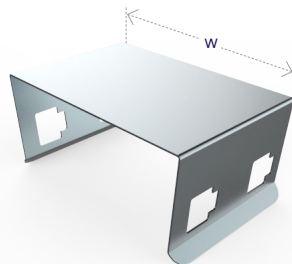


QUICKFIX TRUNKING ACCESSORIES

Cover Strap

Ref.TS

Code	W
2	50
3	75
4	100
6	150

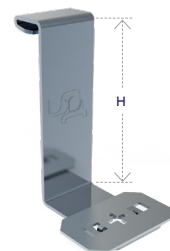


NB. Cover Straps for length to length assembly are supplied with lengths as standard.

Trunking to Channel Bracket

Ref.TKHDB

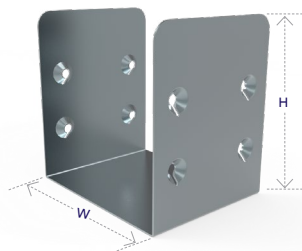
Code	H
2	50
3	75
4	100
6	150



Trunking Coupler

Ref.TC

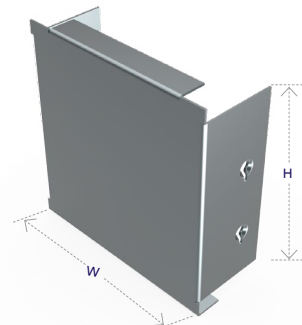
Code	W	H
22	50	50
33	75	75
42	100	50
44	100	100
66	150	150



Blank End

Ref.BE

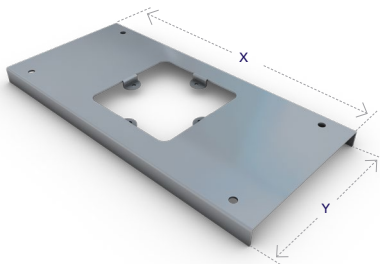
Code	W	H
22	50	50
33	75	75
42	100	50
44	100	100
66	150	150



Socket Outlet Single

Ref.STL1

Code	X	Y
4	230	110
6	230	160

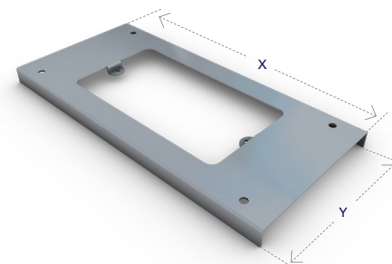


Can be supplied with off centre cutouts.

Socket Outlet Double

Ref.STL2

Code	X	Y
4	230	110
6	230	160



Cable Support

Ref.CS

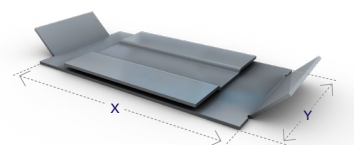
Code	W	H
22	50	50
33	75	75
42	100	50
44	100	100
66	150	150



Fire Barrier Clip

Ref.FB

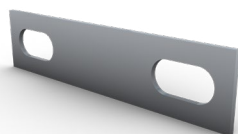
Code	Y
2	41
3	60
4	85
6	137



Earth Link

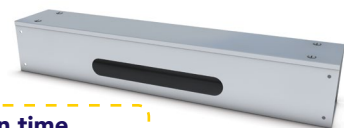
Ref.CES (Plain Copper)

Ref. TCES (Tinned Copper)



Distribution Board Trunking

Ref.TKDB



Save on installation time

Sizes manufactured to customer requirements, no cutting onsite required.

QuickFix Multi
Compartment
Trunking

Lighting
Trunking

Uniklip
Cable Tray

Speedway
Cable Ladder

Cable Basket
Systems

Channel &
Support

Floor
Trunking

Bench Outlet
& Perimeter
Trunking

Steel Conduit
(Class 4)

Innovative
Design
Solutions

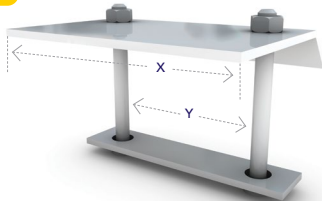
Accessories
& Supports

Index

Beam Clamp A

Ref.BCA22 50mm x 50mm

Code	X	Y
22	90	60

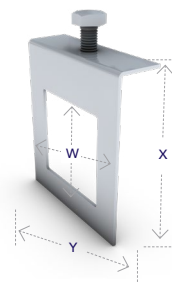


Window Beam Clamp

Ref.WBC22 50mm x 50mm

Code	X	Y	W
22	90	103	50

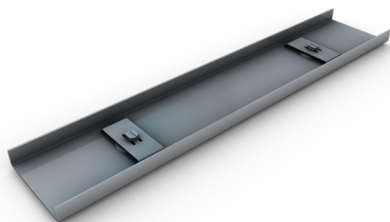
C/W M10 x 40 CPB (Bolt).



Galvanised Steel Lid

Ref.GSL

Code	W
2	50
3	75
4	100
6	150
8	200
9	225
12	300

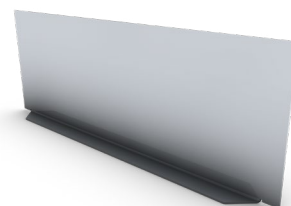


Supplied in 3 metre lengths.

Dividing Fillets

Ref.DF

Code	W
2	50
3	75
4	100
6	150

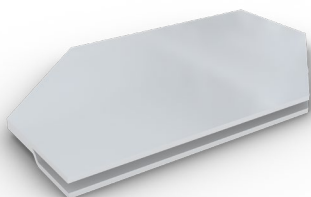


Supplied in 3 metre lengths.

Metal Retaining Strap

Ref.CR

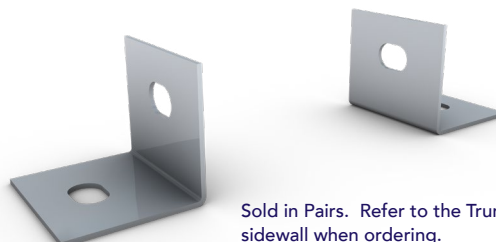
Code	W
2	50
3	75
4	100
6	150



Flanged Coupling

Ref.FC

Code
22
33
44
66


Sold in Pairs. Refer to the Trunking sidewall when ordering.
(Example TK42 use FC22)

Plastic Cable Retaining Strap

Ref. CR2/3 50mm x 75mm

Ref. CR4/6 100mm x 150mm

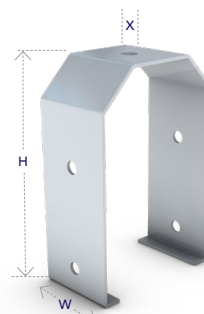


Hanger Bracket

Ref.HBL(x)

Code	H	W	X	X
22	85	55	10	20
33	135	85	10	20
44	165	115	10	20
66	245	165	10	20

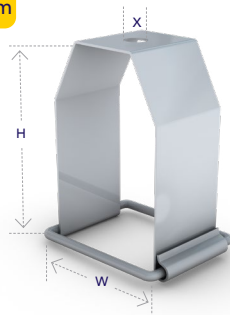
Other sizes available on request.



Hanger Bracket (with Swing Bar)

Ref.HBL22SP(x) 50mm x 50mm

Code	W	H	X	X
22	55	85	10	20

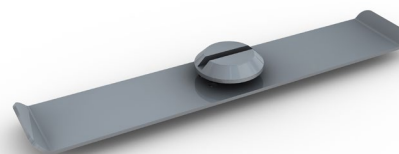


Lid Fastener

Ref.LCS2 50mm

Ref.LCS3 75mm

Ref.LCS4 100mm


Available to suit 50mm, 75mm or 100mm widths.
Note: For sizes over 100mm use LCS2 x2.

QUICKFIX LIGHTING TRUNKING ACCESSORIES

Long Coupler

Ref.LCL22 50mm x 50mm

Ref.LCL33 75mm x 75mm



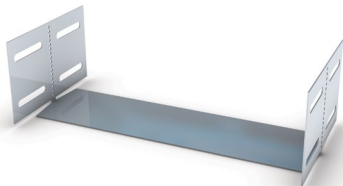
Our entire range of Lighting Trunking and Accessories may be used in conjunction with QuickFix trunking. They will be IP4X compliant as standard.

Visit our website for full details of our Lighting Trunking Accessory Range.

Visit our website to view our complete product guide, including our standard trunking range, which features additional sizes, alternative lid options and various material configurations.

Adjustable Bends & Adjustable Length Couplers

Ref.TAC



BAB/SIZE



Our range of Adjustable Bends and Adjustable Length Couplers may be used in conjunction with QuickFix trunking.

They will not be IP4X compliant as standard and will be supplied with standard screw fixings.

Visit our website for details of our full Standard Trunking range and accessories.

Need something special or can't find what you're looking for?

Get in touch with our Design Team to discuss bespoke products or advice on choosing the best solution for a specialist project.

email: bespoke@unitrunk.co.uk



CODE GUIDE

STEP 1: CHOOSE FINISH



PRE-GALVANISED



POWDER COATED

STEP 2: CHOOSE PRODUCT

CODE	PRODUCT NAME
TK	Trunking (3m lengths)*
TS	Cover Strap <small>(Width Only)</small>
TKHDB	Trunking to Channel Bracket <small>(Height Only)</small>
GSL	Galvanised Steel Lid <small>(Width Only)</small>
TC	Trunking Coupling
DF	Dividing Fillet (loose) <small>(Height Only)</small>
GTB	Gusset Bend (Top Lid)
GIB	Gusset Bend (Inside Lid)
GOB	Gusset Bend (Outside Lid)
STE	Sharp Elbow (Top Lid)
SIE	Sharp Elbow (Inside Lid)
SOE	Sharp Elbow (Outside Lid)
GTT	Gusset Tee (Top lid)
GIT	Gusset Tee (Inside Lid)
GOT	Gusset Tee (Outside Lid)
STT	Sharp Tee (Top Lid)
SIT	Sharp Tee (Inside Lid)
SOT	Sharp Tee (Outside Lid)
ITB	Intersection Box
TE	45° Elbow (Top Lid)
IE	45° Elbow (Inside Lid)
OE	45° Elbow (Outside Lid)
RE	Reducer
FF	Flared Flange
BE	Blank End
FB	Fire Barrier Clip
LCS	Lid Clips (Strap and Stud)
FC	Flanged Coupling
CS	Cable Support
CES	Earth Link (Copper) x 10
TCES	Earth Link (Tinned Copper) x 10
CR	Cable Retainer Strap x 10
STLI	Socket Outlet (Single)
STL2	Socket Outlet (Double)
PES	PVC Edging Strip - per metre

STEP 3: CHOOSE SIZE

WIDTH	HEIGHT	CODE	X1	X2	X3	X4
50	50	22	✓	✓		
75	50	32	✓	✓		
75	75	33	✓	✓		
100	50	42	✓	✓	✓	
100	75	43	✓	✓	✓	
100	100	44	✓	✓	✓	
150	50	62	✓	✓	✓	✓
150	75	63	✓	✓	✓	✓
150	100	64	✓	✓	✓	✓
150	150	66	✓	✓	✓	✓
200	50	82	✓	✓	✓	✓
200	75	83	✓	✓	✓	✓
200	100	84	✓	✓	✓	✓
200	150	86	✓	✓	✓	✓
200	200	88	✓	✓	✓	✓
225	50	92	✓	✓	✓	✓
225	75	93	✓	✓	✓	✓
225	100	94	✓	✓	✓	✓
225	150	96	✓	✓	✓	✓
225	225	99	✓	✓	✓	✓

STEP 4: COMPARTMENTS

NO. OF COMPARTMENTS POSSIBLE

STEP 5: GAUGE

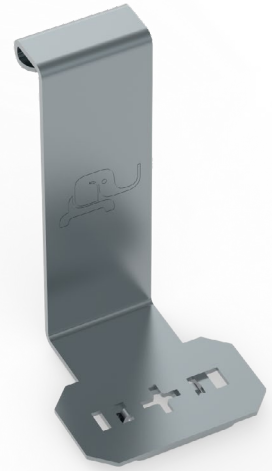
Gauges conform to latest specifications.
For specialist requirements a range of gauges are available on request.

For trunking sizes greater than 9"x9", alternative lid options, and/or multiple material configurations, please see our Standard Trunking range.

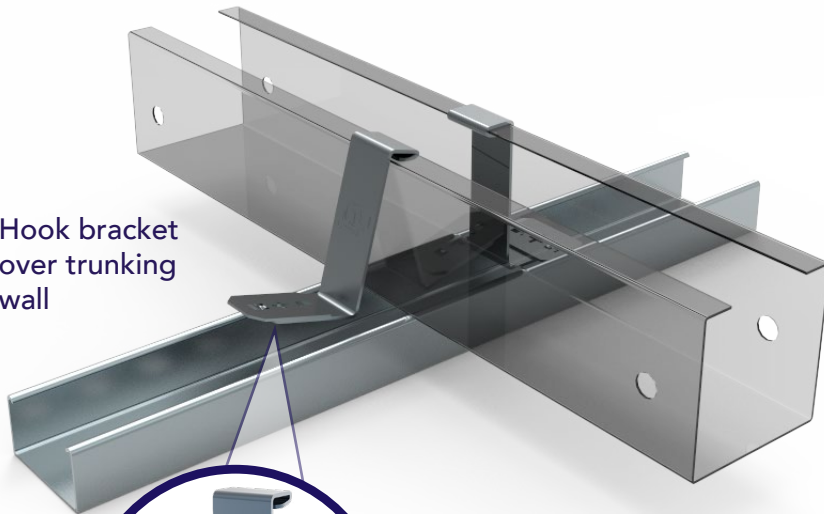
*Trunking lengths are supplied with Cover Straps to ensure IP4X compliance.
Cover Straps are ONLY required on length to length joins.

The **small** bracket making a **BIG** impact!

Introducing the latest addition to our cable trunking accessories range. The simple, innovative bracket secures trunking length to channel in seconds.



1. Hook bracket over trunking wall



2. Rotate bracket base to secure into position



3. Attach trunking lid as usual

- ✓ UP TO X7 FASTER
- ✓ REDUCED LABOUR
- ✓ ZERO DRILLING

ORDER CODE: TKHBD

