



THE BEST
WIRING THE WORLD



Your reliable supplier



We, EXW, are a professional manufacturer of high quality structure copper cabling products such as CAT.8 / 6A / 6 & 5E patch cords, modular plugs, keystone jacks, patch panels, other cabling accessories and fiber optic system. With strong design and mold fabrication teams, we are ready to develop new products together with our esteem customers, as well as to provide the best OEM / ODM service.



Adhering to our motto of "Excellent Quality, Continuous Development, Continuous Improvement and Customer Satisfaction", we strive to maintain long-term partnerships with customers. Quality is our pride and we take responsibility!



COPPER

CATEGORY 8 SOLUTION

P1

Category 8 Channel

FIELD TERMINATION PLUG

P2

Full Shielded Field Termination Plug
Unshielded Field Termination Plug

KEYSTONE JACK

P4

180° Keystone Jack
90° Keystone Jack
Slim Type 90° Keystone Jack
Full Shielded Keystone Jack

CAT6A PATCH PANEL

P10

Category 6A Patch Panel

PATCH PANEL

P12

Unshielded PCB Module Patch Panel
High Density Snap-in Keystone Panel
Foldable Angled Keystone Panel
Cassette Patch Panel

COPPER TRUNK ASSEMBLY

P16

Copper Trunk Assembly

CABLE MANAGEMENT

P17

Hinged Angled Cable Management
Flat Cable Management

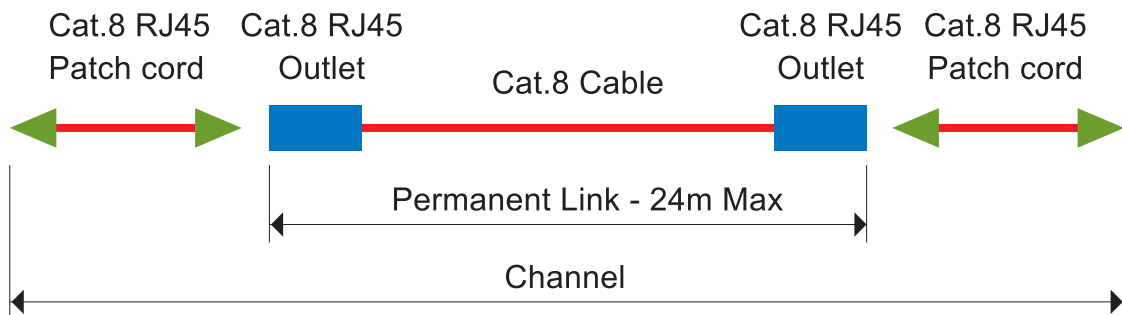
INDUSTRIAL SOLUTION

P18

Rigid Industrial Ethernet Solution



Category 8 Channel

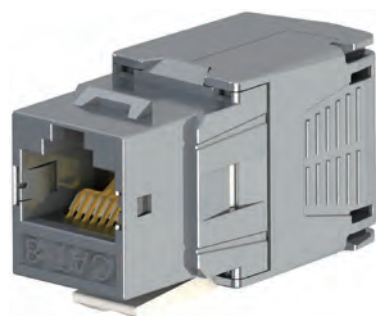


AWG of cord	De-rating rate factor (%)	Length of cord (m)	Total max. length of channel (m)
22 & 23	0	8	32
24	20	6	30
26	50	4	28

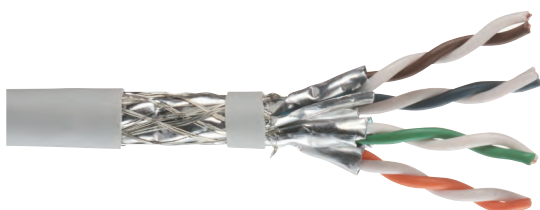
Plug for Cat.8 RJ45 Patch cord



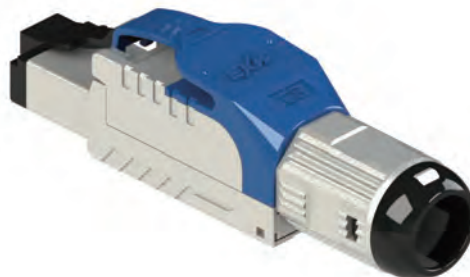
Cat.8 RJ45 Outlet



Cat. 8 Cable



Full Shielded Field Termination Plug



- Full shielded with zinc alloy housing
- T568A & B wiring
- C8 channel performance verified
- Complied with the C6A patch cord component
- Cable wire gauge: 22AWG to 26AWG
- Cable outer diameter: 6.0 to 8.5mm
- Suitable for the PoE plus (IEEE 802.3at) applications
- Easy, quick and reliable installation

PART NO	DESCRIPTION
3J01-K01-00001	Cat. 6A patch cord component level, full shielded, screw-fit boot type
3J01-K01-00002	Cat. 8 channel level, full shielded, screw-fit boot type

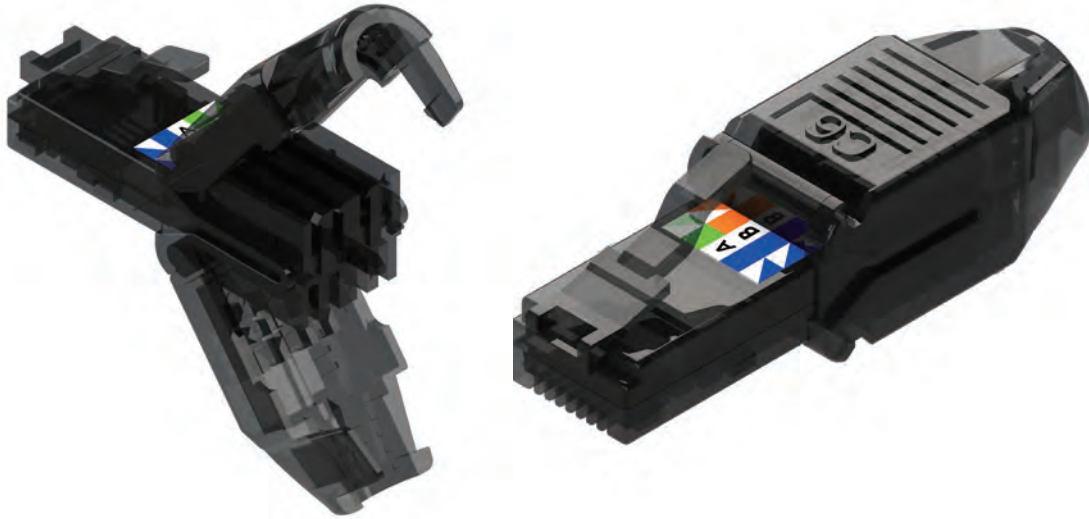
Suitable for easy crimping tool



3J01-L01-00002

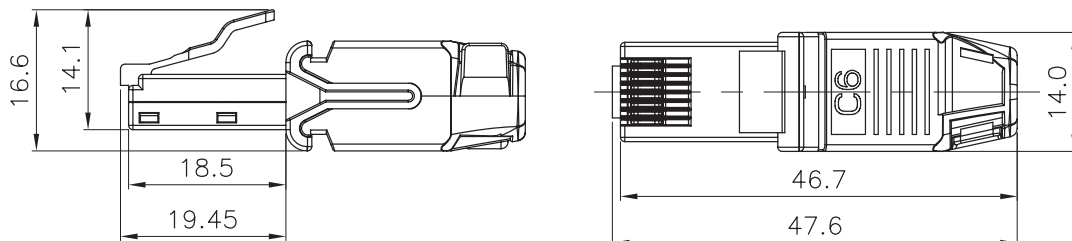


Unshielded Field Termination Plug

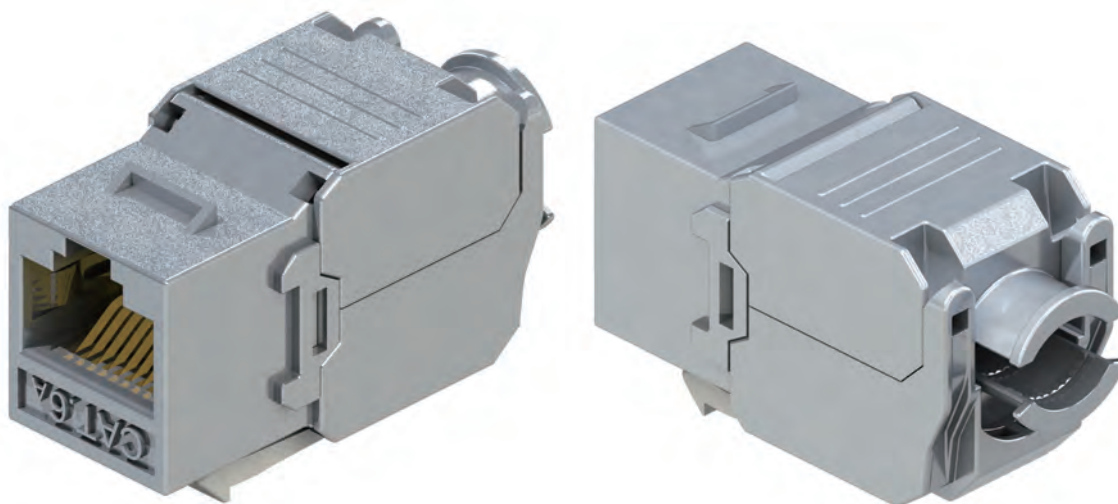


- Glassy black color, PC material
- T568A & B wiring
- L x W x H: 47.6 x 14.0 x 16.6mm
- Complied with the C6 / C6A patch cord component
- Cable wire gauge: 23AWG to 26AWG
- Cable outer diameter: 5.5 to 6.5mm
- Suitable for the PoE plus(IEEE802.3at) applications

PART NO	DESCRIPTION
3J01-K01-00005	Cat. 6 patch cord component level, unshielded
3J01-K01-00006	Cat. 6A patch cord component level, unshielded



180° Keystone Jack



- Full shielded by zinc alloy housing
- T568A & B wiring
- UL safety listed
- Cable wire gauge: 23AWG to 26AWG
- Cable outer diameter: 5.0 to 8.0mm

PART NO	DESCRIPTION
3J01-A01-00009	Cat. 6 component level, full shielded
3J01-A01-00001	Cat. 6A component level, full shielded

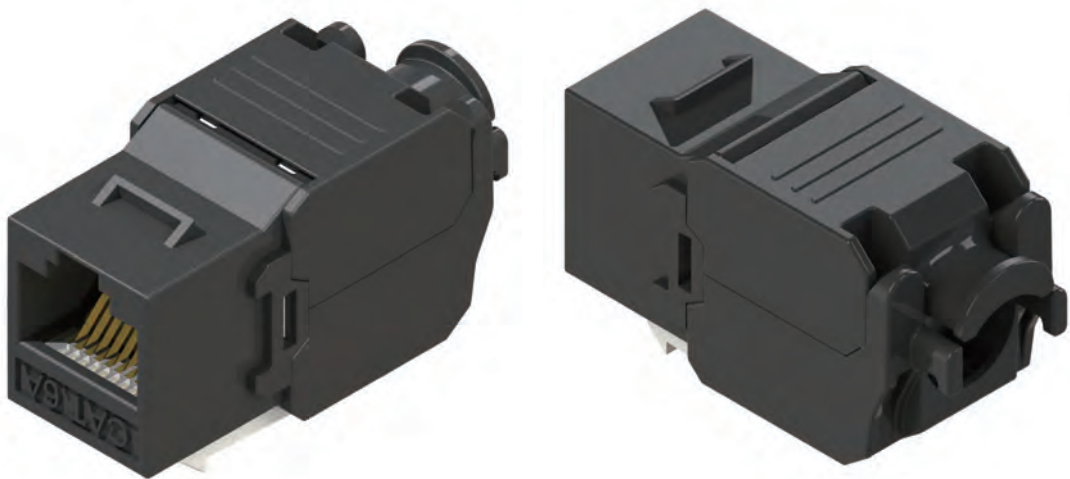
- L x W x H: 37.8 x 16.0 x 22.7
- Fits for 1U 24 port and 1U 48 port keystone panel

Suitable for easy crimping tool



3J01-L01-00001

180° Keystone Jack



- T568A & B wiring
- UL safety listed
- Copper wire gauge: 23AWG to 26AWG
- Cable outer diameter: 5.0 to 8.0mm

PART NO	DESCRIPTION
3J01-A01-00008	Cat. 6 component level, unshielded, Black
3J01-A01-00022	Cat. 6A component level, unshielded, Black

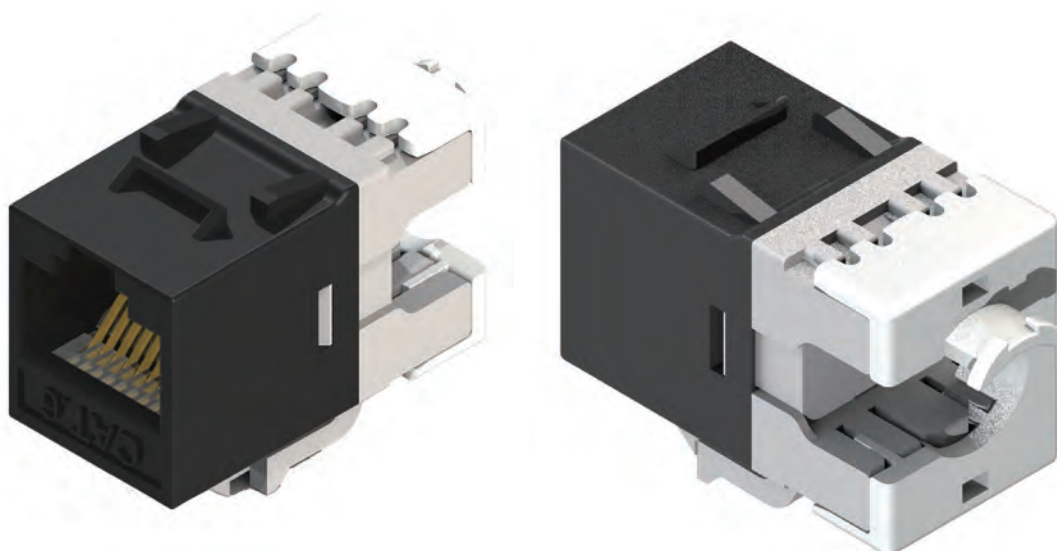
- L x W x H: 37.8 x 16.8 x 22.7
- Fits for 1U 24 port and 1U 48 port keystone panel

Suitable for easy crimping tool



3J01-L01-00001

180° Keystone Jack



- T568A & B wiring
- UL safety listed
- Copper wire gauge: 23AWG to 26AWG
- Cable outer diameter: 5.0 to 8.0mm

PART NO	DESCRIPTION
3J01-A01-00025	Cat. 6 component level, unshielded, Black
<ul style="list-style-type: none">• L x W x H: 31.6 x 14.5 x 21.8• Fits for 1U 24 port, 1U 48 port and 0.5U 24 port keystone panel	

90° Keystone Jack

- Full shielded by zinc alloy housing
- T568A & B wiring
- UL safety listed
- The range for copper wire AWG: 23AWG to 26AWG
- The range for cable outer diameter: 5.0 to 8.0mm
- Assembled by full automation line
- Fits 1U 24 port, 1U 48 port and 0.5U 24 port keystone panel



Unshielded punch-down type

PART NO	DESCRIPTION
3J01-A01-00035	Cat. 6 component level, White
3J01-A01-00026	Cat. 6A component level, White

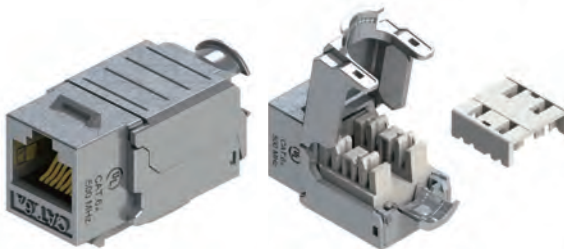
- L x W x H: 34.0 x 18.0 x 22.0mm
- Not for easy crimping tool



Full shielded punch-down type

PART NO	DESCRIPTION
3J01-A01-00005	Cat. 6 component level
3J01-A01-00027	Cat. 6A component level

- L x W x H: 37.0 x 18.0 x 22.0mm
- Not for easy crimping tool



Tool-less type

PART NO	DESCRIPTION
3J01-A01-00028	Cat. 6 component level, US type, Black
3J01-A01-00023	Cat. 6A component level, US type, Black
3J01-A01-00029	Cat. 6 component level, FS type
3J01-A01-00030	Cat. 6A component level, FS type

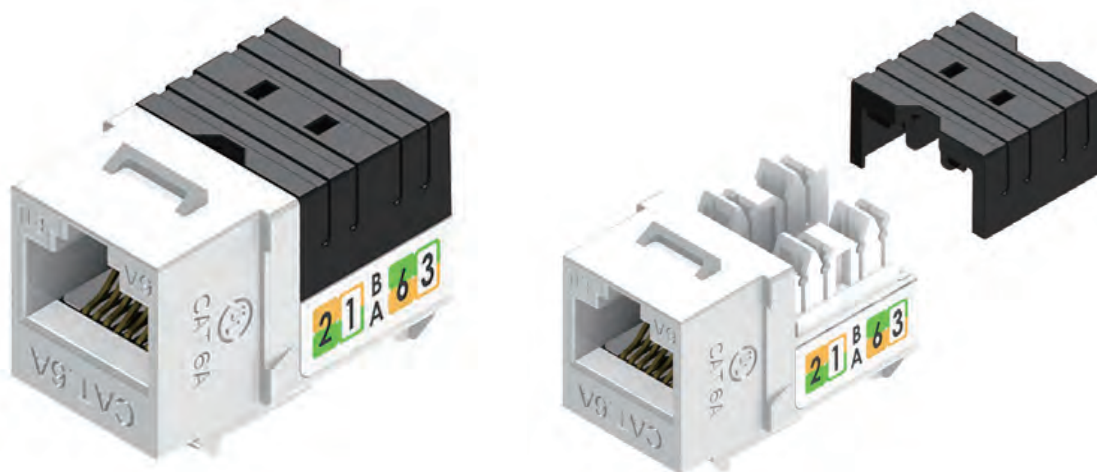
- L x W x H: 37.0 x 18.0 x 22.0mm
- Suitable for easy crimping tool

Suitable for easy crimping tool



3J01-L01-00002

Slim Type 90° Keystone Jack



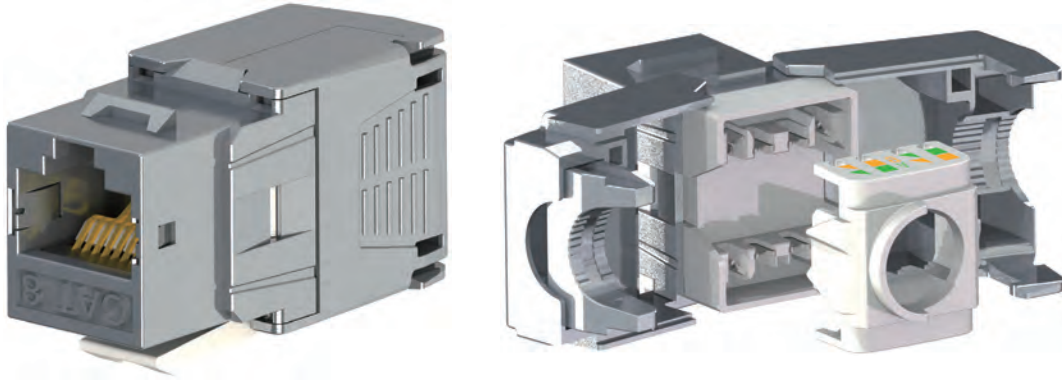
- T568A & B wiring
- L x W x H: 27.9 x 16.5 x 21.5mm
- Complied with the C6A component level requirement
- UL safety listed
- Cable wire gauge: 23AWG to 26AWG
- Cable outer diameter: 5.0 to 8.0mm
- Assembled by full automation line
- Fits for 1U 24 port, 1U 48 port and 0.5U 24 port keystone jack panel
- Fits for Decora wall plate

PART NO	DESCRIPTION
3J01-A01-00036	Slim type Cat.6 component level, unshielded, punch-down type, White
3J01-A01-00037	Slim type Cat.6A component level, unshielded, punch-down type, White

Full automation line



Full Shielded Keystone Jack



- Full shielded with zinc alloy housing
- T568A & B wiring
- C8 Channel Performance Verified
- Complied with the C6A component level
- Cable wire gauge: 22AWG to 26AWG
- Cable outer diameter: 6.0 to 9.0mm
- Suitable for the PoE plus (IEEE 802.3at) applications
- Reliable and stable quality by insert-molding and press-fit assembly process
- Fits 1U 24 port and 1U 48 port keystone panel

PART NO	DESCRIPTION
3J01-A01-00031	Cat. 6A component level performance, full shielded
3J01-A01-00032	Cat. 8 channel level performance, full shielded



3J01-L01-00003

Category 6A Patch Panel

90° FTP Punch Down



3J01-C01-00015

Product Feature

- Shielded housing provides against electro-magnetic interference (EMI)
- 24 port in one unit (1.75") height with jack shutter and ID stripes
- IDC termination with KRONE or 110 tool and universal color-coding for 568A and 568B

Electrical Characteristics

Dielectric Strength	1,000V RMS at 60Hz for 1 minute
Insulation Resistance	500MΩ minimum
Contact Resistance	2mΩ per contact
Temperature Range	-10°C to +60°C
Transmission Performance	TIA/EIA 568C.2 & ISO/IEC 11801

Mechanical Characteristics

Modular Connector	
RJ45 8-Pin Connector	FCC part 68, Subpart F and IEC-60603-7 compliant
Durability	750 mating cycles
Material	Phosphor Bronze with 50 micro-inch Gold over 100 micro-inch Nickel plated
IDC Connector	Insulation slicing of 22 to 26AWG
Connector	Phosphor Bronze with Tin Plated
IDC Body	UL 94V-2, plastic

Category 6A Patch Panel

90° FTP Punch Down



3J01-C01-00016

Product Feature

- Shielded housing provides against electro-magnetic interference (EMI)
- 48 port in one unit (1.75") height with flat jack and white silk-screening port number
- A double deck design facilitates two sets of 24 ports to be installed

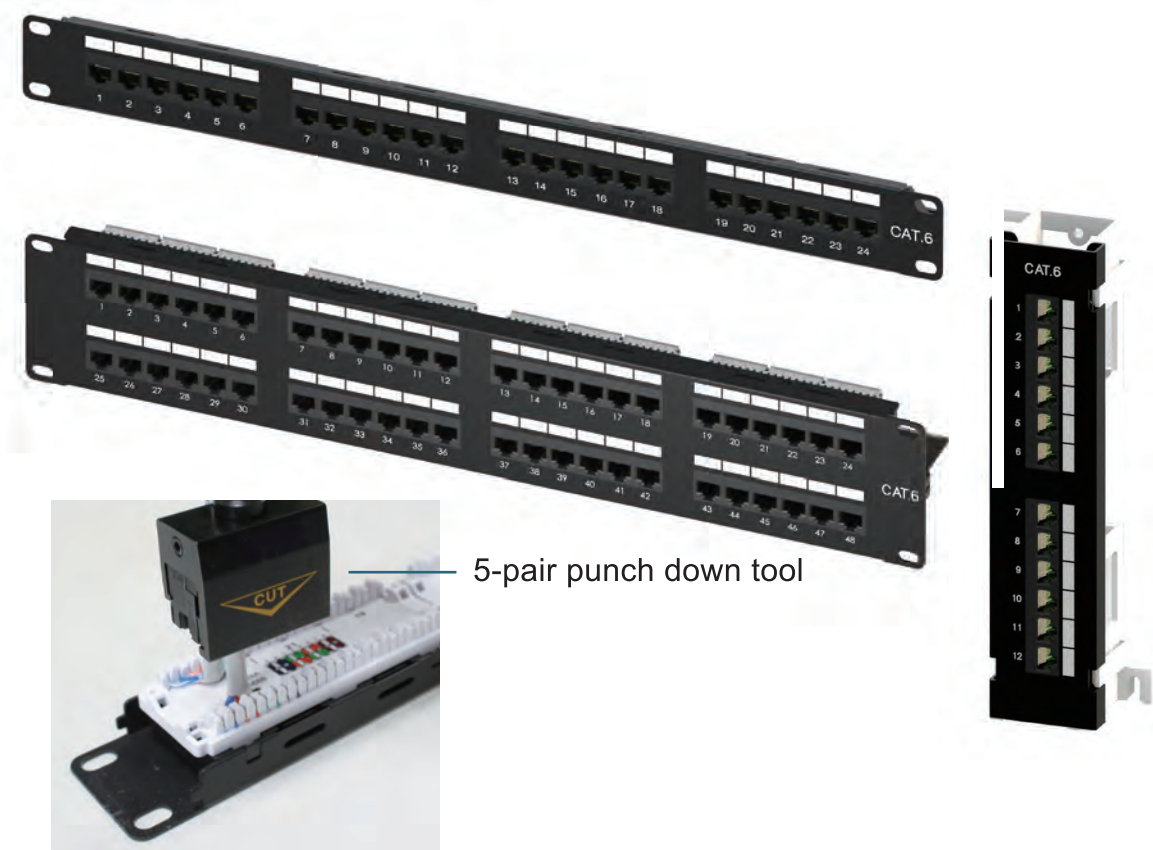
Electrical Characteristics

Dielectric Strength	1,000V RMS at 60Hz for 1 minute
Insulation Resistance	500MΩ minimum
Contact Resistance	2mΩ per contact
Temperature Range	-10°C to +60°C
Transmission Performance	TIA/EIA 568C.2 & ISO/IEC 11801

Mechanical Characteristics

Modular Connector	
RJ45 8-Pin Connector	FCC part 68, Subpart F and IEC-60603-7 compliant
Durability	750 mating cycles
Material	Phosphor Bronze with 50 micro-inch Gold over 100 micro-inch Nickel plated
IDC Connector	Insulation slicing of 22 to 26AWG
Connector	Phosphor Bronze with Tin Plated
IDC Body	UL 94V-2, plastic

Unshielded PCB Module Patch Panel



- High headroom on C6 permanent link performance
- UL safety listed
- Copper wire gauge: 23AWG to 26AWG
- Standard 110 IDC works with 5-pair punch down tool

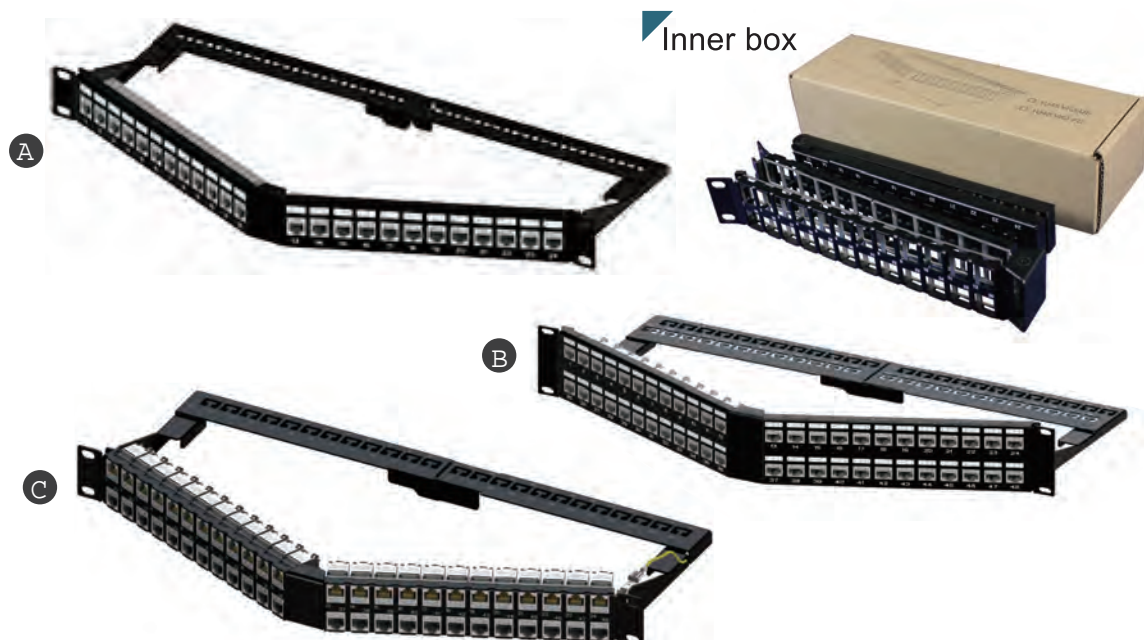
PART NO	DESCRIPTION
3J01-C01-00017	19 inch C6 24 port Patch panel, PCB module type, Unshielded
3J01-C01-00018	19 inch C6 48 port Patch panel, PCB module type, Unshielded
3J01-C01-00019	Mini vertical C6 12 port Patch panel, PCB module type, Unshielded

High Density Snap-in Keystone Panel



PART NO	DESCRIPTION
A	
3J01-C02-00012	19 inch 1U 48 port keystone panel, unshielded type
3J01-C02-00013	19 inch 1U 48 port keystone panel, shielded type
B	
3J01-C02-00014	19 inch 0.5U 24 port keystone panel, unshielded type
3J01-C02-00015	19 inch 0.5U 24 port keystone panel, shielded type
C	
3J01-C02-00016	19 inch 1U 24 port keystone panel, unshielded type
3J01-C02-00017	19 inch 1U 24 port keystone panel, shielded type

Foldable Angled Keystone Panel



- Saving 60% room for stock, package and transportation
- Front panel is optional with solid steel or plastic panel

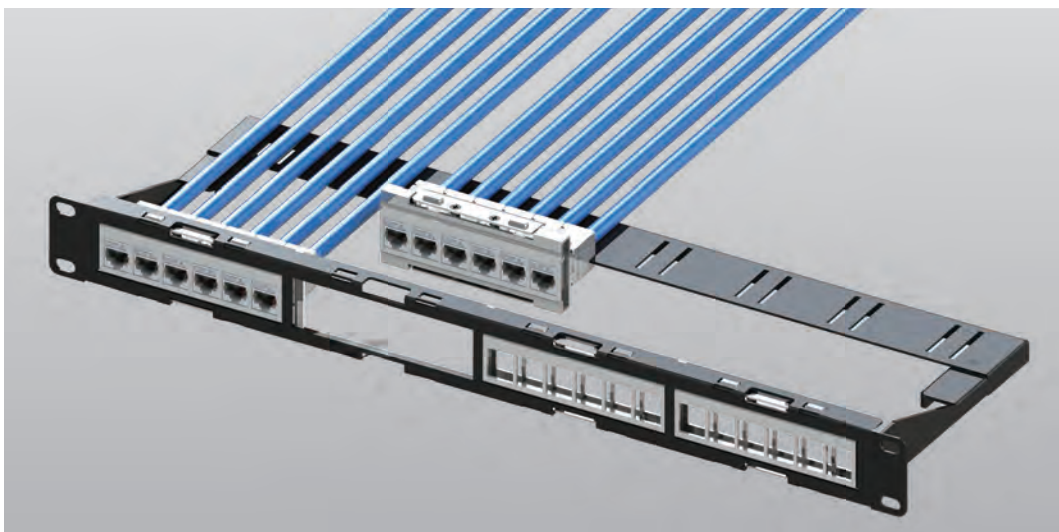
PART NO	DESCRIPTION
A	Inner box size L x W x H: 285 x 85 x 55mm
3J01-C02-00007	Foldable 1U 24 port keystone jack panel, unshielded type, solid steel front panel
3J01-C02-00001	Foldable 1U 24 port keystone jack panel, shielded type, solid steel front panel
B	Inner box size L x W x H: 285 x 85 x 110mm
3J01-C02-00004	Foldable 2U 48 port keystone jack panel, unshielded type, solid steel front panel
3J01-C02-00018	Foldable 2U 48 port keystone jack panel, shielded type, solid steel front panel
C	Inner box size L x W x H: 285 x 85 x 65mm
3J01-C02-00008	Foldable 1U 48 port keystone jack panel, unshielded type, solid steel front panel
3J01-C02-00009	Foldable 1U 48 port keystone jack panel, shielded type, solid steel front panel

Cassette Patch Panel

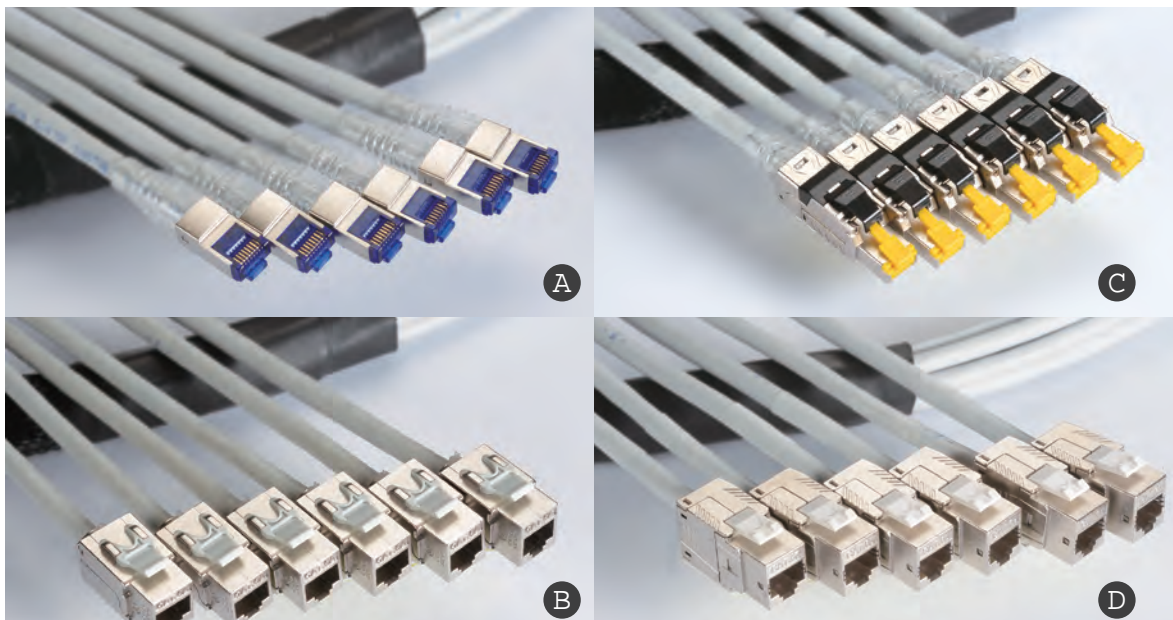


- 6port x 4, 24 port in 1unit
- Perfect grounding performance by spring contact design and nickel plated bracket
- Install bracket from the rear side of panel
- Black powder coating for panel and support-bar
- Foldable support bar design for saving packing size

PART NO	DESCRIPTION
3J01-C02-00019	6X4 24 port bracket panel, shielded type
3J01-C02-00020	6X4 24 port bracket panel, unshielded type



Copper Trunk Assembly



- Quality assurance by pre-terminated and 100% testing in factory.
- Private ID serial number is on each trunk cable
- 100% FLUKE tested each cord
- 100% CCD inspection on each crimped plug
- The dimension of plug meets the FCC part 68 and IEC60603-7 standard
- PVC(CM / CMR) and LSZH(IEC60332-1-2 / IEC 60332-3-24) jacket material available

DESCRIPTION

A	6ports Trunk assembly, C6A SFTP 23AWG solid wires cable, solid wire plug
B	6ports Trunk assembly, C6A SFTP 23AWG solid wires cable
C	6ports Trunk assembly, C6A SFTP 23AWG solid wires cable, field termination plug
	6ports Trunk assembly, C8 SFTP 22AWG solid wires cable, field termination plug
D	6ports Trunk assembly, C6A SFTP 23AWG solid wires cable
	6ports Trunk assembly, C8 SFTP 22AWG solid wires cable

* Length available: 5M to 90M

Hinged Angled Cable Management

1U



2U



PART NO

DESCRIPTION

3J01-D01-00004

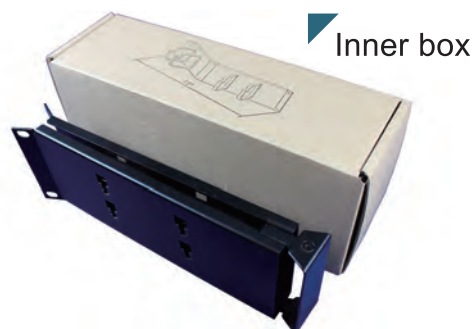
Foldable cable management,
1U

- Inner box size L x W x H: 285 x 85 x 55mm
- 2pcs/box

3J01-D01-00005

Foldable cable management,
2U

- Inner box size L x W x H: 285 x 85 x 110mm
- 2pcs/box



Flat Cable Management

1U



2U



PART NO

DESCRIPTION

3J01-D01-00001

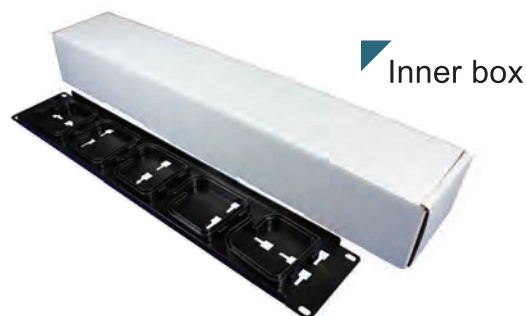
Flat cable management, 1U

- Inner box size L x W x H: 560 x 100 x 75mm
- 5pcs/box

3J01-D01-00003

Flat cable management, 2U

- Inner box size L x W x H: 560 x 100 x 75mm
- 5pcs/box



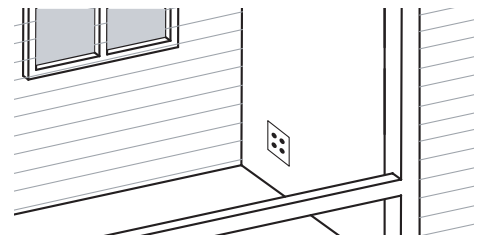
Rigid Industrial Ethernet Solution

Rigid Industrial Ethernet

Rigid Connectivity - protection, and prevent the network parts from moisture, dirt, and insects for quality connections.

Multiple applications

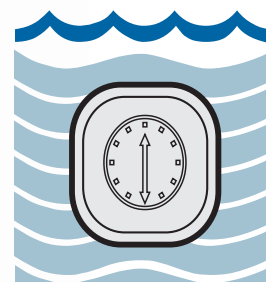
EXW Rigid Industrial Ethernet series provides you a solution to support multiple applications such as military networking, pharmaceutical laboratories or some units that are supposed to work under harsh environments where exposure to liquid or dust would likely occur.



Outdoor application with IP44 Compliant Faceplate

IP 67 Compliant

IP 67 Compliant. Cat.5e/ Cat.6 feed-through coupler, patch cord and assembly parts are now available. Prevented from temporary immersion for 30 min. in 1-meter depth of water.



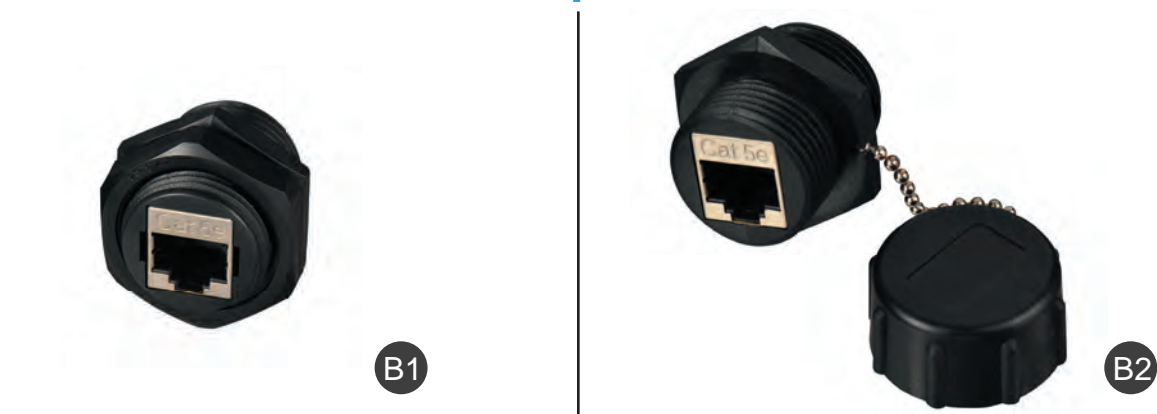
Rigid Industrial Ethernet Solution

Industrial Keystone Jack A



PART NO	IDC	DESCRIPTION
3D01-A02-00003	110	Cat.6 STP industrial keystone jack
A1 3D01-A02-00004	110	Cat.5e STP industrial keystone jack
A2 3D01-A02-00002	110	Cat.6 STP industrial keystone jack, w/ dust cap
3D01-A02-00001	110	Cat.5e STP industrial keystone jack, w/ dust cap

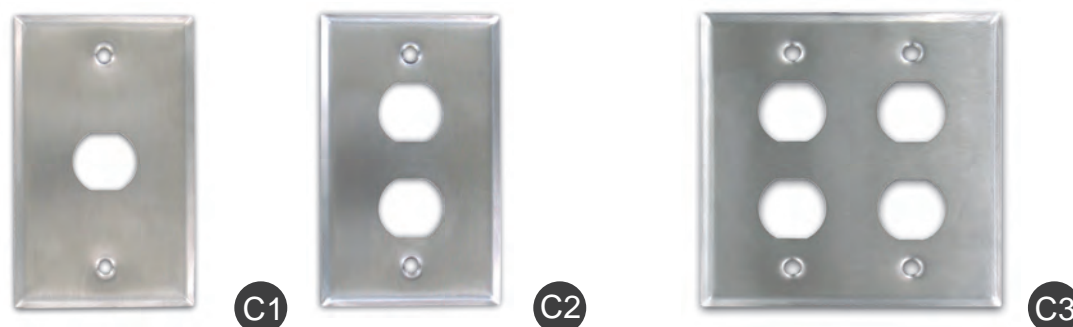
Industrial Bulkhead Coupler B



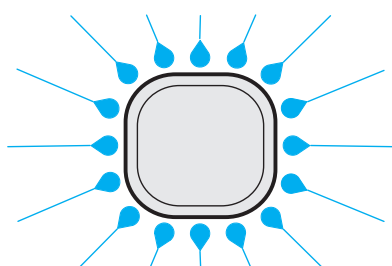
PART NO	DESCRIPTION
3D01-B02-00004	Cat.6 STP industrial bulkhead coupler
B1 3D01-B02-00005	Cat.5e STP industrial bulkhead coupler
3D01-B02-00002	Cat.6 STP industrial bulkhead coupler, w/ dust cap
B2 3D01-B02-00003	Cat.5e STP industrial bulkhead coupler, w/ dust cap

Rigid Industrial Ethernet Solution

Faceplate IP 44 Compliant ©



PART NO	PORT	DESCRIPTION
©1 3D01-H02-00001	1	Single gang faceplate, stainless steel
©2 3D01-H02-00002	2	Single gang faceplate, stainless steel
©3 3D01-H02-00003	4	Double gang faceplate, stainless steel



FEATURES

- IP 44 compliant. Prevented from splashed water from all direction.

Surface Mounting Box IP 67 Compliant ©



PART NO	DESCRIPTION
3D01-J03-00001	Industrial surface mounting box

Rigid Industrial Ethernet Solution

Patch Cord E



E1



E2

Features

Protective Cap for Un-used Connector in harsh environment.



PART NO	DESCRIPTION
60SSBKBD0150-XXX-IND01	Cat.6 STP industrial patch cord
E1 5EFTBKBD0150-XXX-IND01	Cat.5e STP industrial patch cord
E2 60SSBKBD0150-XXX-IND	Cat.6 STP industrial patch cord, w/ Protective
5EFTBKBD0150-XXX-IND	Cat.5e STP industrial patch cord, w/ Protective

[XXX] = Length

Accessory F



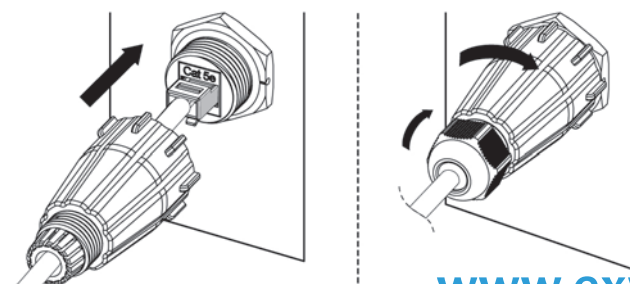
PART NO	DESCRIPTION
3SRB290BK-000	Waterproof assembly kit for outdoor cable

APPLICATION

1. Strip the cable jacket approximately 30 mm, spread each pair and crimp the modular plug.



2. Mate the modular plug with socket, and screw tight the body. The mating connection is waterproof.



Fast Lead Time

Offer one week lead time for fiber patch cord, from order releasing to goods received by customers, you are free of stock pressure, get better cash flow.



Competitive Price

Compare with same quality competitors,
Offer absolutely competitive prices to our customers.



Wire Excellence

EXCELLENCE WIRE IND. CO., LTD.

Email: service@exw.com.tw

Phone: +886-3-3222120

Fax: +886-3-3525455

Address No.13, Lane 39, Sec.2, Chang An Rd.,
Luchu Dist., Taoyuan City 33852, Taiwan

China factory No.651, Hengshanxi Road, Bei
Lun, Ningbo Zhejiang, China 315800



<http://www.exw.com.tw/>
<http://exwtw.en.alibaba.com/>