



HB42 VENUS

Ball-proof and Low UGR for indoor sports hall

A integrating unique design and function LED lighting solution



170 lm/W



IP66



IK09



UGR<19



ZHAGA



BALL test passed in TUV lab

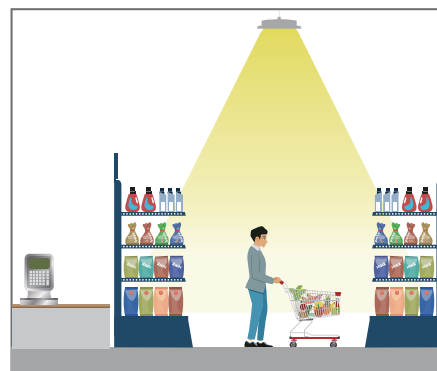
In sports halls and gymnasiums, fast-moving balls are used, the kinetic energy of which can destroy electrical equipment, so that luminaires and their accessories must be ball-proof.

HB42 passed ball test in compliance with the standard of **IDIN 18032-3 "Halls for gymnastics and games, testing of ball impact resistance"** and in **DIN 57710-13 "Luminaires with operating voltage below 1,000 V, ball impact resistant luminaires"**.



UGR less than 19 CIE190: 2010 standard

Multiple-LED-in-one & CONVEX LENS design reduce the glare effectively. Low UGR brings better visual experience for players.



H01901

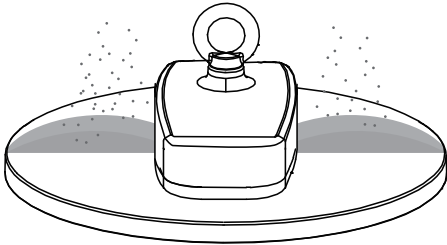


Anti-glare
UGR<19

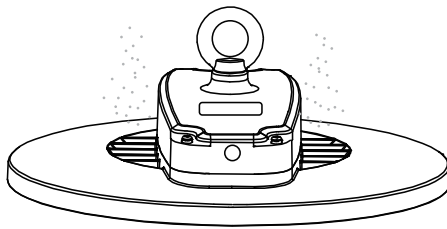
CIE 190:2010

Stylish design with smooth housing
and easy to clean

Common highbay light : Dust accumulation
Venus: Dust-proof

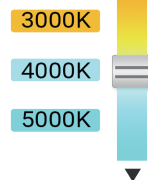


VS

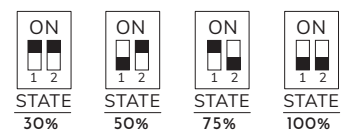


3 CCT selectable + 4 Power selectable optional

CCT and power adjustable on one fixture, one SKU has multiple CCT options, flexible inventory can meet projects in quick response. .



3 CCT Selectable



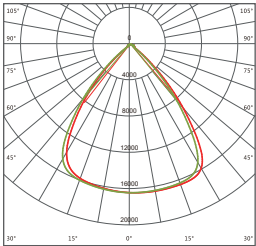
4 Power Selectable

HB42 Product Range

Model	HB42-100	HB42-120	HB42-150	HB42-200
Power Consumption (±10%)	100W	120W	150W	200W
Input Voltage	120-277 Vac, 50/ 60 Hz			
Luminous Flux (±10%)	17000lm	20400lm	25500lm	34000lm
Emcacy (4000K Ra80)	170lm/W			
Beam Angle	H08801			H01901, H01902, H01903
Control	Dimmable, DALI 2.0, Microwave Sensor, Zigbee Wireless Control			
CCT & CRI	5000K (3000K, 4000K optional), Ra80			
Product Dimension(mm)	ø338x144			ø400x162
Export Carton Size(mm)	400x400x190			470x470x225
Protection	IP66, IK09			
Operating Temp	-30℃ to + 50(120-200Vac@Ta=45)			
Warranty	5 years			

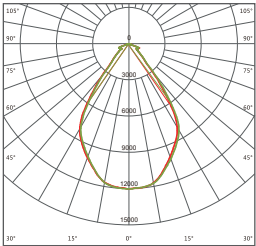
Photometric Diagrams

100W-150W beam angle

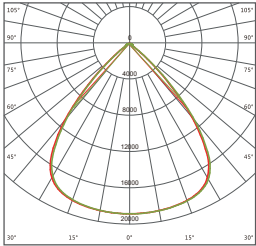


H08801(85°)

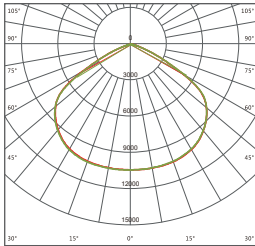
200W beam angle



H01902(65°)



H01901(85°)



H01903(120°)

Mounting Options



Loop mounting



Ceiling mounting