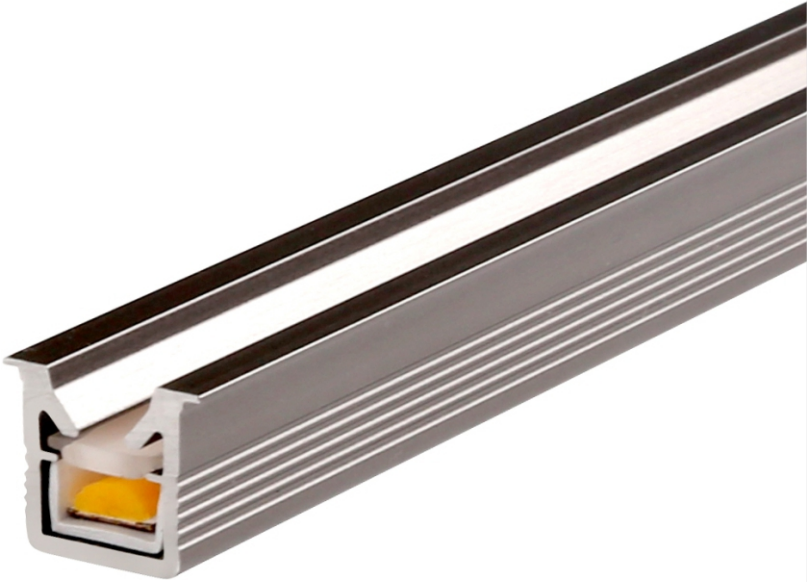
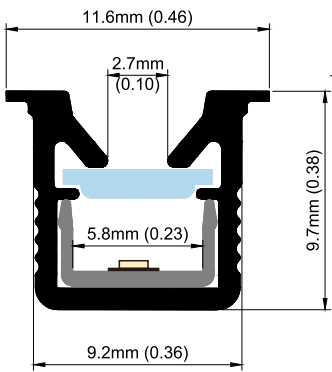


AH1010



Profile for cabinet

- Anti-glare design , 45° beam angle
- Slim size 10*10mm , can fit any kinds of cabinet perfectly
- Dots free lighting effect , uniform and soft



Specifications

Material	AL6063-T5
Finish	Iron grey
Diffuser	PC milky
Dimension	W11.6 * H9.7mm
Installation	Recessed mount
Stock length	2 m



Accessories:



Endcap



Mounting clip

Light source

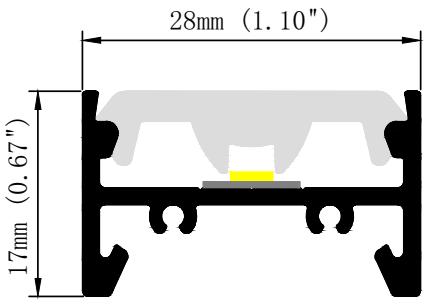
Model no.	LEDs/meter	Voltage	Power	Lumen	CRI	FPC width	Cutting unit
COB-504-5mm	504LEDs	DC12V/24V	6W/m	504LM/m	>90	5mm	7.94mm/12V 13.89mm/24V

H2817



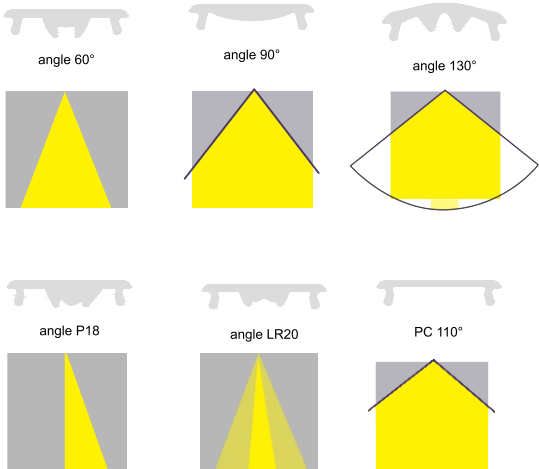
Surface mount profile

- One profile with 6 optic lens for choices
- Various beam angle to achieve different lighting effect
- Ideal for jewelry display shelf ,wine cabinet,etc

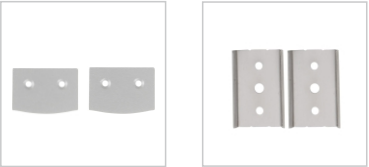


Specifications

Material	AL6063-T5
Finish	Silver/Black/white
Diffuser	PMMA optical lens
Dimension	W28 * H17mm
Installation	Surface mount
Stock length	2 m



Accessories:



Endcap Mounting clip

Light source

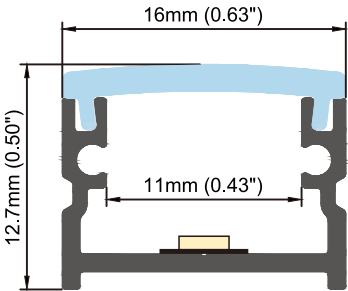
Model no.	LEDs/meter	Voltage	Power	Lumen	CRI	FPC width	Cutting unit
FL2835-120-8mm	120LEDs	12V/24V	13W/m	1300LM/m	>80/90	8mm	25mm/12V 50mm/24V
FL2835-120-10mm	182LEDs	24V	15W/m	1300LM/m	>80/90	10mm	38.6mm/24V

PA1612



Surface mount profile

- Slim design profile
- Surface mounted with clip
- Used for cabinet, kitchen cabinet, wardrobe, etc.

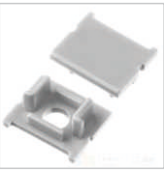


Specifications

Material	AL6063-T5
Finish	Silver/Black
Diffuser	PC milky/Black
Dimension	W16 * H12mm
Installation	Surface mount
Stock length	2 m



Accessories:



Endcap



Mounting clip

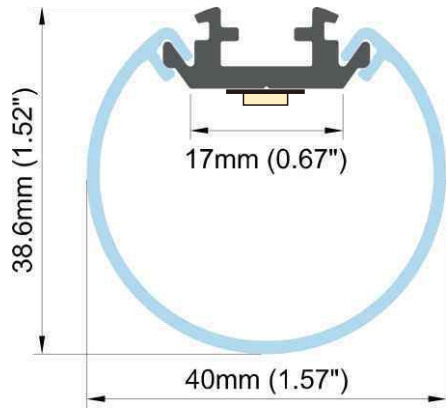
Light source

Model no.	LEDs/meter	Voltage	Power	Lumen	CRI	FPC width	Cutting unit
FL2835-120-8mm	120LEDs	12V/24V	13W/m	1300LM/m	>80/90	8mm	25mm/12V 50mm/24V

Round40

Architectural LED profile

- Wide beam angle-270 degree
- Uniform without any led dots and shadow
- Hanging installation



Specifications

Material	AL6063-T5
Finish	Silver/Black/White
Diffuser	PC milky
Dimension	Dia.40mm
Installation	Suspended
Stock length	2 m



Accessories:



Endcap



Suspension kit

Light source

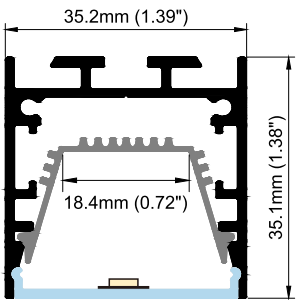
Model no.	LEDs/meter	Voltage	Power	Lumen	CRI	FPC width	Cutting unit
FL2835-240-15mm	240LEDs	24V	20W/m	2085LM/m	>80/90	15mm	25mm

KA3535-A



Architectural profile

- Two-pieces design
- Screwless endcaps providing smooth and elegant finish
- Equipped with reflector enhances lighting performance



Specifications

Material	AL6063-T5
Finish	Silver/Black/white
Diffuser	PC milky
Dimension	W35 * H35mm
Installation	Surface mount/suspended
Stock length	2 m



Accessories:



Endcap



Mounting clip

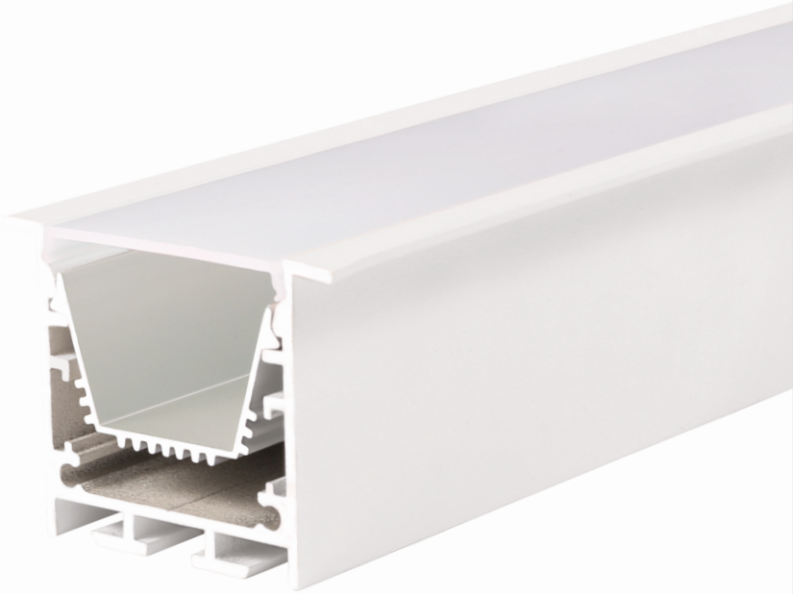


Suspension kit

Light source

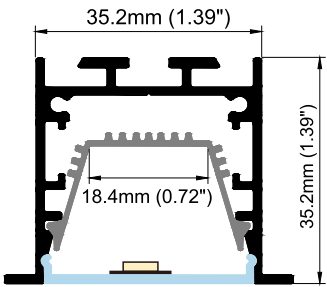
Model no.	LEDs/meter	Voltage	Power	Lumen	CRI	FPC width	Cutting unit
FL2835-120-8mm	120LEDs	DC12V/24V	13W/m	1300LM/m	>80/90	8mm	25mm/12V 50mm/24

KA3535-R



Architectural profile

- Two-pieces design
- Screwless endcaps providing more smooth and elegant finish
- Equipped with reflector enhances lighting performance



Specifications

Material	AL6063-T5
Finish	Silver/Black/white
Diffuser	PC milky
Dimension	W35 * H35mm
Installation	Recessed
Stock length	2 m



Accessories:



Endcap



Spring clip

Light source

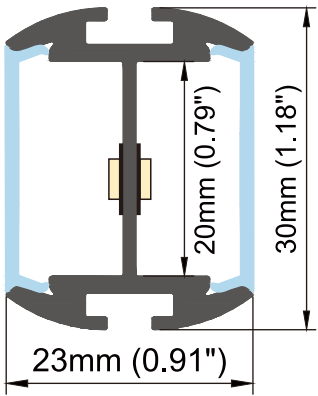
Model no.	LEDs/meter	Voltage	Power	Lumen	CRI	FPC width	Cutting unit
FL2835-120-8mm	120LEDs	DC12V/24V	13W/m	1300LM/m	>80/90	8mm	25mm/12V 50mm/24V

H2330



Architectural profile

- Both the left and the right can glow
- Suspended with two directions lighting.
- It can be bent into circles or other shapes.



Specifications

Material	AL6063-T5
Finish	Silver/Black
Diffuser	PC milky
Dimension	W23* H30mm
Installation	Suspended
Stock length	2 m



Accessories:



Endcap



Suspension kit

Light source

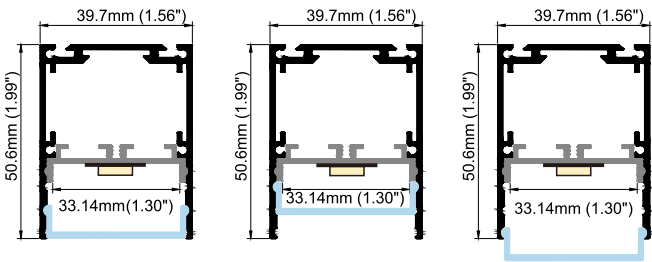
Model no.	LEDs/meter	Voltage	Power	Lumen	CRI	FPC width	Cutting unit
FL2835-120-8mm	120LEDs	DC12V/24V	13W/m	1300LM/m	>80/90	8mm	25mm/12V 50mm/24V
FL2835-240-15mm	240LEDs	DC24V	20W/m	2085/lm	>80/90	15mm	25mm



KA4050-A

Profile for driver built-in

- Diffuser can be installed at 3 different heights
- Built-in linear power supply,slim and beautiful
- It can be suspended or surface mounted



Specifications

Material	AL6063-T5
Finish	Silver/Black/White
Diffuser	PC white
Dimension	W40* H50mm
Installation	Surface mount/suspended
Stock length	2 m



Accessories:



Endcap



Mounting clip



Suspension kit

Light source

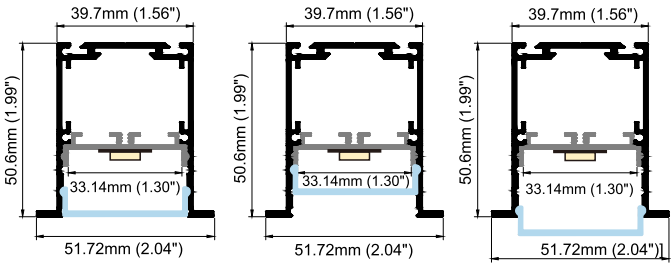
Model no.	LEDs/meter	Voltage	Power	Lumen	CRI	FPC width	Cutting unit
FL2835-120-8mm	120LEDs	DC12/24V	13W/m	1300LM/m	>80/90	8mm	25mm/12V 50mm/24V

KA4050-R



Profile for driver built-in

- Diffuser can be installed at 3 different heights
- Built-in linear power supply, slim and beautiful
- It can be recessed mounted



Specifications

Material	AL6063-T5
Finish	Silver/Black/White
Diffuser	PC white
Dimension	W40* H50mm
Installation	Recessed
Stock length	2 m



Accessories:



Endcap

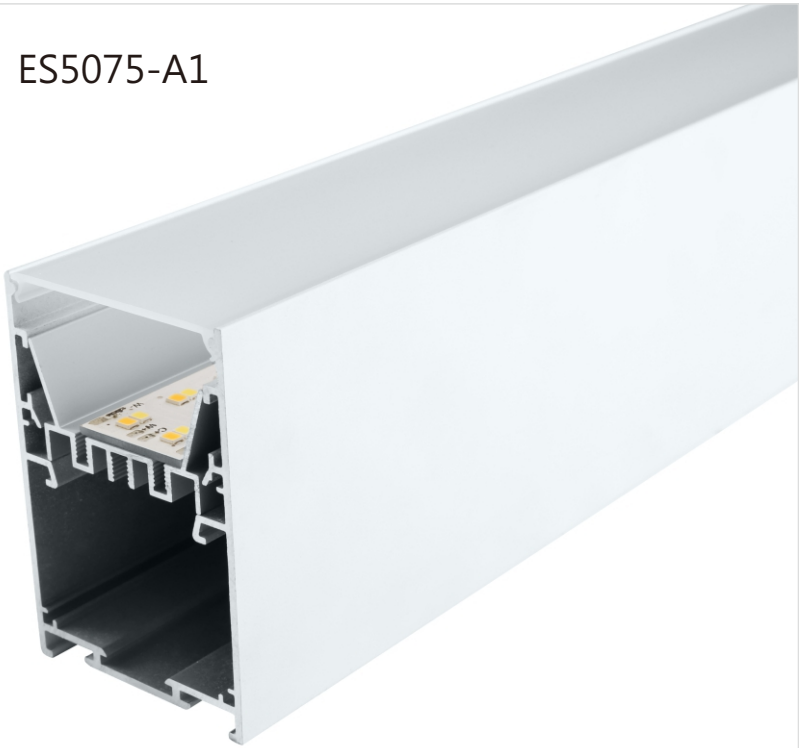


Bracket

Light source

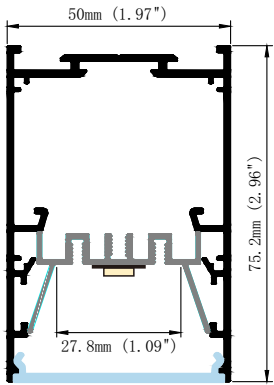
Model no.	LEDs/meter	Voltage	Power	Lumen	CRI	FPC width	Cutting unit
FL2835-120-8mm	120LEDs	DC12/24V	13W/m	1300LM/m	>80/90	8mm	25mm/12V 50mm/24V

ES5075-A1



Profile for driver built-in

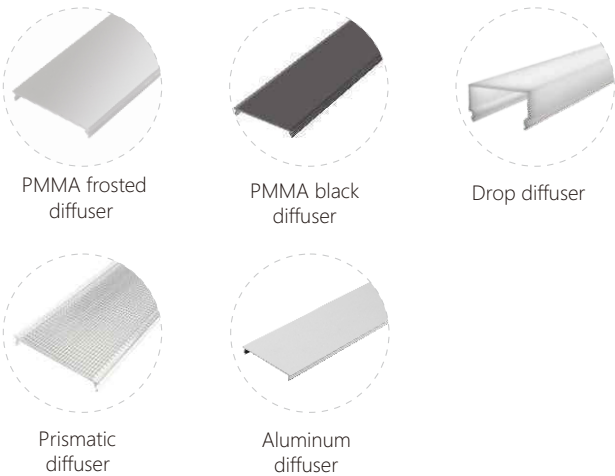
- Driver built-in design
- Visual Comfort with micro-prism diffuser, low-glare
- Screw-less endcap without light leakage



Specifications

Material	AL6063-T5
Finish	Silver/Black/white
Diffuser	PMMA/PC
Dimension	W50* H75mm
Installation	Suspended/Surface mount
Stock length	2.5m

Diffuser options:



Accessories



Light source

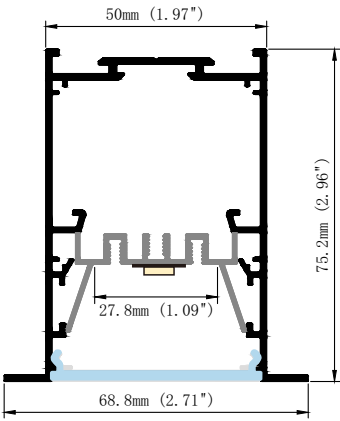
Model no.	LEDs	Voltage	Power	Efficiency	CRI	Size	Cutting unit
R1200-24mm	Samsung/300LEDs	27~32V	Max.54w	~150LM/w	>80/90	1200*24mm	40mm

ES5075-R1



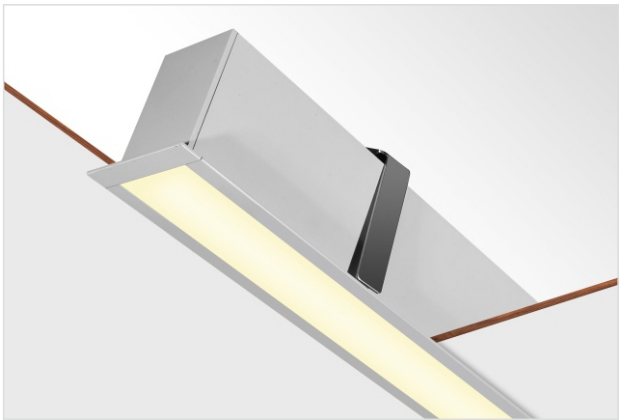
Profile for driver built-in

- Driver built-in design
- Visual Comfort with micro-prism diffuser, low-glare
- Recessed mounted with bracket







Specifications

Material	AL6063-T5
Finish	Silver/Black/white
Diffuser	PMMA/PC
Dimension	W68.8* H75mm
Installation	Recessed
Stock length	2.5m



Accessories:

			
Endcap	Internal clip	Safety cord	Bracket

Light source

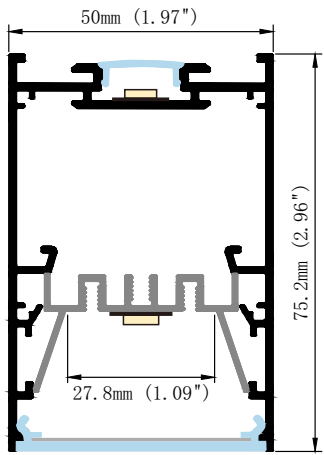
Model no.	LEDs	Voltage	Power	Efficiency	CRI	Size	Cutting unit
R1200-24mm	Samsung/300LEDs	27~32V	Max.54w	~150LM/w	>80/90	1200*24mm	40mm

ES5075-D1



Profile for driver built-in

- Driver built-in design
- Visual Comfort with micro-prism diffuser, low-glare
- Direct&indirect lighting



Specifications

Material	AL6063-T5
Finish	Silver/Black/white
Diffuser	PMMA /PC
Dimension	W50* H75mm
Installation	Suspended
Stock length	2.5m



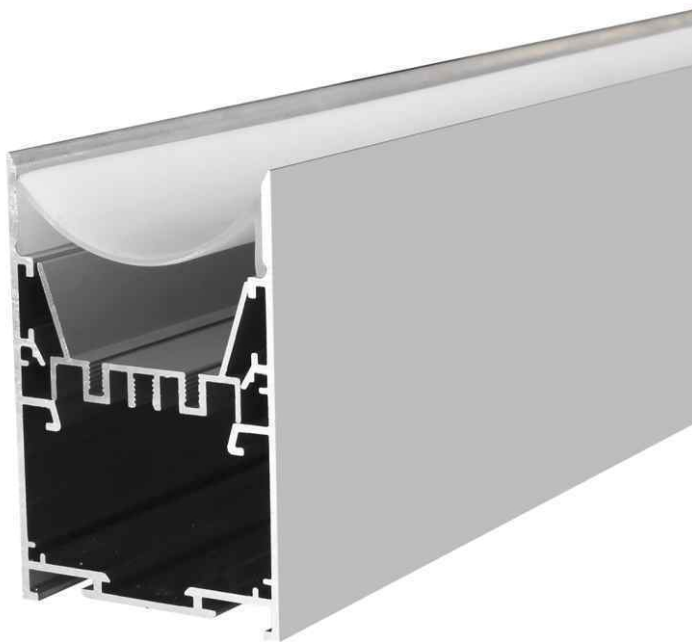
Accessories:



Light source

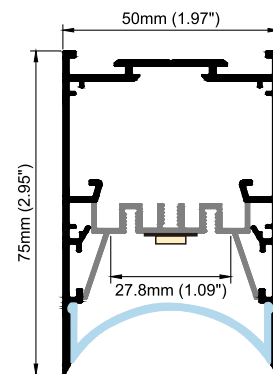
Model no.	LEDs	Voltage	Power	Efficiency	CRI	Size	Cutting unit
R1200-24mm (direct)	300LEDs	27~32V	Max.54w	~150LM/w	>80/90	1200*24mm	40mm
R1200-12mm (indirect)	150LEDs	27-32V	Max.54w	~150LM/w	>80/90	1200*12mm	80mm

ES5075-C



Profile for driver built-in

- Low glare design
- Incurved diffuser ,unique and fashion
- Screw-less endcap without light leakage



Specifications

Material	AL6063-T5
Finish	Silver/Black/white
Diffuser	PC white
Dimension	W50* H75mm
Installation	Suspended/Surface mount
Stock length	2.5m



Accessories:



Light source

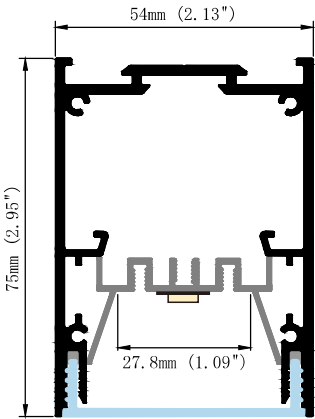
Model no.	LEDs	Voltage	Power	Efficiency	CRI	Size	Cutting unit
R1200-24mm	Samsung/ 300LEDs	27~32V	Max.54w	~150LM/w	>80/90	1200*24mm	40mm



IP5475

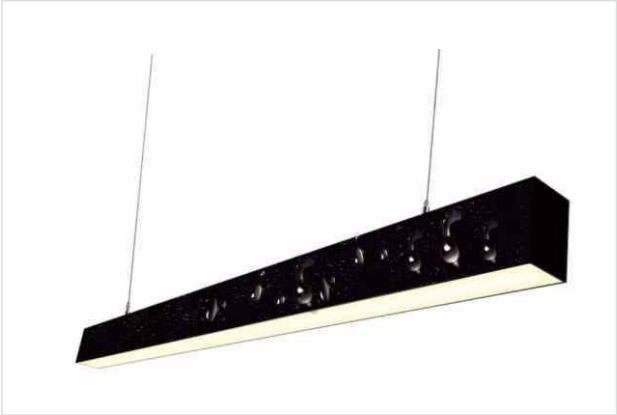
Waterproof LED profile

- Pendantlinear profile with IP65 rating
- Heavy endcap and aluminum profile
- Ideal for car park,warehouse,humid and wet areas



Specifications

Material	AL6063-T5
Finish	Silver/Black/white
Diffuser	PC white
Dimension	W54* H75mm
Installation	Suspended/Surface mount
Stock length	2.5m



Accessories:

Endcap

Internal clip

Safety cord

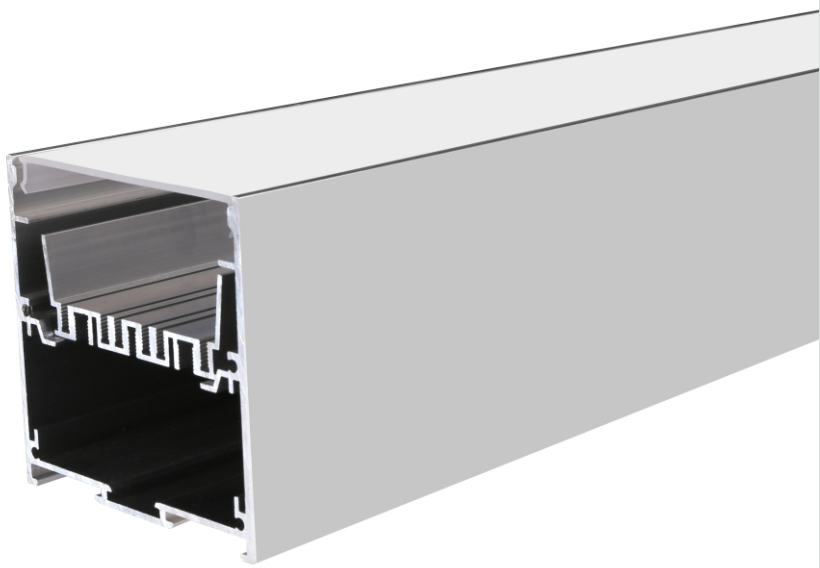
Outer clip

Suspension kit

Light source

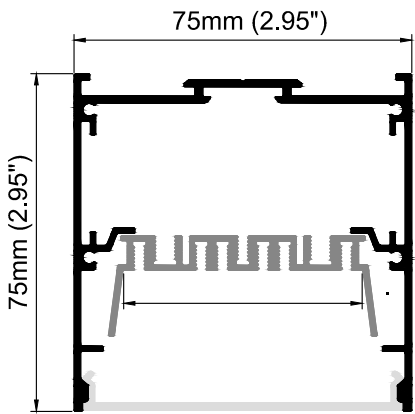
Model no.	LEDs	Voltage	Power	Efficiency	CRI	Size	Cutting unit
R1200-24mm	Samsung/300LEDs	27~32V	Max.54w	~150LM/w	>80/90	1200*24mm	40mm

ES7575-A1



Profile for driver built-in

- Universal size with driver built-in design
- support single run and Continuous run
- Fast and Easy Installation and Maintenance



Specifications

Material	AL6063-T5
Finish	Black/White/Silver
Diffuser	PMMA/PC
Dimension	W75 * H75mm
Installation	Suspended/surface mount
Stock length	2.5m



Accessories



Endcap



Internal clip



Outer clip



Suspension
kit

Light source

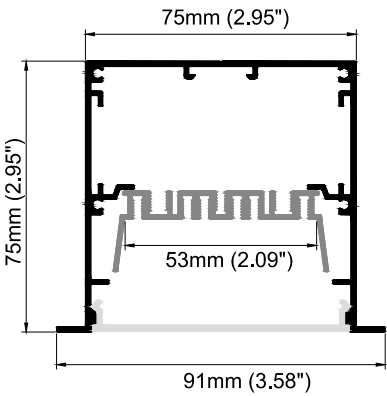
Model no.	LEDs	Voltage	Power	Efficiency	CRI	Size	Cutting unit
R1200-24mm	Samsung/ 300LEDs	27~32V	Max.54w	~150LM/w	>80/90	1200*24mm	40mm

ES7575-R1



Profile for driver built-in

- Universal size with driver built-in design
- support single run and Continuous run
- Fast and Easy Installation and Maintenance



Specifications

Material	AL6063-T5
Finish	Black/White/Silver
Diffuser	PMMA/PC
Dimension	W75 * H75mm
Installation	Recessed
Stock length	2.5m



Accessories



Endcap



Internal clip

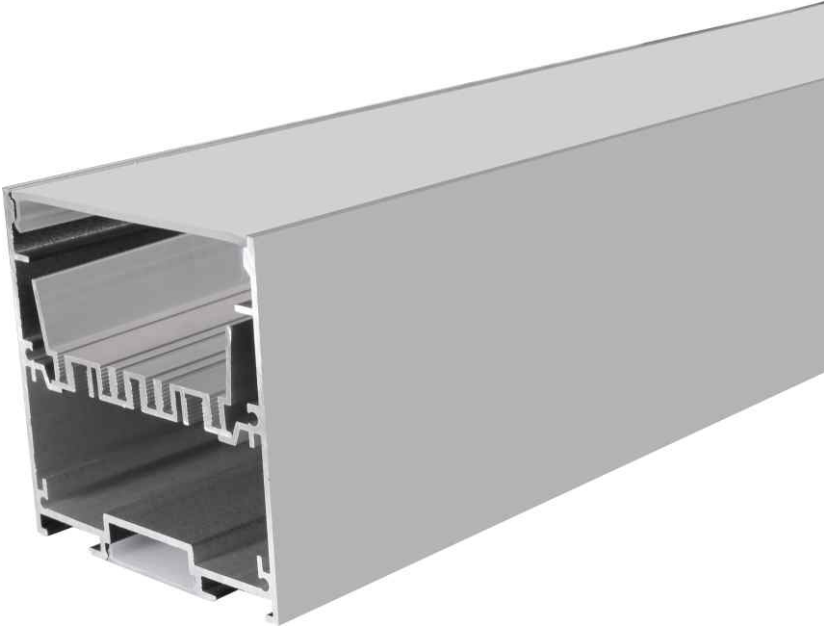


Bracket

Light source

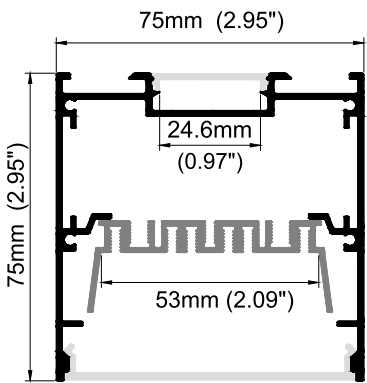
Model no.	LEDs	Voltage	Power	Efficiency	CRI	Size	Cutting unit
R1200-24mm	Samsung/300LEDs	27~32V	Max.54w	~150LM/w	>80/90	1200*24mm	40mm

ES7575-D1



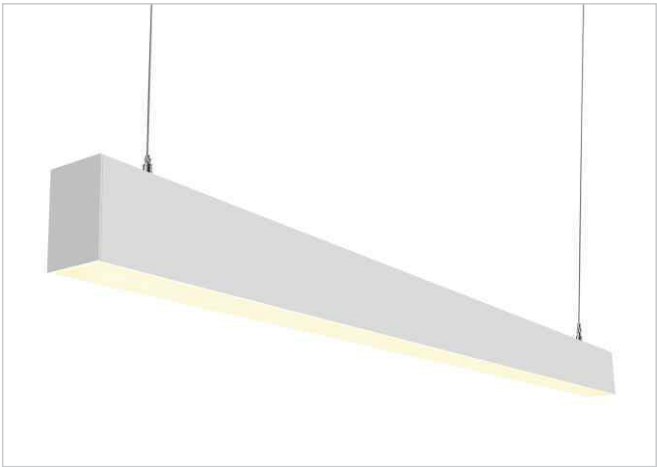
Profile for driver built-in

- Universal size with driver built-in design
- support single run and Continuous run
- Fast and Easy Installation and Maintenance
- Direct&indirect lighting

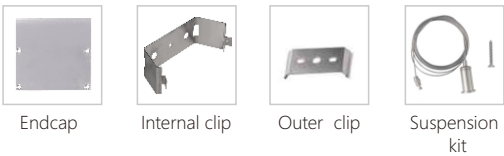


Specifications

Material	AL6063-T5
Finish	Black/White/Silver
Diffuser	PMMA/PC
Dimension	W75 * H75mm
Installation	Suspended
Stock length	2.5m



Accessories



Light source

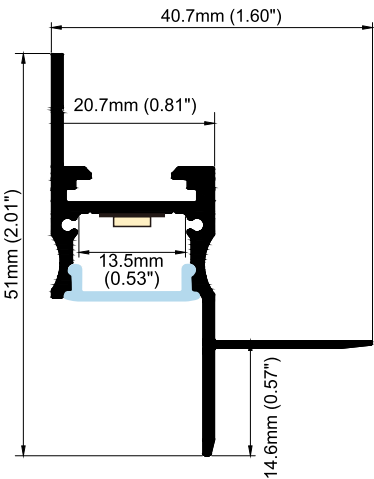
Model no.	LEDs	Voltage	Power	Efficiency	CRI	Size	Cutting unit
R1200-24mm	Samsung/300LEDs	27~32V	Max.54w	~150LM/w	>80/90	1200*24mm	40mm

TL2151-V2



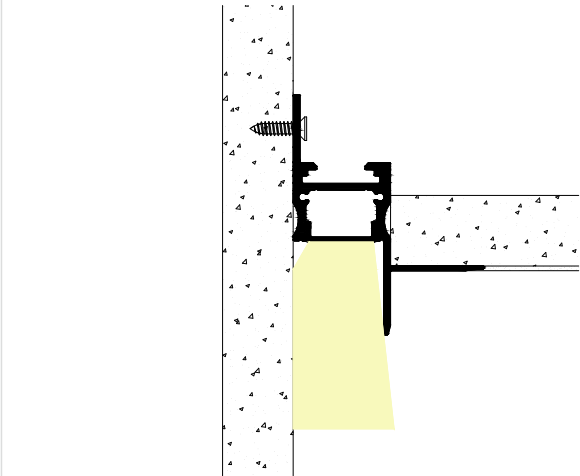
Profile for drywall

- Plastered in the ceiling,conceal the aluminum profile
- Installation ways : wall washer or light up the ceiling
- Anti glare indirect lighting



Specifications

Material	AL6063-T5
Finish	White/Black
Diffuser	PC milky
Dimension	W40.7* H51mm
Installation	Recessed in ceiling
Stock length	2m



Accessories



Endcap

Light source

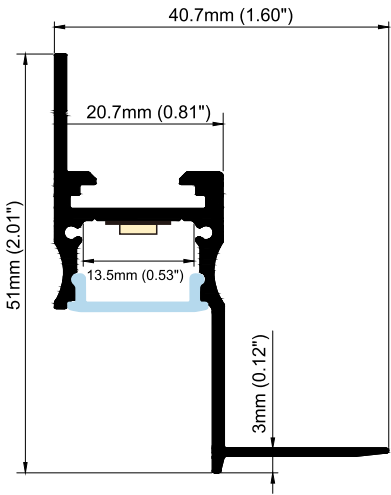
Model No.	LEDs/meter	Voltage	Power	Lumen	CRI	Size	Cutting unit
FL2835-120-8mm	120LEDs	DC12V/24V	13W/m	1300LM/m	>80/90	8mm	25mm/12V 50mm/24V

TL2151



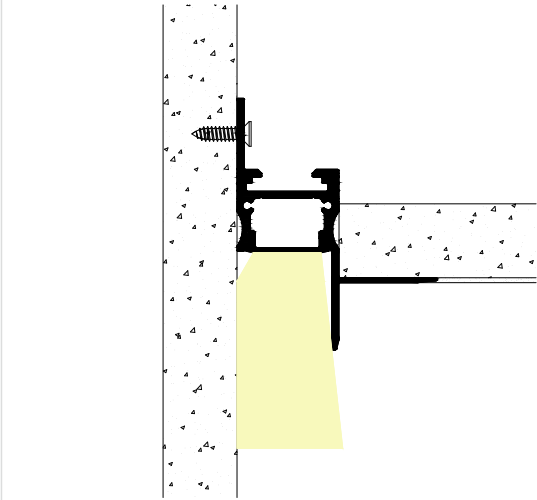
Profile for drywall

- Plastered in the ceiling,conceal the aluminum profile
- Installation ways : wall washer or light up the ceiling
- Anti glare indirect lighting



Specifications

Material	AL6063-T5
Finish	White/Black
Diffuser	PC milky
Dimension	W40.7* H51mm
Installation	Recessed in ceiling
Stock length	2m



Accessories

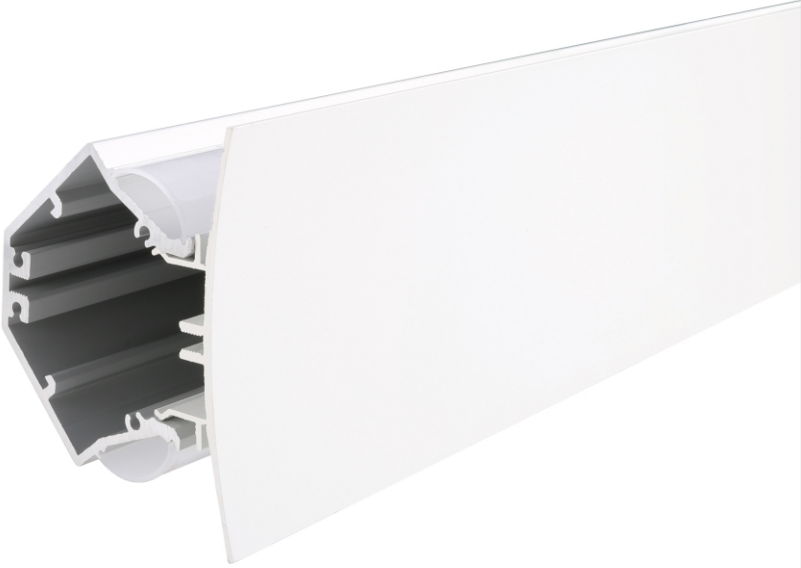


Endcap

Light source

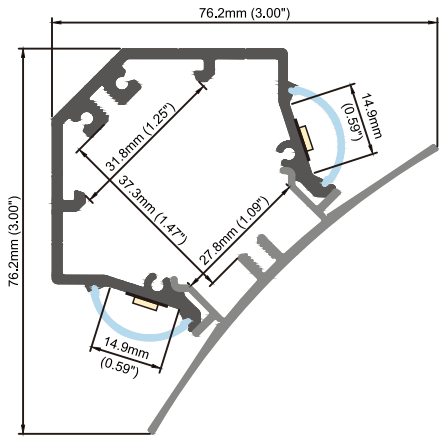
Model No.	LEDs/meter	Voltage	Power	Lumen	CRI	Size	Cutting unit
FL2835-120-8mm	120LEDs	DC12V/24V	13W/m	1300LM/m	>80/90	8mm	25mm/12V 50mm/24V

LG7676



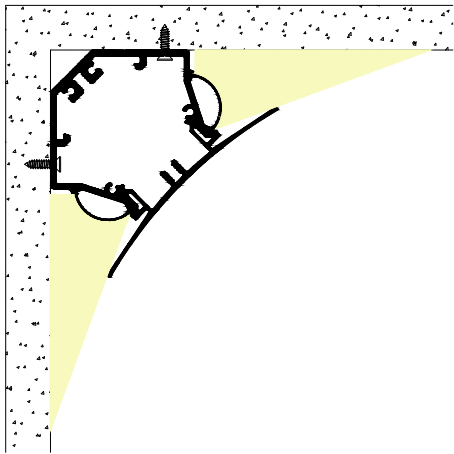
Profile for drywall

- Plastered in the corner of ceiling
- Ideal for Low ceilings , newly built construction projects
- No slot, no suspended ceiling, easy installation
- Light up wall and ceiling



Specifications

Material	AL6063-T5
Finish	White
Diffuser	PC milky
Dimension	W76* H76mm
Installation	Surface mounted
Stock length	2m



Accessories



Endcap

Light source

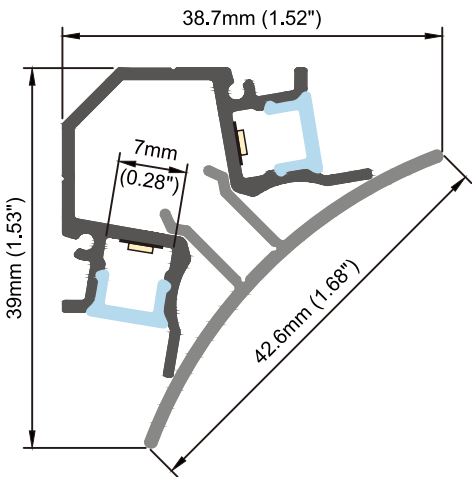
Model No.	LEDs/meter	Voltage	Power	Lumen	CRI	FPC width	Cutting unit
FL2835-120-8mm	120LEDs	DC12V/24V	13W/m	1300LM/m	>80/90	8mm	25mm/12V 50mm/24V

LG3939



Profile for drywall

- Plastered in the corner of ceiling
- Ideal for Low ceilings , newly built construction projects
- No slot, no suspended ceiling, easy installation
- Light up wall and ceiling



Specifications

Material AL6063-T5

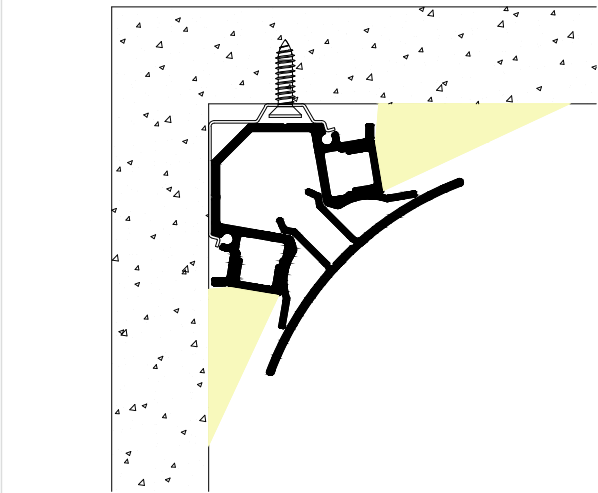
Finish White

Diffuser PC milky

Dimension W39* H39mm

Installation Surface mounted

Stock length 2m



Accessories



Endcap



Clip

Light source

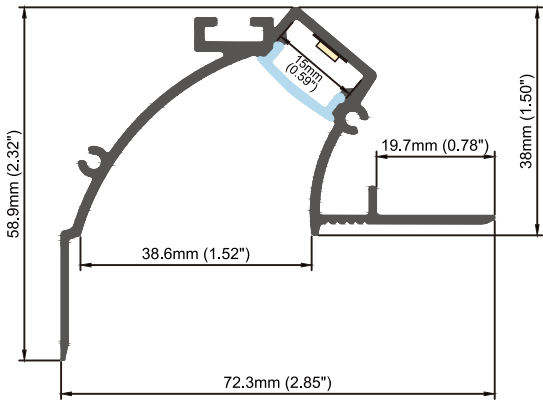
Model No.	LEDs/meter	Voltage	Power	Lumen	CRI	FPC width	Cutting unit
FL2835-120-5mm	120LEDs	DC12V/24V	7.6W/m	700LM/m	>80/90	5mm	25mm/12V 50mm/24V

TL7259



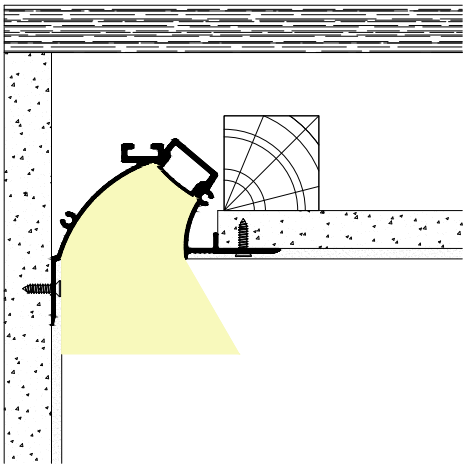
Profile for drywall

- Plastered in the ceiling, conceal the aluminum profile.
- The regressed diffuser reduces the light glare.
- Light source is invisible, low glare without discomfort.



Specifications

Material	AL6063-T5
Finish	Silver/Black/White
Diffuser	PC milky
Dimension	W72* H59mm
Installation	Recessed in ceiling
Stock length	2m



Accessories



Endcap

Light source

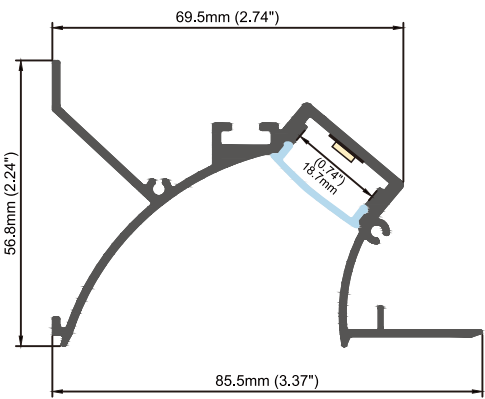
Model No.	LEDs/meter	Voltage	Power	Lumen	CRI	FPC width	Cutting unit
FL2835-120-8mm	120LEDs	DC12V/24V	13W/m	1300LM/m	>80/90	8mm	25mm/12V 50mm/24V

TL8557



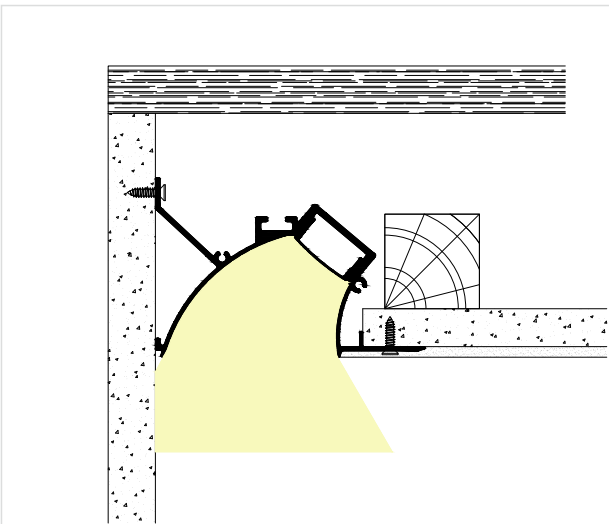
Profile for drywall

- Plastered in the corner of ceiling
- Ideal for Low ceilings , newly built construction projects
- No slot, no suspended ceiling, easy installation
- Light up wall and ceiling



Specifications

Material	AL6063-T5
Finish	White
Diffuser	PC milky
Dimension	W85.5* H56.8mm
Installation	Recessed in ceiling
Stock length	2m



Accessories



Endcap

Light source

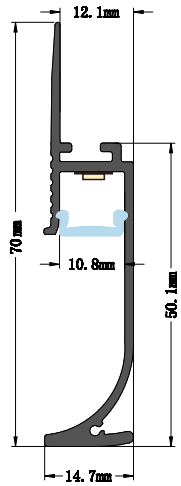
Model No.	LEDs/meter	Voltage	Power	Lumen	CRI	FPC width	Cutting unit
FL2835-120-8mm	120LEDs	DC12V/24V	13W/m	1300LM/m	>80/90	8mm	25mm/12V 50mm/24V

SK1270



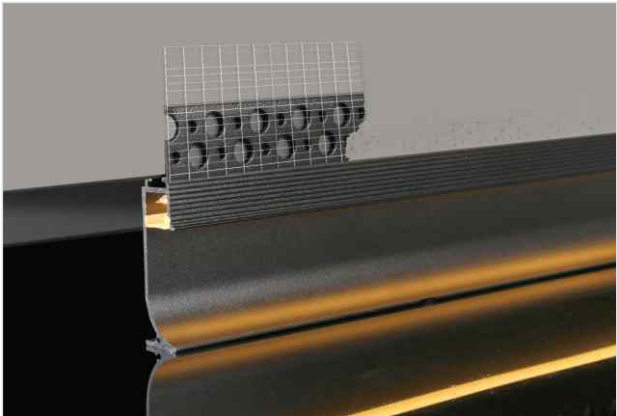
LED profile for skirting board

- Recessed into the wood or drywall structures
- Provide indirect lighting for Skirting board
- can be used as a guiding light in dark places



Specifications

Material	AL6063-T5
Finish	Black
Diffuser	PC milky
Dimension	W14.7 * H70mm
Installation	Recessed for skirting board
Stock length	2 m



Accessories:



Endcap

Light source

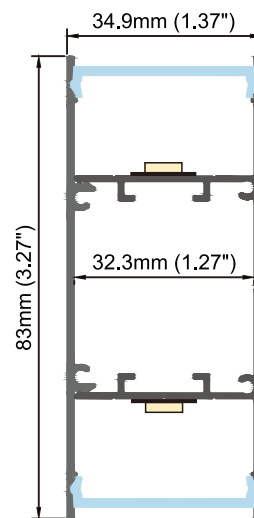
Model no.	LEDs/meter	Voltage	Power	Lumen	CRI	FPC width	Cutting unit
FL2835-120-8mm	120LEDs	DC12V/24V	13W/m	1300LM/m	>80/90	8mm	25mm/3led 50mm/6led

WA3583



Wall mount profile

- Wall mounted up&down led profile with integrated driver
- Two installations-pendant & wall mounted
- Two pieces of design for fixing easily to the wall



Specifications

Material	AL6063-T5
Finish	Silver/Black
Diffuser	PC milky
Dimension	W35* H83mm
Installation	Wall mount
Stock length	2m



Accessories



Endcap

Light source

Model No.	LEDs/meter	Voltage	Power	Lumen	CRI	FPC width	Cutting unit
FL2835-120-8mm	120LEDs	DC12V/24V	13W/m	1300LM/m	>80/90	8mm	25mm/12V 50mm/24V