

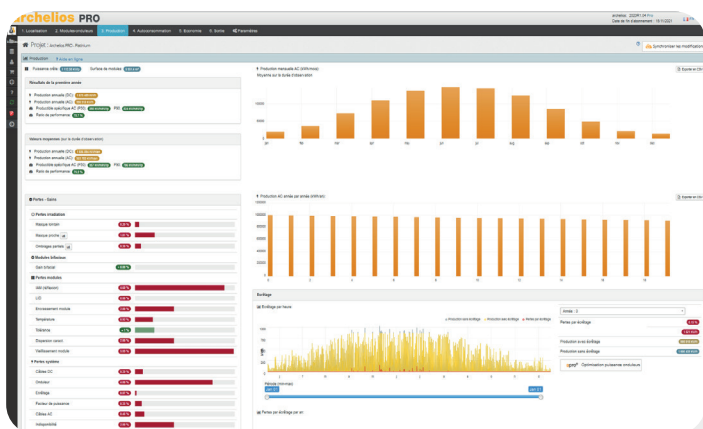
archelios™ PRO

Design, simulate and analyse your photovoltaic projects

Technical Offices, Installers & Developers

With the online app **archelios™ PRO**, you can size any type of photovoltaic project, from rooftop installations to large solar power plants or in self-consumption. Thanks to its versatility, **archelios™ PRO** will provide the feasibility and profitability study, simulation, production calculation, and complete electrical sizing.

With **archelios™ PRO** range, users have an ergonomic and powerful tool, adapted to the size of their projects with features tailored to their needs. With the online app, users can easily access their folders for editing, exporting and sharing.



Productive design

-  Online secure application
-  Simple project management
-  Fast design
-  Ultra-accurate production forecast

archelios™ PRO range

APPLICATIONS	PROJECT POWER	PRICE/year
archelios™ PRO FREE	< 36 kWp	FREE
archelios™ PRO SILVER	< 100 kWp	990€
archelios™ PRO GOLD	< 1 MWp	1 490€
archelios™ PRO PLATINUM	Unlimited	1 990€

archelios™ PRO

Access unique features wherever you are!

archelios™ PRO features

Project design

- Integrated 3D modelling
- Gateways: Sunny Design / K2 Base
- archelios™ plugin for Revit®
- archelios™ plugin for SketchUp
 - Export to archelios™ CALC
 - Modules wiring, inverters and junction boxes
 - Earth moving tools

Analysis and simulation

- Import meteorological data
- User horizon profile import
- Detailed production analysis (*Near mask/ production curve*)
- Yield calculation
- Management and optimization of self-consumption installations
- Management of solar pumping
- Economic analysis of the project
- Projects comparisons

Photovoltaic sizing

- Addition of material references
- Access to BIM&CO module database
- Inverters modules and optimizers sizing
- Automatic or manual wiring of modules strings
- Clipping optimization

Reports

- Editing reports in PDF and CSV format
- Editing single-line diagram in PDF, CSV & PNG format
- DXF - 2D or 3D export (AutoCAD)
- GeoJSON export
- KLM export (Google Earth)



Global view of a photovoltaic installation
Cythelia Energy building, solar division of Trace Software, Chambéry - FRANCE

Discover archelios™ suite

Consisting of **archelios™ PRO** and **archelios™ CALC**, **archelios™ Suite** enables the management of an entire photovoltaic project from the study to the installation.

archelios™ CALC

archelios™ CALC presents a complete and global view of the photovoltaic installation, from the PV modules to the connection to the public power network. **archelios™ CALC** is a solution which ensures optimal security with real time PV calculation of the installation and its control according to the standards.