



Open BIM solution for the electrical installations calculation



## ➤ Electricity joins the virtuous circle of BIM

elec calc™ BIM is a unique software solution for integrating electrical calculation into an Open BIM process. Based on the collaborative IFC and BCF formats, the software allows to design an electrical installation from a digital BIM model and to collaborate with all project stakeholders.



### ➤ elec calc™ BIM is also:

- Multistandards software
- Management of all voltage ranges in the same SLD: HV, LV and DC
- Multi-manufacturer catalogue available for all components and coordination management

- Real-time calculation and power balance
- Management and simulation of operating modes
- Automatic creation of the single line diagram in PDF or DWG
- BCF report
- Import of revisions with verification analysis

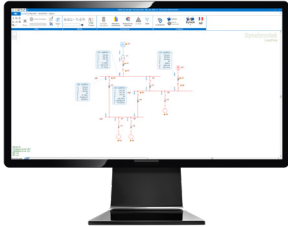
### ➤ Trace Software International services

- Hotline available by ticket or telephone
- Service to request manufacturer references
- Training webinars and accompanying video tutorials
- Regular product updates
- Access to the Trace Electrical plug-in for Revit

## ➤ Trace Software International has been developing software for over 30 years.

We have acquired recognised expertise in calculation, in particular with the elec calc™ solution, software for sizing HV/LV electrical installations according to the international standards.

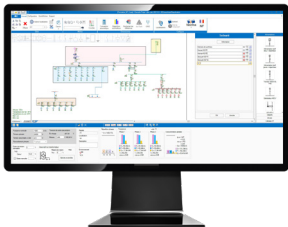
### Software dedicated to electrical installations



## elec calc™ GRID **Coming soon**

Design and simulation software for multi-source mesh networks

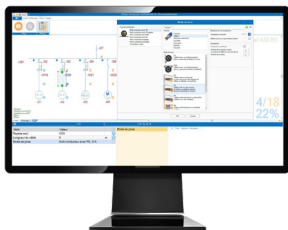
This software provides a complete solution for the simulation of all types of multi-source mesh networks, in other words, the management of smart grids. elec calc™ GRID allows to manage HV/LV networks in the same interface.



## elec calc™

Software for Low Voltage and High Voltage electrical installations calculation

elec calc™ is a software package that enables the calculation of Low Voltage and High Voltage electrical installations in real-time, complying with various international standards.

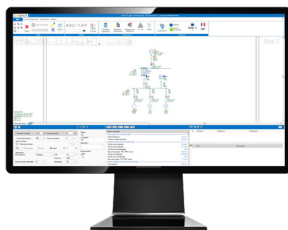


## QuickSchem™

Software for electrical installation data recording and rapid SLD entry

This software is part of the elec calc™ suite to collaborate and exploit the recorded data directly for calculation. Quickschem uses the powerful modeling engine of elec calc™ to ensure fast schematic entry through the IntelliSense feature and associated schematic library.

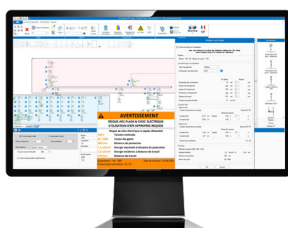
### elec calc™ modules



## DC Module

Direct Current module for Low Voltage installations

This software allows the dimensioning of auxiliary networks (control command), distribution of sockets and/or lighting,... This module is intended for LV installations not covered by any specific standard up to 1500V.



## Arc Flash Module

Protection against risks due to electric arcs

This module quantifies the level of risk in order to choose the PPE of workers during work and interventions on and near electrical installations in accordance with the IEEE 1584 - 2018 standard.