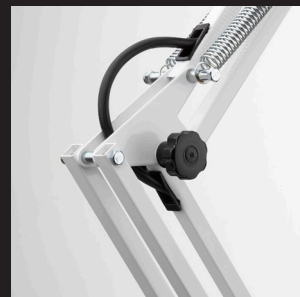
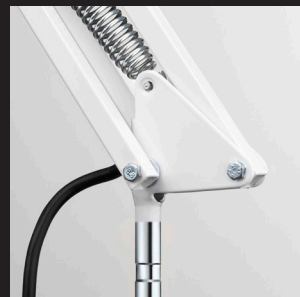
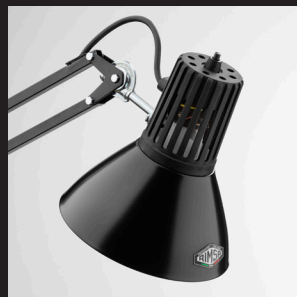




AR - 3D MODEL



Reflector consisting of a top part in glass fibre filled nylon and a lower part in spun iron with finishing edge. It can be used with both LED and Incandescent bulbs.

Mod.10

ACCESSORIES



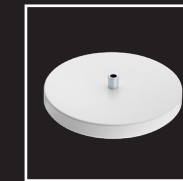
S11



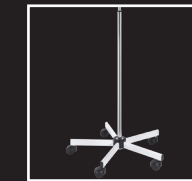
S12MED



S15



BASEPE



RL



GP

Power	60 W
Supply	220-240 V
ES	E27
Reflector's diameter	160 mm
Structure	Pantograph
IP Protection	IP20
Class	I
Cabling	H03 VVF 3X0.75 170 cm with 2P + T 10A Plug
Fixing systems	S11, S12MED, S15, Desk base (Basepe), RL
Colours	Black, Grey, White
Code	10NE, 10GR, 10BI

CODE

NE **10NE**
Black

GR **10GR**
Grey

BI **10BI**
White

