



Apollo

Stadium Sports Light

A professional sports light whose lumens output up to 263,200Lm for FIFA stadiums, that can 1:1 replace the 2000W traditional fixture.



STADIUM/ SPORTS LIGHT



Large light-emitting area
improving light utilization.

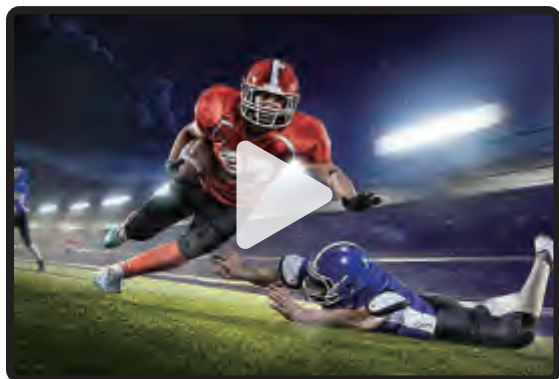
UP TO 263KLM

High-Power 1880W
ONLY 18.5kg

TV Broadcasting

A revolutionary floodlight system for sports and area lighting with unrivaled performance, efficiency, and light quality.

The high-performance floodlight Apollo sets records in terms of performance with up to 263KLM. With a TLCI90 and CRI90, realistic color rendering is guaranteed for broadcasters which means minimal post-processing effort.





Best Light Control

One-piece optic lens, with a precise optical design and various beam angles to minimize glare and meet the requirements of different courts. The visor is optional according to the size of the venue to cut off light distribution, so as to obtain the best visibility and provide comfortable light to the venue, athletes, live audience, and screen audience.



Precision aiming

The precision aiming device will assist in precisely aligning the light to the aiming point, which makes your work much easier and highly efficient.

Good Heat Management

AL1070 high thermal conductive aluminum, excellent heat dissipation performance. Efficient ventilation design can perfectly avoid light decay and irreversible failure for LEDs because of the high temperature during work.

Wireguard

Metal bellows prevent birds from pecking at the cables.

Safety Wire

Safety wire is used to prevent the lighting fixture from falling during installation, maintenance or replacement at high altitudes

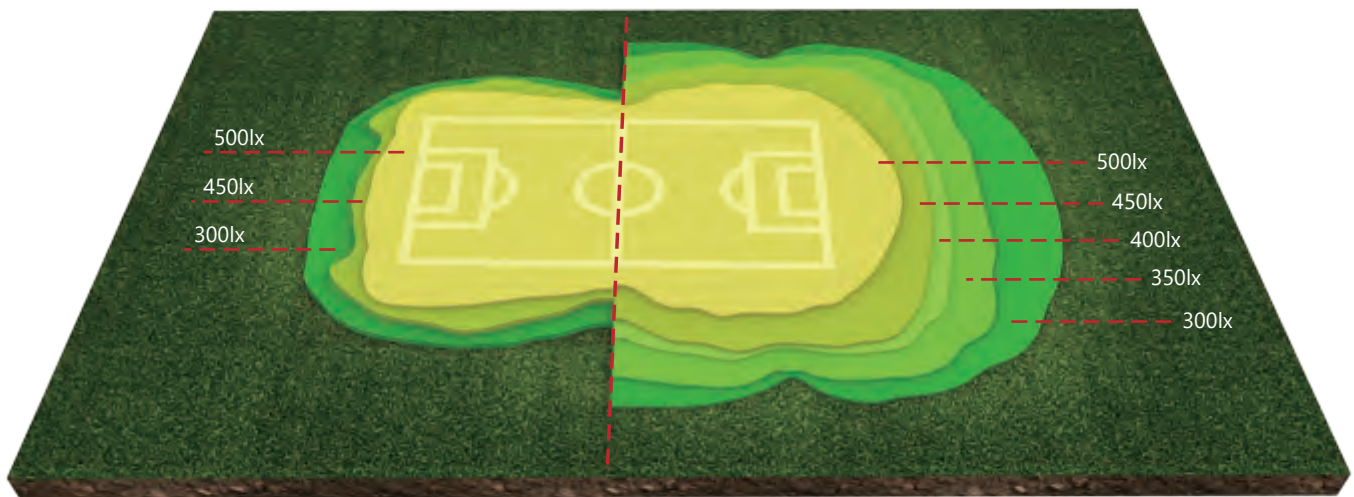


1000 Hours Salt Spray Test

Aluminum alloy+SUS304, pass 1000 hours salt spray test, especially for outdoor sports fields, parking lots, airports, port, and so on.



Make the Light Perfect



HD's Sports light:

Apollo's LED optics are recessed in a low glare shield providing the perfect combination of optical accuracy and cut-off.

Our Spill light control design outperforms typical LED systems in efficiency, brightness, suppressed glare, spillage, and sky glow. So you'll need far fewer fixtures to increase light on your field.

Others' Sports light:

Common sports light systems provide excellent initial light levels and uniformity but are difficult to contain illumination to the field.

This presents challenges in reducing the spill light surrounding the field.



Brightness, intelligent control
one hand control

DMX and DMX-RDM Optional

The DMX drivers enable luminaires to be connected to intelligent lighting management systems, for remote lighting management and dynamic light shows and meet the highest, performance standards to link the luminaires and dynamic lighting control systems.

The DMX-RDM programmable driver can be programmed for lighting behavior to support the integration of a variety of entertainment lighting devices.



Inventronics

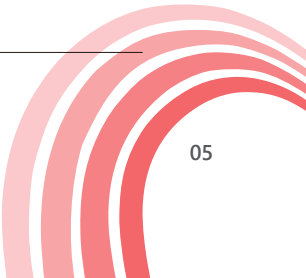


Delta

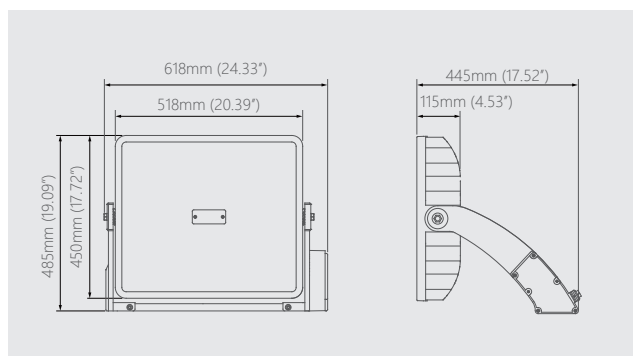


Parameters

Model No.	HD-FL-G11-1260W	HD-FL-G11-1560W	HD-FL-G11-1650W	HD-FL-G11-1800W	HD-FL-G11-1880W
Wattage Tunable	1260W	1560W	1650W	1800W	1880W
Light Efficiency (@5700K)	105Lm/W@Ra90 & TLCI90~140Lm/W@Ra70				
Lumen Flux (@5700K)	132,300Lm-176,400Lm	163,800Lm-218,400Lm	173,250Lm-231,000Lm	189,000Lm-252,000Lm	197,400Lm-263,200Lm
CCT	3000K / 4000K / 5000K / 5700K / 6500K				
Beam Angle (±5°)	10°(OSRAM) / 13° / 17° / 24° / NB-P60 (SAMSUNG)				
CRI	70 , 80, 90, TLCI90				
SDCM	5				
Input Voltage	AC100-277V / AC220-400V / AC277-480V				
Power Factor	≥0.95@230V & full load				
THD	≤15%@AC220-240V				
Percent flicker(%)	<1%				
Surge Protection	6KV / 10KV / 20KV				
Protection against electric	Class I				
Environmental location of luminaries)	IP66 / Wet location				
IK	IK10				
EPA	3.0ft ²				
Operating Temp Ranger	-40°C~-+50°C@outdoor (-40°F~-+122°F@outdoor)				
Intelligent control	0-10V, DMX & DALI-2, RDM				
Lifetime	100, 000H(L90B50@25°C) / 100, 000H(L90B50@77°F) , 60, 000H(L90B10@25°C) / 60, 000H(L90B10@77°F)				
Weight (kg/lbs)	18.5kg±0.5 / 40.79±1.1lbs				
Dimension (mm/in)	618x 485x 445mm / 24.33*19.09*17.52in				
Packing Dimension (mm/in)	L750x W680x H215mm / L29.53x W26.77x H8.46in				
Warranty	7 years, Isolated (5 years, Non-isolated)				
Certificate	UL / DLC / UKCA / RCM / C-Tick / CB / CE / ENEC / SAA / RoHS / ERP				
Specification	LED: OSRAM, SAMSUNG Driver: Inventronics, Moso, Delta, HDe				
Material	Structure: Cold Forging / High Thermal Conductivity AL Finish: Powder coated Lens: Polycarbonate Color: Gray				



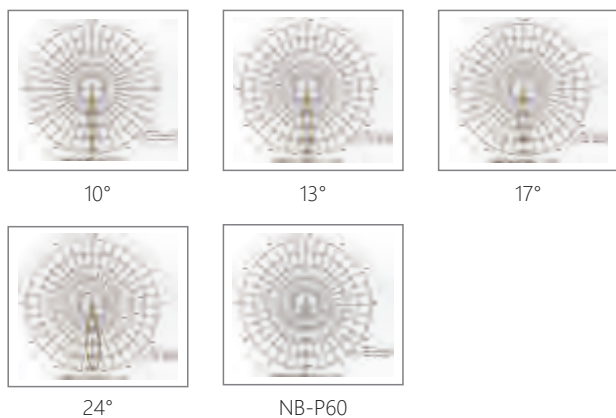
Dimension



Optical Accessories



Photometric Diagrams



Applications

Outdoor / Indoor / Industrial

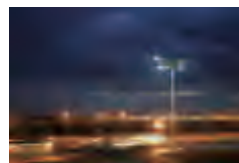
- Sports & recreational fields
- Large-scale outdoor events
- Industrial and construction sites
- Parking lots and garages
- Crane lighting
- Security and outdoor surveillance



Sports Complex



Football Pitch



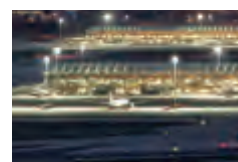
Industrial & construction sites



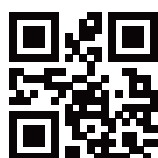
Parking Lot



Port Lighting



Airport



Shenzhen Huadian Lighting Co.,Ltd.

Web: www.hdled.com

Tel: +86 755-23031787

Address: Jinkaijin Industrial Park, Bao'an, Shenzhen, China