

XANLITEENERGY



**KWH AT 0€ !**

**KITS PLUG&PLAY : SWITCH  
TO SELF-CONSUMPTION**



## SWITCH TO SELF-CONSUMPTION

### SWITCH TO SOLAR SELF-CONSUMPTION WITH XANLITE ENERGY

At Xanlite, a **French brand** with 26 years of expertise, we have a mission: to support and accelerate the energy transition. After popularizing LED lighting and connected lighting, we are now focusing on making solar self-consumption kits more accessible.

Whether you want to take your first step into self-consumption or aim for greater autonomy, we have all the solutions to make your life easier !

### WHAT IS SOLAR SELF-CONSUMPTION FOR?

If you monitor your daily electricity consumption, you'll notice a nearly constant baseline consumption, which corresponds to the energy used by all your continuously running appliances, some of which remain active even when you're on vacation. The purpose of self-consumption is to generate your own energy to meet all or part of this energy demand, thus reducing your electricity bill.

**So, are you ready to switch to solar self-consumption?**

## KWH AT 0€ !

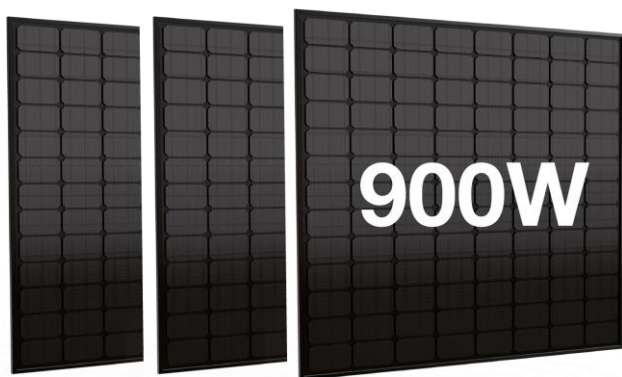
Our **Plug&Play** kits make it effortless to reduce your bills. An effective and environmentally friendly solution, photovoltaics harness green, renewable, and free energy to power your home.

During the day, the photovoltaic panel in our **Plug&Play** kits captures solar radiation and converts it into electrical energy. The inverter, connected to the photovoltaic panel and your electrical grid through a standard power outlet, converts the direct current from the photovoltaic panel into alternating current.

A power outlet is reversible and can be used both to draw energy from the grid and to provide it. Therefore, the energy produced by the photovoltaic panel locally powers your devices by supplying them with all or part of the power they consume.

At night or when the PV (photovoltaic) system produces little energy due to weather conditions, the additional energy required to operate your devices is drawn from the distribution grid.

**Enough to cover a significant portion of your consumption throughout the year !**



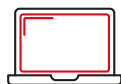
**PRODUCE UP TO**  
**1330kWh/YEAR**  
**AND POWER YOUR HOME**



13 Light fixtures  
**105kWh**



1 Wi-Fi box  
**100 kWh**



1 Computer  
**145 kWh**



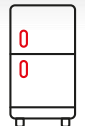
1 Television  
**145 kWh**



1 Dishwasher  
**190 kWh**



1 Washing machine  
**190 kWh**



1 Refrigerator  
**450 kWh**



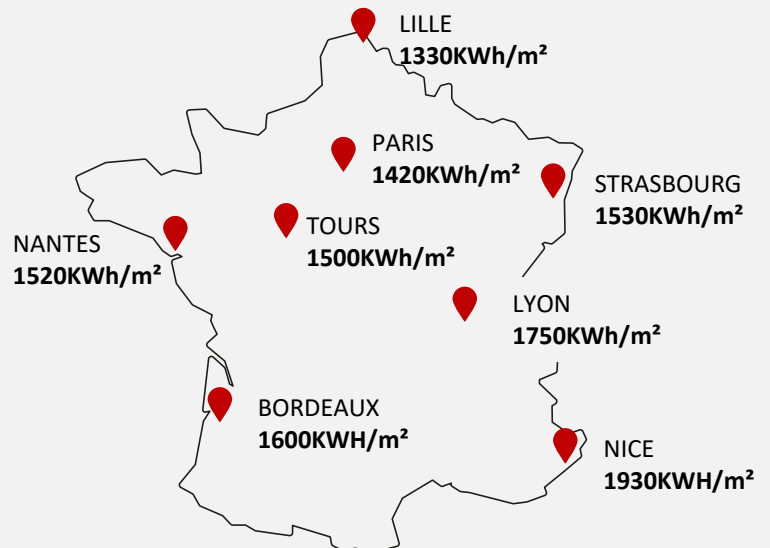
## EFFORTLESS COMFORT

The French territory is conducive to the installation of solar panels for individuals looking to get started with solar self-consumption.

Xanlite assists you in your project by offering ready-to-use **Plug&Play** kits. In addition to the sunlight levels in the region, other factors need to be considered in optimizing the efficiency of solar panels, namely :

- The orientation of the photovoltaic panel
- The tilt of the photovoltaic panel
- The type of photovoltaic panel

Up to  
**4500€\***  
In savings



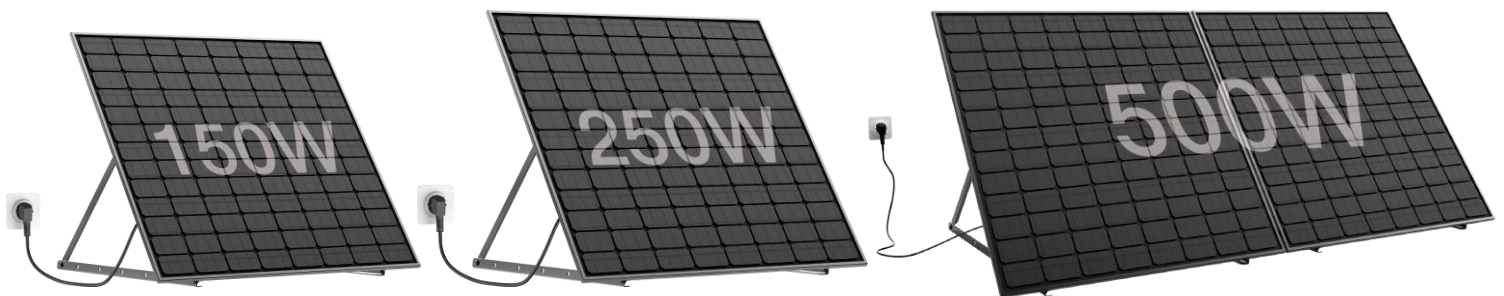
4500€ saved over 15 years for 900W of installed photovoltaic panels, equivalent to the installation of 3 XANLITE Energy kits facing due south and tilted at 35°: 1 kit of 150W + 1 kit of 250W + 1 kit of 500W in Nantes, France, with an average production of 1330 kWh per year.

\*Calculations are based on the EDF Blue Rate of €0.2276/kWh as of August 1, 2023, which is subject to change over time. The simulation and information regarding photovoltaic electricity production are based on European Open-Source PVGI data and have no contractual value.

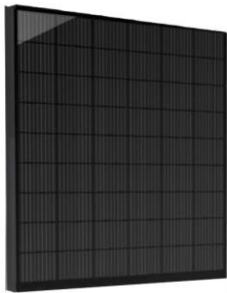
## OUR NEW GENERATION KITS

### A COMPLETE RANGE TO MEET ALL YOUR NEEDS

- Delivered ready to use with all accessories
- Easy installation: on the ground, on a wall, or on a guardrail
- Easily adaptable to various spaces: **house, apartment, garden shed...**
- Portable and adjustable (maximum weight of 12.6kg per panel)
- **Expandable** to maximize your electricity production
- **Cost-effective**: kits pay for themselves in 4 to 6 years depending on the model
- Safe: compliant with DIN VDE0126 electrical standard requirements
- **15-year warranty** for added peace of mind



**i** KIT  
**PRÊT À L'EMPLOI**  
 READY-TO-USE KIT



### THE ADJUSTABLE PHOTOVOLTAIC PANEL TO HARNESS THE ENERGY OF THE SUN

Elegant 'full black' finish  
 Adjustable panel, high efficiency  
 80% of rated power guaranteed for 25 years  
 Waterproof: capable of withstanding all weather conditions **IP67**  
 Materials: PERC monocrystalline PV cells / tempered glass / aluminum frame



### THE MICRO-INVERTER TO CONVERT SOLAR ENERGY AND DISTRIBUTE IT TO YOUR OUTLETS

Warranty: 15 years  
 Plug into a standard outlet  
 High performance: **maximum efficiency of 96.5%**  
 Waterproof: **IP67** protection rating  
 Compatible with all European electrical grids

**15** YEARS  
**WARRANTY**

### THE FRAME AND ACCESSORIES FOR A TURNKEY INSTALLATION

Durable **aluminum** frame  
 Mounting brackets included: wall, ground, and balcony attachments  
 Versatile: suitable for all types of materials (wood, brick, etc.)  
 3m power cord

### THE APP TO TRACK YOUR REAL-TIME ENERGY PRODUCTION

Free Solarman App  
 Intuitive interface accessible remotely  
 Available on **IOS** and **Android**



# 3 MODES DE FIXATION 3 FIXING MODES

## MULTIPLE FIXING METHODS ADAPTED TO YOUR HOME



 **BALCONY**



 **WALL-MOUNTED**



 **BALCONY**

### GOOD TO KNOW :

To optimize the efficiency of your solar panels, a south-facing orientation with a 30-35° tilt represents the ideal configuration ! Our tilt adjustment system allows you to easily choose the best tilt angle.



## INSTALLATION FACILE

EFFORTLESS INSTALLATION



Easy to install, our **Plug&Play** kits do not require the intervention of a professional.



# 1

### INSTALL

Secure the solar panel according to your space: on the ground, on the façade, or on a guardrail. The provided installation kit makes the installation process easy.



# 2

### PLUG-IN

Connect your solar station to the electrical grid using the provided 230V IP44 socket.



# 3

### VISUALIZE

Monitor your **real-time** production remotely through the free SOLARMAN app.



# 4

### SAVE

Save up to **4500€** over 15 years on your electricity bill and recoup the cost of your energy production solar kit in **4 to 5 years**.

## GOOD TO KNOW :

Before connecting your electricity production solar kit to your electrical grid, it is important to verify that the power you plan to install is compatible with what you can inject into your installation.

The **maximum power** that can be injected into one or more power outlets on the same group of outlets depends on the wiring and installed circuit breakers. These maximum powers are :

- 350W if the group of outlets is protected by a 16A circuit breaker (cables with a 1.5mm<sup>2</sup> cross-section)
- 900W if the group of outlets is protected by a 20A circuit breaker (cables with a 2.5mm<sup>2</sup> cross-section)

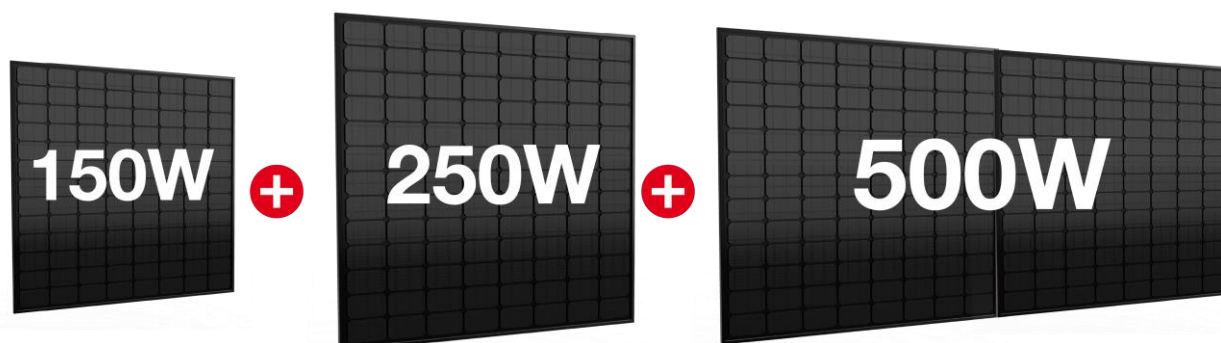


You can connect multiple **Plug&Play** kits to increase your own production and reduce your electricity bill. Our Plug&Play kits can be interconnected up to a maximum power of 900W\*.

Extending our Plug&Play kits requires the purchase of the ENKEXTENSION accessory, sold separately.



Choose the configuration that suits you within the maximum power limit of 900W,



**KIT STARTER 150W**

UP TO 6 KITS OF 150W

**KIT HOME + 250W**

UP TO 3 KITS OF 250W

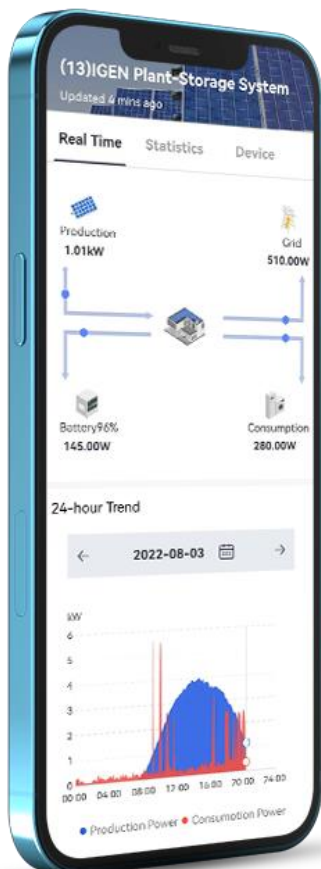
**KIT ADVANCED 2x250W**

UP TO 1 KIT OF 500W

(1) 900W corresponds to the maximum power that can be injected into a set of power outlets wired with a 2.5mm<sup>2</sup> cross-section and protected by a 20A circuit breaker.

## MAINTAIN CONTROL

With the SOLARMAN app, track the performance of your **Plug&Play** kits.



1. Monitor your solar energy production in real-time from anywhere
2. Monitor your consumption with alert reports in case of installation-related issues
3. Better control your consumption and thus achieve additional savings on your annual bill



XANLITE

plug&play

SOLAR KIT **150W**

ENKSTARTER150W | 3700619437804



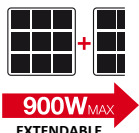
Ideal for  
**balconies**

**299€<sub>TTC</sub>**  
PVPC\*\*

150W



**150W**  
POWER



**3** / MODES  
DE FIXATION  
3 FIXING MODES

**15** YEARS  
WARRANTY



**3M**  
Power  
Cord

7,5kg

870x886  
mm

\*\*Suggested public selling price. This price is for reference only; the final selling price decision is at the discretion of the distributor.

In accordance with the laws governing artistic property rights or related rights, the reproduction and representation of all or part of the components of this document are strictly prohibited.

XANLITE

plug&play

SOLAR KIT **250W**

ENKHOME250W | 3700619437811

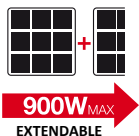


**399€<sub>TTC</sub>**  
PVPC\*\*

250W



**250W**  
POWER



**3** MODES DE FIXATION  
3 FIXING MODES

**15** YEARS  
WARRANTY



**3M**  
Power Cord

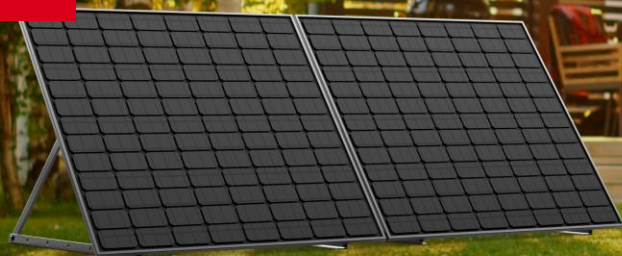
12,6kg

1133x1060  
mm

\*\*Suggested public selling price. This price is for reference only; the final selling price decision is at the discretion of the distributor.

In accordance with the laws governing artistic property rights or related rights, the reproduction and representation of all or de tout ou partie des éléments constitutifs de ce document sont strictement interdits.

XANLITE



plug&play

SOLAR KIT **500W**

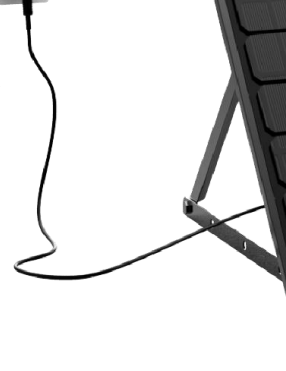
ENKADVANC500W | 3700619437828



Ideal for  
gardens

**699€<sub>TTC</sub>**  
PVPC\*\*

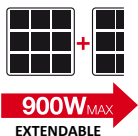
500W



**500W**  
POWER



IP67  
RAIN  
RESISTANT



**900W<sub>MAX</sub>**  
EXTENDABLE

**3** / MODES  
**DE FIXATION**  
3 FIXING MODES

**15** YEARS  
WARRANTY



**3M**  
Power  
Cord

2 X  
12,6kg

2 x  
1133\*1060  
mm

\*\*Suggested public selling price. This price is for reference only; the final selling price decision is at the discretion of the distributor.

In accordance with the laws governing artistic property rights or related rights, the reproduction and representation of all or de tout ou partie des éléments constitutifs de ce document sont strictement interdits.

XANLITE

plug&play

KIT **EXTENSION**

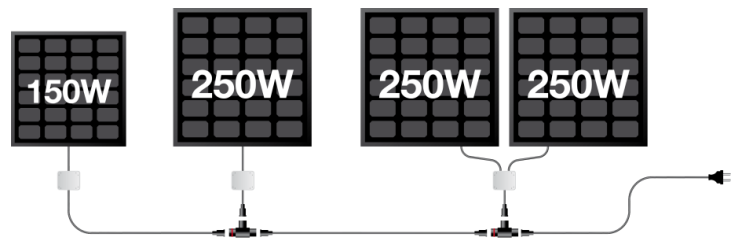
ENKEXTENSION | 3700619437880

**29,99€<sup>TTC</sup>**  
PVPC\*\*

3m Extension Cable  
3G1.5mm<sup>2</sup>

+

T-Connector



**EXTENDABLE** **900W<sup>MAX(1)</sup>**

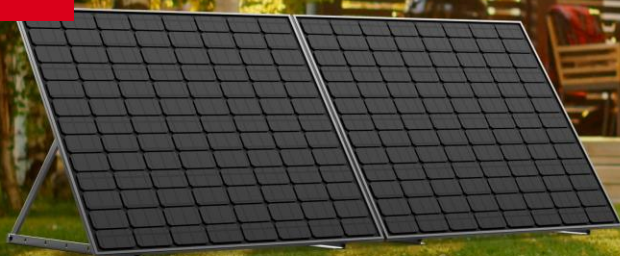
Extension possible avec le kit en option



(1) 900W corresponds to the maximum power that can be injected into a set of power outlets wired with a 2.5mm<sup>2</sup> cross-section and protected by a 20A circuit breaker.

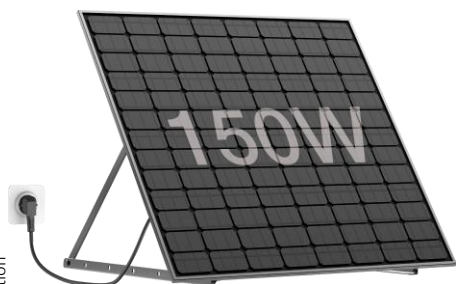
\*\*Suggested public selling price. This price is for reference only; the final selling price decision is at the discretion of the distributor.

In accordance with the laws governing artistic property rights or related rights, the reproduction and representation of all or de tout ou partie des éléments constitutifs de ce document sont strictement interdits.



plug&play

## SOLAR KIT 150W



**299€**  
PVPC\*\*

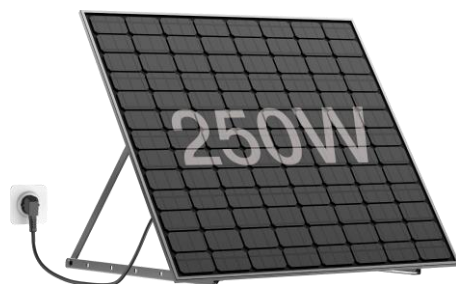
**234 kWh/year**  
Annual production

**800€**

In savings over 15 years\*

**5,6 years**  
Profitability

## SOLAR KIT 250W



**399€**  
PVPC\*\*

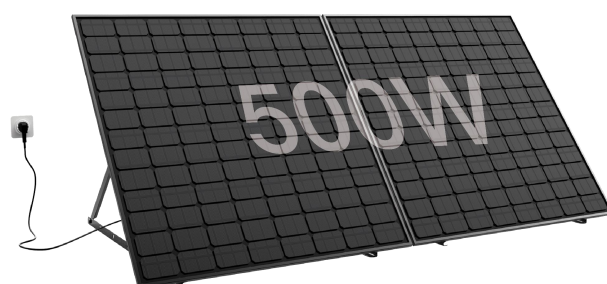
**365 kWh/year**  
Annual production

**1250€**

In savings over 15 years\*

**4,8 years**  
Profitability

## SOLAR KIT 500W



**699€**  
PVPC\*\*

**730 kWh/year**  
Annual production

**2500€**

In savings over 15 years\*

**4,2 years**  
Profitability

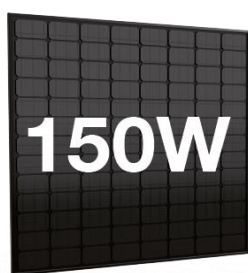
\*Calculations are based on the EDF Blue Rate of €0.2276/kWh as of August 1, 2023, which is subject to change over time. The simulation and information regarding photovoltaic electricity production are based on European Open-Source PVGI data and have no contractual value.

\*\*Suggested public selling price. This price is for reference only; the final selling price decision is at the discretion of the distributor.

In accordance with the laws governing artistic property rights or related rights, the reproduction and representation of all or de tout ou partie des éléments constitutifs de ce document sont strictement interdits.

plug&play

## SOLAR KIT 150W



PRODUCE UP TO  
**234kWh/YEAR**  
AND POWER YOUR HOME

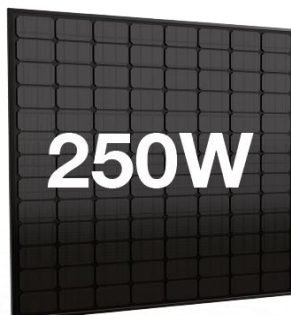


13 Luminaires  
13 lamps  
**105kWh**



1 Box wifi  
wifi box  
**100 kWh**

## SOLAR KIT 250W



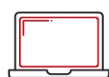
PRODUCE UP TO  
**365kWh/YEAR**  
AND POWER YOUR HOME



13 Luminaires  
13 lamps  
**105kWh**

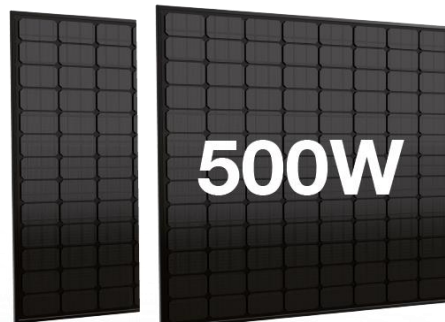


1 Box wifi  
wifi box  
**100 kWh**



1 Ordinateur  
computer  
**145 kWh**

## SOLAR KIT 500W



PRODUCE UP TO  
**730kWh/YEAR**  
AND POWER YOUR HOME



13 Luminaires  
13 lamps  
**105kWh**



1 Box wifi  
wifi box  
**100 kWh**



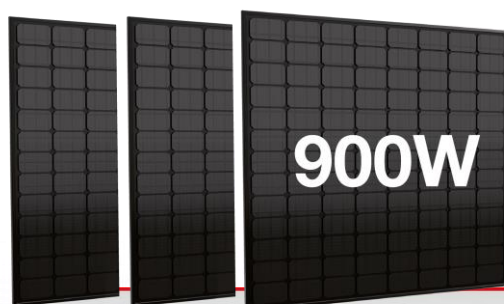
1 Ordinateur  
computer  
**145 kWh**



1 Téléviseur  
television  
**145 kWh**



1 Lave-vaisselle  
dish washer  
**190 kWh**



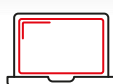
PRODUCE UP TO  
**1330kWh/YEAR**  
AND POWER YOUR HOME



13 Light fixtures  
**105kWh**



1 Wi-Fi box  
**100 kWh**



1 Computer  
**145 kWh**



1 Television  
**145 kWh**



1 Dishwasher  
**190 kWh**



1 Washing machine  
**190 kWh**



1 Refrigerator  
**450 kWh**

## OPTIMIZED SHELF PLACEMENT



### GOOD TO KNOW :

As a partner of major DIY, retail, and convenience store chains for several years, Xanlite understands your store constraints.

Therefore, we have worked on an optimized packaging, in a compact format designed to facilitate transport, storage, and shelf placement.

Made from 100% recyclable cardboard, our packaging is also environmentally friendly.

### FREE\*\*\*

The explanatory POP display kit includes 1 ILV and 1 demo TV to enhance your shelf and boost sales.

\*\*\*POP display kit included for orders over €2708 (exclusive of taxes)

# XANLITE

92 Boulevard Victor Hugo  
92110 Clichy – FRANCE

@xanlite  
[www.xanlite.com](http://www.xanlite.com)

