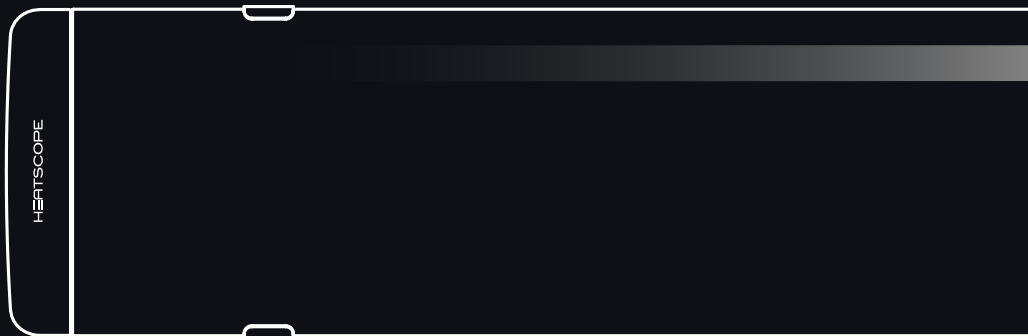


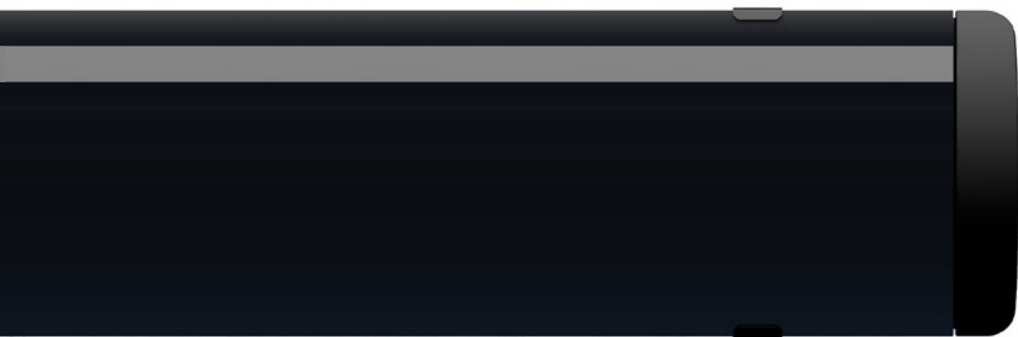


HEATSCOPE® PURE

HEATSCOPE

LESS. IS. MORE.





PURE.

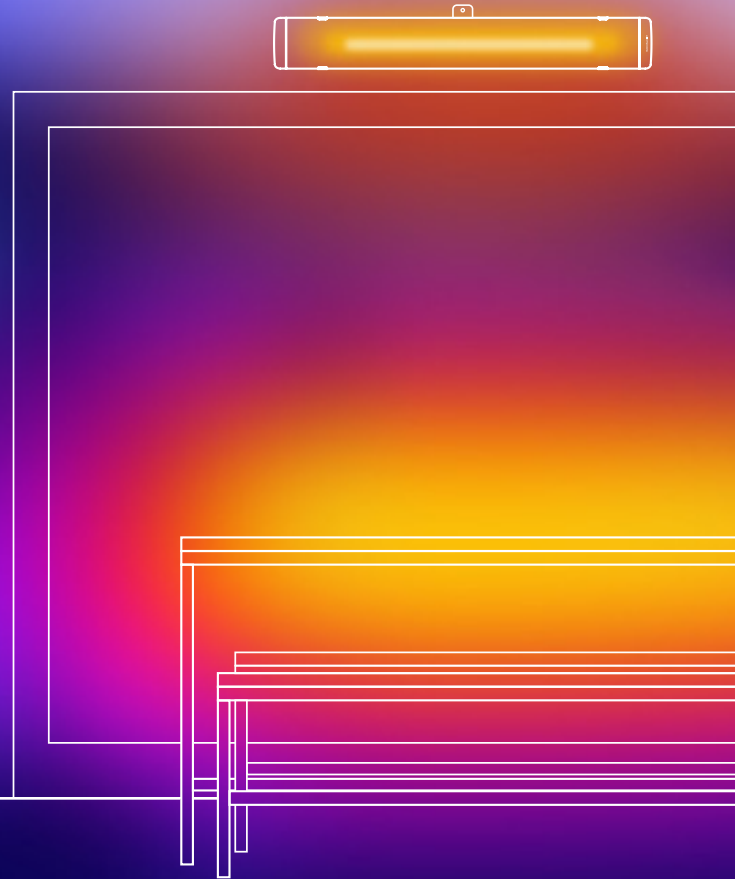
PURE. HEAT.

In this case, “less” means “less light” – and therefore “more heat”.

In other words: The previous concept for infrared radiant heaters has been turned upside down and thought of in a completely new way.

In conventional heaters, the heat arises as part of the process of generating light (for example using halogen light tubes or quartz elements). At HEATSCOPE® we've adopted a new way of doing things.

In this newly developed concept for radiant heaters, light is nothing but an inconspicuous by-product of heat generation. Here, two carbon fibre spirals are charged with an electric current, and they begin to glow and heat up. So alongside the immediately noticeable rise in temperature, there is a subtle, orange-coloured ambient light.





WARMER. BY. DESIGN.

Optimal heat output and design are the top priorities of all HEATSCOPE® infrared radiant heaters!

As early as the initial planning stage, the most important question is always: how can we achieve the best output with the most attractive style and clean-cut design?

The result of this – after countless meetings, tests and prototypes – is elegant appliances that don't look like radiant heaters at first glance.

The HEATSCOPE® **PURE** is the only radiant heater worldwide fitted with a convex SCHOTT NEXTREMA® glass front. The glass primarily fulfils a technical purpose: thanks to its curvature, the carbon heating elements are located directly at the front and emit even more heat in the A-shaped heating corridor underneath - doing so with significantly reduced light.

It was no accident that the HEATSCOPE® **PURE** from **Design Studio Bjørn Blisse** was awarded the RedDot Design Award in 2018.



reddot design award
winner 2018



SO. EASILY. MOUNTED.

The HEATSCOPE® PURE comes with a new, colourful fitted bracket for ceiling or wall mounting. The included wall or ceiling bracket only requires two screws to be attached securely.

The radiator is then held only by a clamping rail. On the back of the casing there is a nut which is used to fix it. Finally, the radiator can be oriented to the desired angle using the swivel joint.

This saves time, increases flexibility, and is more elegant.





PLUG. AND. PLAY.

The HEATSCOPE® **PURE** is connected with an IP65 protection class power connector with a 4-pole lead.

SPECIFICATIONS:

ON/OFF + two manually adjustable output levels (100% and 50%) on the appliance or external (integrable in Smart Home Systems such as somfy, Elsner, KNX etc.)

Info EU Regulation 2015/1188 on the Ecodesign Directive 2009/125/EC:

The HEATSCOPE® PE series radiant heaters conform to the EU 2015/1188 Ecodesign Directive for installation in enclosed spaces when the space temperature control is equipped with the optionally available DEVIreg™ smart thermostat.



HEATSCOPE
MHG-P2400A 120
230-240V AC ~ 60/50 Hz 2400W/2000W
EMC
IP45
RoHS
Compliant
Made in China

MSC Munich Home Systems GmbH
Hornwegstr. 12 • 81549 München
HEATSCOPE: info@heatscope.com

4 301111 1 00000

PURE. BLACK. HEAT.

HEATSCOPE® PURE ALLBLACK

Convex black front screen.

High performance industrial glass ceramic SCHOTT NEXTREMA®.

Black coated aluminium body.

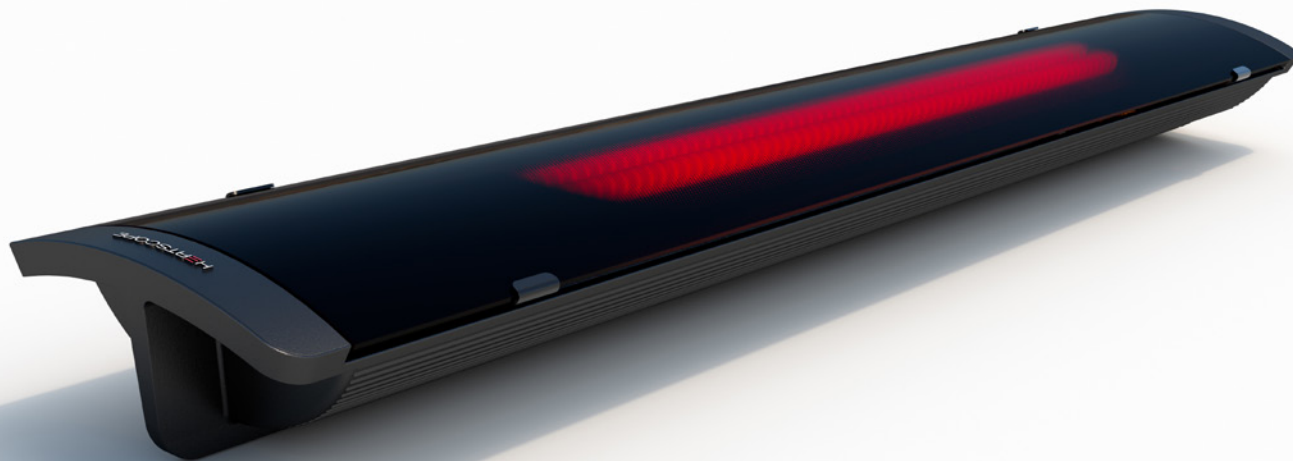
Energy efficient double carbon heating elements directly behind the curved glass front.

Patented reflector heating system with ventilated back.

Visible light: <300 Lumen.

Maximum output in 20 seconds.

Item no.:	MHS-PE2400AB.100
Colour (front / body):	black
Output:	2400 W
Weight:	7.5 kg
Radiator dimensions:	1044 x 166 x 87 mm
Protection class:	IP65



reddot design award
winner 2018

PURE. WHITE. HEAT.

HEATSCOPE® PURE WHITE

Convex white front screen.

High performance industrial glass ceramic SCHOTT NEXTREMA®.

White coated aluminium body.

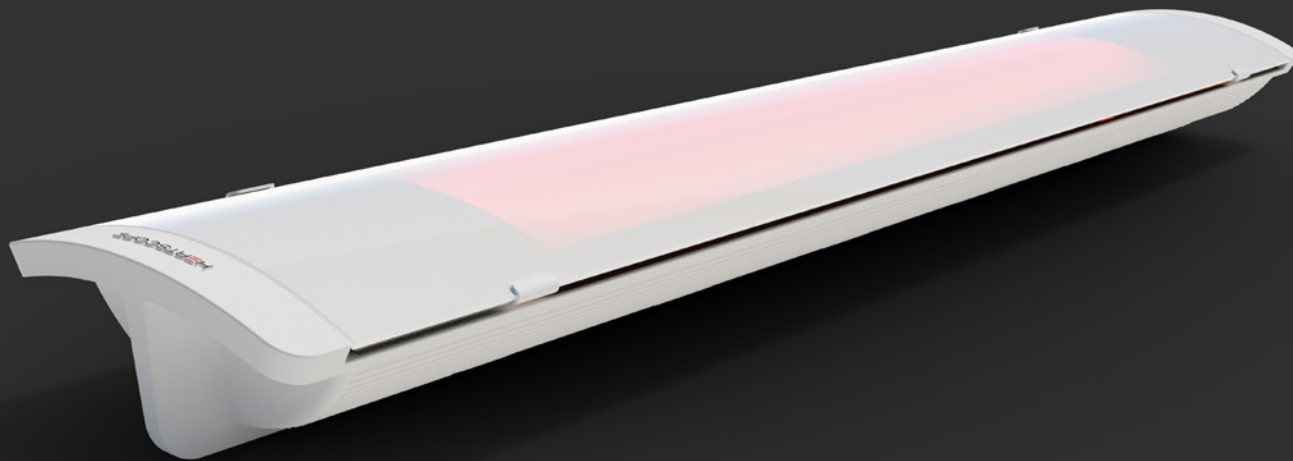
Energy efficient double carbon heating elements directly behind the curved glass front.

Patented reflector heating system with ventilated back.

Visible light: <300 Lumen.

Maximum output in 20 seconds.

Item no.:	MHS-PE2400WT.100
Colour (front / body):	white
Output:	2400 W
Weight:	7.5 kg
Radiator dimensions:	1044 x 166 x 87 mm
Protection class:	IP65



reddot design award
winner 2018

ON. OFF. AND ON AGAIN.

SMARTBOX is THE control unit for HEATSCOPE® PURE design heaters!

Just mount it between power supply and heater – and it's possible to control the HEATSCOPE® heater with the included IR remote control, to switch the PURE ON and OFF, to regulate it down on 50% power or to regulate it back again on full 100% output.

somfy.

And if you have a somfy® I/O control unit already in action, you will love the SMARTBOX somfy® version for integration in your existing I/O system. No need to hide big actuators anymore – it's all inside the small box now!





HEATSCOPE

BLACK. OR WHITE.

HEATSCOPE® SMARTBOX

Convex formed black or white translucent front screen.

Black or white housing (corresponding with PURE heater).

Controlled via HEATSCOPE® infrared remote control or with somfy® I/O.

Mounting panel included for installation with PURE heater.

Remote control + batteries within scope of delivery (excl. somfy® I/O).

With shutdown feature (not somfy® I/O):
automatic shutdown after 4, 6 or 8 hours (deactivation possible).

Idea + design: Studio Bjørn Blisse

Power supply:	220-240 V AC~
Weight:	0.35 kg / 0.51 kg incl. mounting panel
Measurements:	100 x 170 x 35.5 mm
Protection class:	IP65

IR remote control HEATSCOPE®

Art.-no. MHS-SBOXIAB.100
Colour: allblack

Art.-no. MHS-SBOXIWT.100
Colour: white

I/O control unit somfy.

Art.-no. MHS-SBOXSAB.100
Colour: allblack

Art.-no. MHS-SBOXSWT.100
Colour: white



HEATSCOPE®

ambient heating · made in Germany

DISTRIBUTION:

MOONICH®
brands for atmosphere

MOONICH GmbH
Kramergasse 32
D-82054 Sauerlach

Phone: +49 8104 64 70 90

Fax: +49 8104 64 70 99

mail@heatscope.com

www.heatscope.com

MANUFACTURER:



MHS Munich Home Systems GmbH
Kramergasse 32
D-82054 Sauerlach

www.munich-home-systems.de

■ developed
■ designed
■ made in
■ Germany

