

A modern, dark grey building with white horizontal stripes and a large glass entrance. The sky is blue with white clouds. An orange diagonal line runs from the top left corner towards the center.

**maritec**  
NIVISS



Foundation: 2012

Headquarters: Gdynia, Poland

**CREE**   
► LED Solution Provider

Niviss.com

# AGENDA

About Niviss



PRODUCTS



PROJECTS



STRATEGY



WHY NIVISS



DISCUSSION



maritex  
NIVISS



## ABOUT NIVISS

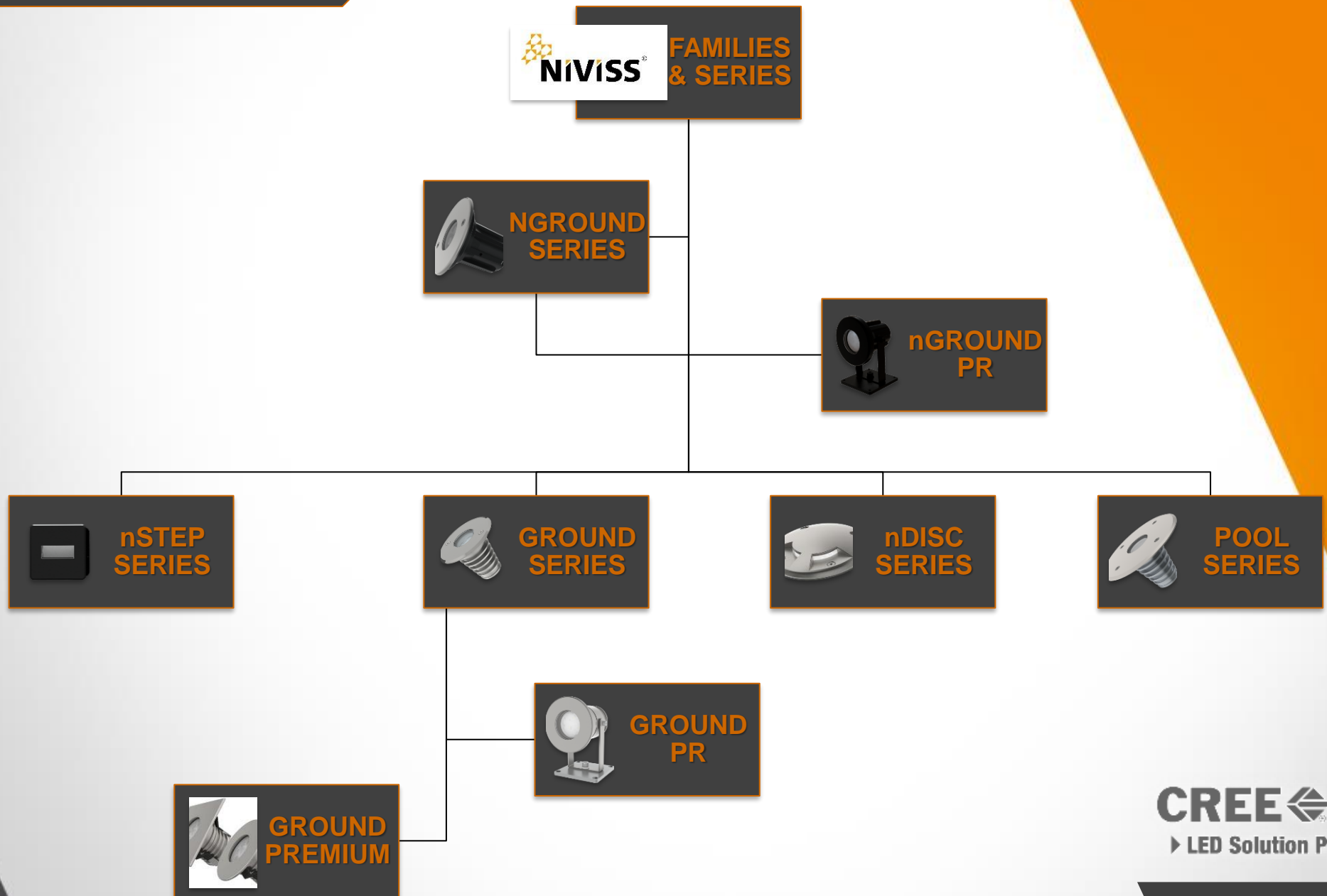


- ✓ Fast-growing company with extensive experience in the electronics industry.
- ✓ Specializes in the design and manufacture of high-quality exterior LED light fixtures.
- ✓ Established in 2012 as a daughter company for leader electronics and LED components company "Maritex" since 1987.
- ✓ Company headquarters is located in Gdynia, Poland.



- ✓ Company is able to provide both mass productions, as well as smaller series of custom solutions implemented for a particular customer.
- ✓ All products are energy efficient and environmentally friendly.
- ✓ NIVISS offers wide range Polish made products with long warranty period.
- ✓ Our mission is to provide customers with high quality products of the XXI century.

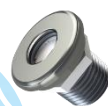
# PRODUCT's FAMILIES



# PRODUCT's FAMILIES



## GROUND SERIES (ALU/SS, IP67/68, LV/HV, RGB)



**NANO**  
(1-2W)



**MICRO**  
(1-2W)



**MINI**  
(2-3W)



**STANDARD**  
(7W)



**MEDIUM**  
(20W)



**BIG**  
(33W)



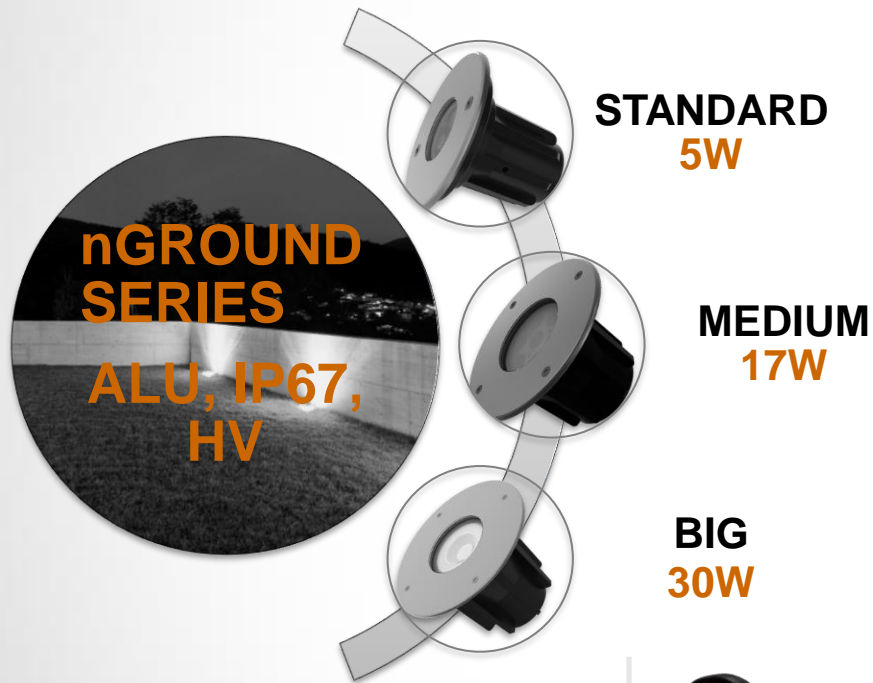
ALU/SS  
IP67/68  
SPIKE/PLATE  
HV/LV



ALU/SS  
IP67/68  
PLATE  
HV/LV



**CREE**   
► LED Solution Provider



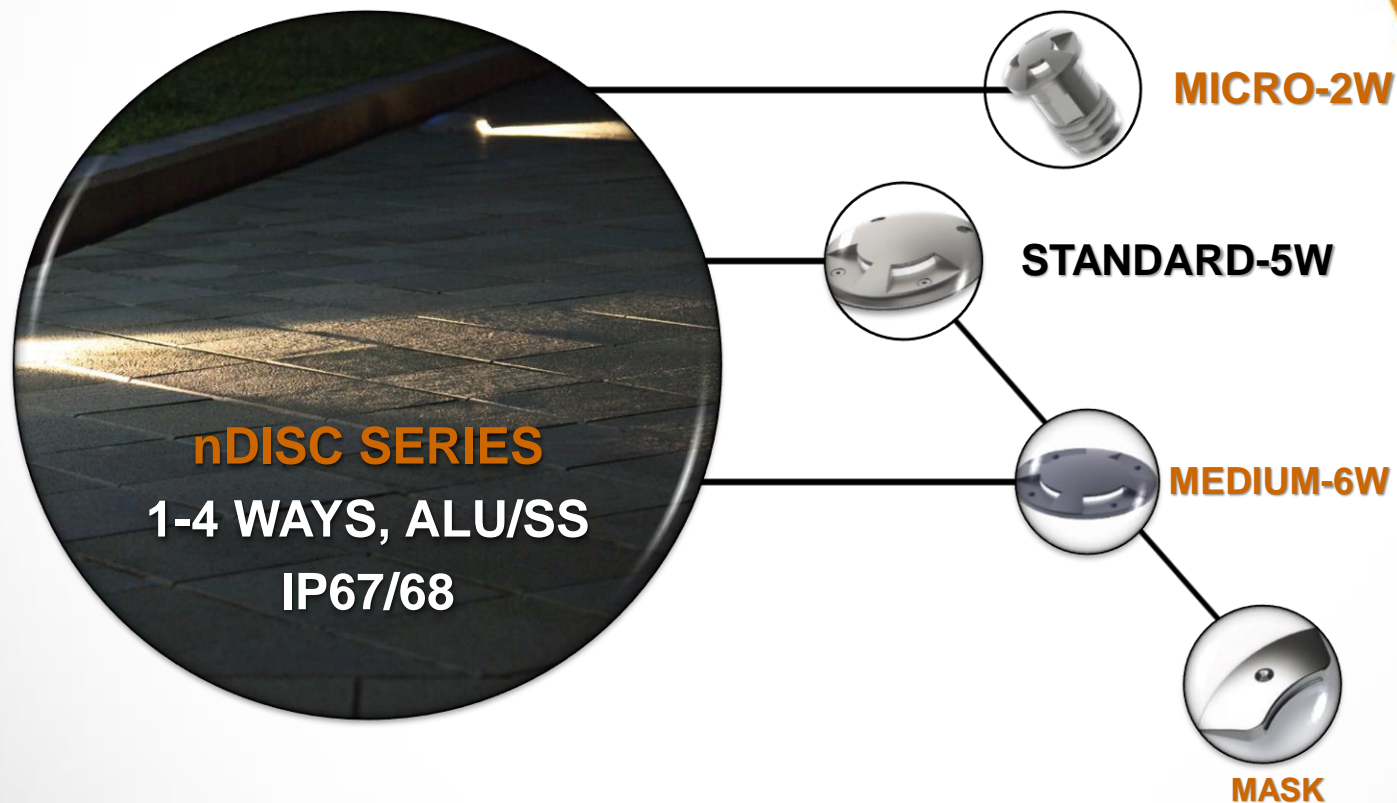
**ALU BODY**  
**SPIKE /  
PLATE ACC**  
**IP67**



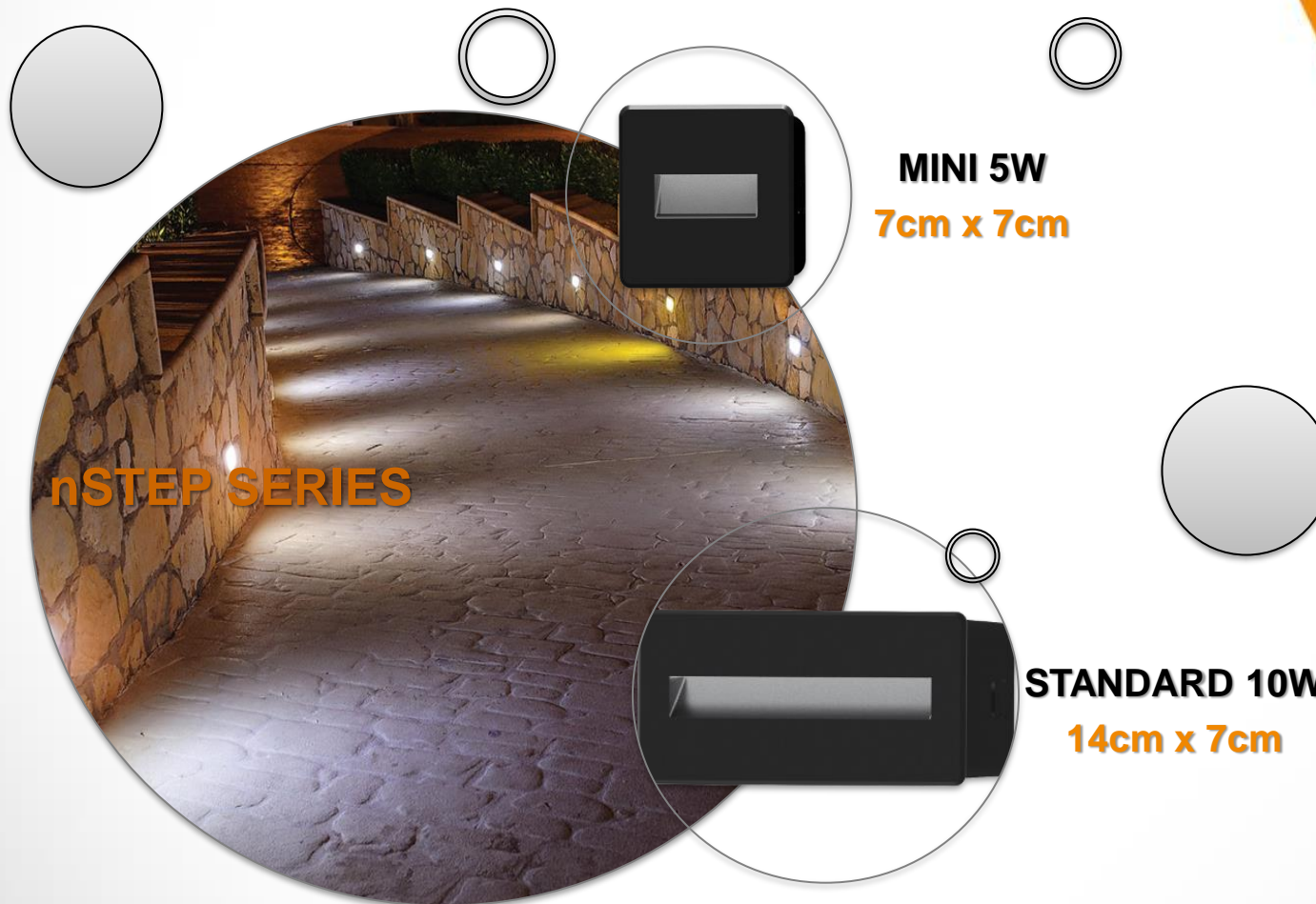
**ALU BODY**  
**PLATE**  
**IP67**



**ALU BODY**  
**PLATE**  
**IP67**











**POOL SERIES**  
(SS, IP68, LV, RGB)



**MICRO**  
(2W)



**STANDARD**  
(6W)



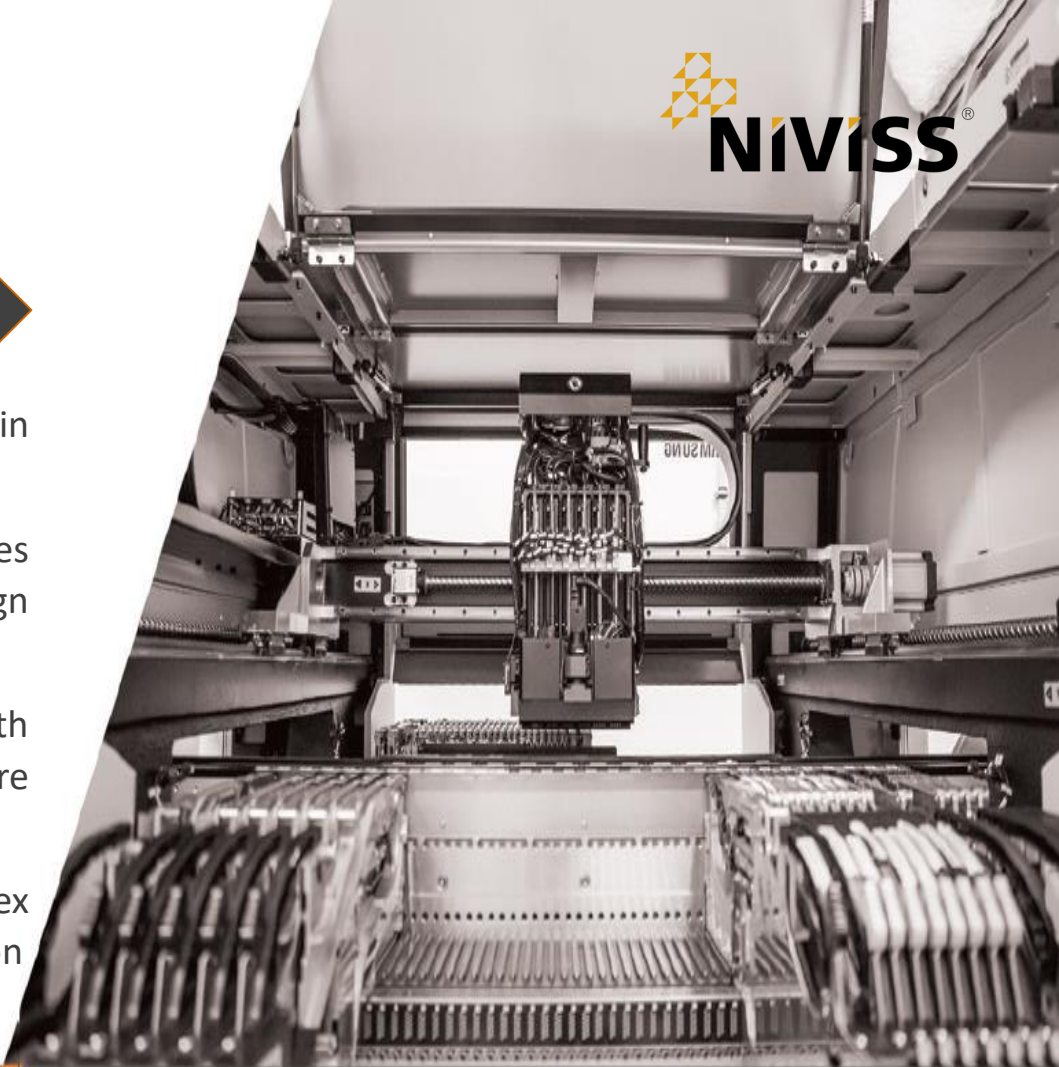
**MEDIUM**  
(18W)

## COMING PRODUCTS



### NIVISS REFLED

- ✓ New way of thinking in ground luminaries.
- ✓ New optics design combines modern luminaire design and eye safety properties.
- ✓ Luminaire equipped with REFLED active anti-glare patent pending system.
- ✓ High Color Rendering Index to enhance visual impression



## OUR PARTNERS



Niviss.com

010

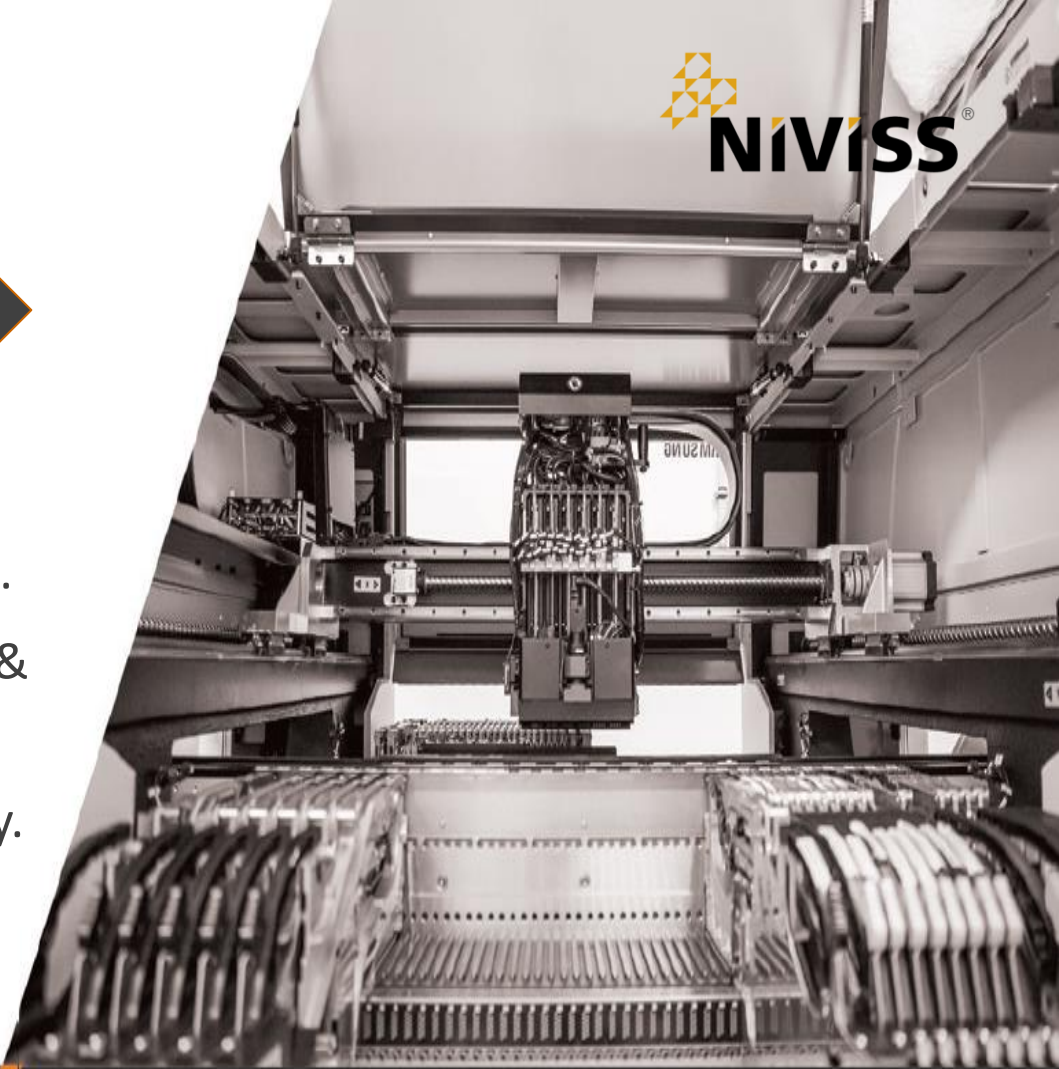


## COMING PRODUCTS



### Linear Wall Washer

- ✓ 3 different sizes.
- ✓ Various beam angles.
- ✓ Recessed inground & Wall mounted.
- ✓ Anti glare technology.



### OUR PARTNERS



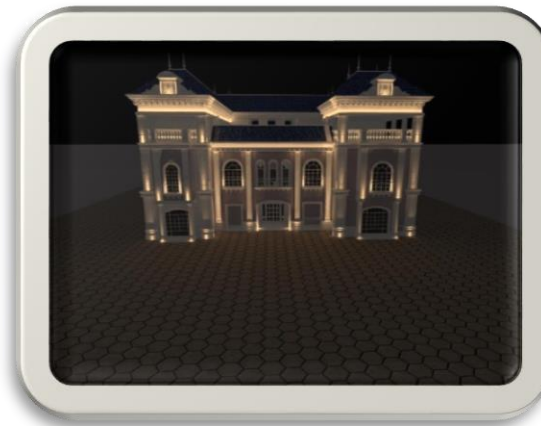
Niviss.com

011

## REFERENCES

### SAUDIA ARABIA

- ✓ SMC Hospital- Land Scape (Riyadh)
- ✓ Dr. Khaled Fakh Hospital (Riyadh)
- ✓ 50+ High end residential Projects and Villa including Royal family palaces.
- ✓ 5+ Mosques Façade light.



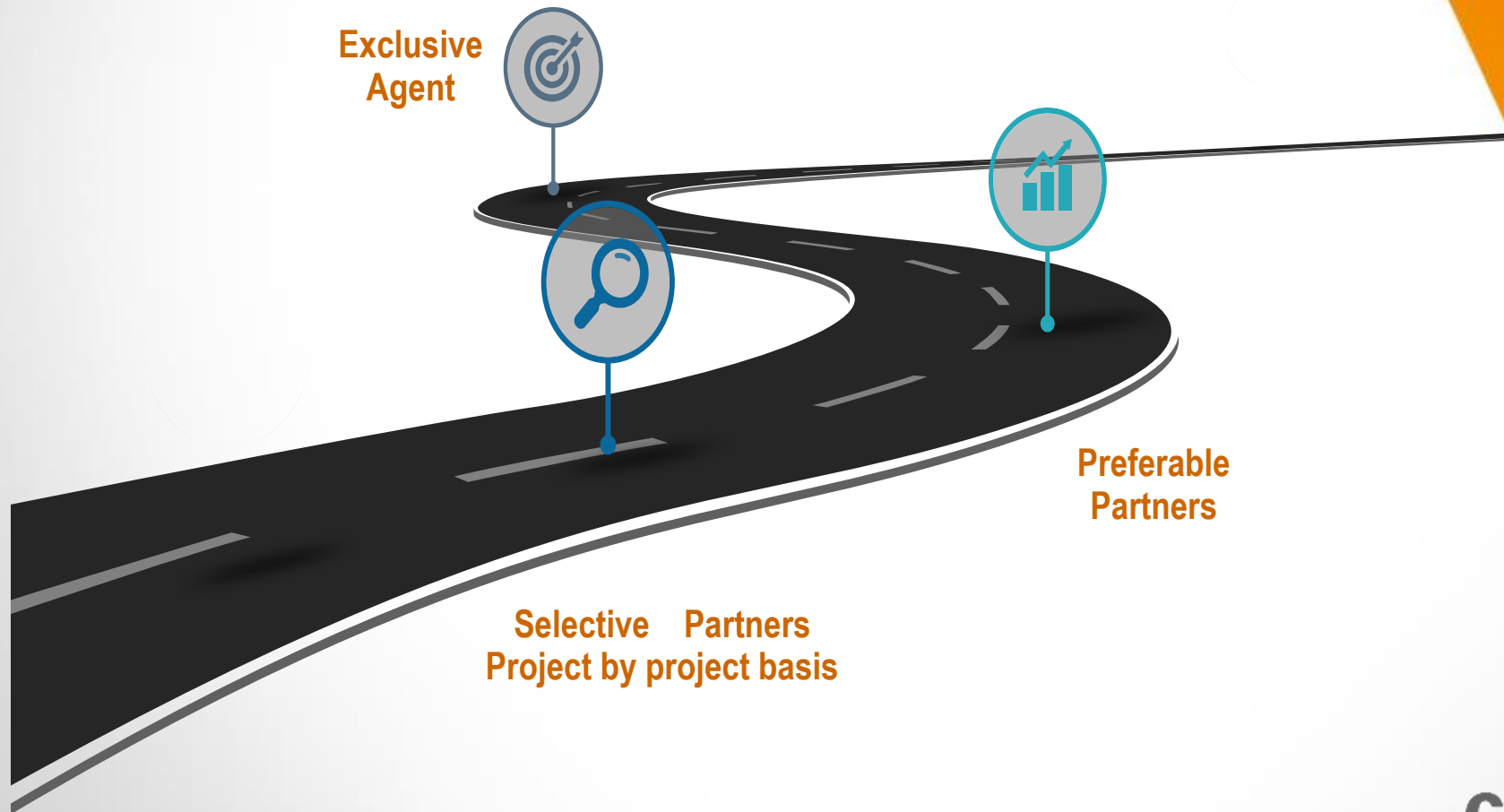


## FUTURE PLANS

### New Factor

- ✓ Starting from April 2021.
- ✓ 2 new SMT lines.
- ✓ AOI (System AOI Vi 5K Spectro).
- ✓ GLGONIO Spectrometer GLG\_20-1500.





- ✓ High quality components assure the highest quality of our products
- ✓ Competitive prices.
- ✓ Providing full technical and Sales support.
- ✓ Develop any custom module or fixture based on customer's requirements.
- ✓ 5 year warranty.



**CREE**   
► LED Solution Provider



Rdestowa 53D,  
81-577 Gdynia, Poland



+48 58 781 33 99  
+966 54 165 4847



[info@niviss.com](mailto:info@niviss.com)  
[jihad.Sarout@niviss.com](mailto:jihad.Sarout@niviss.com)



# Thank You