



NIVISS PHP Sp. z o.o. Sp.k.

ul. Rdestowa 53d
81-577 Gdynia, Poland

tel: **+48 58 781 33 99**

fax: **+48 58 622 47 66**

info@niviss.com

www.niviss.com

www.nivissground.com



CUSTOMISED LED SOLUTIONS

NIVISS is a modern, fast-growing company with extensive experience in the electronics industry. Since its inception, NIVISS specialises in the design and manufacture of products based on LEDs manufactured by CREE®. Our main focus is the highest quality of all offered solutions.

The company headquarters is located in Gdynia. Both the advanced technical base and modern organisational structure enabled NIVISS to obtain ISO Quality and Environmental Certificate. Our well-stocked warehouse ensures fast delivery of products ordered by customers mainly from lighting sector.



NIVISS comprehensively pursues the production process and simultaneously offers technical advice (selection of the LEDs, optics and driver), the design of LED-based products and their adjustment to the requirements of the customer and his application. The company manufactures LED products starting from large series orders and ending with small series of unusual ones. All NIVISS LED products are energy efficient and environmentally friendly.

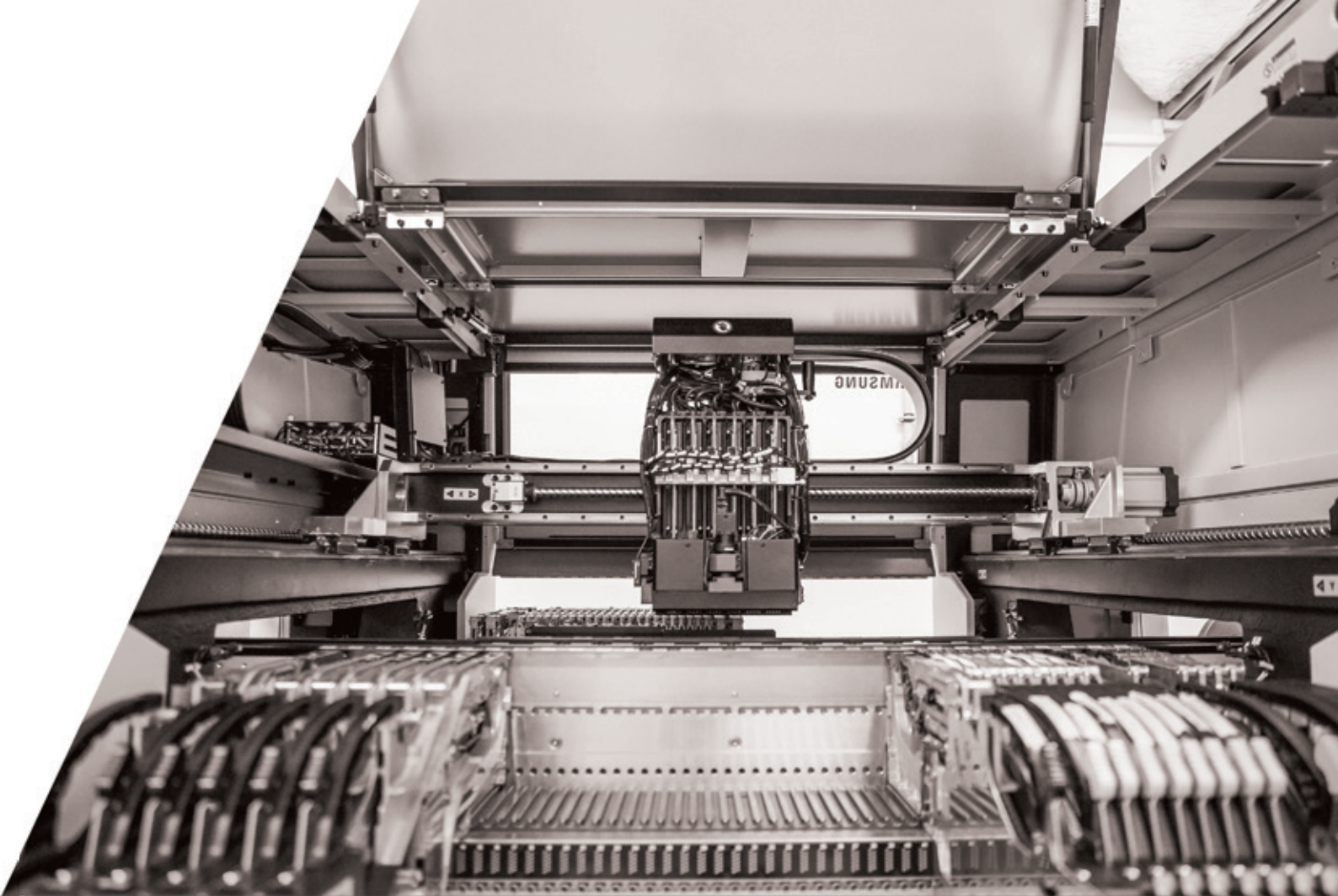
NIVISS offers a wide number of high quality LED-based products. All of them have a long warranty period and are manufactured in Poland. NIVISS owns a laboratory, which is indispensable before, during and after the production process.

As an exhibitor NIVISS is present at many trade shows such as Light + Building in Frankfurt or Light in Warsaw.

STRATEGY

Niviss Company's Strategy

- NIVISS specialises in the design and manufacture of products based on LEDs, focusing on solutions of very high quality.
- NIVISS implements the production process comprehensively. We provide technical consulting (choice of LEDs, optics, power supply and PCB), design of LED modules, drivers, housings and we adapt them to the requirements of a particular application.
- The company is able to provide both mass production, as well as smaller series of custom solutions implemented for a particular customer. All NIVISS products are energy efficient and environmentally friendly.
- NIVISS constantly improves and increases the qualifications of its employees by investing in its own laboratory, necessary for the production and testing of new LED solutions.
- The company's mission is to provide customers with high quality products of the XXI century.



OUR PARTNERS

CREE
LED Solution Provider

carclo
Optics

MW
MEAN WELL

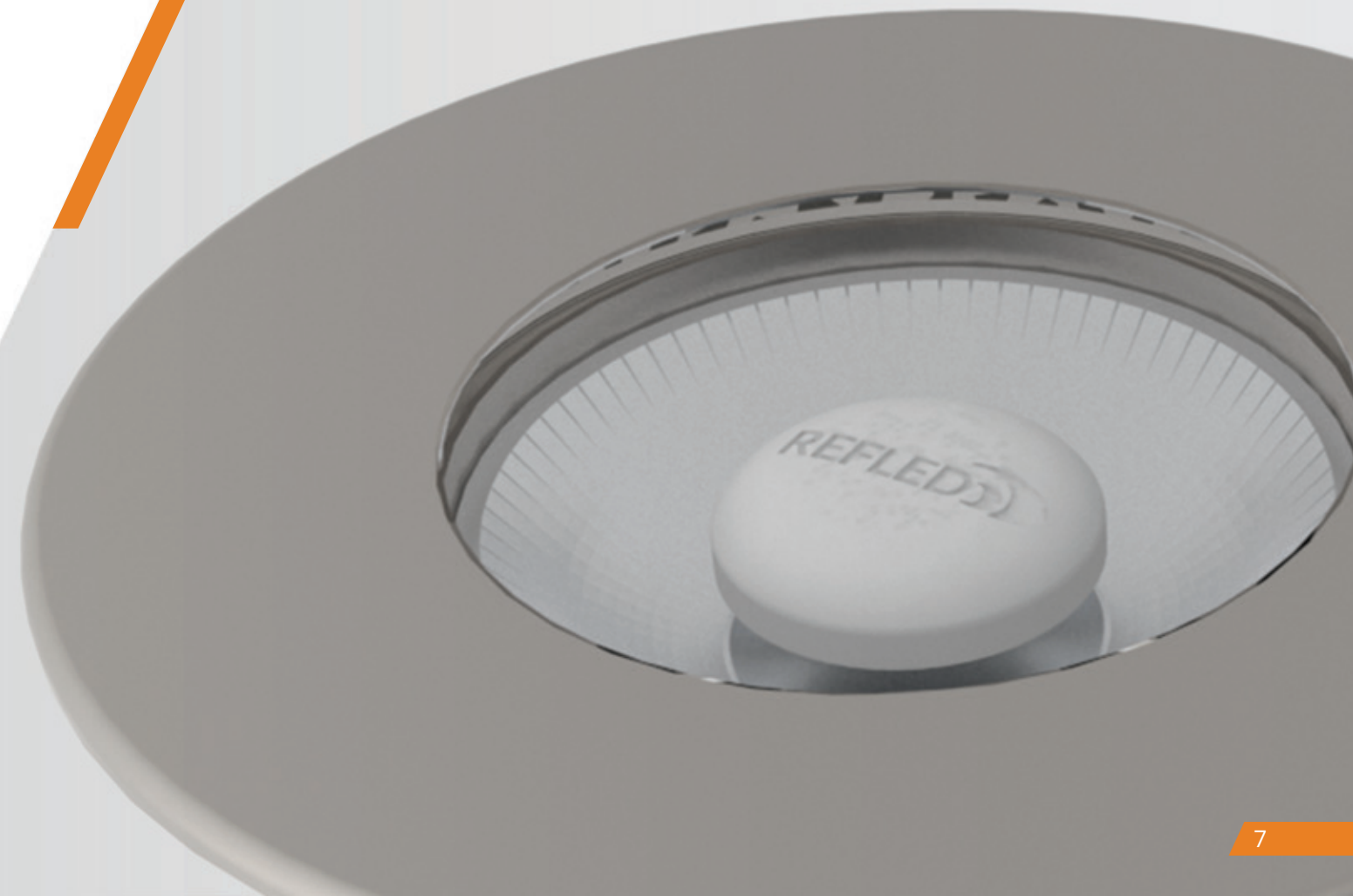
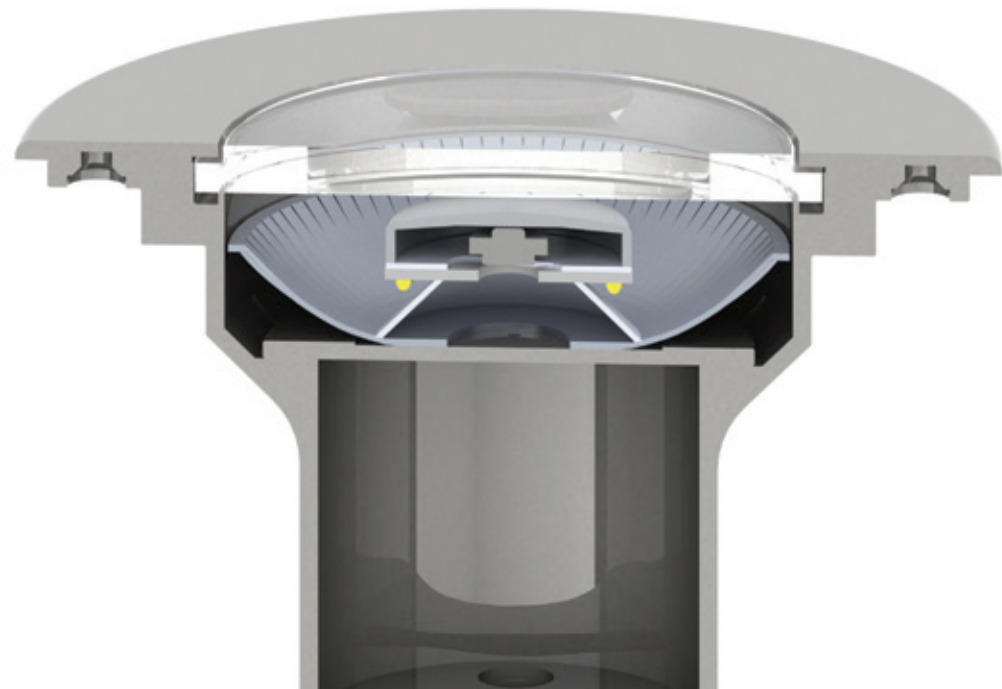
KHATOD
Optical Solutions for LED Lighting

LedLink
Linking LEDs to The Real World

NIVISS REFLED TECHNOLOGY

NIVISS REFLED technology is a new way of thinking in ground luminaires industry. New optics design combines modern luminaire design and eye safety properties. REFLED is safe for human eye. Luminaires equipped with **REFLED active anti glare** patent pending system reduce up to 100 times Luminance compare to standard ground luminaire. Using plug and play **REFLED magnet heating connection** patent pending system front of the luminaire may be 20% cooler compare to standard ground luminaire.

High Color Rendering Index is important in modern architecture to enhance visual impression.



PRODUCTS

10 - 29

Niviss Ground Series

Niviss Ground Nano LED	12
Niviss Ground Micro LED	14
Niviss Ground Mini LED	16
Niviss Ground Standard LED	18
Niviss Ground Medium LED	20
Niviss Ground Big LED	22
Niviss Ground Standard Premium LED	24
Niviss Ground Medium Premium LED	26
Niviss Ground Big Premium LED	28

30 - 37

Niviss nGround Series

Niviss nGround Standard LED	32
Niviss nGround Medium LED	34
Niviss nGround Big LED	36

38 - 45

Niviss nDisc Series

Niviss nDisc Micro LED	40
Niviss nDisc Standard LED	42
Niviss nDisc Medium LED	44

46 - 55

Niviss Ground Projectors

Niviss Ground Standard Projector LED	48
Niviss nGround Standard Projector LED	50
Niviss nGround Medium Projector LED	52
Niviss nGround Big Projector LED	54

56 - 61

Niviss nStep

Niviss nStep Mini LED	58
Niviss nStep Standard LED	60

62 - 71

Niviss RGB-W Solutions

Niviss Ground Micro RGBW LED	64
Niviss Ground Standard RGB LED	66
Niviss Ground Medium RGBW LED	68
Niviss Ground Big RGBW LED	70

72 - 79

Niviss Pool Series

Niviss Pool Micro LED	74
Niviss Pool Standard LED	76
Niviss Pool Medium LED	78



Niviss Ground light fixtures

The Ground series was designed using modern simulation methods in order to obtain the highest product quality. Ground series fixtures are made of top-quality materials such as marine grade steel, high-purity glass for optical applications, and modern CREE LEDs.

When planning an investment, it is a good idea to choose reliable fixtures having a long lifetime regardless of the weather conditions. This can be achieved with Niviss fixtures.

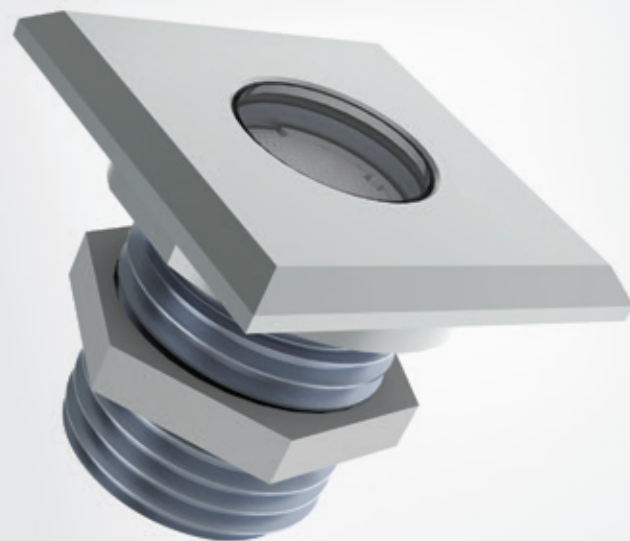
A photograph of a modern house at dusk. A concrete wall runs along the side of the property, and a lawn is in the foreground. Several Niviss Ground light fixtures are installed in the lawn, casting a warm glow. The house has large windows and a balcony, and its interior lights are on. The sky is a mix of blue and orange from the setting sun.

Niviss Ground
light fixtures >

Niviss Ground Nano LED

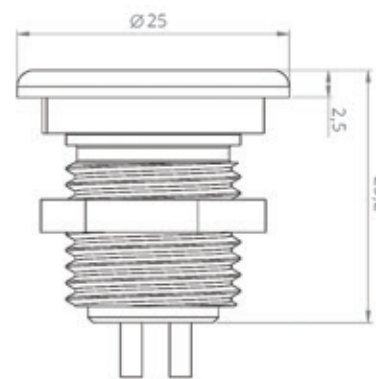
01. Ground

- based on CREE® LEDs
- max 700 mA
- Made of 316L steel
- Power: max 2W
- IP68 with sealing set
- 5-year warranty
- Round or square front
- Also available with an aluminium body



The Niviss Ground Nano fixture can be used for lighting many places and objects such as:

- saunas and SPA
- bathrooms
- kitchens
- gardens
- terraces
- stair lights



Light Colour	Comfort White	Warm White	Neutral White	Cool White
Colour Temperature*	2700 ± 150 K	3000 ± 150 K	4000 ± 250 K	5000 ± 250 K
Effective Lumen Output**	215 lm	215 lm	230 lm	245 lm
CRI*	≥ 80			
Viewing Angle [FWHM]	15°, 30°, 60°			
Constant Current	max 700 mA			
Power Consumption	max 2 W			
Operating Temperature.	-20°C ÷ +55°C			
Dimensions	Ø25mm			
IP Rating	IP67 front, IP 64 back, IP68 with sealing set			
Dimming***	YES			
Lifetime****	≥ 60 000 h			

* Other CRI, CCTs and colours available on request.

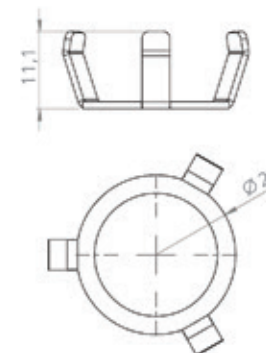
** Source performance in real-life conditions at $T_a=25^{\circ}\text{C}$; includes optical losses; the tolerance of source lumen output is 10%.

*** Depends on power supply

**** Approximate lifetime of LEDs declared by Cree® at Ta=25°C (for 80% of initial light output) and other electronic components.

/ Accessories

NANO-SPRING-1



NANO-KIT IP 68



/ Order code format

Order code format

		15 - 15 degrees 30 - 30 degrees 60 - 60 degrees	SS - Steel front and body AA - Aluminium front and body
	POWER	FWHM ANGLE	MATERIAL OF THE FRONT / BODY
G R O U N D	N A N O - 2 - V W - 1 5 - S Q - S S - C C		
FAMILY	CCT VW - 2700K WW - 3000K NW - 4000K CW - 5000K	FRONT PLATE SQ - Square RD - Round	TYPE OF POWER SUPPLY CC - Constant current (max 700 mA)

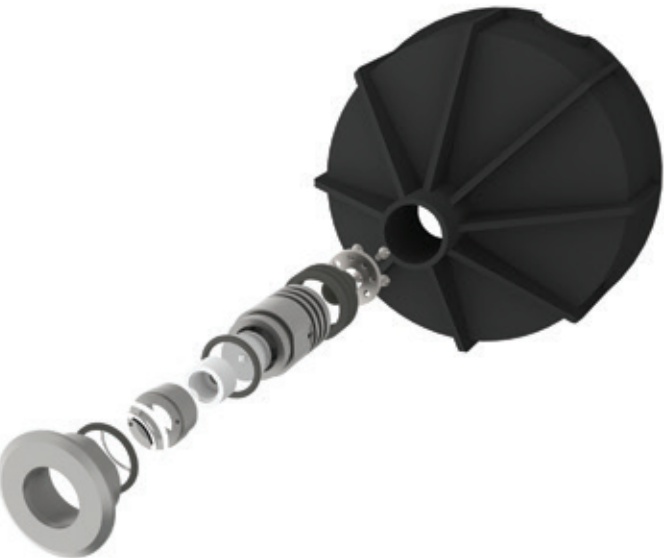
Niviss Ground Micro LED

01. Ground

- Based on CREE® LEDs
- 12V/24V DC
- Made of 316L steel
- Power: 2.5W (on request: 1.5W)
- IP68
- 5-year warranty
- Round or square front

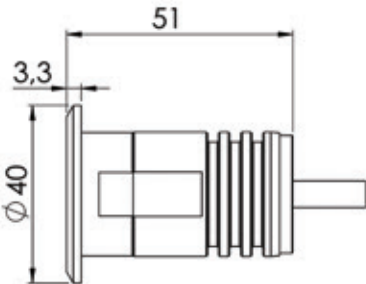


CREE 
► LED Solution Provider



The Niviss Ground Micro fixture can be used for lighting many places and objects such as:

- saunas and SPA
- garden ponds
- gardens
- stair lights
- terraces
- squares

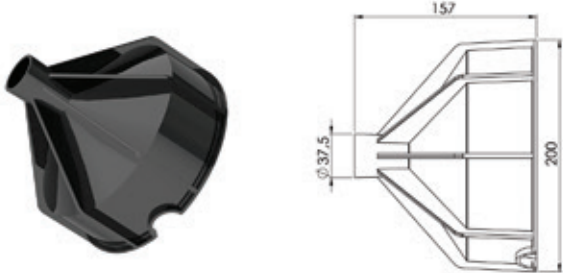


LIGHT COLOUR	AMBER WHITE	COMFORT WHITE	WARM WHITE	NEUTRAL WHITE	COOL WHITE
Colour Temperature*	2200 ± 150 K	2700 ± 150 K	3000 ± 150 K	4000 ± 250 K	5000 ± 250 K
Effective Lumen Output**	140 lm	170 lm	180 lm	195 lm	205 lm
CRI	≥ 80				
Viewing Angle [FWHM]	17°, 31°, 39°				
Input Voltage	12V/24V DC				
Power Consumption	2.5W				
Operating Temperature	-20°C ÷ +55°C				
Dimensions	Ø40mm				
IP Rating	IP 68				
Lifetime***	≥ 60 000 h				

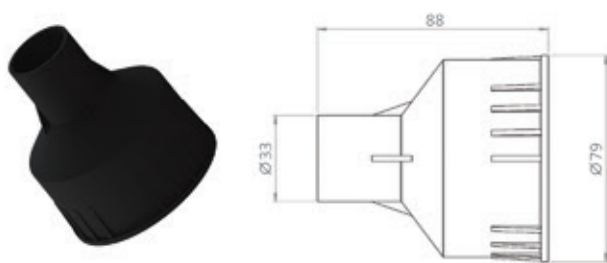
* Other CCTs and colours available on request.
** Source performance in real-life conditions at Ta=25°C; includes optical losses; the tolerance of source lumen output is 10%.
*** Approximate lifetime of LEDs declared by Cree® at Ta=25°C (for 80% of initial light output) and other electronic components.

/ Accessories

■ GROUND-MICRO-ABS-1



■ GROUND-MICRO-ABS-2



/ Order code format

		17 - 17 degrees	
		31 - 31 degrees	
		39 - 39 degrees	SS - Steel front and body
	POWER	FWHM ANGLE	MATERIAL OF THE FRONT / BODY
GROUND MICRO - 2 - VW - 17 - SQ - SS - LV			
FAMILY	CCT	FRONT PLATE	SUPPLY VOLTAGE
	AW - 2200K	SQ - Square	LV - 12V/24V DC
	VW - 2700K	RD - Round	
	WW - 3000K		
	NW - 4000K		
	CW - 5000K		

Niviss Ground Mini LED

01. Ground

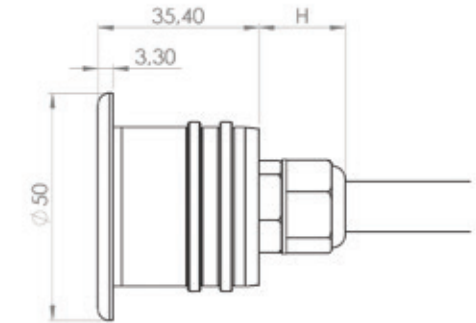
- Based on CREE® LEDs
- 12/24V DC
- Made of 316L steel
- Power: 3.5W (on request: 2W)
- IP68
- 5-year warranty
- Round or square front



CREE
LED Solution Provider

The Niviss Ground Mini fixture can be used for lighting many places and objects such as

- recreation areas
- gardens
- saunas
- terraces
- garden ponds
- squares

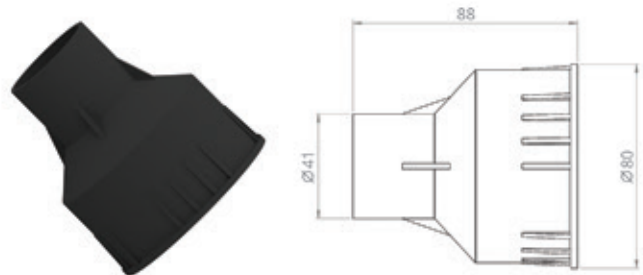


LIGHT COLOUR	COMFORT WHITE	WARM WHITE	NEUTRAL WHITE	COOL WHITE
Colour Temperature*	2700 ± 150 K	3000 ± 150 K	4000 ± 250 K	5000 ± 250 K
Effective Lumen Output**	195 lm	215 lm	215 lm	230 lm
CRI	≥ 80	≥ 80	≥ 80	≥ 73
Viewing Angle [FWHM]	15°, 27°, 43°			
Input Voltage	12V/24V DC			
Power Consumption	3.5 W			
Operating Temperature	-20°C ÷ +55°C			
Dimensions	Ø50mm			
IP Rating	IP68			
Lifetime***	≥ 35 000 h			

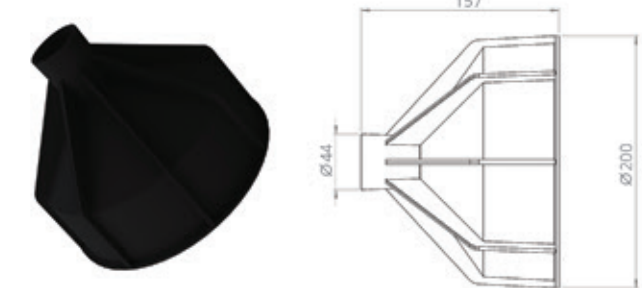
* Other CCTs and colours available on request.
** Source performance in real-life conditions at Ta=25°C; includes optical losses; the tolerance of source lumen output is 10%.
*** Approximate lifetime of LEDs declared by Cree® at Ta=25°C (for 80% of initial light output) and other electronic components.

Accessories

GROUND-MINI-ABS-1



GROUND-MINI-ABS-2



Order code format

FAMILY	POWER	FWHM ANGLE	FRONT PLATE	SUPPLY VOLTAGE
GROUND MINI - 3 - VW - 15 - SQ - SS - LV	CCT VW - 2700K WW - 3000K NW - 4000K CW - 5000K	15 - 15 degrees 27 - 27 degrees 43 - 43 degrees	SQ - Square RD - Round	LV - 12V/24V DC

Niviss Ground Standard LED

01. Ground

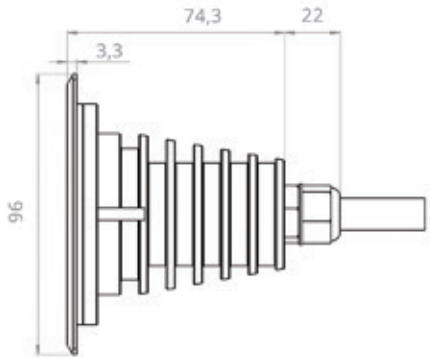


- Based on CREE® LEDs
- 230V AC / 12-24V on request
- Made of 316L steel
- Power: 7W / 6W
- IP67 / IP68
- 5-year warranty
- Round or square front
- Also available with an aluminium body



The Niviss Ground Standard fixture can be used for lighting many places and objects such as:

- parks
- gardens
- terraces
- squares
- premises
- plants



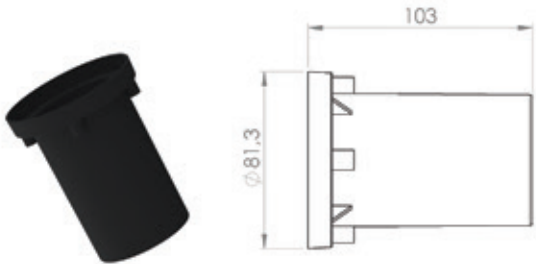
LIGHT COLOUR	AMBER WHITE	COMFORT WHITE	WARM WHITE	NEUTRAL WHITE	COOL WHITE
Colour Temperature*	2200 ± 150 K	2700 ± 150 K	3000 ± 150 K	4000 ± 250 K	5000 ± 250 K
Effective Lumen Output**	400 lm	535 lm	535 lm	570 lm	610 lm
CRI	≥ 80				
Viewing Angle [FWHM]	10°****, 30°, 50°				
Input Voltage	230V AC 50Hz / 12V/24V DC				
Power Consumption	7W / 6W				
Operating Temperature	-20°C ÷ +55°C				
Dimensions	Ø96mm				
IP Rating	IP67 / IP68				
Lifetime***	≥ 60 000 h				

* Other CRI, CCTs and colours available on request.
** Source performance in real-life conditions at Ta=25°C; includes optical losses; the tolerance of source lumen output is 10%.
*** Approximate lifetime of LEDs declared by Cree® at Ta=25°C (for 90% of initial light output) and other electronic components
**** Reduced Effective Lumen Output

Accessories

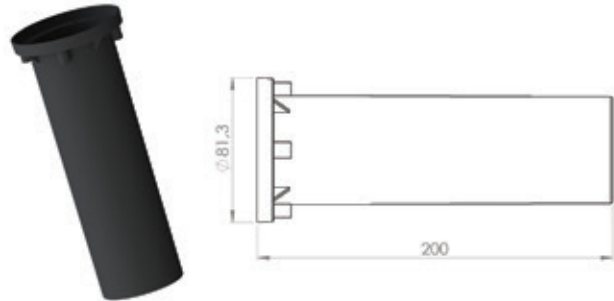
GROUND-STANDARD-ABS-1

ABS Mounting pot 103 mm



GROUND-STANDARD-ABS-2

ABS Mounting pot 200 mm



Order code format

FAMILY	POWER	FWHM ANGLE	FRONT PLATE	SUPPLY VOLTAGE
GROUND STANDARD - 7 -	CCT	10 - 10 degrees	SA - Steel front and aluminium body	
	AW - 2200K	30 - 30 degrees	SS - Steel front and body	
	VW - 2700K	50 - 50 degrees		
	WW - 3000K			
	NW - 4000K			
- VW -	CW - 5000K			
- 30 -				
- SQ -				
- SA -				
- HV				

Niviss Ground Medium LED

CREE
LED Solution Provider

01. Ground

- Based on CREE® LEDs
- 230V AC / 12-24V on request
- Made of 316L steel
- Power: 20W
- IP67 / IP68
- 5-year warranty
- Round or square front
- Also available with an aluminium body

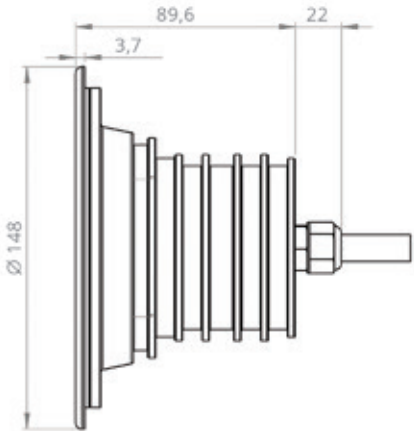


The Niviss Ground Medium fixture can be used for lighting many places and objects such as:

- parks
 - gardens
 - squares
- premises
 - plants
 - exterior walls

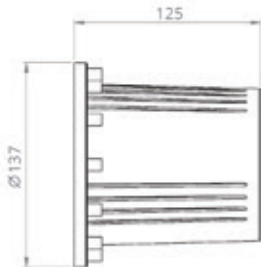
LIGHT COLOUR	COMFORT WHITE	WARM WHITE	NEUTRAL WHITE	COOL WHITE
Colour Temperature*	2700 ± 150 K	3000 ± 150 K	4000 ± 250 K	5000 ± 250 K
Effective Lumen Output**	1450 lm	1550 lm	1650 lm	1765 lm
Effective Lumen Output COB Version**	1150 lm	1300 lm	1400 lm	1400 lm
CRI	≥ 80			
Viewing Angle [FWHM]	25°, 50° / 10°, 20° COB Version			
Input Voltage	230V AC 50Hz / 12V/24V DC			
Power Consumption	20W / 18W			
Operating Temperature	-20°C ÷ +55°C			
Dimensions	Ø148mm			
IP Rating	IP67 / IP68			
Lifetime***	≥ 60 000 h			

* Other CRI, CCTs and colours available on request.
** Source performance in real-life conditions at Ta=25°C; includes optical losses; the tolerance of source lumen output is 10%.
*** Approximate lifetime of LEDs declared by Cree® at Ta=25°C (for 80% of initial light output) and other electronic components.



Accessories

GROUND-MEDIUM-ABS



Order code format

FAMILY	POWER	FRONT PLATE	SUPPLY VOLTAGE
GROUND MEDIUM	CCT	SQ - Square RD - Round	LV - 12V/24V DC HV - 230V AC, 50 Hz
	VW - 2700K		
	WW - 3000K		
	NW - 4000K		
	CW - 5000K		

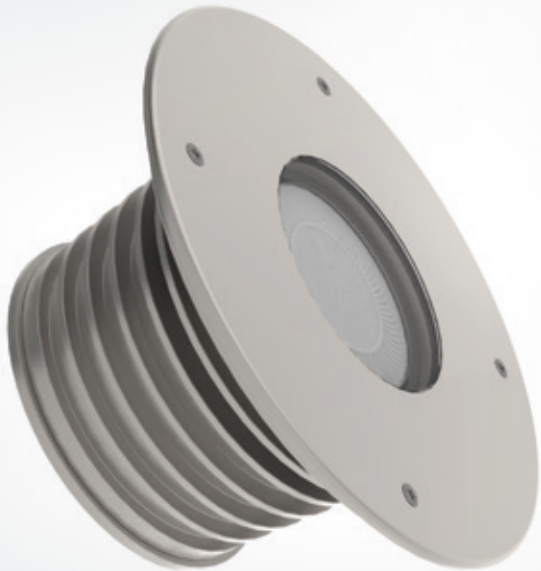
10 - 10 degrees
20 - 20 degrees
25 - 25 degrees
50 - 50 degrees
FWHM ANGLE

SS - Steel front and body
SA - Steel front, Aluminium body
MATERIAL OF THE FRONT / BODY

Niviss Ground Big LED

01. Ground

- Based on CREE® LEDs
- 230V AC / 12-24V on request
- Made of 316L steel
- Power: 33W
- IP67 / IP68
- 5-year warranty
- Round or square front



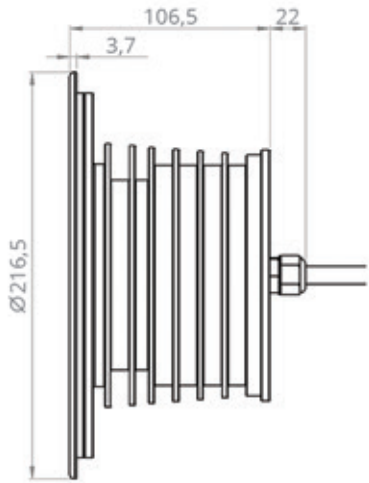
The Niviss Ground Big fixture can be used for lighting many places and objects such as

- gardens
- exterior walls
- parks
- squares



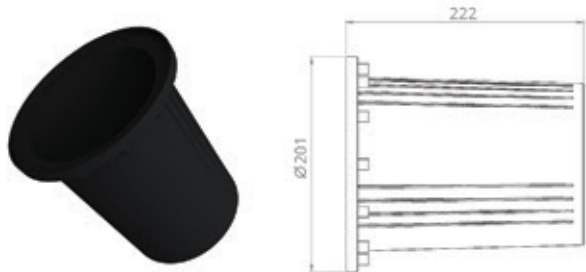
LIGHT COLOUR	COMFORT WHITE	WARM WHITE	NEUTRAL WHITE	COOL WHITE
Colour Temperature	2700 ± 150 K	3000 ± 150 K	4000 ± 250 K	5000 ± 250 K
Effective Lumen Output*	3450 lm	3850 lm	4370 lm	4370 lm
CRI	≥ 80			
Viewing Angle [FWHM]	25°, 38°			
Input Voltage	230V AC 50Hz / 12V/24V DC			
Power Consumption	33W / 30W			
Operating Temperature	-20°C ÷ +55°C			
Dimensions	Ø216,5mm			
IP Rating	IP67 / IP68			
Lifetime**	≥ 55 000 h			

* Other CRI, CCTs and colours available on request.
** Source performance in real-life conditions at Ta=25°C; includes optical losses; the tolerance of source lumen output is 10%.
*** Approximate lifetime of LEDs declared by Cree® at Ta=25°C (for 90% of initial light output) and other electronic components.



/ Accessories

■ GROUND-BIG-ABS-1



/ Order code format

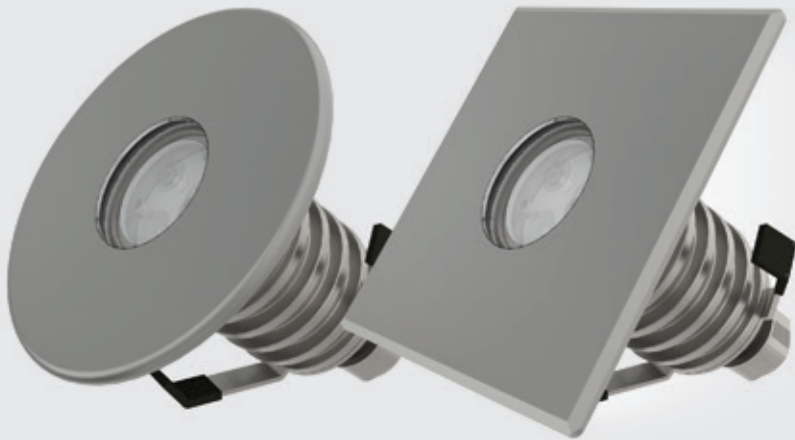
FAMILY	POWER	FRONT PLATE	SUPPLY VOLTAGE
GROUND BIG - 35 - VW - 24 - SQ - SA - HV	25 - 25 degrees 38 - 38 degrees FWHM ANGLE	SS - Steel front and body SA - Steel front, Aluminium body MATERIAL OF THE FRONT / BODY	
	CCT VW - 2700K WW - 3000K NW - 4000K CW - 5000K	SQ - Square RD - Round	LV - 12V/24V DC HV - 230V AC, 50 Hz

Niviss Ground Standard Premium

01. Ground Premium

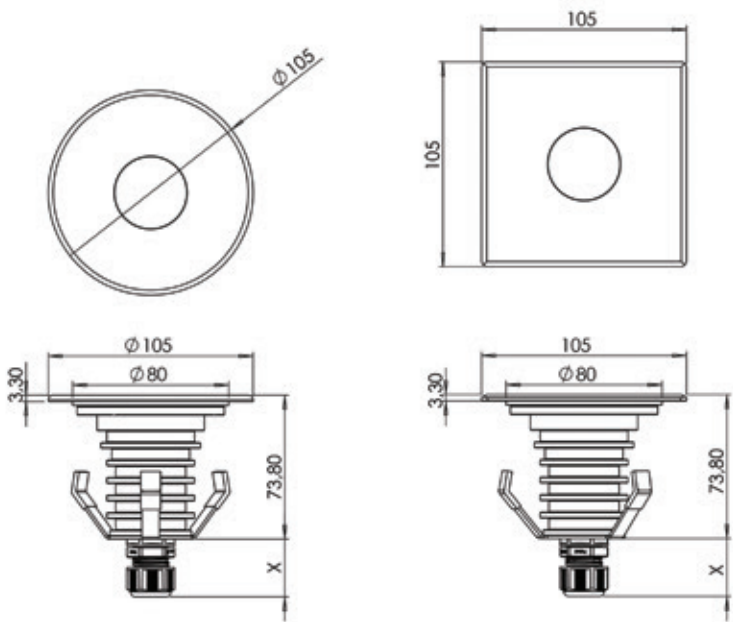
- Based on CREE® LEDs
- 230V AC / IP67
- 12-24V / IP68
- Made of 316L steel
- Power: 7W / 6W
- 5-year warranty
- CRI ≥ 80, ≥ 90 on request
- Round or square front
- Also available with an aluminum body
- Fits with DN90 pipe

CREE
LED Solution Provider



The Niviss Ground Standard Premium fixture can be used for lighting many places and objects such as:

- parks
- gardens
- terraces
- squares
- premises
- plants



LIGHT COLOUR	AMBER WHITE	COMFORT WHITE	WARM WHITE	NEUTRAL WHITE	COOL WHITE
Colour Temperature*	2200 ± 150 K	2700 ± 150 K	3000 ± 150 K	4000 ± 250 K	5000 ± 250 K
Effective Lumen Output**	400 lm	535 lm	535 lm	570 lm	610 lm
CRI	≥ 80				
Viewing Angle [FWHM]	10°****, 30°, 50°				
Input Voltage	230V AC 50Hz / 12V/24V DC				
Power Consumption	7W / 6W				
Operating Temperature	-20°C ÷ +55°C				
Dimensions	Ø96mm				
IP Rating	IP67 / IP68				
Lifetime***	≥ 60 000 h				

* Other CRI, CCTs and colours available on request.
** Source performance in real-life conditions at Ta=25°C; includes optical losses; the tolerance of source lumen output is 10%.
*** Approximate lifetime of LEDs declared by Cree® at Ta=25°C (for 90% of initial light output) and other electronic components
**** Reduced Effective Lumen Output

Electrical Installation



Connecting to the power supply should be done when the power supply is off.

Order code format

GROUND STANDARD PREMIUM - 7 - VW - 30 - SQ - SA - LV			
FAMILY	LV - 6 W HV - 7 W POWER	30 - 30 degrees 50 - 50 degrees FWHM ANGLE	SA - Steel front and aluminum body SS - Steel front and body MATERIAL OF THE FRONT / BODY
	CCT	FRONT PLATE	SUPPLY VOLTAGE
	AW - 2200K	SQ - Square	LV - 12V/24V DC
	VW - 2700K	RD - Round	HV - 230V AC, 50Hz
	WW - 3000K		
	NW - 4000K		
	CW - 5000K		

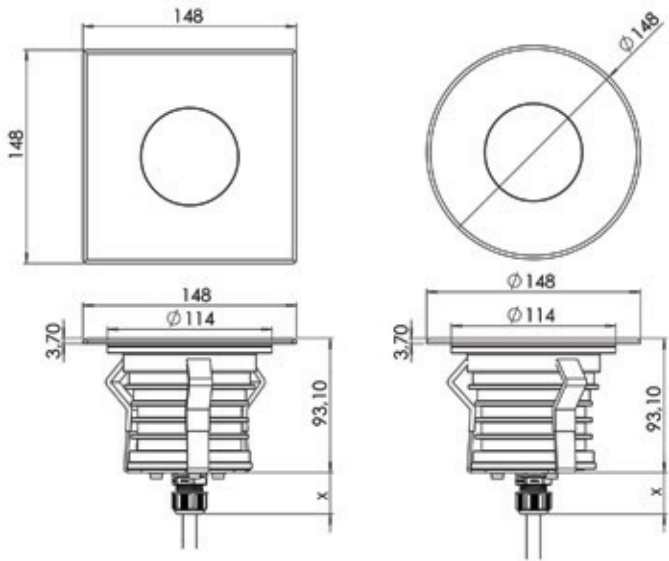
Niviss Ground Medium Premium

01. Ground Premium

- Based on CREE® LEDs
- 230V AC / IP67
- 12-24V / IP68
- Made of 316L steel
- Power: 20W / 18W
- 5-year warranty
- CRI ≥ 80, ≥ 90 on request
- Round or square front
- Also available with an aluminum body
- Fits with DN125 Pipe

The Niviss Ground Medium Premium fixture can be used for lighting many places and objects such as:

- parks
- gardens
- squares
- premises
- plants
- exterior walls



CREE
LED Solution Provider

LIGHT COLOUR	COMFORT WHITE	WARM WHITE	NEUTRAL WHITE	COOL WHITE
Colour Temperature*	2700 ± 150 K	3000 ± 150 K	4000 ± 250 K	5000 ± 250 K
Effective Lumen Output**	1450 lm	1550 lm	1650 lm	1765 lm
Effective Lumen Output COB Version**	1150 lm	1300 lm	1400 lm	1400 lm
CRI	≥ 80			
Viewing Angle [FWHM]	25°, 50° / 10°, 20° COB Version			
Input Voltage	230V AC 50Hz / 12V/24V DC			
Power Consumption	20W / 18W			
Operating Temperature	-20°C ÷ +55°C			
Dimensions	Ø148mm			
IP Rating	IP67 / IP68			
Lifetime***	≥ 60 000 h			

* Other CRI, CCTs and colours available on request.
** Source performance in real-life conditions at Ta=25°C; includes optical losses; the tolerance of source lumen output is 10%.
*** Approximate lifetime of LEDs declared by Cree® at Ta=25°C (for 80% of initial light output) and other electronic components.

Electrical Installation



Connecting to the power supply should be done when the power supply is off.

Order code format

FAMILY	LV - 18 W HV - 20 W POWER	25 - 25 degrees 50 - 50 degrees FWHM ANGLE	SA - Steel front and aluminum body SS - Steel front and body MATERIAL OF THE FRONT / BODY
	CCT VW - 2700K WW - 3000K NW - 4000K CW - 5000K	FRONT PLATE SQ - Square RD - Round	SUPPLY VOLTAGE LV - 12V/24V DC HV - 230V AC, 50Hz
GROUND MEDIUM PREMIUM - 20 - VW - 25 - SQ - SA - LV			

Niviss Ground Big Premium

01. Ground Premium



CREE 
► LED Solution Provider

- Based on CREE® LEDs
- 230V AC / 12-24V on request
- Made of 316L steel
- Power: 33W
- IP67 / IP68
- 5-year warranty
- Round or square front
- Also available with an aluminium body
- Fits with DN160 Pipe

LIGHT COLOUR	COMFORT WHITE	WARM WHITE	NEUTRAL WHITE	COOL WHITE
Colour Temperature	2700 ± 150 K	3000 ± 150 K	4000 ± 250 K	5000 ± 250 K
Effective Lumen Output*	3450 lm	3850 lm	4370 lm	4370 lm
CRI	≥ 80			
Viewing Angle [FWHM]	25°, 38°			
Input Voltage	230V AC 50Hz / 12V/24V DC			
Power Consumption	33W / 30W			
Operating Temperature	-20°C ÷ +55°C			
Dimensions	Ø216,5mm			
IP Rating	IP67 / IP68			
Lifetime**	≥ 55 000 h			

* Other CRI, CCTs and colours available on request.
** Source performance in real-life conditions at Ta=25°C; includes optical losses; the tolerance of source lumen output is 10%.
*** Approximate lifetime of LEDs declared by Cree® at Ta=25°C (for 90% of initial light output) and other electronic components.

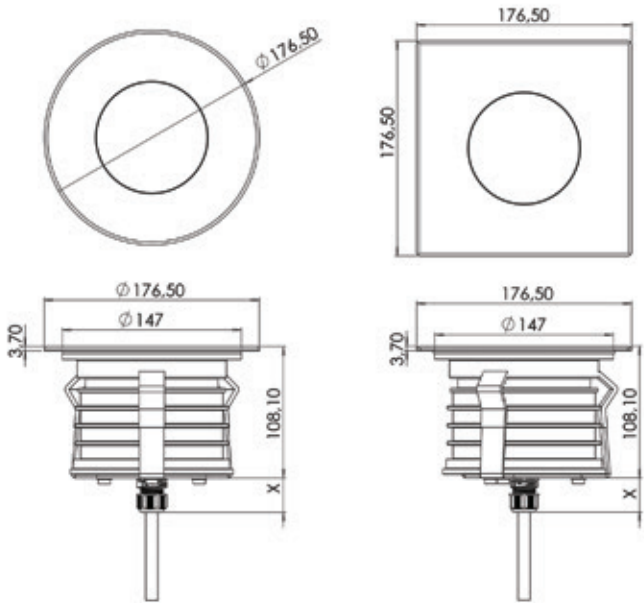
/ Electrical Installation



Connecting to the power supply should be done when the power supply is off.

The Niviss Ground Big Premium fixture can be used for lighting many places and objects such as:

- gardens
- parks
- exterior walls
- quares



/ Order code format

POWER	FWHM ANGLE	MATERIAL OF THE FRONT / BODY	GROUND BIG PREMIUM - 33 - VW - 25 - SQ - SA - LV		
			FAMILY	CCT	SUPPLY VOLTAGE
LV - 30 W	25 - 25 degrees	SA - Steel front and aluminum body		VW - 2700K	LV - 12V/24V DC
HV - 33 W	38 - 38 degrees	SS - Steel front and body		WW - 3000K	HV - 230V AC, 50Hz
				NW - 4000K	
				CW - 5000K	
				FRONT PLATE	
				SQ - Square	
				RD - Round	

Niviss nGround light fixtures

The nGround series was designed for the most demanding customers who seek non-standard solutions.

The fixture body is made of cast aluminium, which enabled a considerable weight reduction, making it much easier to install the fixture in the ground.

The fixtures are perfect for illuminating garden or park spaces. Due to their lightweight structure, they can be easily installed on exterior walls.

When planning an investment, it is a good idea to choose reliable fixtures having a long lifetime regardless of the weather conditions. This can be achieved with Niviss fixtures.



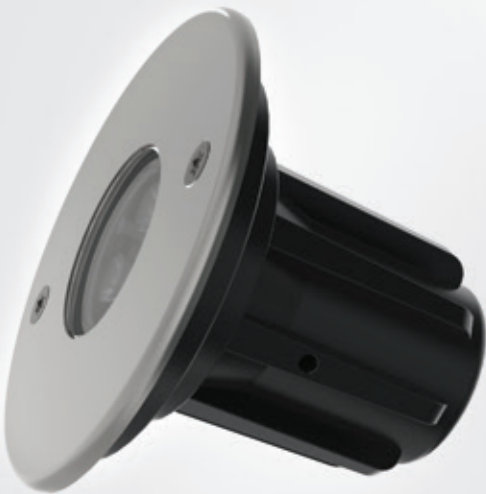
Niviss nGround
light fixtures >

Niviss nGround Standard LED

CREE
LED Solution Provider

02. nGround Series

- Based on CREE® LEDs
- 230V AC
- Made of aluminium, front of 316L steel
- Power: 5W
- IP67
- 5-year warranty



The Niviss nGround Standard fixture can be used for lighting many places and objects such as:

- parks
 - gardens
 - terraces
- squares
 - premises
 - plants

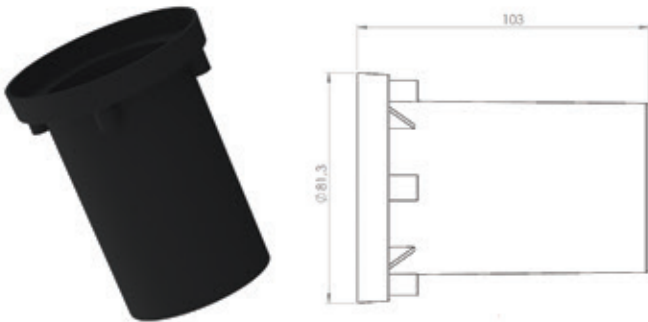
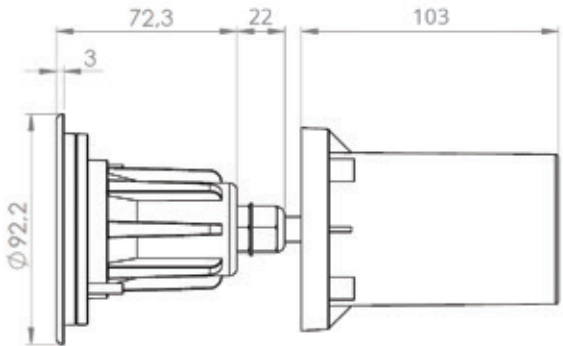


LIGHT COLOUR	COMFORT WHITE	WARM WHITE	NEUTRAL WHITE	COOL WHITE
Colour Temperature	2700 ± 150 K	3000 ± 150 K	4000 ± 250 K	5000 ± 250 K
Effective Lumen Output*	395 lm	395 lm	420 lm	450 lm
CRI	≥ 80			
Viewing Angle [FWHM]	25°, 45°			
Input Voltage	230V AC 50Hz			
Power Consumption	5 W			
Operating Temperature	-20°C ÷ +55°C			
Dimensions	Ø92,2mm			
IP Rating	IP67			
Lifetime**	≥ 60 000 h			

* Other CRI, CCTs and colours available on request.
** Source performance in real-life conditions at Ta=25°C; includes optical losses; the tolerance of source lumen output is 10%.
*** Approximate lifetime of LEDs declared by Cree® at Ta=25°C (for 80% of initial light output) and other electronic components.

Accessories

GROUND-STANDARD-ABS-1



Order code format

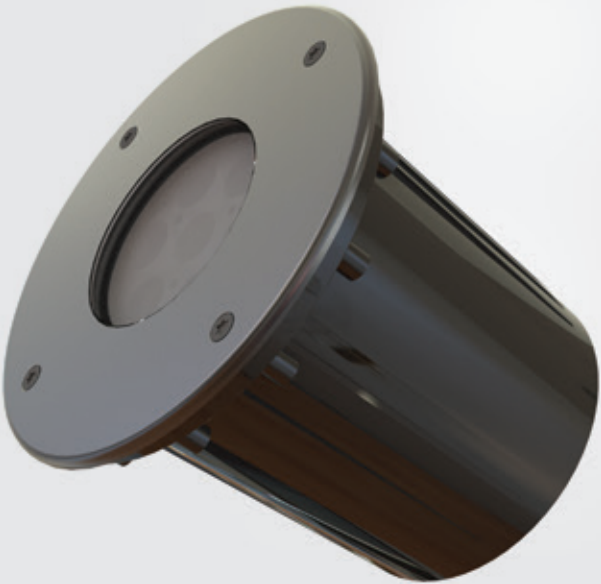
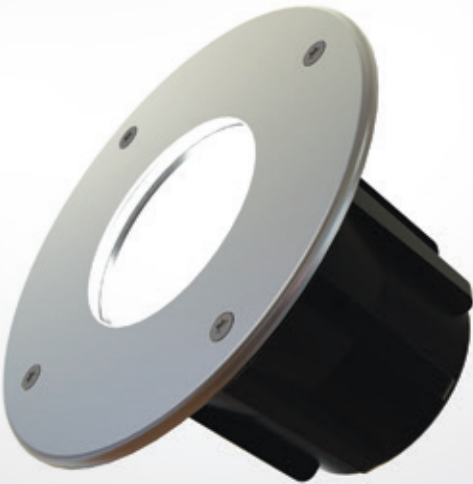
n G R O U N D S T A N D A R D - 5 - V W - 2 5 - R D - S A - H V		25 - 25 degrees	
		45 - 45 degrees	SA - Steel front and aluminium body
	POWER	FWHM ANGLE	MATERIAL OF THE FRONT / BODY
FAMILY	CCT	FRONT PLATE	SUPPLY VOLTAGE
	VW - 2700K	RD - Round	HV - 230V AC, 50Hz
	WW - 3000K		
	NW - 4000K		
	CW - 5000K		

Niviss nGround Medium LED

02. nGround Series



- Based on CREE® LEDs
- 230V AC
- Made of aluminium, front of 316L steel
- Power: 17W
- IP67
- 5-year warranty

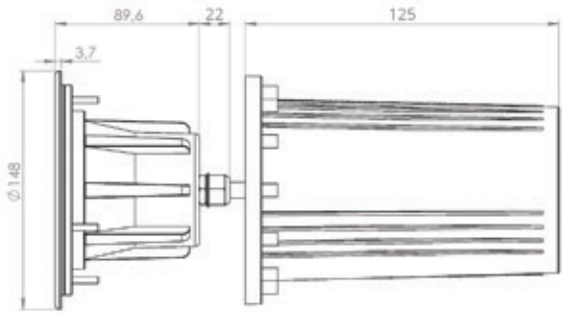


The Niviss nGround Medium fixture can be used for lighting many places and objects such as:

- parks
- gardens
- squares
- premises
- plants
- exterior walls

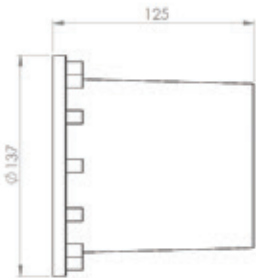
LIGHT COLOUR	COMFORT WHITE	WARM WHITE	NEUTRAL WHITE	COOL WHITE
Colour Temperature*	2700 ± 150 K	3000 ± 150 K	4000 ± 250 K	5000 ± 250 K
Effective Lumen Output**	1340 lm	1340 lm	1450 lm	1550 lm
Effective Lumen Output COB Version**	890 lm	1000 lm	1090 lm	1090 lm
CRI	≥ 80			
Viewing Angle [FWHM]	25°, 50° / 10°, 20°			
Input Voltage	230V AC 50Hz			
Power Consumption	17 W			
Operating Temperature	-20°C + +55°C			
Dimensions	Ø148mm			
IP Rating	IP67			
Lifetime***	≥ 60 000 h			

* Other CRI, CCTs and colours available on request.
** Source performance in real-life conditions at Ta=25°C; includes optical losses; the tolerance of source lumen output is 10%.
*** Approximate lifetime of LEDs declared by Cree® at Ta=25°C (for 80% of initial light output) and other electronic components.



Accessories

GROUND-MEDIUM-ABS-1
ABS Mounting pot



Order code format

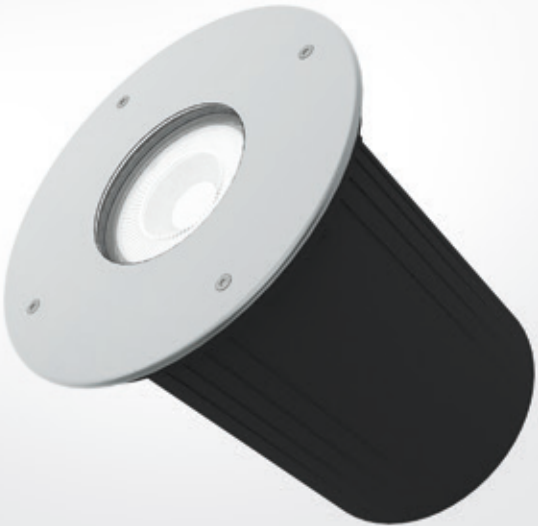
Order code format		10 - 10 degrees		SA - Steel front and aluminium body
		20 - 20 degrees		
		25 - 25 degrees		
		50 - 50 degrees		
		FWHM ANGLE		MATERIAL OF THE FRONT / BODY
n G R O U N D M E D I U M - 1 7 - V W - 2 5 - R D - S A - H V				
FAMILY		CCT	FRONT PLATE	SUPPLY VOLTAGE
		VW - 2700K	RD - Round	HV - 230V AC, 50Hz
		WW - 3000K		
		NW - 4000K		
		CW - 5000K		

Niviss nGround Big LED

02. nGround Series

- Based on CREE® LEDs
- 230V AC
- Made of aluminium, front of 316L steel
- Power: 30W
- IP 67
- 5-year warranty

CREE
LED Solution Provider

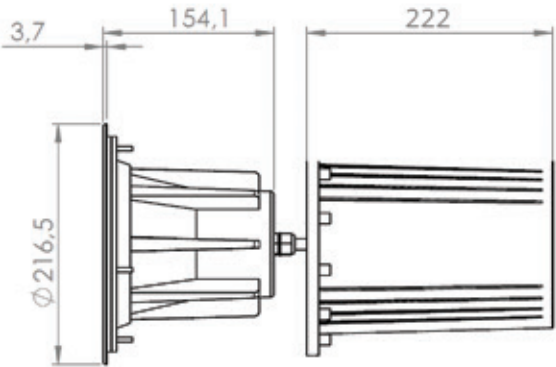


The Niviss nGround Big fixture can be used for lighting many places and objects such as:

- gardens
- squares
- parks
- plants
- exterior walls
- gardens

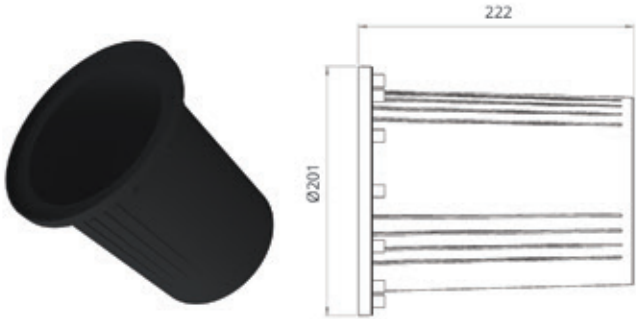
LIGHT COLOUR	CONFORT WHITE	WARM WHITE	NEUTRAL WHITE	COOL WHITE
Colour Temperature	2700 ± 150 K	3000 ± 150 K	4000 ± 250 K	5000 ± 250 K
Effective Lumen Output*	3100 lm	3530 lm	3990 lm	3990 lm
CRI	≥ 80			
Viewing Angle [FWHM]	25°, 38°			
Input Voltage	230V AC 50Hz			
Power Consumption	30 W			
Operating Temperature	-20°C ÷ +55°C			
Dimensions	Ø216,5 mm			
IP Rating	IP67			
Lifetime**	≥ 55 000 h			

* Other CRI, CCTs and colours available on request.
** Source performance in real-life conditions at Ta=25°C; includes optical losses; the tolerance of source lumen output is 10%.
*** Approximate lifetime of LEDs declared by Cree® at Ta=25°C (for 90% of initial light output) and other electronic components



/ Accessories

■ **GROUND-BIG-ABS-1**
ABS Mounting pot



/ Order code format

POWER		25 - 25 degrees 38 - 38 degrees FWHM ANGLE	SA - Steel front and aluminium body MATERIAL OF THE FRONT / BODY
n G R O U N D B I G - 3 0 - V W - 2 5 - R D - S A - H V			
FAMILY	CCT VW - 2700K WW - 3000K NW - 4000K CW - 5000K	FRONT PLATE RD - Round	SUPPLY VOLTAGE HV - 230V AC, 50Hz

Niviss nDisc light fixtures

The drive-over Niviss nDisc fixtures are perfect for lighting car parks and driveways. Due to the high resistance rating, they can easily carry loads imposed by vehicles weighing up to 3.5 tons.

They are made of one of the top-quality steels available on the market - the 316L steel. This steel grade offers the best resistance to unfavourable weather conditions.

When planning an investment, it is a good idea to choose reliable fixtures having a long lifetime regardless of the weather conditions. This can be achieved with Niviss fixtures.

Niviss nDisc
light fixtures >

Niviss nDisc Micro LED

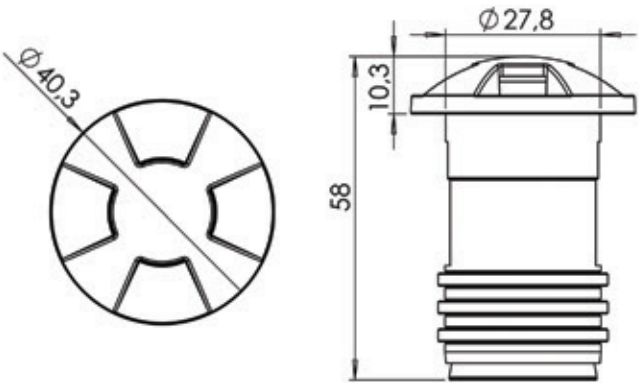
03. nDisc

- Based on CREE® LEDs
- 12/24V DC
- Made of 316L steel
- 5-year warranty
- IP68
- Power: 2.5W (on request: 3.5W)



The Niviss nDisc Micro fixture can be used for lighting many places and objects such as:

- recreation areas
- saunas
- gardens
- terraces



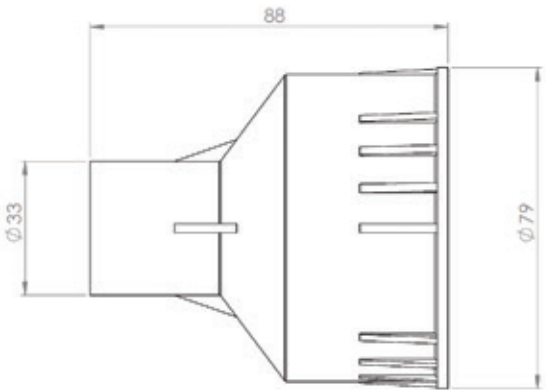
CREE
LED Solution Provider

LIGHT COLOUR	COMFORT WHITE	WARM WHITE	NEUTRAL WHITE	COOL WHITE
Colour Temperature*	2700 ± 150 K	3000 ± 150 K	4000 ± 250 K	5000 ± 250 K
Effective Lumen Output**	< 60 lm	< 60 lm	< 60 lm	< 60 lm
CRI	≥ 80	≥ 80	≥ 80	≥ 70
Input Voltage	12V/24V DC			
Power Consumption	2.5W			
Operating Temperature.	-20°C ÷ +55°C			
Dimensions	Ø40,3mm			
IP Rating	IP68			
Lifetime***	≥ 35 000 h			

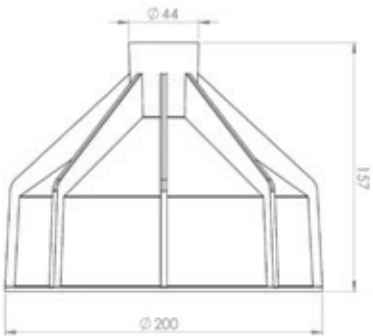
* Other CRI, CCTs and colours available on request.
** Source performance in real-life conditions at Ta=25°C; includes optical losses; the tolerance of source lumen output is 10%.
*** Approximate lifetime of LEDs declared by Cree® at Ta=25°C (for 90% of initial light output) and other electronic components

Accessories

GROUND-MINI-ABS-1



GROUND-MINI-ABS-2



Order code format

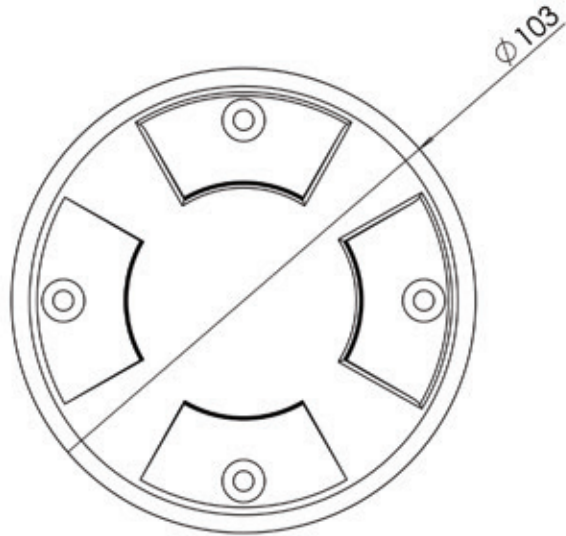
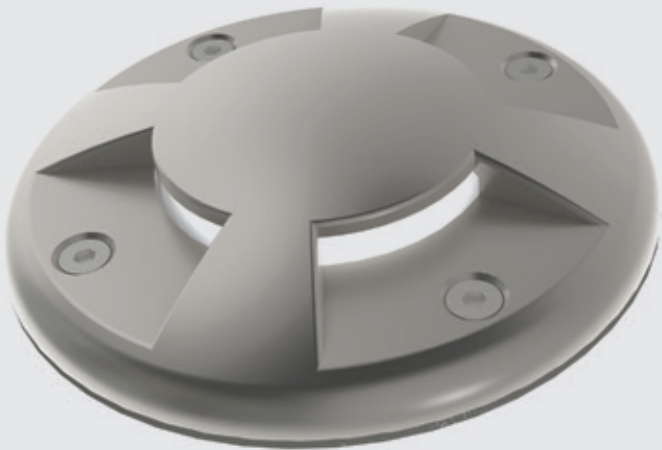
POWER		SS - Steel front and body MATERIAL OF THE FRONT/BODY	
n D I S C M I C R O - 2 - V W - R D - S S - L V			
FAMILY	CCT VW - 2700K WW - 3000K NW - 4000K CW - 5000K	FRONT PLATE RD - Round	SUPPLY VOLTAGE LV - 12V/24VDC

Niviss nDisc Standard LED

03. nDisc

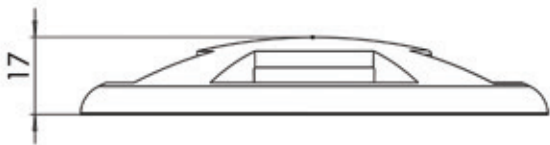


- Based on CREE® LEDs
- 230V AC / IP65
- Made of 316L or aluminium
- Power: 4.6 W
- 5-year warranty
- CRI ≥ 80,
- Working load up to 150 kg



The Niviss nDisc Standard fixture can be used for lighting many places and objects such as:

- car parks
- parks
- terraces
- airports
- premises
- gardens



LIGHT COLOUR	
Colour Temperature*	WARM WHITE
Source Lumen Output**	3000 ± 150 K
CRI	500 lm
Input Voltage	≥ 80
Power Consumption	230V AC 50Hz
Operating Temperature	4.6 W
Dimensions	-20°C ÷ +55°C
IP Rating	Ø103 mm
Load	IP67
Lifetime***	100 kg (steel version)
	≥ 60 000 h

* Source performance in real-life conditions at Ta=25°C; includes optical losses; the tolerance of source lumen output is 5%.
** Approximate lifetime of LEDs declared by Cree® at Ta=25°C (for 90% of initial light output) and other electronic components
*** According to EN 62471:2008

/ Accessories

- nDISC STANDARD- MASK



/ Order code format

		POWER	4 - 4 sides open	SS - Steel
			NUMBER OF SIDES OPEN	AA - Aluminium
				MATERIAL OF THE FRONT/BODY
n D I S C S T A N D A R D - 5 - W W - 4 - R D - S S - H V				
FAMILY		CCT	FRONT PLATE	SUPPLY VOLTAGE
		WW - 3000K	RD - Round	HV - 230V AC, 50Hz

n D I S C S T A N D A R D - 5 - W W - 4 - R D - S S - H V

FAMILY

CCT
WW - 3000K

FRONT PLATE
RD - Round

SUPPLY VOLTAGE
HV - 230V AC, 50Hz

Niviss nDisc Medium LED

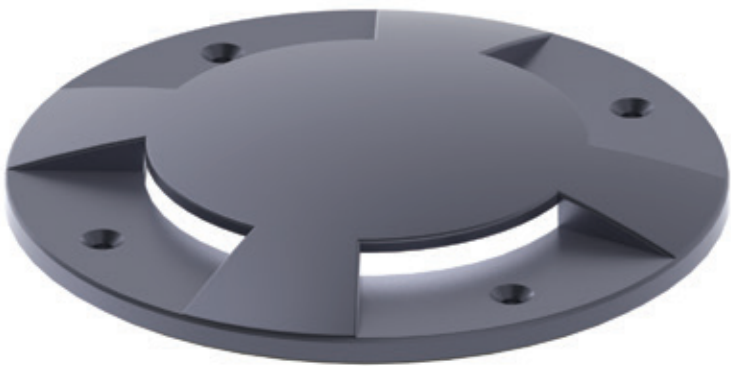
03. nDisc



- 230V AC
- Made of Aluminium, 316L on request
- Power: 6W
- IP67
- 5-year warranty
- Working load: 500 kg for the ALU version and 800 kg for the steel version
- 3 step dimming

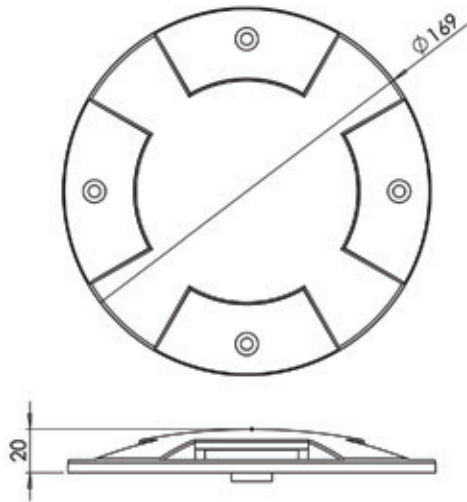
The Niviss nDisc Medium fixture can be used for lighting many places and objects such as:

- premises
- gardens
- parks
- terraces
- car parks
- squares



LIGHT COLOUR	WARM WHITE
Colour Temperature	3000 ± 150 K
Effective Lumen Output*	460 lm
CRI	≥ 80
Input Voltage	230V AC 50Hz
Power Consumption	6 W
Operating Temperature	-20°C + +55°C
Dimensions	Ø169 mm
IP Rating	IP67
Lifetime**	≥ 35 000 h

* Source performance in real-life conditions at Ta=25°C; includes optical losses; the tolerance of source lumen output is 5%.
** Approximate lifetime of LEDs declared by Cree* at Ta=25°C (for 80% of initial light output) and other electronic components.



/ Accessories

- NDISC-MEDIUM-MASK



/ Order code format

POWER		Number OF SIDES OPEN		MATERIAL		SUPPLY VOLTAGE	
2 - 2 sides open		4 - 4 sides open		SS - Steel			
				AA - Aluminium			
n D I S C M E D I U M - 6 - W W - 4 - R D - A A - H V							
FAMILY		CCT		FRONT PLATE			
		WW - 3000K		RD - Round		HV - 230V AC, 50Hz	

Niviss Projector light fixtures

The Projector series was created for customers looking for flexible lighting solutions for garden and park spaces. Thanks to the moveable fixture, the light beam can be pointed in any direction. The lights are perfect for illuminating exterior walls.

The RGB and DW versions enable you to create stunning effects. Additionally, the smart control makes Niviss Projektor fixtures one of the most innovative solutions available on the market.

When planning an investment, it is a good idea to choose reliable fixtures having a long lifetime regardless of the weather conditions. This can be achieved with Niviss fixtures.

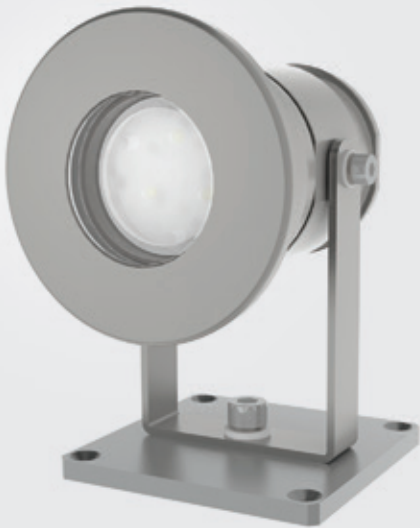


Niviss Projector
light fixtures >

Niviss Ground Standard Projector LED

04. Ground Projectors

- Based on CREE® LEDs
- 230V AC / 12-24V on request
- Made of 316L steel
- Power: 7W / 6W
- IP67 / IP68
- 5-year warranty
- Also available with an aluminium version



The Niviss Ground Standard Projector fixture can be used for lighting many places and objects such as:

- parks
- gardens
- exterior walls
- monuments
- premises
- plants

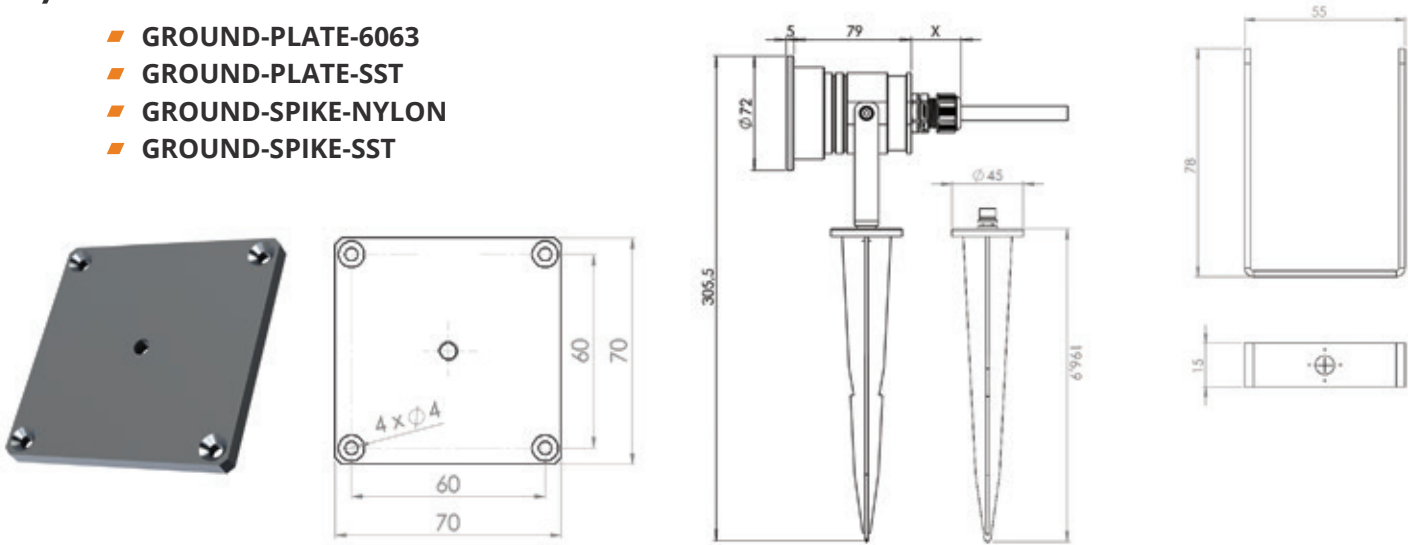


LIGHT COLOUR	AMBER WHITE	COMFORT WHITE	WARM WHITE	NEUTRAL WHITE	COOL WHITE
Colour Temperature*	2200 ± 150 K	2700 ± 150 K	3000 ± 150 K	4000 ± 250 K	5000 ± 250 K
Effective Lumen Output**	400 lm	535 lm	535 lm	570 lm	610 lm
CRI	≥ 80				
Viewing Angle [FWHM]	10°, 30°, 50°				
Input Voltage	230V AC 50Hz / 12V/24V DC				
Power Consumption	7 W / 6W				
Operating Temperature	-20°C ÷ +55°C				
Dimensions	Ø72mm				
IP Rating	IP67 / IP68				
Lifetime***	≥ 60 000 h				

* Other CRI, CCTs and colours available on request.
** Source performance in real-life conditions at Ta=25°C; includes optical losses; the tolerance of source lumen output is 10%.
*** Approximate lifetime of LEDs declared by Cree® at Ta=25°C (for 80% of initial light output) and other electronic components.

Accessories

- GROUND-PLATE-6063
- GROUND-PLATE-SS
- GROUND-SPIKE-NYLON
- GROUND-SPIKE-SS



Order code format

FAMILY	POWER	FWHM ANGLE	FRONT PLATE	MATERIAL OF THE FRONT / BODY	SUPPLY VOLTAGE
GROUND STANDARD PR - 7 - VW - 30 - RD - SS - HV	CCT	10 - 10 degrees	RD - Round	AA - Aluminium front and body SS - Steel front and body	LV - 12V/24V DC HV - 230V AC, 50Hz
	AW - 2200K	30 - 30 degrees			
	VW - 2700K	50 - 50 degrees			
	WW - 3000K				
	NW - 4000K				
	CW - 5000K				

Niviss nGround Standard Projector LED

04. Ground Projectors

- Based on CREE® LEDs
- 230V AC
- Made of aluminium
- Power: 5W
- IP67
- 5-year warranty



The Niviss nGround Standard Projector fixture can be used for lighting many places and objects such as:

- parks
- gardens
- exterior walls
- monuments
- premises
- plants



Light Colour	Comfort White	Warm White	Neutral White	Cool White
Colour Temperature*	2700 ± 150 K	3000 ± 150 K	4000 ± 250 K	5000 ± 250 K
Effective Lumen Output**	395 lm	395 lm	420 lm	450 lm
CRI	≥ 80			
Viewing Angle [FWHM]	25°, 45°			
Input Voltage	230V AC 50Hz			
Power Consumption	5 W			
Operating Temperature	-20°C ÷ +55°C			
Dimensions	Ø76,5mm			
IP Rating	IP67			
Lifetime***	≥ 60 000 h			

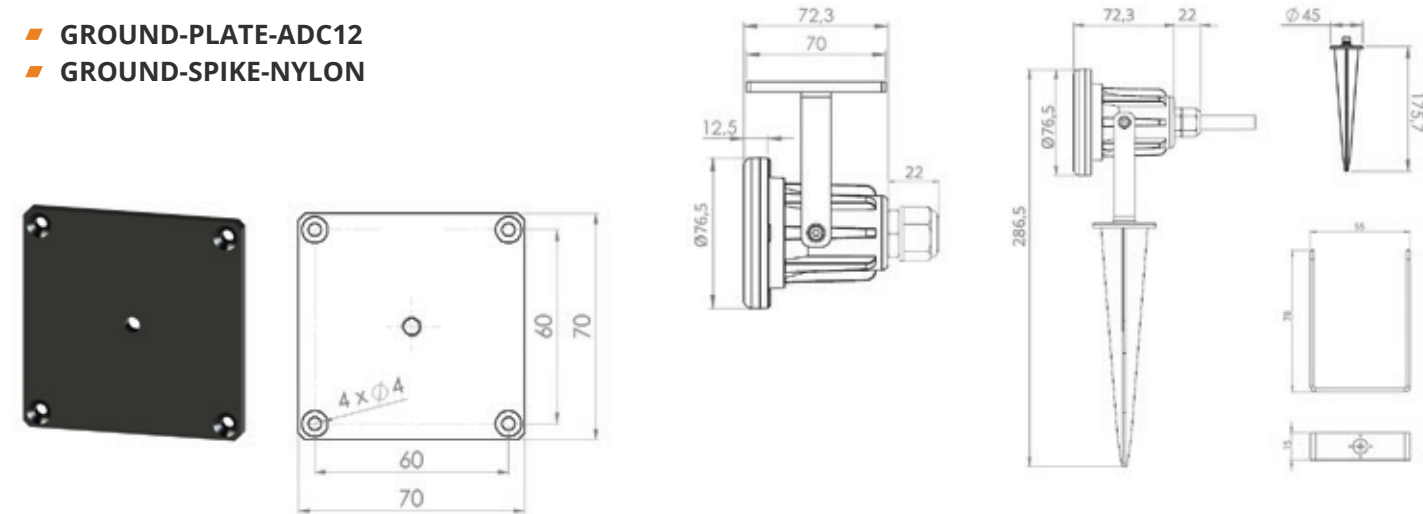
* Other CCTs and colours available on request

** Source performance in real-life conditions at Ta=25°C; includes optical losses; the tolerance of source lumen output is 10%.

*** Approximate lifetime of LEDs declared by Cree® at Ta=25°C (for 80% of initial light output) and other electronic components.

/ Accessories

- GROUND-PLATE-ADC12
- GROUND-SPIKE-NYLON



Order code format

		25 - 25 degrees	
		45 - 45 degrees	AA - Aluminium front and body
		FWHM ANGLE	MATERIAL OF THE FRONT / BODY
n G R O U N D S T A N D A R D P R - 5 - V W - 2 5 - R D - A A - H V			
FAMILY		CCT	FRONT PLATE
		VW - 2700K	RD - Round
		VW - 3000K	
		NW - 4000K	
		CW - 5000K	SUPPLY VOLTAGE
			HV - 230V AC, 50Hz

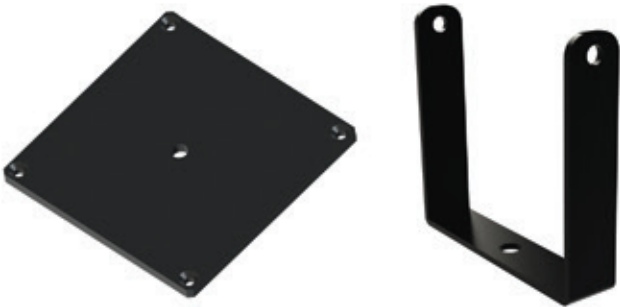
Niviss nGround Medium Projector LED

04. Ground Projectors

- Based on CREE® LEDs
- 230V AC
- Made of aluminium
- Power: 17W
- IP67
- 5-year warranty

The Niviss nGround Medium Projector fixture can be used for lighting many places and objects such as:

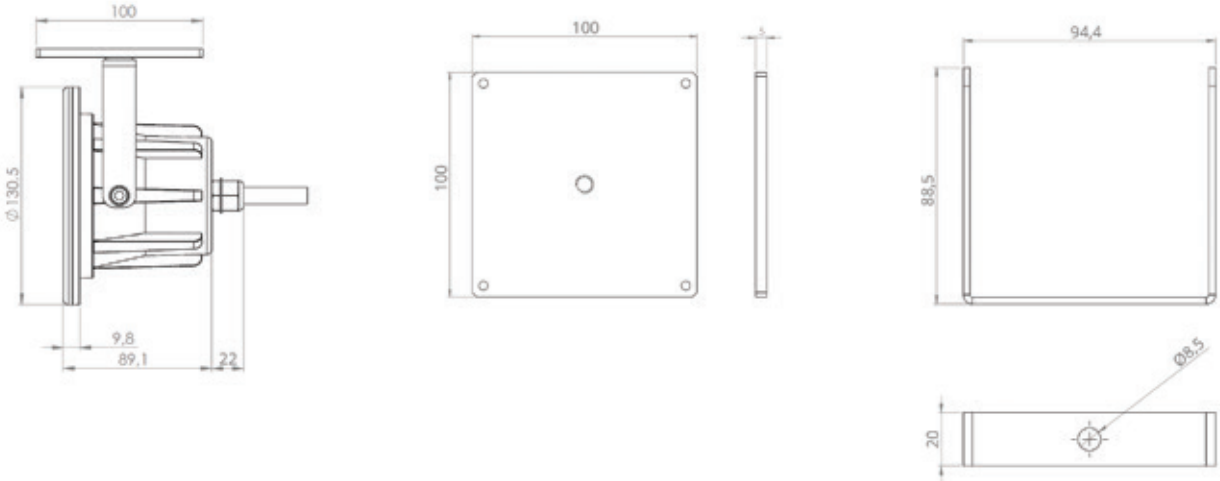
- parks
- gardens
- exterior walls
- monuments
- premises
- plants



CREE
LED Solution Provider

LIGHT COLOUR	COMFORT WHITE	WARM WHITE	NEUTRAL WHITE	COOL WHITE
Colour Temperature*	2700 ± 150 K	3000 ± 150 K	4000 ± 250 K	5000 ± 250 K
Effective Lumen Output**	1340 lm	1340 lm	1450 lm	1550 lm
Effective Lumen Output COB Version**	890 lm	1000 lm	1090 lm	1090 lm
CRI	≥ 80			
Viewing Angle [FWHM]	25°, 50° / 10°, 20° COB Version			
Input Voltage	230V AC 50Hz			
Power Consumption	17 W			
Operating Temperature	-20°C ÷ +55°C			
Dimensions	Ø130,5mm			
IP Rating	IP67			
Lifetime***	≥ 60 000 h			

* Other CRI, CCTs and colours available on request.
** Source performance in real-life conditions at Ta=25°C; includes optical losses; the tolerance of source lumen output is 10%.
*** Approximate lifetime of LEDs declared by Cree® at Ta=25°C (for 80% of initial light output) and other electronic components.



/ Order code format

FAMILY	POWER	FRONT PLATE	SUPPLY VOLTAGE
n G R O U N D M E D I U M P R -	CCT	FRONT PLATE	SUPPLY VOLTAGE
	VW - 2700K	RD - Round	HV - 230V AC, 50Hz
	WW - 3000K		
	NW - 4000K		
	CW - 5000K		
1 7 - V W - 2 5 - R D - A A - H V			
10 - 10 degrees 20 - 20 degrees 25 - 25 degrees 50 - 50 degrees FWHM ANGLE			
AA - Aluminium front and body MATERIAL OF THE FRONT / BODY			

04. Ground Projectors



Niviss nStep light fixtures

The Niviss nstep fixtures family was designed for installation a dedicated junction box. The IP67 protection rating makes it perfect for all indoor as well as outdoor applications.

Different finish options of the front and a large variety of available CCTs make nStep fixtures extremely versatile. The perfect environment for them are walls at stairs, hallways and facades of buildings.



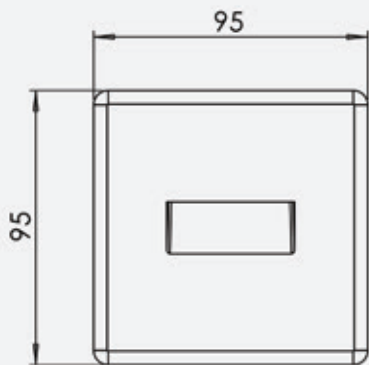
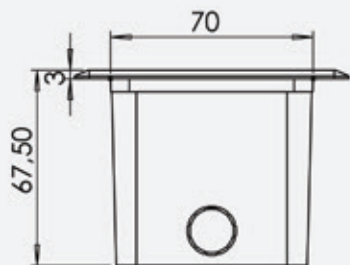
Niviss nStep
light fixtures >

Niviss nStep Mini

05. nStep Series



- Based on CREE® LEDs
- 230V AC
- IP65
- Made of aluminium protected by painting
- Power: 4.6W
- 5-year warranty
- CRI ≥ 80, ≥ 90 on request
- Another color on request



The Niviss nStep mini fixture can be used for lighting many places and objects such as:

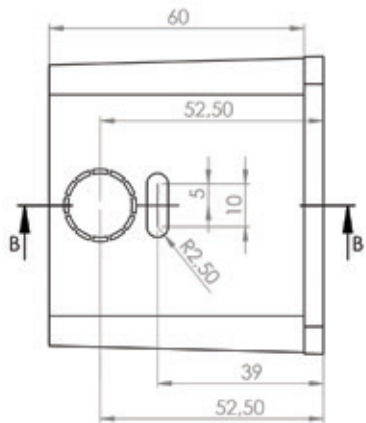
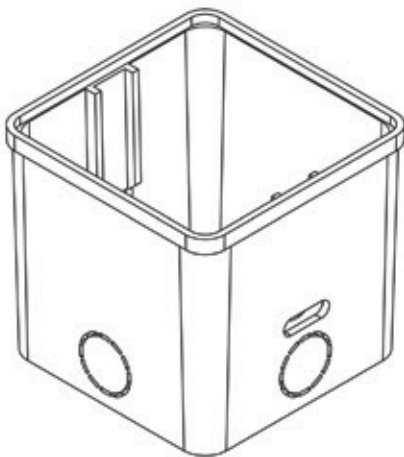
- stairs
- corridors
- terraces
- shopping center
- premises
- gardens

LIGHT COLOUR	WARM WHITE
Colour Temperature*	3000 ± 150 K
Source Lumen Output**	500 lm
CRI	≥ 80
Input Voltage	230V AC 50Hz
Power Consumption	4.6 W
Operating Temperature	-20°C ÷ +55°C
Dimensions	75x75mm
IP Rating	IP65
Lifetime***	≥ 60 000 h

* Source performance in real-life conditions at Ta=25°C; includes optical losses; the tolerance of source lumen output is 5%.
** Approximate lifetime of LEDs declared by Cree® at Ta=25°C (for 90% of initial light output) and other electronic components
*** According to EN 62471:2008

/ Accessories

■ nSTEP-BASKET



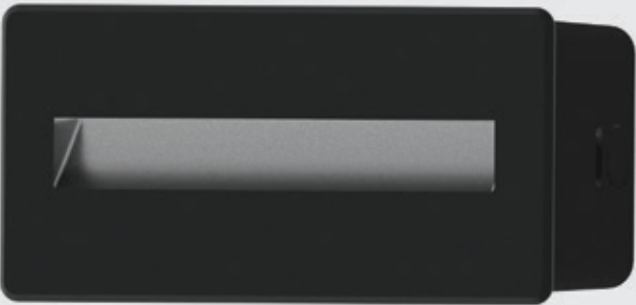
/ Order code format

		POWER	FRONT COLOR	MATERIAL OF THE FRONT / BODY
n S T E P - M I N I - 5 - W W - B M - S Q - A P - H V				
FAMILY	TYPE	CCT WW - 3000K	FRONT PLATE SQ - Square	SUPPLY VOLTAGE HV - 230V AC, 50Hz

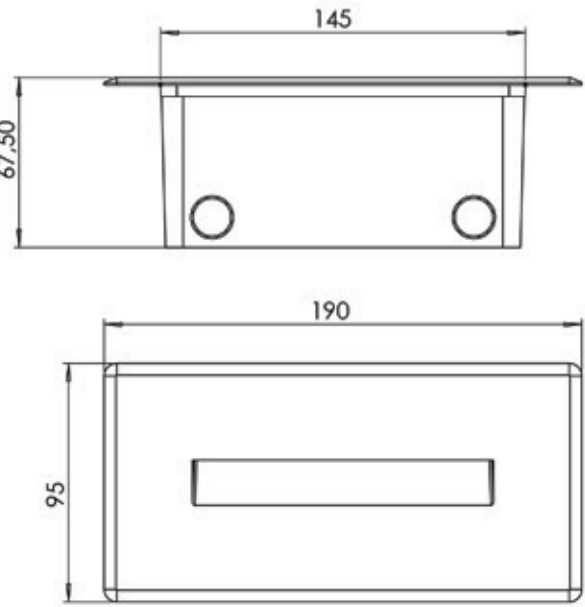
BM – Black Mat
BG – Black Gloss
A – Aluminum ADC12
P – PC - Polycarbonate

Niviss nStep Standard

05. nStep Series



- Based on CREE® LEDs
- 230V AC / IP65
- Made of steel protected by painting
- Power: 9.8W
- 5-year warranty
- CRI ≥ 80, ≥ 90 on request
- Another color on request



The Niviss nStep mini fixture can be used for lighting many places and objects such as:

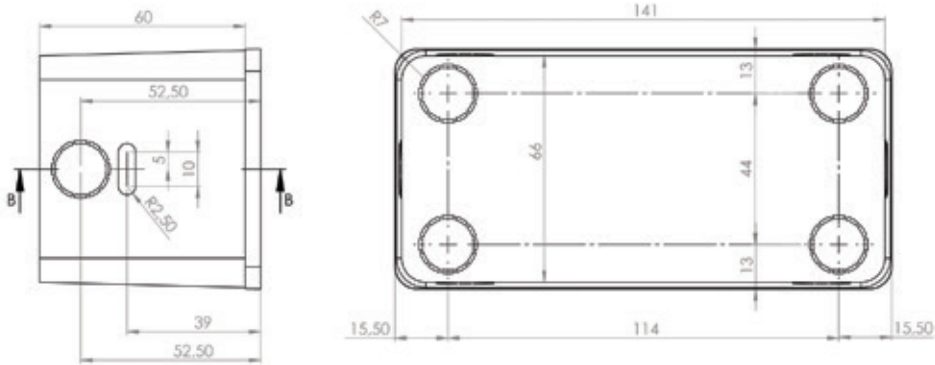
- stairs
- corridors
- terraces
- shopping center
- premises
- gardens

LIGHT COLOUR	WARM WHITE
Colour Temperature*	3000 ± 150 K
Source Lumen Output**	1000 lm
Risk group*	RG1
CRI	≥ 80
Viewing Angle	Ambient light
Input Voltage	230V AC 50Hz
Power Consumption	9.8 W
Operating Temperature	-20°C ÷ +55°C
Dimensions	150x75mm
Proposed Cable Type	H07RN-F 3G1
Cable Length	0,5m
IP Rating	IP65
Lifetime***	Class I
Appliance Class	≥ 60 000 h

* Source performance in real-life conditions at Ta=25°C; includes optical losses; the tolerance of source lumen output is 5%.
** Approximate lifetime of LEDs declared by Cree® at Ta=25°C (for 90% of initial light output) and other electronic components
*** According to EN 62471:2008

Accessories

nSTEP-BASKET



Order code format

FAMILY		TYPE		POWER	FRONT COLOR	MATERIAL OF THE FRONT / BODY	SUPPLY VOLTAGE
nSTEP - STANDARD - 10 -		WW -		BM -	SQ -	AP -	HV
				CCT	FRONT PLATE		
				WW - 3000K	SQ - Square		HV - 230V AC, 50Hz

Niviss Ground RGB & RGBW

The Ground series was designed using modern simulation methods in order to obtain the highest product quality.

Ground series fixtures are made of top-quality materials such as surgical steel, high-purity glass for optical applications, and modern CREE® LEDs.

When planning an investment, it is a good idea to choose reliable fixtures having a long lifetime regardless of the weather conditions. This can be achieved with Niviss fixtures.



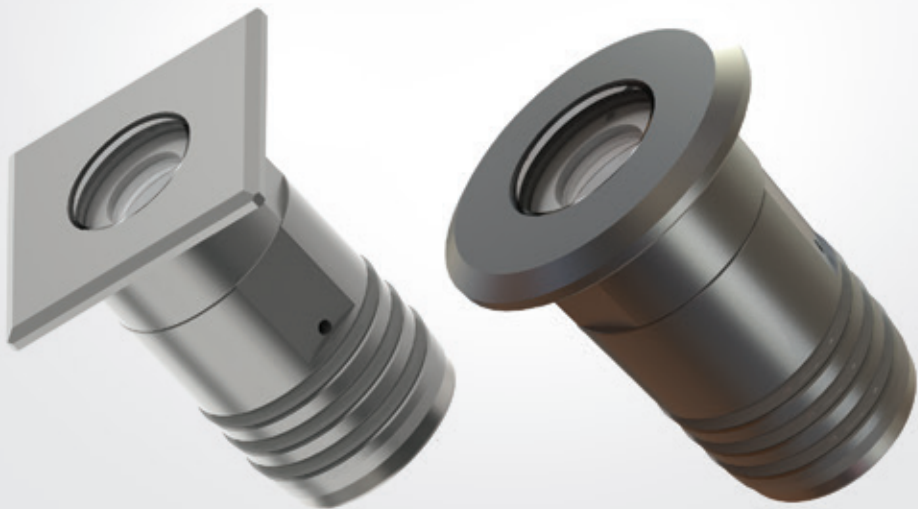
Niviss Ground
light fixtures >

Niviss Ground Micro RGBW

06. RGB-W Solutions

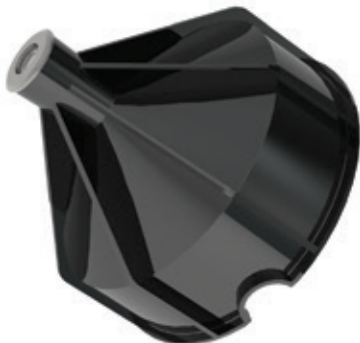


- Based on CREE® LEDs
- up to 150 mA per channel
- Made of 316L steel
- Power: 0.5 W per channel
- IP68
- 5-year warranty
- Round or square front
- RGBW



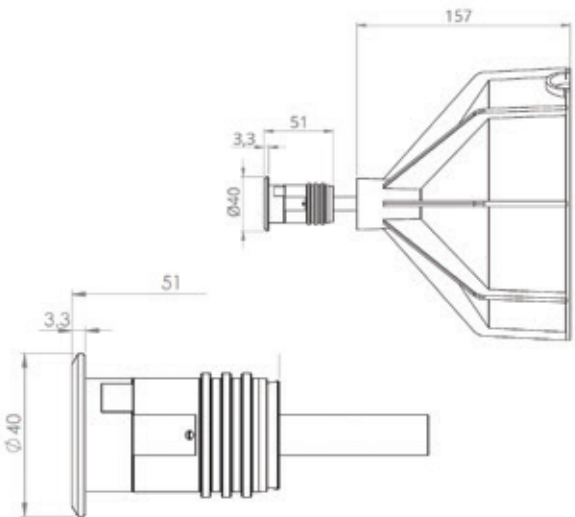
The Niviss Ground Micro RGBW fixture can be used for lighting many places and objects such as:

- parks
- gardens
- squares
- premises
- plants
- exterior walls



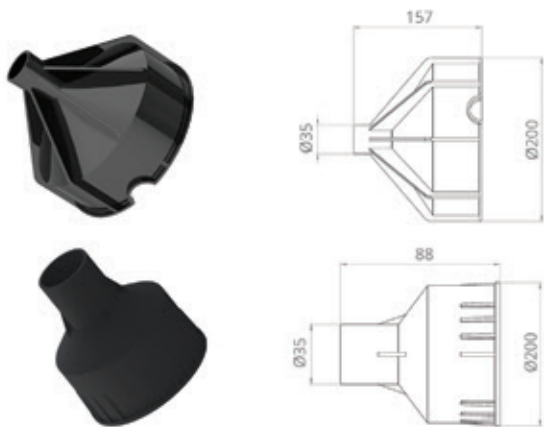
LIGHT COLOUR	RED	GREEN	BLUE	COOL WHITE	NEUTRAL WHITE	WARM WHITE
Colour Temperature / Dominant Wavelength Range	619-624 nm	520-535 nm	460-475 nm	5500-6500K	3700-4500K	3000-3700K
Effective Lumen Output*	14 lm	30 lm	8 lm	30 lm	30 lm	30 lm
Viewing Angle [FWHM]	38°, 56°					
Constant Current	max 150 mA					
Power Consumption	max 0,5 W per channel					
Operating Temperature	-20°C ÷ +55°C					
Dimensions	Ø40mm					
IP Rating	IP68					
Lifetime**	≥ 60 000 h					

* Source performance in real-life conditions at Ta=25°C; includes optical losses; the tolerance of source lumen output is 10%.
** Approximate lifetime of LEDs declared by Cree® at Ta=25°C (for 80% of initial light output) and other electronic components.



Accessories

- GROUND-MICRO-ABS-1
- GROUND-MICRO-ABS-2



Order code format

FAMILY	COLOUR VERSION	FRONT PLATE	TYPE OF POWER SUPPLY
GROUND MICRO - 2 - RGBW - 38 - SQ - SS - CC	RGBW - RGB + warm white RGBN - RGB + neutral white RGBC - RGB + cool white	SQ - Square RD - Round	CC - Constant Current (max 150 mA per channel)

Niviss Ground Standard RGB

CREE
LED Solution Provider

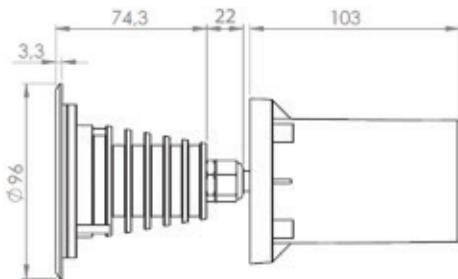
06. RGB-W Solutions

- Based on CREE® LEDs
- 12/24V DC
- Made of 316L steel
- Power: 2 W per channel
- IP68
- 5-year warranty
- Round or square front
- Also available with an aluminium body
- RGB



The Niviss Ground Standard LED fixture can be used for lighting many places and objects such as:

- parks
- gardens
- squares
- premises
- plants
- exterior walls



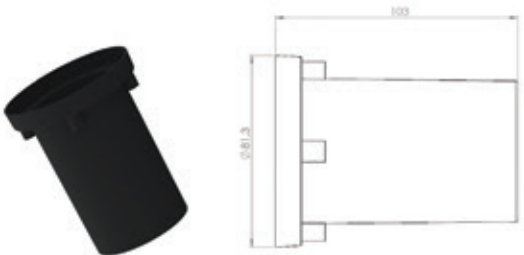
LIGHT COLOUR	RED	GREEN	BLUE
Effective Lumen*	57 lm	102 lm	62 lm
Viewing Angle [FWHM]	30°, 50°		
Input Voltage	12V/24V DC		
Power Consumption	2 W per channel		
Operating Temperature.	-20°C ÷ +55°C		
Dimensions	Ø96mm		
IP Rating	IP68		
Lifetime**	≥ 65 000 h		

* Source performance in real-life conditions at Ta=25°C; includes optical losses; the tolerance of source lumen output is 10%.
** Approximate lifetime of LEDs declared by Cree® at Ta=25°C (for 80% of initial light output) and other electronic components.

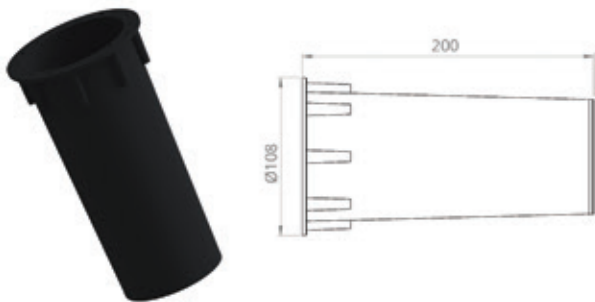
/ Accessories

GROUND-STANDARD-ABS-1

ABS Mounting pot 103 mm



GROUND-STANDARD-ABS-2



/ Order code format

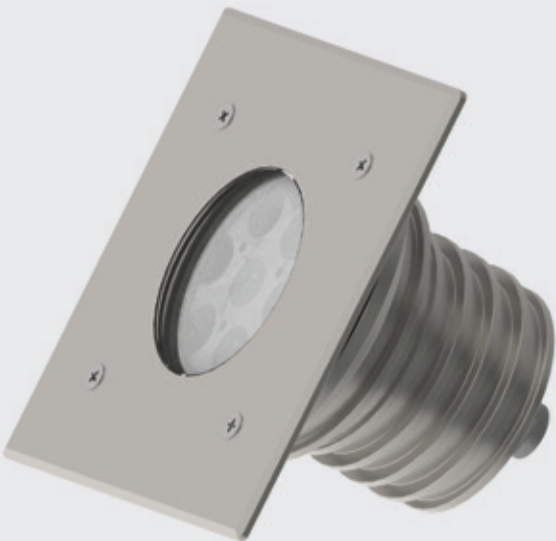
FAMILY	POWER	30 - 30 degrees	SA - Steel front and aluminium body
		50 - 50 degrees	SS - Steel front and body
		FWHM ANGLE	MATERIAL OF THE FRONT / BODY
GROUND STANDARD - 6 - RGB - 30 - SQ - SS - LV			
COLOUR VERSION	FRONT PLATE	TYPE OF POWER SUPPLY	

Niviss Ground Medium RGBW

CREE
LED Solution Provider

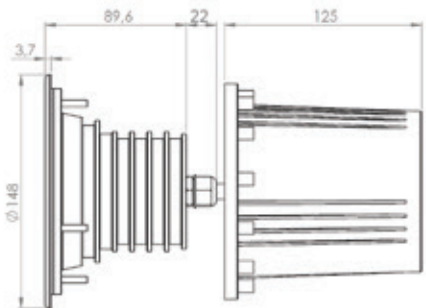
06. RGB-W Solutions

- Based on CREE® LEDs
- 12/24V DC
- Made of 316L steel
- Power: 6 W per chanel
- IP68
- 5-year warranty
- Round or square front
- Also available with an aluminium body
- RGBW



The Niviss Ground Medium RGBW fixture can be used for lighting many places and objects such as:

- parks
 - gardens
 - squares
- premises
 - plants
 - exterior walls



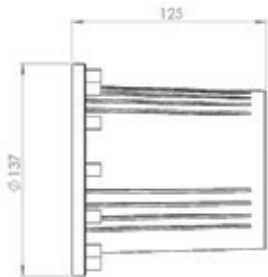
LIGHT COLOUR	RED	GREEN	BLUE	COOL WHITE	NEUTRAL WHITE	WARM WHITE
Colour Temperature / Dominant Wavelength Range	620-630 nm	520-535 nm	465-485 nm	5000K	4000K	2700K
Effective Lumen Output*	265 lm	370 lm	175 lm	680 lm	680 lm	600 lm
Viewing Angle [FWHM]	15°, 30°					
Input Voltage	12V/24V DC					
Power Consumption	max 6 W per channel					
Operating Temperature	-20°C ÷ +55°C					
Dimensions	Ø148mm					
IP Rating	IP68					
Lifetime**	≥ 65 000 h					

* Source performance in real-life conditions at Ta=25°C; includes optical losses; the tolerance of source lumen output is 10%.
** Approximate lifetime of LEDs declared by Cree® at Ta=25°C (for 80% of initial light output) and other electronic components.



Accessories

GROUND-MEDIUM-ABS-1



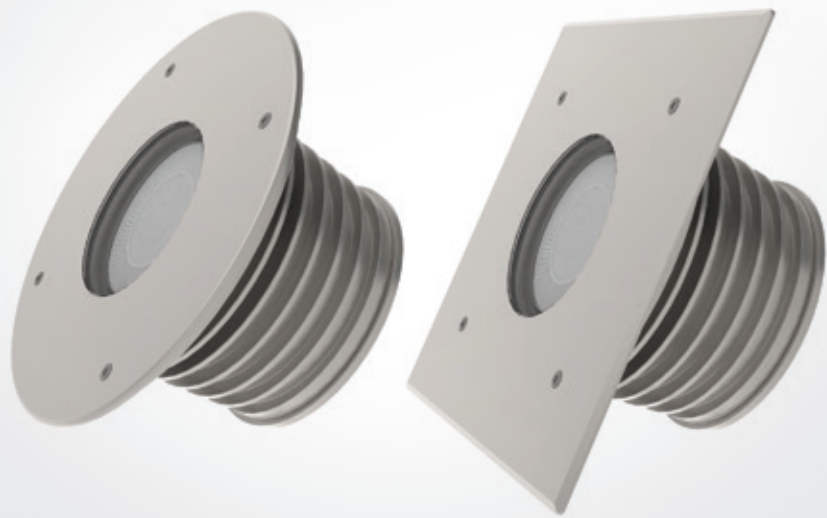
Order code format

FAMILY	COLOUR VERSION	FRONT PLATE	TYPE OF POWER SUPPLY
GROUND MEDIUM - 24 - RGBW - 15 - SQ - SA - LV	RGBW - RGB + warm white	SQ - Square	LV - 12/24V DC
	RGBN - RGB + neutral white	RD - Round	CC - Constant Current
	RGBC - RGB +cool white		(max 700mA per channel) on request

Niviss Ground Big RGBW

06. RGB-W Solutions

- Based on CREE® LEDs
- Made of 316L steel
- Power: 10 W per channel
- IP68
- 5-year warranty
- Round or square front
- Also available in an aluminium body
- RGBW



CREE
LED Solution Provider

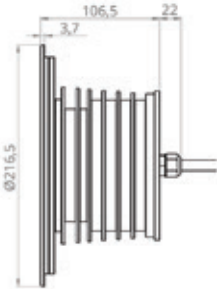
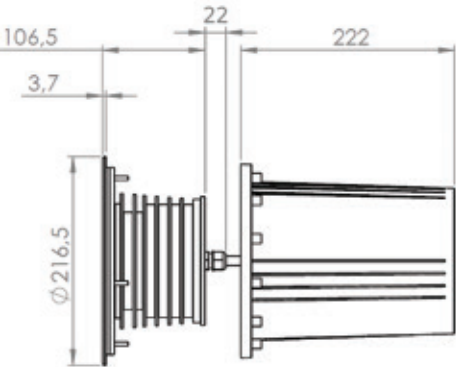
The Niviss Ground Big fixture can be used for lighting many places such as:

- gardens
- exterior walls
- parks
- squares



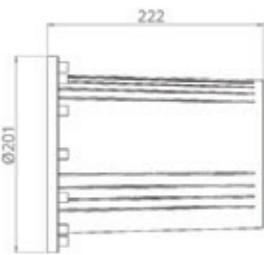
LIGHT COLOUR	RED	GREEN	BLUE	COOL WHITE	NEUTRAL WHITE	WARM WHITE
Colour Temperature / Dominant Wavelength Range	620-630 nm	520-535 nm	465-485 nm	5000-8300K	3700-5300K	2700-3500K
Effective Lumen Output*	315 lm	500 lm	245 lm	810 lm	710 lm	660 lm
Viewing Angle [FWHM]	24°, 38°					
Input Voltage	12V/24V DC					
Power Consumption	10 W per channel					
Operating Temperature	-20°C ÷ +55°C					
Dimensions	Ø216,5mm					
IP Rating	IP68					
Lifetime**	≥ 65 000h					

* Source performance in real-life conditions at Ta=25°C; includes optical losses; the tolerance of source lumen output is 10%.
** Approximate lifetime of LEDs declared by Cree® at Ta=25°C (for 80% of initial light output) and other electronic components.



Accessories

GROUND-BIG-ABS-1



Order code format

FAMILY	COLOUR VERSION	FRONT PLATE	TYPE OF POWER SUPPLY
GROUND BIG - 40 - RGBW - 24 - SQ - SA - CC	RGBW - RGB + warm white	SQ - Square	CC - Constant Current
	RGBN - RGB + neutral white	RD - Round	(max 850 mA per channel)
	RGBC - RGB + cool white		

Niviss Pool light fixtures

Owing to the IP68 rating, Niviss Pool fixtures are perfect for use in a water environment.

They are made of the top-quality 316L steel. This steel grade offers the best resistance to unfavourable weather conditions. Due to its excellent resistance, the 316L grade is used e.g. in marine applications, which proves its high quality and durability.

When planning a swimming pool investment, it is a good idea to choose reliable fixtures having a long lifetime regardless of the weather conditions.

This can be achieved with Niviss fixtures.

A photograph of a modern, two-story house at night. The house has large glass windows and doors, revealing a brightly lit interior with pink furniture. A swimming pool is in the foreground, illuminated by underwater lights, creating a vibrant blue-green glow. The pool is surrounded by a concrete deck and a grassy area. In the background, a cityscape is visible under a dark blue sky. The overall scene is a high-quality, professional photograph used for a product advertisement.

Niviss Pool
light fixtures >

Niviss Pool Micro LED

07. Pool Series

- Based on CREE® LEDs
- 12V/24V DC
- Made of 316L steel
- Power: 2W (on request: 3W)
- IP68
- 5-year warranty

The Niviss Pool Micro LED fixture can be used for lighting many places and objects such as:

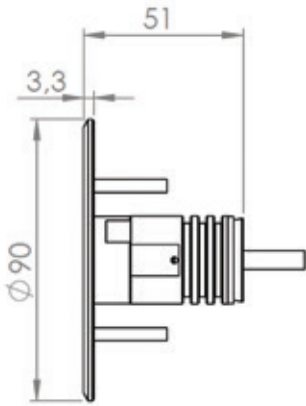
- swimming pools
- saunas
- fountains
- gardens
- plants



CREE
► LED Solution Provider

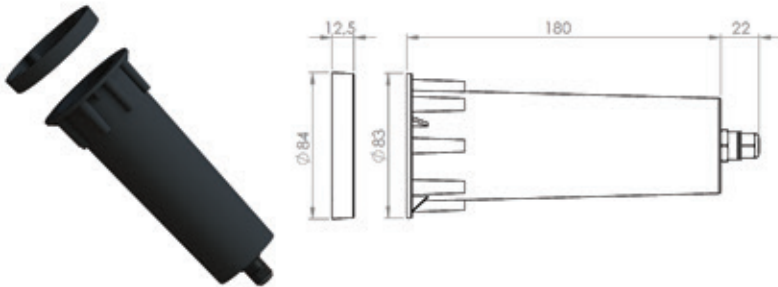
LIGHT COLOUR	AMBER WHITE	COMFORT WHITE	WARM WHITE	NEUTRAL WHITE	COOL WHITE
Colour Temperature*	2200 ± 150 K	2700 ± 150 K	3000 ± 150 K	4000 ± 250 K	5000 ± 250 K
Effective Lumen Output**	140 lm	1570 lm	180 lm	195 lm	205 lm
CRI	≥ 80				
Viewing Angle [FWHM]	17°, 31°, 39°				
Input Voltage	12V/24V DC				
Power Consumption	2 W				
Operating Temperature	-20°C ÷ +55°C				
Dimensions	Ø90mm				
IP Rating	IP68				
Lifetime***	≥ 60 000 h				

* Other CRI, CCTs and colours available on request.
** Source performance in real-life conditions at Ta=25°C; includes optical losses; the tolerance of source lumen output is 10%.
*** Approximate lifetime of LEDs declared by Cree® at Ta=25°C (for 80% of initial light output) and other electronic components.



/ Accessories

- **POOL-MICRO-ABS**
(basket with ring)



/ Order code format

FAMILY		POWER	FWHM ANGLE	MATERIAL OF THE FRONT / BODY
P O O L M I C R O - 2 - V W - 1 7 - R D - S S - L V				
		CCT	FRONT PLATE	SUPPLY VOLTAGE
		AW - 2200K	RD - Round	LV - 12V/24V DC
		VW - 2700K		
		WW - 3000K		
		NW - 4000K		
		CW - 5000K		

Niviss Pool Standard LED

07. Pool Series

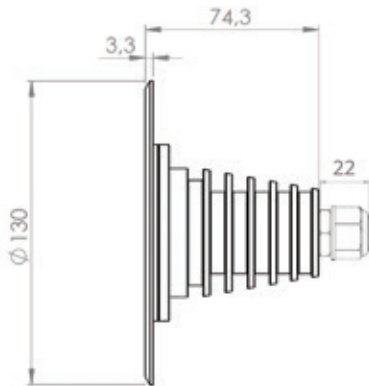
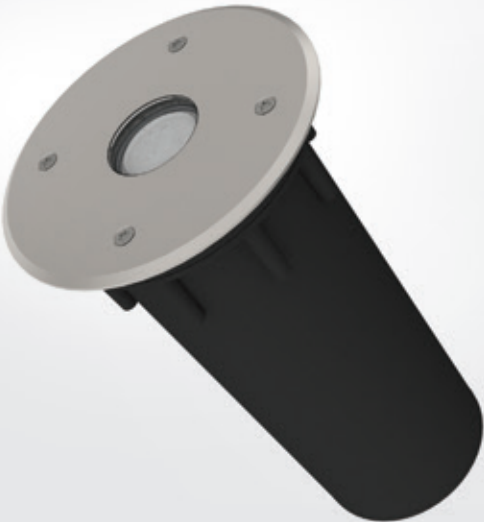
- Based on CREE® LEDs
- 12V/24V DC
- Made of 316L steel
- Power: 6W
- IP68
- 5-year warranty

CREE
LED Solution Provider



The Niviss Pool Standard LED fixture can be used for lighting many places and objects such as:

- swimming pools
- squares
- fountains
- premises
- gardens
- plants

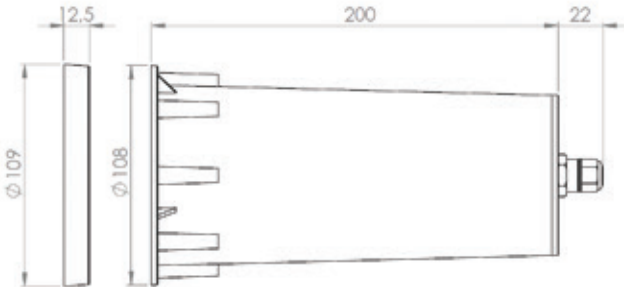


LIGHT COLOUR	AMBER WHITE	COMFORT WHITE	WARM WHITE	NEUTRAL WHITE	COOL WHITE
Colour Temperature*	2200 ± 150 K	2700 ± 150 K	3000 ± 150 K	4000 ± 250 K	5000 ± 250 K
Effective Lumen Output**	400 lm	535 lm	535 lm	570 lm	610 lm
CRI	≥ 80				
Viewing Angle [FWHM]	30°, 50°				
Input Voltage	12V/24V DC				
Power Consumption	6 W				
Operating Temperature	-20°C ÷ +55°C				
Dimensions	Ø130mm				
IP Rating	IP68				
Lifetime***	≥ 60 000 h				

* Other CRI, CCTs and colours available on request.
** Source performance in real-life conditions at Ta=25°C; includes optical losses; the tolerance of source lumen output is 10%.
*** Approximate lifetime of LEDs declared by Cree® at Ta=25°C (for 80% of initial light output) and other electronic components.

Accessories

- POOL-STANDARD-ABS
(basket with ring)



Order code format

POWER		30- 30 degrees 50 - 50 degrees FWHM ANGLE	SS - Steel front and body MATERIAL OF THE FRONT / BODY
P O O L S T A N D A R D - 6 - V W - 3 0 - R D - S S - L V			
FAMILY	CCT AW - 2200K VW - 2700K WW - 3000K NW - 4000K CW - 5000K	FRONT PLATE RD - Round	SUPPLY VOLTAGE LV -12V/24V DC

Niviss Pool Medium LED

07. Pool Series

- Based on CREE® LEDs
- 12V/24V DC
- Made of 316L steel
- Power: 18W
- IP68
- 5-year warranty

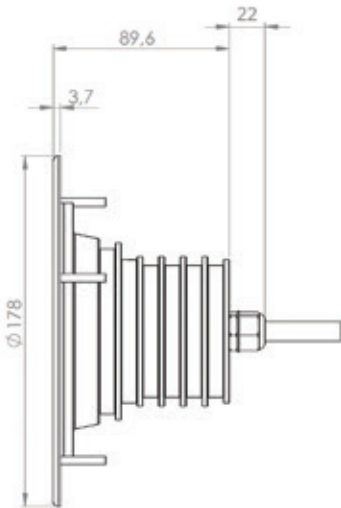


CREE 
► LED Solution Provider



The Niviss Pool Medium LED fixture can be used for lighting many places and objects such as:

- swimming pools
- fountains
- gardens
- squares

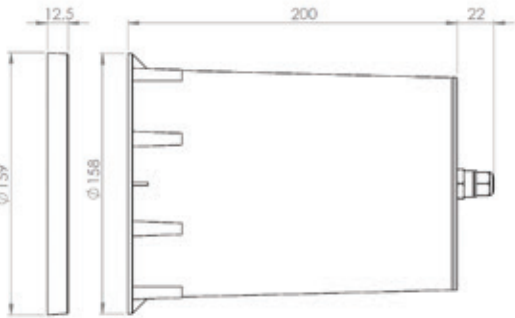


LIGHT COLOUR	COMFORT WHITE	WARM WHITE	NEUTRAL WHITE	COOL WHITE
Colour Temperature*	2700 ± 150 K	3000 ± 150 K	4000 ± 250 K	5000 ± 250 K
Effective Lumen Output**	1450 lm	1550 lm	1650 lm	1770 lm
CRI	≥ 80			
Viewing Angle [FWHM]	25°, 50°			
Input Voltage	12V/24V DC			
Power Consumption	18 W			
Operating Temperature	-20°C + +55°C			
Dimensions	Ø178mm			
IP Rating	IP68			
Lifetime***	≥ 60 000 h			

* Other CRI, CCTs and colours available on request.
** Source performance in real-life conditions at Ta=25°C; includes optical losses; the tolerance of source lumen output is 10%.
*** Approximate lifetime of LEDs declared by Cree® at Ta=25°C (for 80% of initial light output) and other electronic components.

/ Accessories

- POOL-MEDIUM-ABS**
(basket with ring)



/ Order code format

P O O L M E D I U M - 1 8 - V W - 2 5 - R D - S S - L V		25 - 25 degrees	
		50 - 50 degrees	SS - Steel front and body
	POWER	FWHM ANGLE	MATERIAL OF THE FRONT / BODY
FAMILY	CCT	FRONT PLATE	SUPPLY VOLTAGE
	VW - 2700K	RD - Round	LV - 12V/24V DC
	WW - 3000K		
	NW - 4000K		
	CW - 5000K		

Niviss **customized solutions**

YOUR IDEA
OUR WORK
YOUR PRODUCT



New upcoming products 2020

NEW PRODUCTS LAUNCHES AT 2020



PATENT PENDING

