

2023
EAE GERMANY
#futuretogether

2023

EAE GROUP **FACTS & FIGURES**



Global leader
of Busbar Power
Distribution
Systems
and
one of the
leading
companies
in the electrical
products market



founded in
1973



3
in-house
R&D
center



2,500 employees
more than **+500**
engineers and
technical experts



more than **30** patents
over **300** brands
over **100** industrial
designs

Export to more than
+100 countries



Appx. **280,000** m²
closed manufacturing area

6

factories



2023

EAE GROUP COMPANIES



EAE Elektrik (TR)

Production of Electrical
Power Distribution Systems



EAE Lighting (TR)

Production of
LED Lighting Products



EAE Elektrotechnik (TR)

Production of LV Enclosures



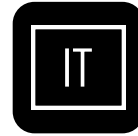
EAE Technology (TR)

Production of
Lighting and Building Automation



EAE Machinery (TR)

Production of
Steel Sheet Forming Machinery



EAE Italy

Group Products European Sales and Marketing Center



EAE Germany

Group Products Marketing and Sales Center



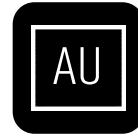
EAE France

Group Products Marketing and Sales Center



EAE USA

Group Products Marketing and Sales Center



EAE Australia

Group Products Marketing and Sales Center

2023

EAE PRODUKTION



GERMANY



Busbar

120.000m² Kocaeli - TURKEY



Building & Lighting

Automation Systems

25.000m² İstanbul – TURKEY



Cable Trays & Support Systems

45.000m² Kocaeli - TURKEY

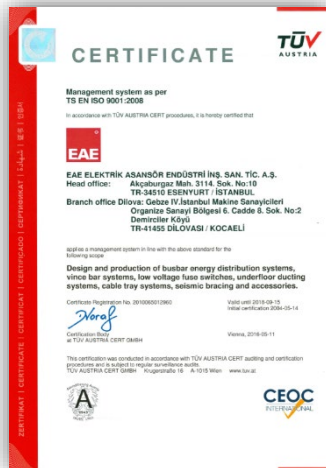


LED Lighting

65.000m² Kocaeli - TURKEY

2023

Management Systems



2023

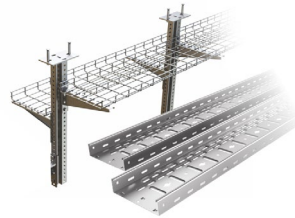
EAE PRODUCT PORTFOLIO



**LED
Lighting**



**Busbar
Power
Distribution
Systems**



**Cable Trays
&
Support
Systems**



**Rack
Cabinets
& LV
enclosures**



**Fit-out
Solutions**



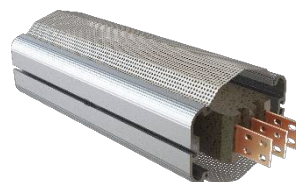
**Building &
Lighting
Automation
Systems**



2023
EAE BUSBAR



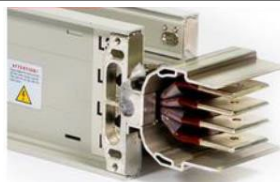
E-LINE MV



E-LINE CR



E-LINE KX



E-LINE KB



E-LINE KO



E-LINE MK



E-LINE DK



E-LINE DL



E-LINE TB



DABLINE

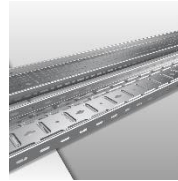


2023

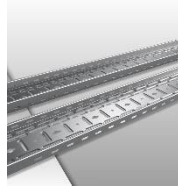
EAE CABLE TRAY & SUPPORT SYSTEMS



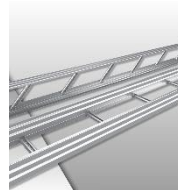
E-LINE UKS-UKFE
(pregalvanised)



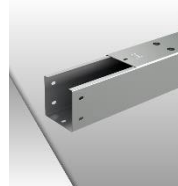
E-LINE UKFG-C
(pregalvanised)



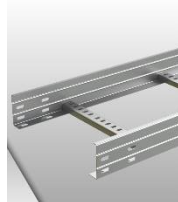
E-LINE KM
(pregalvanised)



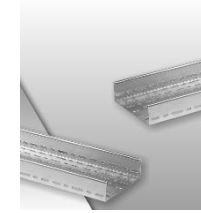
E-LINE TKS
(hot-dip & pregalvanised)



E-LINE KMH-KMA
(hot-dip galvanised)



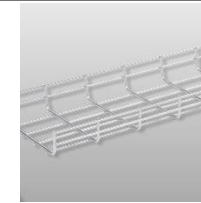
E-LINE CT
(hot-dip galvanised)



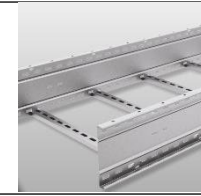
E-LINE CTK
(hot-dip galvanised)



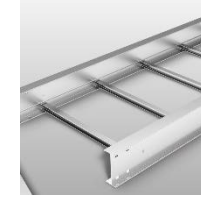
E-LINE TLS
(Wire mesh cable tray)



E-LINE KCA OG
(hot-dip & pregalvanised)



E-LINE KCA AL
(Aluminum cable ladder)

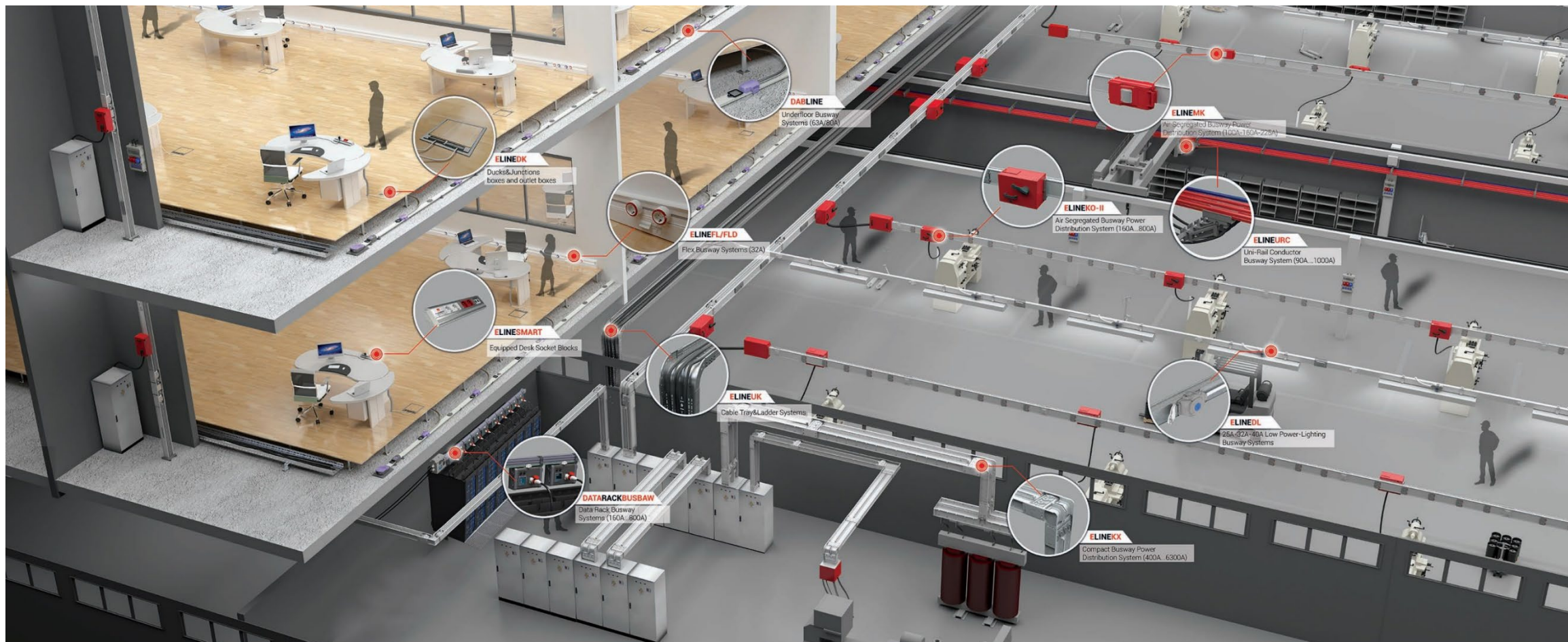


2023

Energy distribution systems



GERMANY



INDUSTRIAL HIGH-BAY



MARINE LIGHTING



**LINEAR TRUNKING
SYSTEMS**



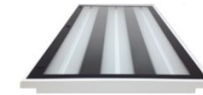
FLOODLIGHTS



DAMP-PROOF



SURFACE INSPECTION



**ROAD AND STREET
LIGHTING**



EXPROOF



**SURFACE-MOUNTED
AND PENDANT**



**DOWNLIGHTS
AND SPOTLIGHTS**



EMERGENCY LIGHTING



2023

EAE KABELTRAGSYSTEME



Switch cabinet



**Switch cabinet housing
stainless steel**



**Sub-distribution
for wall mounting**



**KabinPlus
KD Server**



**Switch cabinet housing
for outdoor use**



**KabinPlus
KS Seismic**



2023

EAE KNX BUILDING AND LIGHTING AUTOMATION



GERMANY

- **Devices for commercial and residential projects**



- **Devices for hotels**



- **Devices for industrial and commercial projects**

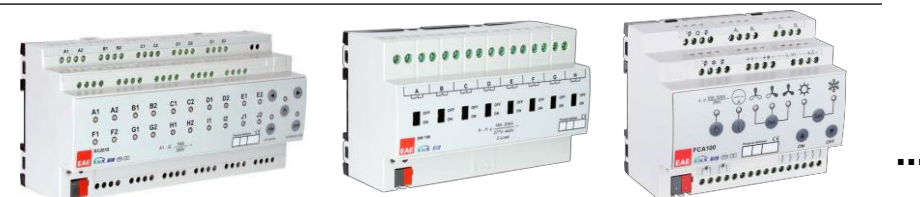
Sensors



KNX / DALI
Gateways



Actuators



Dimmers



Interfaces



and more...

2023 EAE KNX SOLUTIONS



Lighting Control



- DALI
- On/Off
- 1-10V
- Universal DIM (Phase cut)
- Emergency Lighting Reporting

Heating/Cooling Control



- Fancoil
- VRF/VRV Control
- Underfloor Heating
- Split AC Units

Shutter/Blind Control



- AC/DC Blind Control

Presence/Movement & Daylight Sensor



Smart Home/Residential Solutions



- Lighting/Shutter/Blind / Heating/Cooling control
- Mobile Integration
- IP Camera Integration
- Video Intercom

Hotel GRMS



- Lighting/Shutter/Blind/ Heating/Cooling control
- Door lock integration
- Presence Detection Without Card Holder
- DND/MUR Units
- Card Holder Units



2023

WHY EAE?



One Package Solution

- Busbar
- Lighting
- Cable Tray
- Switch Cabinets & LV Enclosures
- KNX



Product groups
matching perfectly



Price
advantage



Quick
respond



EAE Germany GmbH

CONTACT INFO



Stadionring 32, 40878 Ratingen



+49 2102 44142-0



germany@eaegroup.com



www.eaegermany.com



EAE Germany GmbH
Busbar | Lighting | Technology
Solutions for all Industries