



SAFYBOX
URIARTE GROUP

CATALOGUE

INDEX

SafyboxGroup.....	3
The advantages of polyester and certifications.....	4
Custom division (holes + laser marking).....	5
Safybox BRES.....	6
Characteristics of BRES.....	7
BRESrange.....	8
Safybox CA	20
Characteristics of CA.....	21
CA range.....	22
Safybox ART	35
Characteristics of ART.....	36
ART range.....	37
Safybox APM.....	41
Characteristics of ART.....	42
APM range.....	43
Sectors	48
CompetitiveAdvantages.....	49



WHO WE ARE?



Uriarte SafyBox belongs to the Uriarte Enclosures Group, a multinational holding with production plants in Spain, Poland and Portugal and presence and certifications spread over 5 continents.

We are specialized in manufacturing polyester reinforced with fiberglass enclosures since 1972.

Non-metallic boxes and cabinets that provide the best protected space to any electrical, water, gas, telecommunications, renewable and underground infrastructures, ideal in the most demanding and aggressive environments.

WHAT WE DO?

We offer 3 lines of business:

1. **Empty enclosure:** The widest range of boxes and cabinets on the market, leaders in the sector due to its character and original design.

We dominate the compression of thermosets (SMC/GPR) with 41 machines up to 1500 tons and the injection of plastics with 35 machines up to, 2,000 tons. We have a productive capacity of more than +10.000 pieces per day thanks to our automated plants updated to industry 4.0 and production systems update to the industry 4.0

2. **Customization:** Customized projects, fulfilling all your needs.

We mechanize any face of all our enclosures with 1 cutting robot in 5 sides, CNC machines and a center of cut by waterjet. In addition, we mark with laser your logo or bidi code permanently. Availability of our new 3D printing machine to complement the wide range of standard accessories.

3. **Full Solutions:** Your complete turnkey equipment with the support of our engineering and I+D department. We assemble all the components inside the enclosure for any project: Solar Sector, Utilities, Electric Vehicle, Railways, Airports, Industry, Street Lighting, etc.

We Are Enclosures: Above all, Our Team of People.

We want to enjoy every day at work and this is reflected in our relationship with our customers, partners and especially friends. Seriousness, honesty, and personalised attention... but always with a friendly smile.

Small details that make us unique.



THE ADVANTAGES OF POLYESTER AND CERTIFICATIONS

The safety and long lifespan of the cabinets is our priority.

A Cabinet / Box that breaks over time can no longer perform the functions for which it was specified. The selection of proper product is therefore critical, do not overestimate this decision! Keep your customers and your reputation safe.

- The plastic expands and shrinks with changes in temperature and melts with fire.
- Metal is corrosive and conducts electricity.

Our material is non-corrosive, self-extinguishing and resistant to extreme temperatures. We offer an alternative to metal and plastic cabinets. The polyester cabinets reinforced with fiber glass made in the process of pressing in hot mold from SMC (Sheet Molding Compounds).



The European market has long appreciated the ability and ease of use of such cabinets and their advantages over metallic.

THERMOPLASTIC

Vs

THERMOSET

Polyester is a thermoset material

RAW MATERIAL			METALIC ENCLOSURE	NO POLYESTER ENCLOSURE	POLYESTER ENCLOSURE SAFYBOX
DOUBLE INSULATION	Total protection	Electrically Non-conductive	1000 Vdc	1000 Vdc	1500 Vdc
SELF EXTINGUISHING	Does not feed flames and 100% halogen free.	960 °C. GWFI			960°C
AGGRESSIVE ENVIRONMENT RESISTANT UV	resistant stable extreme temperature changes		NO	NO	YES
MAXIMUM DURABILITY	Long Life standard use, Cero corrosion and chemical resistant		<5 year	<5 year	>40 year
ELECTROMAGNETIC COMPATIBILITY	Protecting electronics communications		No	Yes	Yes

Thermoplastics:

In the world of plastics, the thermoplastic family is a type of plastic that when is exposed to high temperatures deforms. It also melts down when is heated and hardens into a vitreous state when is cooled down.

Thermoplastics are polymers with a high molecular weight.

Thermosets:

Thermosetting plastics are generally stronger than thermoplastic materials due to the three-dimensional network of bonds (crosslinking), and are also better suited to high-temperature applications up to the decomposition temperature since they keep their shape as strong covalent bonds between polymer chains cannot be broken easily.

Choose your degree of customization

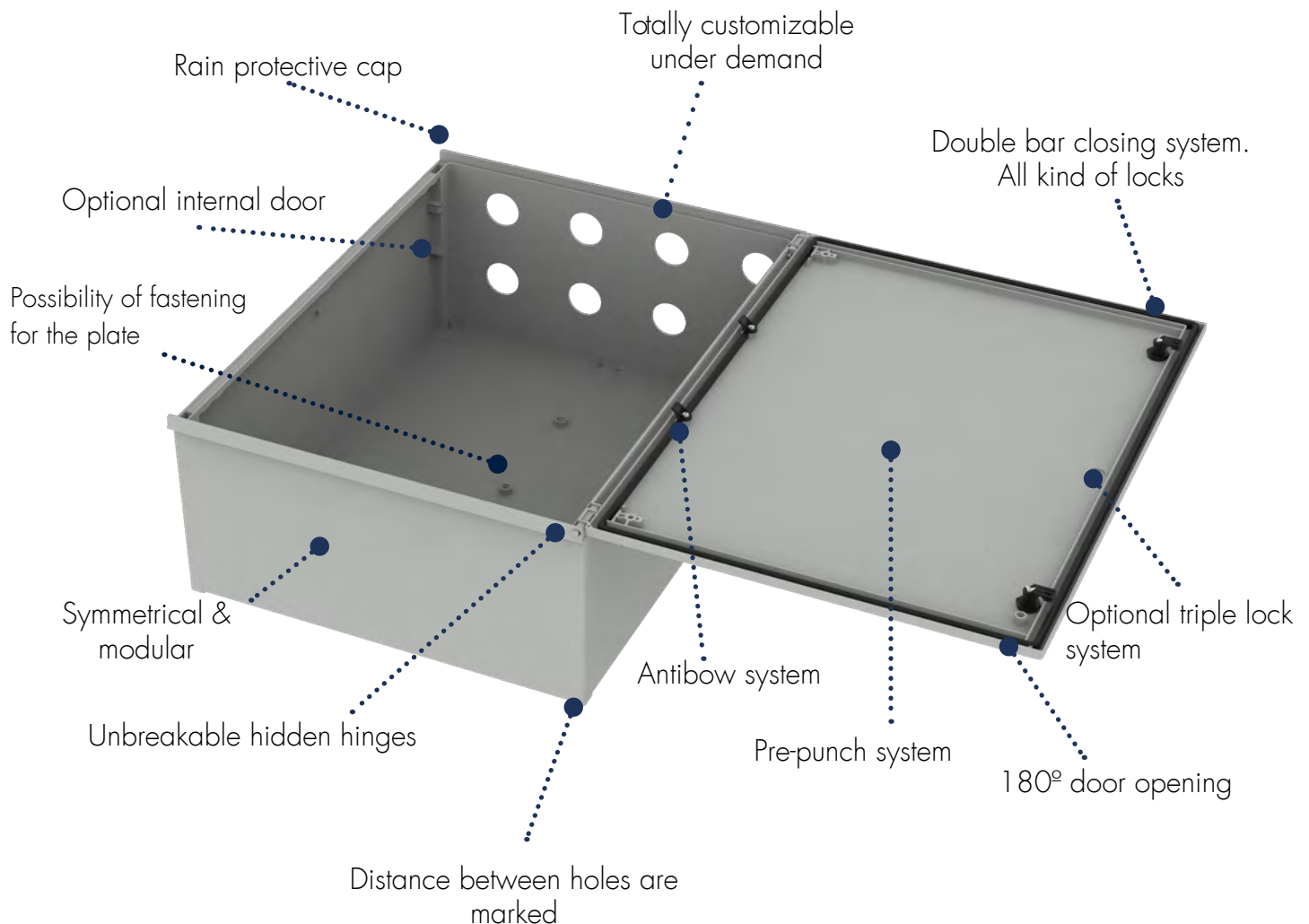


SAFYBOX BRES: Monoblock industrial enclosure



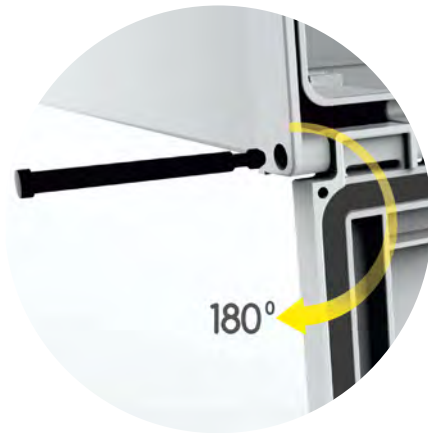
CHARACTERISTICS:

- Boxes and Cabinets made from fiberglass reinforced polyester, moulded by hot compression.
- Color Light Grey RAL 7035.
- Self-extinguishability: GWT 960° C. Halogen free. Double insulation. No electrical contact risks.
- Nominal voltage up to 1500 Vdc
- Degree of protection IP66 UNE 20324 (EN 60529).
- Certification of compliance IK10 with IEC62262 enclosure standard. Suitable for indoor or outdoor use.
- Large door opening (180°). Version with plain or glazed door.
- Anti-intruder hinges system.
- Customize service: color, machining, mounting, accessories, lacks, company logo.
- 2 locks with double bar insert or 1 lock with 3 action points and vandalism-proof.
- Version with metallic or polyester mounting plate.
- Light weight gives an easy installation. 40 years long life lasting without maintenance under standard environmental conditions.



NON-METALLIC HINGES

Quick insertion without tools



RAIN PROTECTION VISOR

Designed with a Visor or Canopy that protects the entrance of water inside the cabinet.



MAXIMUM SEALING

The installer does not compromise the watertightness and maintains the IP66



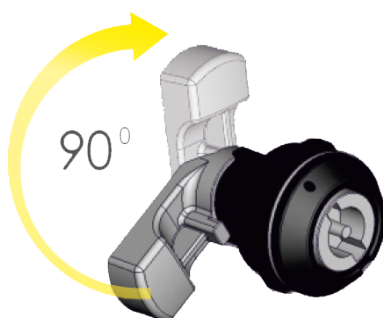
ANTI-PINCH WEDGE SYSTEM

Designs with up to 3 or 4 pressure points on the doors.



STANDARD DOUBLE BAR LATCH

It has a sealing system with thread.



MODULARITY

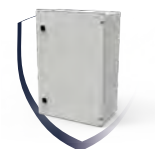
The connecting flanges make it possible to join several enclosures vertically without losing their IP degree



OPTIONAL TRIPLE LOCK

The inner side of the doors have a ZIG-ZAG design that provides greater mechanical resistance





Standard cabinet

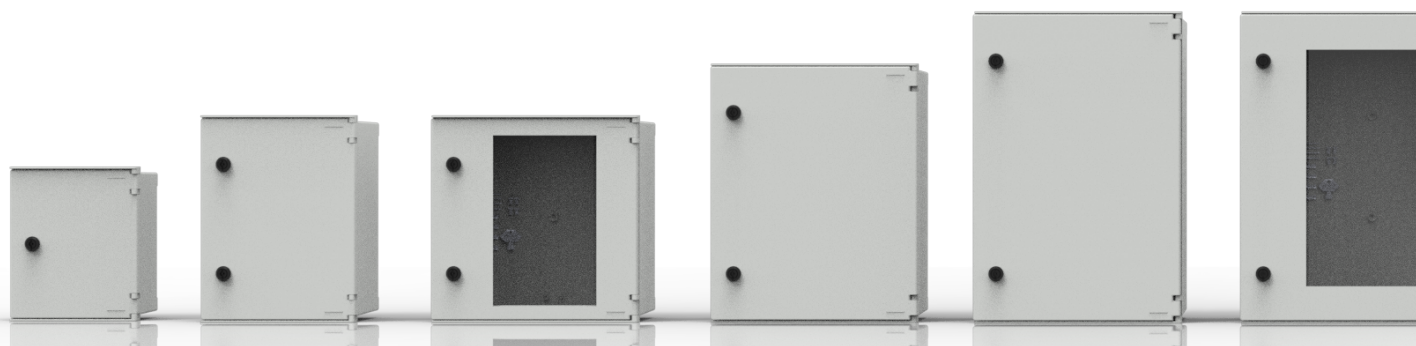
Includes: Empty cabinet + lag screws for wall mounting + double-bar lock + fixing screws for base plate.

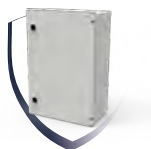
Reference	Description	Height x Width x Depth (mm)	Weight (Kg)
BRES-325	Empty standard enclosure 1 double-bar lock	300 x 250 x 140	1,93
BRES-43	Empty standard enclosure 2 double-bar lock	400 x 300 x 200	3,16
BRES-44	Empty standard enclosure 2 double-bar lock	400 x 400 x 200	4,01
BRES-54	Empty standard enclosure 2 double-bar lock	500 x 400 x 200	4,88
BRES-64	Empty standard enclosure 2 double-bar lock	600 x 400 x 230	5,88
BRES-65	Empty standard enclosure 2 double-bar lock	600 x 500 x 230	6,79
BRES-83	Empty standard enclosure 2 double-bar lock	800 x 300 x 230	5,86
BRES-86	Empty standard enclosure 2 double-bar lock	800 x 600 x 300	11,96
BRES-812-2P	Empty standard enclosure 2 double-bar lock	800x1211x300	22.74

Glazed cabinet

Includes: Empty cabinet + lag screws for wall mounting + double-bar lock + fixing screws for base plate.

Reference	Description	Height x Width x Depth (mm)	Weight (Kg)
BRES-325P	Empty cabinet with transparent window	300 x 250 x 140	1,93
BRES-43P	Empty cabinet with transparent window	400 x 300 x 200	3,16
BRES-44P	Empty cabinet with transparent window	400 x 400 x 200	4,01
BRES-54P	Empty cabinet with transparent window	500 x 400 x 200	4,88
BRES-64P	Empty cabinet with transparent window	600 x 400 x 230	5,88
BRES-65P	Empty cabinet with transparent window	600 x 500 x 230	6,79
BRES-83P	Empty cabinet with transparent window	800 x 300 x 230	5,86
BRES-86P	Empty cabinet with transparent window	800 x 600 x 300	11,96
BRES-812P-2P	Empty cabinet with transparent window	800x1211x300	22,74





Triple lock closing system cabinet

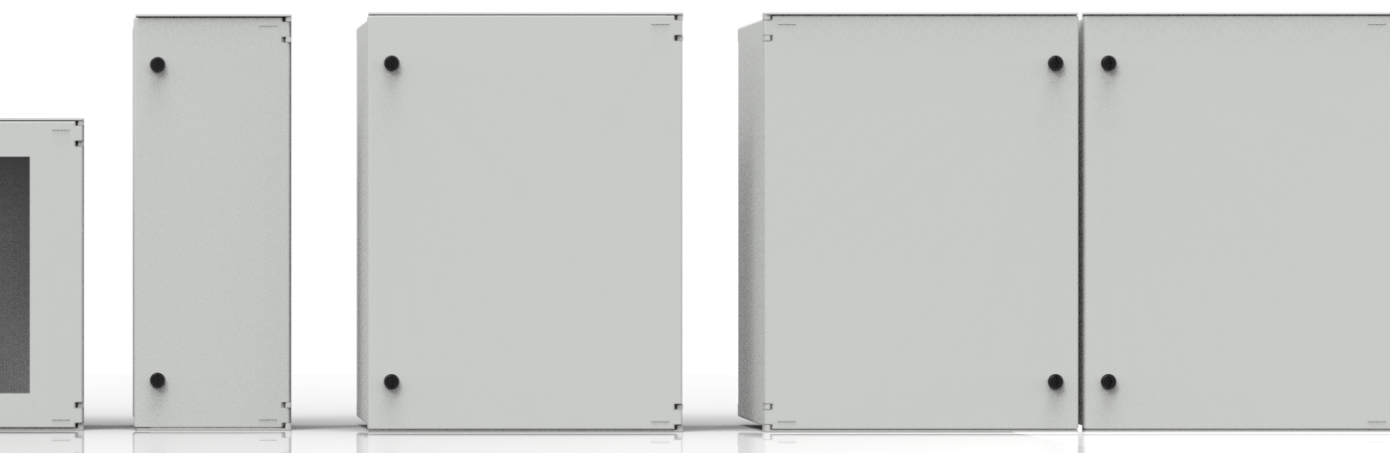
Includes: Empty cabinet + lag screws for wall mounting + triple locking handle with aluminum bolts and padlock device + fixing screws for base plate. Not included: European locking cylinder.

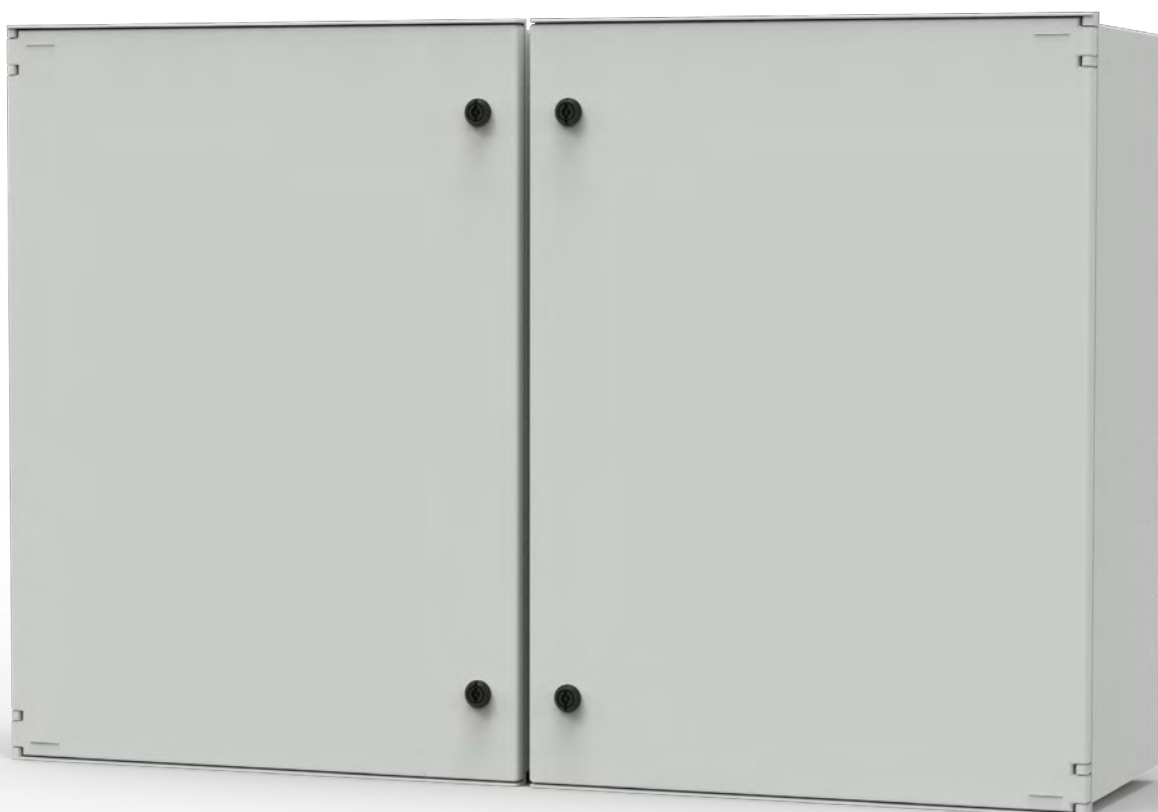
Reference	Description	Height x Width x Depth (mm)	Weight (Kg)
BRES-43-3L-DC	BRES empty cabinet with handle with triple lock	400 x 300 x 200	3,16
BRES-44-3L-DC	BRES empty cabinet with handle with triple lock	400 x 400 x 200	4,01
BRES-54-3L-DC	BRES empty cabinet with handle with triple lock	500 x 400 x 200	4,88
BRES-64-3L-DC	BRES empty cabinet with handle with triple lock	600 x 400 x 230	5,88
BRES-65-3L-DC	BRES empty cabinet with handle with triple lock	600 x 500 x 230	6,79
BRES-83-3L-DC	BRES empty cabinet with handle with triple lock	800 x 300 x 230	5,86
BRES-86-3L-DC	BRES empty cabinet with handle with triple lock	800 x 600 x 300	11,96
BRES-812-2P-3L-DC	BRES empty cabinet with handle with triple lock	800x1211x300	22,74

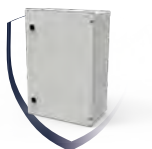
Triple lock closing system glazed cabinet

Includes: Empty cabinet + lag screws for wall mounting + triple locking handle with aluminum bolts and padlock device + fixing screws for base plate. Not included: European locking cylinder.

Reference	Description	Height x Width x Depth (mm)	Weight (Kg)
BRES-43P-3L-DC	BRES empty cabinet with window and handle with triple lock	400 x 300 x 200	3,16
BRES-44P-3L-DC	BRES empty cabinet with window and handle with triple lock	400 x 400 x 200	4,01
BRES-54P-3L-DC	BRES empty cabinet with window and handle with triple lock	500 x 400 x 200	4,88
BRES-64P-3L-DC	BRES empty cabinet with window and handle with triple lock	600 x 400 x 230	5,88
BRES-65P-3L-DC	BRES empty cabinet with window and handle with triple lock	600 x 500 x 230	6,79
BRES-83P-3L-DC	BRES empty cabinet with window and handle with triple lock	800 x 300 x 230	5,86
BRES-86P-3L-DC	BRES empty cabinet with window and handle with triple lock	800 x 600 x 300	11,96
BRES-812P-2P-3L-DC	BRES empty cabinet with window and handle with triple lock	800x1211x300	22,74







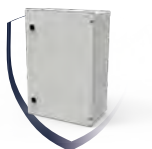
Standard horizontal empty cabinet

Door opening downward

Reference	Description	Height x Width x Depth (mm)	Weight (Kg)
BRES-253	BRES empty cabinet horizontal position	250 X 300 X 140	1,93
BRES-34	BRES empty cabinet horizontal position	300 X 400 X 200	3,16
BRES-45	BRES empty cabinet horizontal position	400 X 500 X 200	5,80
BRES-46	BRES empty cabinet horizontal position	400 X 600 X 230	7,60
BRES-56	BRES empty cabinet horizontal position	500 X 600 X 230	8,40
BRES-38	BRES empty cabinet horizontal position	300 X 800 X 230	5,86
BRES-68	BRES empty cabinet horizontal position	600 X 800 X 300	13,70







Polyester plates 4mm thick

BRES-65 + PBP-65

Reference	Description
PBP-325	Insulating base plate for BRES-325
PBP-43	Insulating base plate for BRES-43
PBP-44	Insulating base plate for BRES-44
PBP-54	Insulating base plate for BRES-54
PBP-64	Insulating base plate for BRES-64
PBP-65	Insulating base plate for BRES-65
PBP-83	Insulating base plate for BRES-83
PBP-86	Insulating base plate for BRES-86



Tolerance: ± 1.5 mm

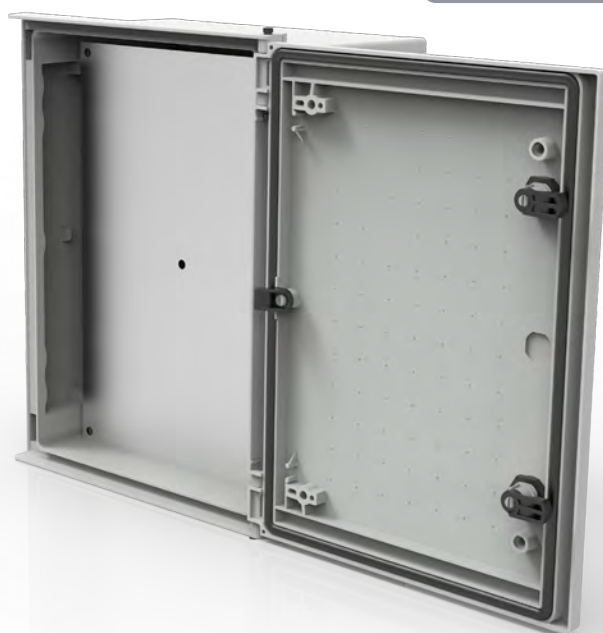


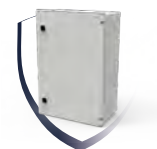
Tolerance: ± 1.5 mm

Metallic plates 4mm thick

Reference	Description
PBM-325	Metal base plate for BRES-325
PBM-43	Metal base plate for BRES-43
PBM-44	Metal base plate for BRES-44
PBM-54	Metal base plate for BRES-54
PBM-64	Metal base plate for BRES-64
PBM-65	Metal base plate for BRES-65
PBM-83	Metal base plate for BRES-83
PBM-86	Metal base plate for BRES-86

BRES-43 + PBM-43





Chasis for breakers

Reference	Description
CHM-325	Capacity for 20 modules, in BRES-325 (2 rows)
CHM-43	Capacity for 24 modules, in BRES-43 (2 rows)
CHM-44	Capacity for 36 modules, in BRES-44 (2 rows)
CHM-54	Capacity for 54 modules, in BRES-54 (3 rows)
CHM-64	Capacity for 72 modules, in BRES-64 (4 rows)
CHM-65	Capacity for 96 modules, in BRES-65 (4 rows)
CHM-83	Capacity for 70 modules, in BRES-83 (5 rows)
CHM-86	Capacity for 145 modules, in BRES-86 (5 rows)
TEX-18-SP	18 mm removable cover, for unused modules

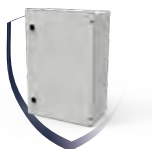


BRES-44 + CHM-44



BRES-64 + CHM-64





Internal door

Reference	Description
PUI-325	Polyester internal door for BRES-325
PUI-43	Polyester internal door for BRES-43
PUI-44	Polyester internal door for BRES-44
PUI-54	Polyester internal door for BRES-54
PUI-64	Polyester internal door for BRES-64
PUI-65	Polyester internal door for BRES-65
PUI-83	Polyester internal door for BRES-83
PUI-86	Polyester internal door for BRES-86

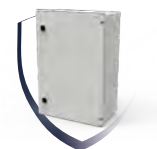


BRES-83 + PUI-83

BRES-44 + PUI-44

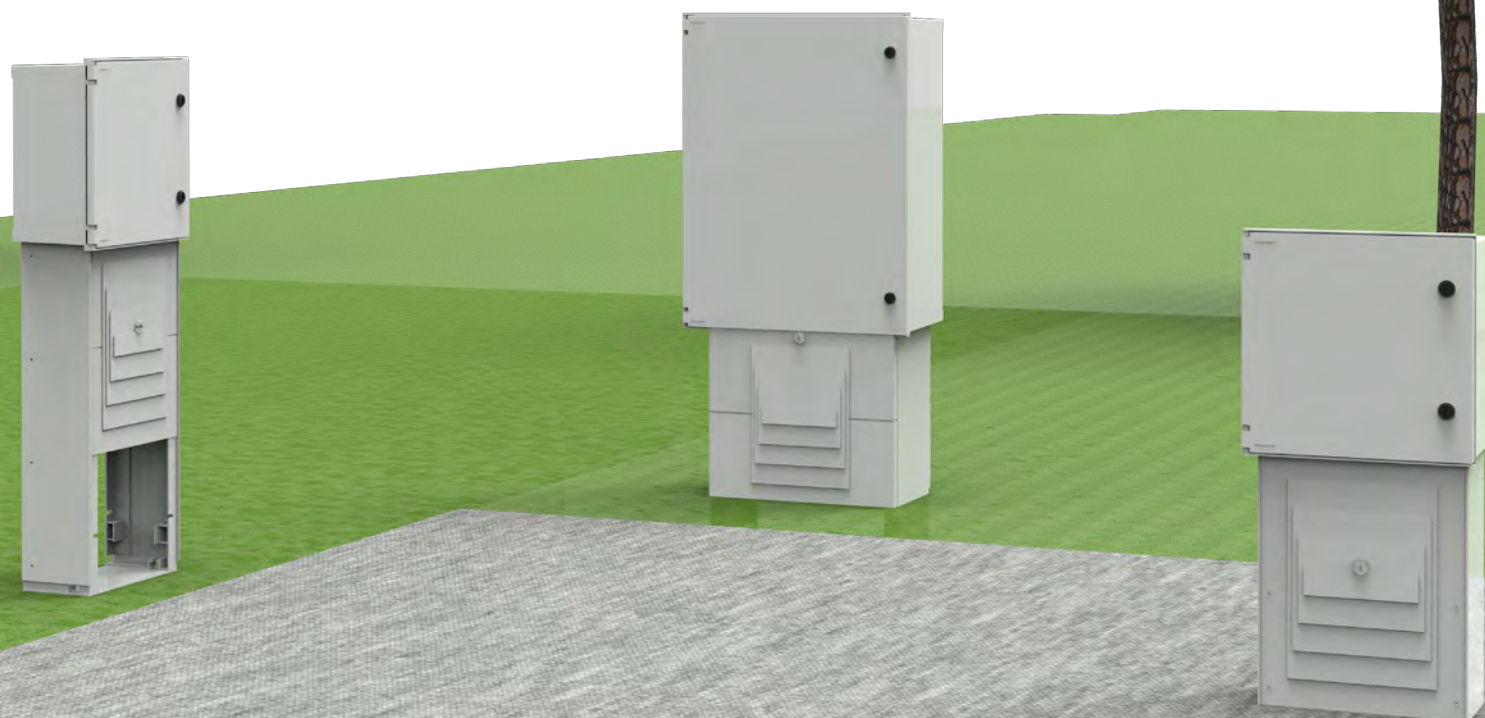
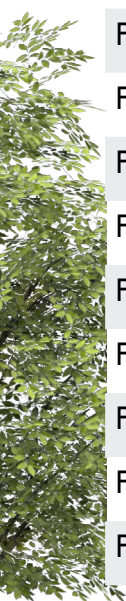
BRES-43 + PUI-43

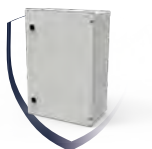




Pedestals

Reference	Description	Height x Width x Depth (mm)
F0-44	Pedestals for BRES-44	500 X 365 X 170
F1-44	Pedestals for BRES-44	750 X 365 X 170
F2-44	Pedestals for BRES-44	1000 X 365 X 170
F0-54	Pedestals for BRES-54	500 X 365 X 170
F1-54	Pedestals for BRES-54	750 X 365 X 170
F2-54	Pedestals for BRES-54	1000 X 365 X 170
F0-64	Pedestals for BRES-64	500 X 365 X 200
F1-64	Pedestals for BRES-64	750 X 365 X 200
F2-64	Pedestals for BRES-64	1000 X 365 X 200
F0-65	Pedestals for BRES-65	500 X 465 X 200
F1-65	Pedestals for BRES-65	750 X 465 X 200
F2-65	Pedestals for BRES-65	1000 X 465 X 200
F0-86	Pedestals for BRES-86	500 X 500 X 300
F1-86	Pedestals for BRES-86	750 X 500 X 300
F2-86	Pedestals for BRES-86	1000 X 500 X 300



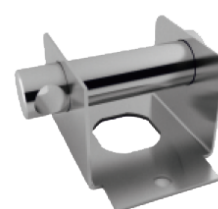


Lock systems

Reference	Description
CDB-10-SP	Double-bar lock
CTR-11	Triangular lock of 11 mm
CML-12-SP	Locking with manual handle and key
CP-SL	Manual locking without key
CBC-13-IN	Lock for padlocking, stainless steel
CBC-13	Lock for padlocking, stainless steel
LLD-10-SP	Double bar key
EJB-BRES-SP	Hinge shaft



CBC-13-IN

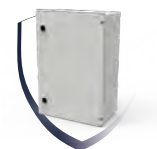


CBC-13

Door retainers

Reference	Description
BO-BRES-RETENE	Retainers for the entire range of BRES cabinets. (2 units)





Connection flanges

Reference	Description
UA-230X100	VERTICAL connection flange on the top and bottom side for BRES-325 and BRES-43
UA-350X150	VERTICAL connection flange on the top and bottom side for BRES-44, BRES-54, BRES-64, BRES-65, BRES-83 and BRES-86
UA-350X150-B	Connecting flange (HORIZONTAL+VERTICAL) for sidewalls for the sides for BRES-54, BRES-64, BRES-65, BRES-83 y BRES-86



Door retainers

Reference	Description
BO-DV-M	Ventilation devices . 2 unit
BO-DV-G	Big ventilation devices . 2 unit
DV-IP66-SP	Ventilation devices. 2 unit.



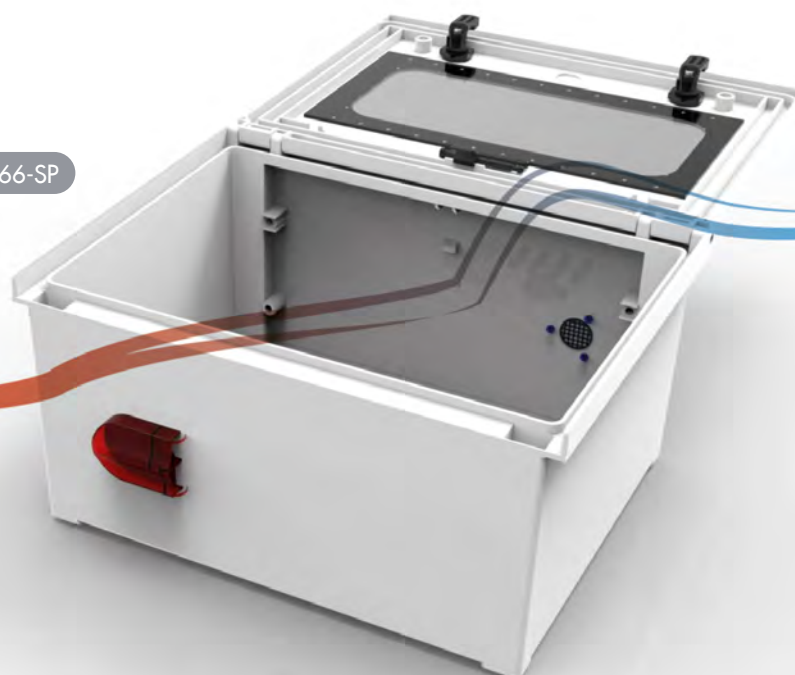
BO-DV-G

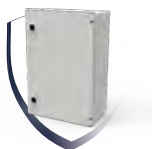


BO-DV-M



DV-IP66-SP

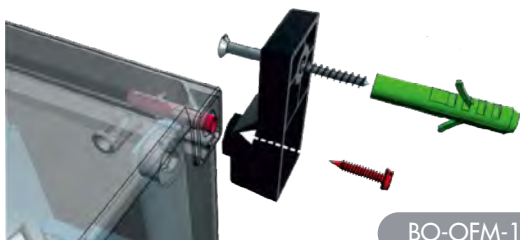




Pole mounting brackets

Reference	Description
BO-OFM-14	Pole mounting brackets with inside fixing screw (set of 4 units)
BO-OFM-14-B	Pole mounting brackets with external fixing screw (set of 4 units)
BO-OFM-14-F	Pole mounting brackets to SQUARE post by strap (set of 4 units)
BO-OFM-14-B44-86	Wall mounting lug with external fixing screw (set of 4 units) BRES-44 and BRES-86

BO-OFM-14-B44-86



BO-OFM-14-B



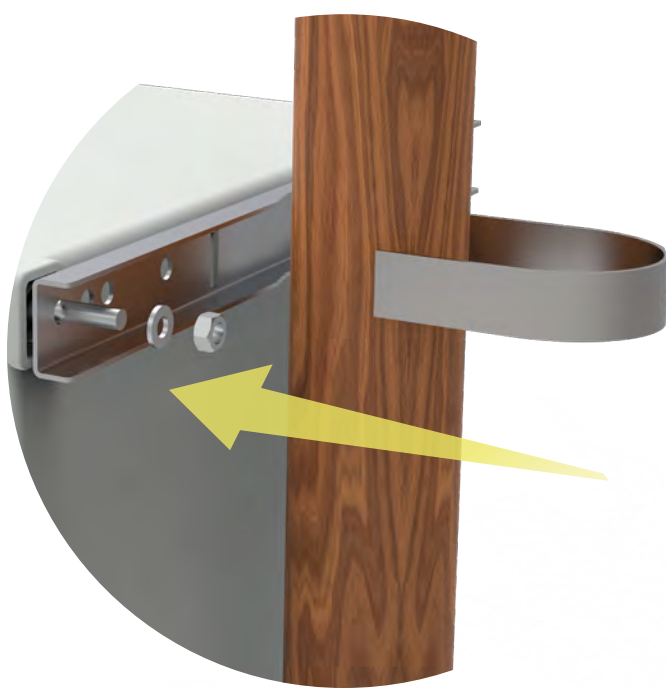
BO-OFM-14-F



BO-OFM-14

Pole mounting device

Reference	Description
SOP-POST-X3	Round pole support for models BRES-325, BRES-43, BRES-83
SOP-POST-X4	Round pole support for models BRES-44, BRES-54, BRES-64
SOP-POST-X5	Round pole support for model BRES-65
SOP-POST-X6	Round pole support for model BRES-86



SAFYBOX CA: GRP polyester monoblock industrial boxes



CHARACTERISTICS:

- Polyester boxes for low voltage electrical panels.
- Color RAL7035 and double insulation IP66 IK10.
- Nominal voltage up to 1500 Vdc
- The range of CA boxes in glass reinforced polyester (GRP BOX) allows the connection to make large modular panels and meter boxes, according to the need of any installation.
- They are resistant to harsh chemicals and hygroscopic materials without absorbing water.
- Resistant to extreme temperatures $<30^{\circ}\text{C}$, $>85^{\circ}\text{C}$ thanks to the polyurethane gasket.
- Fire retardants, self-extinguishing, resistant to corrosion and external impacts.
- A large amount of fixing accessories completes our offer.

CA-43A



CA-63AS



CA-32



SEALABLE

The screws have the possibility of being sealed.



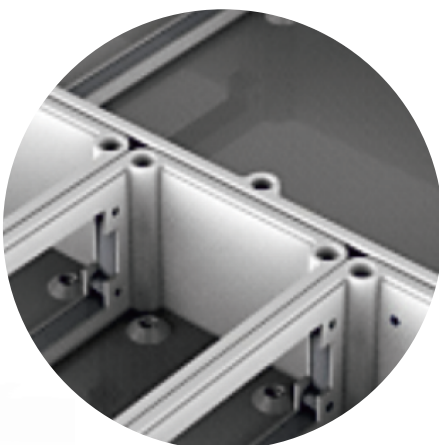
INJECTED GASKET

The gasket is injected by robot to avoid cuts or gaps that may compromise the IP protection.



TOTAL MODULARITY

Sides of the same number can be joined by means of connecting flanges, machined with a simple drill hole.



UV-RESISTANT POLYCARBONATE LIDS

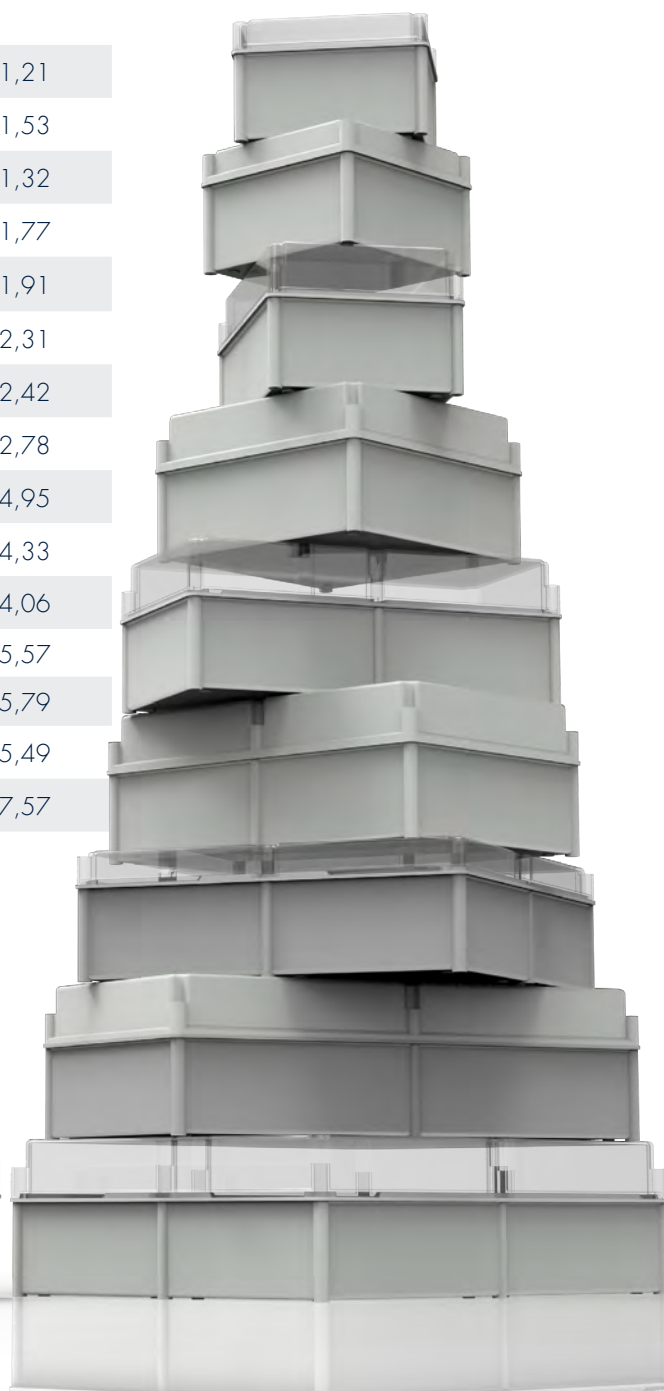
The same 125mm high body, but with different covers, provides multiple combinations to form the frame.

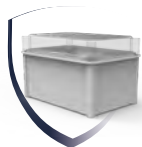


Transparent & opaque cover

Includes: polyester body, UV polycarbonate cover and rubber gasket. Also TFT-4000 locking screws; M6x10 screws for base plate. CA-1515, CA-215, CA-220 and CA-315 have a polyamide body.

Transparent reference	Opaque reference	Height x Width x Depth (mm)	Weight (Kg)
CA-1515	CA-1515S	135 x 135 x 130	0,36
CA-215	CA-215S	180 x 135 x 130	0,41
CA-220	CA-220S	180 x 180 x 130	0,68
CA-315	CA-315S	270 x 135 x 130	0,77
CA-32	CA-32S	270 x 180 x 170	1,21
CA-33	CA-33S	270 x 270 x 170	1,53
CA-42	CA-42S	360 x 180 x 170	1,32
CA-43	CA-43S	360 x 270 x 170	1,77
CA-43A	CA-43AS	360 x 270 x 205	1,91
CA-44	CA-44S	360 x 360 x 170	2,31
CA-44A	CA-44AS	360 x 360 x 205	2,42
CA-63	CA-63S	540 x 270 x 170	2,78
CA-63A	CA-63AS	540 x 270 x 205	4,95
CA-64	CA-64S	540 x 360 x 170	4,33
CA-64A	CA-64AS	540 x 360 x 205	4,06
CA-66	CA-66S	540 x 540 x 170	5,57
CA-66A	CA-66AS	540 x 540 x 205	5,79
CA-84A	CA-84AS	720 x 360 x 205	5,49
CA-86A	CA-86AS	720 x 540 x 205	7,57





Transparent and opaque covers

Transparent reference

TT-1515-CJ

TT-215-CJ

TT-220-CJ

TT-315-CJ

TT-32-CJ

TT-33-CJ

TT-42-CJ

TT-43-CJ

TT-43A-CJ

TT-44-CJ

TT-44A-CJ

TT-63-CJ

TT-63A-CJ

TT-64-CJ

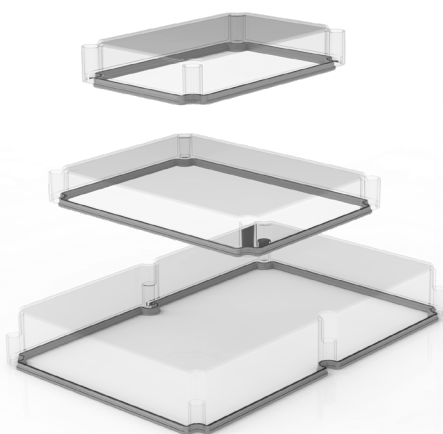
TT-64A-CJ

TT-66-CJ

TT-66A-CJ

TT-84A-CJ

TT-86A-CJ



Opaque reference

TO-1515-CJ

TO-215-CJ

TO-220-CJ

TO-315-CJ

TO-32-CJ

TO-33-CJ

TO-42-CJ

TO-43-CJ

TO-43A-CJ

TO-44-CJ

TO-44A-CJ

TO-63-CJ

TO-63A-CJ

TO-64-CJ

TO-64A-CJ

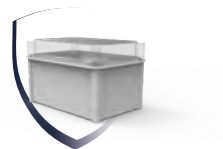
TO-66-CJ

TO-66A-CJ

TO-84A-CJ

TO-86A-CJ





Polyester base plates 4mm

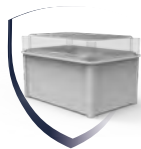
Reference	Description
PP-1515	Box plate for CA-1515
PP-215	Box plate for CA-215
PP-220	Box plate for CA-220
PP-315	Box plate for CA-315
PP-32	Box plate for CA-32
PP-33	Box plate for CA-33
PP-42	Box plate for CA-42
PP-43	Box plate for CA-43
PP-44	Box plate for CA-44
PP-63	Box plate for CA-63
PP-64	Box plate for CA-64
PP-66	Box plate for CA-66
PP-84	Box plate for CA-84
PP-86	Box plate for CA-86



Tolerance: ± 1.5 mm

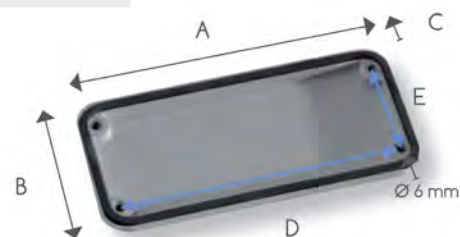
CA-64 + PP-64





Flanges for standardized openings

Reference	Description	A	B	C	D	E
TC-02-CJ	Sealing cover with gasket and screws for opening No. 2	133	105	13	106	68
TC-03-CJ	Sealing cover with gasket and screws for opening No. 3	223	105	13	206	68
TC-04-CJ	Sealing cover with gasket and screws for opening No. 4	313	105	13	286	68



TC-03-CJ



TC-04-CJ



Door retainers

Reference	Description
BO-DV-M	Ventilation devices. 2 unit
BO-DV-G	Big ventilation devices. 2 unit
DV-IP66-SP	Ventilation devices. 2 unit.

BO-DV-G

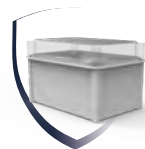


BO-DV-M



DV-IP66-SP

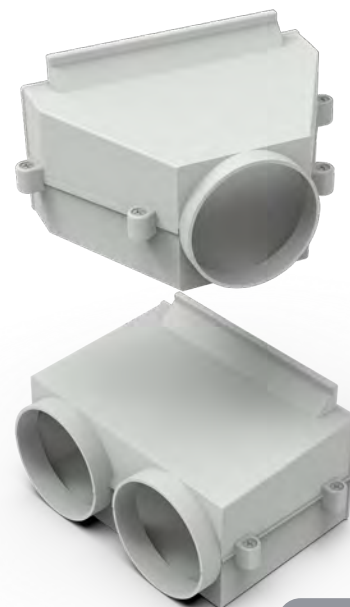




Cable boxes

CCPS-03

Reference	Description
BPS-03	Single split flange for opening No. 3
BPD-03	Double split flange for opening No. 3
CC-03-CJ	Blind cable box with gasket and hardware, for opening No. 3
CC-04-CJ	Blind cable box with gasket and hardware, for opening No. 4
CCPD-03	Double split cable box with gasket and hardware, for opening No. 3
CCPS-03	Double split cable box with gasket and hardware, for opening No. 3
DON-45	Shutter disc 4 outlets - 91 mm diameter



CCPD-03

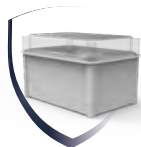
CC-04-CJ



CC-03-CJ

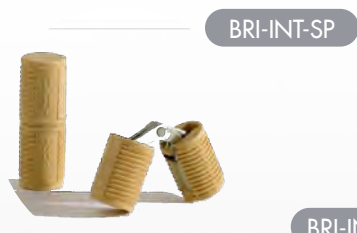


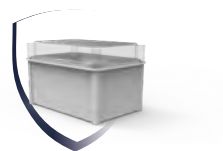
DON-45



Hinges

Reference	Description
BO-BRE-EXT-G	Exterior rigid hinge (set of 2). Large. From CA-32 to CA-86A
BRI-INT-SP	Inner rigid hinge (1 unit)
BRI-INT-TOR-SP	Rigid inner brass hinge with screw fastening (1 unit)





Flanges for standardized openings

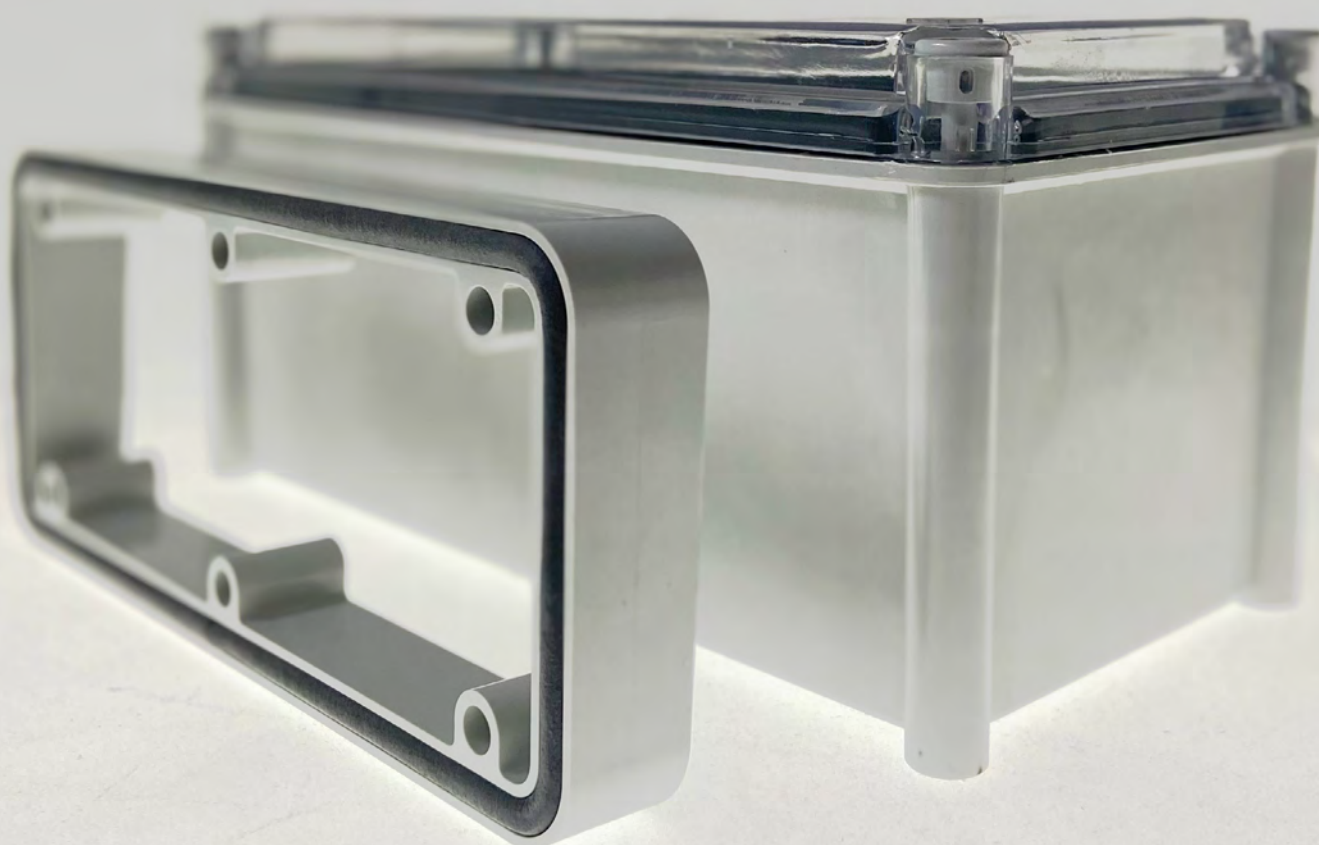
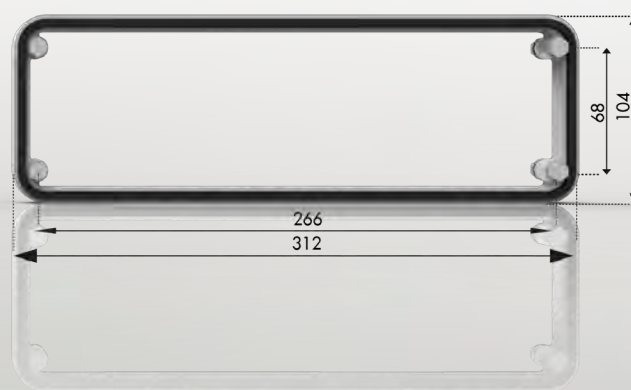
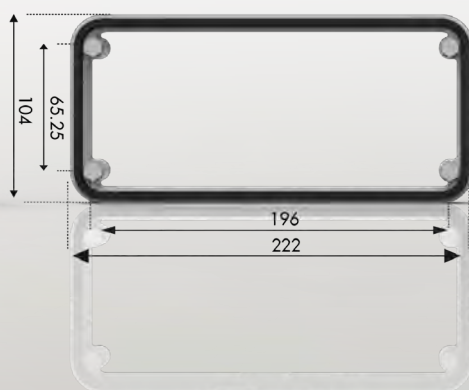
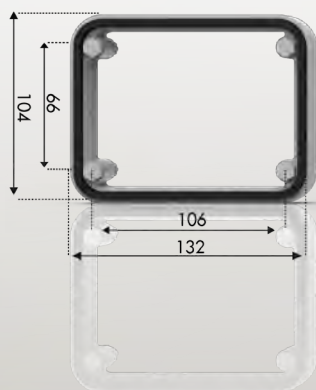
Reference	Description
BA-20-CJ	Coupling flange with gasket and bolts.
BA-30-CJ	Coupling flange with gasket and bolts.
BA-40-CJ	Coupling flange with gasket and bolts.

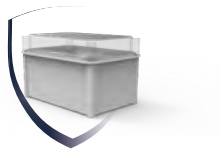


BA-20-CJ

BA-30-CJ

BA-40-CJ





Reference

Description

BO-OFC-400

Plastic mounting lugs for CA boxes (4 unit kit) 50x20x10mm, except for models CA-1515, CA-215, Ca-220 and CA-315 with transparent and opaque lid.

BO-OFC-400



Screws for boxes

Reference

Description

TFT-4000

Screw models CA-1515, CA-215,CA-220 & CA-315

TFT-400

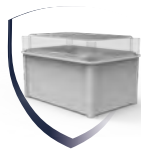
Screw for other models. Screwdriver drive

TFT-400-M

Screw for other models. Manual operation







Peepholes

Reference	Description
TR-4	Frame with manhole cover (94x77x16 mm)
TR-4A	Frame with manhole cover (94x77x25 mm)
TR-6	Frame with manhole cover (130x77x16 mm)
TR-6A	Frame with manhole cover (130x77x25 mm)
TR-8	Frame with manhole cover (163x77x16 mm)
TR-8A	Frame with manhole cover (163x77x25 mm)
TR-10	Frame with manhole cover (200x77x16 mm)
TR-10A	Frame with manhole cover (200x77x25 mm)
TR-12	Frame with manhole cover (233x77x16 mm)
TR-12A	Frame with manhole cover (233x77x25 mm)
TR-16	Frame with manhole cover (165x195x13 mm)
TR-20-U	Frame with manhole cover (205x158x15 mm)
TR-24	Frame with manhole cover (233x196x13 mm)



Pole mounting device

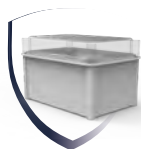
Reference	Description
SOP-POST-X3	Round pole support for models CA-32, CA-33, CA-43, CA-63
SOP-POST-X4	Round pole support for models CA-44, CA-64, CA-84A
SOP-POST-X6	Round pole support for model CA-66, CA-86A



Cable glands

Reference	Metric	MIN	MAX	A	B	P1	P2
PG-7	M-12	2,5	6,5	9	12,5	16	19
PG-9	M-16	4,5	8	9	15,5	19	22
PG-11	M-20	5	10	9	18,6	22	24
PG-13-5	M-20	6	12	10	20,4	24	26
PG-16	M-25	7	14	10	22,5	27	30
PG-21	M-32	11	18	12	28,3	33	36
PG-29	M-32	17	25	13	37	42	46
PG-36	M-40	22	32	16	47	52	56
PG-42	M-50	26	39	17	54	60	65
PG-48	M-63	30	44	18	59,3	64	70





Empty boxes centralization series - IP41 and IK10.
Modules for 3, 4 single-phase and 3 three-phase meters in line.

Reference	Description	Height x Width x Depth (mm)	Weight (Kg)
CA-4829	Empty enclosure IP41	480 x 290 x 195	2,79
CA-4840	Empty enclosure IP41	480 x 405 x 195	3,62
CA-5840	Empty enclosure IP41	580 x 405 x 195	4,29
CA-6340	Empty enclosure IP41	630 x 405 x 195	4,72
CA-6329	Empty enclosure IP41	630 x 290 x 195	3,32





SAFYBOX ART: Outdoor cabinets with roof



CHARACTERISTICS:

- The ART presents a modern design, ideal for integration with urban areas.
- Made of polyester reinforced with fiber glass in light gray color RAL 7035.
- The ART is valued by its robustness, and resistance to vandalism and aggressive environments.
- Our ART is reinforced and manufactured with a higher thickness than other competitors, offering an impact resistance over IK10.
- Mounting on pedestal or directly on ground, for both, indoor and outdoor use.



WATER DRAINAGE CANOPY

Insulating and reinforced upper canopy, prevents water ingress



WALL THICKNESS

Our cabinet is reinforced and has a superior wall thickness



MODULARITY

The design allows to join cabinets vertically without the need of special parts.



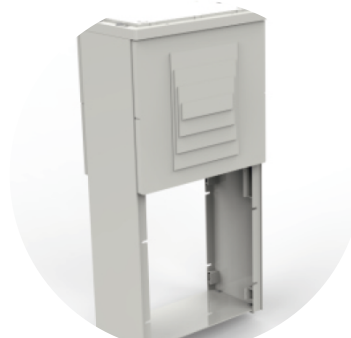
STAGGERED DOOR

Doors with a staggered design that gives it an innovative and updated design.



PEDESTALS

For fastening to the ground or directly on concrete.



KIT

They can be supplied disassembled in KIT



TRIPLE CLOSING

Cabinets with triple closing

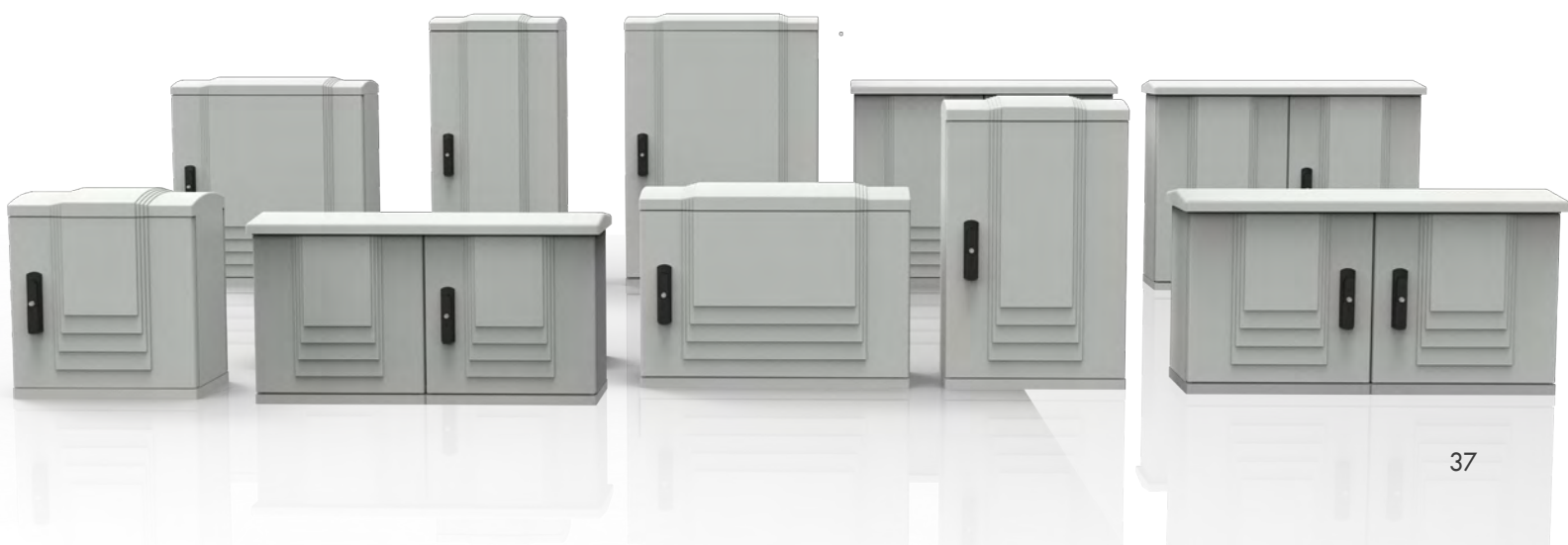




Outdoor IP43 enclosures, with conopy.

Includes: Assembled cabinet + Door with triangular handle lock and padlock + base plate fastening screws.

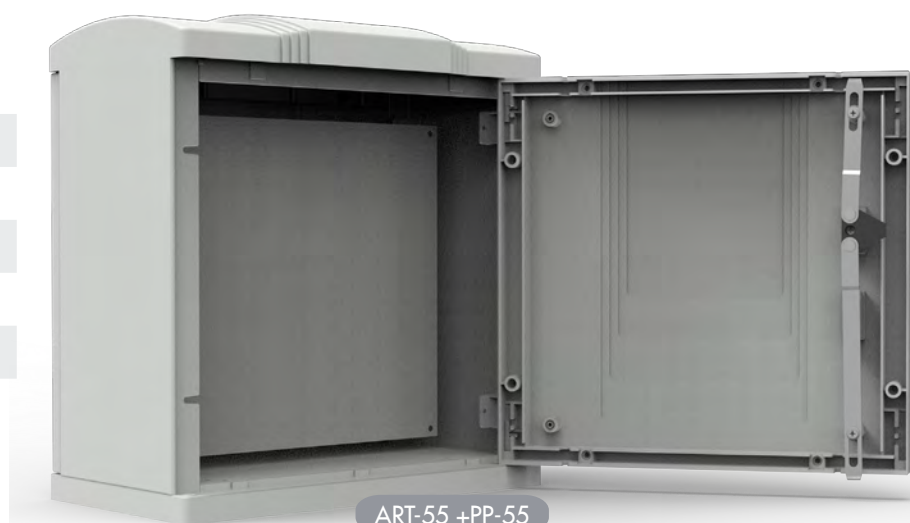
Reference	Description	Height x Width x Depth (mm)	Weight (Kg)
ART-55	ART empty cabinet with triple locking handle	500 x 500 x 300	13,60
ART-57	ART empty cabinet with triple locking handle	500 x 750 x 300	17,00
ART-75	ART empty cabinet with triple locking handle	750 x 500 x 300	17,00
ART-77	ART empty cabinet with triple locking handle	750 x 750 x 300	22,00
ART-105	ART empty cabinet with triple locking handle	1000 x 500 x 300	19,00
ART-107	ART empty cabinet with triple locking handle	1000 x 750 x 300	27,00
ART-1010-2P	Empty cabinet with 2 doors and triple locking system	1000 x 1000 x 300	43,00
ART-710-2P	Empty cabinet with 2 doors and triple locking system	750 x 1000 x 300	39,00
ART-510-2P	Empty cabinet with 2 doors and triple locking system	500 x 1000 x 300	32,20





Polyester mounting plate 4mm

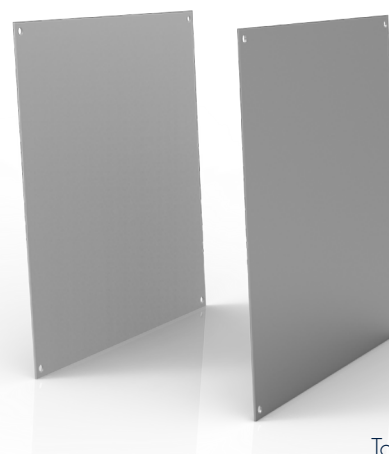
Reference	Description
PMP-55	Polyester plate for ART-55 cabinet
PMP-57	Polyester plate for ART-57 cabinet
PMP-75	Polyester plate for ART-75 cabinet
PMP-77	Polyester plate for ART-77 cabinet
PMP-105	Polyester plate for ART-105 cabinet
PMP-107	Polyester plate for ART-107 cabinet



Tolerance: ± 1.5 mm

Metal mounting plate 2mm

Reference	Description
PMM-55	Metal plate for ART-55 cabinet
PMM-57	Metal plate for ART-57 cabinet
PMM-75	Metal plate for ART-75 cabinet
PMM-77	Metal plate for ART-77 cabinet
PMM-105	Metal plate for ART-105 cabinet
PMM-107	Metal plate for ART-107 cabinet



Tolerance: ± 1.5 mm





Polyester plinth for ART cabinets

Reference	Description	Height x Width x Depth (mm)
F1-500	For ART-55, ART-75 and ART-105 cabinet	500x750x300
F2-500	For ART-55, ART-75 and ART-105 cabinet	500x1000x300
F1-750	For ART-57, ART-77 and ART-107 cabinet	750x750x300
F2-750	For ART-57, ART-77 and ART-107 cabinet	750x1000x300





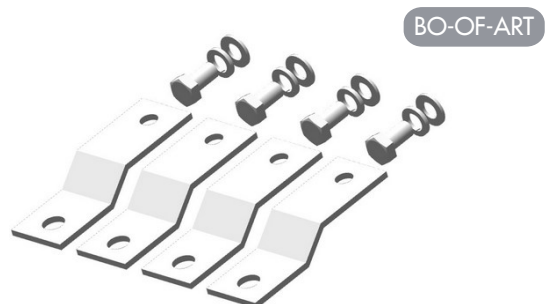
Post supports and metal lugs

Reference

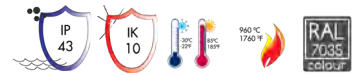
Description

BO-OF-ART

Set of metal lugs (4 units)



SAFYBOX APM: Flush mounting cabinets for meters and protection fuses.



CHARACTERISTICS:

- Flush mounting cabinet. It can be installed on wall anchor brackets fixed on the corners of the cabinet.
- APM cabinet is designed with reinforcement ribs to prevent its deformation when flush mounting.
- This cabinet is modular. It allows compiling 2-3 cabinets ensuring the IP43 degree.
- UV resistant window display, locks, shutter bolts and non metallic hinges.
- Wide range of accessories such as pole mounting system, underground pedestals, ventilation devices...



REINFORCED CABINET

It has a higher wall thickness



QUARTER-TURN LOCKING

No metal parts



CLOSING

The standard is supplied with a simple 1-point locking system, but a 3-point system with espagnolette bolts can be used.



STAGGERED DOOR

Reinforces the door, giving it greater resistance to impact.



NON-METALLIC HINGES

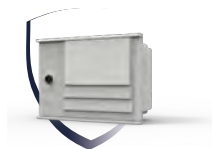
Easy assembly and disassembly.



SLIDING FRONT

Allows for greater convenience when wiring the equipment.





REINFORCED FLUSH-MOUNTED CABINET

Protection and measurement cabinets

Reference	Description	Height x Width x Depth (mm)	Weight (Kg)
APM-0	Blind door.1 locking point	450 X 330 X 210	4,33
APM-0-C	Blind door.3 locking points	450 X 330 X 210	4,53
APM-0-1ML-C	1 round sight glass. 3 locking points	450 X 330 X 210	4,53
AL-APM-0-1ML	1 rectangular sight glass.1 locking point	450 X 330 X 210	3,63
APM-1	Blind door.1 locking point	535 x 520 x 220	7,00
APM-1-C	Blind door.3 locking points	535 X 520 X 220	7,15
APM-1-1ML-C	1 round sight glass. 3 locking points	535 X 520 X 220	7,15
APM-2	Blind door.1 locking point	700 X 520 X 220	10,30
APM-2-C	Blind door.3 locking points	700 X 520 X 220	10,50
APM-2-2ML-C	2 rounds sight glasses. 3 locking points	700 X 520 X 220	10,50





SAFYBOX WATER

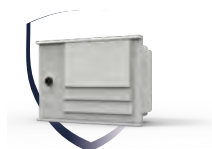
Reference	Description	Height x Width x Depth (mm)	Weight (Kg)
H2O-0-T	Empty cabinet with TRIANGULAR locking system	450 X 330 X 210	4,33
H2O-1-T	Empty cabinet with TRIANGULAR locking system	535 X 520 X 220	7,00
H2O-2-T	Empty cabinet with TRIANGULAR locking system	700 X 520 X 220	10,27
H2O-0-C	Empty cabinet with SQUARE locking system	450 X 330 X 210	4,33
H2O-1-C	Empty cabinet with SQUARE locking system	535 X 520 X 220	7,00
H2O-2-C	Empty cabinet with SQUARE locking systemv	700 X 520 X 220	10,27
H2O-0-A	Empty cabinet with ALLEN screw lock	450 X 330 X 210	4,33
H2O-1-A	Empty cabinet with ALLEN screw lock	535 X 520 X 220	7,00
H2O-0-T-1ML	Empty cabinet 1 peephole with TRIANGULAR locking system	450 X 330 X 210	4,33
H2O-0-A-1ML	Empty cabinet 1 peephole with ALLEN screw locking system	450 X 330 X 210	4,33
H2O-0-EMASESA	Empty cabinet 1 peephole with TRIANGULAR lock EMASESA	450 X 330 X 210	4,33
H2O-2-EMASESA	Empty cabinet 1 peephole with TRIANGULAR lock EMASESA	700 X 520 X 220	10,27

H2O-0-A



H2O-1-T





SAFYBOX WATER

Reference	Description	Height x Width x Depth (mm)	Weight
H2O-AL-T	Empty polyamide cabinet with TRIANGULAR locking system	450 X 300 X 120	2,40
H2O-AL-1ML-T	Empty polyamide cabinet with 1 peephole with TRIANGULAR locking system	450 X 300 X 120	240



H2O-AL-T



H2O-AL-1ML-T

Reference	Description	Height x Width x Depth (mm)	Weight
H2O-0-CANAL-P	Model A-1. Counter of 13 and 20	450 X 330 X 210	4,33



H2O-0-CANAL-P



SAFYBOX WATER

Reference	Description	Height x Width x Depth (mm)	Weight
H2O-2-CANAL-P	Model A-2. Counter 30 and 40	700 X 520 X 300	10,27
ART-75-2CANAL-P	Model A-3. Counter 50 and	1000 X 750 X 300	25,00



H2O-2-CANALP



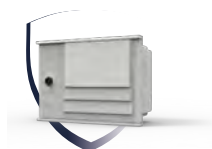
ART-75-2CANAL-P

Reference	Connection	Height x Width x Depth (mm)
H2O-0-CL	Connection 15mm	450 X 330 X 220
H2O-2-CL	Connection 20mm	700 X 570 X 220
ART-55-2-C	Connection 25-30-40mm	500 X 1000X 320
ART-75-2-C	Connection 50 and 65mm	750 x 1000 x 320

ART-55-2C

ART-75-2-C





SAFYBOX GAS

Reference	Description	Height x Width x Depth (mm)	Weight
GAS-OV-C	Empty cabinet for 1 subscriber	350 X 480 X 192	4,33
GAS-OV-1ML-C	Empty cabinet with 1 peephole for 1 subscriber	350 X 480 X 192	4,29
GAS-1	Empty cabinet for 1 subscriber	535 X 520 X 220	7,00
GAS-1-1ML	Empty cabinet with 1 peephole for 1 subscribers	535 X 520 X 220	7,00
GAS-2	Empty cabinet for 2 subscribers	700 X 520 X 220	10,30
GAS-2-2ML	Empty cabinet with 2 peephole for 2 subscribers	700 X 520 X 220	10,30

GAS 1



GAS 2



GAS-OV-C



RAILWAYS



TELECOMMUNICATIONS



GAS



PHOTOVOLTAIC



ELECTRIC



WATER



COMPETITIVE ADVANTAGES

Delivery date

Flexibility

High Manufacturing Capacity (+10.000 pieces per day)

High quality raw material

R&D and Quality Control Department

Technical support

Customisation

Customer loyalty



SAFYBOX

GRUPO URIARTE ENCLOSURES

Garaioltza 162 - 48196 Lezama-Spain

Tel: 944 554 004 web@safybox.com

SPAIN - POLAND - PORTUGAL

