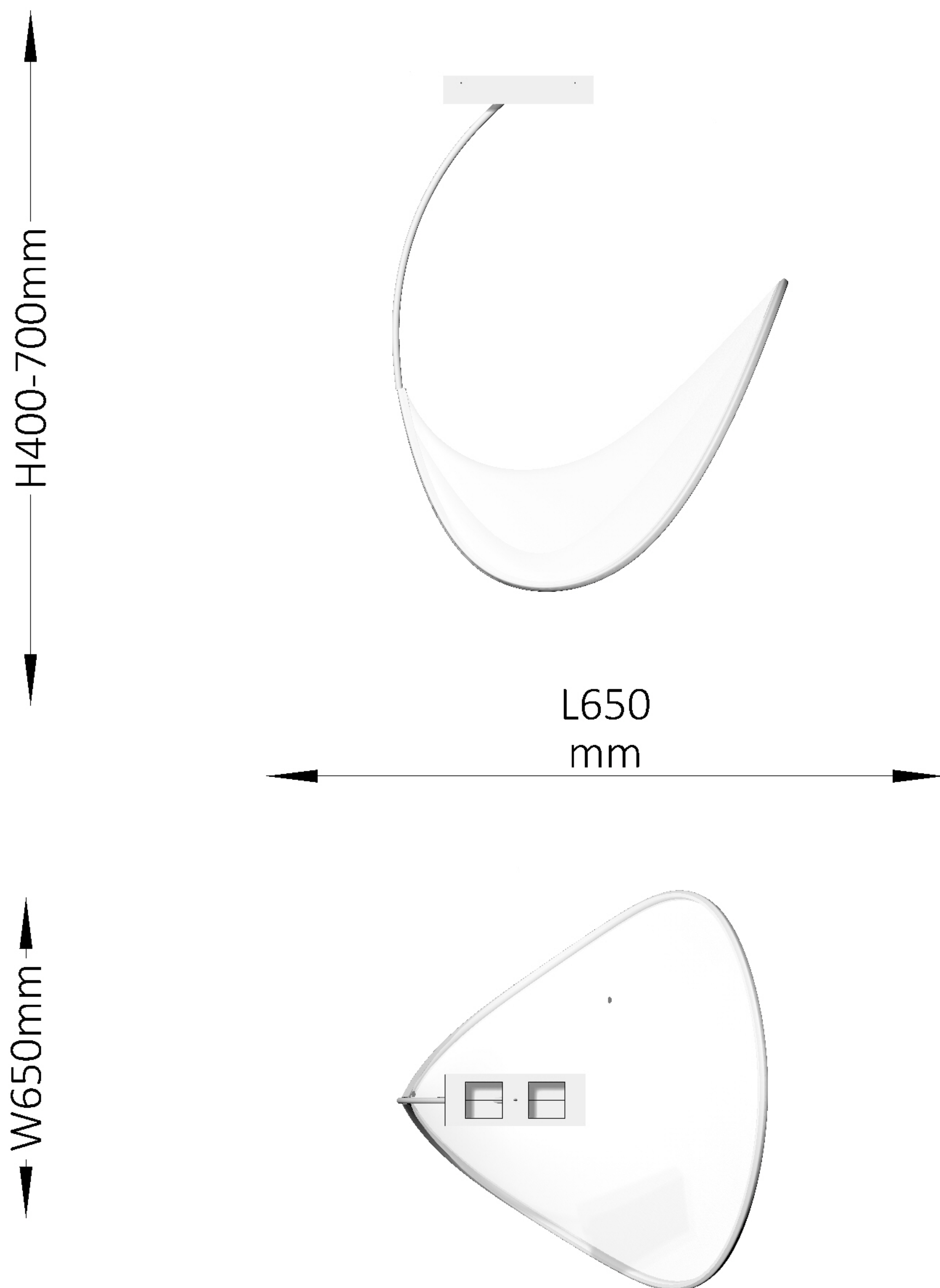


## III.02

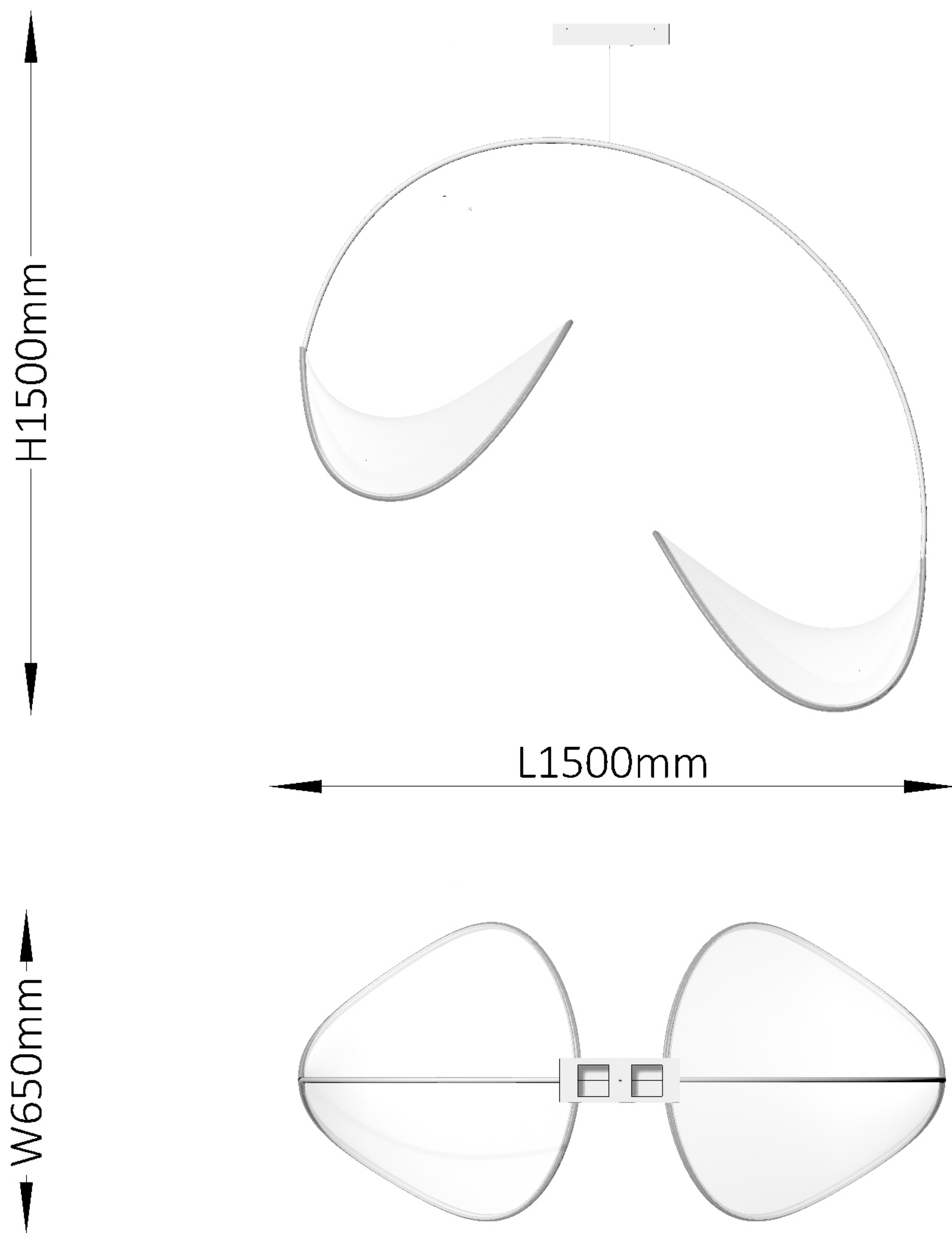
polyester with enamelled copper tricot stretched around  
bended aluminium profiles  
containing the led tape  
2300K/2700K  
95+CRI  
8X240cm length 1000LM/M  
24V meanwell driver  
brass canopy and custom brass tubes  
20kg





## III.02.3/4

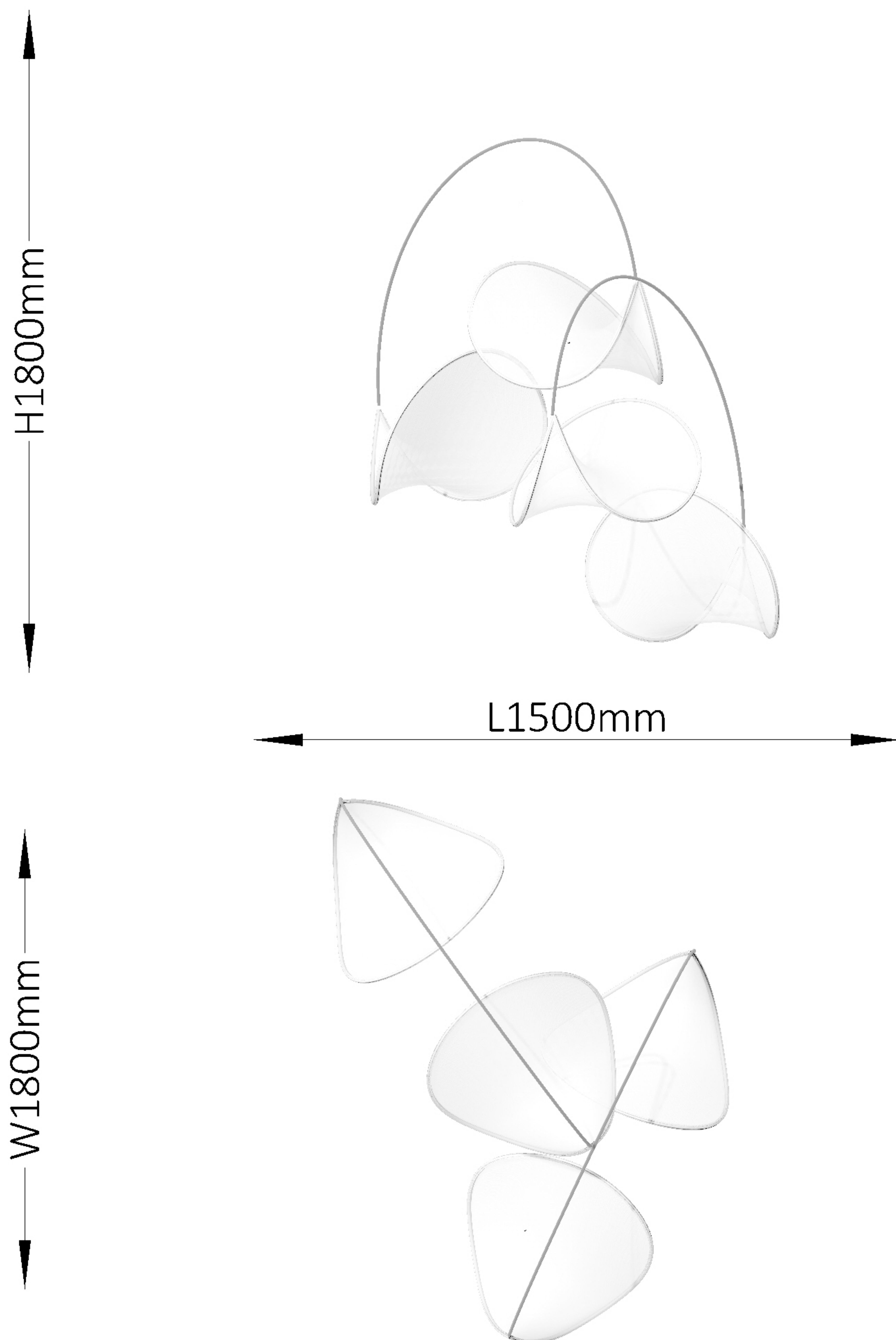
polyester with enamelled copper tricot stretched around  
bended aluminium profiles  
containing the led tape  
2300K/2700K  
95+CRI  
240cm length 1000LM/M  
40 Watt 24V meanwell driver  
brass/white canopy  
brass/black suspending tube  
clear PA coated current carrying steel cable  
adjustable drop length 300cm  
3kg



## III.02.6

polyester with enamelled copper tricot stretched around  
bended aluminium profiles  
containing the led tape  
2300K  
95+CRI  
480cm length 1000LM/M  
90 Watt 24V meanwell driver  
brass canopy  
clear PA coated current carrying steel cable  
adjustable drop length 300cm  
3kg





## III.02.chandelier

polyester with enamelled copper tricot stretched around  
bended aluminium profiles

containing the led tape

2300K

95+CRI

4X240cm length 1000LM/M

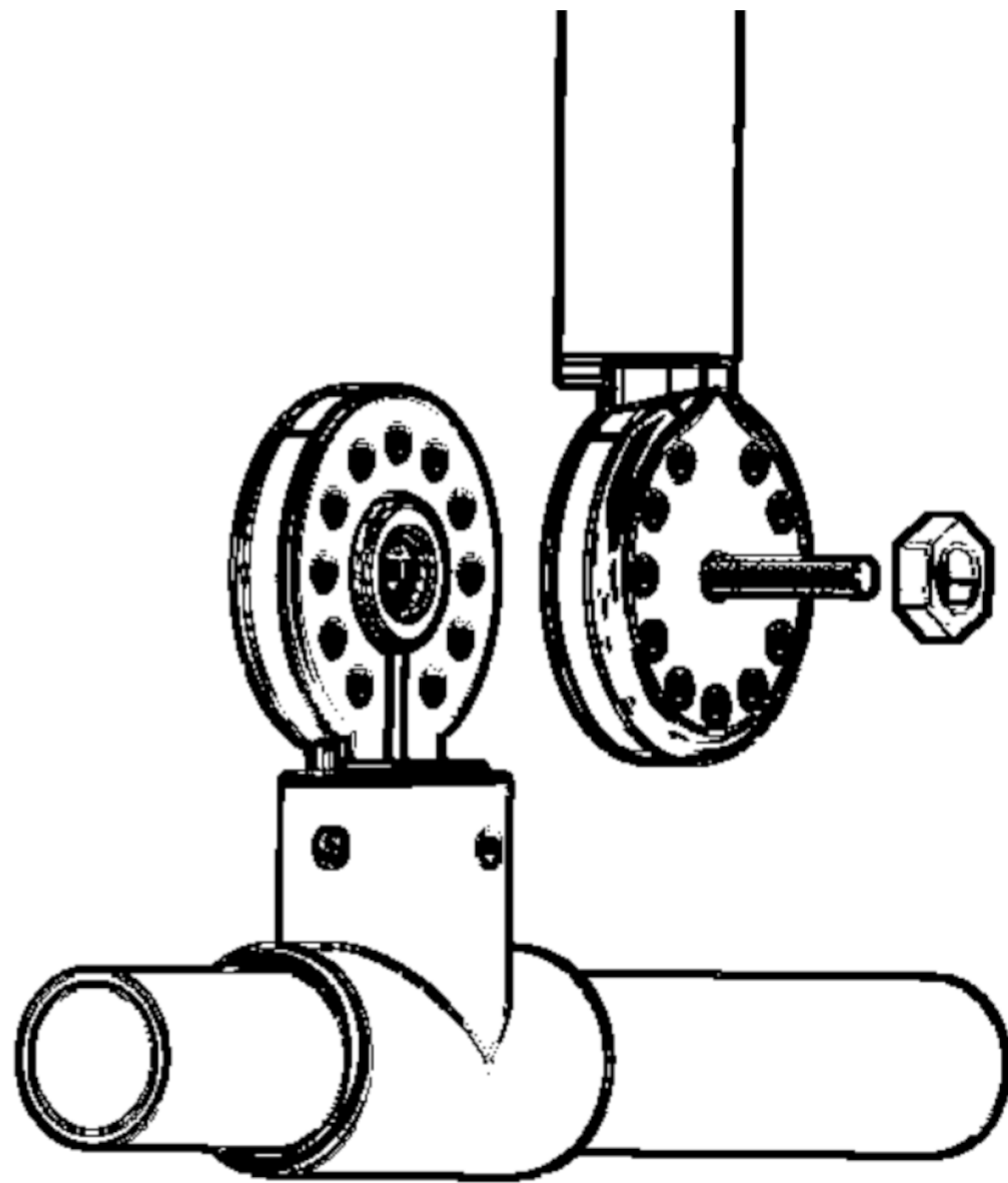
150 Watt 24V meanwell driver

brass canopy and custom tubes

clear PA coated current carrying steel cable

adjustable drop length 300cm

10kg



The tubes and light elements can be interconnected with a current carrying hinge. Customised compositions can be made upon request.