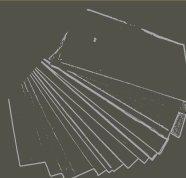
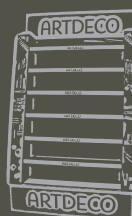


# 20 Product catalogue

Outdoor Advertising  
POS Displays  
Litho, Screen and Digital Printing  
Awnings and TIR Tarpaulines  
Sheet and films from PS, ABS, GPPS, PMMA  
Packing solutions  
Elements for buildings  
Paper Bags

Made in  
Bulgaria

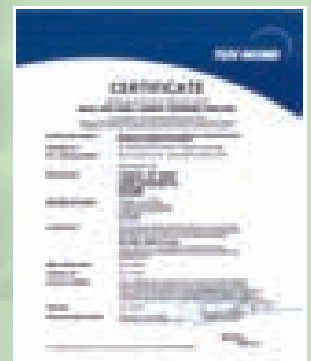
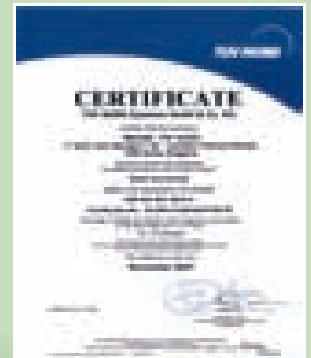
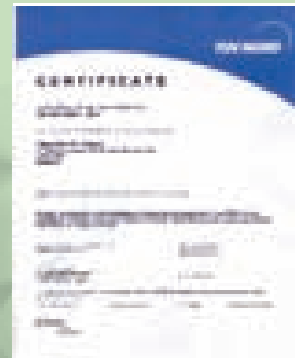


## Our certificates

The Quality Management of our company is committed to the highest level of production quality. This product quality is ensured by operating in accordance with

ISO 9001:2015  
ISO 14001:2015  
ISO 45001:2018  
ISO 50001:2018  
ISO 3834-2:2018  
ISO 1090-1.00955: 2018  
ZA.3.2 and ZA.3.4  
QUALICOAT  
QUALISTEELCOAT

All this standards are implemented  
in both our factories.



## Recycling and Environment

Nearly 28 years ago when we started our production we saw the enormous impact of plastics waste on the environment.

That's why we try to give another life to all our waste.

We developed a program for recycling. We introduced co-extrusion production in our factory and started taking back polystyrene and ABS waste from our customers to produce sheets using this technology.

The virgin material was co-extruded on top and bottom of the sheet with recycled material in the middle of the sheet. This gives our customers cost-effective sheets with high quality surface.

We introduced a new recycling division for sorting, grinding, purification and granulation of industrial plastic waste. At the moment we are recycling and granulating a wide range of plastics: polypropylene, polyethylene, polystyrene, ABS, and we even found a way to put PMMA waste back into use.

Recycling of plastic waste reduces costs for our customers and at the same time decreases the amount of disposed waste. Our ambition is to continue to recycle material as much as possible in order to minimize the environmental impact of the planet.



## About Us

**MOUSE-PS Ltd was founded in 1991.** Since then the company has rapidly grown and developed and only 5 years later, in 1996, it commenced operation on the foreign markets as well.

MOUSE-PS own production and warehouse buildings are located in Bulgaria, **one plant in Sofia with 15,000 m<sup>2</sup> covered area** and second plant in **Botevgrad with 10 200 m<sup>2</sup> covered area.**

We use modern european machines for more than **10 million euro.**

In 2014 we established sales company Sign & Store Solutions GmbH in Gummersbach, Germany.

**Our undisputed advantages that win the trust of our customers are:**

- High quality products
- Fully closed production cycle;
- Short production timing;
- Big versatility of technologies;
- A team of over 350 highly qualified specialists;
- Long established professional experience;
- Competitive/Advantageous prices.

## Our activities

**MOUSE-PS Ltd** offers a wide range of products and services for **outdoor and indoor advertising**, as well as **visual communication, light signs and illuminated letters, desktop publishing, printed matter** and **tailor made non-standard solutions.**

In 2006 MOUSE-PS acquired part of Plastchim AD's assets in Botevgrad, a company with experience in polystyrene and acrylic sheet extrusion of more than 30 years. Following a large-scale modernization, **the plant starts production of polystyrene/PS/, ABS, PMMA, polypropylene /PP/ and SAN sheets.** A year later, the production of polystyrene films begins, as well as of co-extruded sheets. In 2019 we installed new co-extrusion line for **ESD electrically conductive plastic film.**

From 2018, using our modern equipment we started **production of different aluminium and steel parts for buildings**, as facade panels, isolated panels with Rockwall inside, fences and other decorative elements.

## Our products

MOUSE-PS Ltd is famous as advertising products manufacturer, but we also start to operate in different other sectors as:

- sheet extrusion;
- automotive parts;
- elements for building facades;
- isolated building panels;
- plastic recycling;
- powder coating;
- packaging;
- steel fences;
- ESD electro-conductive films, sheets and transport trays.
- welding steel and aluminium industrial parts, using our new CLOOS 7 axis welding robot;
- paper bags;
- textile frames and die-sublimation textile printing.

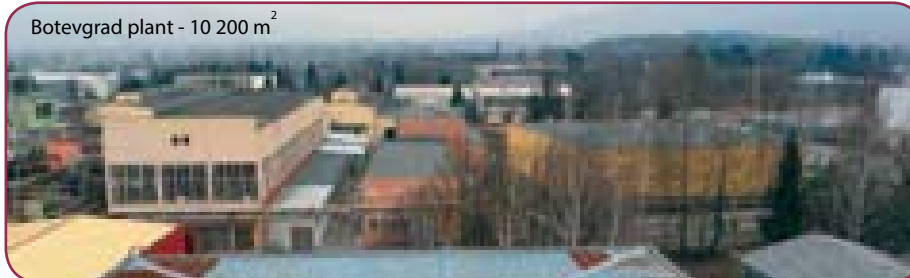
Sofia plant 15 000 m<sup>2</sup>



Sofia administration building



Botevgrad plant - 10 200 m<sup>2</sup>



1



### ILLUMINATED AND FACADE SIGNS

**Plamen Stoykov**  
tel +359 2 4412 555  
mob + 359 888 637043  
mouse-ps@mail.bg

2



### CHANNEL LETTERS

**Veselin Lubomirov**  
tel +359 2 4412 582  
mob +359 888 090059  
v.lubomirov@mouse-ps.com

3



### TOTEMS, PYLONS, BILLBOARDS

**Plamen Stoykov**  
tel +359 2 4412 555  
mob + 359 888 637043  
mouse-ps@mail.bg

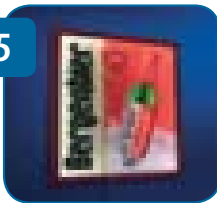
4



### NON ILLUMINATED SIGNS

**Veselin Lubomirov**  
tel +359 2 4412 582  
mob +359 888 090059  
v.lubomirov@mouse-ps.com

5



### CLICK FRAMES, ENGRAVED SIGNS

**Ivo Vladimirov**  
tel +359 2 4412 513  
mob + 359 887 859091  
ivo\_vlad@mouse-ps.com

6



### PLASTIC DISPLAYS

**Rumen Kirov**  
tel +359 2 4412 510  
mob + 359 887 517901  
rumen@mouse-ps.com

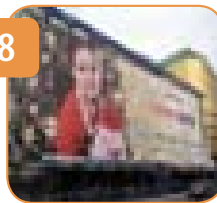
7



### LITHO PRINTED PRODUCTS

**Asparuh Velikov**  
tel +359 2 4412 445  
mob +359 888 701011  
asparuh@mouse-adv.com

8



### DIGITAL PRINTED PRODUCTS

**Asparuh Velikov**  
tel +359 2 4412 445  
mob +359 888 701011  
asparuh@mouse-adv.com

9



### SCREEN PRINTED PRODUCTS

**Rumen Kirov**  
tel +359 2 4412 510  
mob + 359 887 517901  
rumen@mouse-ps.com

10



### RACKS AND POS DISPLAYS

**Rumen Kirov**  
tel +359 2 4412 510  
mob + 359 887 517901  
rumen@mouse-ps.com



11



### EXTRUSION, VACUUM FORMING

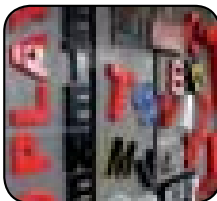
**Plamen Stoykov**  
tel +359 2 4412 555  
mob + 359 888 637043  
mouse-ps@mail.bg

16



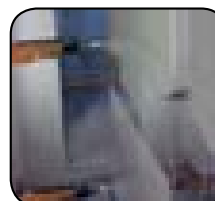
### TEXTILE FRAMES

**Plamen Stoykov**  
tel +359 2 4412 555  
mob + 359 888 637043  
p.stoykov@mouse-ps.com



### MATERIALS FOR SIGNS

**Plamen Stoykov**  
tel +359 2 4412 555  
mob + 359 888 637043  
mouse-ps@mail.bg



### POWDER COATING

**Teodor Mihaylov**  
tel +359 2 4412 544  
mob +359 888 005 966  
tmihaylov@mouse-ps.com

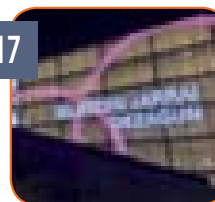
13



### AWNINGS

**Plamen Panayotov**  
tel +359 2 9314220  
mob + 359 888 814430  
vinilart@mail.bg

17



### LED DISPLAYS

**Plamen Stoykov**  
tel +359 2 4412 555  
mob + 359 888 637043  
mouse-ps@mail.bg

**NEW**  
from 2020

14



### TENTS, WAREHOUSES

**Plamen Panayotov**  
tel +359 2 9314220  
mob + 359 888 814430  
vinilart@mail.bg

18



### FACADE ELEMENTS

**Plamen Stoykov**  
tel +359 2 4412 555  
mob + 359 888 637043  
mouse-ps@mail.bg

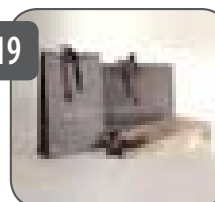
15



### TIR TARPULINS

**Plamen Panayotov**  
tel +359 2 9314220  
mob + 359 888 814430  
vinilart@mail.bg

19



### PAPER BAGS

**Asparuh Velikov**  
tel +359 2 4412 445  
mob +359 888 701011  
asparuh@mouse-adv.com



# TUBE LASER CUTTING



With our new laser cutting machine we can cut steel, aluminium, INOX, brass and copper sheets and profiles.

**Investment in equipment - 722 000 euro**

**Number of employees - 5**

- **BLM LC5, fiber laser 4000 W**
  - sheet cutting size 4000 x 2000 mm
  - tube length - 6500 mm
  - rectangular profiles up to size 100x100 mm
  - oval tubes with diameter - 120 mm
  - maximum profile weight - 13.8 kg/m
  - automatic tube loading



# LASER CUTTING



With our laser cutting machines we can cut and engrave acrylic with thickness up to 20 mm. Laser cutting of thin plastic sheets as PETG and PC is also possible. Making die boards and cutting and engraving wood is our speciality.

**Investment in equipment - 512 000 euro**

**Number of employees - 5**

**List with machines :**

- **SEI LASER MERCURY 609, 400 W** - cutting size 3080 x 2060 mm
- **CUTLITE PENTA PLN3020, 2200 W** - cutting size 3040 x 2020 mm





# METAL WORKING



We can make engineering and production drawings using SolidWorks Premium software and our high qualified team with long experience in the company can produce any kind of steel or aluminium structures. With new installed 7 axis welding robot CLOOS, we can make big series parts with reduced cost and constant quality.

**Investment in equipment - 524 000 euro**

**Number of employees - 19**

## **List with machines:**

- **7 axis welding robot CLOOS** for part size 4000x2000x800 mm
- **MIG-MAG CO2 welding** - 8 teams
- **FRONIUS MAGIC WAVE 2600** - 3 teams
- Many other machines





With our folding and bending machines we produce various aluminium, INOX, steel and galvanised steel panels and folded parts.

**Investment in equipment - 802 000 euro**

**Number of employees - 4**

## List with machines:

- **SCHRÖDER SPB Evolution UD** - up/down panel bender with automatic tool changer, sheet length 4000 mm, steel thickness up to 3.0 mm, bending height 415 mm
- **SCHRÖDER Power Shear Professional** - cutting length 4040 mm, steel thickness up to 6.0 mm
- **Shear LVD HSL 40-6** - cutting length 4000 mm, steel thickness up to 6.0 mm
- **Shear URSVIKEN** - cutting length 2500 mm, steel thickness up to 7.0 mm
- **RAS 74/40** - bending machine, length 4000 mm, steel thickness up to 3.0 mm
- **URSVIKEN 160t** - bending machine, width up to 3100 mm
- **URSVIKEN 100t** - bending machine, width up to 3100 mm
- **MRM-S 3.0 m** - bending rolls, width up to 3000 mm, steel thickness up to 6.0 mm
- **MRM-S 2.0 m** - bending rolls, width up to 2000 mm, steel thickness up to 3.0 mm
- **Many other machines**



# SURFACE PREPARATION



We use our blasting and polishing machines for surface preparation of all parts before powder coating.

**Investment in equipment - 58 000 euro**

**Number of employees - 2**

**List with machines:**

- **TIMESAVERS WDR 1350 grinding machine** - working width 1350 mm
- **TECHNOBLAST belt machine** - working width 1000 mm

# POWDER COATING



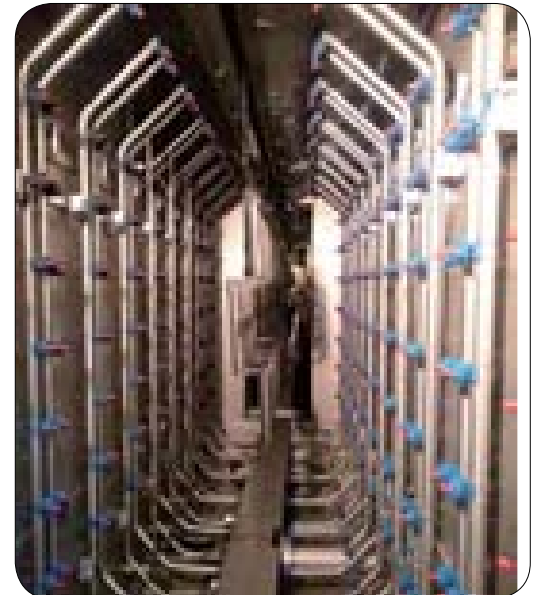
With our modern powder coating line we can cover the highest worldwide standards for painting parts for outdoor use. QUALICOAT and first in Bulgaria QUALISTEELCOAT certificates are guaranteeing highest quality of production.

**Investment in equipment - 2 480 000 euro**

**Number of employees - 26**

**Line is produced by RIPPERT, Germany:**

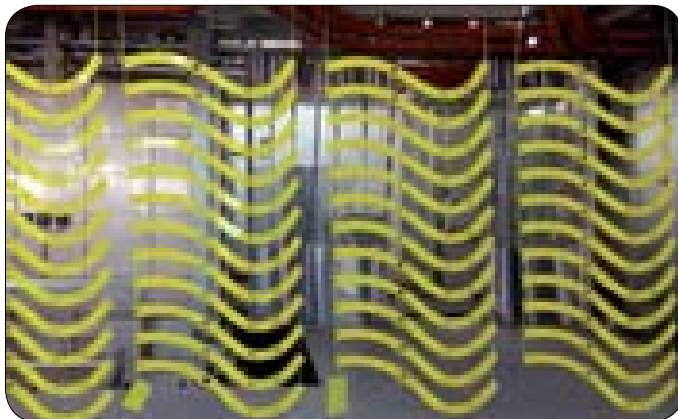
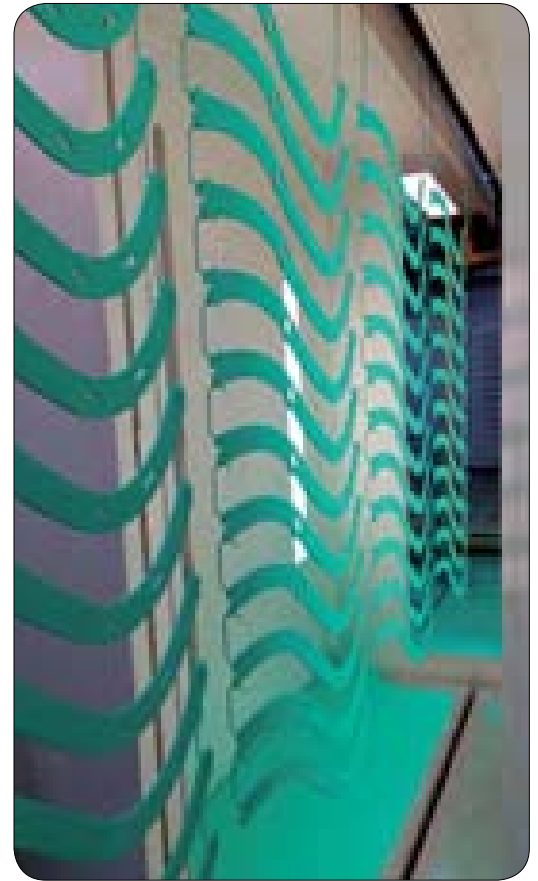
- **Maximum permissible dimensions per part:**
  - **Length** - 4000 mm, - **Height** - 2000 mm, - **Depth** - 600 mm
- **Max. loading capacity** - 350 kg/per bar
- **9 stage Innovative Pretreatment Technology for Steel Parts** with separately alkaline cleaning, acid pickling and nanoscale corrosion resistance layer. Salt spray test corrosion resistance up to 1440 hours.
- **6 stage Innovative Pretreatment Technology for Aluminium Parts** with separately cleaning, acid pickling and nanoscale corrosion resistance layer. Salt spray test corrosion resistance up to 2000 hours.
- **All chemicals from HENKEL**
- **The process is free of hazardous ingredients** and has an excellent environmental and low toxic profile.





# POWDER COATING





# POWDER COATING





# PYROLYSIS OVEN



We use our pyrolysis oven to clean all hooks used for powder coating, but also we use it to remove paint from old or dirty parts - as blow moulding parts, powder coated trays or other partly corroded parts with special shape.

**Investment in equipment - 53 000 euro**

**Number of employees - 2**

**List with machines:**

- **PYROX cleaning oven** - size 1200x1400x1600 mm





# ALUMINIUM PROCESSING



Mouse-PS Ltd. have all needed equipment to process aluminium profiles - as cutting, milling and turning. Our modern Twin spindle DMG turning center was used to produce big series parts.

**Investment in equipment - 98 000 euro**

**Number of employees - 4**

## List with machines:

- **EMMEGI PROMAC** - CNC milling machine
- **EMMEGI 650 SCA/E** - saw blade
- **MECAL SW453** - saw blade with 2 heads
- **EMMEGI COPIA 90-3P** - Milling machine
- **DMG TWIN65** - CNC turning and milling center



# LETTERS PRODUCTION



With our 2 modern letter bending machines we can bend rolls or letter profiles up to 200 mm high. With them we achieve constant precise quality for any production volume.

**Investment in equipment - 143 000 euro**

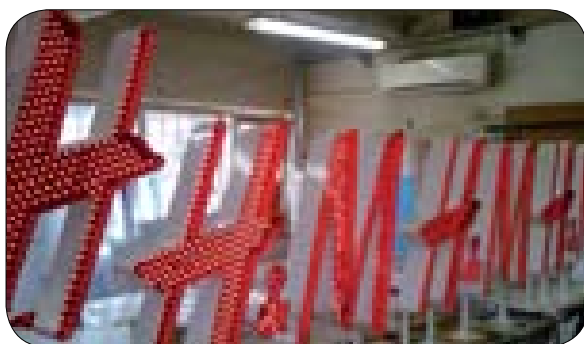
**Number of employees - 4**

**List with machines:**

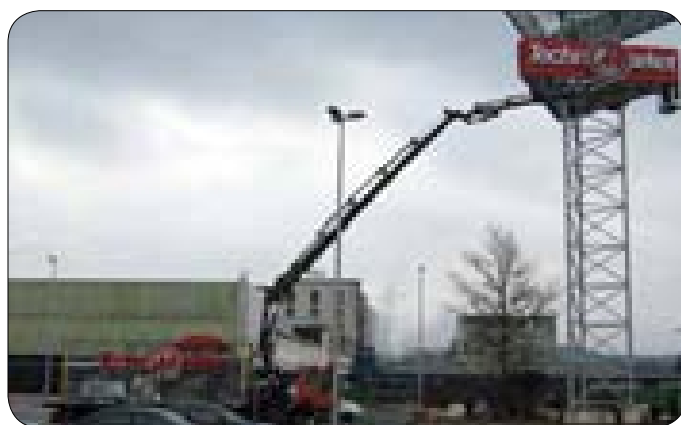
- SDS Super Sign Bender INOX
- SDS Super Channel Letter Bender



# ASSEMBLING



**Investment in equipment - 83 000 euro**  
**Number of employees - 45**





# INSTALLATION



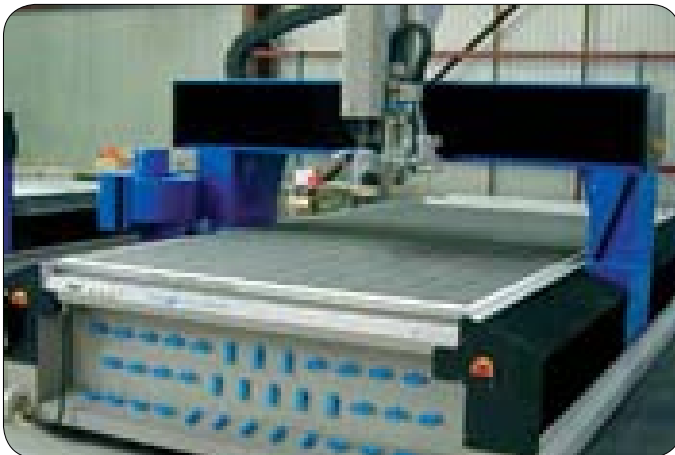
We have own teams for installation of signs and displays, with our own crane and lifting platform. With this final step we can give to our customers warranty and reliability for installed products.

**Investment in equipment - 214 000 euro**

**Number of employees - 9**

## List with machines:

- **Truck SCANIA** with platform 8.9 x 2.4 m and crane HIAB 377-5 + jib, 27 m
- **Truck MERCEDES** with lifting platform 21 m
- **Working platform PMG Genie**, working height 7.1 m
- **Diesel and electrical forklifts**
- **Assembly equipment**



# ROUTER CUTTING



With our 7 modern routers we have high routing capacity and production quality. We use this machines to process aluminium, acrylic, PVC, HIPS, ABS, PETG, PC sheets with different thickness and sizes. We use our 5 axis routers to make tools for vacuumforming and also to cut final parts.

**Investment in equipment - 385 000 euro**

**Number of employees - 9**

## List with machines :

- **MECANUMERIC MECAPLUS 4020** - cutting size 4030x2010 mm
- **MECANUMERIC MF2515** - cutting size 2520x1520 mm
- **MULTICAM 48 PLUS** - cutting size 2600x1380 mm
- **MULTICAM SF** - cutting size 2600x1380 mm
- **MULTICAM 3000** - cutting size 3000x2000 mm
- **GEISS 5 axis** - cutting size 2000x1000x600 mm
- **ALBERTI 6 axis** - cutting size 3000x1500x600 mm



# PLASTIC PROCESSING



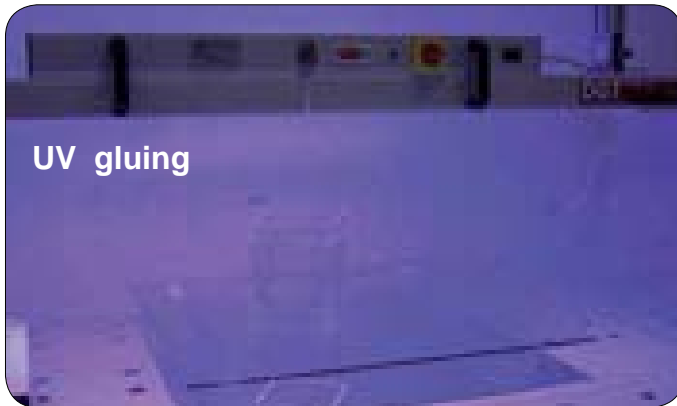
Our speciality is to produce complicated plastic parts and displays, using all possible inhouse technologies for processing plastic sheets and films.

**Investment in equipment - 194 000 euro**

**Number of employees - 11**

## List with machines :

- **CODEMA Alfa** - diamond polishing machine
- **CODEMA** - heat bending machine with 4 moving quartz heaters 3.0 m
- **CODEMA** - heat bending machine with 4 moving wire heaters 2.0 m
- **PERFECTA SEYPA 168** - guillotine
- **OMLA 2.0 m** - knife
- **ALTENDORF 2 pcs** - saw blade cutting machine
- **EUROMAC** - saw blade cutting machine
- **I-concept IC Speedmatic** - automatic bending machine
- **EURACRYL ABP 310** - 3100 mm diamond polishing machine
- **EURACRYL V2-M 3** - diamond polishing machine



# PLASTIC PROCESSING







# SHEET EXTRUSION



In 2006 we started to produce plastic sheets and films from PMMA, HIPS, GPPS and ABS. We use this materials for our own production, but as well for external customers. Our main advantages are possibility to produce small quantity sheets or films in different sizes, thickness or colors and attractive prices. In 2019 we started to produce also electroconductive films and sheets, used in electronic and mining industries for packaging or transport trays.

**Investment in equipment - 1 327 000 euro**

**Number of employees - 21**

## List with machines:

- **Sheet extrusion line RAIFENHAUSER**, for PMMA, ABS and PS sheets, working width 2050 mm, sheet thickness 1.2 - 11.4 mm.
- **Co-extrusion sheet line BREYER**, for PS sheets, working width 1250 mm, sheet thickness 1.0 - 4.4 mm.
- **Co-extrusion film line SEIDE**, for HIPS and ABS films in width up to 820 mm and thickness in range 0.2-2.0 mm.
- **PS foil extrusion line EKK**, working width 1250 mm, thickness 0.20 - 0.90 mm
- **Saw blade sheet cutting machine.**



# VACUUM FORMING



We have 3 sheet and 3 film vacuum forming machines, which we use to produce different industrial or advertising parts, such as transport trays, packaging products, printed logos and many other products. With our heating oven we can bend cast acrylic sheets with thickness up to 30 mm.

**Investment in equipment - 248 000 euro**

**Number of employees - 6**

## List with machines :

- **Sheet vacuum forming machine HANWOOD 3020,**  
forming area 3000x2000x600 mm, top and bottom ceramic heaters.
- **Sheet vacuum forming machine KIEFEL 2212,**  
forming area 2200x1200x400 mm, top and bottom ceramic heaters
- **Sheet vacuum forming machine KIEFEL 100/66,**  
forming area 1000x660x200 mm, top quartz heaters.
- **Film automatic vacuum forming and cutting machines ILLIG RDKP52,**  
forming area 500x350x100 mm - 2 pcs.
- **Film automatic vacuum forming and cutting machine KIEFEL 72,**  
forming area 700x500x100 mm.
- **Heating oven BURKLE,** size 1840x1400 mm.





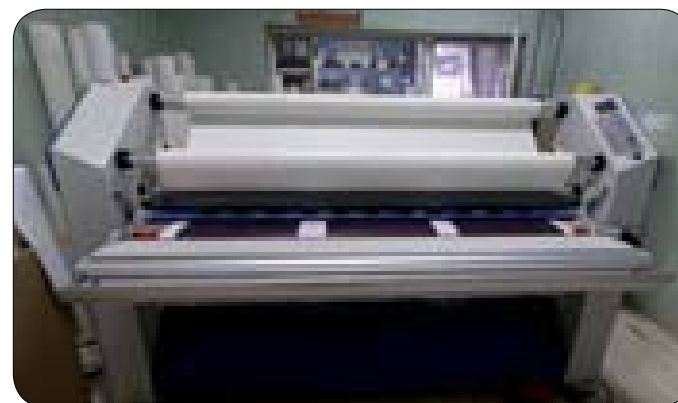
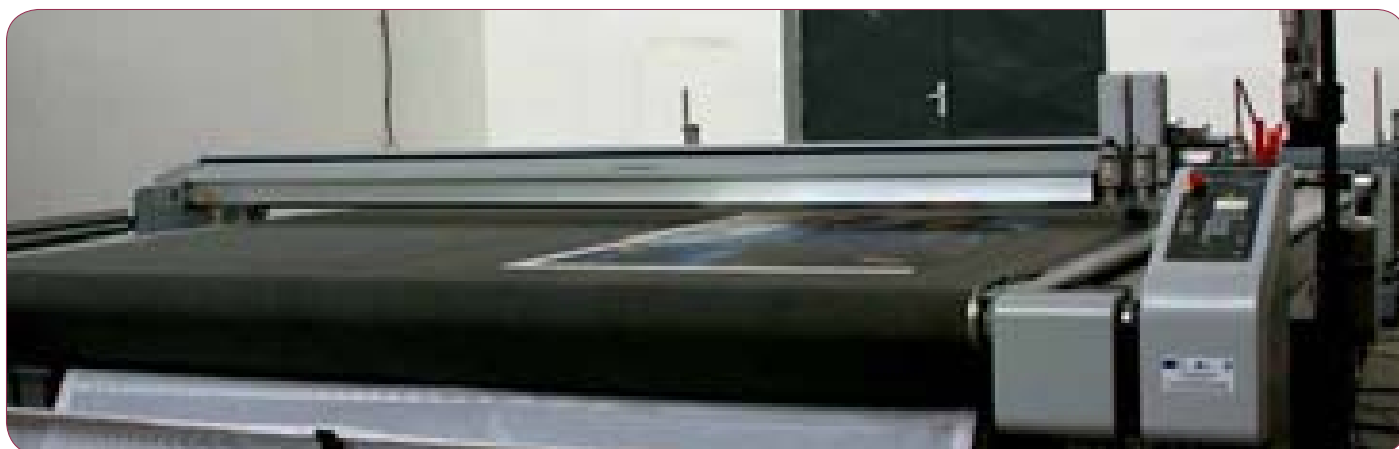
Our digital printing department is equipped with modern machines and they give us opportunity to print on wide variety of substrates, such as self-adhesive vinyl, banners, textile, backlit or rigid materials as PVC, Dibond, PMMA, HIPS and others.

**Investment in equipment - 857 000 euro**

**Number of employees - 15**

**List with machines :**

- **HP XL1500 5m** - 5.0 meter 8c roll to roll solvent printer.
- **HP Latex 3100** - 3.2 meter 6c roll to roll latex printer - 2 pcs.
- **HP Latex 375** - 1.65 meter 6c roll to roll latex printer - 2 pcs.
- **OCE ARIZONA 360XT** - 3x2.5 m 4c+White flatbed UV printer.
- **OCE ARIZONA 350XT** - 3x2.5 m 4c+White flatbed UV printer - 2 pcs.
- **DURST RHOTEX 320** - 3.2 m.
- **Calander TRANSMATIC** - 3.2 m.





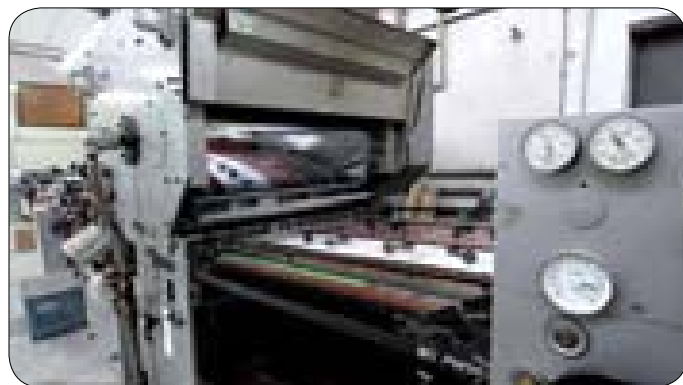
We have big capacity for finishing of digital printed products, which is based on wide range of finishing equipment as ZUND, Kongsberg, saw cutting machines, laminators and etc.

**Investment in equipment - 430 000 euro**

**Number of employees - 7**

**List with machines :**

- **ZUND G3 3XL** - 3.2x3.5 meter finishing center - 2 pcs.
- **MIMAKI** 1.6 meter finishing center
- **KONGSBERG XL44** 3.1x2.1 meter finishing center
- **SEAL 3300SW** - 3.2 meter liquid laminator
- **SEAL 62PRO** - 1.6 meter hot and cold film laminator
- **SUMMA 160D** - 1.6 meter pvc film cutter
- **EXCALIBUR 5000** - meter finishing center







With our three 4 colors litho printing machines Heidelberg we cover printing sizes 1000x700 mm, 700x500 mm and 500x350 mm. This give us flexibility to print optimally products with different sizes.

**Investment in equipment - 792 000 euro**

**Number of employees - 53**

**List with machines:**

- **HEIDELBERG SM102 VP+L** - 102x72 cm 4c+varnish offset printing
- **HEIDELBERG SM74 4H** - 74x52 cm 4c offset printing
- **HEIDELBERG SM52 ANICOLOR** - 52x34 cm 4c offset printing
- **HEIDELBERG GTO46** - 45x32 cm offset printing + numbering
- **NEBIOLO PERFECTA 102** - 1c offset UV coating machine



# LITHO PRINTING



We use modern thermal CTPs to make our plates for printing. For printing small orders we use our Konica Minolta digital printing machine.

**Investment in prepress equipment - 118 000 euro**

**Number of employees - 4**

**List with machines:**

- **KONICA MINOLTA C1100** - max sheet size 330x487 mm .
- **HEIDELBERG Topsetter P102 .**
- **HEIDELBERG Suprasetter P105.**





## List with machines:

- **STAHL KD56 and KD66** - folding
- **POLAR 92ED, POLAR 137ED, POLAR 76** - paper cutting
- **HEIDELBERG CYLINDER** - die-cutting
- **AUTO-DUX** - die-cutting
- **UNION MACHINE COMPANY LTD** - die-cutting 100x70 and 70x50 cm
- **HORIZON BQ440** - hot-melt binding
- **POLYGRAPH MOD 822/2-18** - gathering machine
- **HARRIS SP455** - saddle stitching machine
- **HEIDELBERG PROSETTER** - saddle stitching machine
- **Many other machines**



# PAPER BAGS



We are producing luxury paper bags using different paper types - coated or kraft. We can add special effects as hot-goil stamping and UV spot varnishing, matt or gloss lamination and different model handles.

**Investment in equipment - 118 000 euro**

**Number of employees - 52**

## **List with machines:**

- **PERFECTA SEYPA 132** - paper cutting
- **HEIDELBERG SBB CYLINDER** - die-cutting - 2 pcs
- **KBA CONDOR** - die-cutting
- **BILLHOFER CKM 1200** - laminating machine
- **NEBIOLO PERFECTA 102** - UV partial coating machine
- **CMC WEGA, CMC SIRIUS** - gluing machine
- **CMC ANTLIA 4 pcs** - gluing machine
- **Many other machines**







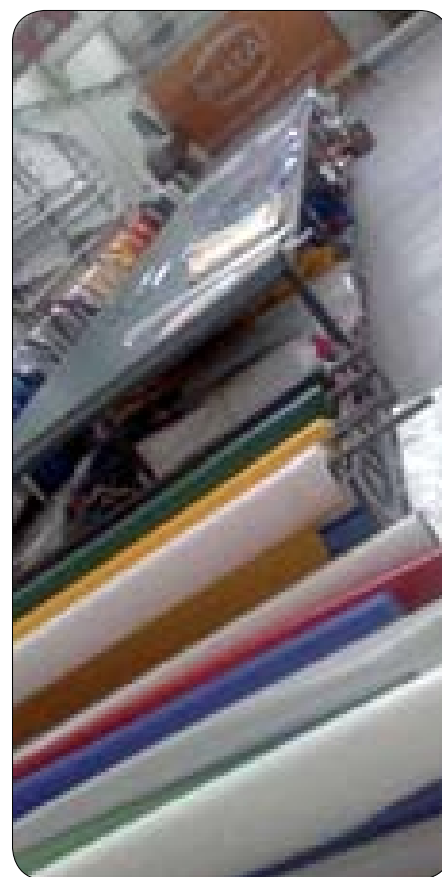
We still keep inhouse screenprinting technology, which helps us to print acrylic, leather, laminated boards for furniture and metal parts. Using screenprinting to print on the inner side of clear acrylic gives long life time to our vacuumformed light signs. We use UV, solvent and 2 component inks.

**Investment in equipment - 262 000 euro**

**Number of employees - 5**

**List with machines :**

- **ARGON SPEEDOMATRIX** - printing size 2150x1630 mm
- **ARGON MAGNUM** - printing size 2740x1370 mm
- **ARGON UNOSTAR III** - printing size 1500x1020 mm
- **ARGON UNOSTAR II** - printing size 1250x850 mm
- **ARGON SPEEDOMAT** - printing size 700x500 mm
- **UV, HOT AND COLD AIR DRYERS**





We have 4 high frequency welding machines, which we use to produce big tensile structures, truck tarpaulins, storage covers, tennis court covers or tents.

**Investment in equipment - 178 000 euro**

**Number of employees - 32**

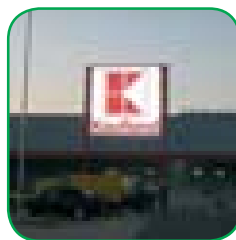
**List with machines:**

- **High frequency welding machine GEAF SON**
- **High frequency welding machine GEAF ST**
- **Automatic high frequency welding machine** with 16 m long table  
FORSSTROM TDW 200-1000
- **Hot air welding machine LEISTER**

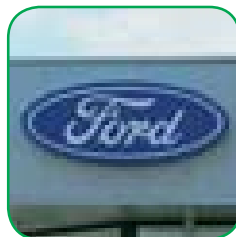
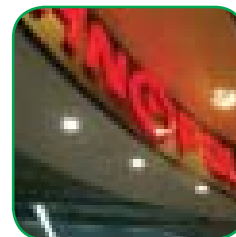
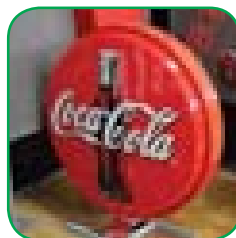
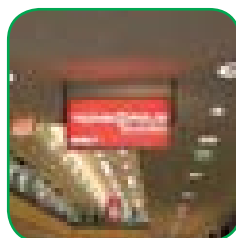


**p. 56-59**

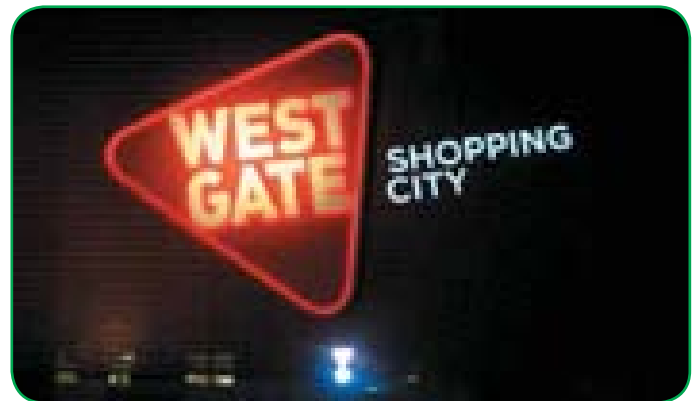
1.1. BIG SIGNS

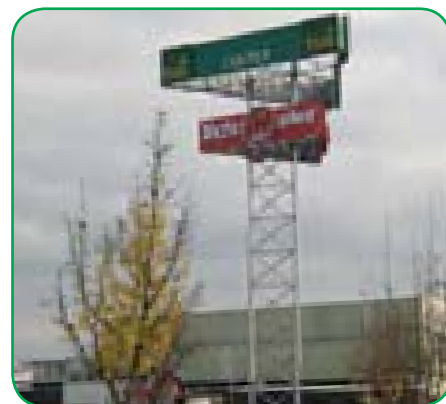
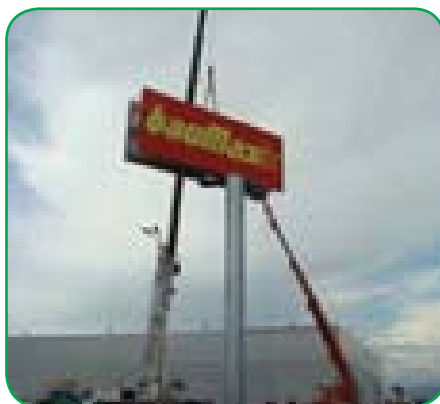
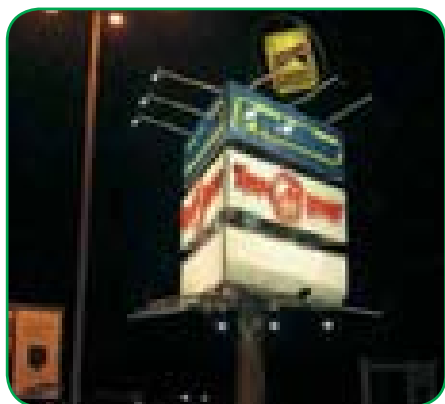
**p. 68-69**1.6. SIGNS WITH  
FACE FROM  
VINYL**p. 77**1.11. LIGHTING  
EDGES**p. 60-61**

1.2. ROOF SIGNS

**p. 70-71**1.7. SIGNS WITH  
FLAT FACE  
FROM ACRYLIC**p. 78-79**1.12. SPECIAL  
PROJECTS**p. 62-63**1.3. SIGNS WITH  
CUTTED  
FACE AND  
INDIVIDUAL  
LETTERS**p. 72-73**1.8. SIGNS WITH  
CURVED FACE  
FROM ACRYLIC**p. 64-66**1.4. FACADE  
SIGNS**p. 74-75**1.9. SIGNS WITH  
VACUUMFORMED  
ACRYLIC FACE**p. 67**1.5. PROJECTING  
SIGNS**p. 76**1.10. INTERNAL  
ILLUMINATED  
SIGNS







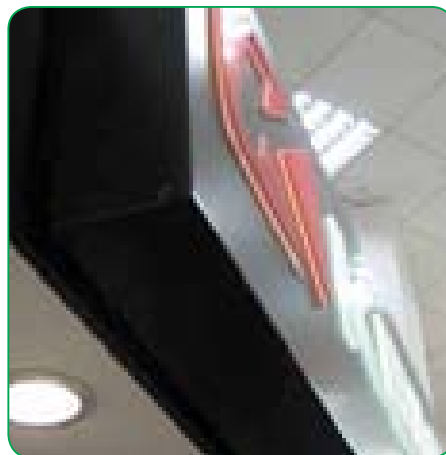
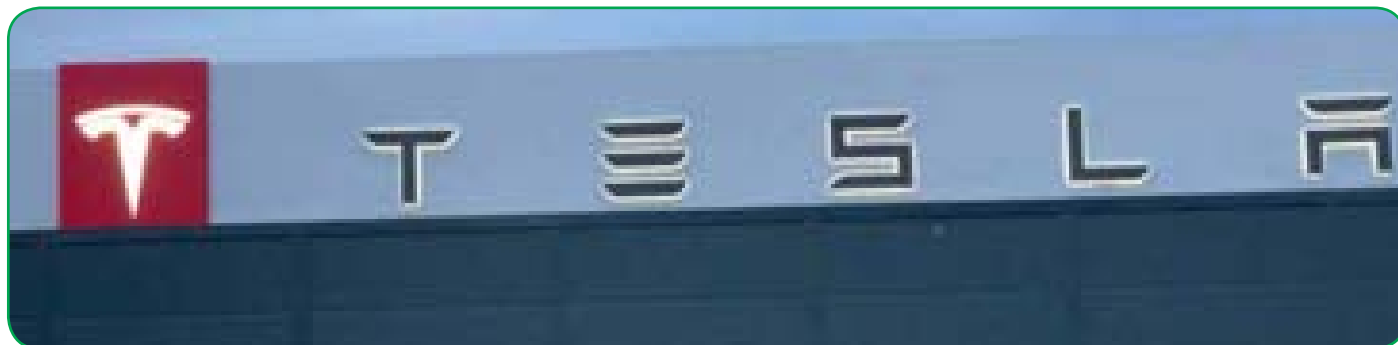










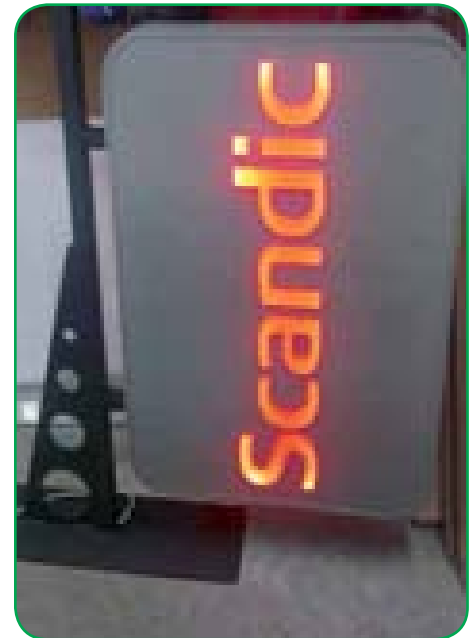










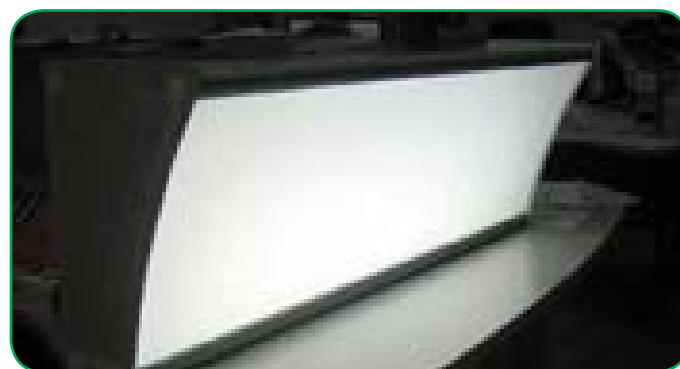








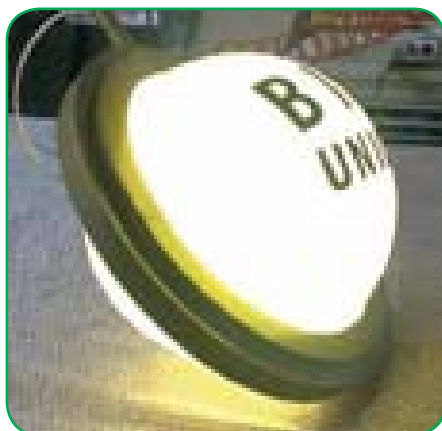


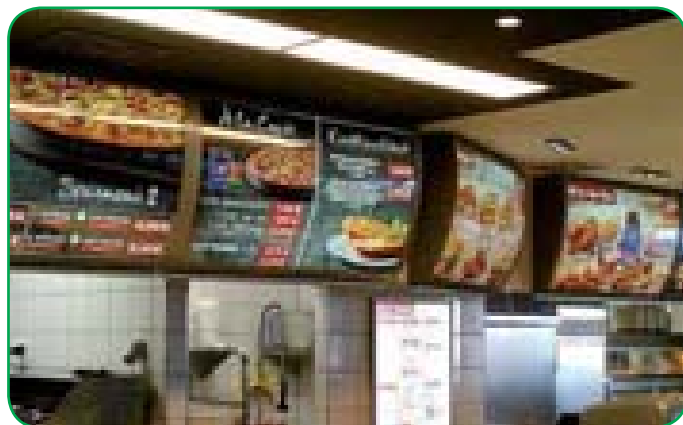
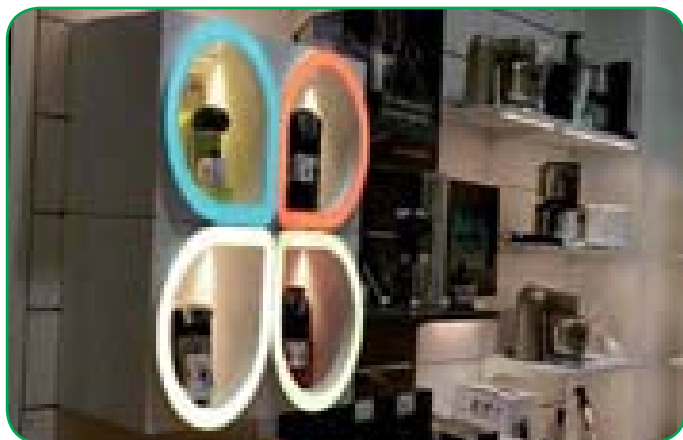










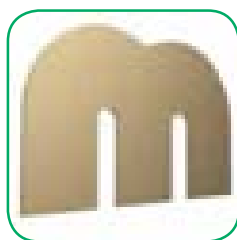








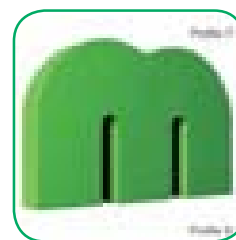


**p. 82-83**

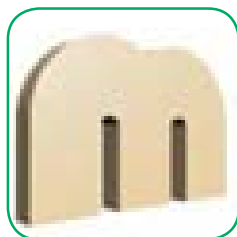
2.1. NON  
ILLUMINATED  
LETTERS WITH  
FLAT FACE PR.0

**p. 90**

2.7. LETTERS  
WITH  
ILLUMINATED  
FACE AND L  
PROFILE TO FIX  
FACE PR.4

**p. 98**

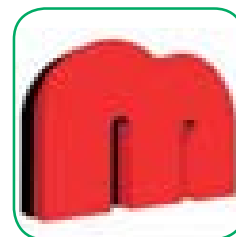
2.12. ILLUMINATED  
LETTERS WITH FACE  
AND RETURN FROM  
ACRYLIC PR.7 AND  
PR.8

**p. 84-85**

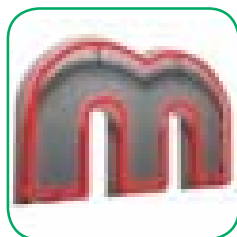
2.2. NON  
ILLUMINATED  
LETTERS WITH  
RETURN PR.01

**p. 91**

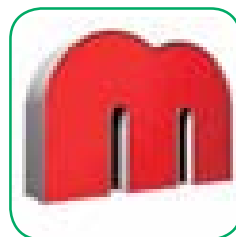
2.8. BIG LETTERS  
WITH ILLUMI-  
NATED FACE  
AND INTERNAL  
CONSTRUCTION  
PR.4.1.

**p. 99**

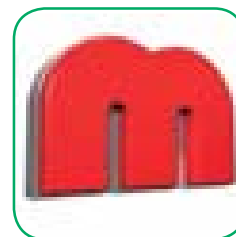
2.13. ILLUMINATED  
LETTERS WITH FACE  
AND RETURN FROM  
ACRYLIC AND BACK  
WELDED LETTER  
BODY PR.9

**p. 86**

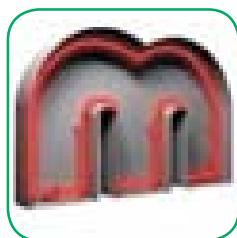
2.3. NEON TUBES  
ON PLATE PR.2.1

**p. 92 - 93**

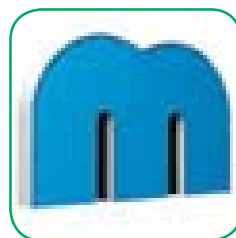
2.9. LETTERS  
WITH  
ILLUMINATED  
FACE AND PVC  
PROFILE TO FIX  
FACE PR.5

**p. 100**

2.14. VACUUM  
FORMED  
LETTERS PR.10  
AND OTHER  
LETTERS

**p. 87**

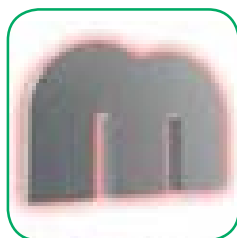
2.4.  
ILLUMINATED  
LETTERS WITH  
NEON AND  
RETURN PR.2.2

**p. 94 - 95**

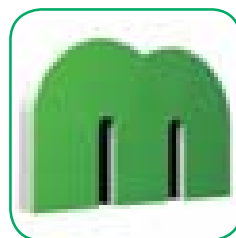
2.10. LETTERS  
WITH ILLUMI-  
NATED FACE  
AND ALURAPID  
PROFILE PR.5.1.

**p. 101**

2.15.  
CONSTRUCTIONS  
BEHIND LETTERS

**p. 88-89**

2.5. "HALLO"  
ILLUMINATED  
LETTERS PR.3

**p. 96 - 97**

2.11. LETTERS  
WITH  
ILLUMINATED  
FACE AND NO  
EDGE ON FACE  
PR.5.2.

**p. 102 - 103**

2.16. LETTERS  
PR.12 from solid  
acrylic

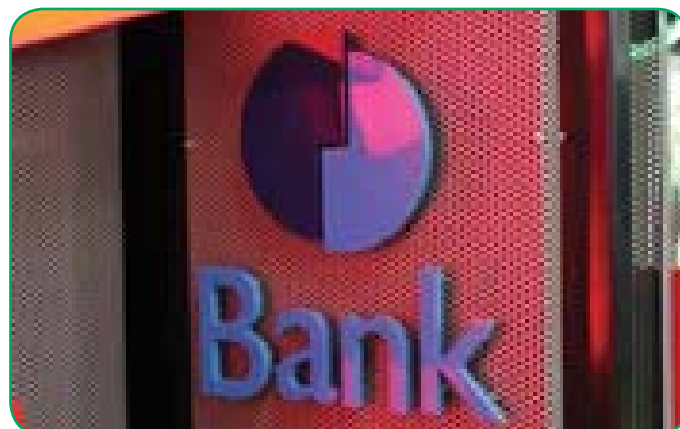
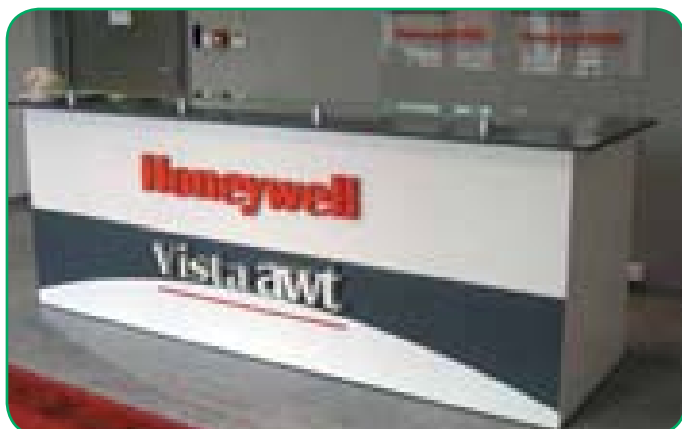
## Non illuminated letters with flat face Pr.0



One piece channelletter  
Material - PVC, Acrylic, Aluminum, PC/PC, brass  
Mounting options - double layer, surface, wet/dry studio





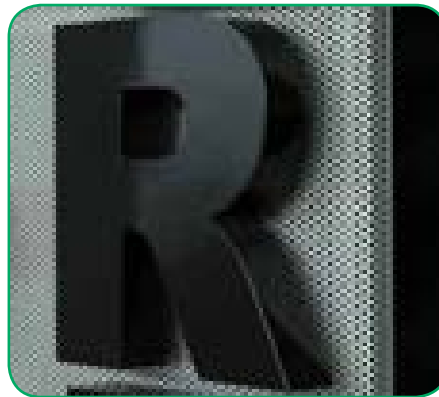


Non illuminated letters with return Pr.01



Two pieces channel letter  
 Material - PVC, Acrylic, Aluminum, HDPE, brass  
 Mounting options - spliced, welded studs, L profile





Neon tubes on plate Pr.2.1



Open neon tube mounted on plate from PVC, Acrylic, Aluminum, POK, brass.

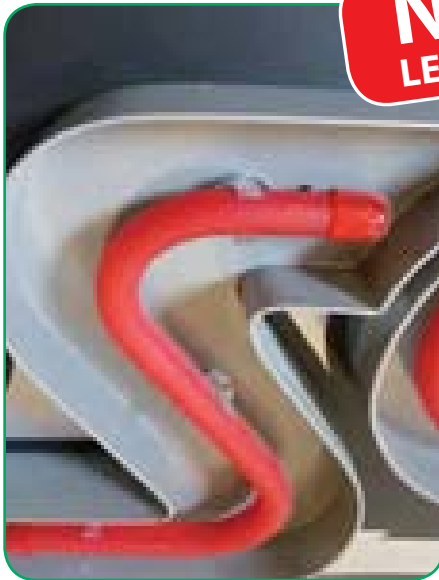
**NEW**  
LED NEON



## Illuminated letters with neon and return Pr.2.2



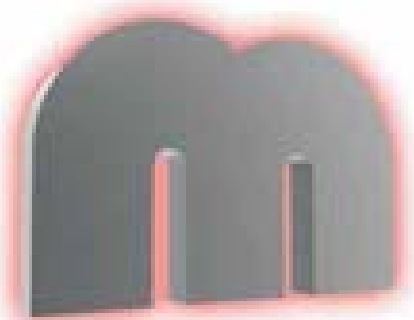
Two pieces of aluminum with flange border at the return for open neon illumination.  
Material - Aluminum, PVC, Brass.



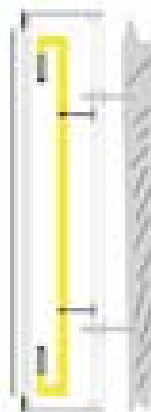
**NEW**  
LED NEON



"Hallo" illuminated letters Pr.3



Two pieces channelletter with welded face and return,  
back plate from acrylic for back mount or LEDs illumination.  
Material - Aluminium, PVC, brass.  
Painting inside white matt outside in any color.

"Hallo" illuminated letters  
with light edge on face Pr.3.1

Two pieces channelletter with welded face and return,  
back plate from acrylic for back mount or LEDs illumination.  
Material - Aluminium, PVC, brass.  
Options with lighted face or edge in same or different color.  
Painting inside white matt outside in any color.





Letters with illuminated face  
and L profile to fix face Pr.4



Two pieces channelletter with welded back and return.  
Face front angle closed with L profile.  
Illumination with neon or LEDs. - Material - Aluminum, PVC, brass.  
Painting inside white matt, outside in any color.





Big letters with illuminated face and internal construction Pr.4.1.



Two pieces channelletter with welded internal metal construction, back and return from metal sheet.  
Face from acrylic or lacated vinyl covered with L profile.  
Illumination with neon, LEDs or fluorescent tubes.  
Material - Aluminum, PVC. Painting inside white matt, outside in any color.



Letters with illuminated face  
and PVC profile to fix face Pr.5

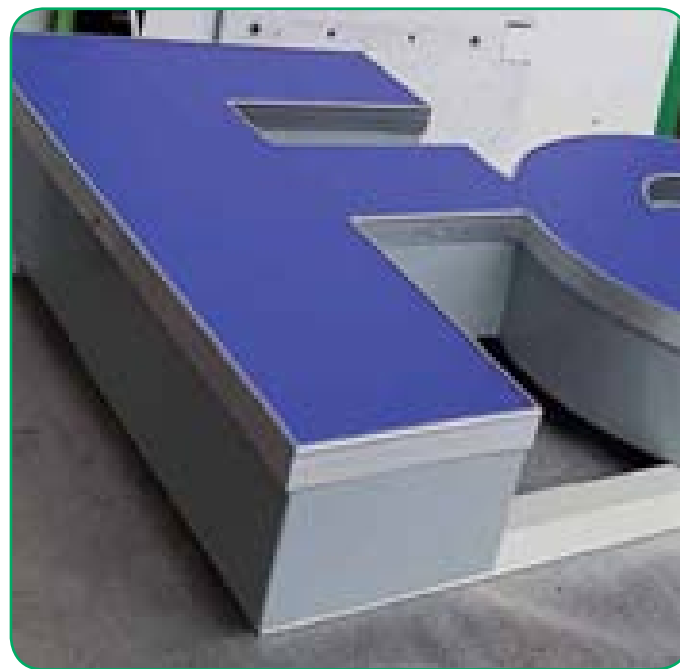


*PVC profile*



Two pieces channelletter with welded back and return,  
face from acrylic closed with special form free PVC profile.  
Illumination with tubes of LEDs.

Material : Aluminum, PVC, Painting inside white matt, outside in any color





Letters with illuminated face and Aluminium profile to fix face Pr.5 al.

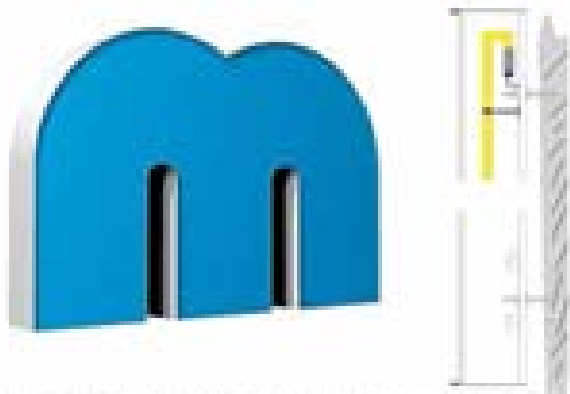


This solution is used when letters need to have same color of return and F profile.

*Aluminium profile*



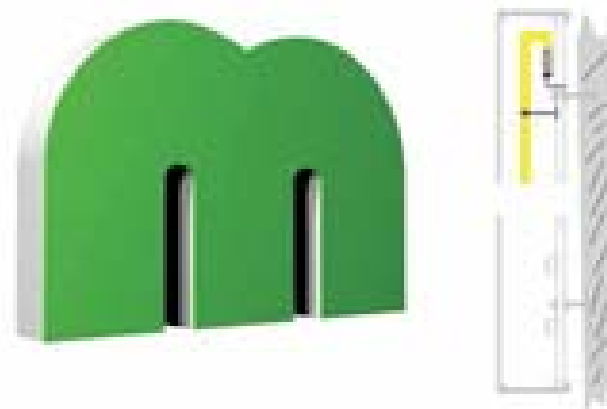
Letters with illuminated face  
and ALURAPID profile Pr.5.1.



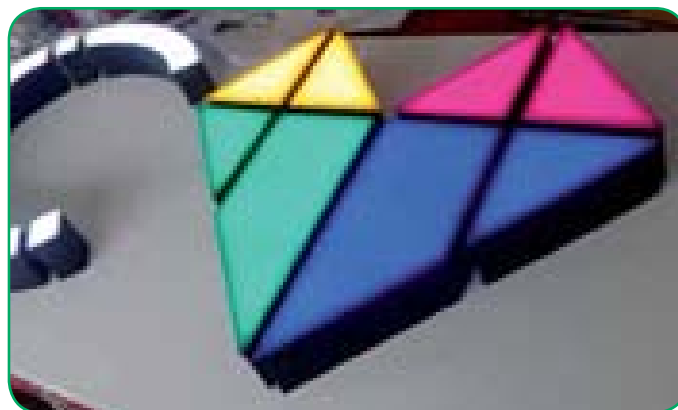
Two pieces: outer/inner with face from acrylic (stained with special ALURAPID profile and back from PVC) 15mm.  
Illumination with resin or LEDs. (Return size 90, 110 or 140 mm).  
ALURAPID standard colors available.



Letters with illuminated face and no edge on face Pr.5.2.

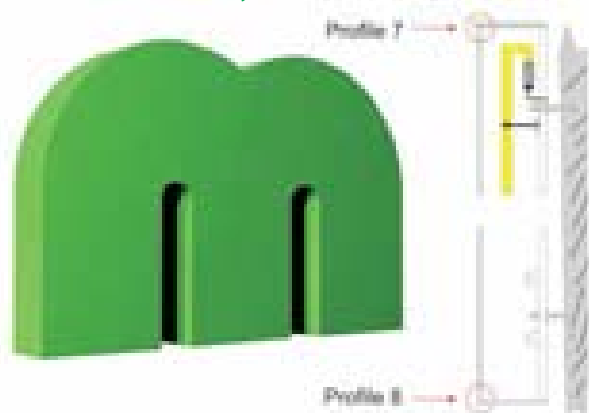


Two piece channel letter with extruded face and return, face from acrylic.  
NO VISIBLE EDGE on face and return. Illumination with neon or LEDs.  
Material - Aluminum, PVC, Painting inside white matt, outside in any color.

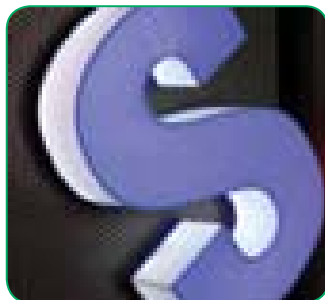




Illuminated letters with face  
and return from acrylic Pr.7 and Pr.8

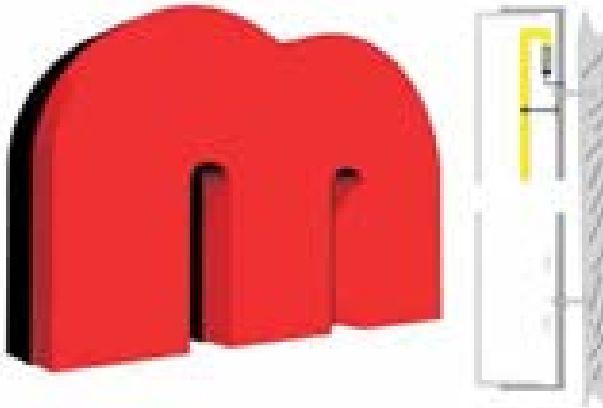


Two-piece channel letter, face and return from acrylic, back PVC hard foam.  
Illumination with rows of LEDs.





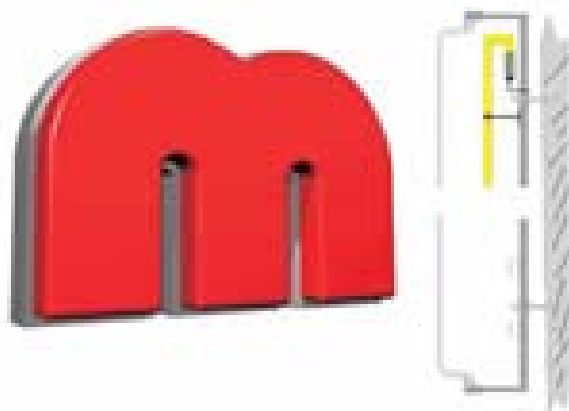
Illuminated letters with face and return from acrylic and back welded letter body Pr.9



Two-piece illuminated: face and return from acrylic with welded back and return from metal.  
Illumination with neon or LED's.  
Painting inside white mesh available in any color

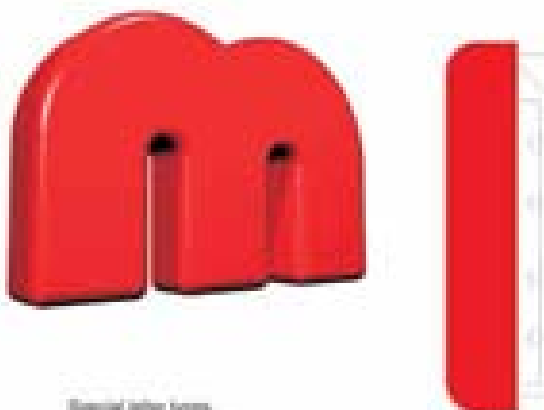


Vacuum formed letters Pr.10



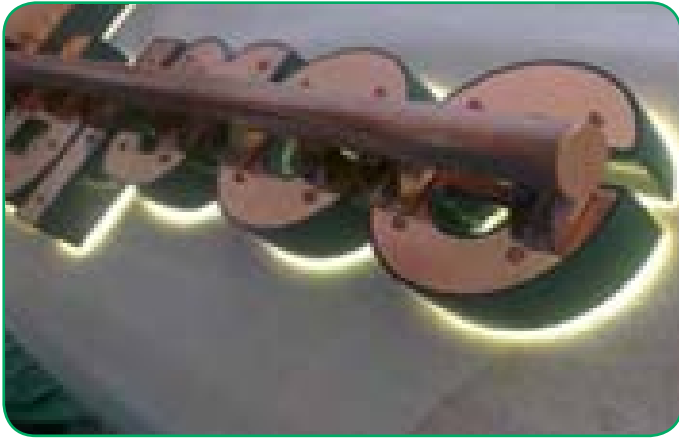
Vacuum formed letter face from profile

Other letters

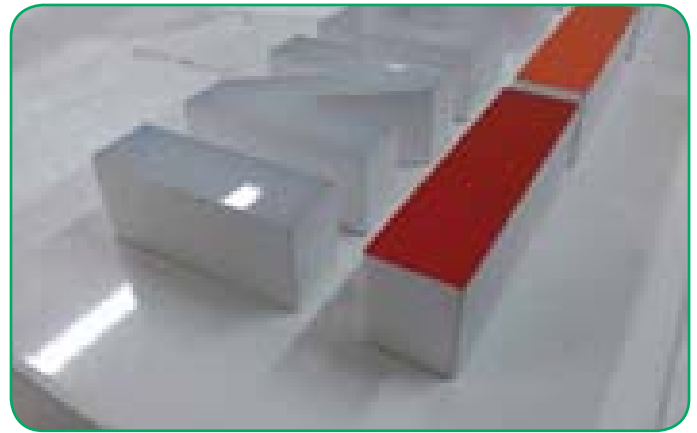
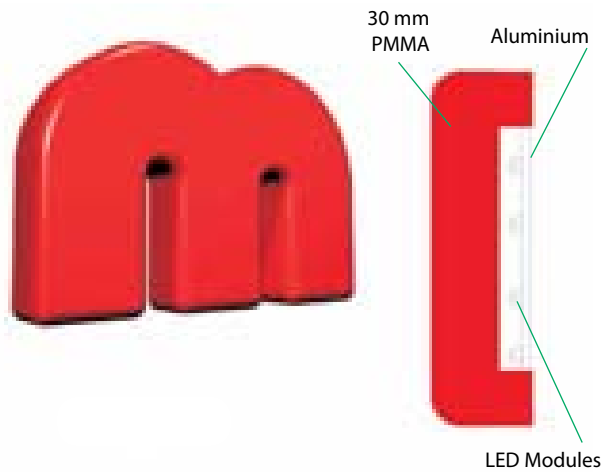


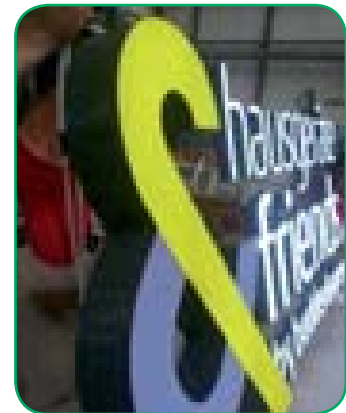
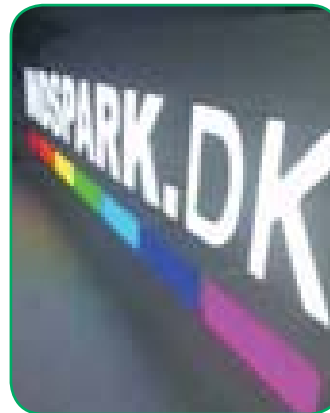
Special letter types



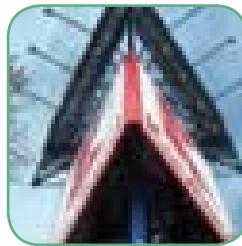


Letters from solid acrylic Pr.12



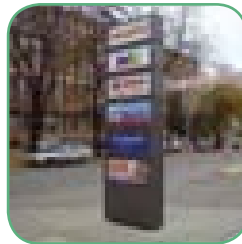






***p. 106-107***

***3.1. PYLON SIGNS***



***p. 108-110***

***3.2. TOTEM SIGNS***



***p. 111-113***

***3.3. PETROL STATIONS***



***p. 114-115***

***3.4. BILLBOARDS***







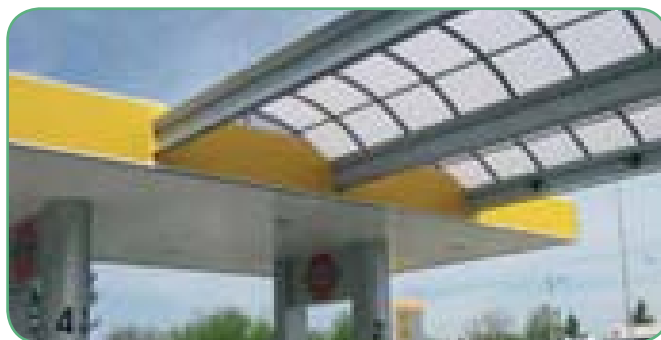
















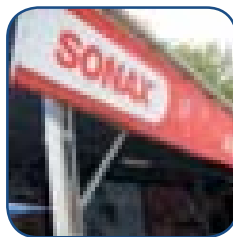




ST. THOMAS'S HOSPITAL  
(Florence Nightingale Museum)



WESTMINSTER



**p. 118**

*4.1. SIGNS WITH VINYL FACE*



**p. 119 -120**

*4.2. STEEL AND ALUMINIUM SIGNS*



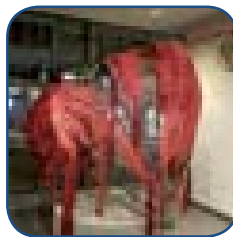
**p. 121**

*4.3. TEXTS FROM PVC SELF ADHESIVE FOIL*



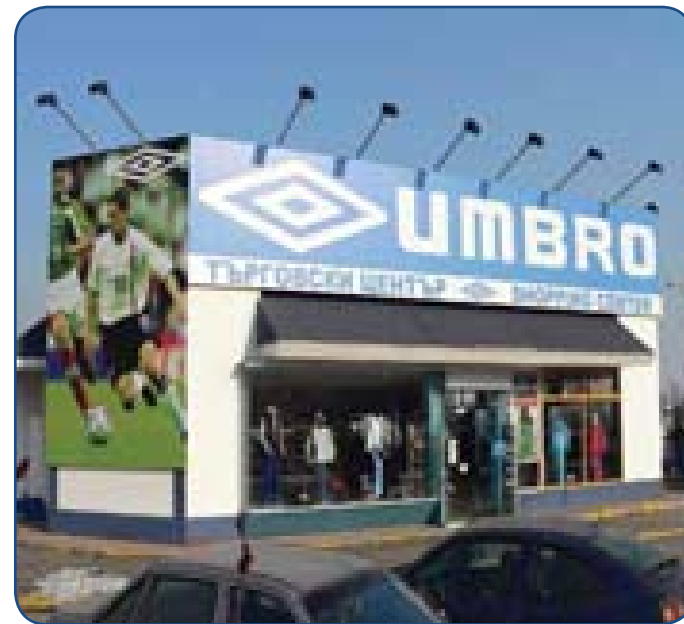
**p. 122**

*4.4. VISUAL COMMUNICATION*



**p. 123**

*4.5. INDOOR DECORATION*



















**p. 126 - 127**

5.1. CLICK FRAMES



**p. 128-129**

5.2. ILLUMINATED CLICK FRAMES



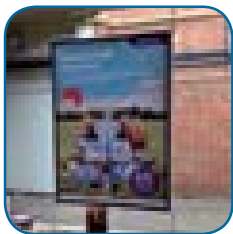
**p. 130 -131**

5.3. ENGRAVED SIGNS



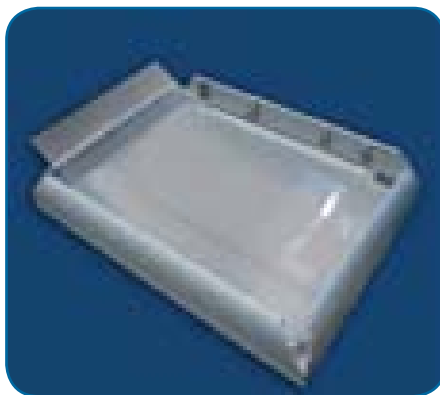
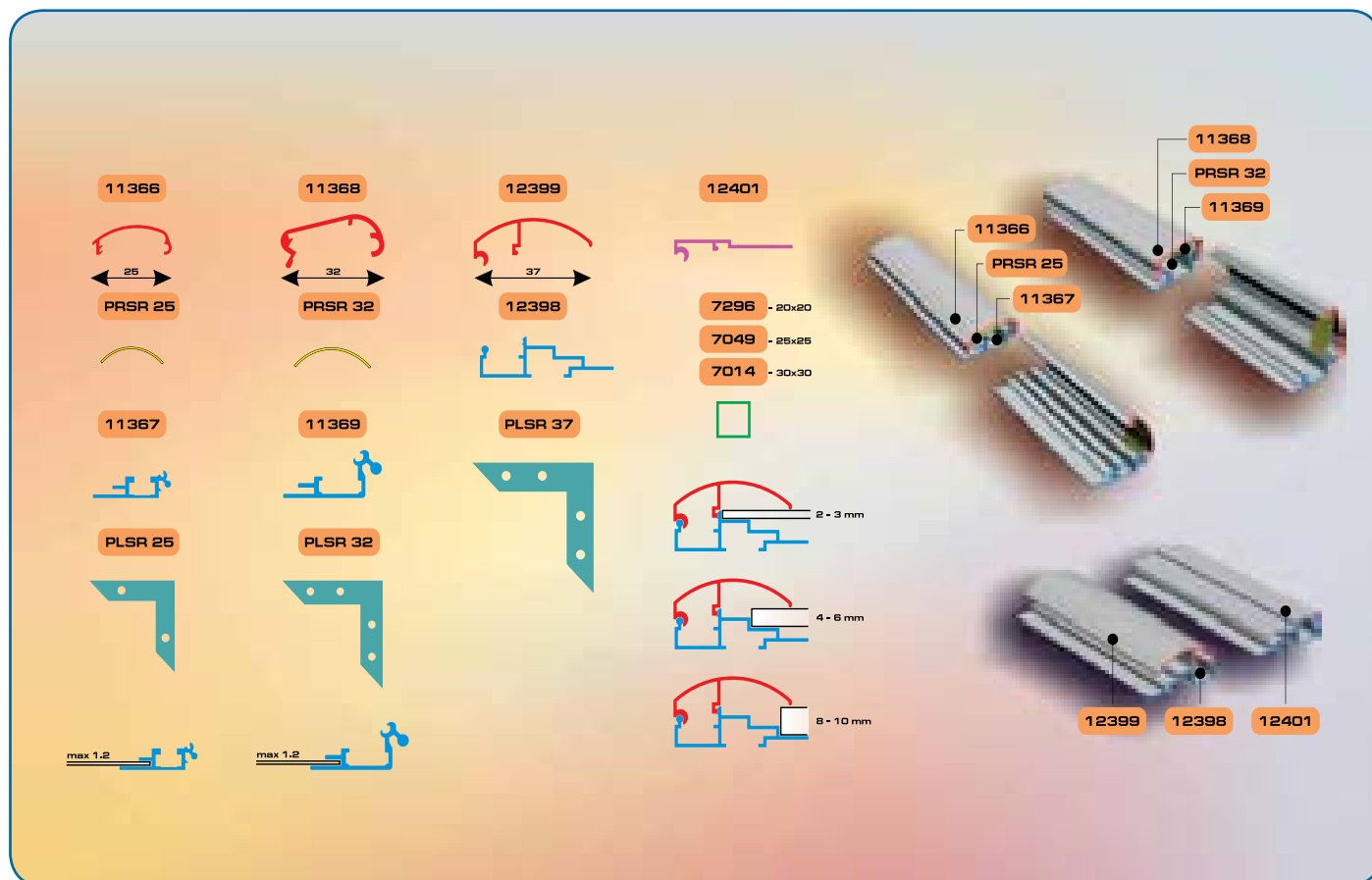
**p. 132**

5.4. A-BOARDS

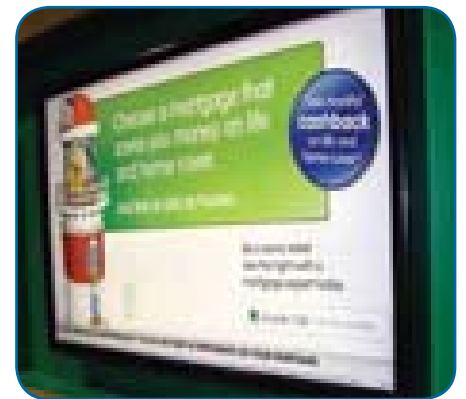
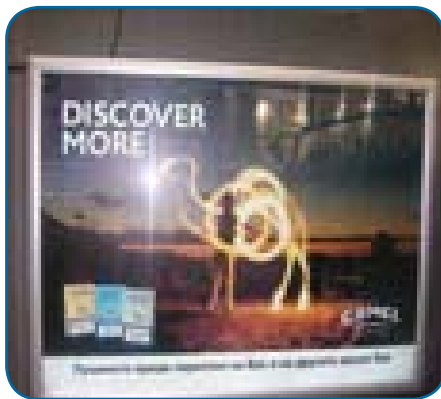


**p. 133**

5.5. LIGHT ENGRAVED PANELS



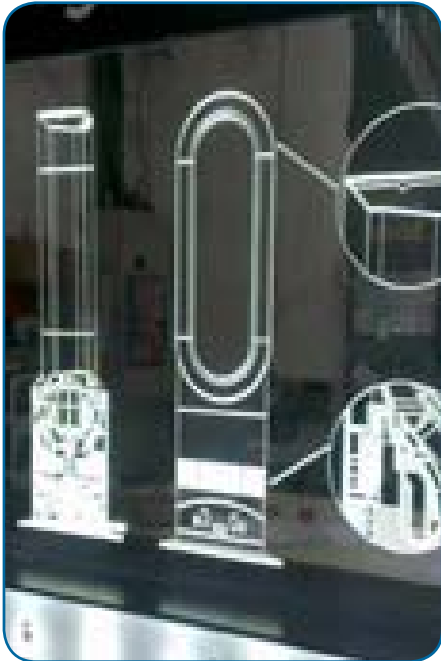




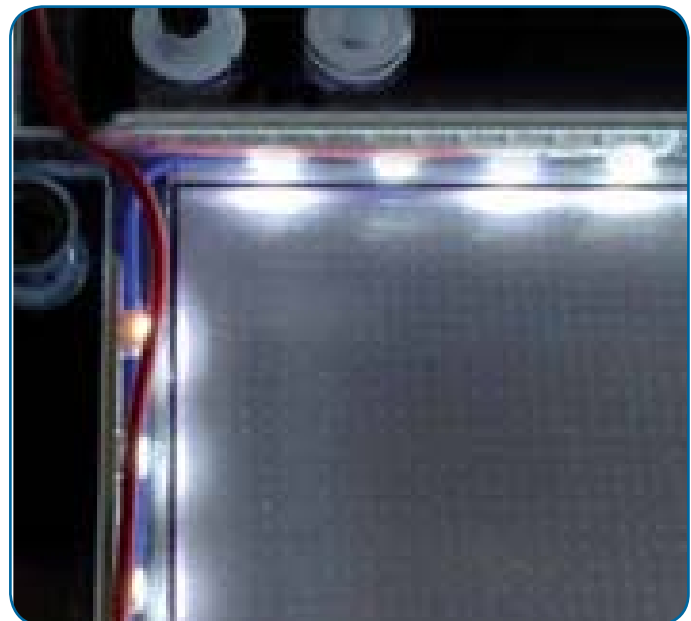








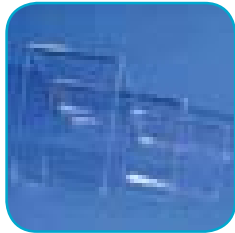




5

CLICK FRAMES, ENGRAVED SIGNS AND A-BOARDS





**p. 136 - 137**

6.1. ACRYLIC  
HOLDERS AND  
MENU DISPLAYS



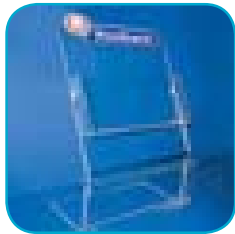
**p. 144**

6.4. RUFFLE  
BOXES



**p. 148**

6.7. CARTRIDGE  
HOLDERS



**p. 138 - 139**

6.2. ACRYLIC  
LEAFLET  
HOLDERS AND  
DISPENSERS



**p. 145**

6.5. PLASTIC  
SHOWCARD  
POCKETS



**p. 149**

6.8. PUSHERS



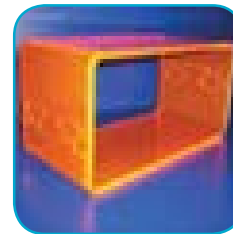
**p. 140 - 143**

6.3. PRODUCT  
DISPENSERS



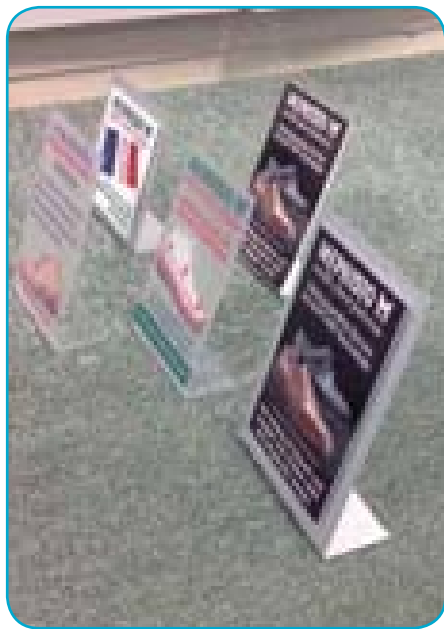
**p. 146 -147**

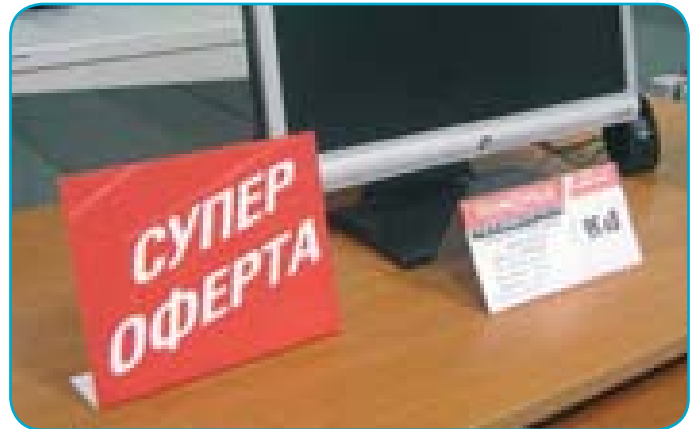
6.6. PRICE TAG  
HOLDERS

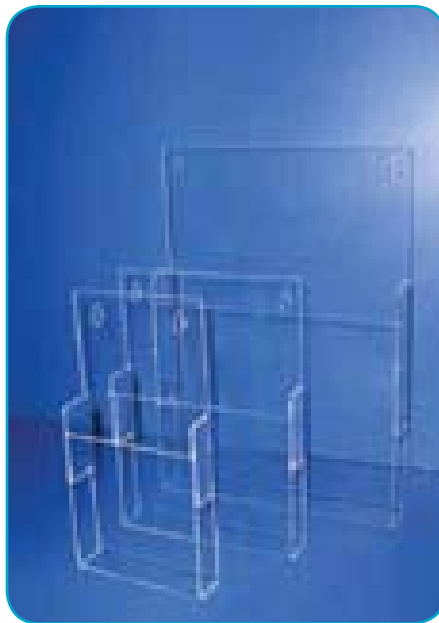


**p. 150 -151**

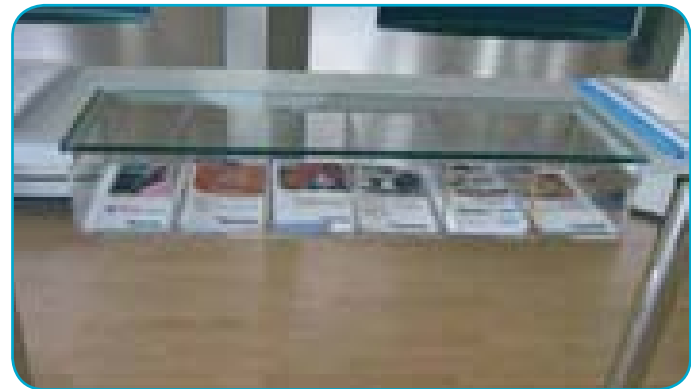
6.9. OTHER ACRYLIC  
DISPLAYS



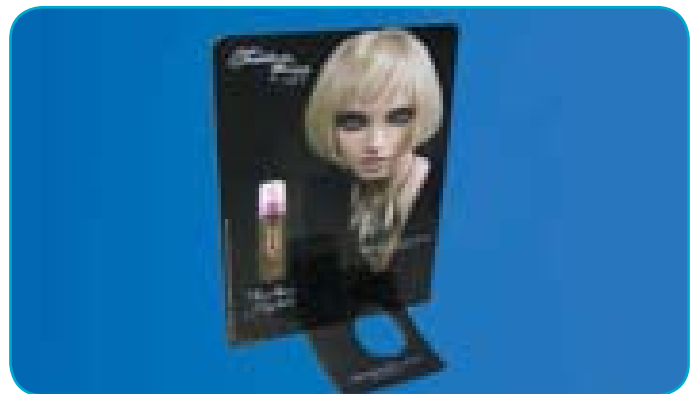
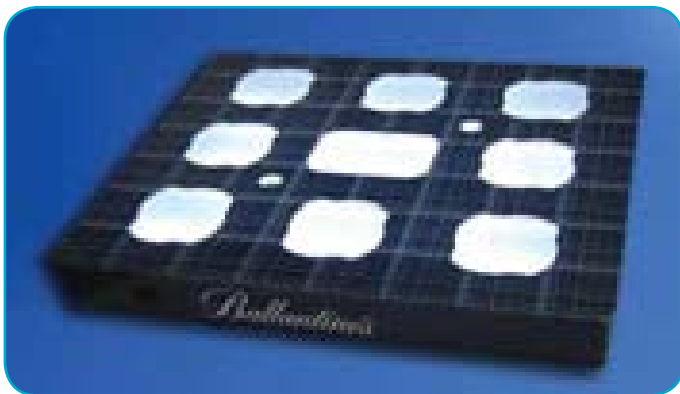
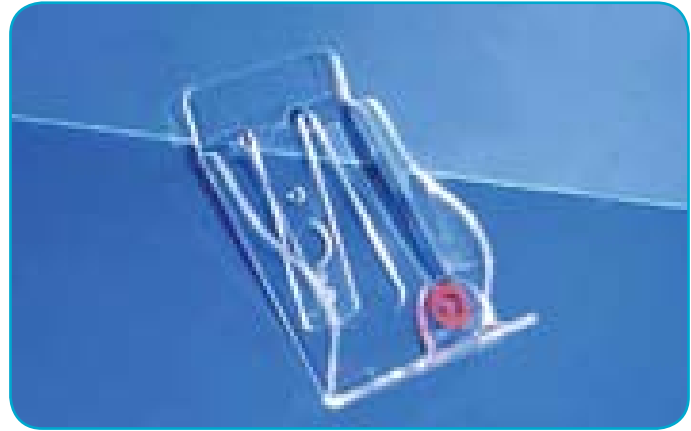




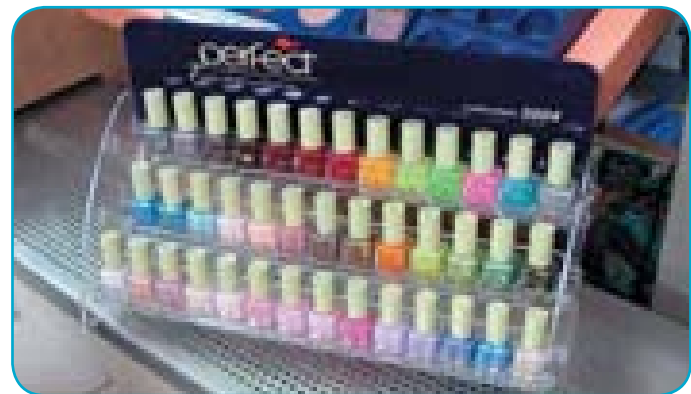
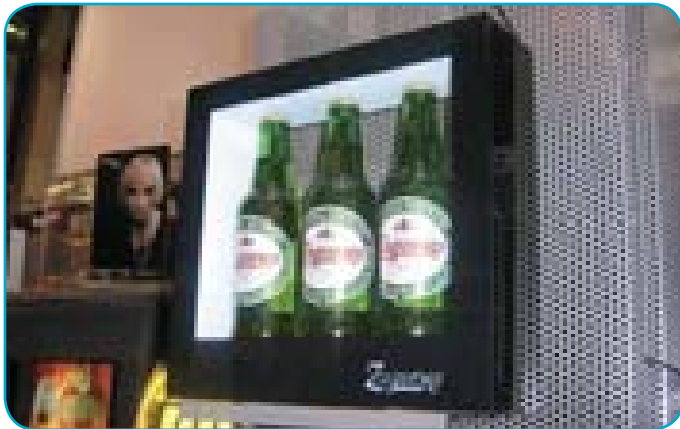




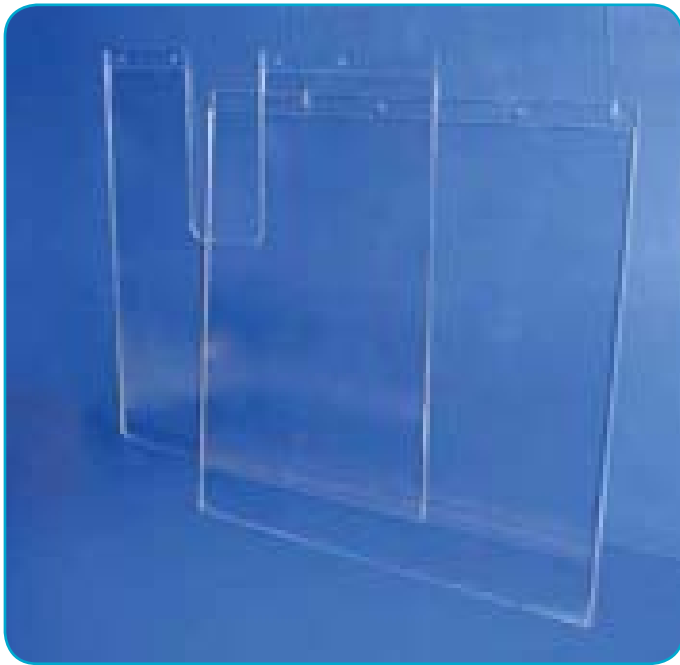


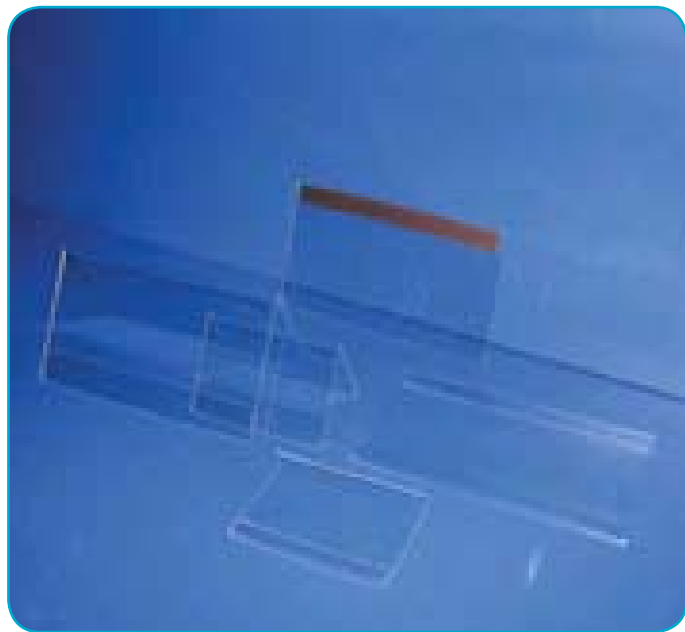






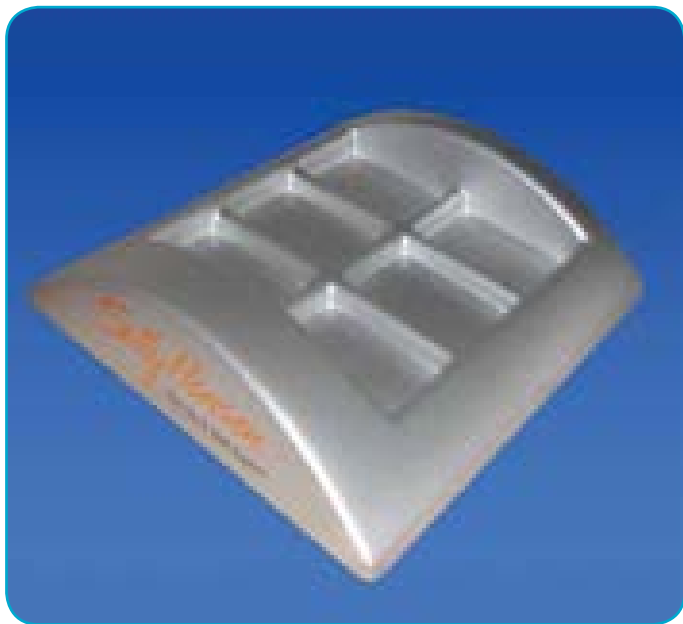


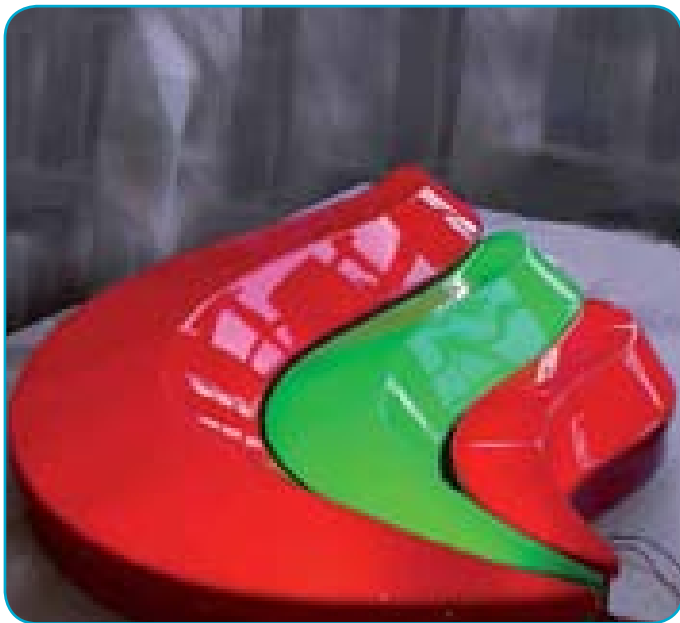




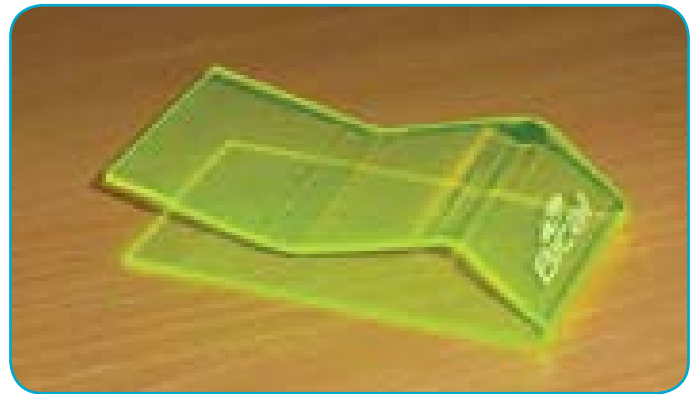
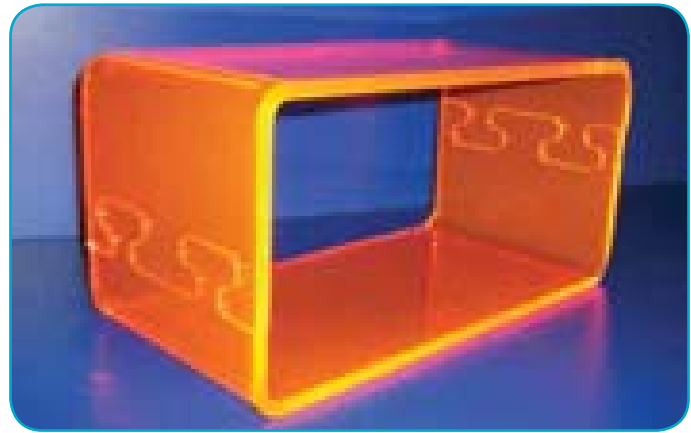
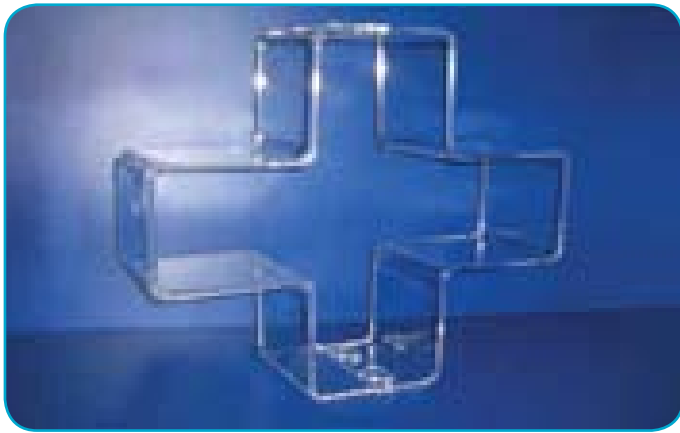














**p. 154**7.1. DIRECT  
MAILING**p. 159**

7.6. MAGAZINES

**p.164**7.12. BOXES  
FROM  
CORRUGATED  
BOARD**p. 155**7.2. BUSINESS  
STATIONERY**p. 160**

7.7. LABELS

**p. 165**

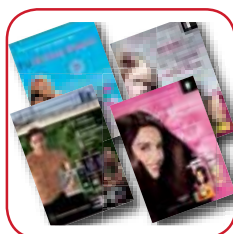
7.14. SHOWBOARDS

**p.156**

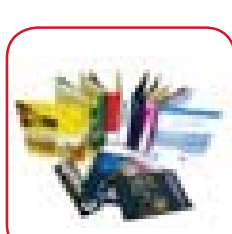
7.3. LEAFLETS

**p. 161**

7.8. CALENDARS

**p. 166 - 167**7.15. NON  
STANDARD  
PRODUCTS**p. 157**

7.4. POSTERS

**p. 162**

7.10. FOLDERS

**p. 158**

7.5. CATALOGUES

**p. 163**

7.11. PACKAGING

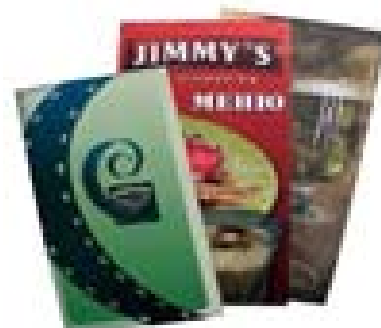








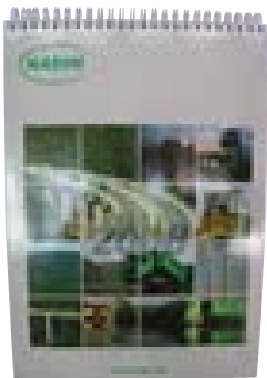
















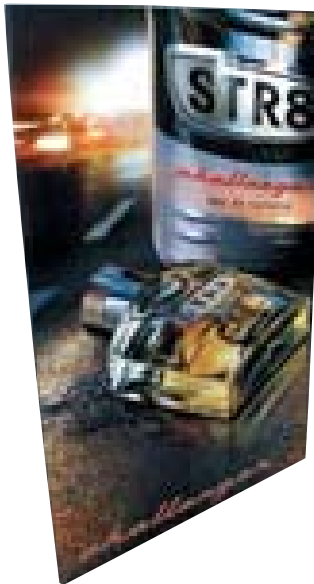


7

LITHO PRINTED PRODUCTS











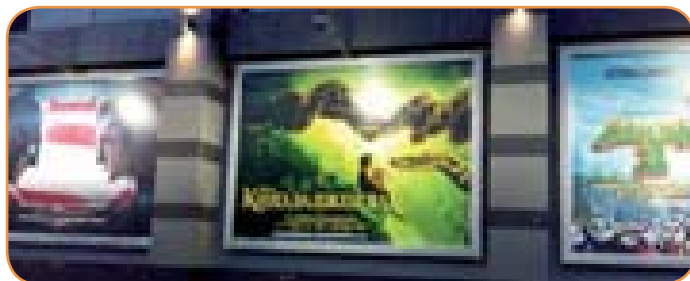
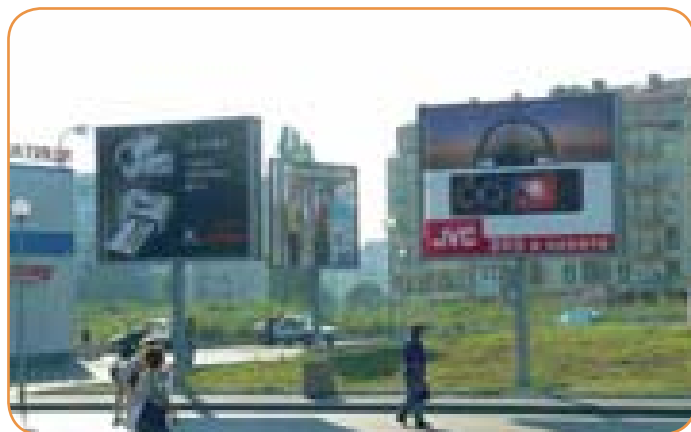
7

LITHO PRINTED PRODUCTS





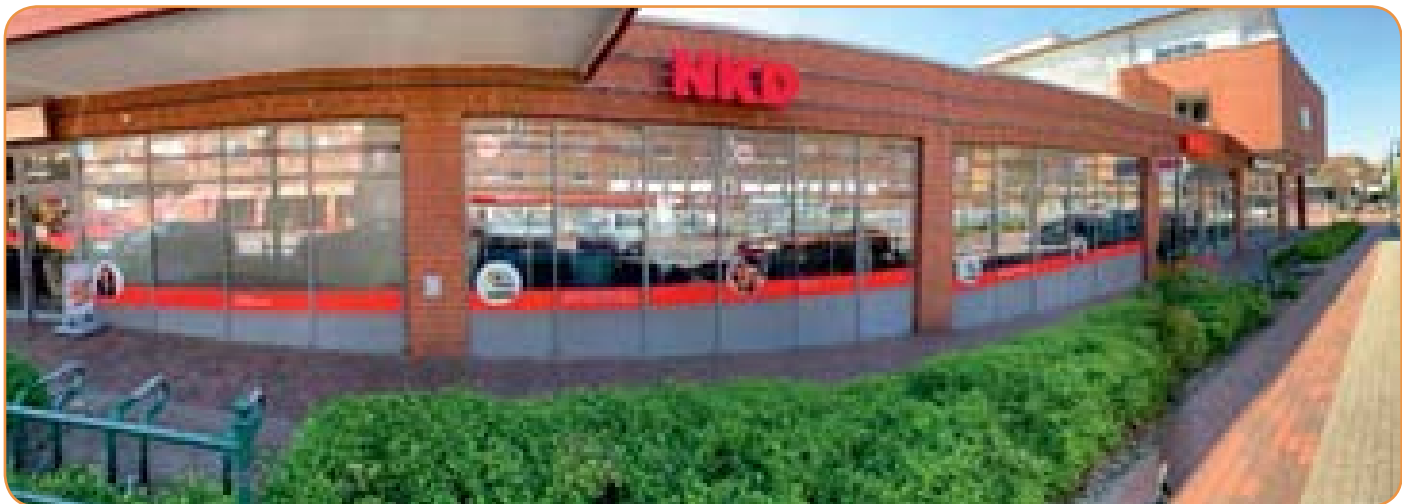
**p. 170****8.1. FRONTLIT  
BANNERS****p. 174****8.5. BACKLIT FOR  
LIGHT SIGNS****p. 171****8.2. BACKLIT  
BANNERS****p. 175****8.6. PRINTING ON  
RIGID  
SURFACES****p. 172****8.3. MESH****p. 176****8.7. VEHICLES****p. 173****8.4. PRINTING ON  
SELF  
ADHESIVE FOIL****p. 177****8.8. SPECIAL  
PRODUCTS**

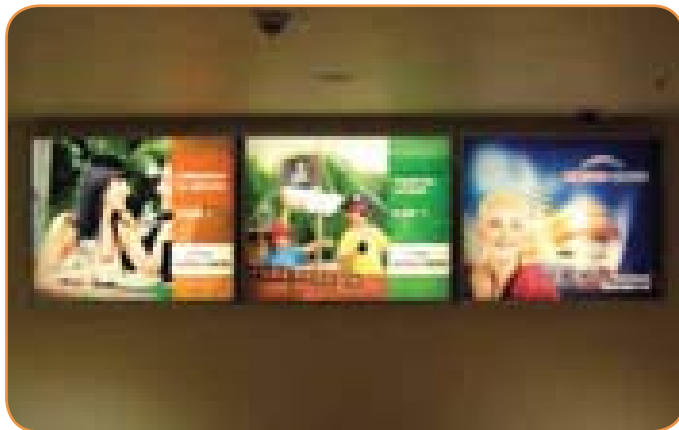


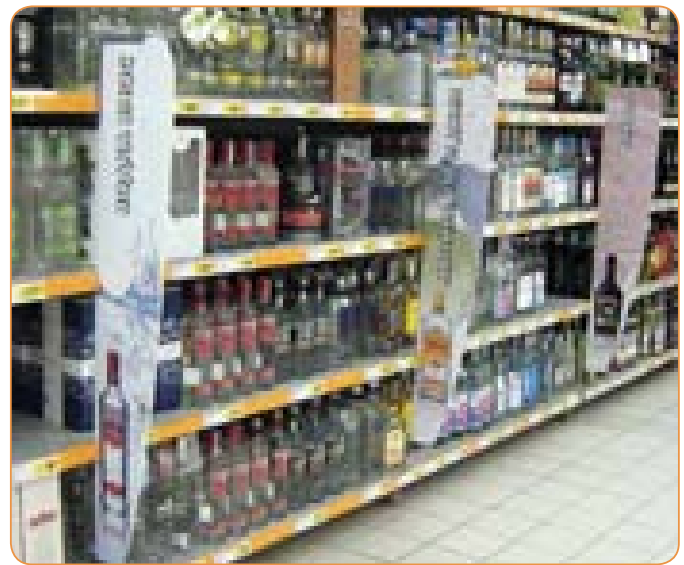






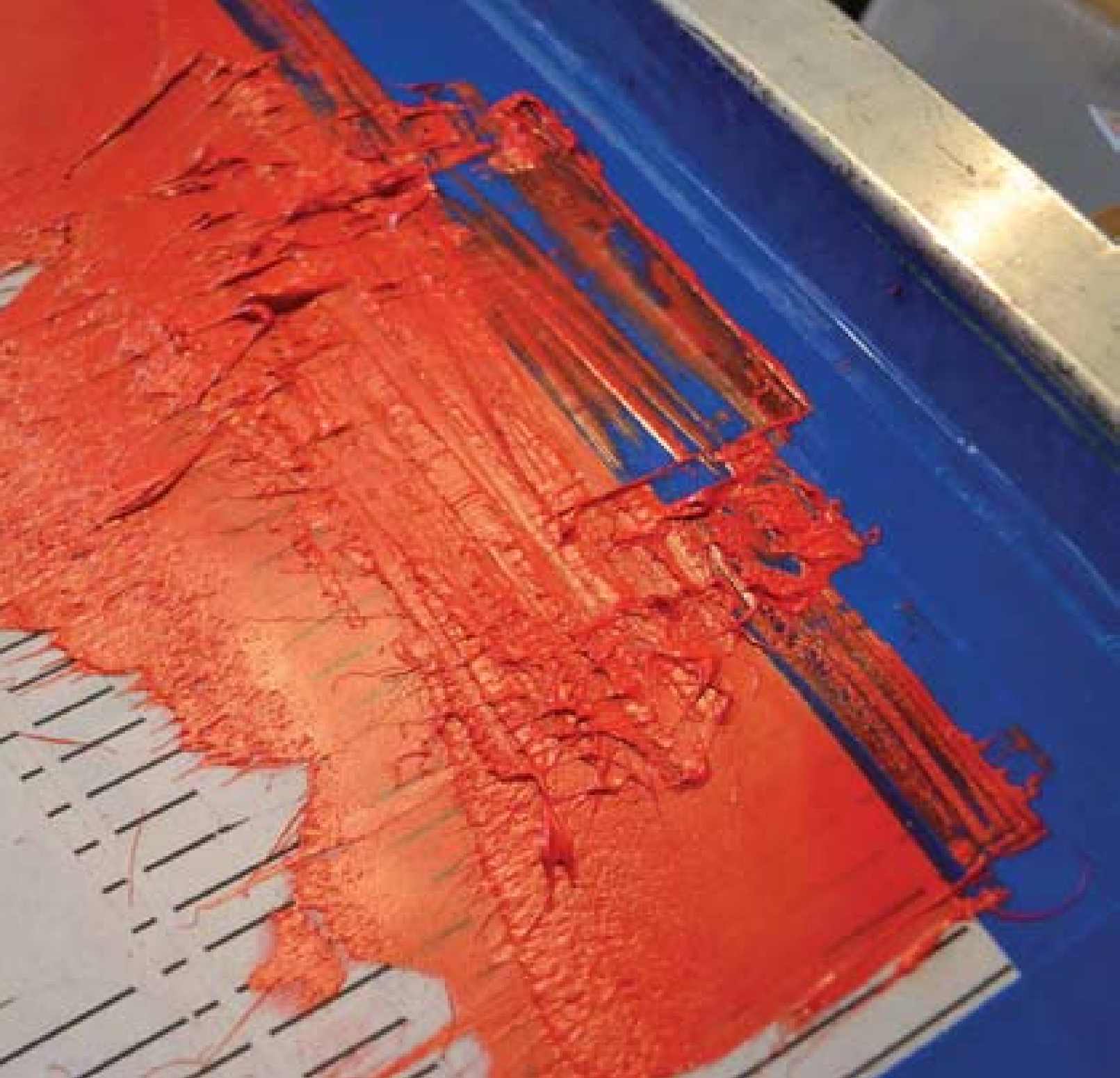
















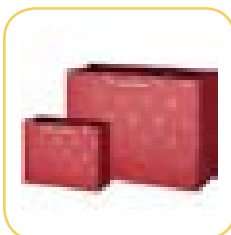
**p. 180**

9.1. SCREEN PRINTING ON RIGID MATERIALS



**p. 181**

9.2. SCREEN PRINTING ON FLEXIBLE MATERIALS



**p. 182**

9.3. SCREEN PRINTING ON PAPER



**p. 183**

9.4. SPECIAL APPLICATIONS







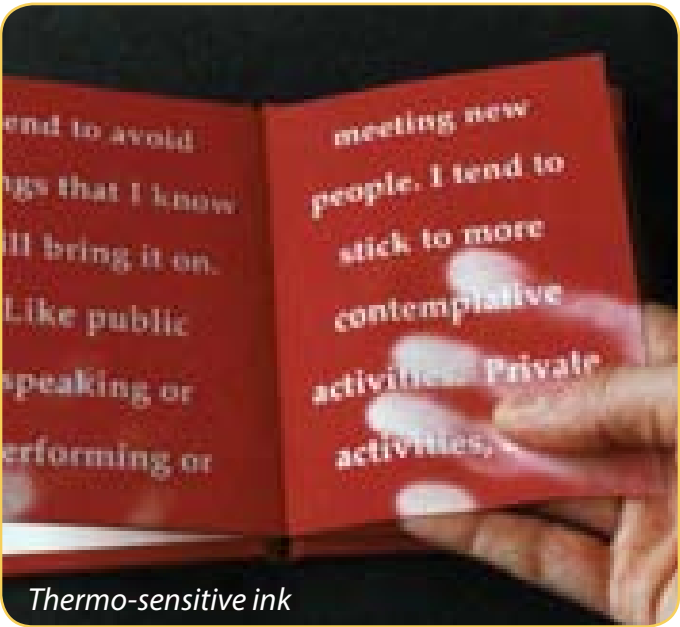
Spot UV Varnish



Spot UV Varnish



Scratch ink applications



Thermo-sensitive ink



*Printing on metal*



*Printing on glass*

*Shoe slip sole*

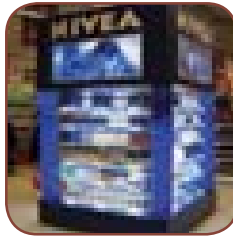


*Special shape products*

*Car fresheners*







***p. 186 - 188***

*10.1. FLOOR STANDING DISPLAYS*



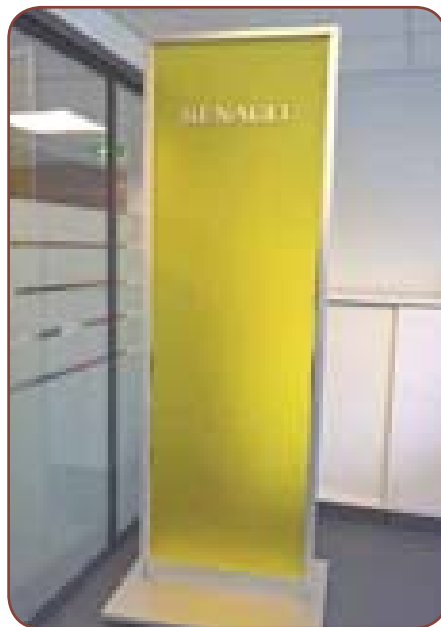
***p. 189***

*10.2. WALL MOUNTED DISPLAYS*



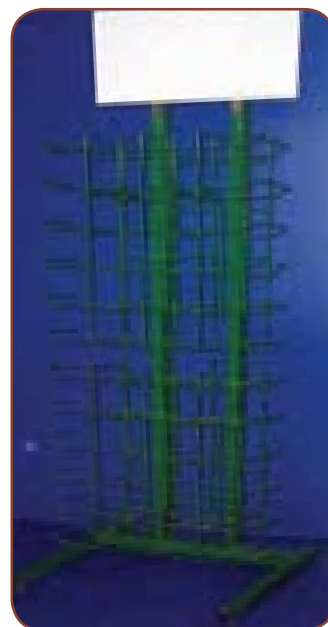
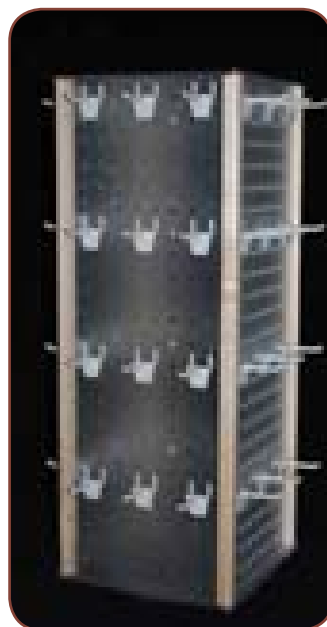
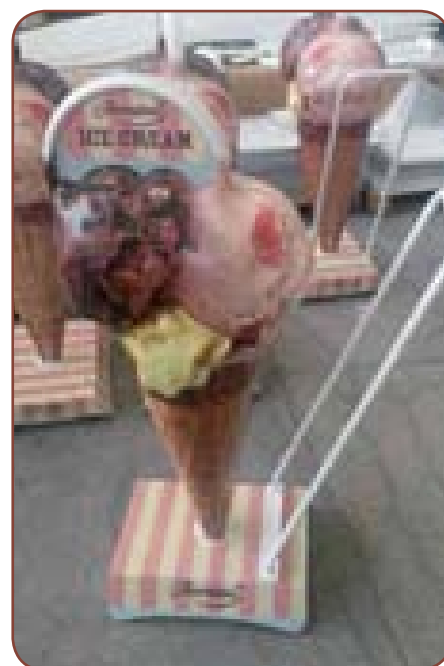
***p. 190 - 191***

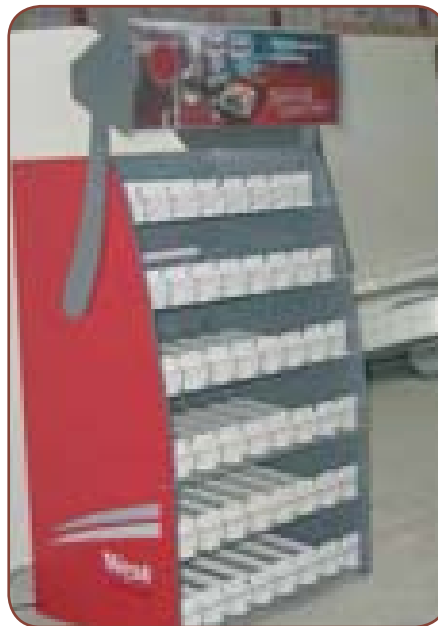
*10.3. CARDBOARD DISPLAYS*





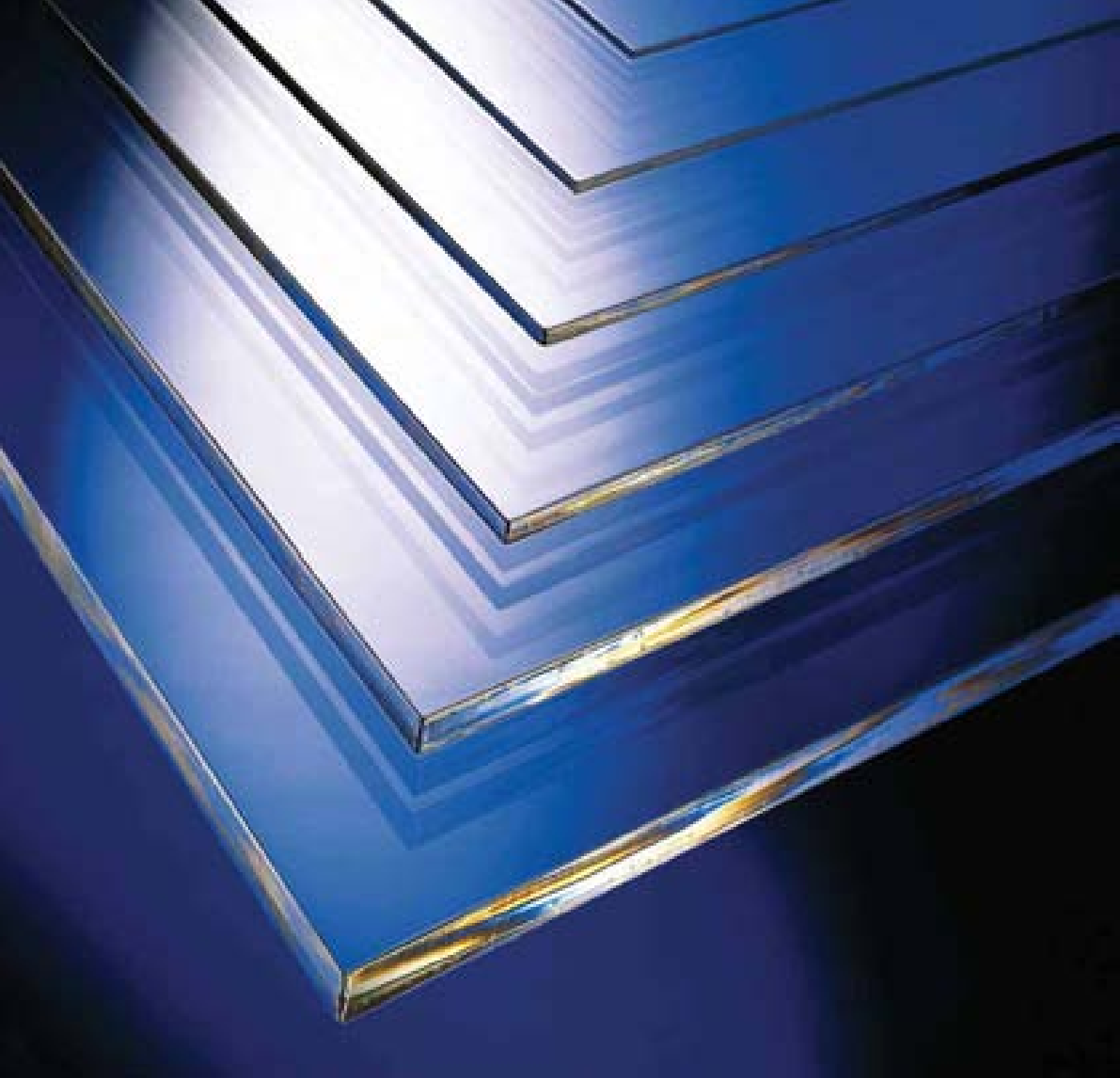








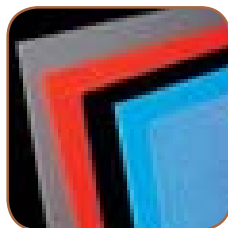






**p. 194 - 195**

11.1.  
PRODUCTION OF  
EXTRUDED SHEETS



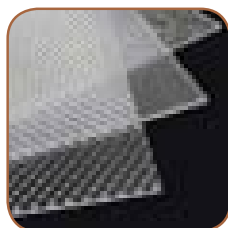
**p. 196 - 197**

11.2.  
POLYSTYRENE EXTRUDED  
SHEETS



**p. 198**

11.3.  
ABS SHEETS AND HIPS FILMS



**p. 199 - 207**

11.4.  
DESIGNS OF ALL  
EMBOSSED SHEETS



**p. 208 - 209**

11.5.  
ACRYLIC SHEETS AND LIGHT  
GUIDE PLATES (LGP)



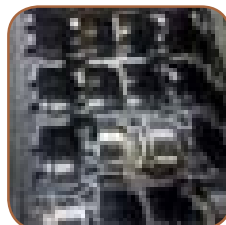
**p. 210 - 211**

11.6.  
DIFFUSER SHEETS FOR LED  
LIGHTING



**p. 212 - 213**

11.7.  
CONDUCTIVE HIPS FILMS, SHEETS AND  
VACUUM FORMED TRAYS



**p. 214 - 215**

11.8.  
VACUUM FORMED PARTS FROM ABS,  
PMMA AND HIPS



**p. 216 - 217**

11.9.  
VACUUM FORMED EGG-PACKS



**p. 218 - 219**

11.10.  
RECYCLING AND ENVIRONMENT



# Production of extruded sheets

We offer plastic solid and co-extruded sheets and films in the following materials:

Polystyrene HIPS/GPPS

ABS

SAN

PP - Polypropylene

SMMA

PMMA (Acrylic) sheets

Our products are known for high quality. We use high quality raw materials from leading global

brands and producers. Our workers are well qualified and have many years of experience.

We work together with our customers and suppliers to develop new products according to the markets and adjust our production to our customer's specific requirements.

Sheet structure, sheet size, colour matching, masking, packaging, pallets and transportation are arranged to fit every needs.

## OUR SHEET EXTRUSION LINES

### CO-EXTRUSION SHEET LINE

#### Model - BREYER 340-115-1

Materials: HIPS, ABS, GPPS, PMMA, SMMA

Production capacity: 300 kg/hour

Sheet thickness: 1.00 mm - 6.00 mm

Maximum sheet width: up to 1200 mm

Maximum sheet length: up to 4050 mm

3 layer co-extrusion

Any colours are available for minimum quantity 300 kg

We can produce one side sheets with relief

### MONO LAYER EXTRUSION SHEET LINE

#### Model - REIFENHÄUSER E/H EH 1200-1-120-30 V

Materials: PMMA, HIPS, GPPS, ABS, PP

Production capacity: 420 kg/hour

Sheet thickness: 1.4 - 11.4mm

Maximum sheet width: up to 2050 mm

Maximum sheet length: up to 6050 mm

Any colours are available for minimum quantity of 300 kg

We can produce one side sheets with relief

Additional option: corona treatment

## OUR FILM EXTRUSION LINES

### FILM CO-EXTRUSION LINE

#### Model - SEIDE

Materials: PS, PP

Production capacity: 600 kg/hour

Film thickness: 200 - 2000 microns

Maximum film width: up to 820 mm

Maximum roll diameter: up to 1000 mm

Core diameter: 76 - 200 mm

### FILM EXTRUSION LINE

#### Model - EKK 120-30 V

Materials: PS

Production capacity: 220 kg/hour

Foil thickness: 180 - 900 microns

Maximum foil width: up to 1200 mm

Maximum roll diameter: up to 650 mm

Core diameter: 76 - 200 mm

Any colours are available for minimum quantity 300 kg





# Polystyrene sheets

Mouse-PS Ltd produce clear and coloured polystyrene sheets. Clear sheets with light transmission 89% have excellent transparency for interior glazing usage, lamps and ceiling light fittings. For this application we can provide also clear, opal white and one side embossed sheets.

Low water absorption of polystyrene sheets determine their use as bath or shower cabin doors. For this application we have different sheets with modern designs.

Polystyrene sheets can be produced with or without UV stabilization and with or without masking film.

## Delivery program of HIPS and GPPS shets

- Standard size: 2050 x 1250 mm
- Maximum Length: 6050 mm
- Maximum width: 2050 mm
- Thickness range: 1.00 - 11.40 mm
- Cut to size: available on request, no minimum quantity
- Surface texture: gloss/gloss, gloss/mat, embossed/gloss, embossed/mat

## HIPS benefits:

- › Easy for thermoforming
- › High impact strength
- › Good thermal qualities
- › Possible food contact approval
- › Low water absorbsion
- › Easy to recycle
- › Low price

## GPPS sheets / Crystal sheets benefits:

- › Good surface hardness and scratch resistance
- › Excellent transparency
- › Good thermal stability
- › Low water absorbsion
- › Possible food contact approval
- › Easy to recycle
- › Low price

- Available embossing designs: 13, 15, 17, 22, 23, 25, 31, 34, 35, 39, 41

- These colours are available for both extruded and co-extruded sheets.
- Any colours are available at minimum quantity of 300 kg.



RAL 9001  
RAL 9003  
RAL 9010  
RAL 9016

RAL 1018

RAL 2004

RAL 3003  
RAL 3020  
PANTONE  
RUBINE RED

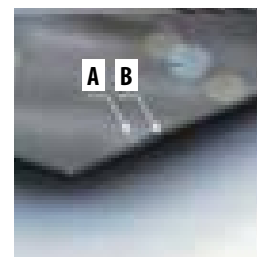
PANTONE  
266

# Co-extruded HIPS and GPPS Sheets

These sheets can be extruded in 2 layers (AB) or 3 layers (ABA).

The co-extrusion of crystal polystyrene over HIPS core makes the colours to look glossy, brighter and nicer.

The co-extrusion with virgin material on A layer and recycled material in the middle B layer of the sheet gives our customers sheets with low price, brilliant surface and good opacity.



## Delivery program 2 or 3 layers co-extruded polystyrene sheets:

- › Standard size: 2050 x 1200 mm
- › Maximum Length: 4050 mm
- › Maximum width: 1200 mm
- › Thickness range: 1.00 - 6.00 mm
- › Any RAL colour for upper (1) and lower (3) layers
- › Middle layer (2) - virgin HIPS in ANY RAL colour or 100% recycled HIPS in grey or black

## Delivery program to one or both sides co-extruded polystyrene sheets with gloss layer:

- › Standard size: 2050 x 1200 mm
- › Maximum Length: 4050 mm
- › Maximum width: 1200 mm
- › Thickness range: 1.00 - 6.00 mm
- › Thickness of upper (1) and lower (3) layers 0.05 - 0.2 mm
- Middle layer - virgin HIPS in ANY RAL colour

RAL 5002  
RAL 5026  
PANTONE  
3005

RAL 7004  
RAL 7035  
RAL 7038  
RAL 7040  
RAL 7043

RAL 8011

RAL 9005

RAL 9006  
RAL 9022  
Metalic colors

## ABS Sheets

Our series of ABS sheets has very high impact-strength and impressive thermal qualities. These sheets are easy to thermoform and fabricate.

### ALSO AVAILABLE IN:

- ABS sheets has extra UV stabilizers added to improve weather resistance
- ABS sheets as a food compliant product version
- Dual colouring on both sides
- Reduce flammability - fire retardant
- Corona treatment

### Delivery program of ABS sheets:

Standard size: 2050 x 1250 mm

3050 x 2050 mm

Maximum length: 6050 mm

Maximum width: 2050 mm

Thickness range: 1.00 – 11.40 mm

Cut to size: Available on request, no minimum quantity.

**Any colour or sheet size is available for minimum quantity 300 kg**



Available Colours: **RAL** 1018, 2004, 3003, 5002, 7004, 7040, 8011, 9001, 9003, 9005, 9006, 9010, 9022

## HIPS films

**We have 2 film extrusion lines - model SEIDE and model EKK 120-30 V**

Production capacity: 600 kg/hour

Film thickness: 180 - 2000 microns

Maximum film width: up to 1200 mm

Maximum roll diameter: up to 1000 mm

Core diameter: 76 - 200 mm

### Special Features:

- food contact version
- film with good cold-resistance
- film with good impact resistance
- UV protection - increase weatherability
- any colour by RAL and Pantone
- suitable for vacuum forming



## Embossed sheets

### DESIGN 41 MAT



#### Delivery program:

Sheet width:  $\leq 1200$  mm

Sheet length: 700 mm - 6050 mm

Thickness: 1.5 - 4.0 mm

Polymers: GPPS, HIPS, ABS, SAN, PMMA

Colours: any transparent, translucent and opaque

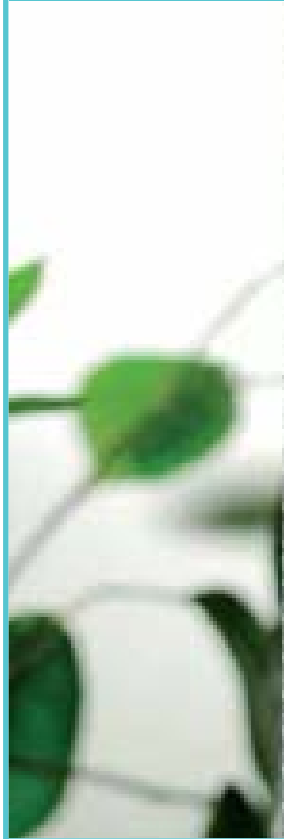
RAL colours in request

Minimum order for sheet size, colour and thickness: 300 kg

Production time: up to 2 weeks

## DESIGN 22

## Embossed sheets

**Delivery program:**Sheet width:  $\leq 1200$  mm

Sheet length: 700 mm - 4050 mm

Thickness: 2.4 - 5.0 mm

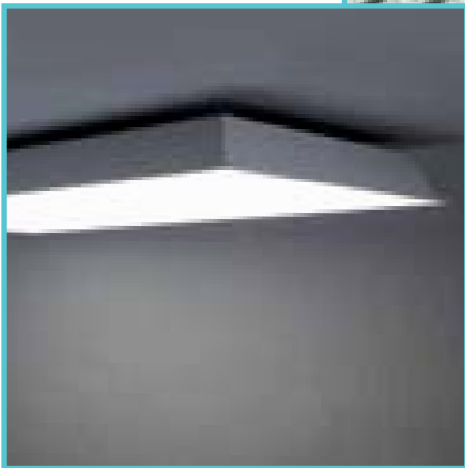
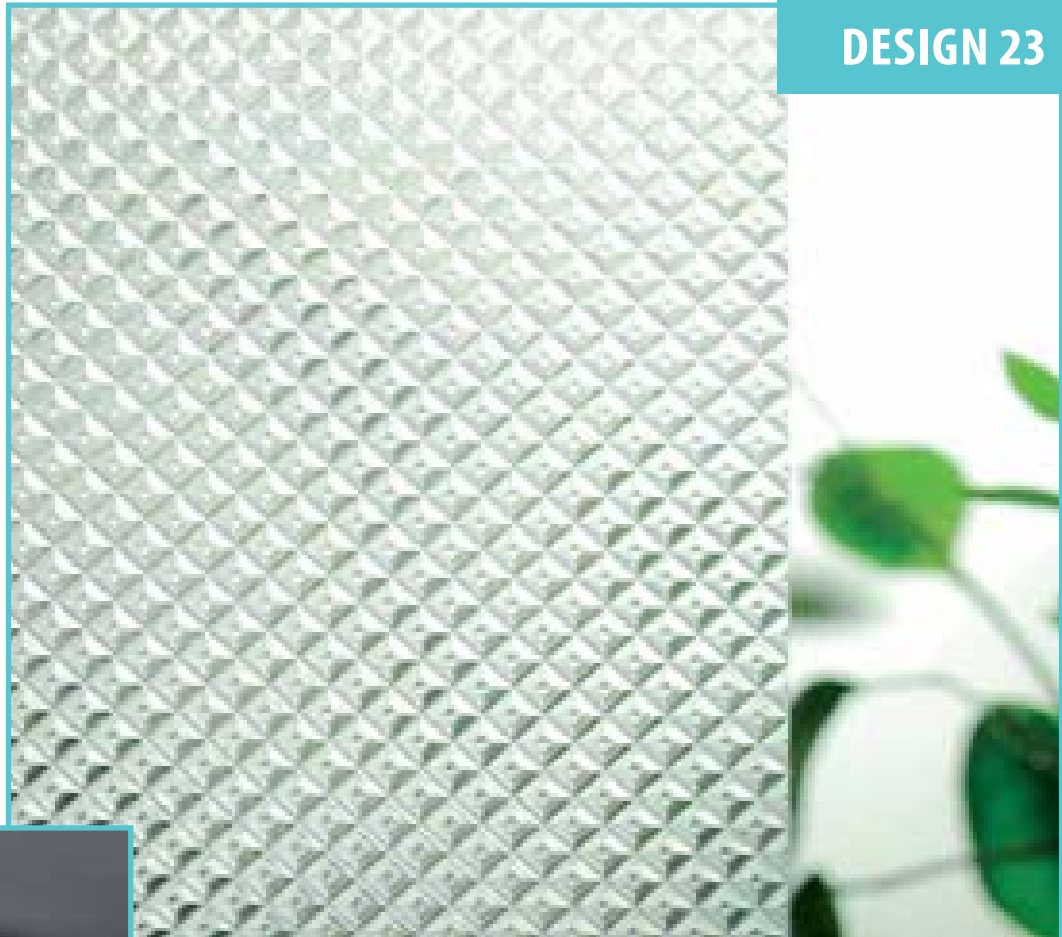
Polymers: GPPS, SAN, PMMA

Colours: any transparent and translucent colours in request

Minimum order for sheet size, colour and thickness: 300 kg

Production time: up to 2 weeks



**Embossed sheets****DESIGN 23****Delivery program:**

Sheet width:  $\leq 1200$  mm

Sheet length: 700 mm - 4050 mm

Thickness: 2.4 - 5.0 mm

Polymers: GPPS, SAN, PMMA

Colours: any transparent and translucent colours in request

Minimum order for sheet size, colour and thickness: 300 kg

Production time: up to 2 weeks

## DESIGN 35

## Embossed sheets

**Delivery program:**Sheet width:  $\leq 2000$  mm

Sheet length: 700 mm - 4050 mm

Thickness: 2.4 - 5.0 mm

Polymers: GPPS, SAN, PMMA

Colours: any transparent and translucent colours in request

Minimum order for sheet size, colour and thickness: 300 kg

Production time: up to 2 weeks





## Embossed sheets

RAL 9001  
RAL 9003  
RAL 9010  
RAL 9016

RAL 1018

RAL 2004

RAL 3003  
RAL 3020  
PANTONE  
RUBIN RED

RAL 5002  
RAL 5026  
PANTONE  
3005

RAL 7004  
RAL 7035  
RAL 7038  
RAL 7040  
RAL 7043

RAL 8011

RAL 9005

RAL 9006  
RAL 9022

PANTONE  
266

## DESIGN 34



### Delivery program:

Sheet width:  $\leq 2000$  mm

Sheet length: 700 mm - 6050 mm

Thickness: 1.6 - 8.9 mm

Polymers: GPPS, HIPS, ABS, SAN, PMMA

Colours: any transparent, translucent and opaque

RAL colours in request

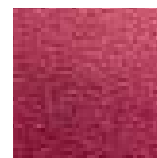
Minimum order for sheet size, colour and thickness: 300 kg

Production time: up to 2 weeks

## DESIGN 39

## Embossed sheets

## COLOURS

**Delivery program:**Sheet width:  $\leq 1200$  mm

Sheet length: 700 mm - 4050 mm

Thickness: 2.0 - 5.0 mm

Polymers: HIPS, ABS

Colours: any RAL colours in request

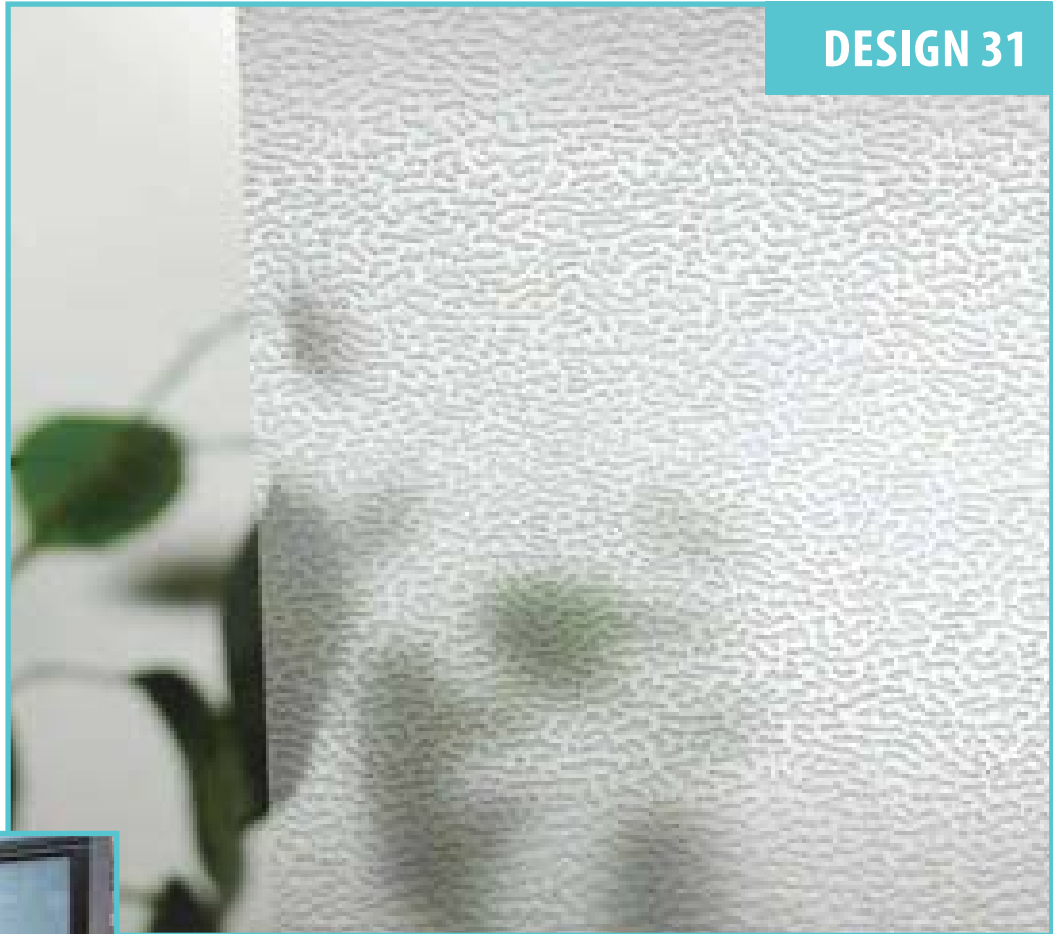
Minimum order for sheet size, colour and thickness: 300 kg

Production time: up to 2 weeks



## Embossed sheets

### DESIGN 31



#### **Delivery program:**

Sheet width:  $\leq 1200$  mm

Sheet length: 700 mm - 4050 mm

Thickness: 2.0 - 5.0 mm

Polymers: HIPS, ABS

Colours: any transparent, translucent and opaque

RAL colours in request

Minimum order for sheet size, colour and thickness: 300 kg

Production time: up to 2 weeks

**DESIGN 15****DESIGN 17**

**Embossed sheets****DESIGN 13****Delivery program for designs 13, 15 and 17:**

Sheet width:  $\leq 1200$  mm

Sheet length: 700 mm - 4050 mm

Thickness: 1.8 - 5.0 mm

Polymers: GPPS, SAN, PMMA

Colours: any transparent and translucent colours in request

Minimum order for sheet size, colour and thickness: 300 kg

Production time: up to 2 weeks

# Acrylic sheets

Our acrylic sheets have good optical properties and surface. We are producing clear and white opal sheets. PMMA sheets are used in advertising industry, for the lighting luminaries or other industrial parts.

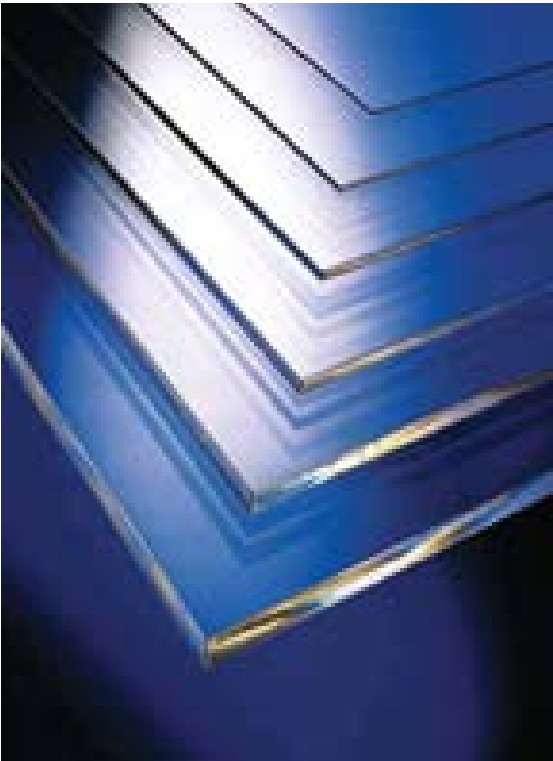
**PMMA sheets have following benefits**

- Excellent transparency
- Very good weathering and ageing resistance
- Easy for handle and thermo forming
- High impact strength

They can be machined using all the usual methods, such as sawing, drilling, laser or router cutting and polishing.

**Delivery program of acrylic /PMMA sheets**

- Sheet size: 3050 x 2050 mm
- Thickness range: 2.00 – 5.00 mm
- Colors - clear, opal, white opaque



Model Name	Material	Thickness	Color	LT	Surface	Sheet size	Quantity sheets on pallet
AC-0000	PMMA	2.00 mm	clear	92 %	gloss/gloss	3050x2050 mm	60
AC-0000	PMMA	3.00 mm	clear	92 %	gloss/gloss	3050x2050 mm	40
AC-0000	PMMA	4.00 mm	clear	92 %	gloss/gloss	3050x2050 mm	30
AC-0000	PMMA	5.00 mm	clear	92 %	gloss/gloss	3050x2050 mm	24
AC-0000-WH30	PMMA	2.00 mm	White opal	30 %	gloss/gloss	3050x2050 mm	60
AC-0000-WH30	PMMA	3.00 mm	White opal	30 %	gloss/gloss	3050x2050 mm	40
AC-0000-WH30	PMMA	4.00 mm	White opal	30 %	gloss/gloss	3050x2050 mm	30
AC-0000-WH30	PMMA	5.00 mm	White opal	30 %	gloss/gloss	3050x2050 mm	24
AC-0000-WH6	PMMA	3.00 mm	White opaque	6 %	gloss/gloss	3050x2050 mm	40

# Light Guide Plates (LGP)

We produce specialized laser engraved Light Guide Plate - LGP.

Our know-how, specialized software and measurement systems guarantee equal light distribution.

Depending on the direction of light, the number of LEDs and their power we can change the number of engraved dots, their shape and depth, which guarantees equal light distribution and to avoid "moire" effect. The raster can be different in any parts of the plate.

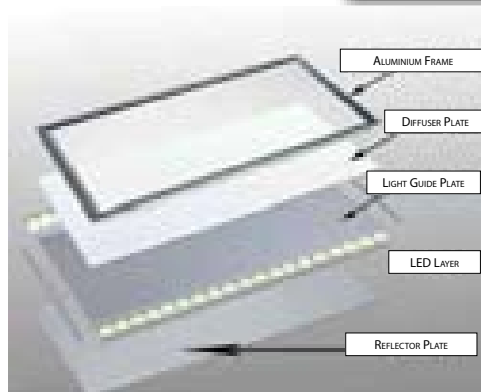
Achieving equal light distribution is specific for each luminaire or advertisement, that's why we produce LGP panels according to the specific needs and requirements of our clients. Non rectangular, round or oval shapes are also available.

In order to achieve the best performance of our LGP we can use cast, continuous cast, cast edgelite or extruded lenticular acrylic sheets.

**We will produce the optimal LGP panels for you according to:**

- Size and thickness of the lighting fixture
- Number of the LEDs /light sources/
- LED's power
- Direction of the light - one, two or four sides

Our LGP panels are widely used in architecture, advertisement, interior design and lighting industry.



# Diffuser sheets for LED lighting

Our company has the technology and know-how to produce diffuser sheets specialized for the lighting industry. They have brilliant optical properties and surface.

We have the ability to mix with precision different masterbatches and additives to produce sheets with controlled LT and Haze percentage ratio according to the needs of our customers. This lets our clients control the glare of the luminaires UGR (Unifide Glare Raiting).

We developed a specialized series of diffusers.

These sheets guarantee equal light distribution over the full surface of the diffuser while the lighting source remains hidden and there are no light spots on the diffuser.

Our technology enables us to control the LT and Haze ratio according to our clients' needs for all thicknesses and sizes.

Special thickness, sheet sizes and Light trasmittance are possible.

On request one or both sides of sheet surfaces can be gloss, matt or embossed.

**Cut to size:** Available on request, no minimum quantity.

Model Name	Material	Thickness	Color	LT	Surface	Sheet size	Quantity sheets on pallet
P2541-D080	GPPS	1.50 mm	diffuser	80 %	matt/embossed	2440x1220 mm	200
P2541-D082	GPPS	1.50 mm	diffuser	82 %	matt/embossed	2440x1220 mm	200
P2541-D084	GPPS	1.50 mm	diffuser	84 %	matt/embossed	2440x1220 mm	200
A2541-D077	PMMA	1.70 mm	diffuser	77 %	matt/embossed	2440x1220 mm	170
A2541-D082	PMMA	1.70 mm	diffuser	82 %	matt/embossed	2440x1220 mm	170
A2541-D084	PMMA	1.70 mm	diffuser	84 %	matt/embossed	2440x1220 mm	170
AD080	PMMA	2.00 mm	diffuser	80 %	gloss/gloss	3050x2050 mm	60
AD083	PMMA	2.00 mm	diffuser	83 %	gloss/gloss	3050x2050 mm	60
AD087	PMMA	2.00 mm	diffuser	87 %	gloss/gloss	3050x2050 mm	60
PD050	GPPS	2.00 mm	White opal	50 %	gloss/gloss	2440x1220 mm	200



## Sheets for lighting application

### Embossed sheets



### Diffuser sheets



DESIGN 25

**Delivery program for sheets with design 25:**

Sheet width:  $\leq 1200$  mm  
 Sheet length: 700 mm - 4050 mm  
 Thickness: 1.2 - 4.0 mm  
 Polymers: GPPS, SMMA, PMMA  
 Colours: any transparent or translucent  
 RAL colours on request



## Electrically conductive HIPS films and sheets

Conductive polystyrene offers reliability and value for applications that require dissipation of static charges and protection from electrostatic discharge (ESD).

State-of-the-art technology for dosing and mixing gives us the possibility to offer different approach to provide the exact degree of conductivity required for your application, whether anti-static, static dissipative, ESD protection, conductive, or EMI/RFI shielding.

Special compounds that we use in the production of sheets and films can be custom tailored to offer different surface or volume resistance in range from  $10^1$  to  $10^{12}$  ( $\Omega \cdot \text{cm}$ )

### Types of Conductive Materials

Conductive thermoplastic materials are divided into major classifications based on their electrical properties and decay rates for static charges.

*Anti-Static materials* - volume resistance  $10^{10}$  to  $10^{12} \Omega \cdot \text{cm}$

*Static Dissipative materials* - volume resistance  $10^6$  to  $10^{12} \Omega \cdot \text{cm}$

*Conductive materials* - volume resistance  $10^3$  to  $10^6 \Omega \cdot \text{cm}$

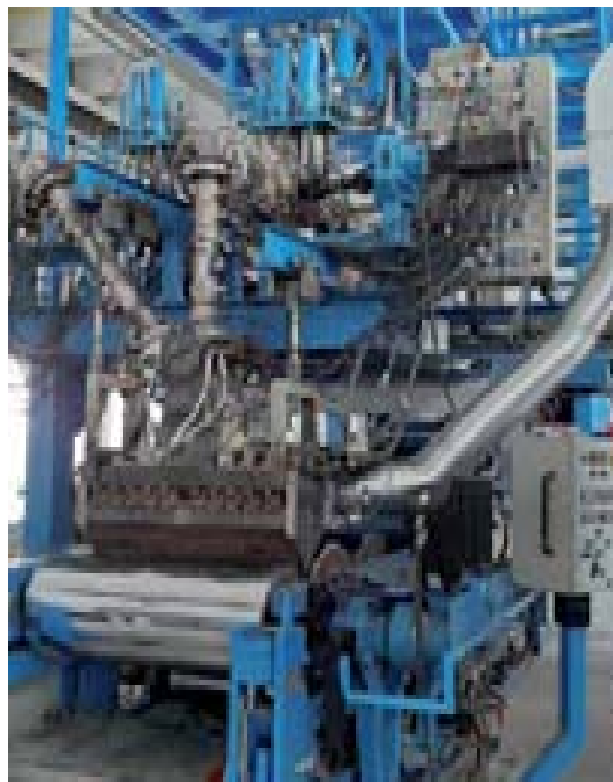
*EMI/RFI Shielding materials* - volume resistance  $10^1$  to  $10^4 \Omega \cdot \text{cm}$

### Technical parameters for our extruded HIPS ESD films

<i>Extrusion technology:</i>	Mono-extrusion or Co-extrusion
<i>Co-extrusion layers:</i>	A, AB, ABA
<i>Surface resistance:</i>	$10^3 - 10^{12} \Omega$
<i>Volume resistance:</i>	$10^3 - 10^{12} \Omega \cdot \text{cm}$
<i>Thickness:</i>	200 - 2000 microns
<i>Rolls width:</i>	on request up to 820 mm
<i>Rolls diameter:</i>	up to 1200 mm
<i>Rolls weight:</i>	up to 540 kg

### Technical parameters for our extruded HIPS ESD sheets

<i>Extrusion technology:</i>	Mono-extrusion or Co-extrusion
<i>Co-extrusion layers:</i>	A, AB, ABA
<i>Surface resistance:</i>	$10^3 - 10^{12} \Omega$
<i>Volume resistance:</i>	$10^3 - 10^{12} \Omega \cdot \text{cm}$
<i>Sheet thickness:</i>	1.0 - 6.0 mm
<i>Sheet width:</i>	up to 1400 mm
<i>Sheet length:</i>	up to 3000 mm or cut to size



# Vacuum formed electrically conductive HIPS transport trays

Our extruded conductive polystyrene film is an effective solution for production of different kinds of vacuumformed transport trays, which are used in electronic industry for packing components.

This films and trays prevent electronic components from electrical discharge damage.

We can offer you to make mould design, 3D sample printed tray, production tests and serial production according to our customer needs.

## Technical parameters for our vacuum formed HIPS ESD trays

*Maximum forming size from foil:* 700x500x50 mm

*Maximum foil thickness:* 2.0 mm

*Maximum forming size from sheet:* 1000x660x150 mm

*Maximum sheet thickness:* 4.0 mm

*Maximum surface resistance:*  $10^3 - 10^9 \Omega$

*Maximum volume resistance:*  $10^3 - 10^{12} \Omega \cdot \text{cm}$

*Maximum surface resistance:*  $10^3 - 10^9 \Omega$



# Vacuum formed parts from ABS

We can make product design, moulds engineering, production and also manufacture ready vacuum formed parts from ABS sheets. This parts are used in different industries.

## Technical parameters for our vacuumforming machines

### KIEFEL machine

*Maximum forming size:* 1000x660x150 mm

*Maximum sheet thickness:* 4.0 mm

### HANWOOD machine

*Maximum forming size:* 3000x2000x600 mm

*Maximum sheet thickness:* 10.0 mm



# Vacuum formed parts from PMMA and HIPS

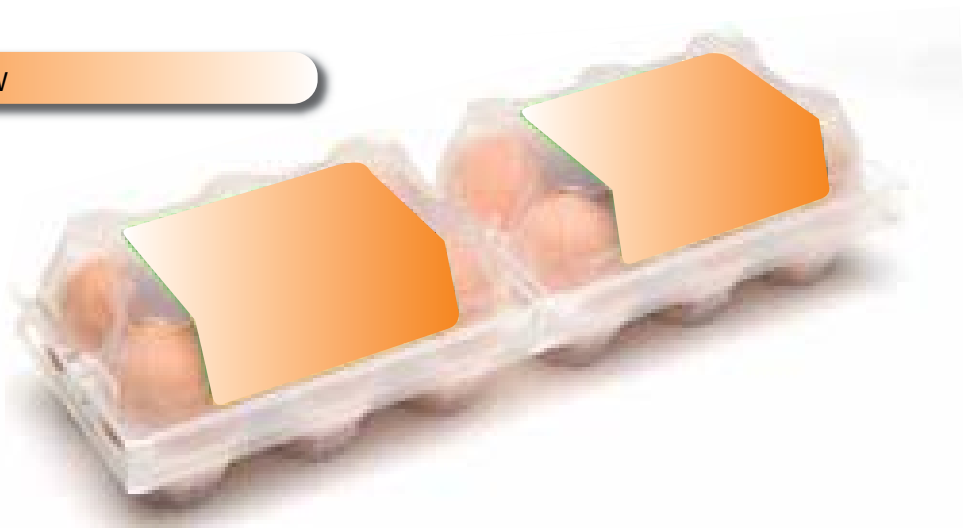
We can make design, moulds engineering and production of vacuum formed parts from PMMA or HIPS sheets. Screen or digital printing before forming is possible on inner or outer side.

This special parts are used in advertising industry as faces for light signs or displays.



# Vacuum formed egg-packs

SIDE VIEW W



FRONT VIEW W



Mouse-PS Ltd. produces egg-packs from polystyrene. We can offer you egg-packs with 2x6 and 1x10 eggs, in clear or milky white color.

Product Code: PEL26PSO

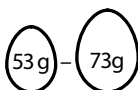
UNITS: 2

EGGS/UNIT: 6

MATERIAL: polystyrene 

PROCESSING: vacuum formed

CALIBER:



### LAYER STRUCTURE

3 Bags/Layer



### TRUCK LOADING

Pieces/Bag	330
Pieces/Pallet	7.920
Pallets/Truck	30
Pieces/Truck	237.600



### DECORATION



Label



Direct Print



### STORAGE

Palette Dimensions 1345 x 800 x 2490

max. 1 year



max. 1 pallet on top of the other



max. +40°C  
min. +10°C



Do NOT expose  
to sunlight

### BAG DIMENSIONS



790 x 440 x 295 mm (L x W x H)

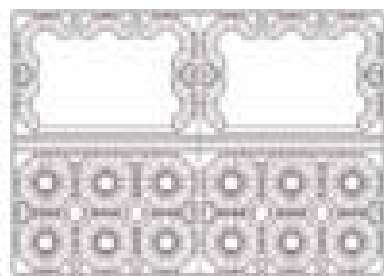
Net Weight (kg) 8,58

Bag Weight (kg) 0,11

Gross Weight (kg) 8,69

Volume Bag (m³) 0,103

### PACK DIMENSIONS



LABEL



220 mm

295 mm

102 mm

70 mm

60 mm

20 mm

100 mm

# Recycling and Environment

Nearly 28 years ago when we started our production we saw the enormous impact of plastics waste on the environment.

That's why we try to give another life to all our waste.

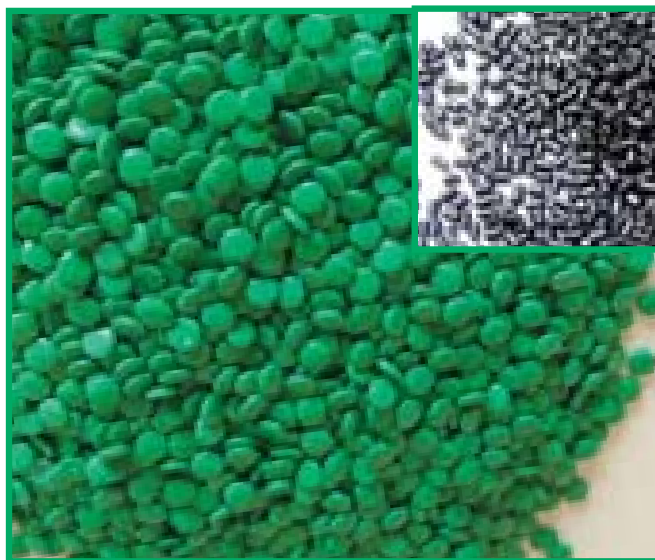
We developed a program for recycling. We introduced co-extrusion production in our factory and started taking back polystyrene and ABS waste from our customers to produce sheets using this technology.

The virgin material was co-extruded on top and bottom of the sheet with

recycled material in the middle of the sheet. This gives our customers cost-effective sheets with high quality surface.

We introduced a new recycling division for sorting, grinding, purification and granulation of industrial plastic waste. At the moment we are recycling and granulating a wide range of plastics: polypropylene, polyethylene, polystyrene, ABS, and we even found a way to put PMMA waste back into use.

Recycling of plastic waste reduces costs for our customers and at the same time decreases the amount of disposed waste. Our ambition is to continue to recycle material as much as possible in order to minimize the environmental impact of the planet.





We offer to our customers sorting, shredding, grinding and granulating of different plastics.







**p. 222**

13.1. SUNSHADE  
CONSTRUCTION



**p. 225**

13.4. TENSILE  
STRUCTURES



**p. 223**

13.2. AWNINGS WITH  
FALLING ARMS



**p. 226**

13.5. AWNINGS WITH  
VINYL FACE



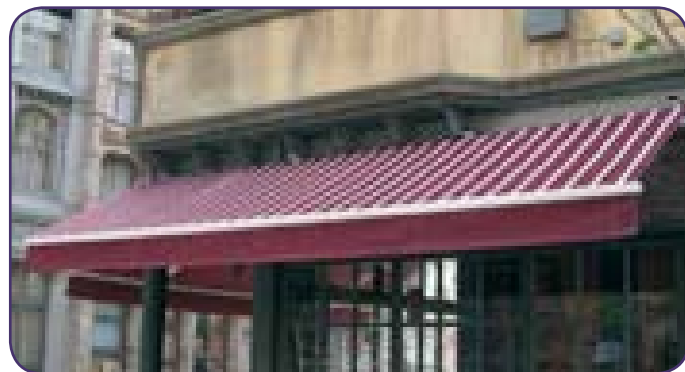
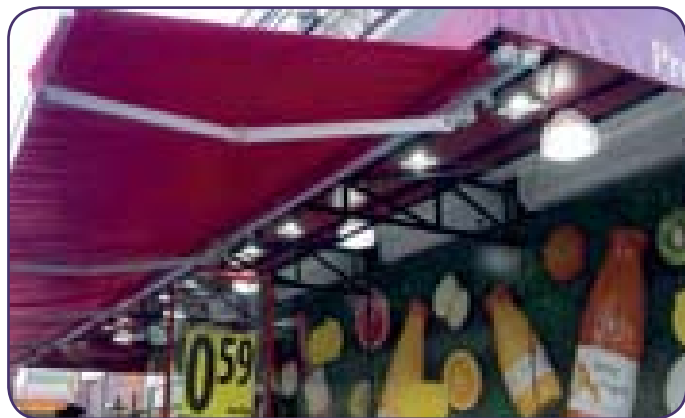
**p. 224**

13.3. AWNINGS TYPE  
CANOPY

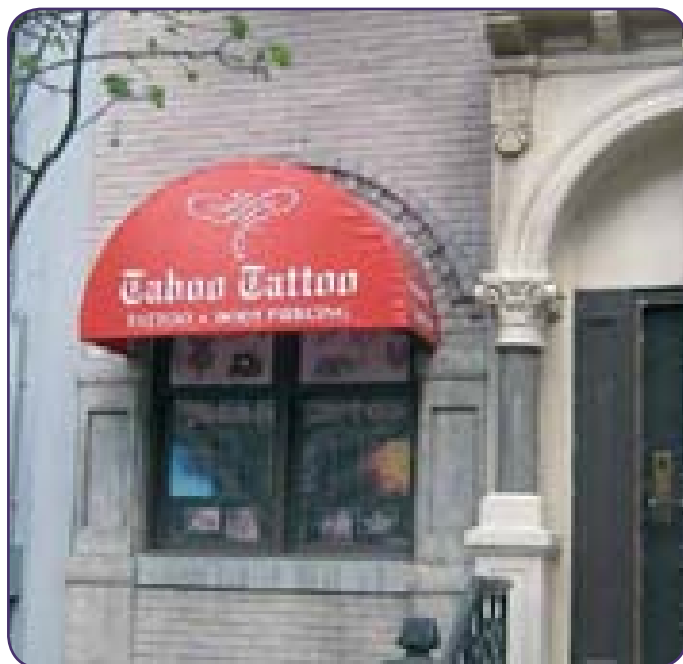


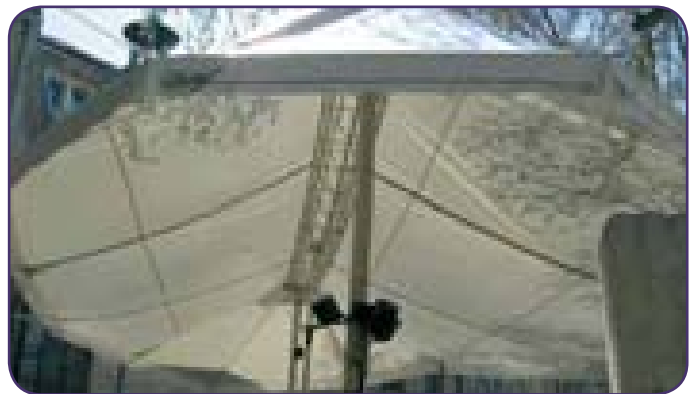
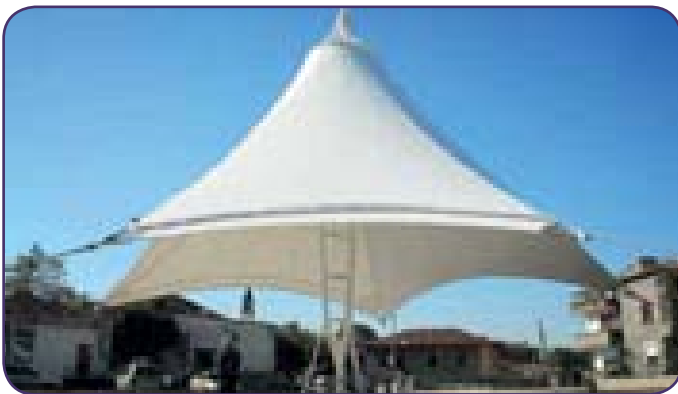
**p. 227**

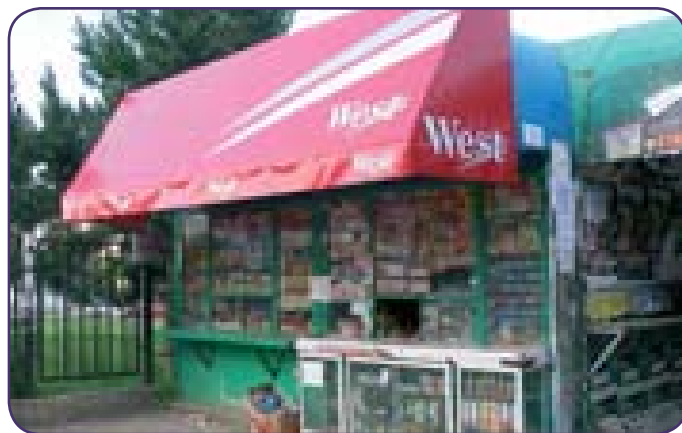
13.6. OTHER AWNINGS



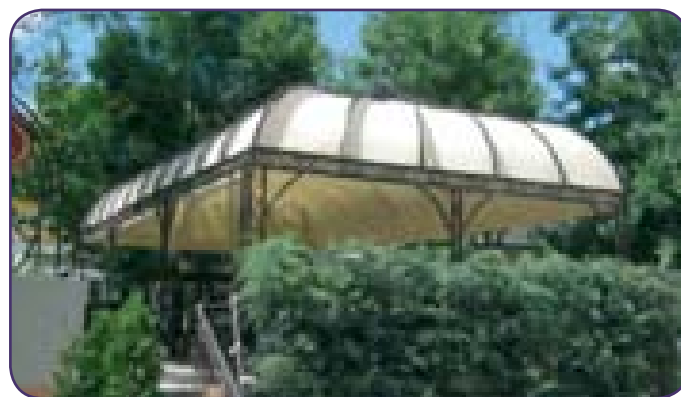
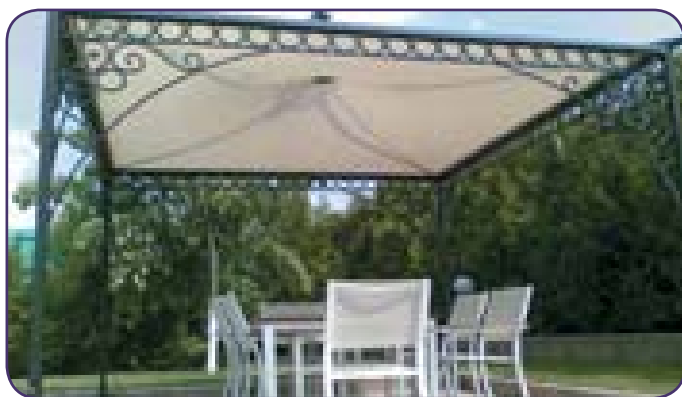
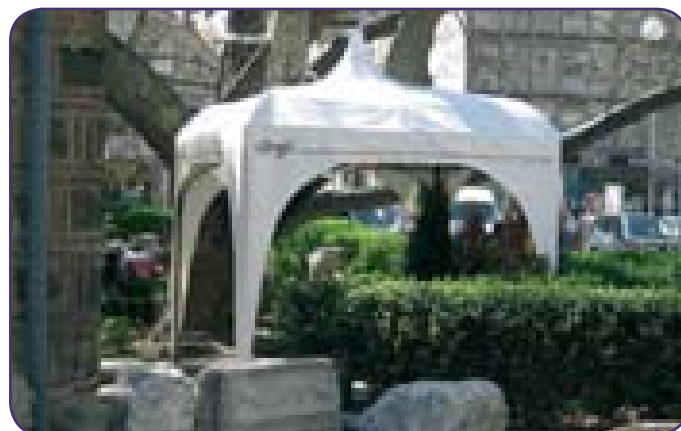
















**p. 230 - 231**

*14.1. TENTS*



**p. 235**

*14.6. SPECIAL COVERS*



**p. 232**

*14.2. WAREHOUSES*



**p. 236**

*14.7. SPECIAL ITEMS*



**p. 233**

*14.4. SPECIAL WIND/WATER PROTECTION WALLS*



**p. 23 - 239**

*14.8. BIG SIZE COVERS*



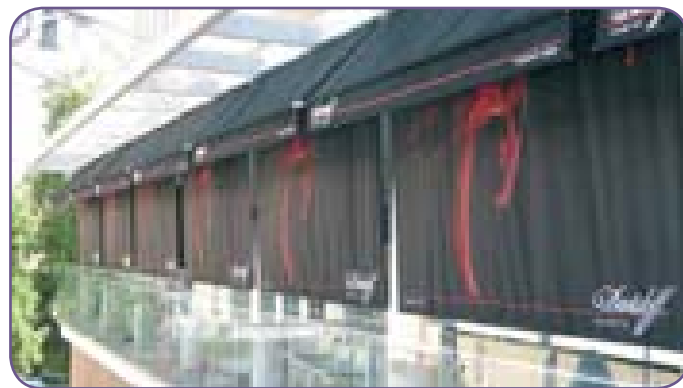
**p. 234**

*14.5. INFLATABLE PRODUCTS*





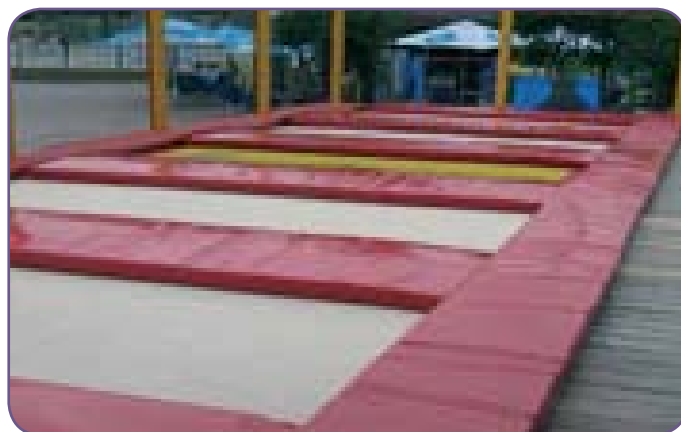
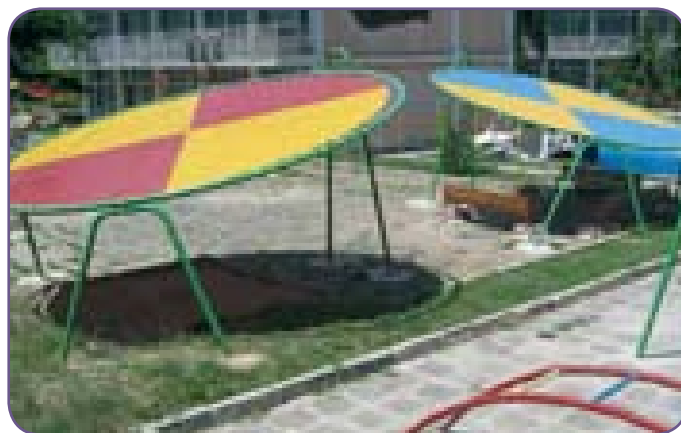






















**p. 242**

*15.1. TIR TARPAULINS*



**p. 243**

*15.2. COVERS FOR GONDOLAS  
AND HOPPERS*



**p. 243**

*15.3. COVERS FOR SMALL TRUCKS*







## 15.3. COVERS FOR SMALL TRUCKS



# TEXTILE FRAMES

**IT Investments**  
Investing in IT infrastructure  
to support business growth  
and drive operational excellence



**INVESTMENT: £270 MILLION  
FY2012 - FY2014**

**bek** INVESTING 1600 MILLION  
IN OUR FUTURE **bek**

**IT Investments**  
Investing in IT infrastructure  
to support business growth  
and drive operational excellence



**INVESTMENT: £20 MILLION  
FY2012 - FY2014**

**Branding**  
Investing in branding to  
support business growth  
and drive operational excellence



**INVESTMENT: £10 MILLION  
FY2012 - FY2014**

**Customer**  
Investing in customer service  
to support business growth  
and drive operational excellence



**INVESTMENT: £10 MILLION  
FY2012 - FY2014**

**Marketing Planning**  
Investing in marketing planning  
to support business growth  
and drive operational excellence



**INVESTMENT: £10 MILLION  
FY2012 - FY2014**

**Human Resources**  
Investing in human resources  
to support business growth  
and drive operational excellence



**INVESTMENT: £10 MILLION  
FY2012 - FY2014**

**IT Investments**  
Investing in IT infrastructure  
to support business growth  
and drive operational excellence

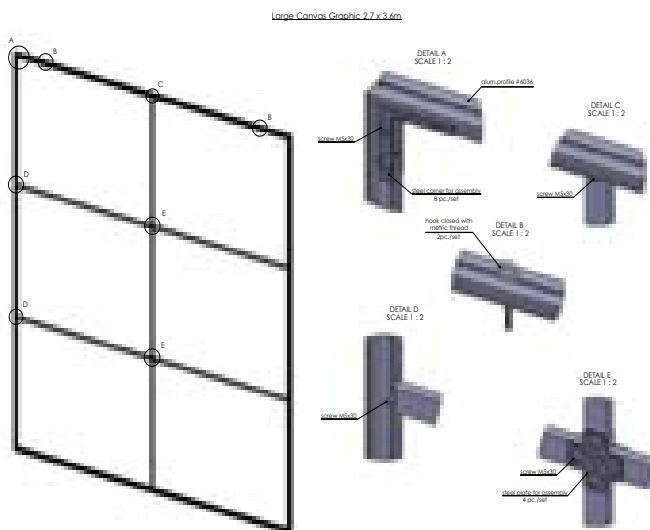
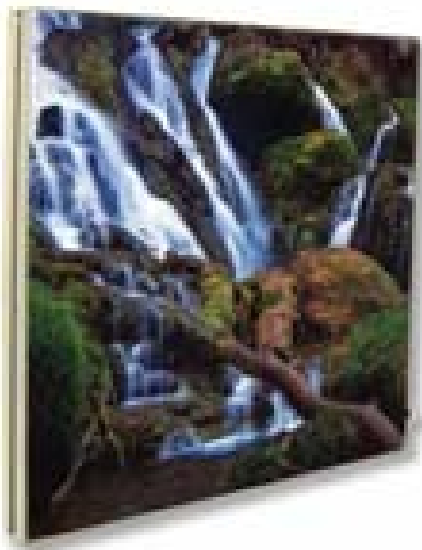


**INVESTMENT: £10 MILLION  
FY2012 - FY2014**



#### Technical specifications:

- \* Different sizes available on request
- \* Frame price include cutted on 45 degrees aluminium profiles and steel corners for assembling
- \* Textile price include digitally printed polyester fabric 210 gr/m<sup>2</sup>, sewed on all 4 sides clear PVC strip 14x3 mm
- \* Packing aluminium profiles is in plastic bag and carton box
- \* Packing textile is in plastic bag and carton box
- \* Packing when order is for aluminium profiles and textile is in ONE plastic bag and carton box



### Technical specifications:

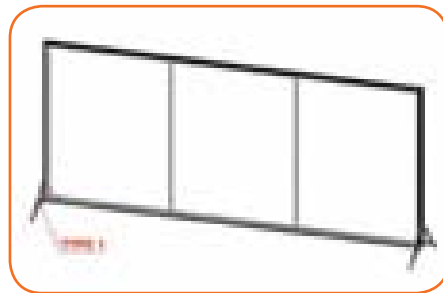
- \* Different sizes available on request
- \* Frame price include cutted on 45 degrees aluminium profiles and steel corners for assembling
- \* Textile price include digitally printed polyester fabric 210 gr/m<sup>2</sup>, sewed on all 4 sides clear PVC strip 14x3 mm
- \* Packing aluminium profiles is in plastic bag and carton box
- \* Packing textile is in plastic bag and carton box
- \* Packing when order is for aluminium profiles and textile is in ONE plastic bag and carton box



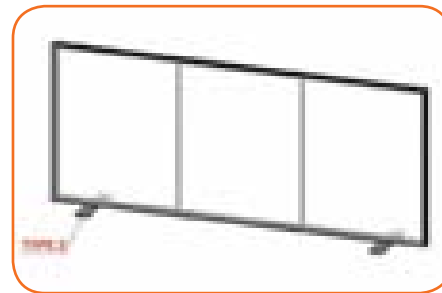
### Technical specifications:

- \* Different sizes available on request
- \* Frame price include cutted on 45 degrees aluminium profiles and steel corners for assembling
- \* Textile price include digitally printed polyester fabric 210 gr/ m2, sewed on all 4 sides clear PVC strip 14x3 mm
- \* Packing aluminium profiles is in plastic bag and carton box
- \* Packing textile is in plastic bag and carton box
- \* Packing when order is for aluminium profiles and textile is in ONE plastic bag and carton box

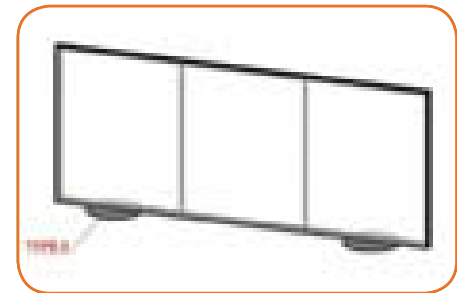
Feet Type 1



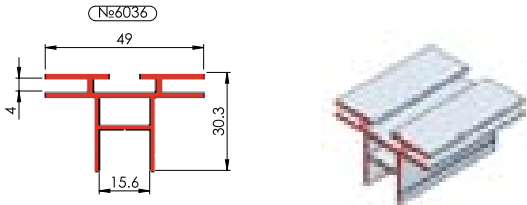
Feet Type 2



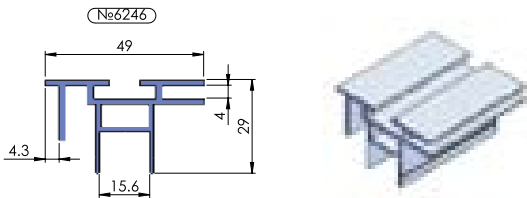
Feet Type 3



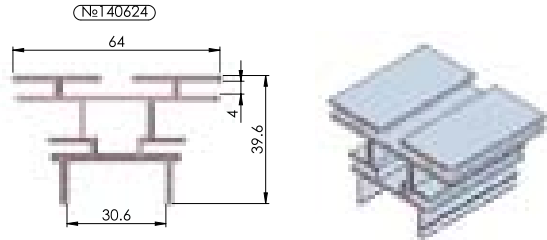
Profiles for not illuminated textile frames



Use - double side non illuminated textile frame with width 49mm

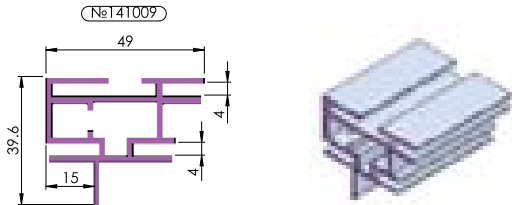


Use - a unilateral non illuminated textile frame with width 49 mm and back of etalbond



Use - double side non illuminated textile frame with width 64mm

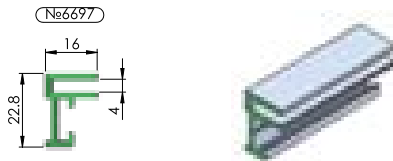
Profiles for not illuminated textile frames



Use - a unilateral non illuminated textile frame with width 49 mm for wall mounting

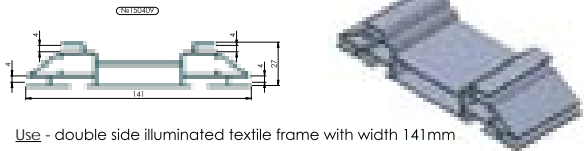


Use - for horizontal and vertical crossbar for manufacture of frames with profile 141009A



Use - a unilateral non illuminated textile frame with width 16mm for wall mounting

Profiles for illuminated textile frames

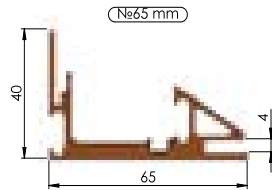


Use - double side illuminated textile frame with width 141mm

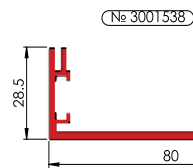
Examples assembling the corners of textile frames



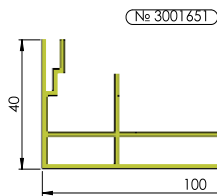
Profiles for illuminated textile frames



Use - a unilateral illuminated textile frame with width 65mm

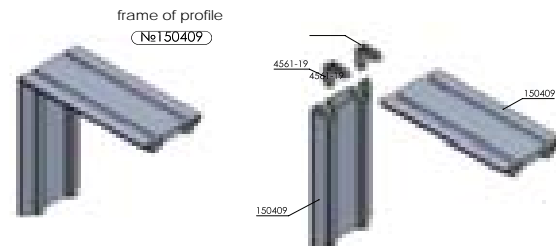


Use - a unilateral illuminated textile frame with width 80mm

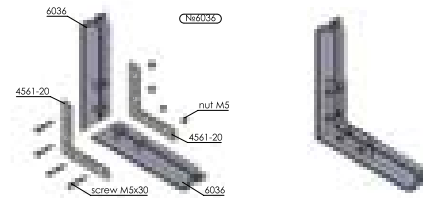


Use - a unilateral illuminated textile frame with width 100mm

Examples assembling the corners of textile frames

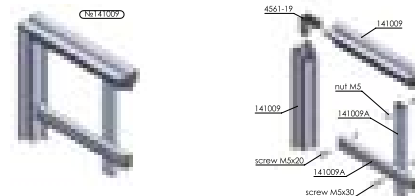


Examples assembling the corners of textile frames  
frame of profile



Note : Similarly assembled and textile frames from profile 6246

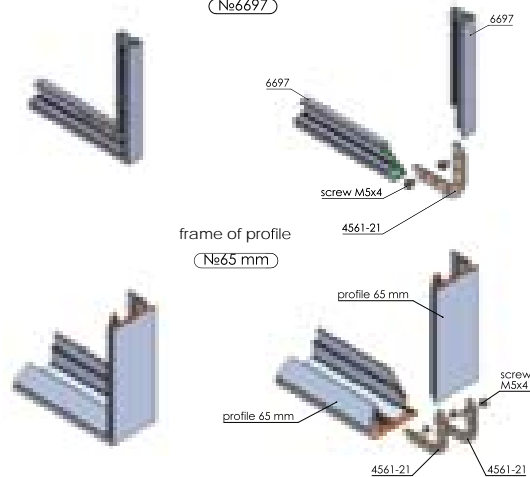
frame of profile



Examples assembling the corners of textile frames

frame of profile

№6697





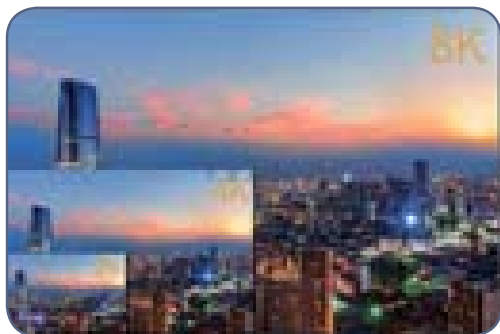
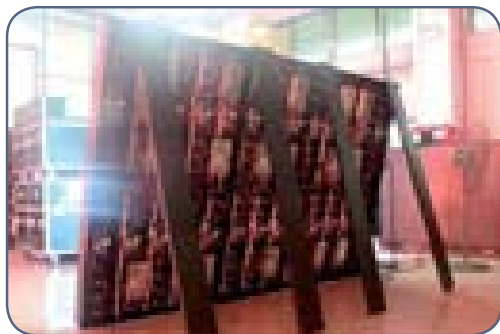
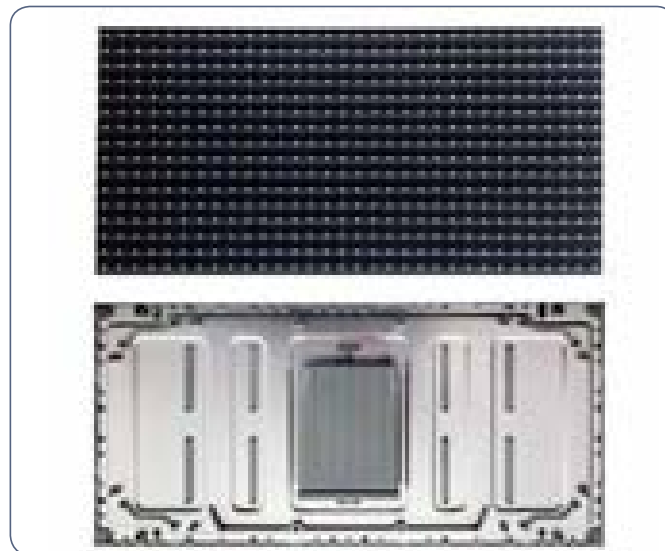




### 17.1 INDOOR FIXED LED DISPLAY

The LED displays are becoming the favorite way of presenting advertising and information contents in Shopping Malls, sportive and public places.

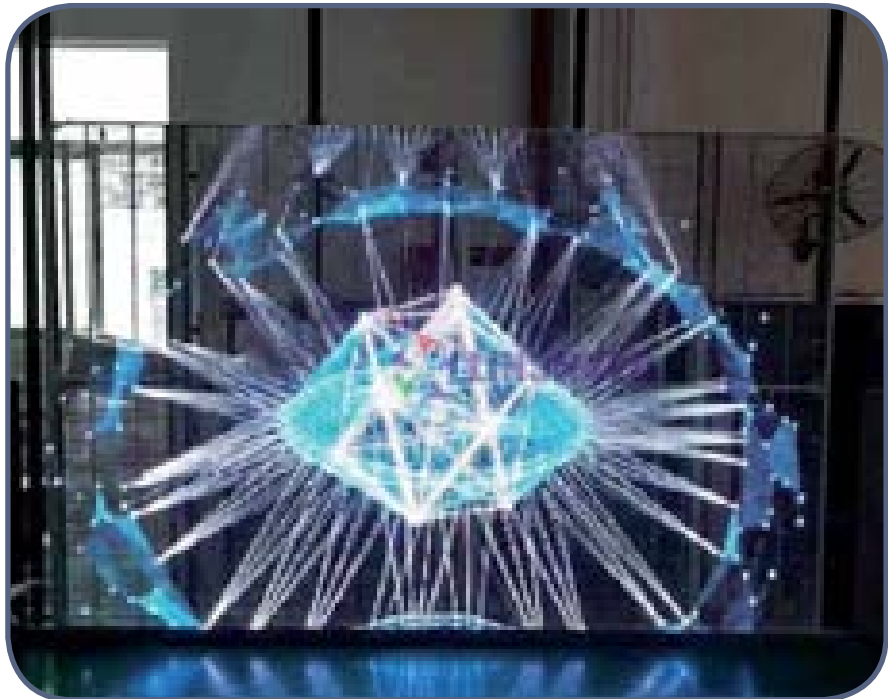
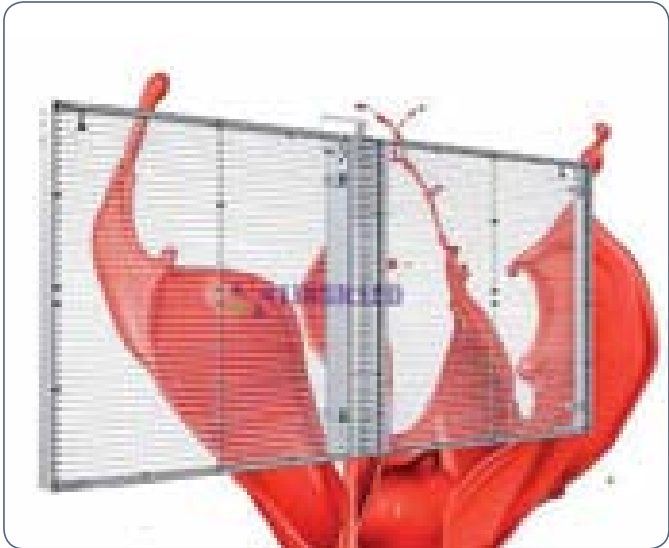
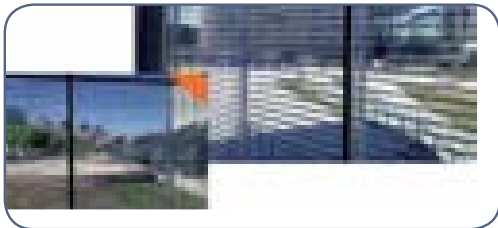
According to the customer's requirements, they can be configured with different size and resolution (Pitch).



## 17.2 TRANSPARENT LED DISPLAYS

Further development of the technology are the Transparent LED display.

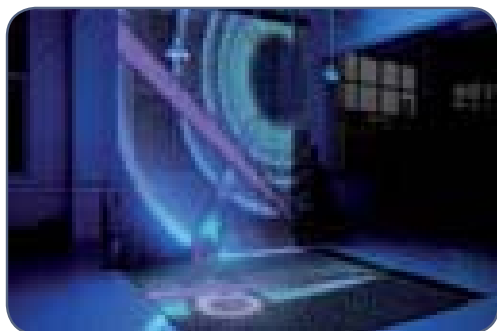
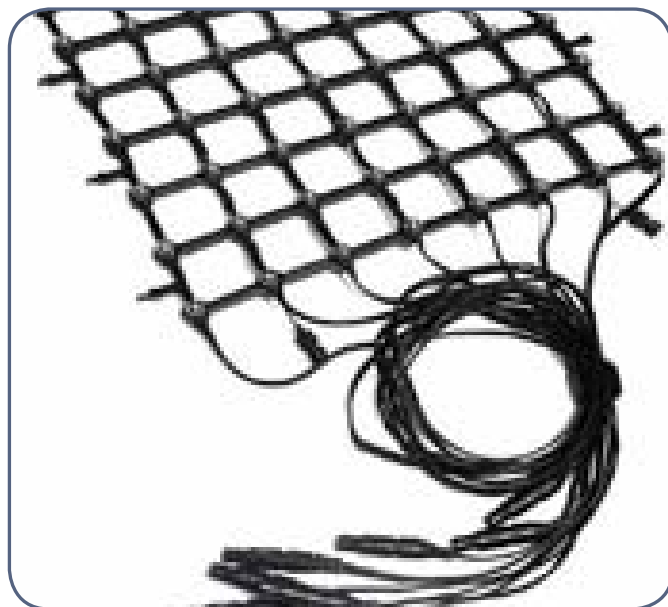
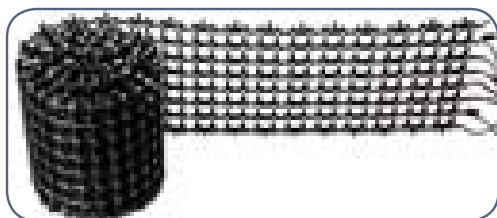
Thanks to their transparency, they don't divide the space, hence, they are very appropriate for shop windows, hanging in the Shopping Mall's galleries etc.



### 17.3 LED MESH CURTAIN SCREEN

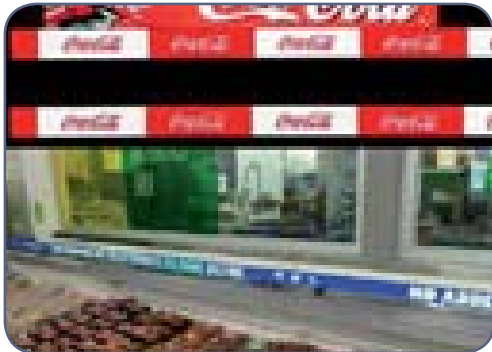
LED mesh curtains are the new media which turns in to screen large areas of interior or exterior of the buildings, concert stages etc. LED mesh is light, flexible and more affordable. They exists in few different pitch sizes.

This LED screens are easy for installation and programming.



## 17.4 TICKER-SUPERMARKET LED DISPLAY

The new model ticker LED display board is designed for the indoor led display application, like used on supermarket shelves, shopping mall show-cases, etc. These ultra-high quality image displays give visitors a very splendid ads attraction, which will bring more traffic and business opportunities to your store.



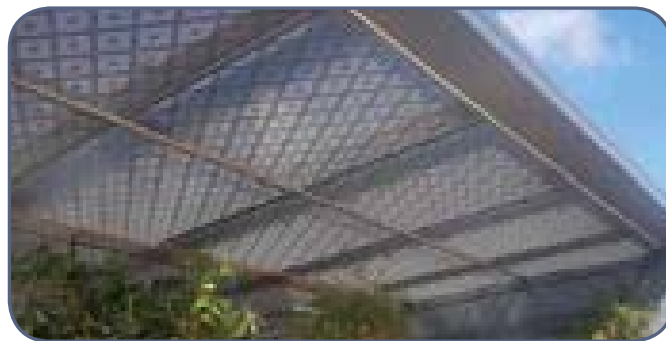
## 18.1 STEEL AND ALUMINIUM STRUCTURES

Using our high quality machines as lasers, routers, folding and welding machines and our powder coating line Mouse-PS Ltd start to produce different railings, fences and other products for buildings.

All structures can be hot dip or electro-galvanized before powder coating.

e-coating ( KTL ) of all steel parts is also possible, which guarantee good corrosion protection, equal layer thickness and final smooth surface after painting.

Many different perforated sheets can be produced by us.





Using our high quality machines as lasers, routers, folding and welding machines and our powder coating line Mouse-PS Ltd start to produce special panels with or without isolations for building facades

QUALICOAT and QUALISTEELCOAT certificates gives guarantee to our customer for reliable powder coating process.

With our new CLOOS 7 axis welding robot we have capacity and constant quality for all welded panels.









## 18.1. BROWN KRAFT PAPER



## 18.2. FLAT AND TWISTED PAPER HANDLES



## 18.3. WHITE KRAFT PAPER



## 18.4. MATT AND GLOSS LAMINATION

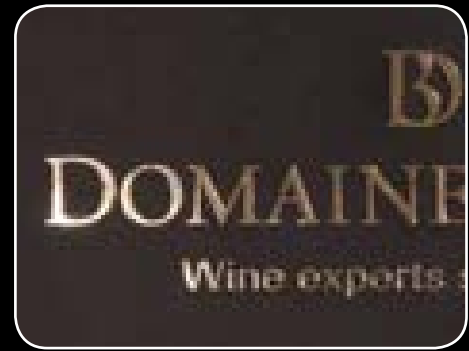




SPOT UV VARNISH



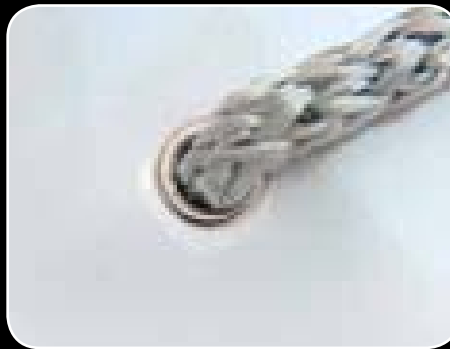
SILVER HOT FOIL



GOLD HOT FOIL



RELIEF EMBOSSING



EYELETS



SLITS



KNOTS



TWISTED PAPER HANDLS

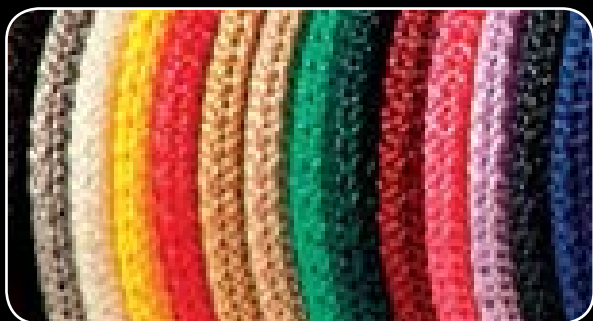


FLAT PAPER HANDLES



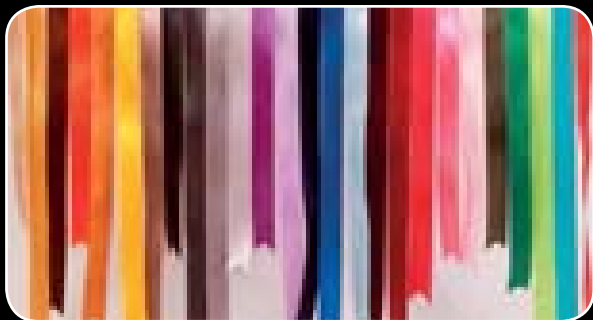
### COTTON Ropes

To your attention here we present **18 different rope colours**. Made of cotton threads and in 6mm diameter. Following the rainbow from left to right: black, dark gray, light gray, white, light yellow, yellow, orange, beige, brown, bordeaux, red, light green, dark green, magenta, pink, dark blue, royal blue, turquoise.



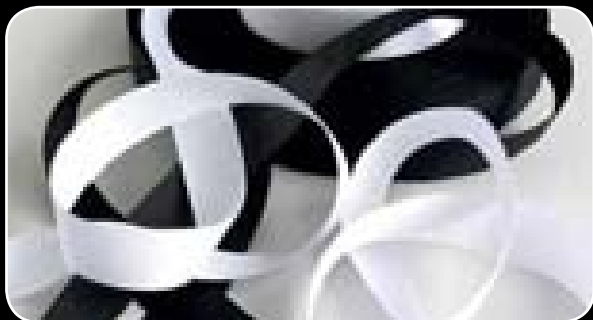
### POLYPROPYLENE Ropes

Made of polypropylene material in 6mm diameter we offer **14 different rope colours**. Arranged here from left to right as follows: black, silver, white, yellow, red, gold, beige, light green, dark green, bordeaux, pink, light purple, dark blue, royal blue.



### SATIN Ribbons

Double sided satin ribbons in 20mm width. Available in **27 different colours**.



### GROSGRAIN Ribbons

Double sided satin grosgrain ribbons again in 20mm width. Available in **black and white**.



OUR CUSTOMERS

## BULGARIA

**SOFIA PLANT - Sofia 1220, complex Voenna Rampa, 3, prof Ivan Georgov str.**

**BOTEVGRAD PLANT - Botevgrad 2140, 1, Industrialna Str.**

**phone: +359 2 4412 500**

**[www.mouse-ps.com](http://www.mouse-ps.com)**



## **BULGARIA**

**SOFIA PLANT** - Sofia 1220, complex Voenna Rampa,  
3, prof Ivan Georgov str.

**BOTEVGRAD PLANT** - Botevgrad 2140, 1, Industrialna Str.

phone: +359 2 4412 500

[www.mouse-ps.com](http://www.mouse-ps.com)