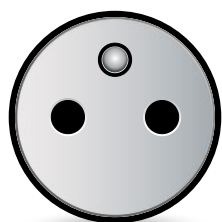


FANTON

ELECTRICAL
MATERIAL



FRENCH STANDARD
CATALOGUE 2020



CERTIFICATIONS FANTON®



FANTON[®]
ELECTRICAL EQUIPMENT FACTORY

“FOCUSING
IN OUR KNOW
HOW IS
THE BEST WAY
TO IMPROVE.”

Fanton Family



RESEARCH AND DEVELOPMENT

In-house engineering

From the accurate concept development process to the engineering stages: everything is strictly monitored by the staff of Fanton in-house R&D department, who is daily committed to the development of new innovative and functional products.

In its over-50-year history, the company Fanton has become a leader in the production of electrical material.



Prototyping

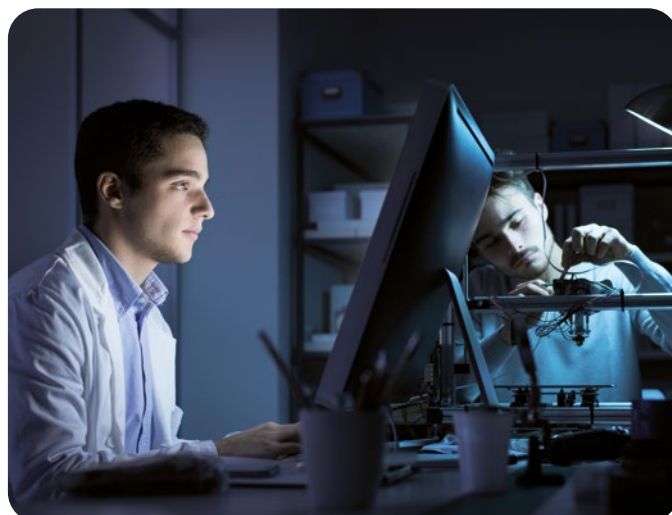
From the concept to the functional prototyping: thanks to sophisticated prototyping technologies, intuitions are made concrete and become new products, matching the modern market demands.



In-house test laboratory

After strict quality control inspections, IMQ gave the authorisation to Fanton in-house laboratory to certify the compliance of the material to the standards, ensuring the highest safety and resistance parameters.

A constant and complete monitoring of the production processes, from the incoming to the outgoing material, guarantees each product before its placing on the market.



PRODUCTIONS AND KNOW-HOW



Prints made with selected high quality technopolymer



Contactor made in the company with high precision

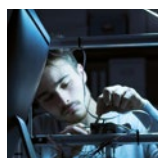


Assembly

The success of the brand Fanton comes from the high quality of a Made in Italy product: each component and each assembly process is carried on by qualified personnel, according to processes certified by UNI EN ISO 9001:2015. The final test before each shipment guarantees the highest satisfaction of our customers.



SUMMARY



RESEARCH AND DEVELOPMENT

2



PRODUCTIONS AND KNOW-HOW

3



QUICK GUIDE

4-5



MULTI-SOCKETS "FIDO"

6

MULTI-SOCKETS 4 OUTLETS

8

MULTI-SOCKETS 6 OUTLETS

9



MULTI-SOCKETS "MODULA"

10

MULTI-SOCKETS MODULA

11



CABLE REELS "PROFESSIONAL USE"

12

EMPTY CABLE REELS

13

SOCKET DISC

13

GOLIA METAL CABLE REELS

14

SERIE GARDEN

14

PUMA CABLE REELS

15

ONDA CABLE REELS

15

GOLIA THERMOPLASTIC CABLE REELS

15

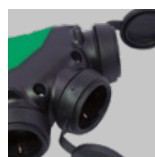


CABLE REEL "INDUSTRIAL USE"

16

GOLIA METAL CABLE REELS

17



PLUGS, SOCKETS "PROFESSIONAL USE"

18

HI-PRO SERIES FOR PROFESSIONAL USE

20

MULTI-SOCKETS PVC 4 SOCKETS

20



DOMESTIC PLUGS

21

PLUGS AND ADAPTOR

22

EXTENSIBLE PATCH CORDS

23



CEE ADAPTORS "PROFESSIONAL USE"

24

CEE INDUSTRIAL ADAPTORS

25



CEE PLUG CONVERTER "OPTIMUS"

26

PLUG CONVERTER "OPTIMUS"

27

QUICK GUIDE

CODE	PAGE	CODE	PAGE	CODE	PAGE	CODE	PAGE
01350FR	15	14569FR	14	420210FR	9	80076	22
01351FR	15	14610FR	15	4202101FR	9	81034	20
01908	13	40655	11	4202102FR	9	81035	20
10196	14	40656	11	4202103FR	9	81085	22
10220FR	15	40675	11	420220FR	9	90110	23
10221FR	15	40676	11	420230FR	9	90111	23
10223FR	15	420100FR	8	42040FR	20	90130	23
10224FR	15	4201001FR	8	42041FR	20	90131	23
10228FR	15	4201002FR	8	73001	25	90140	23
10228UG	13	4201003FR	8	73020	27	90141	23
10229FR	15	420110FR	8	73020-E	27	90150	23
10229UG	13	4201101FR	8	73109	25	90151	23
12209FR	14	4201102FR	8	73115	25	90190	23
12209UG	13	4201103FR	8	73117	25	90191	23
14302FR	14	420120FR	8	73126	25	90290	23
14386	17	420130FR	8	80000	22	90291	23
14387	17	4201502FR	8	80001	22	92954	25
14390UG	13	4201503FR	8	80005	22	92955	25
14560FR	14	420170FR	8	80006	22	92992	20
14561FR	14	420200FR	9	80052	20	92996	20
14563FR	14	4202001FR	9	80070	22		
14564FR	14	4202002FR	9	80071	22		
14565FR	14	4202003FR	9	80075	22		

Fido



Multi-sockets

Fido

The new Fido multi-sockets stand out immediately because of their elegant appearance.

This exclusive patented Fanton design's main attraction is the innovative "Adjustable cable" system that holds the power supply cable in the best position and always in order.

Fido multi-sockets are made up of polycarbonate; their design goes hand-in-hand with Fanton technology, with highly practical solutions such as opening the terminal space by means of 2 screws concealed on the rear, or the USB sockets for charging electronic equipment. All of this with Made in Italy quality and safety that Fanton guarantees for all its products.



Available with or without cables, in various versions, from 4 to 6 sockets, as well as USB ports.

MADE IN
ITALY

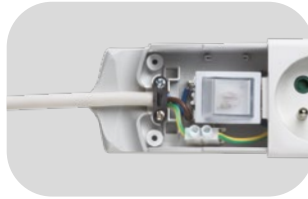


An attractive range that fits in perfectly with contemporary interior design.

MADE IN ITALY



The innovative, exclusive, patented system that allows the cable to be positioned in an orderly manner, reducing clutter.



The terminal space is opened by unscrewing the screws on the rear allowing trouble-free replacement or installation of the power supply cable. Once wiring has been done, no screws are in sight on the front of the multi-socket.



The multi-sockets are also available with two 2,1A USB sockets for charging smartphones, tablets, iPads, and any other electronic equipment.



Wall mounting or fixing using self-locking clamps.



No oxidation, no wearing out. Long life.

PLUS PACK



EURO HANG HOLE
Easy hanging up on hooks.

TRANSPARENT BAG
Product in plain view.



ILLUSTRATED CARDBOARD
Nice presentation of the product. The plug is clearly visible.



SYMBOLS

Intuitive communication of benefits.



FIDO FRENCH STD - 4 OUTLETS



MADE IN ITALY



420130FR



4201002FR



420120FR



4201002FR



420170FR



4201502FR

WITHOUT CABLE

Code	Outlets	Socket Type	Cable	Section mm ²	Colour	Single Package	Packing Unit	
420130FR	4	2P+E 16A, French std	—	—	white	Shrink film	12	

WITH CABLE

Code	Outlets	Socket Type	Cable	Section mm ²	Colour	Single Package	Packing Unit	
4201102FR	4	2P+E 16A, French std	1,5 m	3G1,50	white	Shrink film	12	CE
4201103FR	4	2P+E 16A, French std	3 m	3G1,50	white	Shrink film	12	CE
420110FR	4	2P+E 16A, French std	1,5 m	3G1	white	Shrink film	12	CE
4201101FR	4	2P+E 16A, French std	3 m	3G1	white	Shrink film	12	CE

WITHOUT CABLE + LUMINOUS SWITCH

Code	Outlets	Socket Type	Cable	Section mm ²	Colour	Single Package	Packing Unit	
420120FR	4	2P+E 16A, French std	—	—	white	Shrink film	12	

WITH CABLE + LUMINOUS SWITCH

Code	Outlets	Socket Type	Cable	Section mm ²	Colour	Single Package	Packing Unit	
4201002FR	4	2P+E 16A, French std	1,5 m	3G1,50	white	Shrink film	12	CE
4201003FR	4	2P+E 16A, French std	3 m	3G1,50	white	Shrink film	12	CE
420100FR	4	2P+E 16A, French std	1,5 m	3G1	white	Shrink film	12	CE
4201001FR	4	2P+E 16A, French std	3 m	3G1	white	Shrink film	12	CE

WITHOUT CABLE + LUMINOUS SWITCH
+ 2 X USB OUTLETS 2,1A

Code	Outlets	Socket Type	Cable	Section mm ²	Colour	Single Package	Packing Unit	
420170FR	4	2P+E 16A, French std	—	—	white	Shrink film	12	CE

WITH CABLE + LUMINOUS SWITCH
+ 2 X USB OUTLETS 2,1A

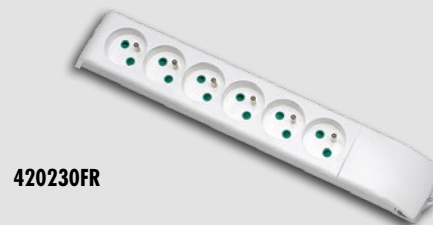
Code	Outlets	Socket Type	Cable	Section mm ²	Colour	Single Package	Packing Unit	
4201502FR	4	2P+E 16A, French std	1,5 m	3G1,50	white	Shrink film	12	CE
4201503FR	4	2P+E 16A, French std	3 m	3G1,50	white	Shrink film	12	CE

FIDO FRENCH STD - 6 OUTLETS



WITHOUT CABLE

Code	Outlets	Socket Type	Cable	Section mm ²	Colour	Single Package	Packing Unit	
420230FR	6	2P+E 16A, French std	—	—	white	Shrink film	12	



420230FR

WITH CABLE

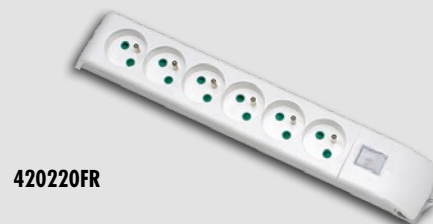
Code	Outlets	Socket Type	Cable	Section mm ²	Colour	Single Package	Packing Unit	
4202102FR	6	2P+E 16A, French std	1,5 m	3G1,50	white	Shrink film	12	CE
4202103FR	6	2P+E 16A, French std	3 m	3G1,50	white	Shrink film	12	CE
420210FR	6	2P+E 16A, French std	1,5 m	3G1	white	Shrink film	12	CE
4202101FR	6	2P+E 16A, French std	3 m	3G1	white	Shrink film	12	CE



4202102FR

WITHOUT CABLE + LUMINOUS SWITCH

Code	Outlets	Socket Type	Cable	Section mm ²	Colour	Single Package	Packing Unit	
420220FR	6	2P+E 16A, French std	—	—	white	Shrink film	12	



420220FR

WITH CABLE + LUMINOUS SWITCH

Code	Outlets	Socket Type	Cable	Section mm ²	Colour	Single Package	Packing Unit	
4202002FR	6	2P+E 16A, French std	1,5 m	3G1,50	white	Shrink film	12	CE
4202003FR	6	2P+E 16A, French std	3 m	3G1,50	white	Shrink film	12	CE
420200FR	6	2P+E 16A, French std	1,5 m	3G1	white	Shrink film	12	CE
4202001FR	6	2P+E 16A, French std	3 m	3G1	white	Shrink film	12	CE



4202002FR

AVAILABLE WITH DIFFERENT CABLE LENGTHS UPON REQUEST



Multi-sockets

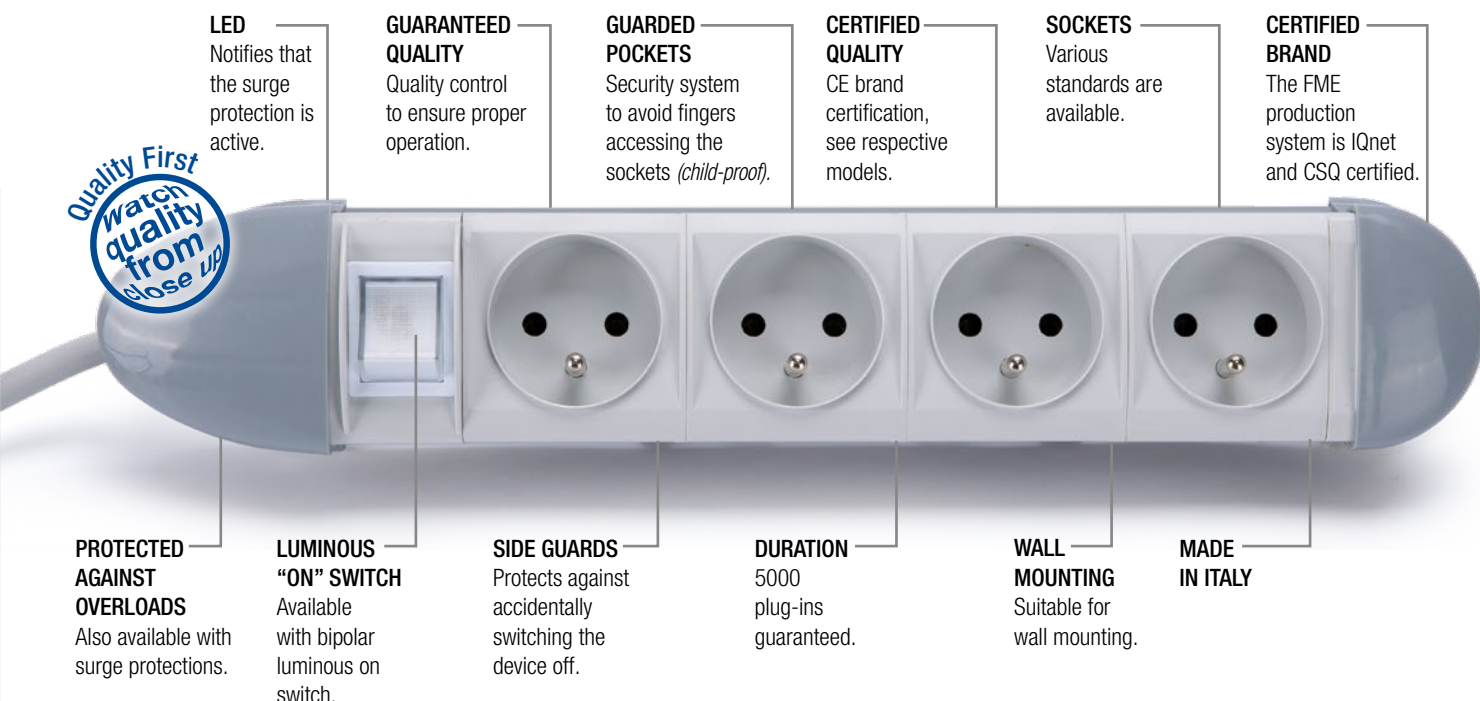
modula

FME multi-sockets provide you with energy and safety. Resulting from a meticulous design project, our multi-sockets reveal refined design and innovative, long-lasting and safe technical solutions, also with a wall-mounting option. FME brand multi-sockets are a top-of-the-range Made in Italy product. The choice of materials, the strict tests required during the production phases and the guarantee of a leading brand in its sector, testify to the undeniable quality of these products.

FME multi-sockets are a must whenever an additional number of sockets is required with a practical and safe solution.



TECHNICAL CHARACTERISTICS



GENERAL SPECIFICATIONS

- Manufactured in compliance NF C61-314.
- Suitable for use at home (TV, video recorders, HI-FI, computers), in shops and offices.
- Body manufactured in thermoplastic material provides high mechanical resistance.
- Double insulation certified <HAR> H05VV-F cable, blocked in the body by means of a tear-proof cable clamp fixed with screws.
- Die-cast plug-in certified PVC 2P+E 16A with protected pins.
- Sockets with pockets shielded against accidental and voluntary contact.

- Projecting fins enable easy wall mounting, if required.

OVERLOAD PROTECTION

- This mechanism protects connected equipment from network overloads due to external forces (discharges) or internal agents (operation of machinery equipped with electrical motors) up to max. 30J, when the voltage exceeds 650V having a discharge capacity of 1.2kA (8/20ms).
- Especially suitable to protect TVs, video-recorders, HI-FIs, computers, cash registers, faxes, copying machines, industrial and laboratory instruments, etc.

- The overload discharge element is protected by a quick-replacement 4A fuse. Protection is activated when the LED is on. When the LED is off, replace the fuse making sure that the plug is not in the socket. In any case, if the LED is off, the product will still function as a traditional multi-socket.

WARNING

- Not to be used outdoors.
- Do not exceed the maximum overload power stated on each item.
- Regularly perform a visual check to assess the conditions of cable, plugs and sockets.

MODULA MULTI-SOCKETS



MADE IN ITALY

Code	Outputs	Socket Type	Cable	Cable mm ²	Single Package	Packing Unit	
40655	4	2P+E 250V 16A French std. - Luminous switch Plug 2P+E 16A French std.	1,5 m	3G1,50	Bag	12	CE
40656	4	2P+E 250V 16A French std. - Overload protection Luminous switch Plug 2P+E 16A French std.	1,5 m	3G1,50	Bag	6	CE

Code	Outputs	Socket Type	Cable	Cable mm ²	Single Package	Packing Unit	
40675	6	2P+E 250V 16A French std. - Luminous switch Plug 2P+E 16A French std.	1,5 m	3G1,50	Bag	12	CE
40676	6	2P+E 250V 16A French std. - Overload protection Luminous switch Plug 2P+E 16A French std.	1,5 m	3G1,50	Bag	6	CE



45655



45675



Series for **PROFESSIONAL USE**

Cable reels

Fanton cable reels are suitable for outdoor use, even at low temperature, and ensure durability. They are equipped with galvanised steel tube, cable holder and high resistance metal or thermoplastic body.

It is easy to personalize and create your special Fanton cable reel: choose one empty cable reel from the wide range and match it with the sockets disc.





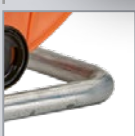
CABLE HOLDER*

all the cable reels are supplied with an accessory which helps to keep the plug fixed and makes the transport easier.



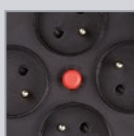
REEL BODY

made of METAL or of special THERMOPLASTIC with a strong structure. Both shock-absorbing drums are resistant to high/low temperature.



GALVANISED STEEL TUBE

the thick steel and the zinc coated processes protect the tube from corrosion and weathering.



REPLACEABLE DISC*

In case of damage or change, you may easily replace the disc.



14390UG

Empty cable reel Golia Metal
diam. 320 mm
metal stand - metal drum
blank diam. 205 mm socket disc
without cable

Colour	Single Package	Packing Unit
Metal	Bag	3



12209UG

Empty cable reel Golia trailer-mounted
diam. 420 mm
metal stand - thermoplastic drum
blank diam. 205 mm socket disc
without cable

Colour	Single Package	Packing Unit
Orange	Box	1



10228UG

Empty cable reel Golia Thermoplastic
diam. 260 mm
metal stand - thermoplastic drum
blank diam. 205 mm socket disc
without cable

Colour	Single Package	Packing Unit
Black	Bag	3

10229UG

Empty cable reel Golia Thermoplastic
diam. 320 mm
metal stand - thermoplastic drum
blank diam. 205 mm socket disc
without cable

Colour	Single Package	Packing Unit
Black	Bag	3

DISC 4 OUTLETS

Ø 145mm + Thermal cut out
+ Flange for Ø 205mm Discs



MADE IN
ITALY

Code	Socket Type	Colour	Single Package	Packing Unit	
01908	2P+E16A, French std, IP40	black	bag	3	CE

01908



CABLE REELS FRENCH STD - 4 OUTLETS



MADE IN ITALY



14561FR



14569FR



12209FR



10196

GOLIA METAL

Metal stand - metal drum

Ø 145mm socket disc + thermal cut out - Ø 205mm adaptor

Code	Length	Section mm ²	Cable Type	Ø Drum	Sockets	Colour	Single Package	Packing Unit	
14560FR	25 m	3G1,5	H05VV-F	320 mm	2P+E 16A, French std, IP40	metal	box	1	CE
14561FR	50 m	3G1,5	H05VV-F	320 mm	2P+E 16A, French std, IP40	metal	box	1	CE
14563FR	25 m	3G2,5	H05VV-F	320 mm	2P+E 16A, French std, IP40	metal	box	1	CE
14564FR	40 m	3G2,5	H05VV-F	320 mm	2P+E 16A, French std, IP40	metal	box	1	CE
14565FR	25 m	3G2,5	H07RN-F	320 mm	2P+E 16A, French std, IP40	metal	box	1	CE
14302FR	40 m	3G2,5	H07RN-F	320 mm	2P+E 16A, French std, IP40	metal	box	1	CE

GOLIA METAL

Metal stand - metal drum

Ø 145mm socket disc + thermal cut out - Ø 205mm adaptor
WITHOUT CABLE

Code	Length	Section mm ²	Cable Type	Ø Drum	Sockets	Colour	Single Package	Packing Unit	
14569FR	—	—	—	320 mm	2P+E 16A, French std, IP40	metal	bag	3	CE

GOLIA TRAILER-MOUNTED

Metal stand - trailer-mounted thermoplastic drum

Ø 145mm socket disc + thermal cut out - Ø 205mm adaptor
WITHOUT CABLE

Code	Length	Section mm ²	Cable Type	Ø Drum	Sockets	Colour	Single Package	Packing Unit	
12209FR	—	—	—	420 mm	2P+E 16A, French std, IP40	orange	box	1	CE

SERIE GARDEN

Metal stand thermoplastic drum

Code	Length m	Section mm ²	Cable Type	Ø Drum	Plug and socket	Colour	Single Package	Packing Unit	
10196	25	2x1,5	H05VV-F	260 mm	2P 16A, French/German std	black	Box	1	CE

CABLE REELS FRENCH STD - 4 OUTLETS



PUMA

Ø 245mm socket disc + thermal cut out

Code	Length	Section mm ²	Cable Type	Ø Drum	Sockets	Colour	Single Package	Packing Unit	
01350FR	15 m	3G1,5	H05VV-F	420 mm	2P+E 16A, French std, IP40	grey	box	3	CE
01351FR	20 m	3G1,5	H05VV-F	420 mm	2P+E 16A, French std, IP40	grey	box	3	CE

01350FR



ONDA

Ø 195mm socket disc + thermal cut out

Code	Length	Section mm ²	Cable Type	Ø Drum	Sockets	Colour	Single Package	Packing Unit	
14610FR	15 m	3G1,5	H05VV-F	420 mm	2P+E 16A, French std, IP40	green	—	4	CE

14610FR



GOLIA THERMOPLASTIC

Metal stand - thermoplastic drum

Ø 145mm socket disc + thermal cut out

Code	Length	Section mm ²	Cable Type	Ø Drum	Sockets	Colour	Single Package	Packing Unit	
10220FR	25 m	3G1,5	H05VV-F	260 mm	2P+E 16A, French std, IP40	black	box	1	CE
10221FR	50 m	3G1,5	H05VV-F	320 mm	2P+E 16A, French std, IP40	black	box	1	CE
10223FR	25 m	3G1,5	H07RN-F	260 mm	2P+E 16A, French std, IP40	black	box	1	CE
10224FR	50 m	3G1,5	H07RN-F	320 mm	2P+E 16A, French std, IP40	black	box	1	CE

10220FR



GOLIA THERMOPLASTIC

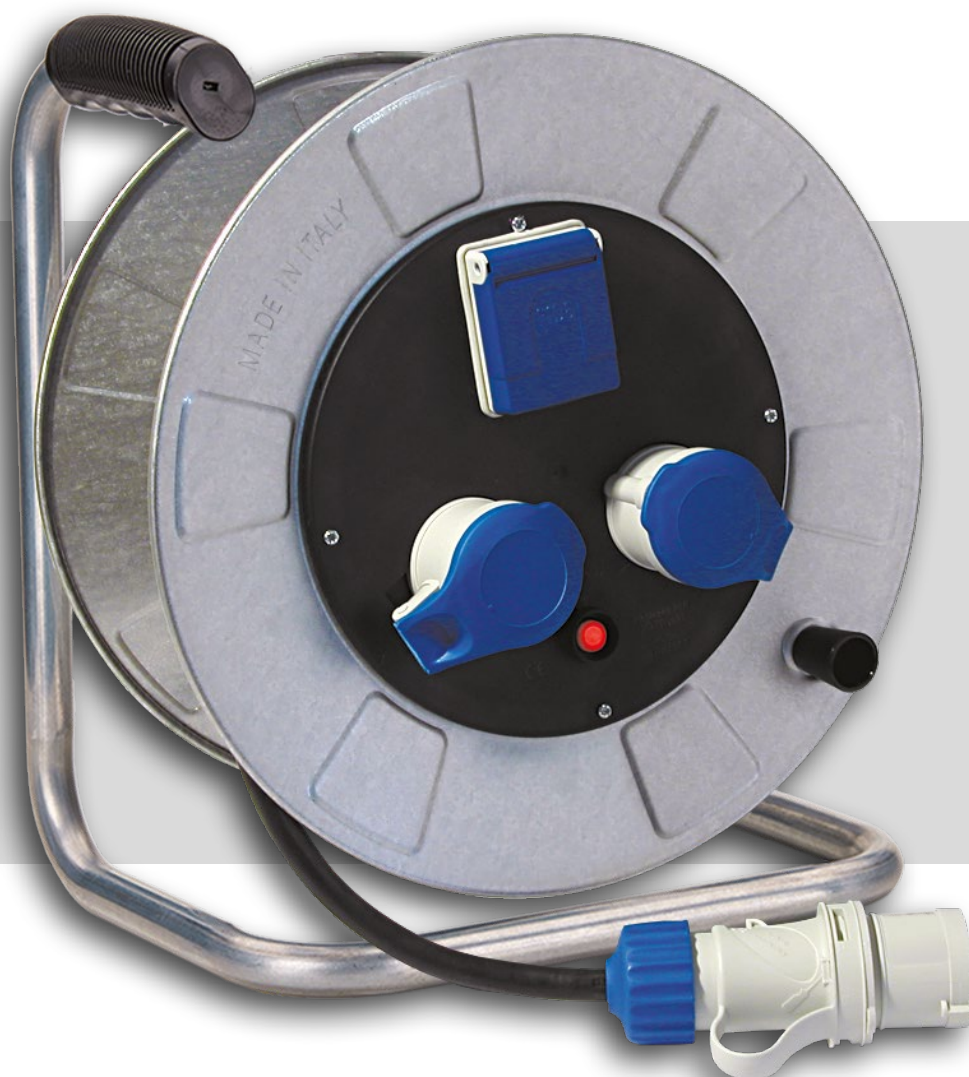
Metal stand - thermoplastic drum

Ø 145mm socket disc + thermal cut out
without cable

Code	Length	Section mm ²	Cable Type	Ø Drum	Sockets	Colour	Single Package	Packing Unit	
10228FR	—	—	—	260 mm	2P+E 16A, French std, IP40	black	bag	3	CE
10229FR	—	—	—	320 mm	2P+E 16A, French std, IP40	black	bag	3	CE

10228FR





Series for **INDUSTRIAL USE**

Cable reels

Fanton industrial cablereels are equipped with industrial and French standard sockets, as guarantee of high usage flexibility. In all versions the power supply is drawn by a 3- or 5-poles CEE plug and the IP44 protection degree is always guaranteed. The mechanical safety of the cablereels is assured by solid metallic or thermoplastic flanges; the electrical safety is provided by thermal cutoff with automatic unhooking and manual reset.

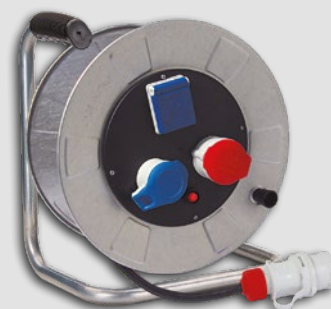
GOLIA INDUSTRIAL CABLE REELS FRENCH STD



MADE IN
ITALY

Code	Length	Section mm ²	Cable Type	Ø Drum	Sockets	Colour	Single Package	Packing Unit	
14386	30 m	5G2,50	H07RN-F	320 mm	1x2P+E 16A 230V - IP44 1x3P+E 16A 400V - IP44 1x16A French std - IP44	blue red blue	box	1	CE

14386



Code	Length	Section mm ²	Cable Type	Ø Drum	Sockets	Colour	Single Package	Packing Unit	
14387	30 m	5G2,50	H07RN-F	320 mm	2x3P+N+E 16A 400V - IP44 1x16A French std - IP44	red blue	box	1	CE

14387





HI-PRO
PROFESSIONAL

Series for professional use

hi-pro

The plugs and sockets have a sought-after design and ergonomic form that makes grip comfortable.

They are made of polypropylene and rubber which grant resistance to all weather and use conditions and adds a particular non-slip effect characteristic for better grip.

The series can be used for voltages of up to 250V and currents of up to 16A. Also recommended for professional use.

All the series products are protected by European patent.

IP44

MADE IN
ITALY





RAPID TIGHTENING CABLE CLAMP

The innovative rapid tightening cable clamping system, of larger size, makes it possible to securely clamp power supply cables, even large, with 3G1,5 section of an H07RN-F type and 3G2,5 section of an H05VV-F or H07RN-F type. To fully satisfy professional needs, passing the specifications called for by the European standards.



SUITABLE FOR PROFESSIONAL USE



Hi-Pro series is suitable for professional use and does not require any products to increase resistance. It is able to withstand various weather and usage conditions, even the most severe.



The eye bolt fitted to the Hi-Pro facilitates connection for attachment and detachment and for environments for use where there is dust, humidity and oils. The product can be protected against damage or dangerous situations (trampling on it or pools of water), because it is easy to hang up.

SERIES FOR PROFESSIONAL USE HI-PRO FRENCH STD



MADE IN
ITALY



Code	Description	Colour	Single Package	Packing Unit	
80052	Professional plug 2P+E 16A French/German std - IP44	black		20	

80052

Code	Description	Colour	Single Package	Packing Unit	
81034	Professional socket 2P+E 16A French std - IP44	black		20	

81034

Code	Description	Colour	Single Package	Packing Unit	
81035	Connector with sockets 3x2P+E 16A French std - IP44	black		10	

81035

IP44 LINEAR PATCH CORDS WITH H07RN-F CABLE

Code	Lenght	Cable mm ²	Plug	Socket	Colour	Single Package	Packing Unit	
92992	10 m	3G1,5	2P+E 16A, French std	3x2P+E 16A, French Std.	black	shrink film	1	CE

Code	Lenght	Cable mm ²	Plug	Socket	Colour	Single Package	Packing Unit	
92996	10 m	3G2,5	2P+E 16A, French std	3x2P+E 16A, French Std.	black	shrink film	1	CE

92996

MULTISOCKET



MADE IN
ITALY



42040FR

IMPACT RESISTANT MULTISOCKET FOR HEAVY DUTY

Code	Outlets	Socket Type	Cable	Section mm ²	Colour	Single Package	Packing Unit	
42040FR	4	2P+E 16A, French std	5 m	3G1,50	black	Flow pack	6	CE
42041FR	4	2P+E 16A, French std	10 m	3G1,50	black	Flow pack	6	CE



domestic plugs

FME designs and manufactures a wide range of electrical products for residential use, featuring the latest technological innovations, careful design, top quality materials and the highest manufacturing standards. The handy “Flow Pack” packaging system provides an easy to use and practical solution to protect the products on the shelf. Cutting edge technological research in addition to its exclusive manufacturing know-how, have allowed FME products to lead the field.



PLUGS FOR DOMESTIC USE

GENERAL SPECIFICATIONS

- Manufactured in compliance with CEI 23-50 and DIN VDE 0620-1.
- Body and terminal blocks in highly heat and shock resistant special polymers.
- Plug in self-extinguishing material with nickel-plated brass pins.
- Plug with side earth contacts (German standard) and nickel-plated central pocket (French standard).
- The cable outlet on the plug can be positioned to the side 90° (90°) or axially (axial).
- Socket in self-extinguishing material with shielded brass pockets.
- Cable clamp with screws.
- Voltage: 250V.

WARNING

- For the connection do not use a cable smaller than 1mm²



**SPACE SAVING BEHIND FURNITURE
MADE OF POLYCARBONATE**



French and German std. Plugs

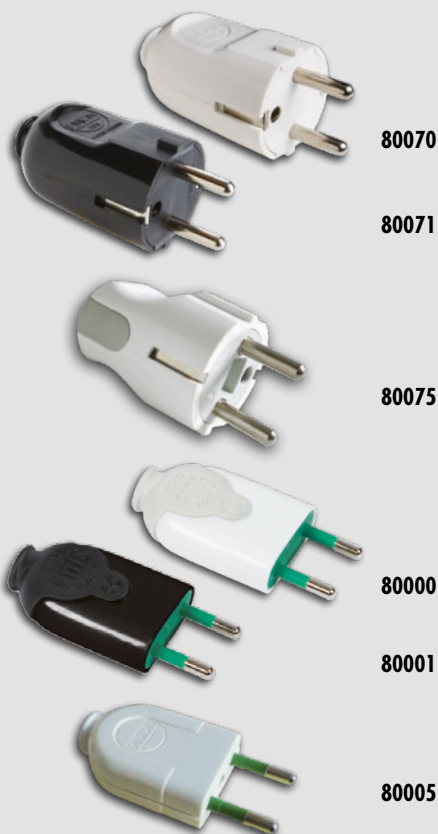
French and German standard plugs with earth contact. Manufactured in black or white polypropylene, the plugs provide either an axial or a 90° cable position. Manufactured in compliance with CEI 23-50.

Axial or 90° cable position.



Trailing Plugs

They are produced in compliance with the European standard and IMQ branded. Are suitable in black or white colour.



Code	Description	Colour	Single Package	Packing Unit	
80070	Plug 2P+E 16A French/German std	white	flow pack	50	
80071	Plug 2P+E 16A French/German std	black	flow pack	50	

SPACE SAVING

Code	Description	Colour	Single Package	Packing Unit	Packing Unit
80075	Plug 2P+E 16A French/German std	white	flow pack	50	200
80076	Plug 2P+E 16A French/German std	black	flow pack	50	200

Code	Description	Colour	Single Package	Packing Unit	
80000	Bico Plug 2P 10A	white	flow pack	100	
80001	Bico Plug 2P 10A	black	flow pack	100	

Code	Description	Colour	Single Package	Packing Unit	
80005	Easy Plug 2P 10A	white	flow pack	100	IMQ
80006	Easy Plug 2P 10A	black	flow pack	100	IMQ

ADAPTOR FOR DOMESTIC USE



81085

Code	Description	Colour	Single Package	Packing Unit	
81085	One-way adaptor plug french/german std. 2P+E 16A socket british std. 2P+E 13A with mobile phone holder	white	-	200	CE

EXTENSIBLE PATCH CORDS



GENERAL SPECIFICATIONS

- Manufactured in compliance with CEI 23-50, CEI 23-124.
- Plug with parallel aligned pins in nickel-coated brass, shrouded and protected.
- Sockets with brass pockets, shielded with protection level 2.1 against accidental and voluntary contacts.

WARNING

- Do not exceed the maximum overload power stated on the item's label.
- Regularly perform a visual check to assess the conditions of cable, plugs and sockets.
- In order to maintain the spiral effect of the cable do not extend over 70% of the linear length stated for each specific cable.
- The cable length stated below is the original linear length of the cable.

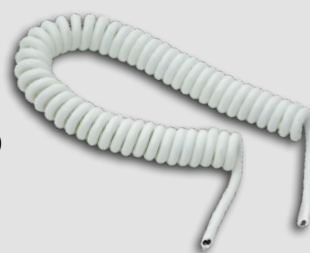
Code	Length	Cable mm ²	Colour	Single Package	Packing Unit	
90110	5 m	360,75	white	bag	12	CE
90111	5 m	360,75	black	bag	12	CE

Code	Length	Cable mm ²	Colour	Single Package	Packing Unit	
90290	3 m	361	white	bag	12	CE
90291	3 m	361	black	bag	12	CE
90130	5 m	361	white	bag	12	CE
90131	5 m	361	black	bag	12	CE
90190	10 m	361	white	bag	12	CE
90191	10 m	361	black	bag	12	CE

Code	Length	Cable mm ²	Colour	Single Package	Packing Unit	
90140	5 m	361,5	white	bag	12	CE
90141	5 m	361,5	black	bag	12	CE

Code	Length	Cable mm ²	Colour	Single Package	Packing Unit	
90150	5 m	461	white	bag	12	CE
90151	5 m	461	black	bag	12	CE

90290



90291





Series for professional use

CEE adaptors

The Fanton industrial adaptors series is essential where the available socket is not compatible with the user plug. Ideal to be used in building sites, camping, open-air markets, garages, gymnasiums, marinas and service providers.

Manufactured in accordance with EN 50250 and EN 60309-1/2.

MADE IN
ITALY

CEE INDUSTRIAL ADAPTORS FRENCH STD



Code	Description	Colour	Single Package	Packing Unit	
73001	French/German std 2P+E 16A 250V plug CEE 2P+E 16A 220V socket	blue	box	12	CE

73109	CEE 2P+E 16A 220V plug French std 2P+E 16A 250V socket	blue	box	12	CE
--------------	---	------	-----	----	----

92955	French/German std 2P+E 16A 250V plug CEE 2P+E 16A 220V socket	blue	bag + hanger	25	CE
--------------	--	------	-----------------	----	----

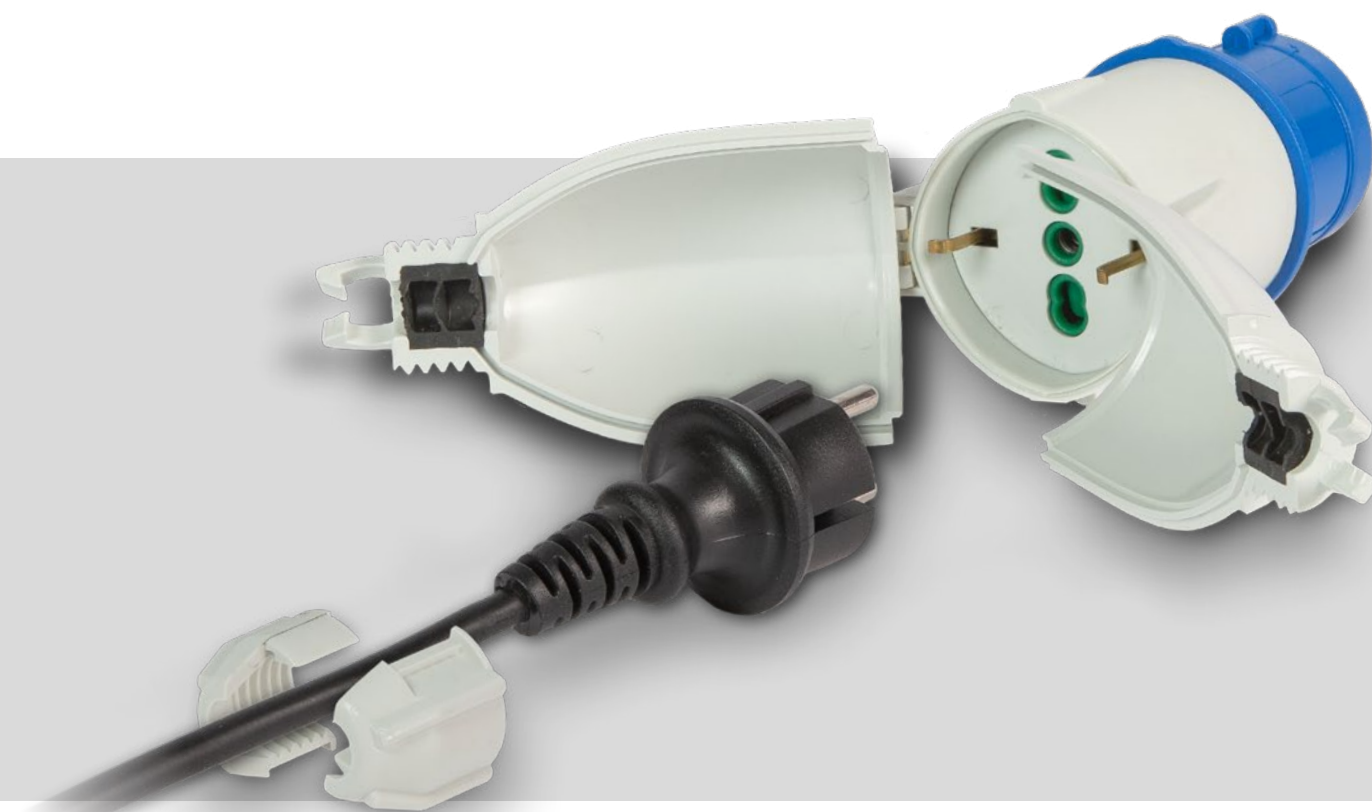
92954	CEE 2P+E 16A 220V plug French std 2P+E 16A 250V socket	blue	bag + hanger	25	CE
--------------	---	------	-----------------	----	----

73115	CEE 2P+E 16A 220V plug 2 x French std 2P+E 16A 250V socket	blue	box	6	CE
--------------	---	------	-----	---	----

73117	CEE 2P+E 16A 220V plug 1 x CEE 2P+E 16A 220V socket 1 x French std 2P+E 16A 250V socket	blue	—	6	CE
--------------	---	------	---	---	----

73126	CEE 2P+E 16A 220V plug 2 x CEE 2P+E 16A 220V IP44 sockets 1 x French std 2P+E 250V 16A socket	blue	—	6	CE
--------------	---	------	---	---	----





cee plug converter

optimus

Optimus is a plug converter fully compatible with both Italian and French/German standard domestic plugs. Optimus allows the usage of tools equipped with domestic plug, everywhere the use of industrial standard is needed, maintaining the tool warranty.

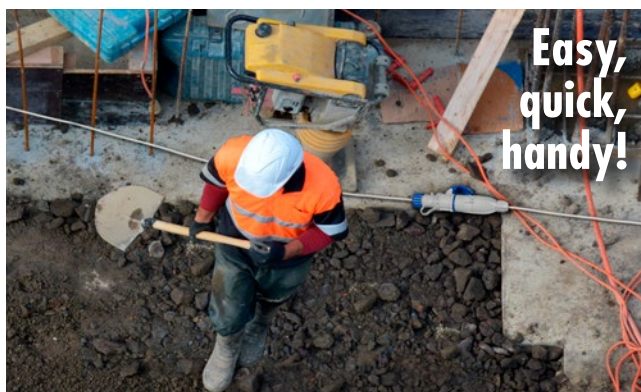
Easy and fast to assemble, 100% without screws, no live parts exposed during assembly and even during installation. Resistant to rain with an IP44 protection degree, it is suitable for the use on building site.

Its new patented system for closing and tightening of the rear cable guarantees a solid mechanical seal.



OPTIMUS - CEE PLUG CONVERTER

MADE IN
ITALY



Quick assembly,
100% without
screws



No live parts
exposed even
during installation



Resistant to rain
IP44 protection
degree



Suitable for use
on building site



No more cable cut.
Maintain the
WARRANTY!



UNIVERSAL
Accepting both Italian
and German standard plugs



**PATENTED CLOSING
SYSTEM**

OPTIMUS PLUG CONVERTER

Code	Description	Colour	Single Package	Packing Unit	CE
73020	Plug converter for industrial purposes IP44 2P+E 16A 200-250V 6h IP44 plug Italian-dual-size/german std. 2P+E 16A socket	grey	Bag	6	CE

OPTIMUS PLUG CONVERTER FOR ENTERTAINMENT

Code	Description	Colour	Single Package	Packing Unit	CE
73020-E	Plug converter for industrial purposes IP44 2P+E 16A 200-250V 6h IP44 plug Italian-dual-size/german std. 2P+E 16A socket	black	Shrink film	6	CE



73020

73020-E

This image shows a single sheet of white paper with horizontal ruling lines. The lines are evenly spaced and run across the width of the page. There are no margins, text, or other markings on the paper.

NOTES

[illegible]

NOTES

This image shows a single sheet of white paper with horizontal ruling lines. The lines are evenly spaced and run across the width of the page. There is no text or other markings on the paper.

CATALOGUES FOR BRITISH AND GERMAN STANDARD PRODUCTS ARE ALSO AVAILABLE



FANTON SpA reserves the right to modify/improve this catalogue and its products at any time without advance notification, in line with established legislation, except for printing errors.

FANTON[®]



FABBRICA
MATERIALE
ELETTRICO



CABLING
SYSTEM

FANTON SpA

Viale dell'Industria, 8/10 • 35026 CONSELVE (Padova) ITALY

• tel. +39 049 95 97 911 • fax +39 049 95 00 311

• www.fanton.com • export@fanton.com