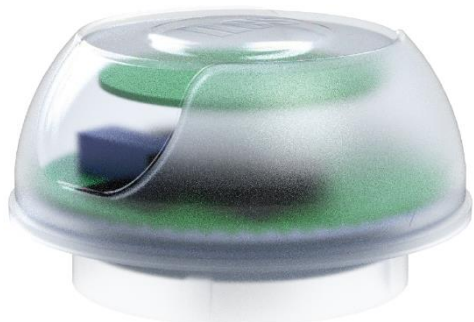


## Description



iLCS Wilamp IoT Street NEMA (WiSN) is an intelligent control device for remote control and monitoring of streetlights.

iLCS WiSN provides a Plug-and-Play installation on the lamp via a 7-pin NEMA connector that meets the ANSI C136.41-2013 standard.

The device is directly powered by the AC line, has an integrated power and energy meter for diagnostics and is equipped with a relay to cut off the driver power supply during standby time, offering an additional protection.

Communication with the data control unit takes place via wireless mesh network on the 2.4 GHz ISM band, with transmission power up to 20 dBm.

Equipped with brightness sensor and on-board GPS, it can also work in standalone mode.

## Technical specifications

Product code	WiSN-RMGA
RF communication	IEEE 802.15.4 Wireless Mesh Radio 2.4 GHz ISM band 16 radio channels +20 dBm max TX power
Output ports	Max load of 500W @ 230 V AC 0-10 V output (max 10 mA) DALI master output (optional)
Power supply	110/305 V AC @ 50/60 Hz 1.4 W (max) Overvoltage, overload and thermal protection Short-circuit and open-circuit protection
Features	Integrated energy metering Standalone operation Firmware update over-the-air (OTA) Dedicated redundant EEPROM Ambient brightness sensor ADC input for external signal 3-axis accelerometer Compatible with TAI and FAI installation
Built-in GPS	GPS, GLONASS with SBAS receiver High precision map positioning Automatic dusk and dawn calculation
Encryption	Hardware-based with 256 bit key
Temperature range	-25°C ÷ 70°C (operation) -40°C ÷ 120°C (stockage)
Protection grade	IP66
Size	112 x 112 x 62.5 mm

## Product size

