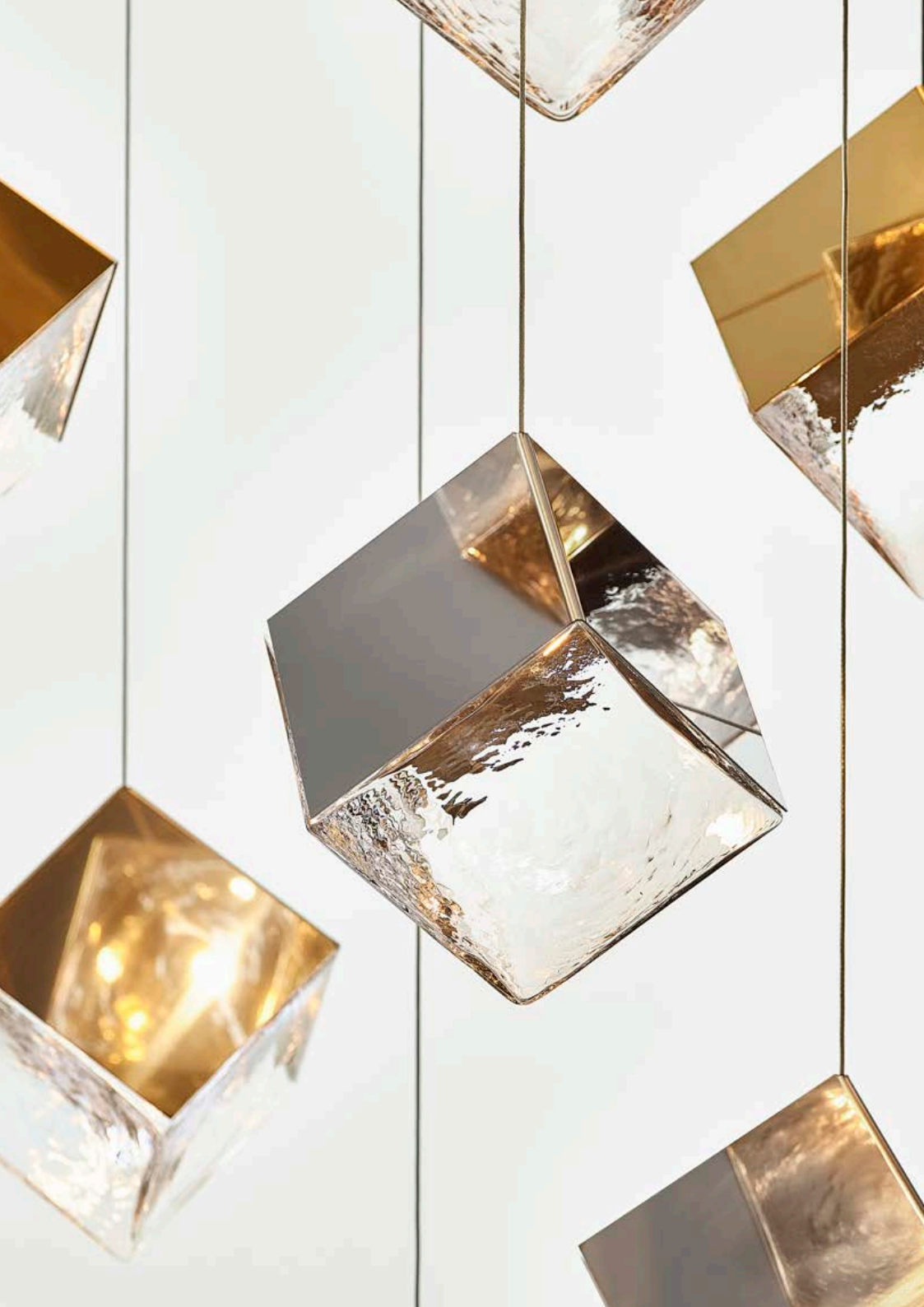


pyrite

lomma



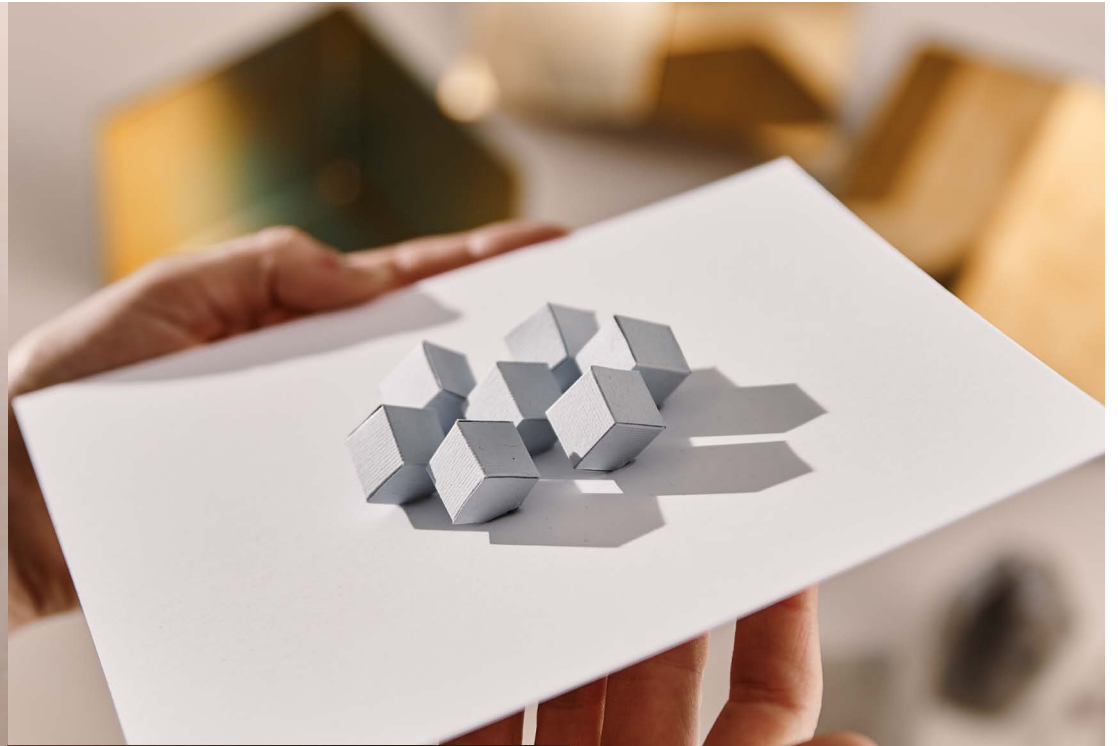


inspiration







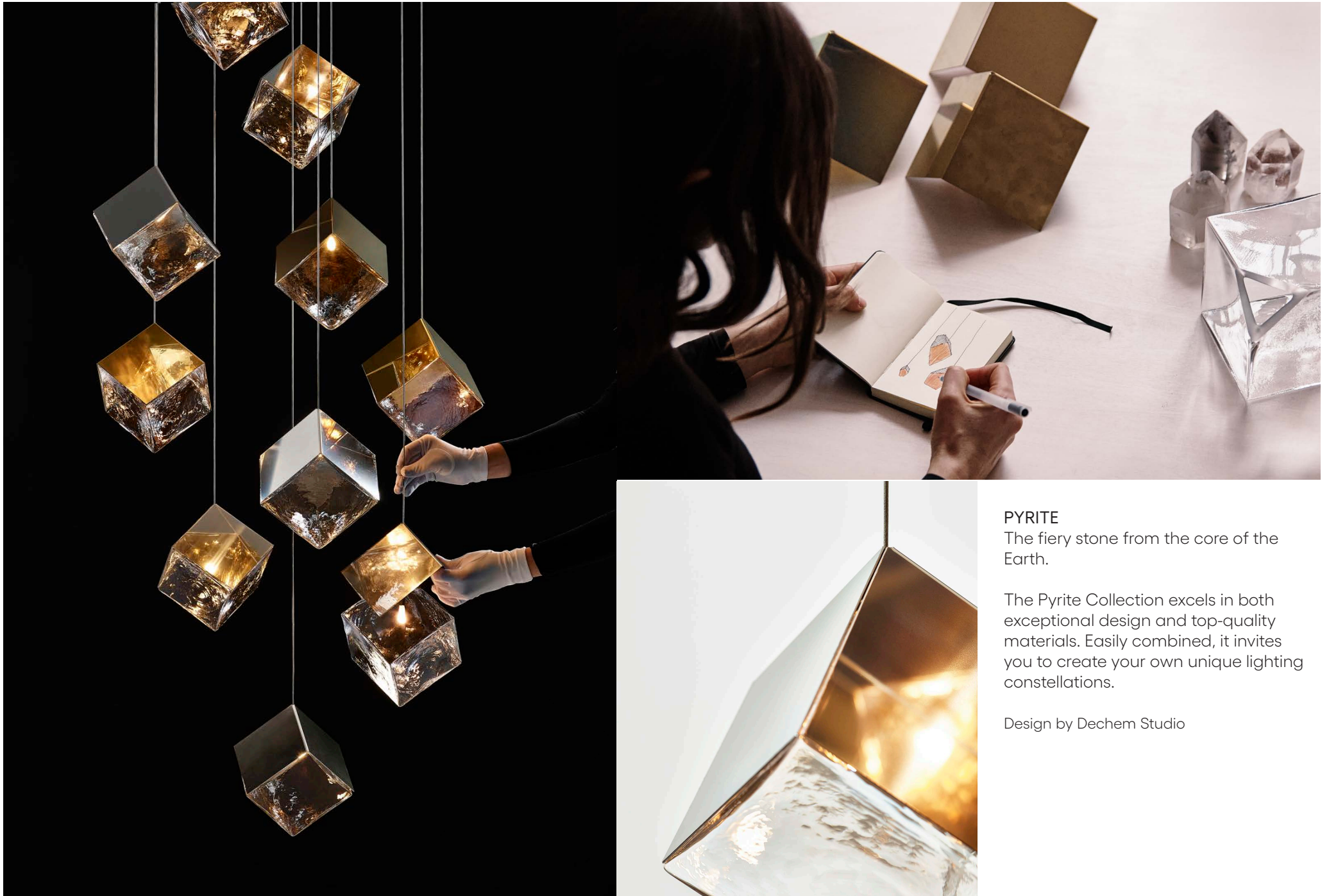


## PYRITE

The fiery stone from the core of the Earth.

This BOMMA collection was inspired by pyrite, the golden fire-stone in the shape of a perfect cube, while the silver version of the shade reflects its inspiration in salt crystals. By blowing a molten organic substance into a precise cold form, the skilled hands of our glassmakers create a unique light fixture of elemental, yet perfect shape. The gleaming surface of this hand-blown crystal cube is enclosed from three sides by a polished metal component in either silver or gold tones.

Design by Dechem Studio



## PYRITE

The fiery stone from the core of the Earth.

The Pyrite Collection excels in both exceptional design and top-quality materials. Easily combined, it invites you to create your own unique lighting constellations.

Design by Dechem Studio

production







projects





Chalets by LHM Group, Norway, 2022





Installation of 53 pcs of small and large Pyrite



Installation of 81 pcs of small and large Pyrite





Installation of 26 pcs of small and large Pyrite | Bomma Atelier, Prague, 2022





BOMMA catalogue, 2021



Installation of 36 pcs Pyrite





Installation of 98 pcs Pyrite



Installation of 27 pcs Pyrite





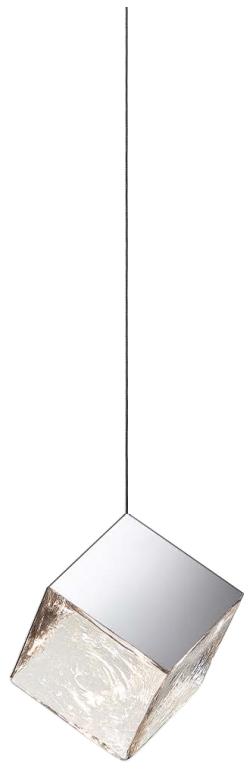
Avenir office, Czechia, 2023



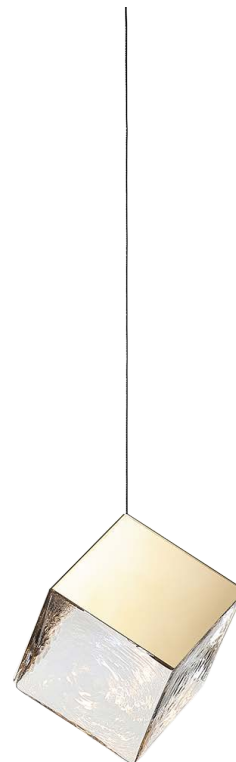
Maison Diez Company, Mexico, 2022



options



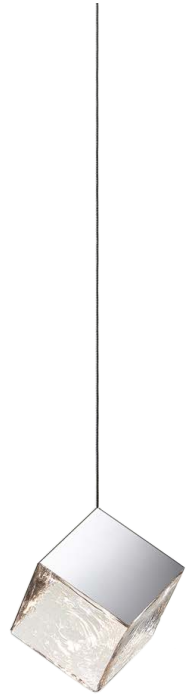
salt  
clear glass  
silver fitting



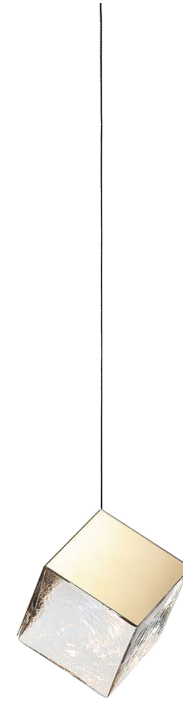
pyrite  
clear glass  
gold fitting

# pendant large

Glass options: clear  
Fitting options: silver, gold



salt  
clear glass  
silver fitting

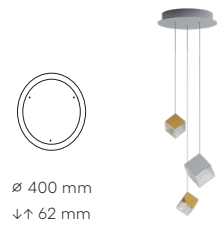


pyrite  
clear glass  
gold fitting

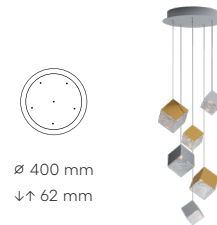
# pendant small

Glass options: clear  
Fitting options: silver, gold

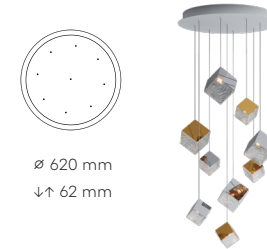




3 pendants



6 pendants



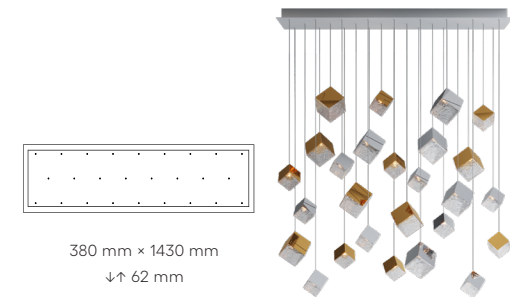
9 pendants



12 pendants



26 pendants



26 pendants  
rectangular

# chandeliers

Pyrite collection is suitable for bomma constellation.  
Project your unique vision into space and create  
your own bomma constellation.

technical informations

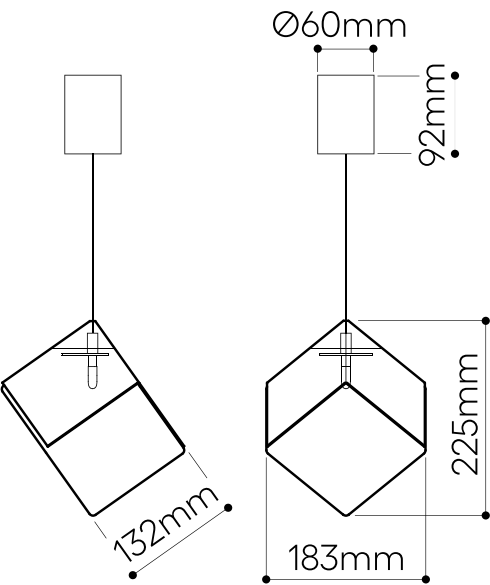
# PYRITE

## large pendant

Design by  
Studio Dechem

### Handmade glass attributes

All Bomma products are hand-made from mouth-blown lead-free crystal. Therefore any small bubbles, non-melts and irregularities in the glass are both proof and a characteristic feature of this traditional craft.



### LIGHTING DESCRIPTION

Size	183 × 209 × 225 mm 7,2 × 8,2 × 8,9 inch
Cable	transparent 2,5 m / 98,4 inch
Weight	+ - 1,9 kg / 4,2 lbs
Glass	mouth-blown lead-free crystal in clear
Mounting + Metal sheet top	silver (polished stainless steel) gold (polished stainless steel with nitride tittan coating)
Protection	IP 20
Nominal voltage	220-240V / A.C. 50 hz (EU) 110-120 V / A.C. 60 Hz (USA)
Class	III. (EU, USA)

### LIGHT SOURCE

Type	G4, 1,2W LED, 100 lm
Base	G4 (EU) / G4 (USA)
Voltage	12V, AC
Temperature	2700 K
Color index	RA 90+
Dimming	Dimmable in constellations. Single pendant is non-dimmable except UL

### TRANSFORMER

Primary	100–240V, 50/60 Hz, 0,04A
Secondary	DC 700mA (0,5V–4V) 1×3W

### PACKAGING

Material	Cardboard
Size	230 × 220 × 220 mm 9 × 8,6 × 8,6 inch

Origin: traditionally produced in the Czech Republic  
Intellectual property license holder: Bomma Czech Republic (EU)  
Represented by BMRC group s.r.o.

CERTIFICATES



bomma

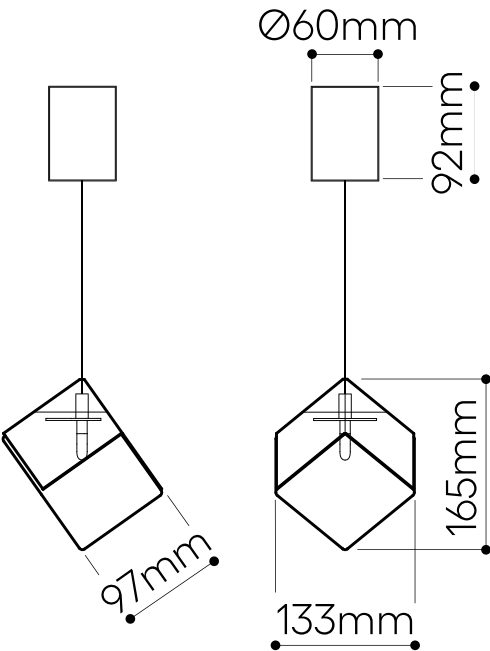
# PYRITE

## small pendant

Design by  
Studio Dechem

### Handmade glass attributes

All Bomma products are hand-made from mouth-blown lead-free crystal. Therefore any small bubbles, non-melts and irregularities in the glass are both proof and a characteristic feature of this traditional craft.



### LIGHTING DESCRIPTION

Size	133 × 153 × 165 mm
	5,2 × 6 × 6,5 inch
Cable	transparent 2,5 m / 98,4 inch
Weight	+ - 0,8 kg / 1,76 lbs
Glass	mouth-blown lead-free crystal in clear
Mounting + Metal sheet top	silver (polished stainless steel) gold (polished stainless steel with nitride tittan coating)
Protection	IP 20
Nominal voltage	220-240V / A.C. 50 hz (EU) 110-120 V / A.C. 60 Hz (USA)
Class	III. (EU, USA)

### LIGHT SOURCE

Type	G4, 1,2W LED, 100 lm
Base	G4 (EU) / G4 (USA)
Voltage	12V, AC
Temperature	2700 K
Color index	RA 90+
Dimming	Dimmable in constellations. Single pendant is non-dimmable except UL

### TRANSFORMER

Primary	100–240V, 50/60 Hz, 0,04A
Secondary	DC 700mA (0,5V–4V) 1×3W

### PACKAGING

Material	Cardboard
Size	185 × 165 × 165 mm 7,3 × 6,5 × 6,5 inch

Origin: traditionally produced in the Czech Republic  
Intellectual property license holder: Bomma Czech Republic (EU)  
Represented by BMRC group s.r.o.

### CERTIFICATES





BMRC Group s.r.o.  
Port7 – building D  
Pod Dráhou 1638/7  
170 00, Prague  
Czech Republic

[info@bomma.cz](mailto:info@bomma.cz)

step beyond