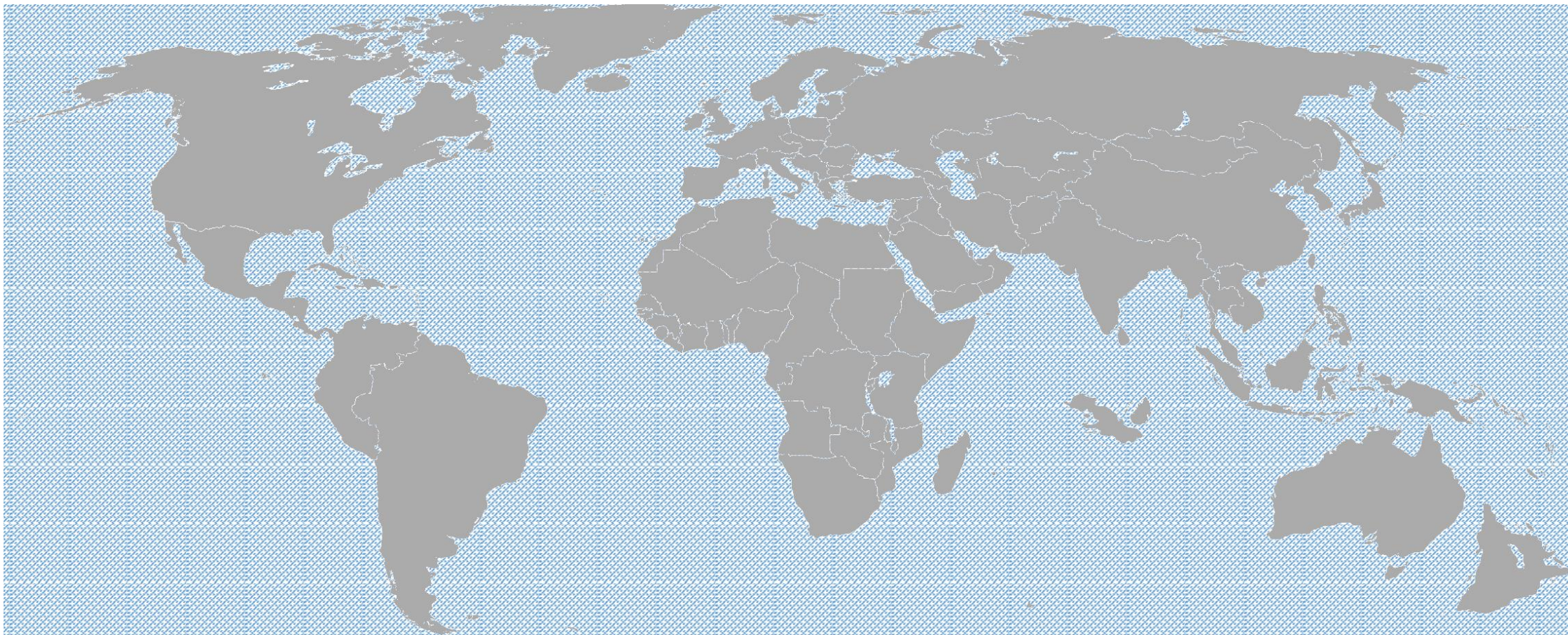




Morelux Lighting Limited

Die Casting Capability





Brief Introduction

Two Decades Strong:

For over 20 years, Morelux Lighting Limited has specialized in producing die casting components for both the lighting and industrial machinery sectors. We've collaborated with leading global industries and numerous Original Equipment Manufacturers (OEMs) worldwide.

Vision and Commitment:

Our aspiration is to be an industry leader, delivering top-notch aluminum die-casting solutions. We prioritize quality in our components and consistently strive for excellent customer service.





Core Competency

Professional Problem-Solving Expertise

Our expert engineering teams consistently offer swift feedback and tailored technical solutions to each of our client's project.

Prime Industrial Hub

Located near Ningbo-Zhoushan Port, we're in one of China's prime economic regions with excellent transportation and a strong industrial network.



Comprehensive Services

- Mold design and fabrication
- Die casting
- Precision CNC machining
- Finishing
- Powder coating
- Local assembly

Equipment Overview

- High Precision CNC, EDM, Drilling, Wire Cutting
- Die casting machines from 200T to 2000T
- Powder Coating Line: 3 lines with ability to surpass 3000 hrs of salt spray test



Engineering Skills

**Development And Design
Capability**

**AUTOCAD, Solidworks,
Pro/E software**



**Mold Flow Analysis,
Mold TR & Product TR**

**Engineering Documents
Management**



Radial Drilling Machine



Engraving & Milling Machine



Wire Cutting Machine



EDM Machine



CNC Machine



Pressing Machine



Die Cast Machinery from 200T - 2000T



Trimming Die



CNC Machining





Testing Center



X-ray flaw detector



Spectrograph



Tensile Testing Machine



CMM (Coordinates Measuring)



Hardness Testing



Powder Coating Line



Three State of The Art powder coating lines, having ability to surpass 3,000 hours of salt spray test.





Quality Control

A Whole New Level

Quality as our Language:

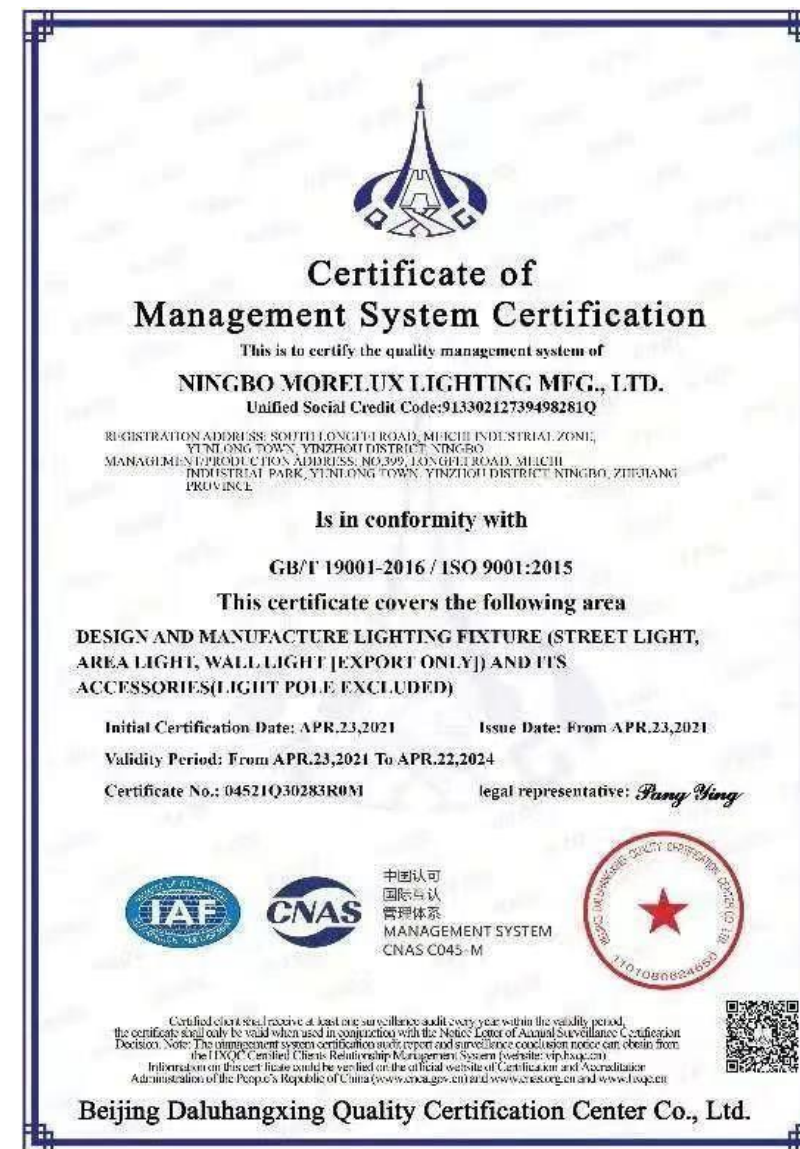
At Morelux, we firmly believe that a top-tier product naturally stands out and speaks for itself.

Redefining Standards:

Venturing into this new decade, we're pushing boundaries and setting unparalleled industry benchmarks to amplify our quality.

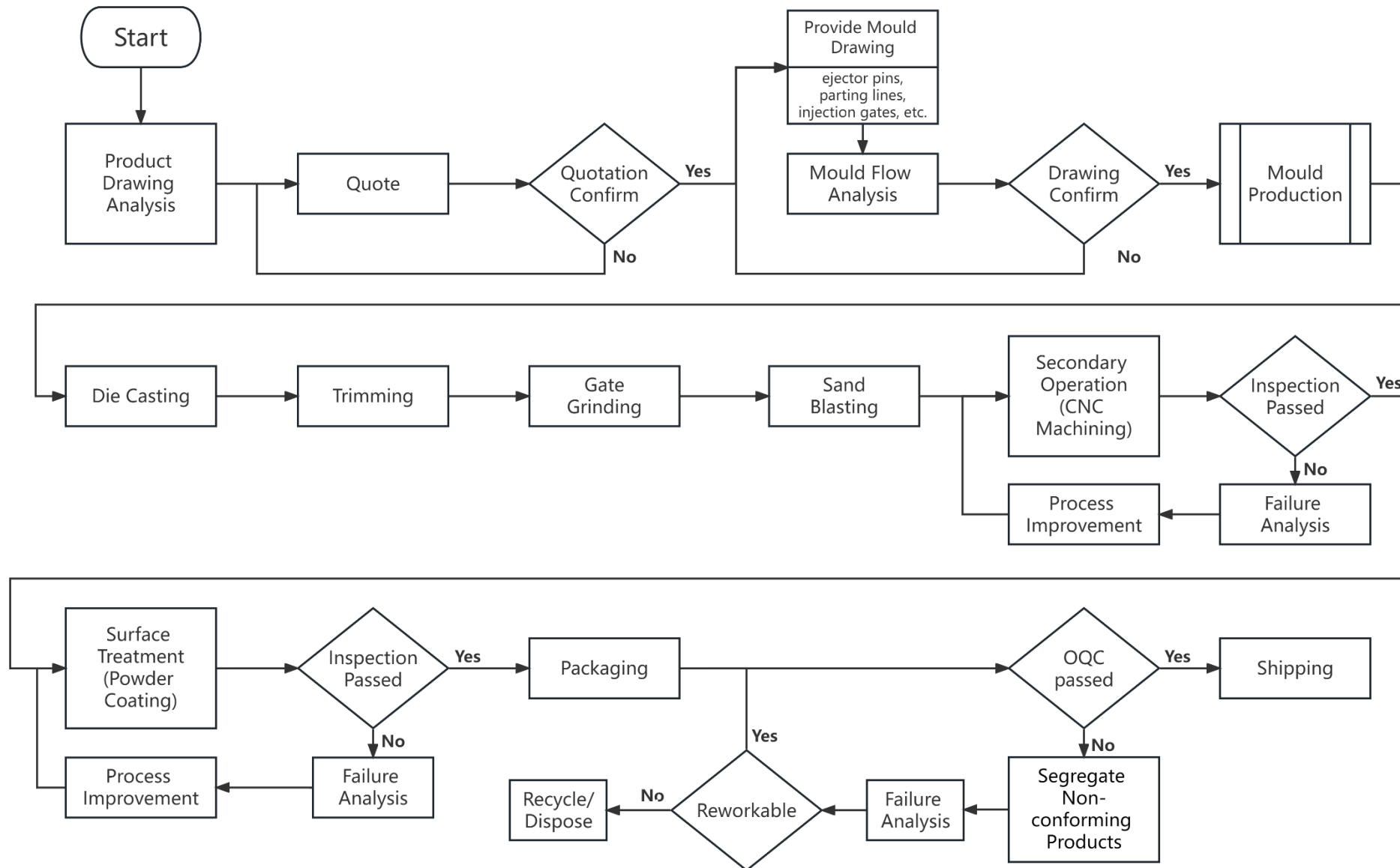
Integrated Excellence:

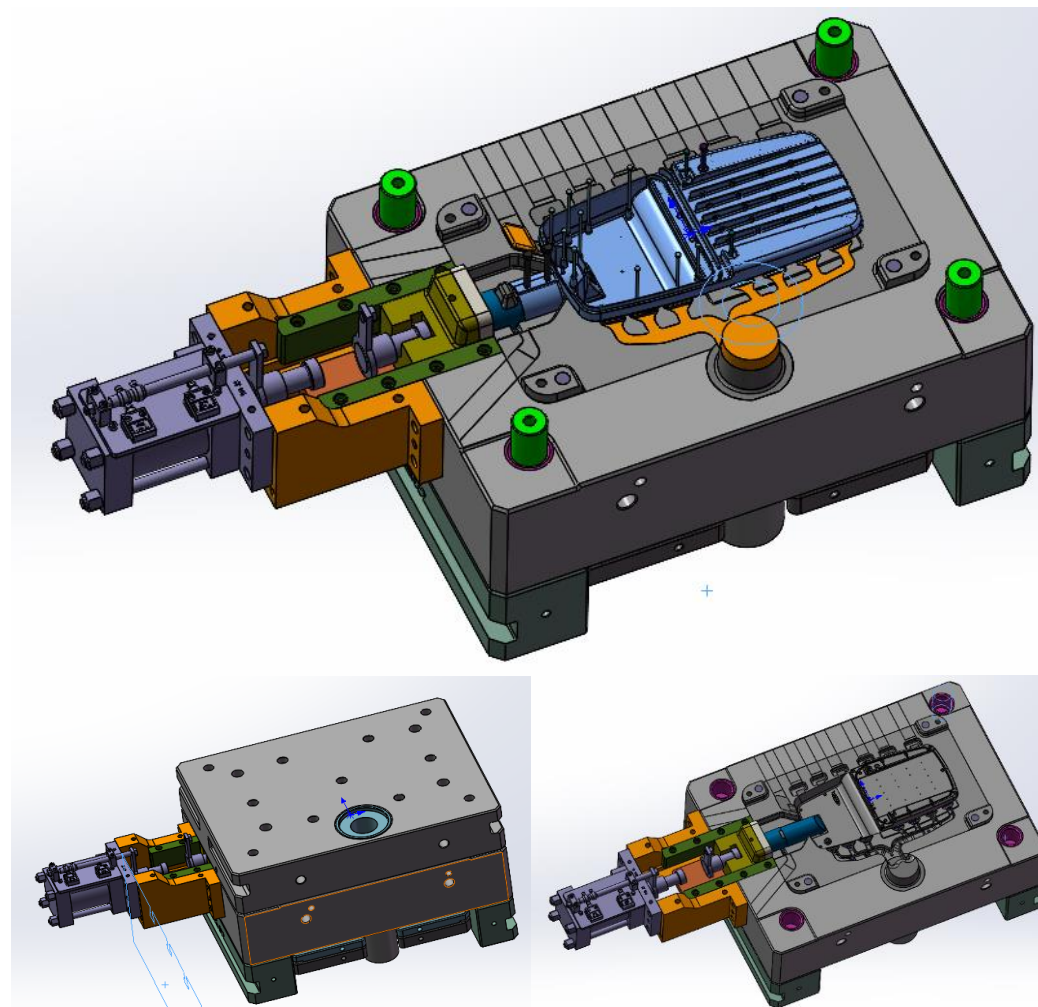
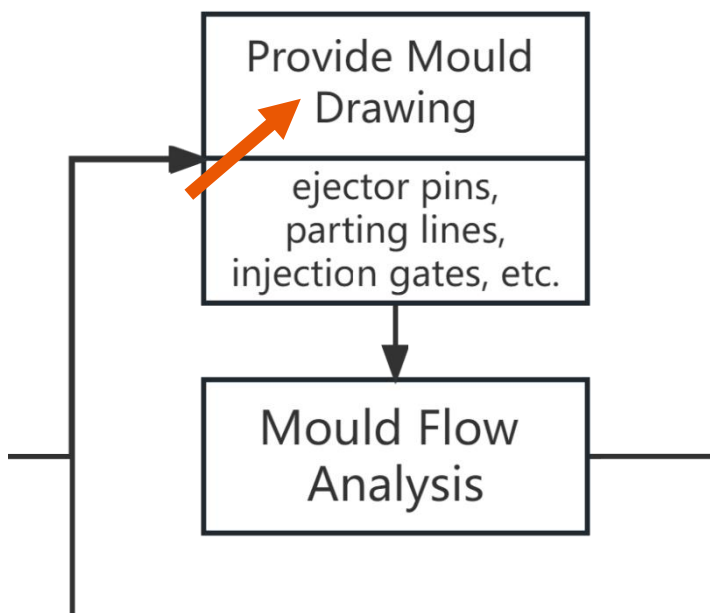
With our fully vertically integrated structure, we have the comprehensive expertise to monitor and refine every step of the manufacturing.

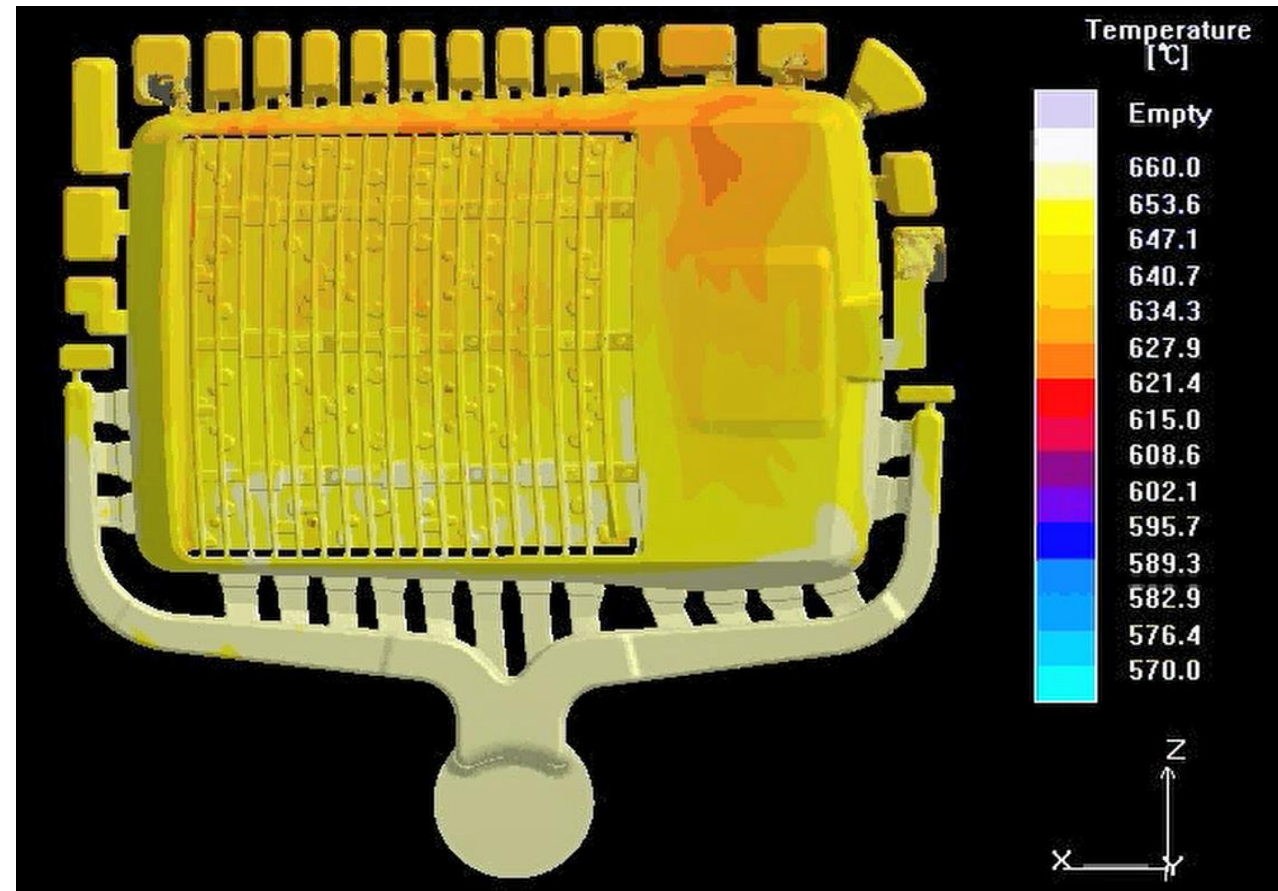
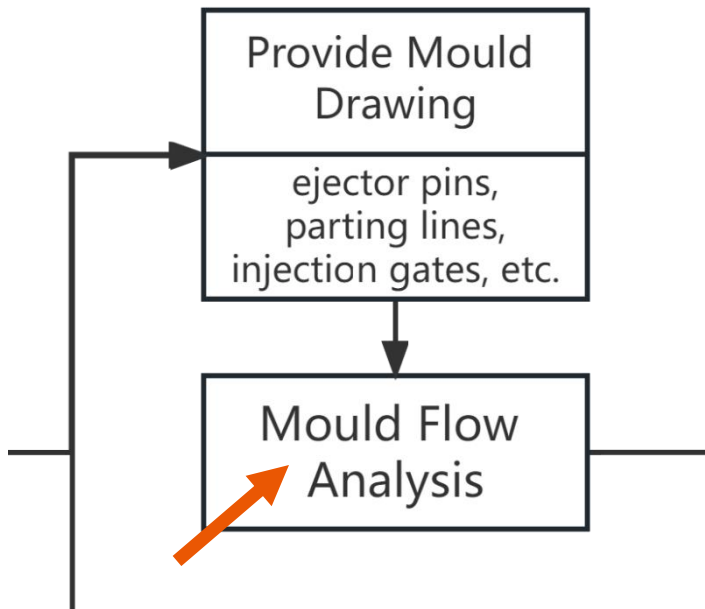


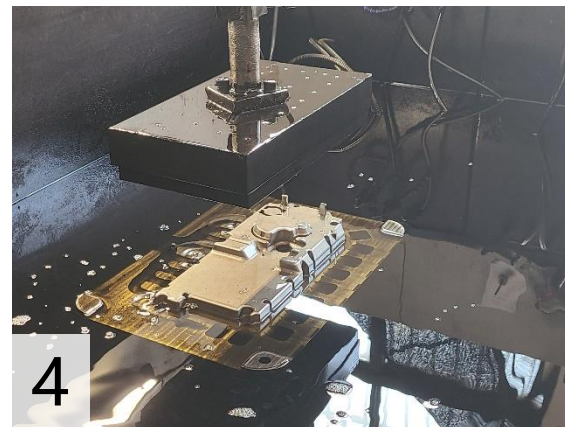
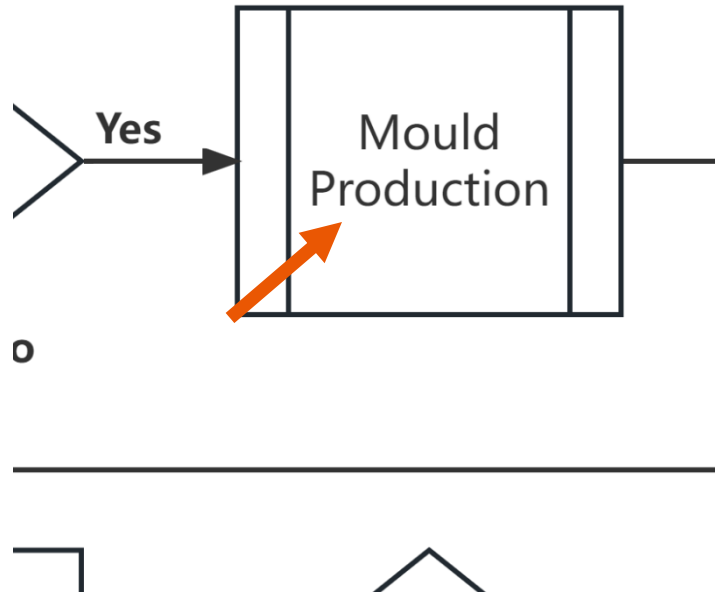


Start to Shipping Process









1. Surface Grinding
2. EDM
3. Precision CNC
4. Graphite Electrode EDM

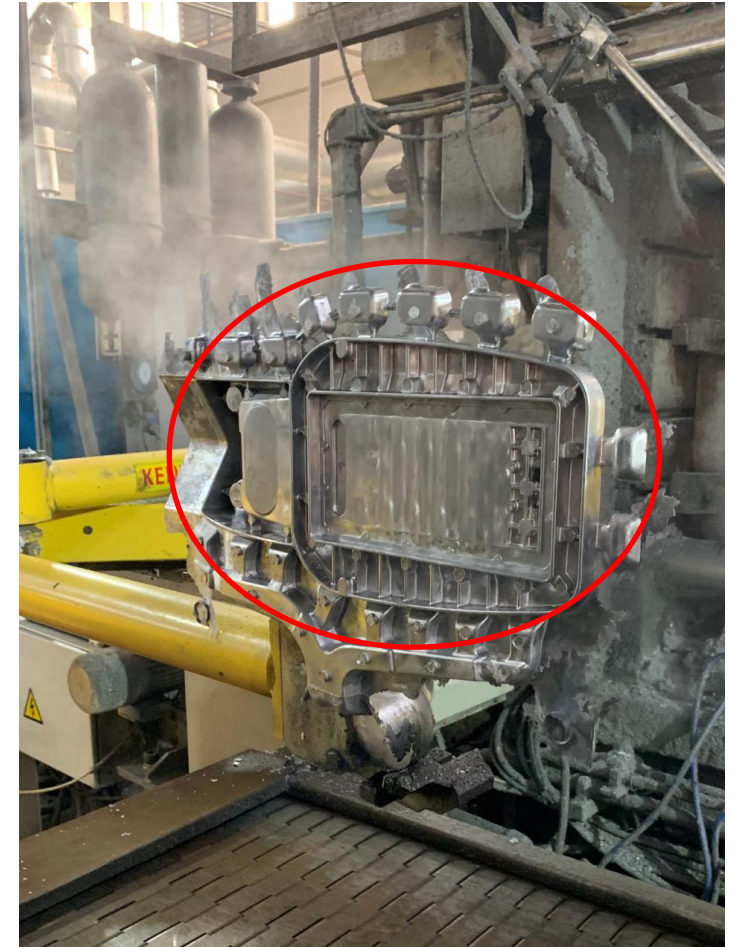
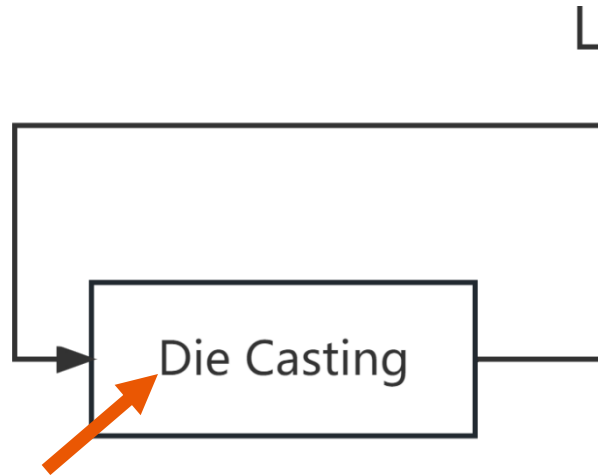
```

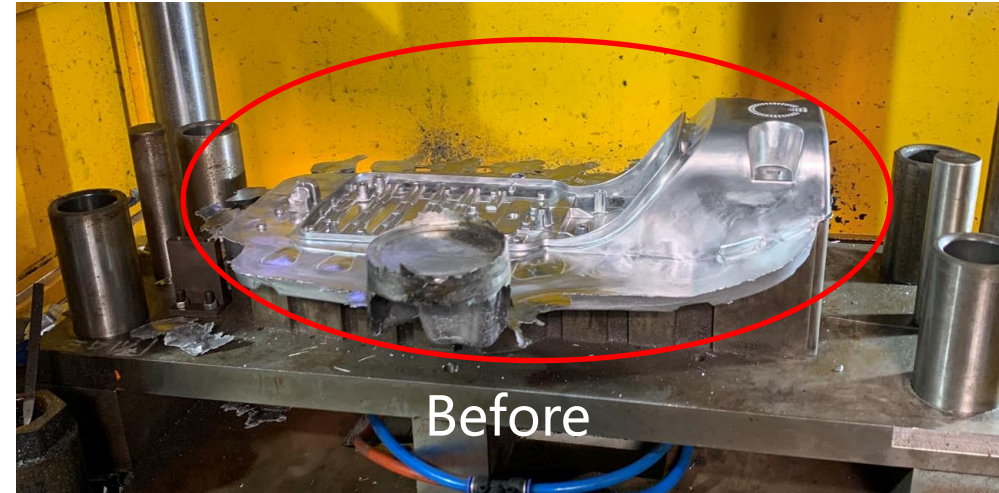
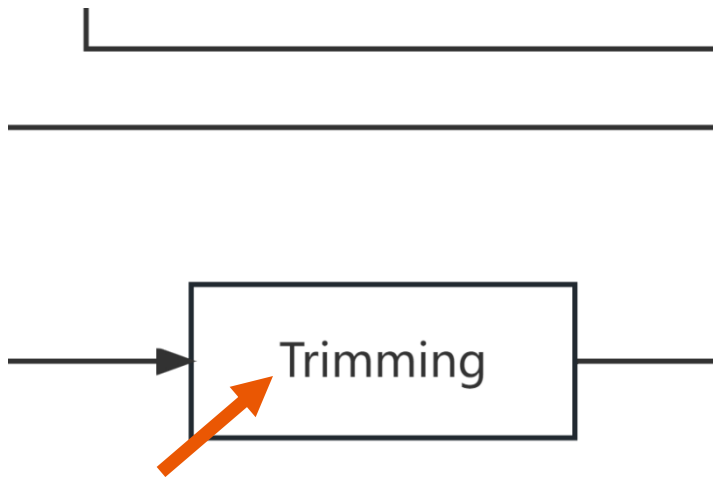
graph LR
    Yes[Yes] --> MP[Mould Production]
    MP --> Out[ ]
    style Out fill:none,stroke:none
  
```

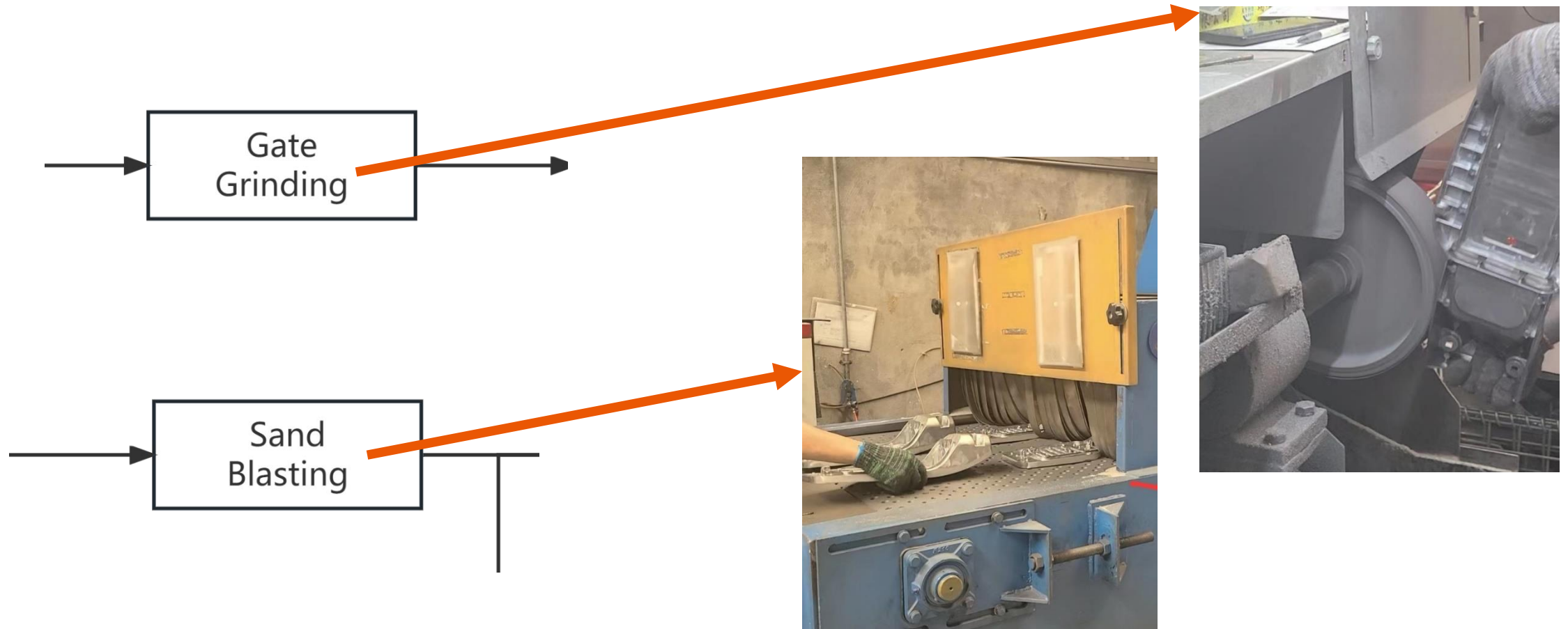
Part# / Drawing#	
Description:	

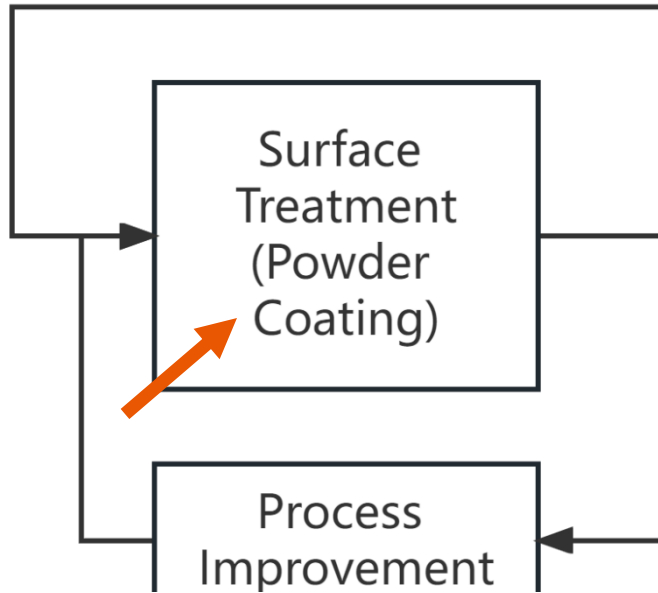
Customer	客户	Customer A	Today	2023/6/7	Est. Mould Complete	2023/7/14	Est. Period	48 days 自然日	42 working days 工作日
Project	项目名	Project B	今天		预计模具完成时间		预计周期		
Manager	负责人	John Doe	Project start		Actual Mould Complete		Actual Period		
Last Update	上次更新	2023/6/7	项目启动	2023/5/27	实际模具完成时间		实际周期		

Month 月份		2023-May 五月										2023-Jun 六月										2023-Jul 七月																																			
Date 日期		22	23	24	25	26	27	28	29	30	31	1	2	3	4	5	6	7	8	9	10	11	12	13	14	15	16	17	18	19	20	21	22	23	24	25	26	27	28	29	30	1	2	3	4	5	6	7	8	9	10	11	12	13	14	15	16
Drawing Analysis & Mould Design 图纸分析及 模具设计	Estimated						5 days																																																		
	Actual						5 days																																																		
Design Approval 设计审批	Estimated						4 days																																																		
	Actual						4 days																																																		
Core Material Preparation 模仁备料	Estimated						5 days																																																		
	Actual						5 days																																																		
Base Processing 模座加工	Estimated						17 days																																																		
	Actual						5 days																																																		
Core Rough Processing 模仁粗加工	Estimated						3 days																																																		
	Actual						0 days																																																		
Heat Treatment 热处理	Estimated						5 days																																																		
	Actual						0 days																																																		
Electrode Processing 电极加工	Estimated						6 days																																																		
	Actual						0 days																																																		
Core Precision Processing 模仁精加工	Estimated						5 days																																																		
	Actual						0 days																																																		
Wire Cutting Processing 线切割加工	Estimated						5 days																																																		
	Actual						0 days																																																		
EDM 电火花加工	Estimated						5 days																																																		
	Actual						0 days																																																		
Polishing 抛光	Estimated						4 days																																																		
	Actual						0 days																																																		
Engraving 刻字	Estimated						3 days																																																		
	Actual						0 days																																																		
Assembly 组合	Estimated						2 days																																																		
	Actual						0 days																																																		
Mould Closing 合模	Estimated						2 days																																																		
	Actual						0 days																																																		
1st Trial Moulding 第一次试模	Estimated						2 days																																																		
	Actual						0 days																																																		
Modification and Optimization 修正与优化	Estimated						1 days																																																		
	Actual						0 days																																																		
2nd Trial Moulding 第二次试模	Estimated						0 days																																																		
	Actual						0 days																																																		
Mould Complete 完成模具	Estimated						0 days																																																		
	Actual						0 days																																																		











Lead Time

60days

Mold
Production
& First Article

15days

Customer
Approval

45days

Initial Order
Production

40days

Container
Shipment

160days

Initial
Order
Lead Time

Lead time is subject to various factors:

- Mold complexity
- Specific production details
- Transportation methods
- Customer requirements

The timeframe above is an approximate estimate.

35days

Repeated
Order
Production

40days

Repeated
Order
Shipment

75days

Repeated
Order
Lead Time



Highly flexible, optimized & powerful supply chain solutions

CHINA DIRECT / FOB Ningbo

Full 20' and 40' containers constitute the cornerstone of our services, offering optimal cost-efficiency.

Malaysia DIRECT / FOB Selangor

Coming Soon!

Delivered Duty Paid

We provide end-to-end solutions, including freight, insurance, and in-land trucking, all at preferential rates thanks to our established connections.

Direct-From- Factory Drop Ship

For urgent overseas projects, we manufacture and drop-ship goods directly to your site or local partner, bypassing North America to save time and costs.



Highly flexible, optimized & powerful supply chain solutions

JIT China Assembly

Our China warehouse maintains a ready stock of your components, allowing for immediate assembly and reducing lead times to just 2 weeks.

Just-in-Time

Your products are stored in our Hickory, NC warehouses, shipped within 48 hours, and invoiced upon dispatch. We offer a 4-month hold to improve your cash flow.

Vendor Managed Inventory

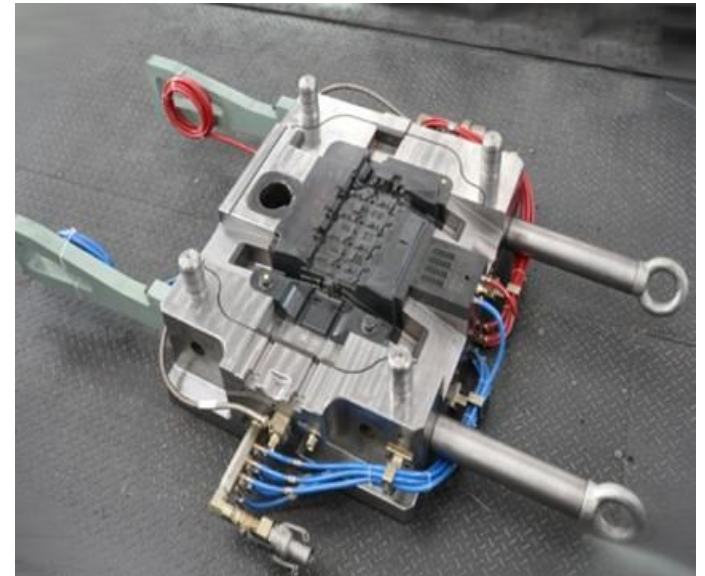
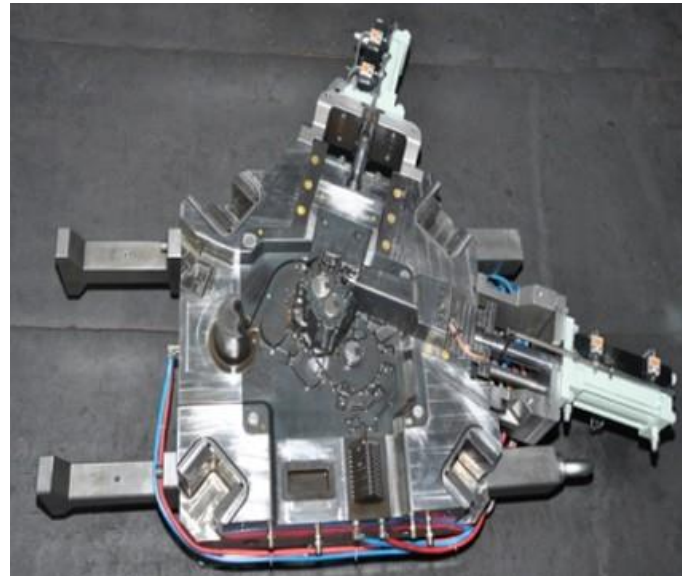
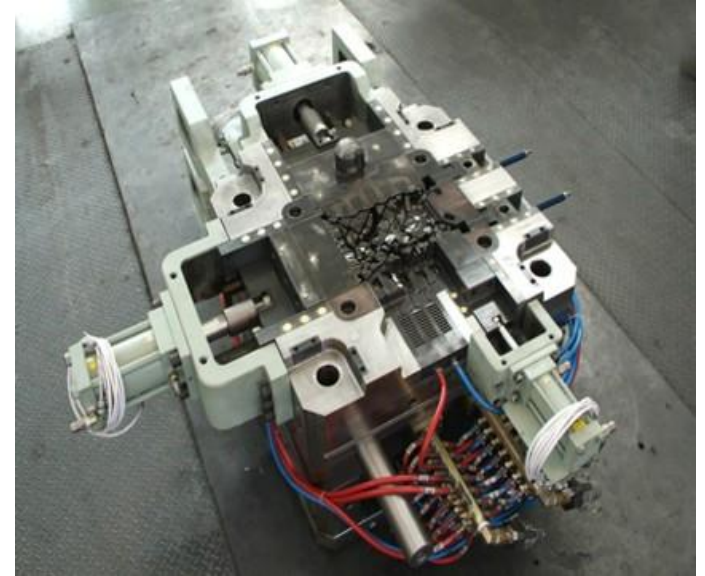
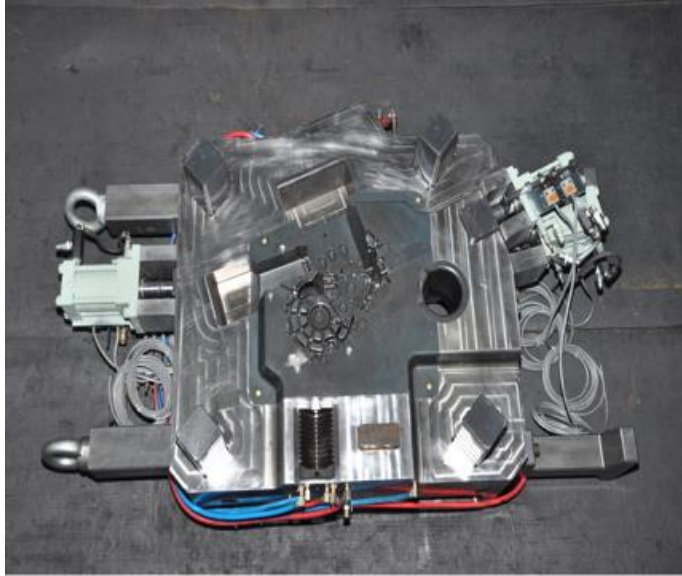
Our inventory teams and software integrate seamlessly with your ERP or create new systems, ensuring on-time production and stock availability.

Consignment

Sell first, pay later. We provide up to three months of consignment, enhancing your cash flow flexibility.



Production Parts - Mold





Valve Body



Auto Bracket



Lighting Parts





Thank You



MORELUX LIGHTING LIMITED

China Office: 17/F Guangbo Mansion, #1357, Yinxian Avenue Yinzhou District, Ningbo, China 315100

United State Office: 585 11th Street NW, Hickory NC 28601

China Factory: No.399 Longfei Road, Yunlong Town, Yinzhou District, Ningbo, China 315137

Malaysia Factory: No.14, Jalan Anggerik Mokara 31/50, Seksyen 31, Kota Kemuning, 40460 Shah Alam, Selangor