



# MORELUX LUMINAIRES



# MANUFACTURING UNITS AT MALAYSIA/CHINA

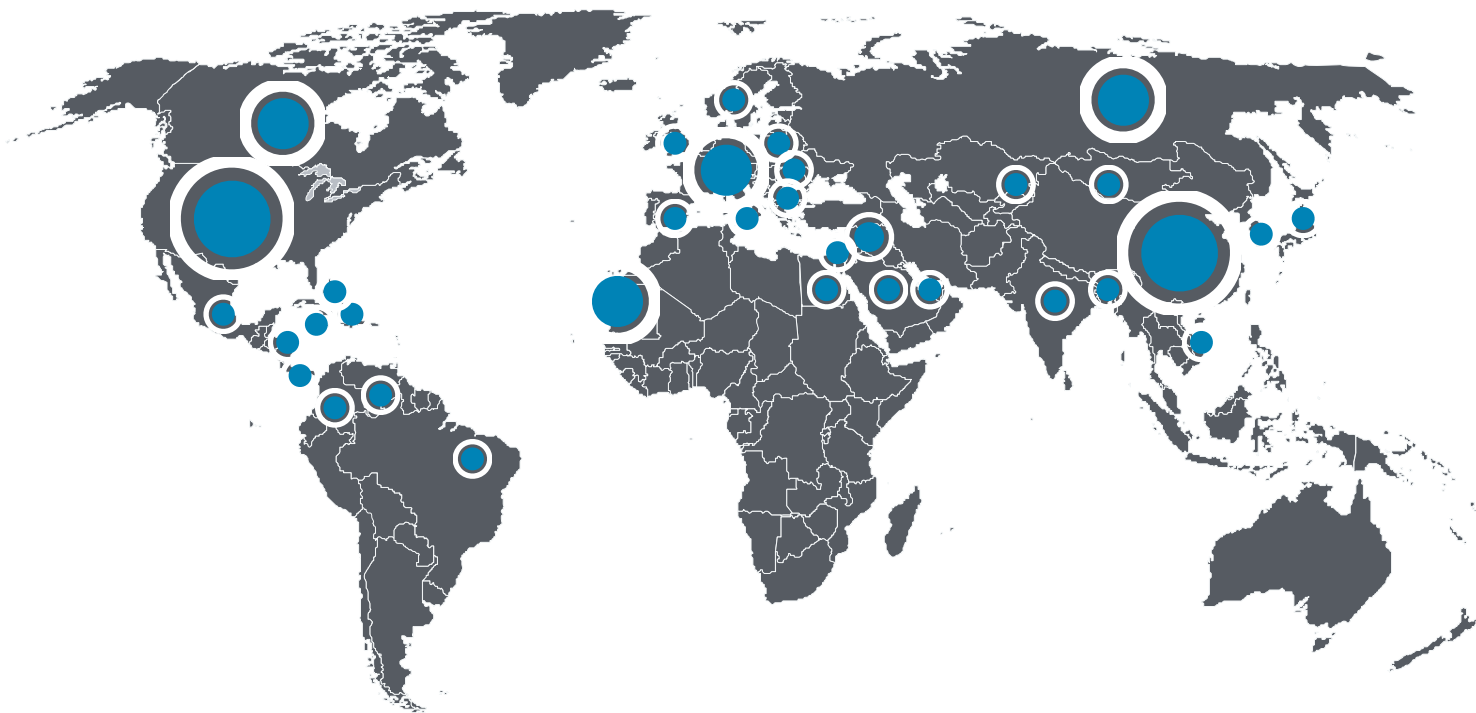
750,000 SQ.FT AND VERTICAL MANUFACTURING ACROSS  
FOUR OWNED FACTORIES

 **400**  
Employees

 **69,677**  
sq.m



## Projects in 30 Countries Around the World





## SKETCH & CAD



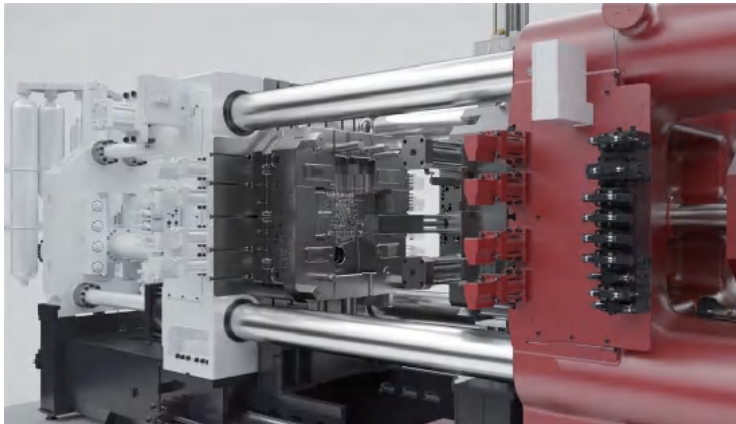
From initial sketches to comprehensive 3D modeling & rendering.

## PROTOTYPING



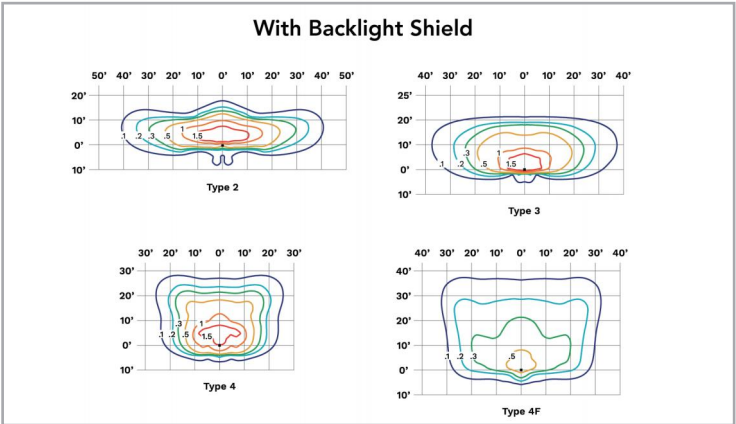
Many years of experience prototyping of one-offs for customer approval.

## DIE CASTING



Extensive experience in creating tools in our in-house facility for a number of processes & materials including diecast aluminum, stamping and punching, plastic injection molding, extrusions, blow molding and thermoforming.

## DESIGN & ENGINEERING



Broad spectrum of services from electrical and mechanical, to optical and photometric engineering.

## TESTING & CERTIFICATION



We have the equipment and the trained personnel for any customer approval, conceivable testing or certification in the lighting & industrial equipment industries

## PRODUCTION



Now we are ready for production. We can do small runs or large ones. We will advise you of the manufacturing efficiencies and cost savings of the different options.

# Manufacturing & Beyond

We have a wide range of processes and materials that we are experts at, and modern well-maintained equipment designed to accomplish most manufacturing tasks.



## 1 STEEL

Stamping, CNC Machining, Laser-Cutting, Welding,Casting, Spinning, Hydro Form, Fabrication, Arc Welding.

## 2 FINISH

Chemical treatment, Polyester powder coat, Wet paint, Galvanized, Anodizing,Vacuum metalizing,Brushed satin, Chrome Nickel, Mirror, & cold-mirror.

## 3 ALUMINUM

High & Low-pressure die-cast, Gravity/Permanent molding, Sand-cast,Spinning, Hydro form, Welding,Fabrication,TIG & MIG Welding.

## 4 BRASS & BRONZE

High-pressure injection, Casting, CNC machining,Fabrication.

## 5 GRP

Injection molding, Compression molding.

## 6 GLASS

Press-Borosilicate & Soda-lime, Water jet cutting, Silkscreen, Tempering, Annealing, Acid treatment & etching.

## 7 PLASTICS

Injection molding, Injection blowmolding,Extrusion, blowmolding, Vacuum forming, Roto-molding.

## 8 ASSEMBLY & FABRICATION

Wiring, Shaping, Welding, Fixture Construction.

## 9 TOOLING

Manufacturing tools for Stamping, Spinning, Hydroform, Injection die-cast, Gravity, Sand-cast, Press glass Extrusion, Injection, Blow-molding, Vacuum, Roto-molding.

## 10 TESTING

Vibration, X-Ray, UL, CSA, ETL, CNC tracing, IP rating, Pressure/explosion testing, Photometric testing,Corrosion salt testing and much more.

# THOROUGH QUALITY CONTROL

## MORELUX OWN LAB

Various reliability tests throughout product development before released



## OUTDOOR SHOWROOM

Withstand real environments With 24hours / 7 days light on as long term reliable waterproof, anti-corrosion and temperatures tests.

## SQC(SUPPLIER QUALITY CONTROL)

Ensuring maximum quality control of raw materials is one of the most basic tenets of us.

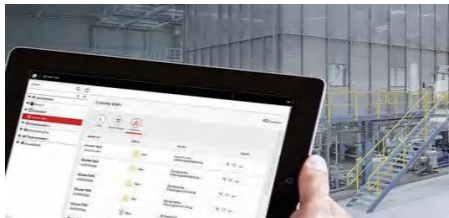
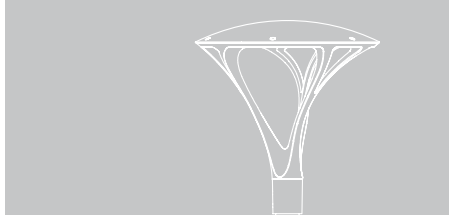
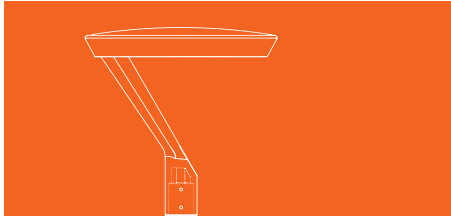
## 11 STAFFS IN QC TEAM

Comprehensive quality control in every production process.





# CONTINUOUS NEW PRODUCTS DRIVING DEVELOPMENT



## CONTINUOUS DESIGN

More than 50 type of new product under development

## EFFICIENT ENGINEERING TEAM

Keeping releasing at least 3-5 new products every month

## PRODUCT UPGRADE

Offer new solutions for additional element, functions, accessories, upgrade 1 year ahead before planned lifecycle.

## CONCENTRATING ON MARKET TREND

Keeping releasing at least 3-5 new products every month

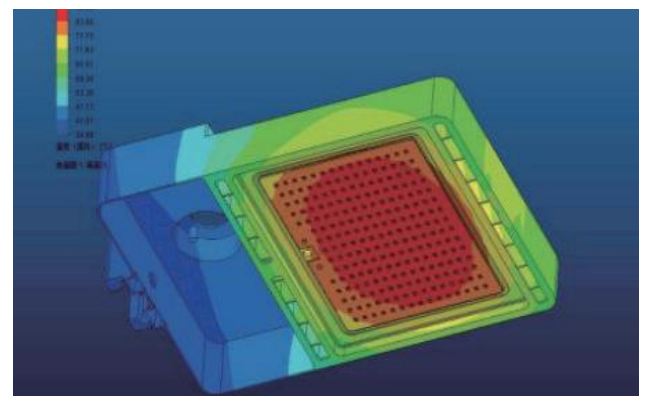
## PRODUCT INNOVATION TEAM

Up-to-date



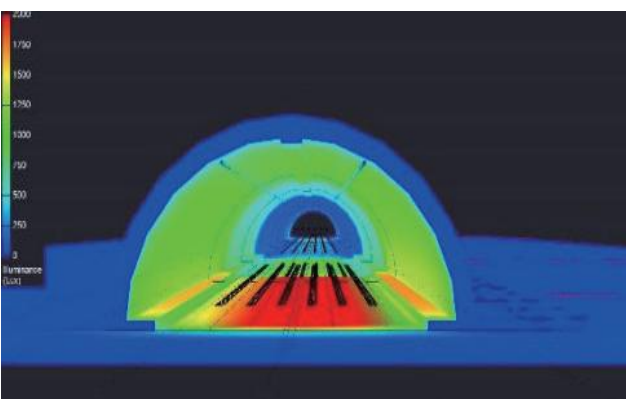
## PRODUCT ENGINEERING TEAM

Versatility and efficient



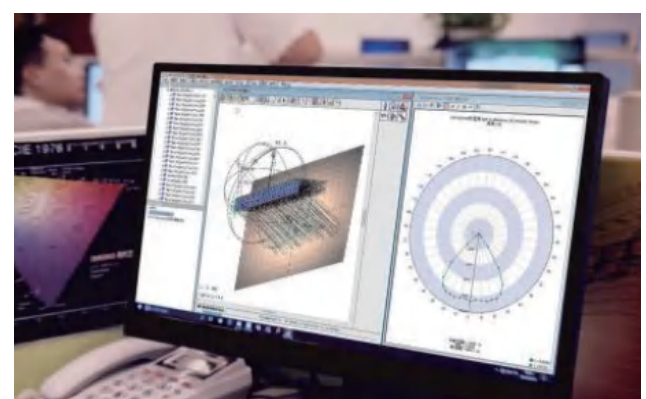
## OPTIC DESIGN TEAM

Precise and Professional



## PRODUCT CUSTOMIZED TEAM

Flexibility



## MORELUX LIGHTING LIMITED

China Office: 17/F Guangbo Mansion, #1357, Yinxian Avenue Yinzhou District, Ningbo, China 315100

US Office: PO Box 697 Conover, North Carolina 28613

China Factory: No.399 Longfei Road, Yunlong Town, Yinzhou District, Ningbo, China 315137

Malaysia Factory: No.14, Jalan Anggerik Mokara 31/50, Seksyen 31, Kota Kemuning, 40460 Shah Alam, Selangor

Tel: +86-574-87979359 / Fax: +86-574-87717000

Email: [info@morelux.com](mailto:info@morelux.com) Web: [www.morelux.com](http://www.morelux.com)