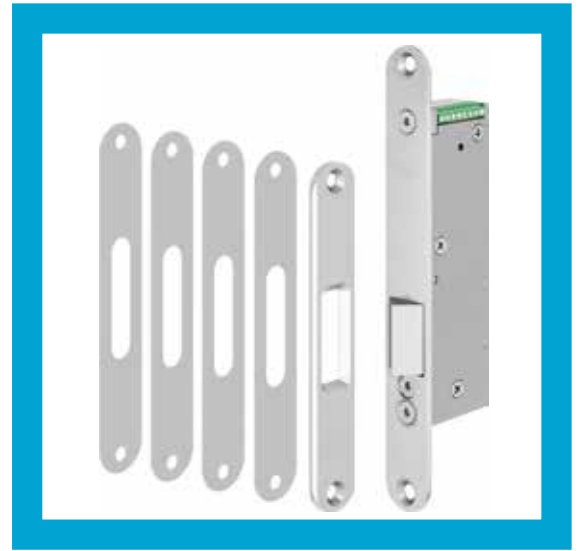


# Electric strikes from effeff



Escape-door lock  
model 352M

 **effeff**  
ASSA ABLOY

Silent and strong escape-door lock

Experience a safer  
and more open world

## Model range 352

### Silent and strong escape-door lock



Locking systems in escape and rescue routes must meet high requirements.

Locking systems in escape and rescue routes must have certain properties and meet higher requirements due to statutory regulations. These requirements for locking elements in safety-sensitive doors are defined in national and European standards.

ASSA ABLOY offers tested and approved security electric strikes especially for use in escape and rescue routes.

effeff security electric strikes are designed as electric locking systems for use under heavy pre-load and for supplementary locking systems on doors along escape routes. The 352M model is suitable for single and double action doors and impresses with its particularly silent operating noise.

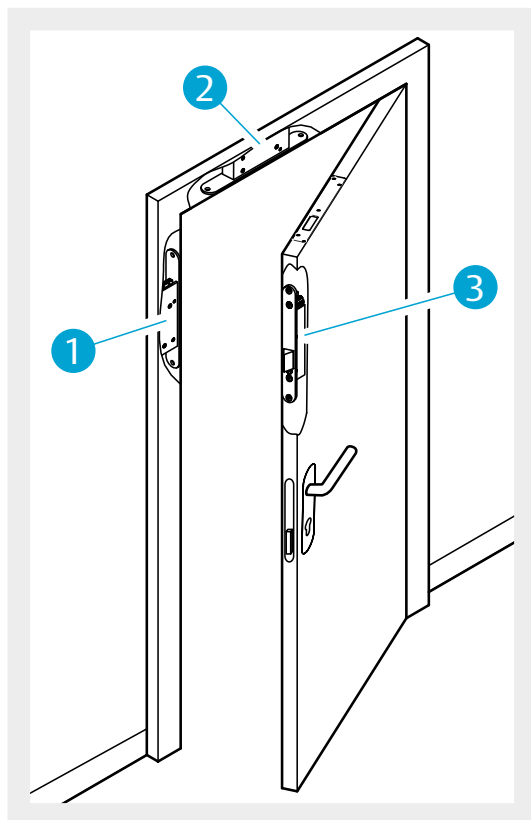
#### Overview of advantages

- Patented escape-door locking system (fail-unlocked)
- Tested and approved in accordance with EltVTR and EN 13637
- For single and double action doors along escape routes
- Installation vertically and horizontally
- Extremely silent locking and unlocking
- No additional closing force
- Very silent during permanent release
- Compatible with 351U and 351M models
- Very high holding force: 5,000 N
- Integrated armature and monitoring contact
- Multi-voltage range from 12 to 24 volts
- Accessories: Surface-mounted housing

## Model range 352

### Silent and strong escape-door lock

Assembly examples:  
The three possible  
mounting positions



#### The operation of the electric strike is very silent

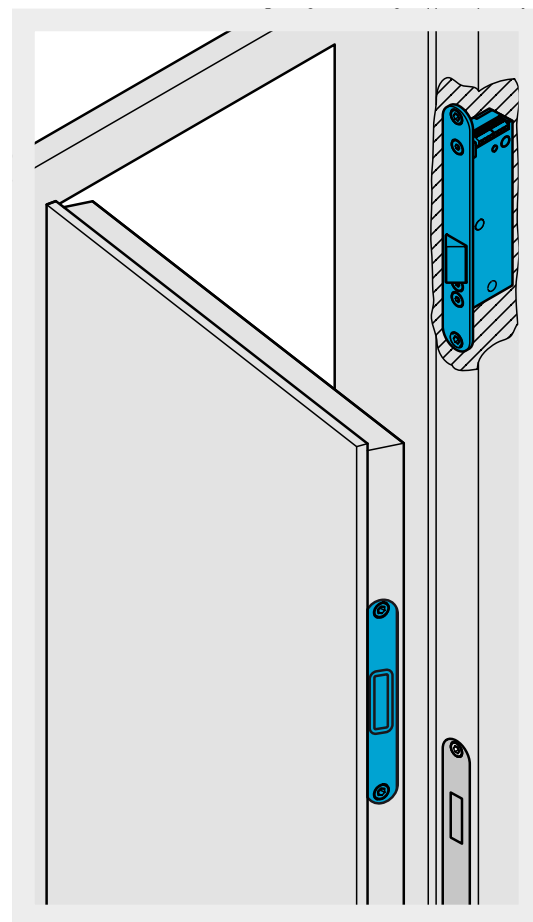
The patented escape-door strike 352M is tested and approved in accordance with EltVTR and EN 13637.

A particular advantage of the escape-door locking system suitable for vertical and horizontal installation is the motorised concept: The door leaf detection is carried out by a contactless sensor. This avoids wear on the door and minimises operating noises – the 352M locks and unlocks very silently. Furthermore, no additional closing force is required for closing. Operation with permanent release is also very silent.

#### High holding force

**The model offers an holding force of 5,000 Newtons**

The motor-driven bolt and its counterpart enable a continuous, standardised profile contour. This maintains a consistent seal layer on the door, which improves sound and heat insulation values and enables a clear, attractive appearance. Thanks to identical installation dimensions, the 352M is compatible with the 351U model and has a very high holding force of 5,000 Newtons. Armature and monitoring contact are integrated. The fail-unlocked lock is available with a multi-voltage range of 12 to 24 V DC. The product range also includes accessories such as a surface-mounted housing.



## Model range 352

### Locking for escape doors and double action swing doors

#### Escape door lock model 352M

Version with strike plate, counterpart and spacer plates

#### The advantages at a glance

- Very quiet locking and unlocking, silent during permanent release
- The 352M escape-door locking system is especially designed as an additional locking system to secure doors along escape routes
- Suitable as an additional locking element in fire doors depending on the door set
- Example for further usage options: double action swing door, revolving doors, interlocking doors, special doors
- Universal installation position, vertical and horizontal in the door frame or door leaf
- Holding force of 5000 N
- Safe unlocking under pre-load of up to 5000 N
- 12V DC to 24V DC multi-voltage, controlled DC voltage
- Monitoring contact and armature contact integrated
- Compatible for installation with models 351U and 351M

#### Electrical data

Input operating voltage	± 15%
Max. current consumption with motor operation (approx. 2 s) 12 V DC	600 mA
Max. current consumption with motor operation (approx. 2 s) 24 V DC	290 mA
Current consumption in continuous operation (locked) 12 V DC	360 mA
Current consumption in continuous operation (locked) 24 V DC	190 mA
Rated voltage	12-24 V DC

#### Characteristics

Monitoring contact (RR)	•
Diode (05)	•
Armature monit. contact	•
Fail-unlocked	•

#### Technical attributes

Max. pre-load	5000 N
Break-in resistance	5000 N
Operating temperature range	-15 °C to +50 °C
Bolt throw	10 mm
Installation position	Universal
Length	200 mm
Width	25 mm
Depth	42 mm
Anchor contact	Yes
Rebate clearance	3 mm (2 mm – 4.5 mm)
Handing	Universal
Bolt material	Steel
Approvals	ElTVTR EN 13637

#### Direction

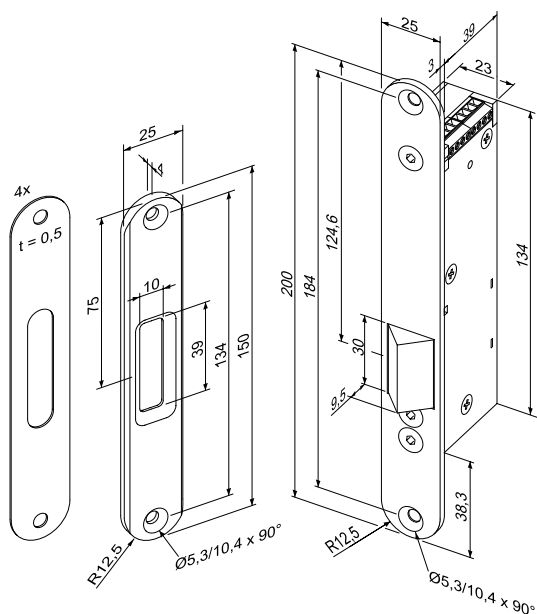
Universal	1
-----------	---

#### Voltage

12/24 V DC	Q9
------------	----

#### Order no.

352M.80----- \* \* \*



## Model range 352

### Locking for escape doors and double action swing doors

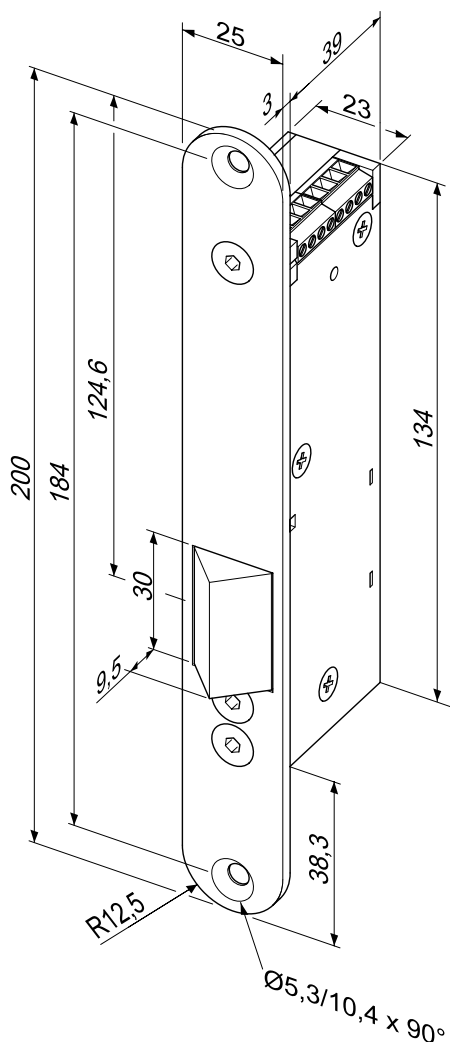


#### Escape door lock model 352M

Version with strike plate, without counterpart and without spacer plates

#### The advantages at a glance

- Very quiet locking and unlocking, silent during permanent release
- The 352M escape-door locking system is especially designed as an additional locking system to secure doors along escape routes
- Suitable as an additional locking element in fire doors depending on the door set
- Example for further usage options: double action swing door, revolving doors, interlocking doors, special doors
- Universal installation position, vertical and horizontal in the door frame or door leaf
- Holding force of 5000 N
- Safe unlocking under pre-load of up to 5000 N
- 12V DC to 24V DC multi-voltage, controlled DC voltage
- Monitoring contact and armature contact integrated
- Compatible for installation with models 351U and 351M



#### Electrical data

Input operating voltage	± 15%
Max. current consumption with motor operation (approx. 2 s) 12 V DC	600 mA
Max. current consumption with motor operation (approx. 2 s) 24 V DC	290 mA
Current consumption in continuous operation (locked) 12 V DC	360 mA
Current consumption in continuous operation (locked) 24 V DC	190 mA
Rated voltage	12-24 V DC

#### Characteristics

Monitoring contact (RR)	•
Diode (05)	•
Armature monit. contact	•
Fail-unlocked	•

#### Direction

Universal	1
-----------	---

#### Voltage

12/24 V DC	Q9
------------	----

#### Order no.

352M---34F35 \* \* \*

#### Technical attributes

Max. pre-load	5000 N
Break-in resistance	5000 N
Operating temperature range	-15 °C to +50 °C
Bolt throw	10 mm
Installation position	Universal
Length	200 mm
Width	25 mm
Depth	42 mm
Anchor contact	Yes
Rebate clearance	3 mm (2 mm – 4.5 mm)
Handing	Universal
Bolt material	Steel
Approvals	EltVTR EN 13637

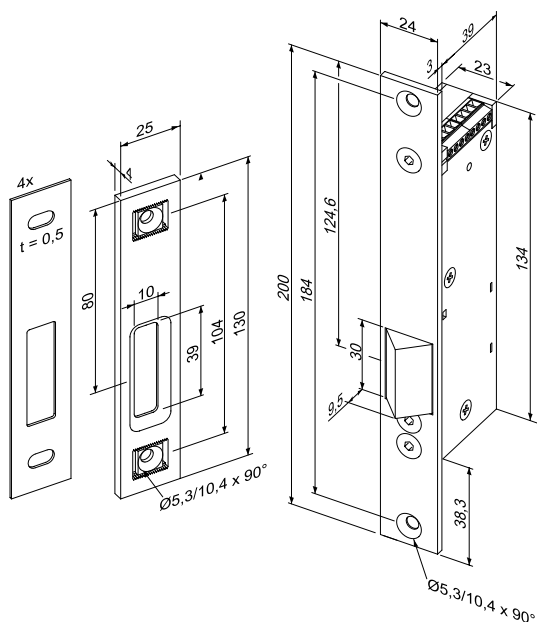


## Escape door lock model 352M

Version with strike plate, counterpart (VarioFix®) and spacer plates

## The advantages at a glance

- Very quiet locking and unlocking, silent during permanent release
- The 352M escape-door locking system is especially designed as an additional locking system to secure doors along escape routes
- Suitable as an additional locking element in fire doors depending on the door set
- Example for further usage options: double action swing door, revolving doors, interlocking doors, special doors
- Universal installation position, vertical and horizontal in the door frame or door leaf
- Holding force of 5000 N
- Safe unlocking under pre-load of up to 5000 N
- 12V DC to 24V DC multi-voltage, controlled DC voltage
- Monitoring contact and armature contact integrated
- Compatible for installation with models 351U and 351M



### Electrical data

Input operating voltage	± 15%
Max. current consumption with motor operation (approx. 2 s) 12 V DC	600 mA
Max. current consumption with motor operation (approx. 2 s) 24 V DC	290 mA
Current consumption in continuous operation (locked) 12 V DC	360 mA
Current consumption in continuous operation (locked) 24 V DC	190 mA
Rated voltage	12-24 V DC

### Characteristics

Monitoring contact (RR)	•
Diode (05)	•
Armature monit. contact	•
Fail-unlocked	•

### Technical attributes

Bolt throw	10 mm
Anchor contact	Yes
Installation position	universal
Rebate clearance	3 mm (2 mm – 4.5 mm)
Operating temperature range	-15 °C to +50 °C
Handing	universal
Break-in resistance	5000 N
Length	200 mm
Width	25 mm
Depth	42 mm
Max. pre-load	5000 N
Bolt material	Steel
Approvals	EltVTR EN 13637

### Direction

Universal	1
-----------	---

## Voltage

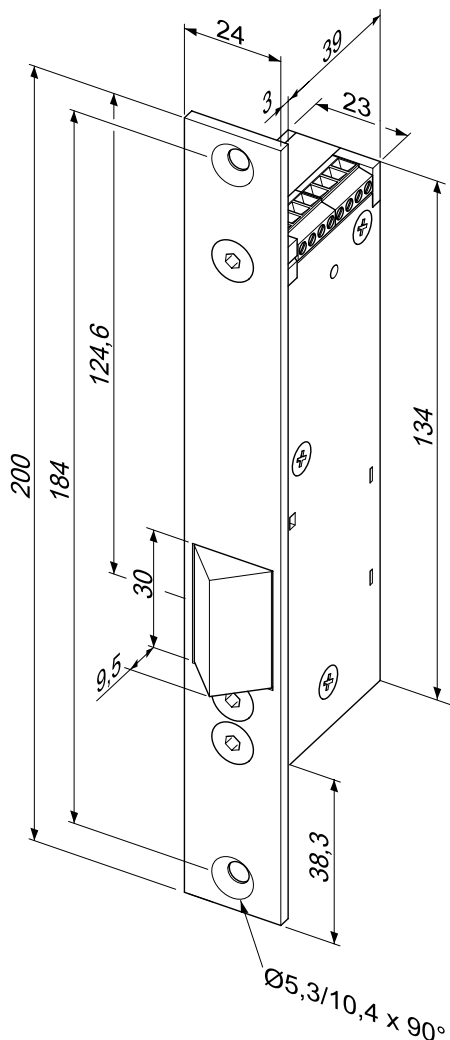
12/24 V DC	Q9
------------	----

## Order no.

352M.85----- \* \* \*

## Model range 352

### Locking for escape doors and double action swing doors



#### Escape door lock model 352M

Version with strike plate, without counterpart and without spacer plates

#### The advantages at a glance

- Very quiet locking and unlocking, silent during permanent release
- The 352M escape-door locking system is especially designed as an additional locking system to secure doors along escape routes
- Suitable as an additional locking element in fire doors depending on the door set
- Example for further usage options: double action swing door, revolving doors, interlocking doors, special doors
- Universal installation position, vertical and horizontal in the door frame or door leaf
- Holding force of 5000 N
- Safe unlocking under pre-load of up to 5000 N
- 12V DC to 24V DC multi-voltage, controlled DC voltage
- Monitoring contact and armature contact integrated
- Compatible for installation with models 351U and 351M

#### Electrical data

Input operating voltage	± 15%
Max. current consumption with motor operation (approx. 2 s) 12 V DC	600 mA
Max. current consumption with motor operation (approx. 2 s) 24 V DC	290 mA
Current consumption in continuous operation (locked) 12 V DC	360 mA
Current consumption in continuous operation (locked) 24 V DC	190 mA
Rated voltage	12-24 V DC

#### Characteristics

Monitoring contact (RR)	•
Diode (05)	•
Armature monit. contact	•
Fail-unlocked	•

#### Direction

Universal	1
-----------	---

#### Voltage

12/24 V DC	Q9
------------	----

#### Order no.

352M---54G35 \* \* \*

#### Technical attributes

Bolt throw	10 mm
Anchor contact	Yes
Installation position	universal
Rebate clearance	3 mm (2 mm – 4.5 mm)
Operating temperature range	-15 °C to +50 °C
Handing	universal
Break-in resistance	5000 N
Length	200 mm
Width	24 mm
Depth	42 mm
Max. pre-load	5000 N
Bolt material	Steel
Approvals	EltVTR EN 13637

# Model range 352

## Accessories



Counterpart (VarioFix®) with spacer plates

Technical attributes	
Dimension	130 x 25 x 4 mm
Surface/Material	Stainless steel

Order no.
SET352E-25---00



Counterpart with spacer plates

Technical attributes	
Dimension	150 x 25 x 4 mm
Surface/Material	Stainless steel

Order no.
SET352R-25---00



Surface-mounted housing with VarioFix®  
adjustment for 352M.80 and 351M.80

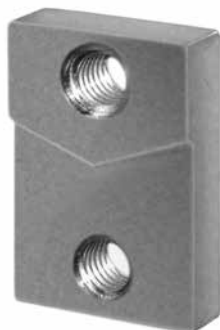
Technical attributes	
Dimension	207 x 31 x 44,5 mm
Surface/Material	Stainless steel
Installation position	universal

Order no.
-----A1035-01



## Model range 352

### Accessories



#### Screw-on mounting plates model SET-LA-M5

For flush mounting of strike plates especially in steel frames

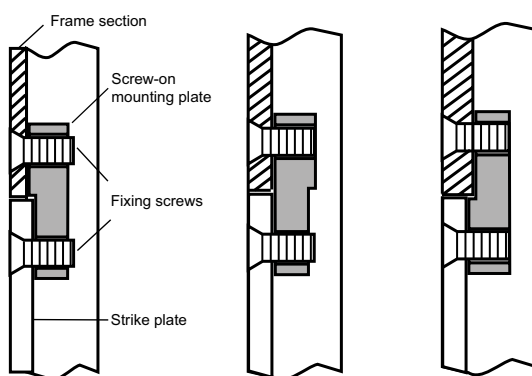
#### Technical attributes

Version	Radius, 2 pieces
Threaded hole	M5

#### Order no.

**SET-LA-M5----00**

Mounting example for  
3 mm strike plate in steel  
frames of 2, 3 and 4 mm



Customer No.:

Sender

Company

Industry

Contact

Phone

Fax

E-Mail

Address / P.O. Box

City / postcode

Date

ASSA ABLOY  
Sicherheitstechnik GmbH

Bildstockstraße 20  
72458 Albstadt  
GERMANY  
Tel. +49 7431 123-700  
Fax +49 7431 123-258  
export.effeff@assaabloy.com

Article code	Quantity

Quick orders -  
also by e-mail:

As a proven partner for electric strike systems Assa Abloy is well known for their reliable and fast deliveries. Hereby we offer you two methods for ordering: you can fax us the filled form or send us your requests by e-mail to the following address: **export.effeff@assaabloy.de**

Conditions of delivery  
and payment:

The acceptance of the order and the delivery are based on our general terms and conditions. Upon request they could be sent.

On the internet you can find the general terms and conditions: **www.assaabloyopeningsolutions.de**



Also in future we comply with the requirements for further technical development and innovation. That's why we reserve the right for changes in construction. Even illustrations could differ from real products in individual cases.

Despite greatest care printing errors or mistakes could occur.

ASSA ABLOY assumes no liability for this and does not enter into a commitment.

All printed safety regulations without engagement.

The ASSA ABLOY Group is the global leader  
in access solutions. Every day we help  
people feel safe, secure and experience  
a more open world.

**ASSA ABLOY**  
Opening Solutions

ASSA ABLOY  
Sicherheitstechnik GmbH  
Bildstockstraße 20  
72458 Albstadt  
GERMANY  
Tel. +49 7431 123-700  
Fax +49 7431 123 258  
[albstadt@assaabloy.com](mailto:albstadt@assaabloy.com)  
[www.assaabloyopeningsolutions.de](http://www.assaabloyopeningsolutions.de)