



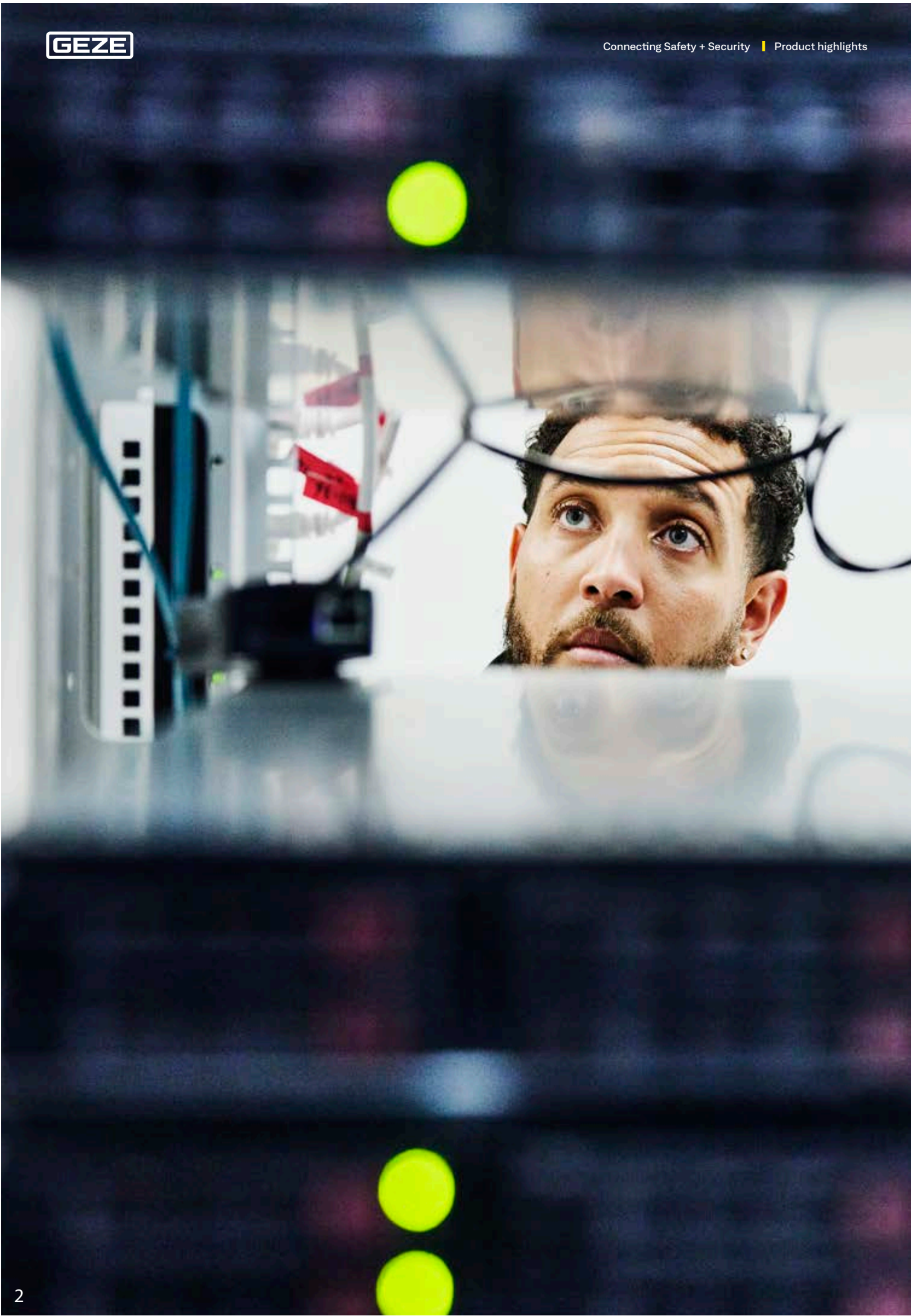
CONNECTING

Safety+

Security







## Connecting Safety + Security

—— Editorial	05
—— Connecting Safety + Security	06
—— myGEZE Connectivity World	08
—— The next generation of networking	10
—— Automated escape route door with hold-open system and emergency exit system (RWS)	12
TZ 320 stainless steel door control unit	12
Powerturn F/R swing door drive	12
GC 342 laser scanner	13
IQ lock EL electronic motor lock	13
FTV 320 escape door lock	13
—— Smoke and heat extraction system	14
MBZ 300 modular bus control panel	14
Slimchain chain drive	15
Powerchain chain drive	15
Power lock locking drive	15
—— Networked ventilation control	
GEZE IQ box KNX	16
GEZE IQ box safety	18
—— A4000 vector electric strike	20
—— Services provided by GEZE	22
—— Innovative solutions for your building	24

### Picture credit

01, 02, 04, 07:	Getty Images Deutschland GmbH
11:	Jürgen Pollak / GEZE GmbH
19:	Exorbitart / GEZE GmbH
21:	Getty Images Deutschland GmbH
25:	Karin Fiedler / GEZE GmbH



# Driving forward smart solutions together!

Realising buildings in harmony with people and the environment is a great task. And sometimes a challenge, too.

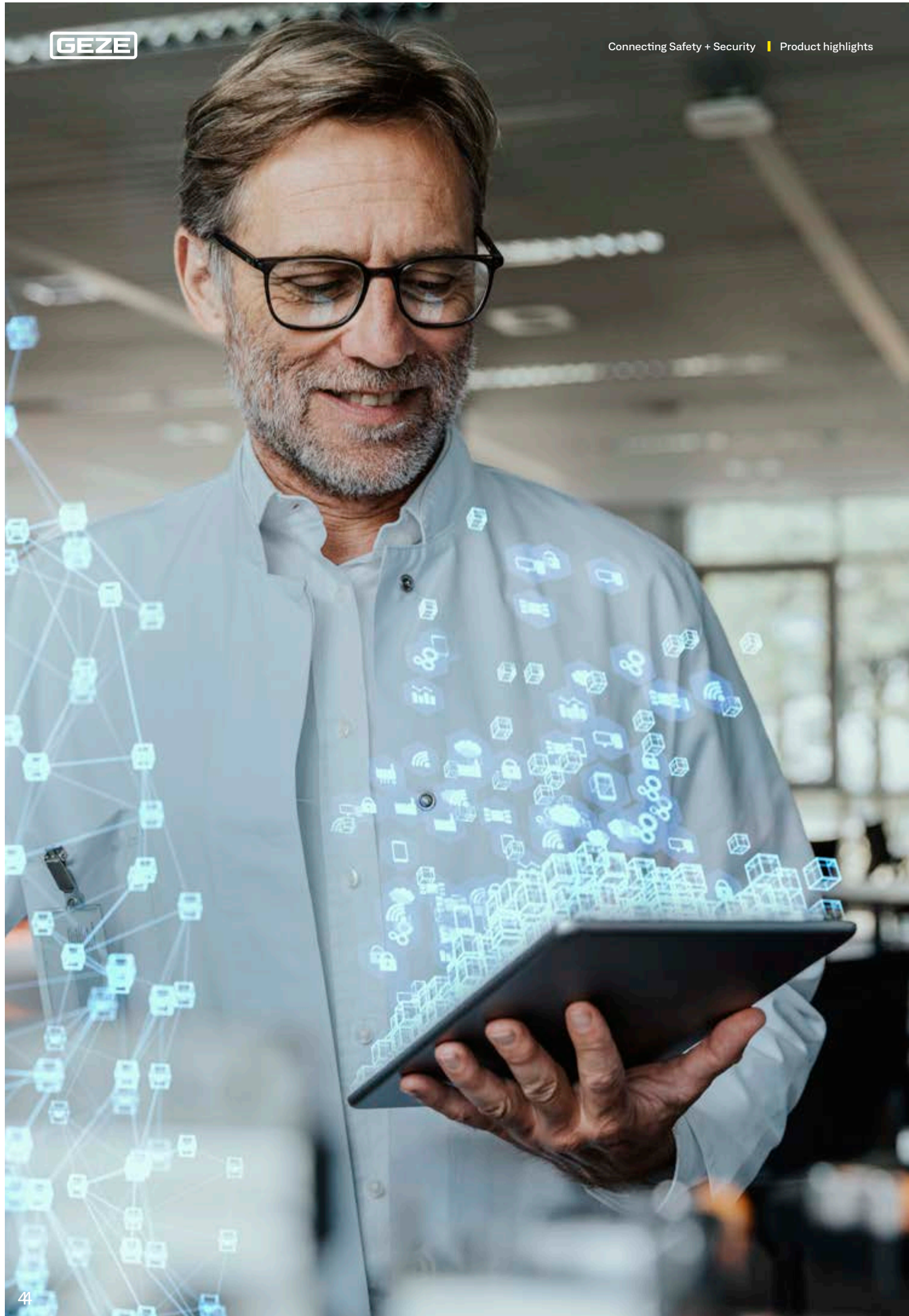
Benefit from our long experience and development expertise to create smart façades, networked solutions and natural ventilation concepts.

Together, let's drive forward smart solutions for building automation.

While never losing sight of the bigger picture.

Our approach: provide optimal support to all stakeholders involved in the building life cycle and connect relevant interfaces – for the realisation of liveable buildings.

**Connecting expertise – building solutions.**





# CONNECTING Safety+ Security

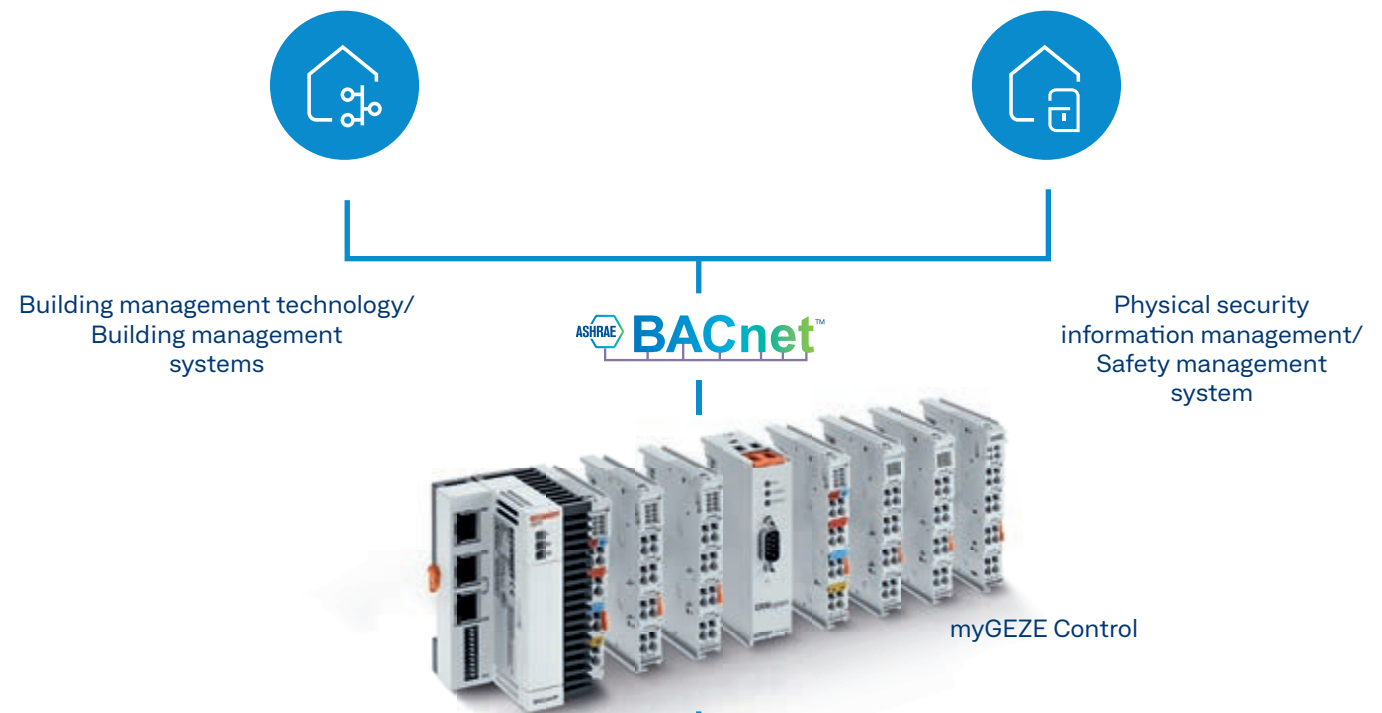
Integrated, networked safety technology and intelligent building automation for liveable buildings of the future: as a global market leader in products, systems and services for door, window and safety technology, we bring you innovative solutions, and show you what modern smoke and heat extraction systems and emergency exit systems are all about, with a particular focus on BACnet and KNX networking.

## **Discover the next generation of networking: myGEZE Control**

Whether in office buildings, industrial buildings or hotels: the myGEZE Control connectivity platform enables simple integration into a higher-ranking building management system with the BACnet or KNX communication standard. Interdisciplinary networking in smart buildings creates new opportunities for safe, comfortable and energy-saving operation of buildings.







# myGEZE

## Connectivity World

### EMERGENCY EXIT SYSTEM



1. TZ 320
2. Powerturn F/R
3. GC 342 laser scanner
4. IQ lock EL
5. FTV 320
6. Slimdrive SL NT-FR-RWS

### SMOKE AND HEAT EXTRACTION SYSTEM



1. MBZ 300
2. THZ Comfort
3. Power lock
4. Powerchain
5. Slimchain

### FIRE PROTECTION DOORS WITH HOLD-OPEN SYSTEMS



1. RSZ 7
2. Boxer EFS
3. TS 5000 RFS

### NETWORKED DOOR SYSTEMS



1. Slimdrive EMD
2. Powerdrive FR
3. Revo.PRIME

### NETWORKED VENTILATION CONTROL



1. IQ box KNX
2. IQ box Safety
3. GC 342 laser scanner
4. LTA-24-AZ vent switch
5. Slimchain





myGEZE Control

# The next generation of networking

— With myGEZE Control, we are closing the gap in building automation with a smart solution for the networking of door, window and safety systems. The myGEZE Control connectivity platform with modular software and open interfaces heralds completely new approaches to building automation for planners and operators everywhere.

- For greater efficiency, safety and comfort
- For dynamic safety and fire protection concepts, intelligent smoke and heat extraction and the targeted release of escape routes
- For modular automation and more opportunities

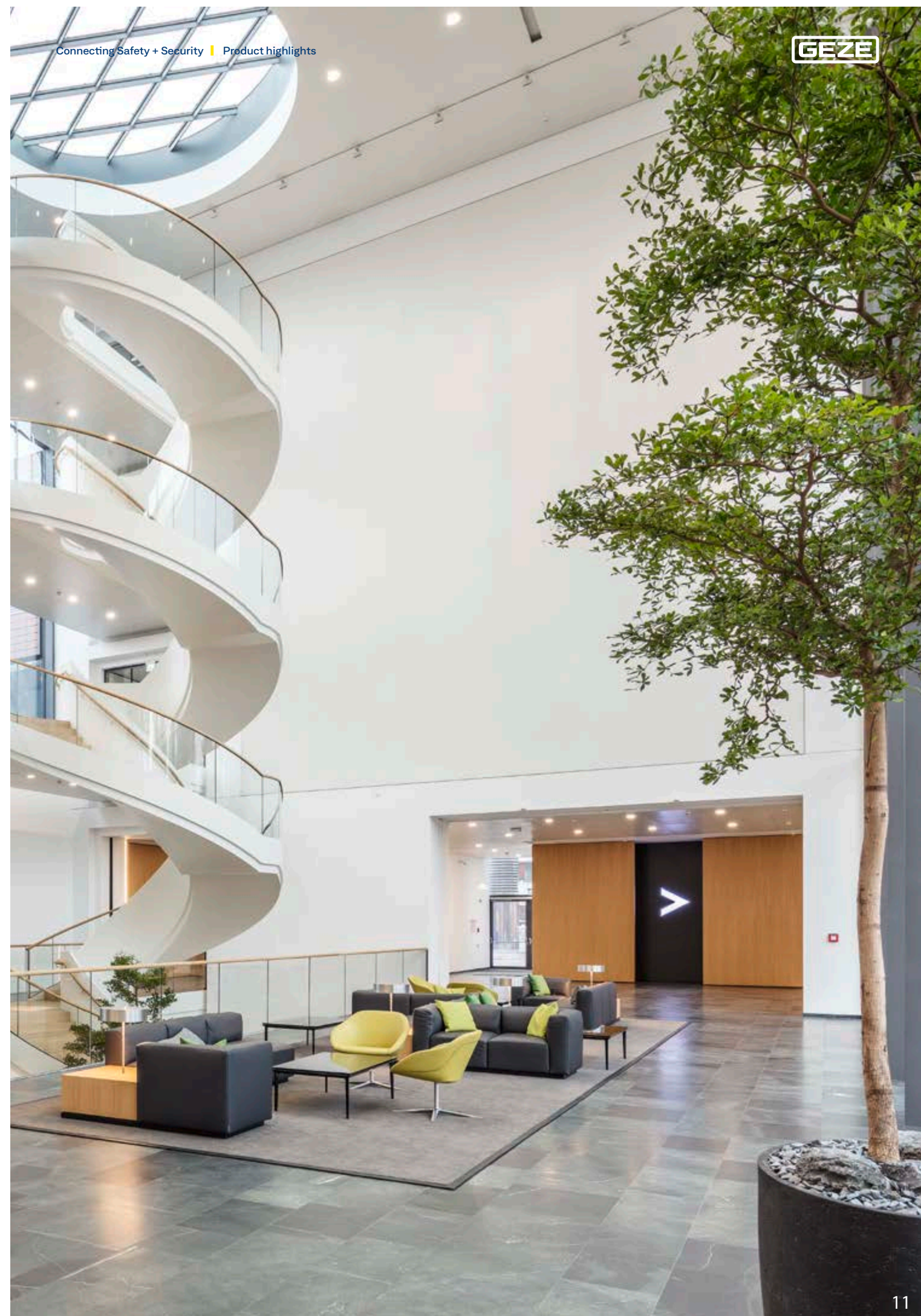
## COMPACT

- Efficient and safe building automation system for GEZE products
- Depending on the configuration of the hardware, up to 100 GEZE products can be connected
- Safe data exchange via the BACnet and KNX communication standard

— Central device is a standard control unit (SPS). The hardware component comprises an embedded PC control system with a certified BACnet communication interface. Depending on what the customer needs, various hardware and software packages can be installed and configured.

The advantages of the new platform: Automated processes and central monitoring make usage easier, more comfortable and safer – while also enabling energy-efficient operation of the entire building. So you have complete control!

- BTL certified in accordance with BACnet standard ISO 16484-5
- High-performance hardware for installation in control cabinets (top hat rail mounting)
- BACnet device profile BACnet Building Controller B-BC





Connecting+  
myGEZE Control

## EMERGENCY EXIT SYSTEM

# Automated escape route door with hold-open system and emergency exit system

The myGEZE Control building automation system enables the release of emergency exit protection systems. Door control units, such as the GEZE TZ 320, can be monitored, and give feedback on fault reports and alarm statuses.

## COMPACT

## TZ 320 door control unit

- Flat impact cover enables secure activation
- Coloured connectors facilitate the electrical connection
- Freely configurable inputs and outputs offer countless possibilities for further components
- Number of inputs and outputs can be expanded
- Complies with standards in accordance with EN 13637

New!  
EN 13637

## Powerturn F/R automatic swing door drive

- Drive for single and double leaf swing doors
- Statement of approval for heavy fire protection doors
- Smoke switch control unit integrated invisibly in the cover
- Smart swing function for easy manual accessibility
- Opening and closing even in adverse conditions (varying air pressures acting on the door leaf, etc.)
- Installation is fast and easy
- Leaf widths up to 1,600 mm or leaf weight up to 600 kg
- Construction height of just 7 cm

## COMPACT

## GC 342 laser scanner

- Laser scanner with complete door leaf protection
- Can be combined with all GEZE swing door drives for leaf widths up to 1,600 mm
- 'One push button commissioning' and automatic teach-in function
- Integrated wall blanking
- Complete door protection including secondary closing edge
- Fast, intelligent installation and commissioning



## COMPACT

## IQ lock EL electronic motor lock

- Motor lock for single leaf swing doors
- Cross latch construction for fast, jam-free unlocking
- Modes of operation in different versions (e.g. permanently night, hold open, etc.)
- Evaluation of potential-free contacts
- Forwarding to a monitoring system



## COMPACT

## FTV 320: Safe unlocking, safe escape route

- Electrical escape door lock in connection with TZ 320 door control units
- Secures escape routes against unauthorised access
- Strong hold of more than 5,000 N thanks to tripe lock latch construction
- Reliable unlocking in the event of danger, even under high preload
- Protected against vandalism thanks to signalling of sabotage attempts
- Various installation variants
- Easy and fast installation



## SHEV CONTROL PANELS

# Smoke and heat extraction system

The modular MBZ 300 SHEV control panel takes over control of the smoke and heat extraction system. In combination with the GEZE bus interface module, the MBZ 300 can be integrated in the building management technology, and extensive ventilation scenarios can be realised.

## COMPACT

**MBZ 300: flexible control panel**

- Bus control panel for when smoke and heat extraction is needed, and for daily ventilation
- When smoke and heat extraction is needed, takes over the power supply, coordination and monitoring of all connected opening systems
- Flexible modular concept is simple to expand
- Creates complex smoke and heat extraction systems via PC software
- Configurable ex-works as an individual solution
- Can be used as a central control panel or in the form of multiple networked control panels

**THZ N4 and THZ Comfort N4 SHEV control panels**

- Plastic housing (THZ) or metal housing (THZ Comfort) with integrated SHEV and ventilation buttons
- Compact staircase control panel with an output power of 4.5 A
- New connector for the motor line makes wiring considerably easier
- Individual adjustment thanks to parameter setting (ST 220 interface)

## COMPACT

**Powerchain: True power pack**

- Strong chain drive for heavy façade windows, roof windows and skylights
- Suitable for natural ventilation, smoke and heat extraction systems and natural smoke and heat exhaust ventilation devices
- Reaches high opening speeds when smoke and heat extraction is needed
- Different stroke variants of 600 mm, 800 mm and 1,200 mm
- Individually adjustable drive stroke and speeds
- Easy synchronisation of up to four drives without external control device

**Slimchain: Slim all-round talent**

- Compact chain drive for an unobtrusive façade design
- Suitable for natural ventilation, smoke and heat extraction systems and natural smoke and heat exhaust ventilation devices
- Different stroke variants of 300 mm, 500 mm and 800 mm
- Individually adjustable drive stroke and speeds
- Easy synchronisation of up to four drives without external control device



## COMPACT

**Power lock: Safe locking mechanism**

- Locking drive for large windows
- Can be used for frame and leaf installation
- Flexible retrofitting with the chain and spindle drives
- Can be used with Slimchain, Powerchain and the E 250 NT spindle drive in natural smoke and heat exhaust ventilation devices
- For use with standard market central locking devices
- Simple commissioning and automatic closing sequence control







GEZE IQ box KNX

# Windows and components in direct dialogue

— **Natural, energy-efficient fresh air supply** – completely on demand and always controllable: The GEZE IQ box KNX interface module enables direct integration of the GEZE window drives (IQ windowdrives) in the KNX building systems. This then allows for dialogue with additional KNX capable components, for example push buttons and sensors. Unlike simple switch actuators, the IQ box KNX accesses the intelligence of the window drives and reports the status of a window back to the KNX building system or the building management system after a 'command' has been executed. Likewise, further window information is made available via the module, for example the exact opening width.

## COMPACT

- Precisely positioned activation of the GEZE IQ windowdrives
- Safe integration into the KNX world
- Simple and time-saving installation and commissioning
- Scalable system – according to requirement
- Reliable status report from every automated window
- More efficient window monitoring





Connecting+  
myGEZE Control



GEZE IQ box Safety

# Safe ventilation with power-operated windows

— The IQ box Safety is a new product solution for **safe ventilation**. With the IQ box Safety as a maximum safety TÜV-tested solution, power-operated windows can be secured up to protection class 4. The IQ box Safety is suitable for closing edge protection on automated windows with drives from the 24 V IQ windowdrive series, and enables the connection of safety edges and non-contact sensors. One IQ box Safety connects up to four window drives and two locking drives per window. It is suitable for natural ventilation and smoke and heat extraction, and for all activations (e.g. SHEV control panel, 24 V power supply, KNX, IQ gear). It thus offers planners and architects high flexibility and creative freedom when designing ventilation and smoke and heat extraction system windows.

## COMPACT

- Complies with highest protection class requirements in accordance with Machinery Directive protection class 4
- TÜV-tested functional safety in accordance with DIN EN 13849-1
- Simple and speedy commissioning thanks to pre-set standard parameters
- Four sensor connections, can be assigned with safety edges and/or non-contact sensors
- Top hat rail module with pluggable terminals for quick and easy wiring
- Integrated push button for manual closing of the windows during servicing







## A4000 VECTOR ELECTRIC STRIKE

# Perfect fit for comfort and design

Electric strikes are indispensable aids at highly frequented entrance doors. GEZE A4000 vector electric strikes are an optimum solution here. Their particular strength is almost noiseless opening with direct current – including under high preload and with no additional electronics.

With their small dimensions, A4000 vector electric strikes offer door manufacturers, installation engineers, architects and planners new design possibilities, and high planning security. The variants with optional Kingfix lock latch guide support unobtrusive door designs. Recesses on the door profile can be reduced to a minimum. This means that door seals are not compromised. This makes the A4000 with Kingfix lock latch guide the optimum component when increased thermal and sound proofing are important.

### COMPACT

- High retention forces of 5,000 N
- Symmetrical design: Left hand door/right hand door as well as vertical or horizontal installation
- Integrated bipolar EMC protection diode
- Very quiet opening under preload
- Small dimensions: 15.8 x 73.5 x 25 mm
- Can be combined with standard market strike plates
- Large operating voltage range thanks to twin coil technology
- Numerous variants meet the most diverse stipulations





## SERVICES PROVIDED BY GEZE

# Fast, efficient, reliable

**Customer satisfaction takes top priority at GEZE. From the initial consultation and customised solutions through to commissioning, regular maintenance and training: services provided by GEZE reliably ensure greater planning security and reduce the effort and costs involved in your day-to-day work.**

—— **Data packages for LogiKal (Orgadata): efficiency for planning.** Planners and metal processors can also access GEZE product data when planning, calculating and constructing façades. The LogiKal software solution from Orgadata optimises planning and manufacturing processes, and saves time and costs. The technical data for GEZE products can easily be included in the calculation and planning as package solutions at the click of a mouse, and integrated in further manufacturing processes. Special wishes can also be accommodated without any problem. This means that even technically perfect complex systems can be planned and manufactured without complications.

—— **GEZE Customer Solutions: freedom of design with special solutions.** With GEZE Customer Solutions, customers benefit from sophisticated, individual and special solutions that offer the best possible safety and convenience. And all from a single source. A central contact person is available for any questions, from the initial idea through to commissioning. Whether it's about special building requirements, traffic access applications, or solutions for machinery and plant. Customised solutions from GEZE meet every requirement.

### COMPACT

- Optimum planning and manufacturing processes
- Flexible choice and combination of GEZE products
- Broad scope of functions and simple use
- Efficient, precise planning and manufacture of solutions to meet requirements

### COMPACT

- Advice on individual requirements, nationally and internationally
- Creation of customised, cross-product (special) solutions, e.g. for buildings, ships, trains, transport vehicles or machinery
- Coordination of interfaces for specific requirements
- A central point of contact for any questions





## INNOVATIVE SOLUTIONS FOR YOUR BUILDING

# With us, tomorrow arrived today



### Windows

GEZE window systems considerably increase comfort and safety in buildings. At the same time, they reduce energy consumption, and offer a wide variety of options, both visually and functionally. The range extends from drive systems for natural ventilation and exhaust through to complete solutions (smoke and heat extraction systems) for preventive fire protection.



### Building automation

Building automation makes your building more liveable: more comfortable, safer, and more energy-saving. Indispensable in larger buildings, it enables monitoring and operation of the entire building technology. For efficient building management in the smart building, we offer you a unique range of networking solutions.



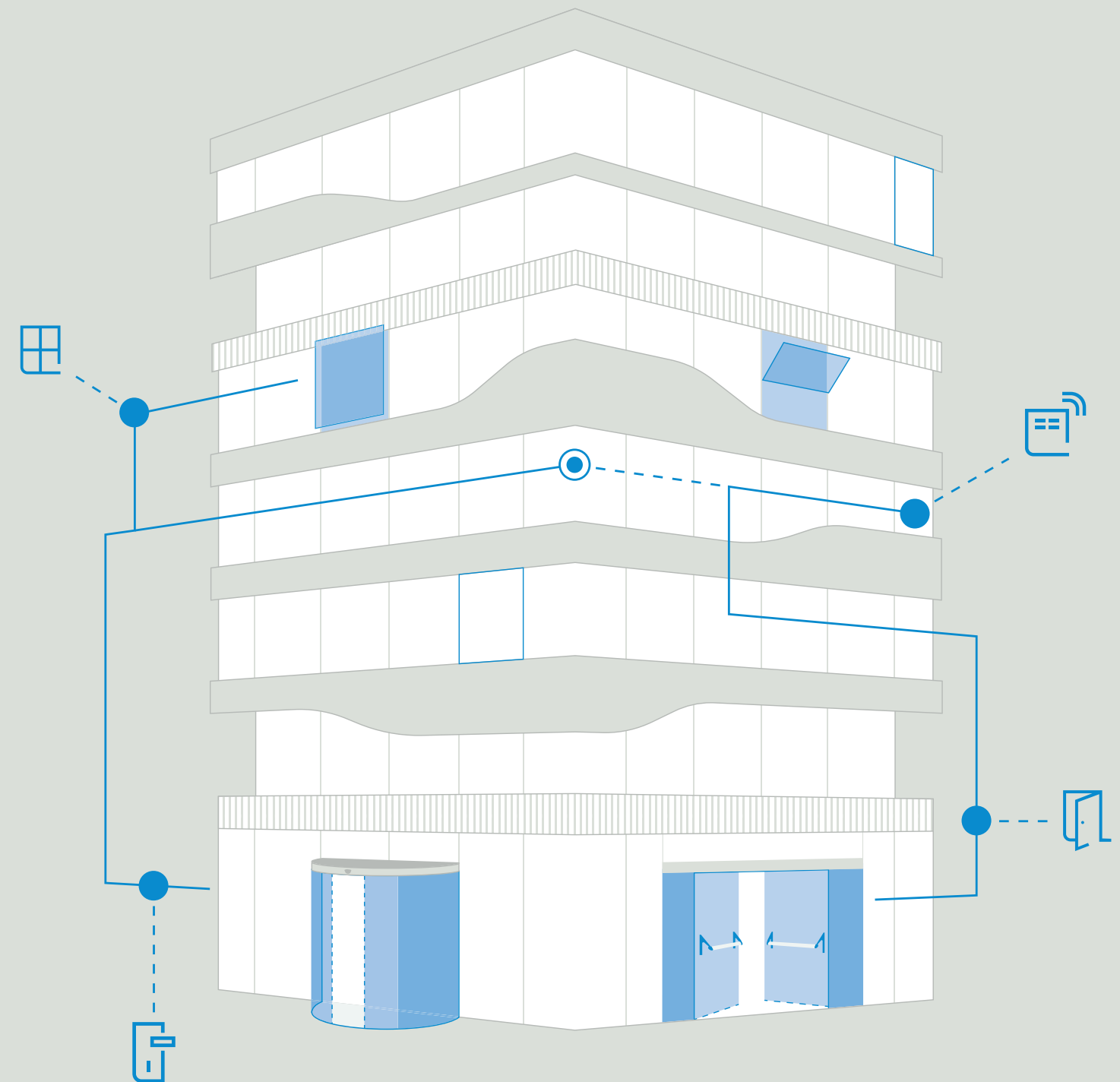
### Safety systems

GEZE safety technology sets the standard in preventive fire protection and protection against theft in escape and rescue route. For each of these objectives, GEZE offers individual solutions and perfectly coordinated concepts that combine individual safety requirements in an intelligent system.



### Door systems

Door systems from GEZE open up the most diverse possibilities in door design. They are characterised by the latest innovative and high-performance drive technology, safety, barrier-free ease of access, and first-class universal drive design.





Space  
to create.

