

NOW PDM

[illegible]

datatex
we make IT work for you

Business Software Solutions Specialized for:

Textiles, Apparel, Home Fashions, Technical Fabrics, Accessories, Nonwovens, Rolled Goods, Floor Coverings

Textiles Automotive Textiles BOM Recipes Print Design Weaving/Warping Pattern Dynamic Process flow Size/Color Matrix Specification sheets Product Coding Multiple UM's Sales Inventory Production Purchasing Planning Scheduling Shop-Floor Fabric Inspection Business Intelligence Fiber Yarn Fabric Nonwovens Floor Covering Garment Home Textiles Industrial Textiles Automotive Textiles BOM Recipes Print Design Weaving/Warping Pattern Dynamic Process flow Size/Color Matrix Specification sheets Product Coding Multiple UM's Sales Inventory Production Purchasing Planning Scheduling Shop-Floor Fabric Inspection Business Intelligence **we make IT work for you**

WHY PDM?

This new opportunity from the IT world helps businesses make the right decisions, providing:

- The right information, with complete, up-to-date and secure content;
- To the right people: sharing only the content useful to each person's role;
- At the right time: the system provides the information without users having to look for it.

Product Development Management is a strategic and integrated approach, based on organizational technologies and methodologies. It is a primary requirement for properly managing information, processes and resources to support the product development cycle. Product and process knowledge is key to achieving business success. Even in today's digital age, however, most companies still struggle to use this knowledge as a manageable resource from one business opportunity to the next.

- Companies using PDM will reduce development costs, reduce sample processing inefficiencies and increase speed to market for new products;
- Companies using PDM will optimize process documentation and supplier information;
- Companies adopting PDM can start to better apply BPR processes (Business Process Reengineering), having studied and streamlined internal product development processes.

WHY NOW PDM?

Companies need a PDM system that can support the specific needs of their business. Companies implement product life cycle and product data management (PLM/PDM) systems to provide their subsidiary companies with access to a single source of product and process knowledge by implementing NOW PDM, companies can develop production plans that also involve outsourcing to service providers, performing work for third parties, or making their production cycles available to other companies. Companies that implement NOW PDM can use advanced methodologies to solve management and production challenges. Once a PDM system is in place, the company can leverage it to improve productivity, reduce product lifecycle costs, facilitate global collaboration, and provide proper visibility for better business decisions. **NOW PDM** manages all product data and product development steps and tracks changes and approvals of all versions. **NOW PDM** enables companies to manage all product and process knowledge in a single, **secure but accessible system** that can be used by **multiple applications and multiple teams** within a company's organizational chart.

NOW PDM enables, product information to be coordinated and synchronized, allowing companies to:

- Ensure secure data management;
- Improve productivity and reduce time;
- Reduce errors and development costs;
- Facilitate collaboration with anyone, anywhere;
- Improve value chain organization and planning;
- Increase visibility with a view to improving business decisions.

FEATURES

NOW PDM is PDM software that gathers and organizes documents and data relating to the whole product lifecycle: concept, design, production and obsolescence. NOW PDM is specifically designed for textile and fashion companies (clothing, accessories and footwear, etc.). The flexibility and modularity of NOW PDM enables easy integration and data-interchange with CAD and ERP systems. NOW PDM features span the scope of company activities, linking users with different tasks and responsibilities, enabling interfacing with account managers and related software, and integrating with the company ERP to manage the whole Product Lifecycle (PLM).

Configured for your company

NOW PDM is PDM software that gathers and organizes documents and data relating to the whole product lifecycle: concept, design, production and obsolescence. NOW PDM is specifically designed for textile and fashion companies (clothing, accessories and footwear, etc.). The flexibility and modularity of NOW PDM enables easy integration and data-interchange with CAD and ERP systems. NOW PDM features span the scope of company activities, linking users with different tasks and responsibilities, enabling interfacing with account managers and related software, and integrating with the company ERP to manage the whole Product Lifecycle (PLM).

Lifecycle management

Particular care has been taken in developing tools to manage the product lifecycle and design workflow. The various lifecycle steps can then be defined by item type or attribute, validation, notification or protection rules can be assigned to each, and priorities can be set up between steps.

The documents attached to the product are automatically organized and archived in the file system. Versioning, archiving and obsolescence are also supported.

Global Software

Native multi-language management and modern web-services-oriented technologies make NOW PDM the ideal product co-development tool, eliminating the language gap. Thanks to the web, product development and information sharing have evolved from local to global activities.

Product types and technical data

Unlike other PDM/PLM products, NOW PDM does not have a fixed and preconfigured product coding structure. NOW PDM uses fully configurable objects that allow different product types to be modelled, from raw materials to the finished product.

Filters and Searches

Flexible and powerful, the NOW PDM search engine allows you to immediately retrieve any type of information managed or related to a product. All filters can be set by product type.

Each data grid manages natively dynamic filters, individual column sorting (Excel style) and grid layout customization, with the ability to quickly export data in Excel format. Any product type can be set up to manage BoMs and routings, allowing multi-level BoMs and alternative routings to be defined.

Fashion-oriented features

- **Needs-per-Size grid:**

NOW PDM makes it easy to enter data relating to component needs per size, providing specific and user-friendly interfaces and an auto-complete wizard.

- **Details:**

A special tab manages the positioning of product details and assembly information: labels, logos, buttonholes and buttons.

- **Parts master file:**

A special tab allows product part measurement details to be entered, together with their tolerance percentages.

- **Additional pictograms:**

Different sets of graphic and intuitive can be selected for the product, in addition to the washing instruction symbols.

Colors grid					Availability Quantity Code		
	3 02 COTTON 60/2 DYED CO602N32-8480 Y 1 MT	1 01 DYED TWISTED COTON 60/2 CO-60/2-NT A 48,2938775510204 GR	2 01 DYED TWISTED COTON 60/2 CO-60/2-NT B 33,3061224489796 GR				
010001 NIGHT BLUE	010001 NIGHT BLUE	010001 NIGHT BLUE	010012 PAPRIKA				
010002 SUGAR PAPER	010002 SUGAR PAPER	010002 SUGAR PAPER	010002 SUGAR PAPER				
010003 TURQUOISE	010003 TURQUOISE	010004 CANARY	010003 TURQUOISE				
010004 CANARY	010004 CANARY	010004 CANARY	010004 CANARY				
010006 CANDY	010006 CANDY	010006 CANDY	010006 CANDY				
010008 GRASS	010008 GRASS	010008 GRASS	010008 GRASS				
010009 GREEN	010009 GREEN	010009 GREEN	010009 GREEN				
010010 BROWN	010010 BROWN	010010 BROWN	010010 BROWN				
010012 PAPRIKA	010012 PAPRIKA	010012 PAPRIKA	010012 PAPRIKA				
010013 VIOLET	010013 VIOLET	010013 VIOLET	010013 VIOLET				

Textile-oriented Features:

• Warp and weave notes:

Entering warping and weaving instructions has never been simpler: product weaving and warping notes can be defined in detail using an expression, with simple or variable ends and multiple warp levels. The graphical structure of the notes and requirement calculations will be made available to the user automatically;

• Variant grids:

Component color matching for each variant is managed using practical grids. Auto-complete rules can be defined to facilitate the data-entry process;

• Weave Instructions:

You can attach the weave note to the product, selecting from a previously compiled list of standard weaves or drawing it directly onto the product. A graphic display of the weave allows you to check the data entered immediately;

• “Blanket” Management:

NOW PDM allows the creation and management of warp, weave and finished fabric “blankets”. Several warp blanket strips can be defined, with the option to choose between previously encoded warps or create new ones; it is then possible to select the fabric patterns to apply, starting from those already encoded. Specific functionalities enable finished fabrics to be created from blanket fabrics: each combination of weft/warp patterns defined in a blanket can be used to create the related projects in NOW PDM.

Dashboards

These new tools enable smoother, quicker prototyping and creation of collection products. Weaving, printing, finished product and collection dashboards make it possible to take weaving or printing patterns and their variants – or any collection style or theme – as a starting point, and combine to generate a finished product.

The rules for copying information from the starting elements to the final project are completely customizable: a single dashboard provides an overview of materials, ideas and all projects defined, with the

option of adding or changing any element in each of them.

The weaving dashboard, for example, follows user-defined rules to combine and inherit the master data of the design and fabric families, automatically recalculating the requirements and weights. The feasibility of the design variants for the final fabric will also be verified and monitored. You can create new fabrics, avoid data-entry errors and simplify the prototyping process in just a few steps, thanks to the robust and reliable procedure.

Having selected themes (i.e. the materials and styles developed for the collection), and models (i.e. the neutral prototypes of items to be produced: finished garments, accessories and what will be part of the collection), the Collections Dashboard allows users to combine these elements, with intuitive drag-and-drop operations, to create all the projects that will be part of the collection.

Cost calculation

The product development process ends with a determination of costs and selling price. Fully configurable groups and cost level management allows you to customize the Cost tab display. Every element that contributes to the cost is immediately evident, making it easy to control. A warning system highlights any missing data required to complete the product cost calculation.

Cost sheet archiving means variations are always traceable, and an automatic recalculation engine detects any modified projects that need to be re-processed.

Cost: CostA: Costo Standard											
Group	Level	Cost entity	ize Code	Color Code	Price List N...	UoM	Needs	10 KG, Tot...	10 KG, Unit...	100 KG, To...	100 KG, Un...
TOTAL COST ARTICLE								199,15446		199,15446	
0010		MATERIALS						138,12849		138,12849	
0010	00011	FABRICS						107,12040		107,12040	
0010	00011	Article: 19017 145 0 LINING FABRIC 100 Acrylic weight 120Gr/m		010011		MT	1,137738	6,82642	6,00000	6,82642	6,00000
0010	00011	Article: 24300 140 78901R COTTON FABRIC 100% Weight 190Gr/mt		020015		MT	4,178916	100,29398	24,00000	100,29398	24,00000
0010	00012	ACCESSORIES						2,36000		2,36000	
0010	00012	Article: 75801 CARD GF 58x79		000		NR	1,000000	0,20000	0,20000	0,20000	0,20000
0010	00012	Article: 75814 BARCODE LABEL		001		NR	1,000000	0,20000	0,20000	0,20000	0,20000
0010	00012	Article: 77531 LABEL COATS GF		900		NR	1,000000	0,20000	0,20000	0,20000	0,20000
0010	00012	Article: 76390 LABEL COMPOSITION ITR-TG		001		NR	2,000000	0,40000	0,20000	0,40000	0,20000
0010	00012	Article: 36215 HOOK PANT CLASSIC BRASS		000		NR	1,000000	0,20000	0,20000	0,20000	0,20000
0010	00012	Article: 66114 BIAS MM 29		070		MT	1,800000	0,36000	0,20000	0,36000	0,20000
0010	00012	Article: 16612 Additional Information: FF GOLD		001		NR	1,000000	0,20000	0,20000	0,20000	0,20000
0010	00012	Article: 75389 SEAL GF		001		NR	1,000000	0,20000	0,20000	0,20000	0,20000
0010	00012	Article: 75330 BAG HOLDER BUTTON		001		NR	1,000000	0,20000	0,20000	0,20000	0,20000
0010	00012	Article: 34771 PLURIBALL 60x45 SHAPED		000		NR	1,000000	0,20000	0,20000	0,20000	0,20000
0010	00013	PACKAGES - MATERIALS						6,50000		6,50000	
0010	00013	Article: 66595 Pigtail 3 FIXED	.0	001		PA	1,000000	0,50000	0,50000	0,50000	0,50000
0010	00013	Article: 09010 LABEL SIZE	.4	001		PA	1,000000	0,50000	0,50000	0,50000	0,50000
0010	00013	Article: 67212 BO.F /HORN 311 GFF + 4 EYES	.4	070		PA	11,000000	5,50000	0,50000	5,50000	0,50000
0010	00015	PURCHASE ADDITIONAL COSTS						0,30600		0,30600	
0010	00015	WC: 000006 SEW OP: 10_0002 SEWING ELEM: G004F Defects - Bought yarns Article: 16SP...				%	1,000000	0,30600	2,00000	0,30600	2,00000
0010	00056	OTHER COSTS						21,84209		21,84209	
0010	00056	ELEM: G001 TRANSPORT EXPENCES Article: 36215 HOOK PANT CLASSIC BRASS				%	2,000000	0,00400		0,00400	
0010	00056	ELEM: G001 TRANSPORT EXPENCES Article: 66114 BIAS MM 29				%	2,000000	0,00720		0,00720	
0010	00056	ELEM: G001 TRANSPORT EXPENCES Article: 16612 PL 4F, 1SP, MM, 1 GFF GOLD				%	2,000000	0,00400		0,00400	
0010	00056	ELEM: G001 TRANSPORT EXPENCES Article: 24300 140 78901R COTTON FABRIC 100%...				%	2,000000	2,00587		2,00587	
0010	00056	ELEM: G001 TRANSPORT EXPENCES Article: 16SP17 JACKW01 23700 GIACCA DOPPIOP...				%	2,000000	3,41896		3,41896	
0010	00056	ELEM: G001 TRANSPORT EXPENCES Article: 75389 SEAL GF				%	2,000000	0,00400		0,00400	
0010	00056	ELEM: G001 TRANSPORT EXPENCES Article: 34771 PLURIBALL 60x45 SHAPED				%	2,000000	0,00400		0,00400	
0010	00056	ELEM: G001 TRANSPORT EXPENCES Article: 75330 BAG HOLDER BUTTON				%	2,000000	0,00400		0,00400	
0010	00056	ELEM: G001 TRANSPORT EXPENCES Article: 66595 Pigtail 3 FIXED				%	2,000000	0,01000		0,01000	

Collection Management

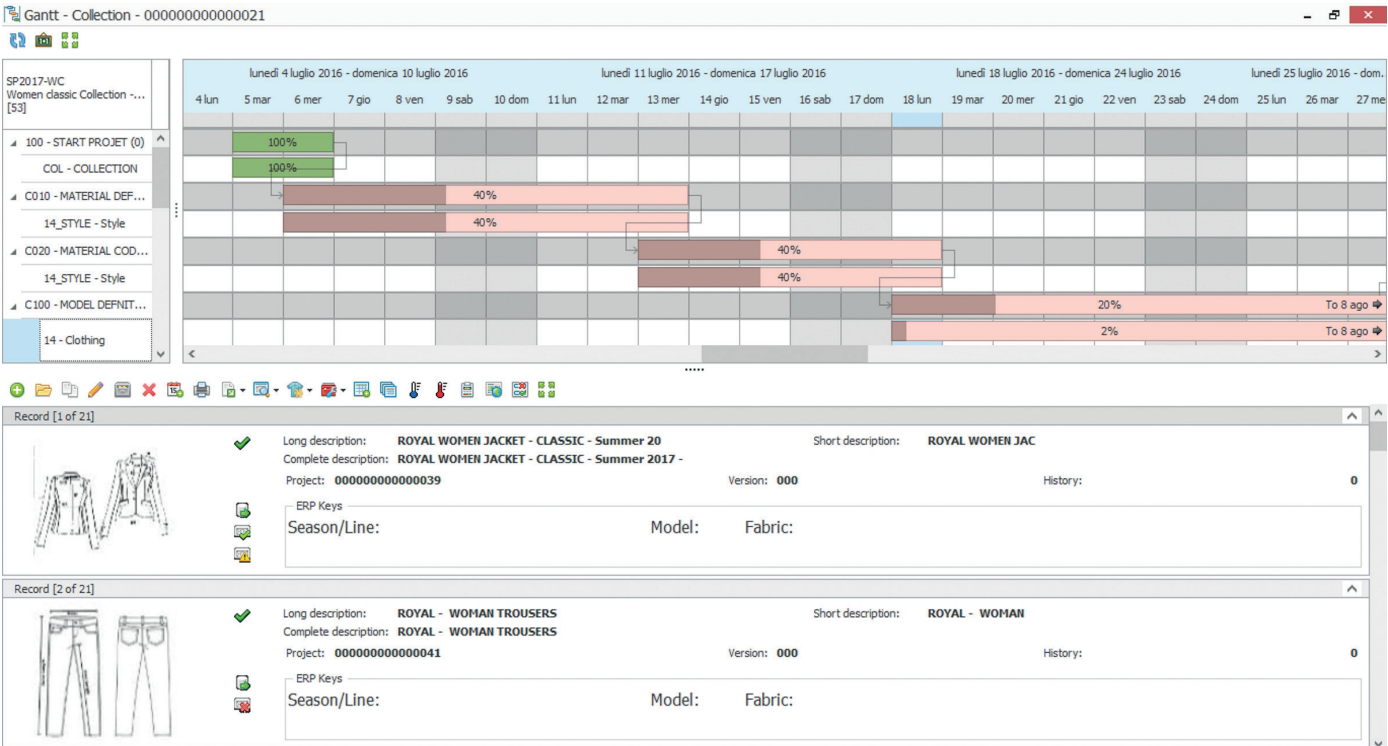
Collection planning and development is now easier thanks to NOW PDM.

Progress tasks or a collection, and the relevant scheduling, can now be defined in detail, from the initial stages (fabric selection, prototyping) through to completion (production).

A collection can include models for a whole season, or you can create more specific collections for a single line or customer, or any combination of these.

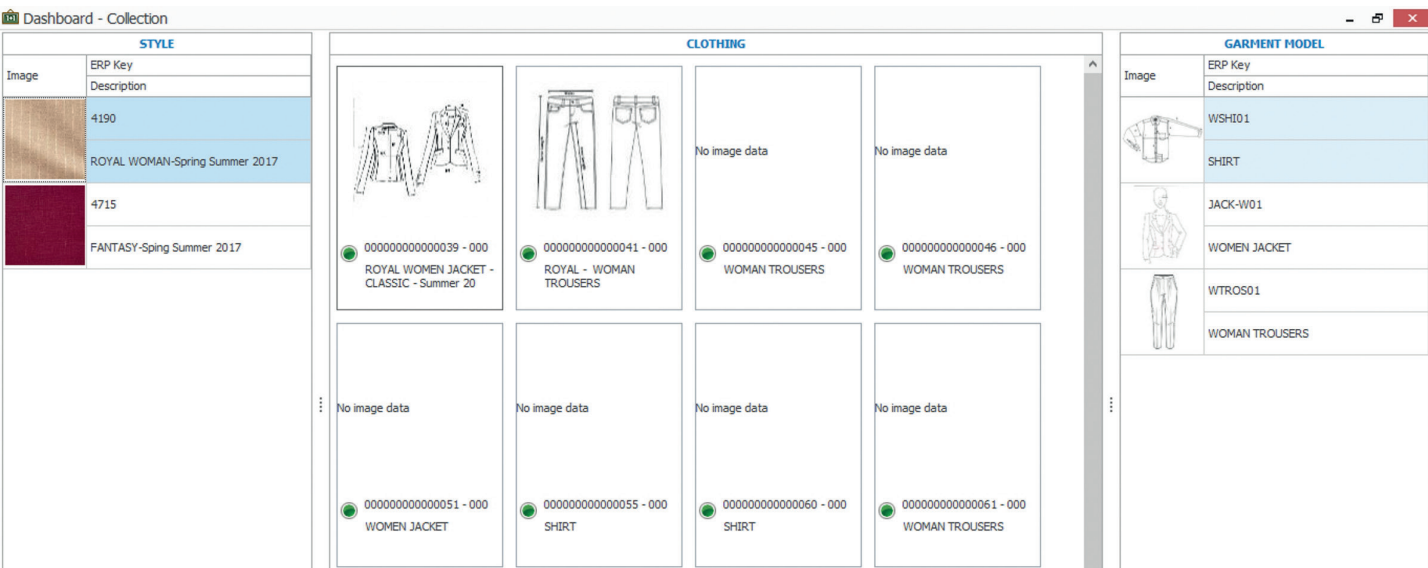
To-do list

Remembering all the activities, you are responsible for while developing a new collection is not always easy. The “to-do-list” will help keep everything under control, providing you with a list of activities to perform. The info shown is fully configurable, allowing you to select what to see and in what order. The display mode is also customizable, allowing you to choose between a detailed list or to group, for example, by expiration date.



A system of traffic-light style icons (green-yellow-red) immediately indicates the status of each activity: in advance, online or late.

In addition, NOW PDM workload management allows you to ensure that resources are used in a sustainable and uniform manner, avoiding over-allocations and sub-utilization peaks.



SWITZERLAND - DATATEX AG

Industriestrasse 47 po box 4461

Ch-6304 Zug

Phone: +41 (0)417 264 283

ITALY - DATATEX CONSULTING SRL

Viale Lunigiana 46

20125 Milano Italia

Phone: +39 02 679 744 1

INDIA - VERODATATEX INDIA PVT LTD

1st floor at Silverline Tech Park,

Plot No 180, EPIP Zone, Whitefield,

Bangalore 560 066

Phone: +91 080 437 122 87

GERMANY - DATATEX GMBH

Kirchstrasse 12

48485 Neuenkirchen - Germany

Phone: +49 597 399 645

USA - DATATEX TIS INC.

11810 Northfall Lane, Building 1203

Alpharetta, GA 30009 USA

Phone: +1 770 667 86 56

SERBIA - DATATEX2018 DOO

Krunska 23

11000 Belgrade

Phone: +381 696 890 80

ISRAEL - DATATEX LTD

Haodem Str. 3 - Ramat Siv

Petach - Tikva - Israel

Phone: +972 3 923 41 01

For more information see our disclaimer: <https://datatex.com/disclaimer/>