



Your Worldwide Provider
for Global Solutions



www.spoolex.com

• Spoolex representatives

All in-house organisation



SPOOLEX manages complete projects from
designing, manufacturing, testing and commissioning

Business organization

Web formed product converting

Machinery Department



CALEMARD

by Spoolex

Converting
machines & cells

www.calemard.com



CALEMARD 4.0

by Spoolex

Automated handling
& robot systems

www.calemard.com

Components Department



DECOUP+

by Spoolex

Continuous **ultrasonic**
cutting and welding
solutions

www.decoup.com



ROLL CONCEPT

by Spoolex

Technical **rollers** and
winding cores

www.rollconcept.com

Sales department

Our sales teams are composed with market specialists to ensure the most appropriate answer to each specific need:

- Calemard® Rubber & Tires Machinery Division
- Calemard® Textile & Nonwovens Machinery Div.
- Calemard® Industry Machinery Division
- Decoup+® Ultrasonic Division
- Roll Concept® Technical rollers Division

Trials

We have a dedicated testing laboratory, featuring all Calemard® slitter rewinder solutions and one spool converter, as well as Decoup+® ultrasonic cutting/sealing devices for product trials

Engineering depart.

- To carry out machine/device process feasibility, customisation and development
- To engineer and produce handling/conveying and automation turnkey solutions

Production depart.

For the assembly and control of all our equipment, but also, for the production of rollers ready to use

Customer care center

Dedicated to Customer Services:
Commissioning, Training, Spare-parts,
Devices repair, Retrofits

Spoolex is certified ISO 9001 and 45001

Non contractual pictures and technical specifications - Last update: Sept. 2023



Converting Machineries



Ultrasonic Solutions



Technical Rollers



Handling & Automation



CALEMARD

by Spooler

The global reference in quality slitting rewinding and spooling flexible solutions

Present since 1955 on a wide range of markets, our Calemard® brand has focused its activities on highly technical applications where quality slitting and/or rewinding are needed to achieve.

Markets

- Rubber and textile for the tire production
- Plastic films, adhesive tapes, foils, foams, carbon sheet
- Nonwovens
- Textiles and technical textiles
- Fiber glass and composites

Products

- Slitter-rewinders
- Spooling lines
- Slitting benches
- Splicing benches
- Complete cells

The modular concept

Every Calemard® equipment consists in **3 modules for unwinding, slitting and rewinding/spooling**, with different solutions, to better cope with each process requirement: from compact narrow slitter to XXL slitter or spooling line

Unwinding

Either integrated or separated (for large Ø mother rolls)
Always with control of both the fabric tension and its lateral position
Options: solutions for easier & faster mother roll loading, double unwinder for tubing applications or mother roll loading in hidden time...

Slitting

Either cold - with crush, shear cutters or razor blades
Or with hot cutters or ultrasonic cutters when sealing is needed
Or combined technologies

Rewinding

Axial/Centre rewinding: simple and cost-effective solution

Tangential/Surface centre: more technical solution for demanding applications or materials, for narrow strip width to rewind or for large pancake diameter...

Spooling/Traverse winding: to rewind 20, 30 even 50 times more products than on a standard pancake. We propose 2 solutions:

- Conventional spooling for stable products: the bobbin is fixed and the lay-on finger moves laterally
- Self-traversing spooling for sensitive products: driven bars mounted on a moving frame. The strips remain straight and flat from the slitting area to the rewinding zone, thanks to spooling head continuous traverse motion.



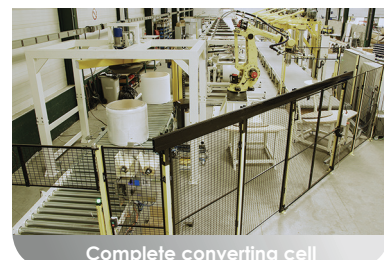
Slitter-rewinders



Spooling lines



Jumbo spooling lines



Complete converting cell



CALEMARD 4.0

by Spooler

From Single Machine to Complete Converting Cell with Automated Solutions from our Calemard 4.0 department

Calemard 4.0 is specialized in the engineering and the production of handling/conveying and automation turnkey solutions.

Our teams manage complete projects with an all in-house organization, from designing, manufacturing, testing and commissioning.

- Robot system, Automation, VPN, DataSmart...



CALEMARD
by Spooler

Converting Machineries



DECOUPAGE
by Spooler

Ultrasonic Solutions



ROLL CONCEPT
by Spooler

Technical Rollers



CALEMARD 4.0
by Spooler

Handling & Automation



DECOUP+

by Spoollex

The specialist in continuous ultrasonic cutting and sealing solutions

We developed our first range of ultrasonic devices in 1972. Since 1995, under our Decoupe+® brand, we have been developing and manufacturing standard or turnkey ultrasonic cutting and sealing systems for textiles, nonwovens, PP-Tapes and plastic films applications.

Ultrasonic cutting/sealing performs **clean, stable, strong and consistent** edges without burning nor overthickness!

Markets

- PP-Tapes for FIBC
- Textile and Technical Textile
- Nonwoven
- Sun protection fabric
- Plastic film

Products

- From handheld devices for final make-up operation, to modules or units to be integrated on weaving looms, stenters and off-line machines
- Proven solutions
- Industrial range
- Reliable and affordable devices
- Specifically adapted to continuous operations

Range of technologies

Direct cutting

To cut and seal in one single pass - Handheld devices or units for implementation

Combined cutting

To reinforce edges: ultrasonic welded track followed by, depending on edge resistance needs, ultrasonic or mechanical cutting - Units for implementation

Splicing

To join by ultrasonic two webs together: strong join without burning nor overthickness - Handheld devices or units for implementation

Press cutting

For cut-to-length operations: semi-automatic workstation, handheld devices or units for implementation

Press welding

For spot welding operations: semi-automatic workstation or handheld devices



Handheld devices



Well-known Star devices for PP-Tapes weaving looms



Units to be integrated on off-line machines



Converting Machineries



Ultrasonic Solutions



Technical Rollers



Handling & Automation



ROLL CONCEPT

by Spoollex

We don't supply simple roller!

For nearly 30 years now, Roll Concept® designs and manufactures the patented ALVEOTUBE® product line.

Markets

- Textile, Technical Textile and Nonwoven
- Tire industry
- Plastic, Packaging and Printing
- Floor covering
- Conveying



ALVEOTUBE®, the Eco-Concept

- This Eco-solution **is the best aluminium compromise on the market** between bending resistance and inertia, and allows **decreasing electrical power need and consumption** during speed-up phases!
- Specially engineered to improve process performance and increase line speed on web handling and converting industry, our lightweight precision rollers and cores ensure to our customers easy installation, easy handling and durability.
- Our range includes from simple profile to ready to run solutions with a **large choice of finishings and coatings**

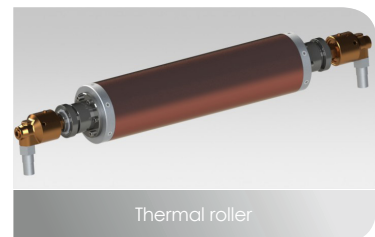
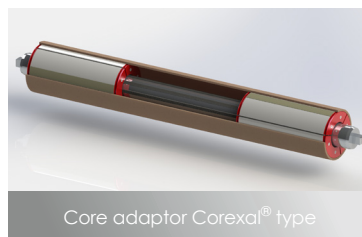
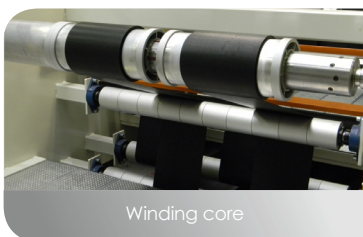
Main advantages

- Patented aluminium profil
- Reduced weight
- Low inertia and bending resistance
- High critical speed
- Easy installation
- Turnkey solutions

Products

Specially designed for reduced weight and high critical speed... both for machinery manufacturers and end users

- **Rollers, Cylinders:** low inertia, light and rigid, eco-solution from simple profile to ready to turn roller
- **Winding cores:** light and rigid, resistant to corrosion and reusable
- **Core adaptor Corexal®:** easy to use and light, this core adaptor allows to transform in few seconds and without any devices, a 3" expanding shaft into a 6" one
- **Thermal rollers:** low inertia, efficient thermal transfer, light weight compared with a standard double casing roller, cooled by air or water



Converting Machineries



Ultrasonic Solutions



Technical Rollers



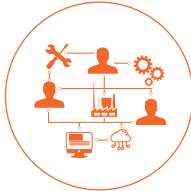
Handling & Automation

OUR STRENGTHS

- 5% of turnover invested in R&D
- 15 skilled technicians & engineers
- 23 patents

Technological support

64 years' expertise



Who we are

For over 60 years SPOOLEX company, has been providing high quality converting equipment, components and services.

To meet your needs of higher productivity, operator's safety and line production flexibility, we support you throughout your project, from design to finished line or component, ready to run!



In-house Engineering

Our integrated Engineering department can handle your project from simple slitting machine to fully automated line!

Its mission:

- To engineer innovative and added-value solutions
 - To design tailored machine concept
- To support customer in choosing the most suitable technological solutions

We can set-up trials and process feasibility in our test shop. This support is a guarantee to define the most cost-effective standard or specific solution.



Customer Care

This structured and optimized service is dedicated to our customer's full satisfaction. A team of experienced and highly trained technicians ensures:

- Worldwide assistance
- Training and support
- Commissioning
- Spare-parts and upgrades



Test Laboratory

Thanks to our fully equipped Laboratory, we can perform any tests on your own products. Don't hesitate to send us your products!



Converting Machineries



Ultrasonic Solutions



Technical Rollers



Handling & Automation

Founded in 1955

Machines delivered in more than 100 countries!

**Fully equipped Testshop for trials
on your own materials!**

Let us carry out your project!



Tel. +33 (0) 477 90 00 34
spoolex@spoolex.com
www.spoolex.com



SPOOLEX SAS

ZI du Buisson - 7 Rue de la Poudrière
42230 Roche la Molière - France



ISO
9001
45001

Certified company