

# HEALTHCARE







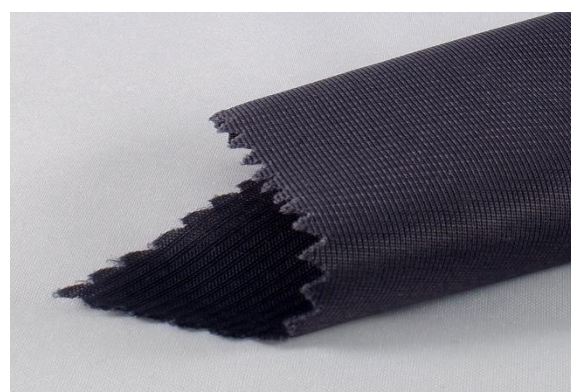




## HIGH PERFORMANCE FURNISHING TEXTILES

**B**altex designs and manufactures a wide range of high performing Medical Textiles, with manufacturing, research and development facilities in both the UK and Poland. Baltex also has a close working relationship with the University of Bolton in the UK, a world leader in the development of medical textile applications.

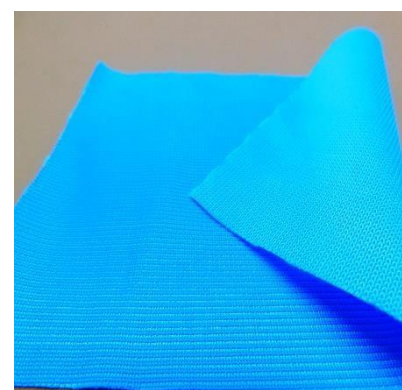
Since the foundation of the company in 1831, innovation has been at the heart of our business. In 2010 the company won the TI World Conference prize for innovation. The company has also won two Queen's Awards for International Trade. With more than 188 years of experience, Baltex is shaping the future of technical textiles.



2980

Warp Knit Polyester

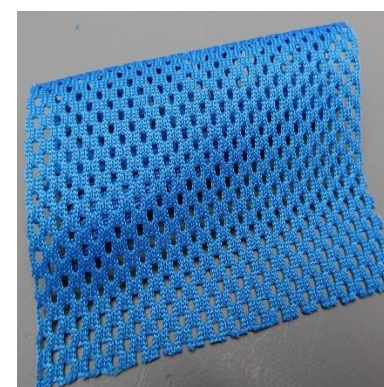
Weight: 116-136g/m<sup>2</sup>  
Width: MIN 187cm



6282

Solid Polyester

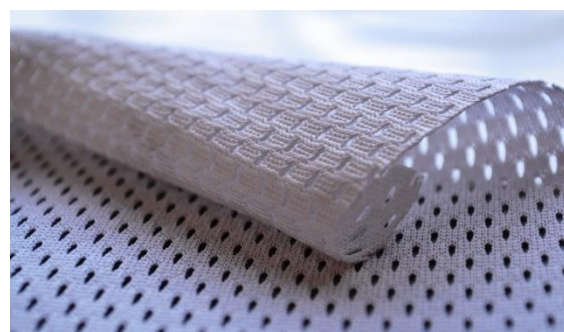
Weight: 280-310g/m<sup>2</sup>  
Width: 140-145cm



4169

Polyester Mesh

Weight: 320-370g/m<sup>2</sup>  
Width: 150-153cm



3910

Coolmax Mesh

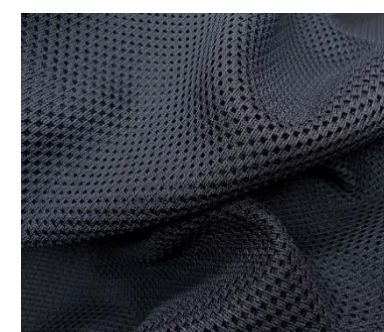
Width: 160-170cm  
Weight: 200-220g/m<sup>2</sup>



7716

Coolmax Fresh FX

Weight: 360-430g/m<sup>2</sup>  
Width: 155-160cm



5712

Polyester Mesh

Weight: 380-420g/m<sup>2</sup>  
Width: 150-160cm



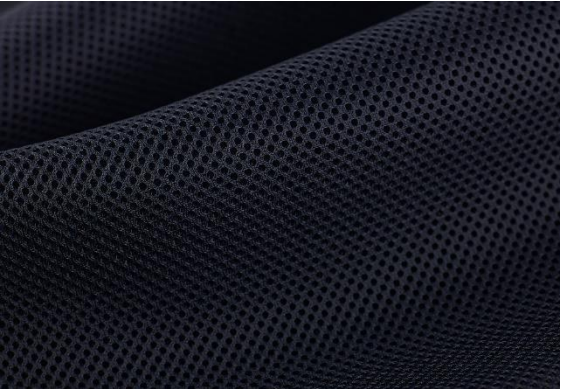


# OUR CAPABILITIES

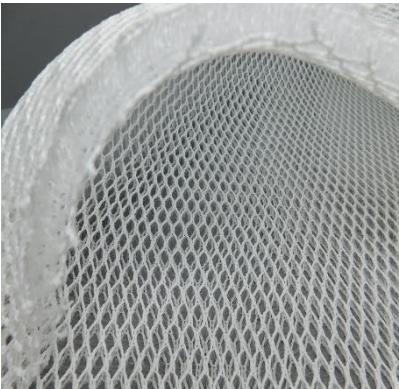
**B**altex work with the following fibres: Polyester, High tenacity Polyester, Cotton and Nylon (Polyamide), we are interested in working on new development projects, any customer enquiry will be taken into consideration.

Some of the finishes we can produce: dyeing, anti-viral, feran ice, antibacterial and water-repellency.

We have full testing facilities in our Laboratory. Our approval to ISO 9000:2001 by Lloyds Register Quality Assurance has been part of our continuing drive to improve both the quality of our products and the level of customer service. We are approved for the supply of all warp-knitted and weft-knitted fabrics. Baltex will soon be accredited to EN ISO 14001.



**M3730**  
Polyester Spacer  
Weight: 300-320g/m2  
Width: 148-152cm  
Thickness: 3mm



**M3371**  
Double Mesh Spacer  
Weight: 465-515g/m2  
Width: MIN 210cm  
Thickness: 10mm



**M3550**  
Aramid Mesh  
Weight: 140g/m2  
Width: 100cm



**M8180**  
Double Mesh Spacer  
Weight: 550-620g/m2  
Width: MIN 185cm  
Thickness: 6mm



**NPD 88**  
Spacer Fabric  
Weight: 650-700g/m2  
Width: 155-165cm  
Thickness: 5.5-7mm



**3250**  
Stretch Spacer  
Weight: 380-420g/m2  
Width: MIN 136cm  
Thickness: MIN 2.5mm





# APPLICATIONS

Baltex is proud to be helping improve the service that patients receive by supplying technical fabrics are used in a wide range of end products, including:

- Medical gown fabric
- Patient "Lifting Slings"
- Hospital laundry bags
- Treatment and prevention of pressure sores products
- Wheelchairs covers and seating
- Medical mattresses
- Orthopaedic support bandages and compression therapy goods
- Wound care dressings
- Face masks treated with Viral Off finish
- Surgical drapes
- Medical scrubs treated with Viral Off finish



M3400

Polyester Spacer

Weight: 450-550g/m2  
Width: 135-145cm



8660

Polyester FR Spacer

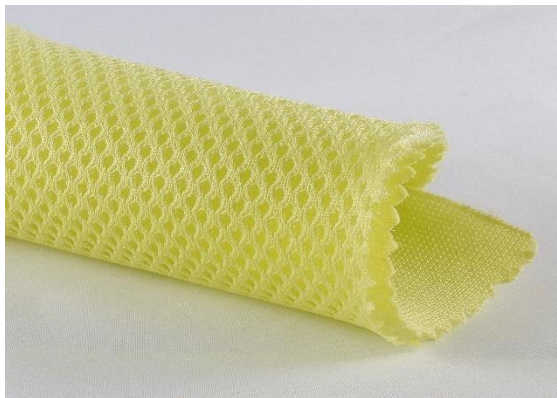
Weight: 310-360g/m2  
Width: 170-180cm  
Thickness: 2.5-3.5 mm



M3605

Polyester Spacer

Weight: 750-900g/m2  
Width: 160-165cm  
Thickness: MIN 6.5mm



7412

Polyester Spacer

Weight: 390-480g/m2  
Width: 155-160cm  
Thickness: 4.5-6mm



9190

Polyester Spacer

Weight: 690-760g/m2  
Width: 137-143cm



8442

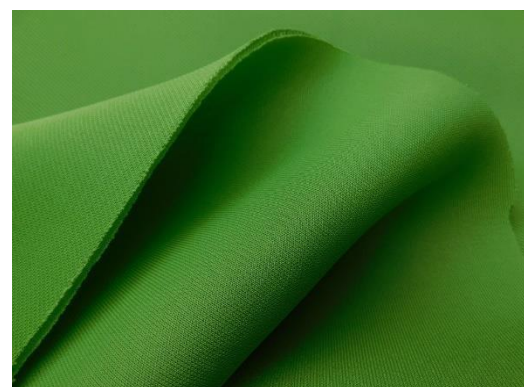
Breeze Spacer Fabric

Weight: 240-280g/m2  
Width: 145-155cm  
Thickness: 3-3.5mm





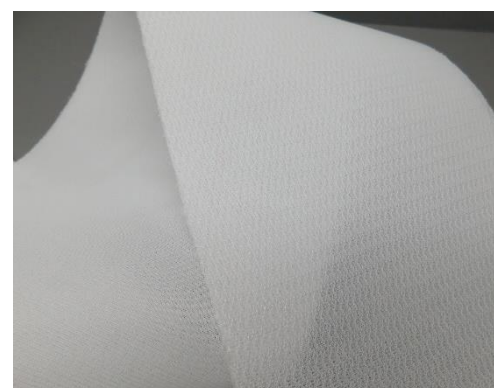
## OUR LATEST DEVELOPMENTS...



### NPD 86

Recycled PE Spacer

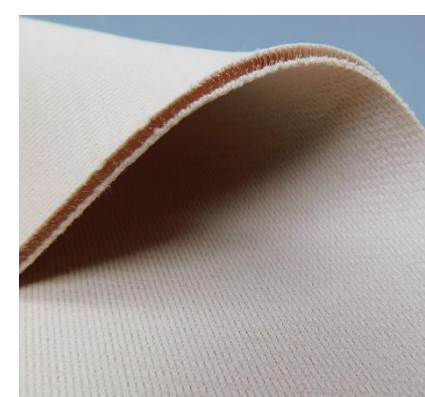
Weight: 350-400g/m<sup>2</sup>  
Width: 175-185cm  
Thickness: 3mm



### NPD 75

Polyester Spacer

Weight: 280-310g/m<sup>2</sup>  
Width: 195-200cm  
Thickness: 3mm



### NPD 179

Emana Spacer

Weight: 280-310g/m<sup>2</sup>  
Width: 195-200cm  
Thickness: 3-3.5mm



### NPD 304

Recycled PE Spacer

Weight: 300-350g/m<sup>2</sup>  
Width: 150-160cm  
Thickness: 3mm



### NPD 303

Polyester Spacer

Weight: 300-350g/m<sup>2</sup>  
Width: 150-155cm  
Thickness: 3mm



### NPD 289

Polyester Mesh with PU

Weight: 130-145g/m<sup>2</sup>  
Width: 155-162cm



# We are here for you

W Ball & Son Ltd

Burr Lane

**Ilkeston**

Derbyshire

DE7 5JD

United Kingdom

[sales@baltex.co.uk](mailto:sales@baltex.co.uk)

[www.baltex.co.uk](http://www.baltex.co.uk)

**Andrew Ollerenshaw- Senior Account Manager**

[Andrew@baltex.co.uk](mailto:Andrew@baltex.co.uk)

**Julia Nassivet- European Sales Manager**

[Julia@baltex.co.uk](mailto:Julia@baltex.co.uk)

**Alexandre Nomballier- European Sales Representative**

[Alex@baltex.co.uk](mailto:Alex@baltex.co.uk)

