



WOWTECH CO.,LTD

Introduction

01 **About Us**

02 **Export**

03 **History**

04 **Product**





1

About Us

Company developing the future by creating the value of special processing technology.

About Us

Name

WOWTECH

CEO

Byoung-Cheol LEE

Establish

10TH FEB 2009

Sales

About \$7.5 Million

Product

Automobile Part

Worker

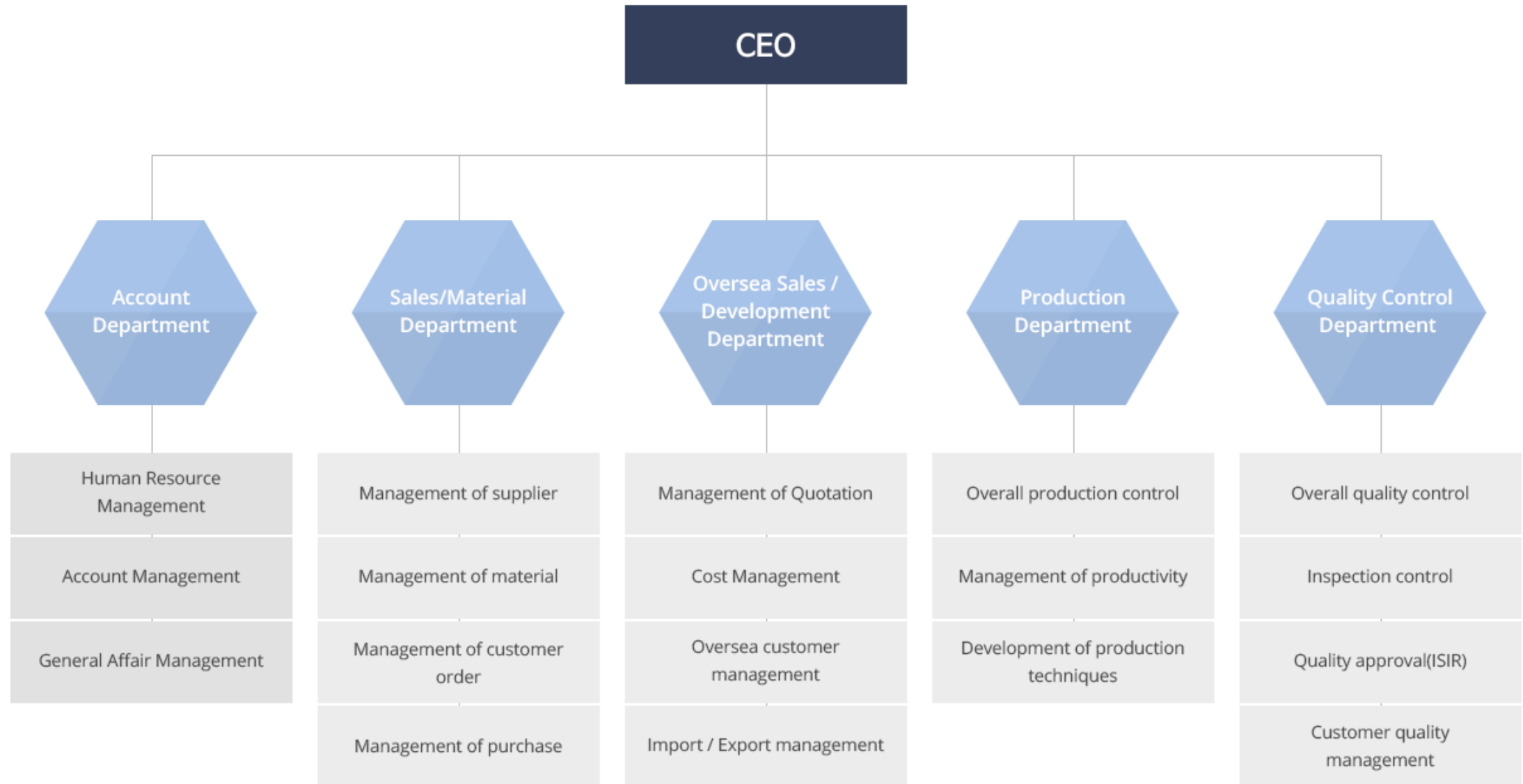
45



WOWTECH

WORM OF THE WORLD TECHNOLOGY

Organization





2

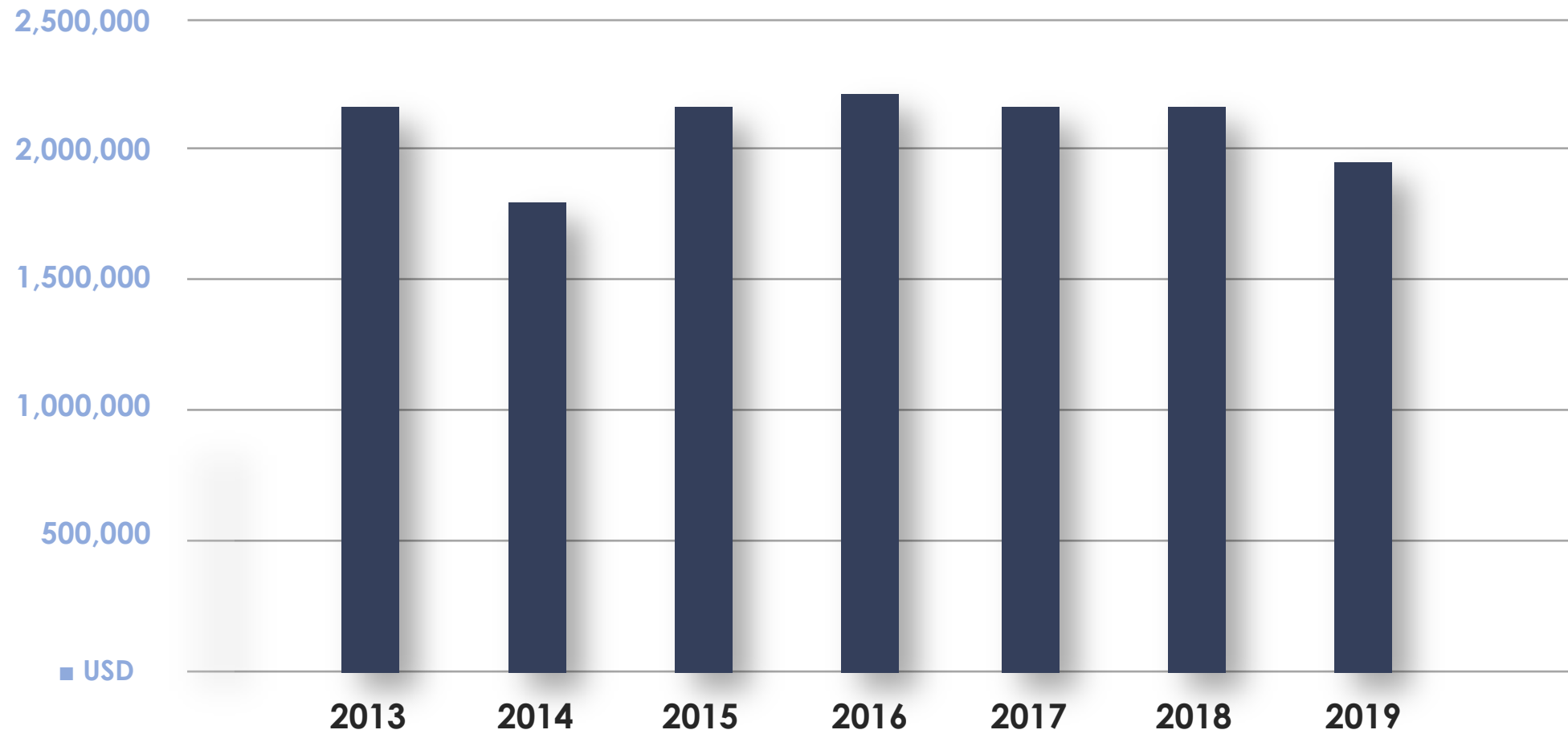
Export

We promise that we will do our best to take part in the improvement of your product value and be your trusty partner all the time.

Customer



Export Sale





3

History

Quality management is implemented to meet the rapidly changing needs of the new industrial revolution.

History

94

May

Established Dolchul-Engineering Company , Ltd

Dec

Registered at Daewoo Heavy Industry as supplier

95

Dec

Registered at Samsung , Ltd as supplier

Registered at Institute for Daewoo advanced engineering as supplier

98

Dec

nominated as 'Intensive technological company

Registered at DENSO PS , Ltd as supplier

99

Feb

Registered at LG Electronics as supplier

00

May

Registered at VALEO PYEONG HWA , Ltd as supplier

History

02

Oct

Acquired 'The clean work-site certification'

Nov

Acquired 'QS 9000 quality system certification'

03

Dec

Registered at GM DAT as supplier

04

Aug

Registered at Daeki Automotive , Ltd as supplier

05

Jan

Worm process machine used by CNC shelf controlling number value

06

Sep

Acquired 'TS 16949 certification'

Apr

Acquired 'ISO 14001 environmental certification'

History

07

Apr
Jun

Nominated as 'Innovational management company'
Nominated as 'Promising export company'

09

Apr
Feb

Acquired 'Venture company certification'
Established 'WOWTECH CO.,LTD'

10

Jul

Registered at EATON as supplier

11

Apr

Registered at PARKER as supplier

12

Feb

Registered VALEO MEXICO as supplier

History

14

Mar

Registered VALEO FRANCE as supplier

17

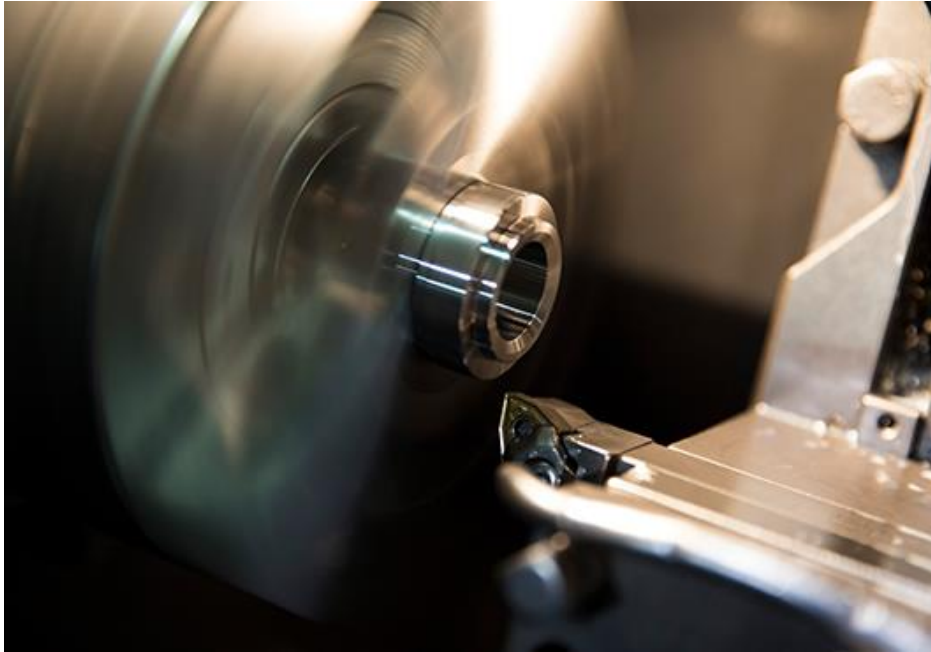
Mar

Nominated as 'Employee Friendly Company'

19

Sep

Registered KAPEC VALEO JAPAN as supplier



4

Product

We specializes in the manufacturing of the precision parts for the defense and automobile industry.

Major Product

We are specializing the high precised automobile part.

We are producing over 300 pieces of the parts assembled in DCT (Dual clutch transmission), Auto transmission, and Manual transmission.

EXPORT PRODUCT



Torque converter

DOMESTIC PRODUCT



DCT

Major Product

EXPORT PRODUCT



DOMESTIC PRODUCT



Product

1 Heavy duty part



4 - 6 TON MCV FOR EXCAVATOR SOCKET



KNOB & SENSOR

Product

2 GDI FUEL RAIL PARTS

Raw materials: stainless 304L

Hard to process



GDI FUEL RAIL PARTS

AUTO PARTS



GDI FUEL RAIL PARTS



SEAT BELT PARTS



IGNITION COIL(TERMINAL-PLUG)



AUTO TRANSMISSION PARTS



BOSS CONV (M10 / M8)



COVER LUG



BOSS CONV



COVER LUG



COVER PILOT



UNIVERSAL CONCENTRICITY GAGING SYSTEM

The origin purpose of this machine was not for sale. It was manufactured to inspect our own production, however, demand of this machine in market was increased so it is turned to for sale.



MODEL-B



MODEL-C



MODEL-A



SMALL HELICAL GEAR



AUTOMOBILE DOOR
LOCK WORM GEAR



AUTOMOBILE TRUNK
LID WORM GEAR



AUTOMOBILE DOOR
LOCK WORM GEAR SUV ASS'Y



PARTS FOR THE DEFENSE INDUSTRY AND PRECISION MACHINERY



NAME : Bush

APPLICATION : Precision parts for the defense industry / gyroscope

MATERIALS : Invar 36 alloy

CHARACTERISTICS : Hard mechanical materials. Parts difficult to make jigs and fixtures for precise wire cutting and shaping and also difficult to remove burrs.



NAME : Bush-Ass'y

APPLICATION : Precision parts for the defense industry / gyroscope

MATERIALS : Invar 36 alloy and Permalloy

CHARACTERISTICS : Susceptible thermal deformation during laser welding of different materials. Advanced jig and fixture manufacturing and precise wire cutting technology required parts.



NAME : Magnet-Ass'y

APPLICATION : Precision parts for the defense industry / gyroscope

MATERIALS : Invar 36 alloy and Permalloy

CHARACTERISTICS : Difficult to make jig and fixture for brazing of different materials and for setting of tooling balance when drilling small holes.



NAME : Gear Housing

APPLICATION : Precision parts for the defense industry-related hygienics

MATERIALS : SUS 303(BS 970 PT4 303 S21)

CHARACTERISTICS : Process setting for turning is important. Thermal deformation and dimensional errors are susceptible. High hand skill required for grinding SUS materials.

PARTS FOR THE DEFENSE INDUSTRY AND PRECISION MACHINERY



NAME : Housing

APPLICATION : Core parts for hgtienics

MATERIALS : Al-alloy

CHARACTERISTICS : Process sequence and inspection between the processes are important



NAME : Rotor

APPLICATION : Parts of a gyroscope

MATERIALS : ZV-Permendur(Special materials)

CHARACTERISTICS : Difficult to meet the requirements of precision tolerance (8) and inspection during machining. Hard mechanical materials.



NAME : Gyroscope

APPLICATION : Precision parts for the defense industry / gyroscope

MATERIALS : 4-70 Mo/Permalloy

CHARACTERISTICS : Hard mechanical materials. Susceptible to thermal deformation during machining. Difficult to measure.



NAME : Stator

APPLICATION : Precision parts for the defense industry

MATERIALS : Precipitation hardening steel

CHARACTERISTICS : Parts difficult for making jig and fixture for wire cutting after lathe turning and grinding, and difficult to remove burrs.

DEFENSE INDUSTRY



1000000



TORQUE CONVERTER



MANUAL MISSION



DIFFERENTIAL



1000000





THANK YOU SO MUCH

wowtech@wowdc.kr