



Headquarter

Yatu Advanced Materials Co., Ltd
Sanlian Industrial Area 2, Gulao Heshan, Guangdong, China
+86 750 8773826
www.yatupaint.com
info@yatupaint.com

Worldwide Branches

Yatu Group (USA) Inc.
Yatu Group HK Co.,Ltd.
Yatu Russia LLC
Yatu Coatings LLP
Grupo Yatu Mexico

Perfeccoat

Perfeccoat

PERFECT FOR YOUR SUCCESS

Perfeccoat

CONTENTS

Milestone	1
Production Process	3
YATU Color Solutions	5
Primers	7
Topcoat	8
Basecoat	10
Clearcoats	12
Binder	13
Accessories	14
High Performance Repair	15
Rapid Repair	17
Quick Reference Guide	19

A comprehensive system for reliable quality and remarkable efficiency

With advanced technology, Perfecoat provides excellent coverage, extraordinary performance, and easy to reproduce regardless of the personal style of each painter. Good blending properties help make an invisible repair. Small defects in film can be sanded and easily corrected. Perfecoat is a highly productive and profitable system for bodyshop.

Perfeccoat is a multifunctional system, suitable for 1-stage and 2-stage application, meets the needs of those modern bodyshop's high quality and productivity requirements. A carefully selected and well-documented mixing tint range offers excellent color accuracy. It's a comprehensive system with all the products that are needed to repair cars.

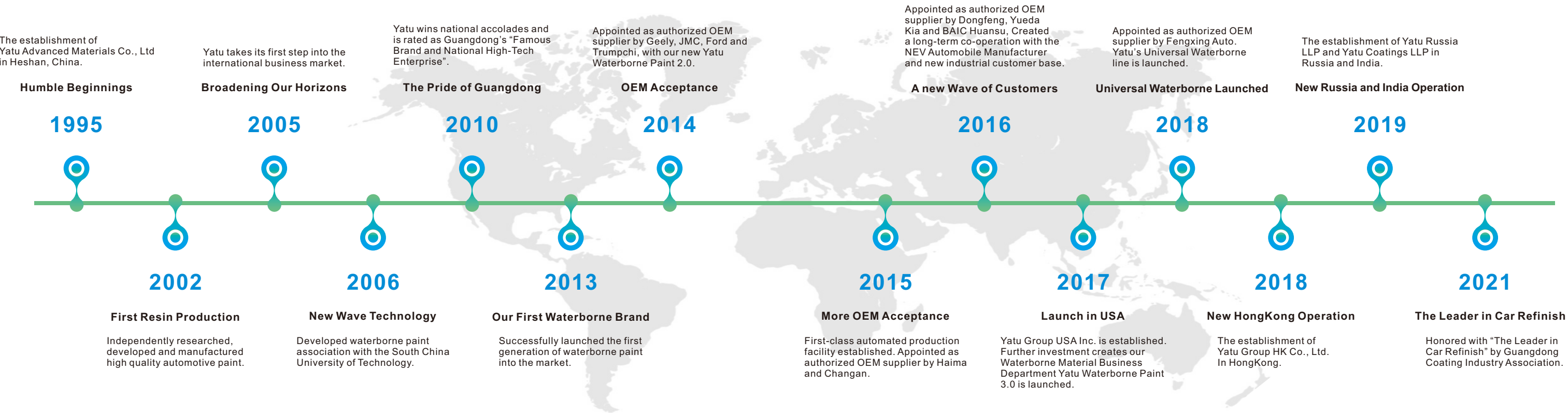


About YATU

YATU is a leading automotive coatings company with a passion for technology. Founded in 1995, we have grown to become China's largest producer of hi-tech paint systems and we are a major supplier to OEM bus and train manufacturers and the auto refinish sector. Our focus is on transportation coatings and green technologies. Based in southern China, the Yatu facility is the most advanced paint factory in the world. Planned from the ground up to utilise the latest process methodologies, we worked with leading engineers from around the globe to create not only the most efficient, but also the most eco-friendly way to manufacture automotive paints.



Every drop makes quality paint





Production Control Center
The center controls the paint manufacturing building, resin plant and raw material storage tanks automatically. It also supplies power for electric motors, lighting and fire emergency to each workshop.



Raw Material Storage Tanks
20 stainless tanks are located outside of the production buildings storing raw materials. The capacity of the tanks: 10 of them are 120 tons while the other 10 are 50 tons.



Resin Storage Building
The building is well equipped with internal pipelines to deliver the resin to the Production Building directly.



Pipelines
The raw materials are delivered to the Production Building by pipelines.

The 4-floor-building of production



4F
The whole floor has 36 tanks to take in the raw materials and resins.



3F
35 production lines are settled down in this floor, which include: material delivering line, dispersing line, grinding line and paint producing line.



2F
No worker is on this floor. 192 storage tanks are located to store up the finished and semi-finished paints.



1F
It's a packing floor to pack paints and paint cans.



Labelling
The cans are labelled and packed into cartons, then delivered to warehouses.



Warehouse
All packed-in-well paints are kept here temporarily.



Delivery
The paints are delivered to worldwide.



YATU Color Solutions - All for your one-stop service



Color Match

Color Mixing

ColorPlus Variant Chips

Painted with YATU actual refinish paint, the set of ColorPlus includes 7,503 latest color chips for polar vehicles and updated yearly.

PerfeMatch® Spectrometer

This five angle color measurement camera owns a large database and assists to find the actual match quickly.

Color Chips Selected

With a complete range of 1,655 colors for the most pupolor cars, it has 8 books of one set, excellent in the accurate color matching with actual paint spraying.

Color Information Chart

It offers very neat and clear color names and characters, which guides to acquire accurate color identification shortly.

Online Formulations

mix.yatupaint.com is the online formulations system, which updated daily and covers global color formulas more than 120, 000.

Color⁺Hardware

Sharing the same color formula database as the online formulation system, convenient for the customers who is hard to connect internet.

Color⁺ Mobile Application

With the same database as the online formulation system, is updated daily. This mobile application enables a quick access to the color formulas.

Primers

Plastic Primer

PC-10

A single-component transparent fast drying primer, used to promote adhesion of paint system to plastic parts.

Epoxy Primer

PC-GY1350

Gives excellent rust proofing for bare metal, good adhesion power to steel, aluminum and galvanized steel.

Speed Primer Plus

PC-GT20

PC-GT20 SpeedPrimer Plus is a highly productive 2K primer surfacer designed for the high-production shop who demands premium quality and maximum throughput with reduced cycle time. It offers easy application and sanding with excellent gloss holdout for all topcoats.

1K Primer Surfacer

PC-40

Fast drying one pack primer surfacer, suitable to cover minor defects in surface of putty or existing finish. It is easy to apply with good filling power and ease of sanding for economical refinishing.



2K Primer Surfacer

PC-30

Multi-purpose double pack primer surfacer, with strong filling power and fine adhesion between coats, has excellent flexibility and impact resistance which can increase gloss and build of topcoat.

Filler

PC-50

Single-component putty with good filling power, fast drying, easy to apply and sand, suitable to cover small scratches, sand holes and pinholes.

Perfecoat Topcoat

Perfecoat Topcoat, a premium quality, single-stage, two-component refinish product designed to offer exceptional gloss and color match, it also stands out for its excellent shine and outstanding coverage, which gives great performance properties, indicated for general finishes or work in lines of Commercial Vehicles and Automotive Repainting.



Attributes

- Extraordinary performance
- Excellent covering and fading properties
- Quick drying, short flash-off time between coats
- Full color offer
- Easy to match and apply
- Software of color mixing system



PC Brief Topcoat User Instruction

Perfeccoat Topcoat Product Preparation - application for 1-stage colours

Compatible Surfaces
Old or original paintwork well sanded and cleaned
Primer-surfacer or Filler, sanded and cleaned
Plastic Adhesion Promoters
Surfaces must be prepared and cleaned correctly before application

	Topcoat	Hardener	Thinner
(Volume)	100	50	10-20
<18°C		PC-6611	PC-1
18°C - 24°C	Topcoat	PC-6612	PC-1/PC-2
25°C - 30°C		PC-6612	PC-2/PC-3
>30°C		PC-6613	PC-3



Pot life at 23°C:
2 hours with PC-6611 fast hardener
4 hours with PC-6612 standard or PC-6613 slow hardener



Spray gun	Fluid tip	Pressure
RP	1.3mm	2.0-2.5 bar
HVLP	1.3mm	1.8-2.0 bar



Coats & Thickness	2-3 coats, total 40-60um
Flash-Off Time	At 23°C, 5-10 minutes between coats
Air-Drying Time	Allow 15-20 minutes air drying time before force drying

Drying Time



	Tack Free	Dry to Polish
15°C	50mins	13hrs
23°C	30-40mins	6-8hrs
60°C	10mins	30mins

For more information, please refer to Perfecoat technical data sheet.

Perfeccoat Basecoat

Perfeccoat Basecoat is a state-of-the-art, premium quality basecoat/clearcoat system designed to provide outstanding color match for today's OEM finishes and excellent hiding.
Perfeccoat Basecoat is easy to spray and performs well in all shop environments.



Attributes

- Excellent color accuracy thanks to the specially selected effect particles and pigments.
- Tens of thousands of colors and variants including pearls, metallic and crystals.
- Flexible in application, easy and fast.

PC Brief Basecoat User Instruction

Perfeccoat Basecoat Product Preparation - application for 2-stage colours

Compatible Surfaces
Old or original paintwork well sanded and cleaned
Primer-surfacer or Filler, sanded and cleaned
Plastic Adhesion Promoters
Surfaces must be prepared and cleaned correctly before application

	Basecoat	Thinner
(Volume)	100	60-80
<15°C		PC-5
15°C - 30°C	Basecoat	PC-1/PC-2
>30°C		PC-3



For optimum application properties, apply the basecoat immediately after addition of Thinner. Use within same working day. Colours should be stored without the addition of the Thinner.



Spray gun	Fluid tip	Pressure
RP	1.3mm	2.0-2.5 bar
HVLP	1.3mm	1.8-2.0 bar



Coats & Thickness	2-3 coats, total 15-25um
Flash-Off Time	At 23°C, 5-10 minutes between coats
Air-Drying Time	Allow 10-15 minutes air drying time before force drying

For more information, please refer to Perfecoat technical data sheet.

Clearcoats

UHS
High Velocity Clear Coat

PC-6800
Double pack acrylic extra fast drying clear coat, easy application, good gloss, suitable for metal, solid basecoat and spot repair.

HS
Glamour Clear Coat

PC-870
High performance double component clear coat, high gloss, good build, strong chemical resistance, excellent color and gloss protective power, suitable for overall refinishing and spot repair.

MS
Clear Coat

PC-400
Developed with hyper branch technology, great paint flowing, high gloss and build, easy application, suitable for spots repairs and rapid repairs of large areas under low temperature.



Mirror Effect Clear Coat

PC-2800
high solid two-pack fast drying clear coat with mirror effect and deep rich gloss, suitable for overall refinish and spot repair while offering durability, yellowing resistance and excellent chemical resistance.

Binder

2K Binder

PC-6510

Resin solution used as an additive for spraying PC 2K solid colors. It improves the gloss of the paint film.

Mixing Ratio:

1. PC 2K Topcoat Colors:
PC-6510 2K Binder= 100:0-20
2. PC 2K Topcoat Colors+PC-6510 2K Binder :
PC 2K Series Hardener= 2:1



1K Binder

PC-6520

For PC-1K metallic basecoat, able to speed up air drying time, enhance the orientation of silver & pearl particles, and improve the application property.

Mixing Ratio:

1. Addition of PC-6520 to PC 1K metallic basecoat is 10-20% of total volume.
2. In 3-stage PC 1K pearl colors spraying, spraying the accordingly basecoat color firstly, then mixing PC-6520 with the chosen pearl color, adding 50-70% of PC-6520 according to the actual need, start spraying.
3. For basecoat colors with low opacity, such as red pearl, addition of PC-6520 should be less than 15% so as not to affect the hiding power of the paint.

Flip Controller

PC-60

Effect additive for metallic colors.

Mixing Ratio:

20% or less of PC-60 can be used to lighten the side tone of the metallic color and create a darker face with appearance of larger metallic sparkle. Excess addition would affect the adhesion between basecoat and clearcoat.

Accessories

Degreaser

PC-6911

Able to remove grease, oil and other surface contaminants to avoid paint film defects.

Thinner SRA

PC-6920

To dissolve the rough overspray area of new and existing finishes and achieve an invisible transition for panel repair.

Anti-Silicon

PC-6930

Additive for 2K Topcoat colors or clear coats, able to remove fisheyes or craterings on the paint film.

Retarder Solvent

PC-6960

Additive to prolong volatilization of solvent. Helps to produce a quality refinishing job of goodleveling and blushing-free at circumstances of high temperature, humidity or large area repair.



Matting Agent

PC-6940

Used to reduce the brightness of the paint film. Good matting ability with smooth paint film. Suitable for 1K and 2K system.

Quick Drier

PC-6980

Specially designed for 2K solid colors and clear coat, can speed up the dust free time and air drying time of paint film, suitable for spot repair or application at low temperature.

High Performance Repair



01 The Value Fit System

2K Primer Surfacer	PC-30
Clear Coat	PC-400

The Benefits

- Perfect Fit system for Collision Centers and Body Shops.
- Ideal for whole body or spot repair. Strong color presentation and protection.
- Available to choose fast or standard clear coats according to the temperature.
- Affordable and easy to application.

02 The Professional Fit System

2K Primer Surfacer	PC-30
HS Clear Coat	PC-2800 or PC-870

The Benefits

- Best solution for the customers who have high expectation on auto appearance.
- Excellent for whole body or spot repair, with perfect film and color presentation.
- Good corrosion resistance.

Note: Provided that the tonners are from the same PC line.

Rapid Repair



Fast Drying High Performance

03 The Premium Rapid Repair

Primer	PC-GT20
High Velocity Clear Coat	PC-6800

The Benefits

- Ideal solution for the spot repair with the spot quantity under 3. Meet with the requirement on film appearance.
- The drying time of primer and clear coat is within 30 minutes, which make it no problem for fast delivery.

Note: Provided that the tonners are from the same PC line.



PRODUCTS		PC-10	PC-GY1350	PC-30	PC-40	Topcoat	Basecoat	PC-400	PC-2800	PC-6800	PC-870
HARDENERS		---	PC-GY1360	PC-31	PC-40	PC-6611/6612/6613	---	PC-401/402/403	PC-6671/6672/6673	PC-6671/6672/6673	PC-6671/6672/6673
SUBSTRATES		Plastic parts such as PP, ABS, ABS+PC, ABS+PBT.	Sanded and dried existing finishes, steel, iron, aluminum, galvanized sheet, glass fiber reinforced plastic.	Sanded and dried existing finishes, all kinds of primer and putty.	Sanded and dried existing finishes and putty.	Sanded and dried existing finishes, putty, 1K and 2K primer.	Sanded and dried existing finishes, putty, 1K and 2K primer.	1K basecoat	1K basecoat	1K basecoat	1K basecoat
MIXING RATIO (Volume)		---	3.5:1:1-1.5	3:1:1-1.5	1:0.8-1	100:50:10-20	100:60-80	100:50:0-10	100:50:10-20	100:50:0-10	100:50:5-10
MIXING RATIO (Weight)		---	5:1:1-1.5	4:1:1-1.5	---	---	---				
PHYSICAL TONE		---	Grey	Grey	Grey	---	---	---	---	---	---
POT LIFE		---	4-5hrs	30mins	---	2 hrs with 6611	---	2 hrs with 401	2 hrs with 6671	within 1 hr	2 hrs with 6671
23°						4 hrs with 6612/6613		3 hrs with 402/403	4 hrs with 6672/6673		4 hrs with 6672/6673
Application Viscosity		---	14-16s	20-24s	16-18s	16-18s	14-16s	16-18s	16-18s	16-18s	16-18s
DIN Cup 4 at 20°C											
PRESSURE											
RP		2.0-2.5Bar	1.8-2.0Bar	1.8-2.0Bar	1.8-2.0Bar	2.0-2.5Bar	2.0-2.5Bar	2.0-2.5Bar	2.0-2.5Bar	2.0-2.5Bar	2.0-2.5Bar
HVLP		1.8-2.0Bar	---	---	---	1.8-2.0Bar	1.8-2.0Bar	1.8-2.0Bar	1.8-2.0Bar	1.8-2.0Bar	1.8-2.0Bar
FLUID TIP											
RP		1.3mm	1.6mm	1.6mm	1.6mm	1.3mm	1.3mm	1.3mm	1.3mm	1.3mm	1.3mm
HVLP		1.3mm	---	---	---	1.3mm	1.3mm	1.3mm	1.3mm	1.3mm	1.3mm
APPLICATION		1-2 coats	1-2 coats	2-3 coats	2-3 coats	2-3 coats	2-3 coats	2-3 coats	2-3 coats	2-3 coats	2-3 coats
		4-5 um	15-20 um	40-60 um	25-35 um	40-60 um	15-25um	40-60 um	40-60 um	40-60 um	40-60 um
FLASH OFF between coats		3-5mins	5-10mins	5-10mins	5-10mins	5-10mins	5-10mins	5-10mins	5-10mins	---	5-10mins
Air drying		5-10mins	15-20mins	15-20mins	---	15-20mins	10-15mins	10-15mins	15-20mins	---	15-20mins
Tack Free											
15°C		---	---	---	---	50mins	---	50mins	70mins	30mins	80mins
23°C		---	---	---	---	30-40mins	---	40mins	60mins	15mins	60mins
60°C		---	---	---	---	10mins	---	10mins	15mins	5mins	20mins
DRY TO POLISH											
15°C		---	24hrs (15°C)	3hrs (15°C)	45mins (15°C)	16hrs	---	17-18hrs	10hrs	3hrs	17hrs
23°C		---	12hrs	2hrs	30mins	6-8hrs	---	6hrs	6hrs	40mins	6hrs
60°C		---	60mins	30mins	---	30mins	---	30mins	40mins	10mins	40mins