



YUNYI SALES DEPARTMENT



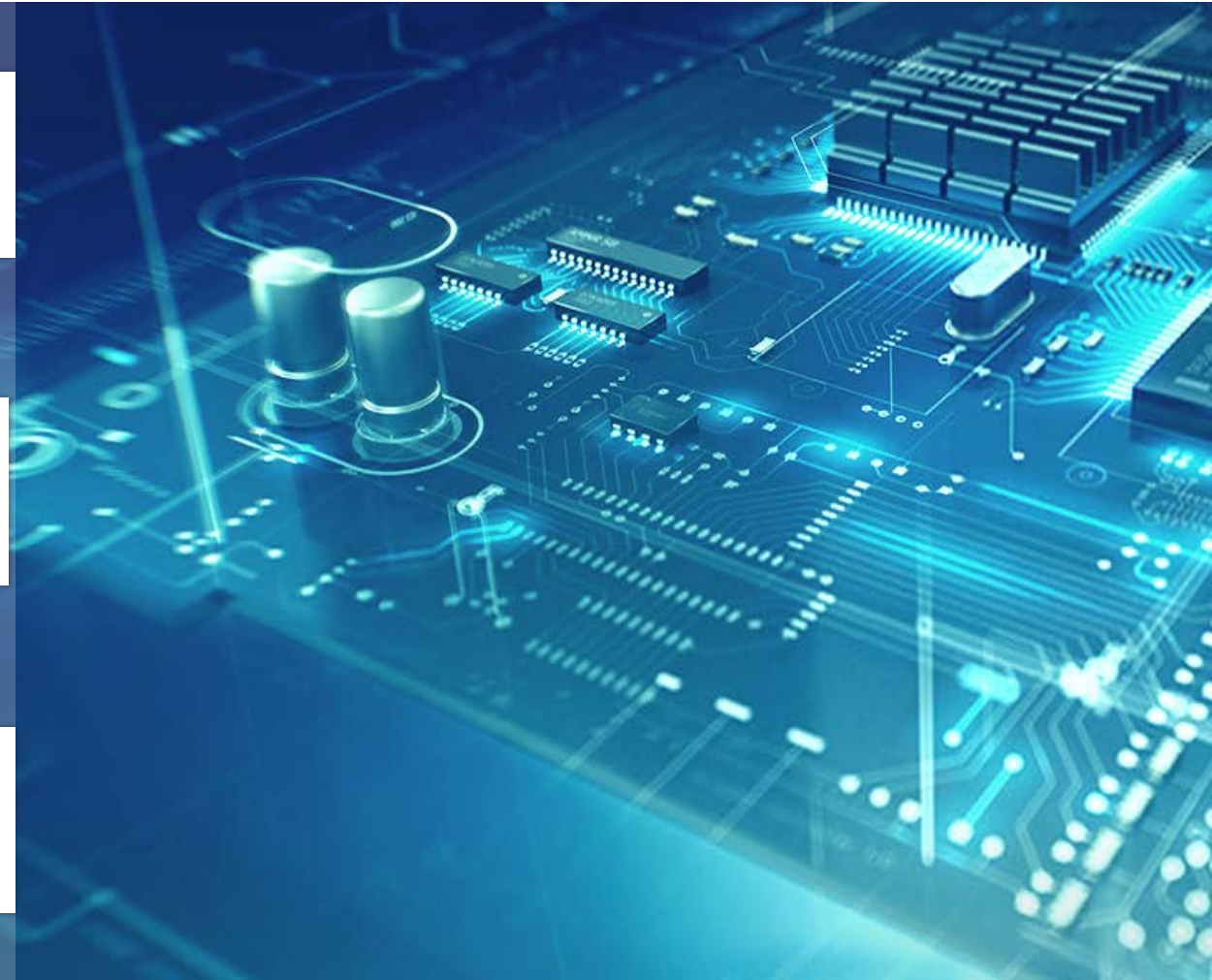
The Most Competitive Chinese Auto-electronics Enterprise

Jiangsu Yunyi Electric Co., Ltd
(Stock Code: 300304)

01 | Company Profile

02 | Core Competence

03 | Product & Market



01 | Company Profile

02 | Core Competence

03 | Product & Market



Corporate Culture

➤ Vision

Technology makes for better travel.

➤ Mission

To become a leader in the field of intelligent control.

➤ Values

Assist customers to be successful.

Focus on value-creation.

Open and honest.

Strivers are highly praised.

1. Company Profile



Jiangsu Yunyi Electric Co., Ltd (Stock Code: 300304)

A high-tech corporation specialized in R&D, manufacture and marketing of automotive electronic parts.



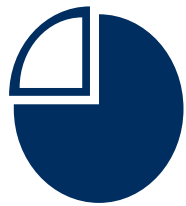
**22
YEARS**

**Industry
Experience**



**1.2
BILLION**

**Annual
Revenue**



**6
BRANCHES**

**Clear
Specilization**



**1600
PEOPLE**

Personnel



**3
CENTERS**

**R&D
Laboratories**



**498
PATENT**

**Strong
Intelligence**



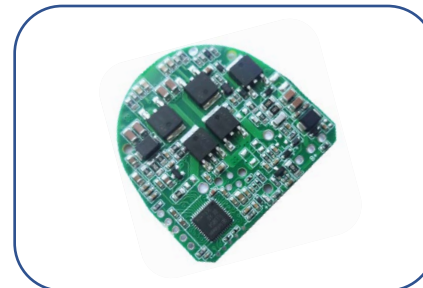
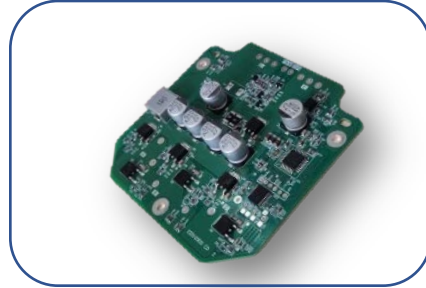
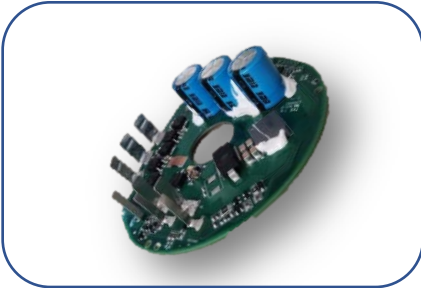
**120
COUNTRIES**

**Worldwide
Service**

1. Company Profile



➤ Jiangsu Yunyi Electric Co., Ltd (Motor Controller)



➤ Branches (Core Electronic Auto-parts)

Vehicle Power Controller

No.1 in China
No. 3 in The World



Vehicle Wiper Blade System

No. 3 in China

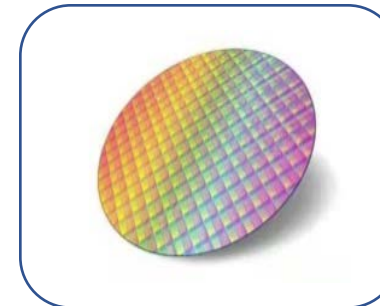


TPMS

No. 3 in China



Semiconductor



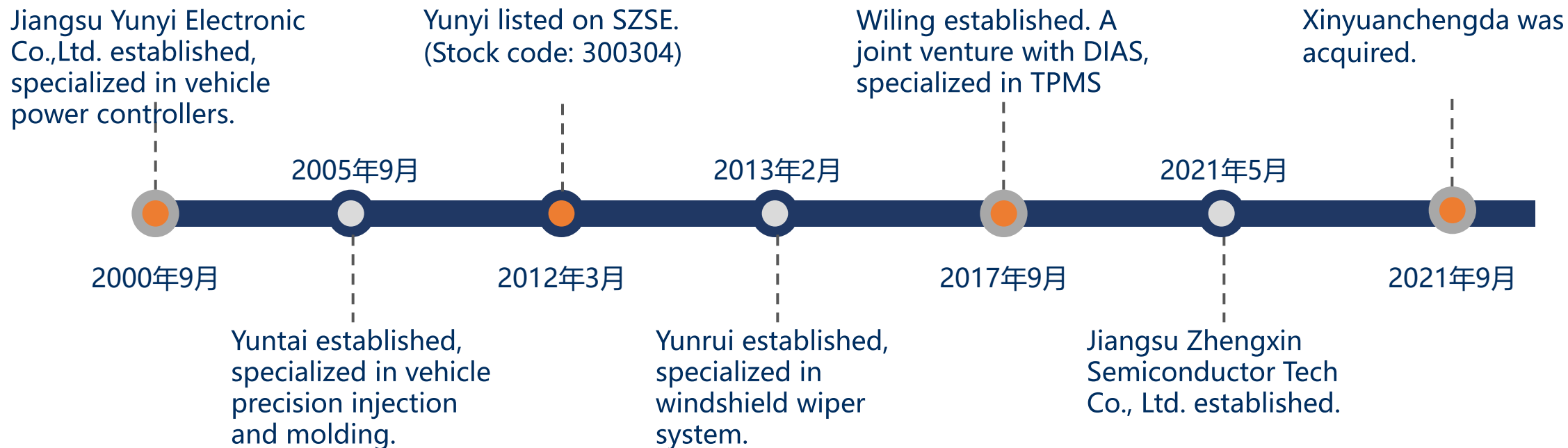
NOx Sensor



1. Company Profile



➤ Milestone



Yunyi Electronic Co.,Ltd. has always been committed to the R&D, manufacturing and marketing of automotive brushless motor controller.

1. Company Profile



➤ Quality Certification: IATF16949 ISO14001 ISO45001



01 | Company Profile

02 | Core Competence

03 | Product & Market



2. Core Competence

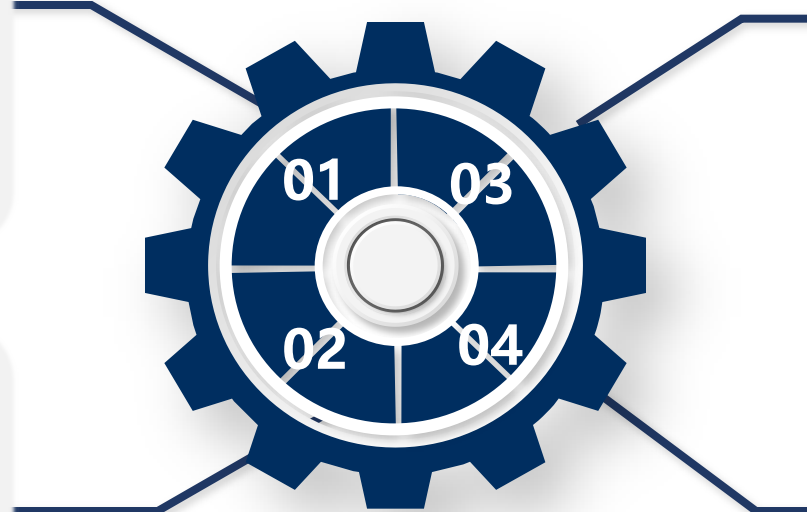
➤ High vertical integration: from base chemicals to finished products in single one factory.

Independent R&D and Design

- ◆ Software architecture and program
- ◆ Ceramic chip
- ◆ Hardware circuit and layout
- ◆ Product structure

Vertical Integration of Production Line

- ◆ Semiconductor Packaging
- ◆ PCBA Production
- ◆ Self-production for mould and structural components



Full Automatic Production

- ◆ Full automatic SMT Production
- ◆ NOx sensor assembly
- ◆ Calibration and test

Total Quality Management

- ◆ IATF16949
- ◆ ISO14001
- ◆ OHSAS18001
- ◆ VDA6.3 system
- ◆ ERP, PLM, WMS, MES, OA

2. Core Competence

➤ R&D Team



Dr. Lin

- Doctor degree in Kyushu University
- Member of Solid State Ionics Expert Committee
- 4 National Major Project and Science and Technology Progress Award
- 25 authorized invention patents and 10 PCT patents
- Draft 9 industry standards



Dr. Meng

Technical Director

- Doctor Degree
- IEEE Premium Member
- Over 10-year R&D experience in vehicle motor and controller
- More than 10 patents



Ms. Bai

Deputy Technical Director

- Doctor Degree
- Over 10-year R&D experience in power supply, electric controller and EMC
- More than 10 SCI/EI journal papers
- More than 10 patents



Mr. Yu

Chief Engineer

- Master Degree
- Over 10-year R&D experience in vehicle software of electric controller
- More than 10 patents
- More than 10 motor controller software copyright



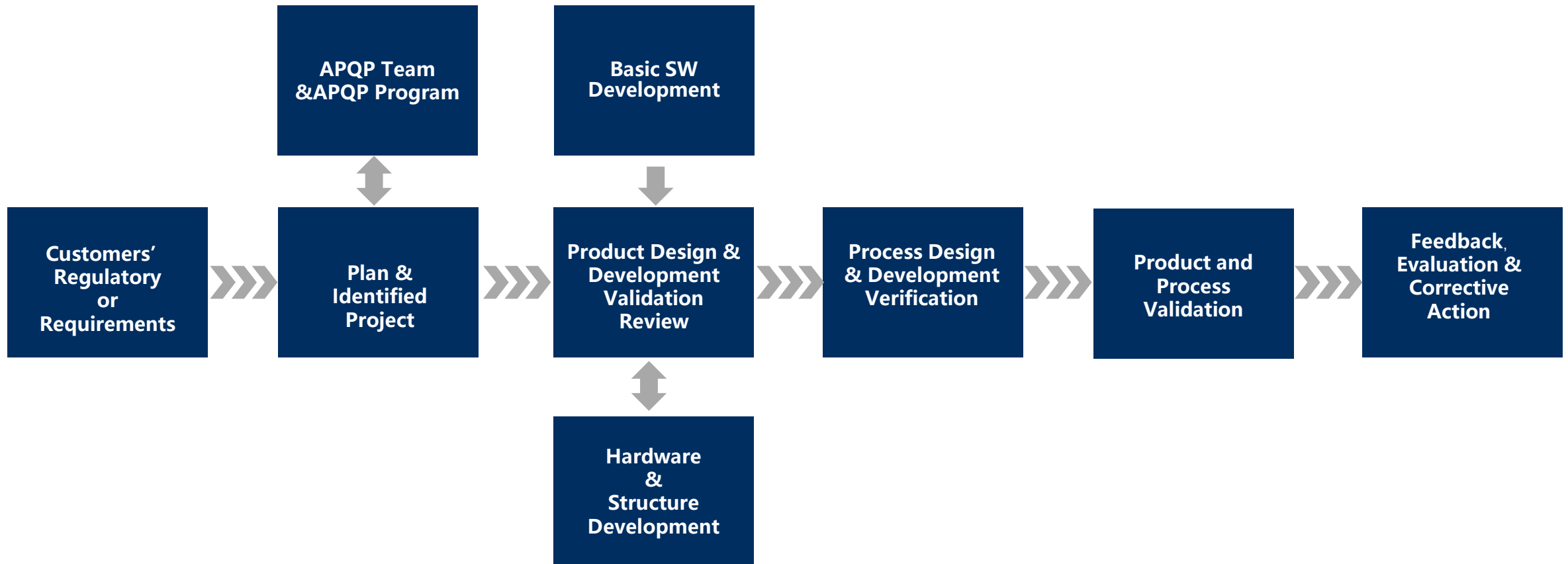
Mr. Si

Chief Engineer

- Master Degree
- 7-year R&D experience in motor control algorithm
- 2 EI journal papers
- 5 patents and more than 10 software copyrights

2. Core Competence

➤ **Design and develop products in strict accordance with APQP process**



2. Core Competence

➤ R & D Validation Equipment-National ISO17025 Certified Lab

TC Tester

Salt Spray Tester

Thermal Shock Tester

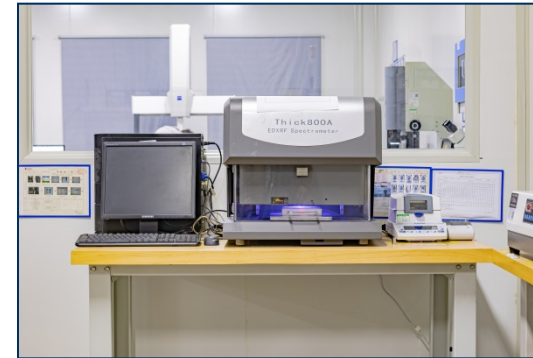
Vibration Tester

X-Ray

2000x Microscope

7637-5A Tester

High Temperature and Humidity Test chamber



2. Core Competence



➤ Smart Workshop:

Area: 26000m²

Investment: RMB 200 million



2. Core Competence

➤ Advanced Production Process and Equipment



Vacuum Reflow Soldering

- At the peak temperature of reflow soldering, the product enters a closed cavity, and vacuum welding is performed to reduce the voids in the soldering, and the 20% bubble rate is reduced to less than 3%, which reduces the thermal resistance of the product and improves the reliability and lifetime of the product.



Wire Machine

- Low friction wire path improves welding arc consistency at high speed
- Fine Wire Paving Flux Wire Path Improves Consistency of Welding Arc at High Speeds
- Fine wire auxiliary arc reduces wire tension



Line Spray

- Multi-track spraying can be completed by spot spraying, linear spraying and curve spraying
- The spray edge has good sharpness, good uniformity, and spray shadow effects can be eliminated.
- The transmission and control system with high speed, high reliability and high stability, X, Y, Z direction movement adopts the linear stem group made of high precision ball screw and linear rolling guide.
- The precision nozzle is stable and has good flow regulation, which can achieve reliable and uniform spraying.

2. Core Competence

➤ Precision Production Equipment



Solder Paste Printer

Printing Accuracy: 20um

Printing Thickness: 0.2mm—
3.8mm



SMT Equipment

SMD Accuracy: ± 0.025 mm

Minimum Size: 0.3X0.15mm

Maximum Size: 150X25mm,

Height: 30mm



AOI Equipment

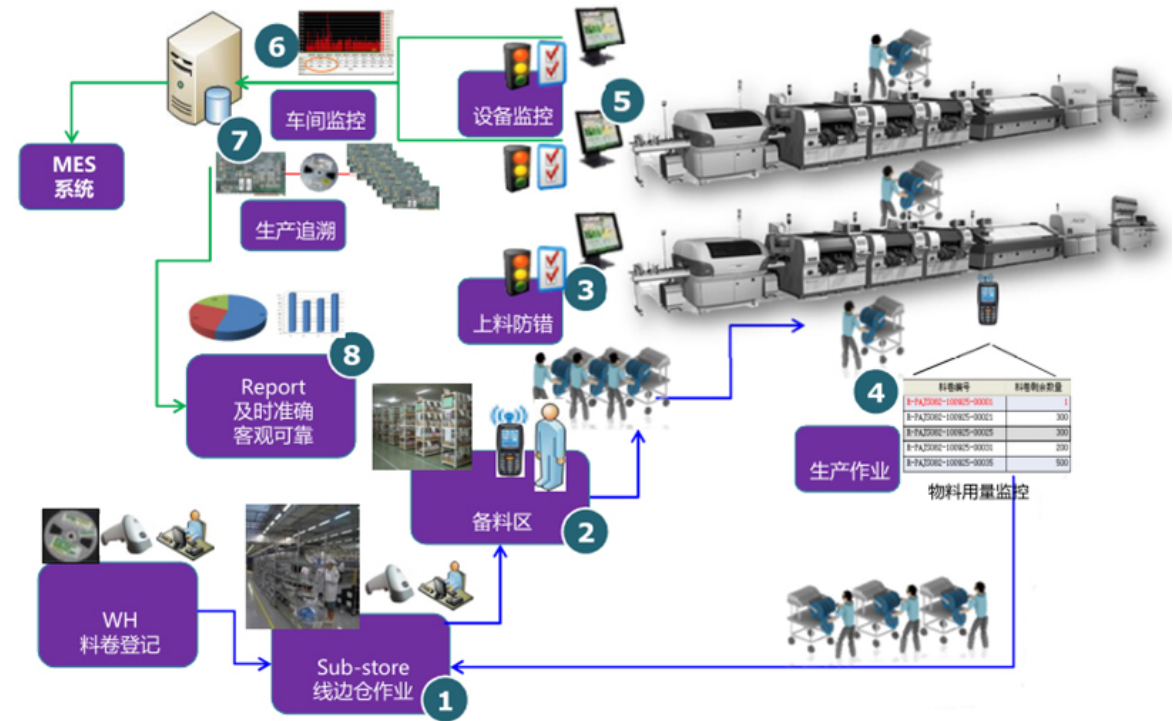
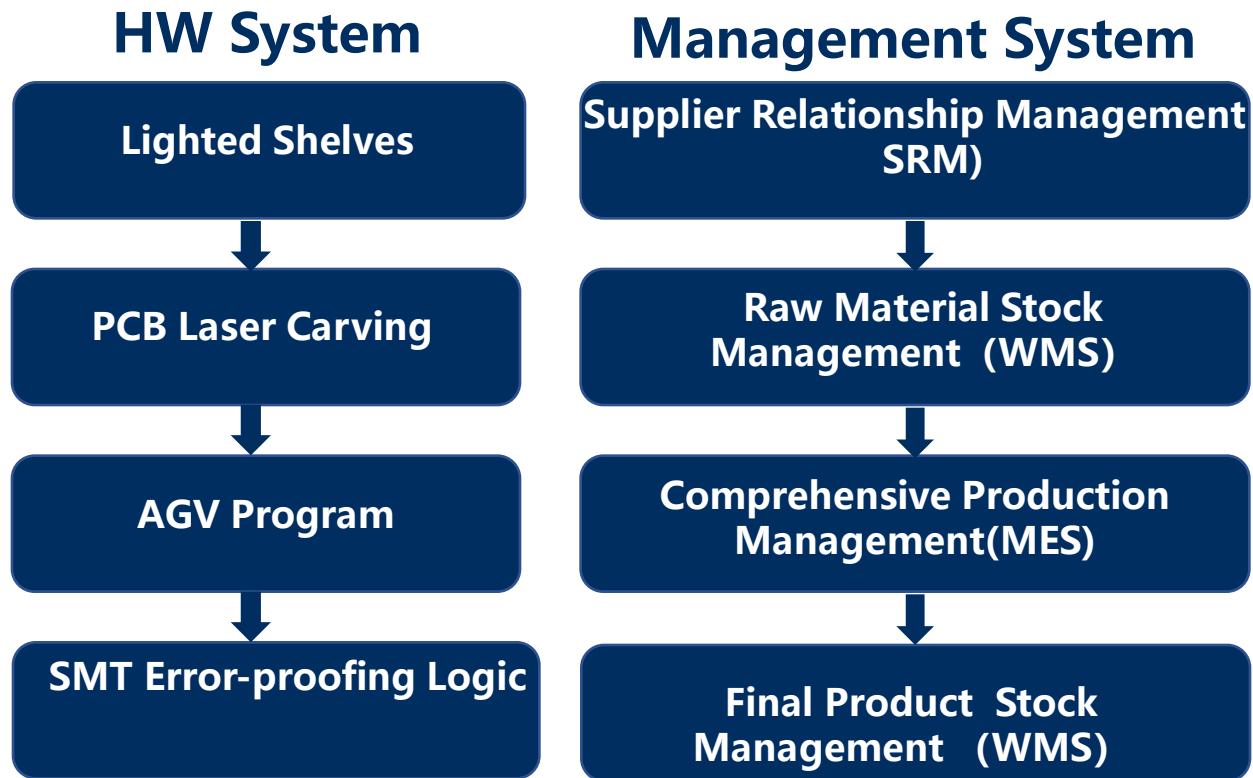
4MPIX Camera

Pixel Resolution: 15um

SPC Analysis

2. Core Competence

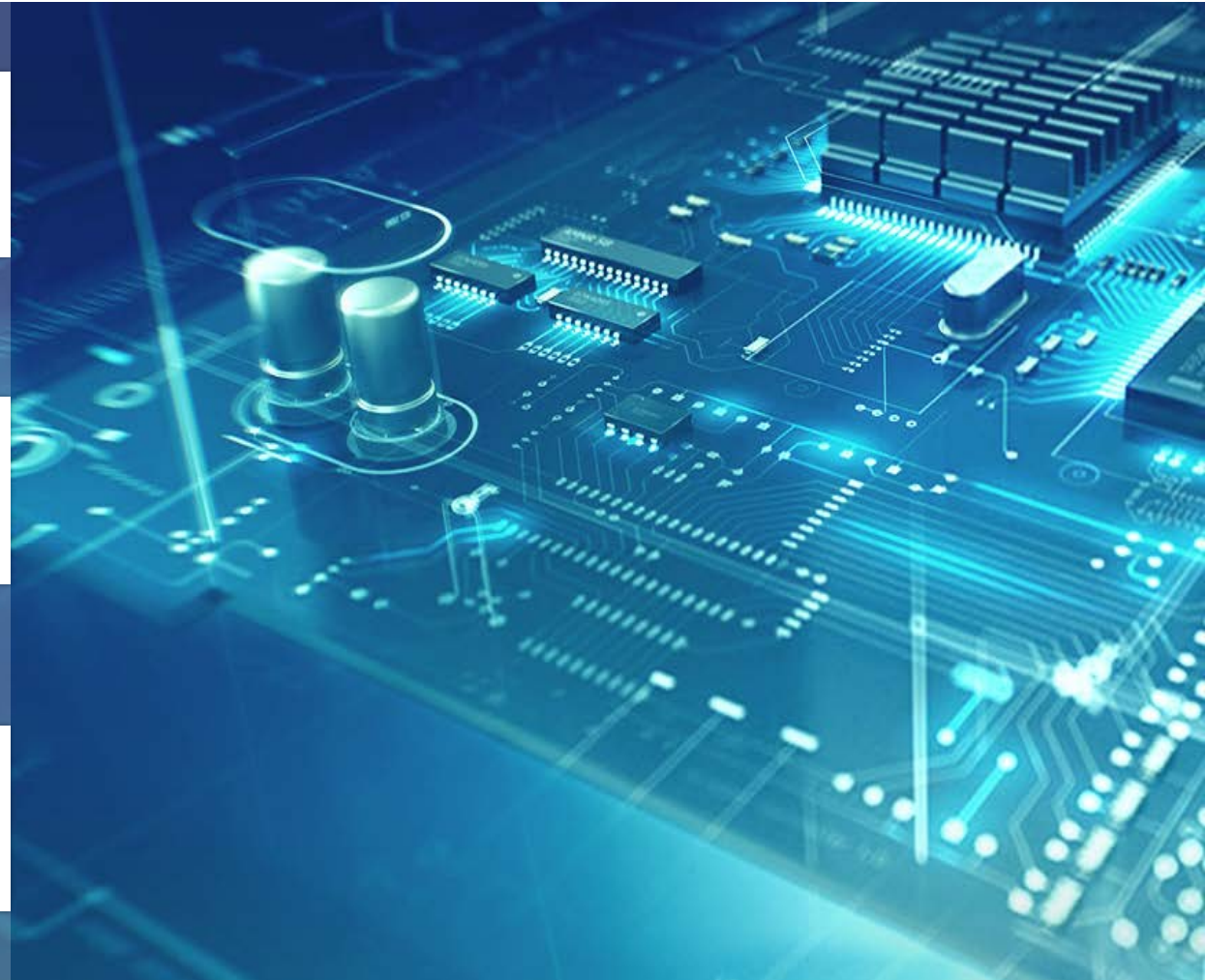
➤ Production Capacity—Industry 4.0: Anti-error-material, Anti-sluggish, Traceability, Equipment management



01 | Company Profile

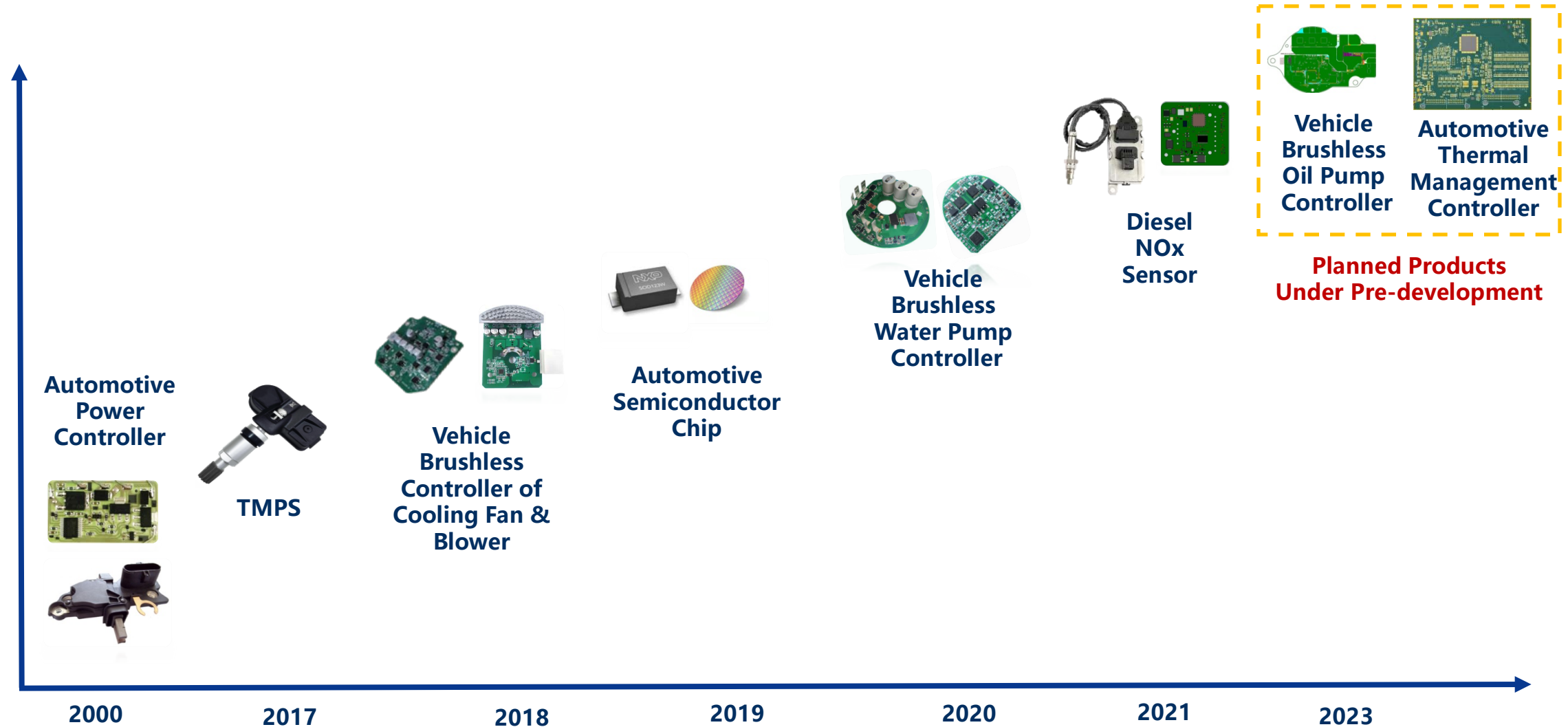
02 | Core Competence

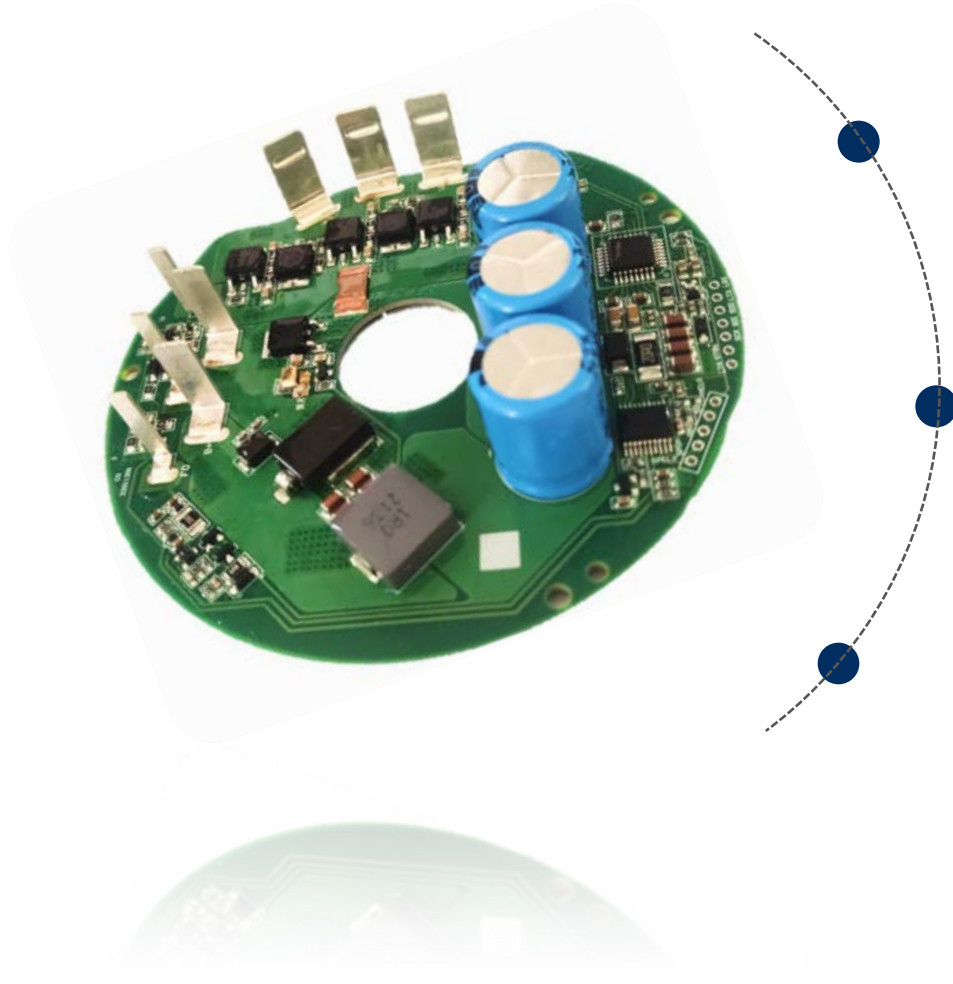
03 | Product & Market



3. Product & Market

➤ Milestones of Yunyi Products





✓ Product Profile

- Cooling Fan Controller
- 24V System
- Engineering Vehicle
- 300W~500W
- Inductive FOC



✓ Function Description

- | | |
|-------------------------------|---------------------------------|
| • Fault Feedback | • Over/under-voltage Protection |
| • Fan-starting | • Rotation-Clogging Protection |
| • Energy-low-loss Model | • Overcurrent Protection |
| • Over-temperature Protection | • Reverse Connection Protection |
| | • |



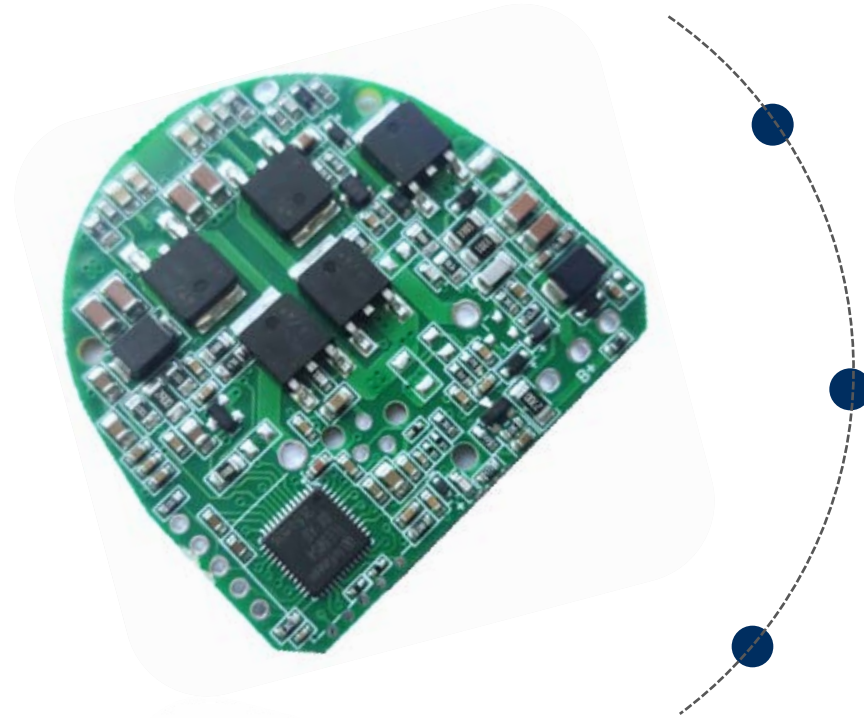
✓ Product Profile

- Cooling Fan Controller
- 12V System
- Passenger Car
- 200W~500W
- Non-inductive FOC



✓ Function Description

- | | |
|---------------------------------|---------------------------------|
| • Fault Feedback | • Over/under-voltage Protection |
| • Fan-starting | • Overcurrent Protection |
| • Energy-low-loss Model | • Reverse Connection Protection |
| • Over-temperature Protection | • |
| • Over/under-voltage Protection | |



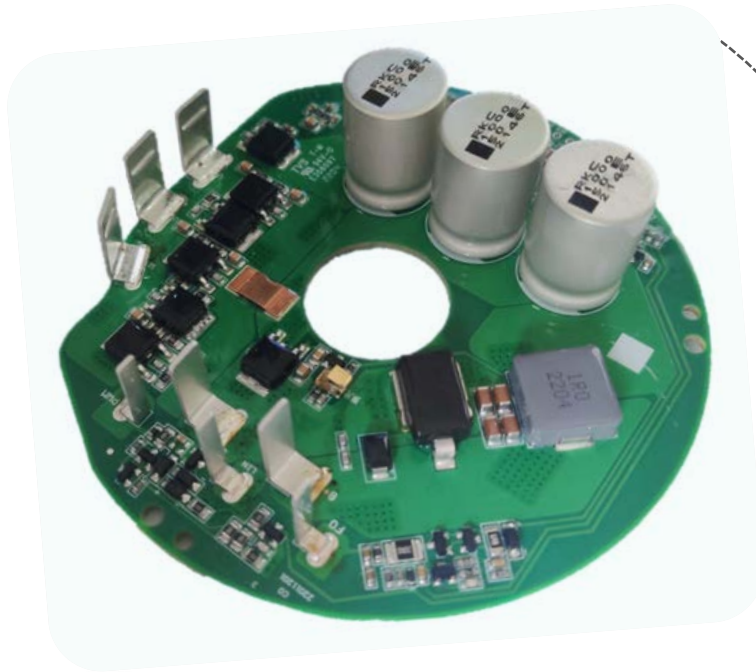
✓ Product Profile

- Cooling Water Pump Controller
- 12V System
- Passenger Car
- 20W~50W
- Sensitive Square Wave



✓ Function Description

- | | |
|---------------------------------|---------------------------------|
| • Fault Feedback | • Rotation-Clogging Protection |
| • Energy-low-loss Model | • Overcurrent Protection |
| • Over-temperature Protection | • Reverse Connection Protection |
| • Over/under-voltage Protection | • No-load Protection |
| | • |



✓ Product Profile

- Cooling Water Pump Controller
- 12V System
- Engineering Vehicle
- 200W~400W
- Non-inductive FOC



✓ Function Description

- Fault Feedback
- Energy-low-loss Model
- Over-temperature Protection
- Over/under-voltage Protection
- Rotation-Clogging Protection
- Overcurrent Protection
- Reverse Connection Protection
- No-load Protection
-



✓ Product Profile

- Automotive Blower Controller
- 12V System
- Passenger Car
- 200-300W
- Non-inductive FOC



✓ Function Description

- | | |
|---------------------------------|---------------------------------|
| • Fault Feedback | • Rotation-Clogging Protection |
| • Blower-starting | • Overcurrent Protection |
| • Energy-low-loss Model | • Reverse Connection Protection |
| • Over-temperature Protection | • |
| • Over/under-voltage Protection | |

3. Product & Market

➤ Partners

Engineering Vehicle



Passenger Car



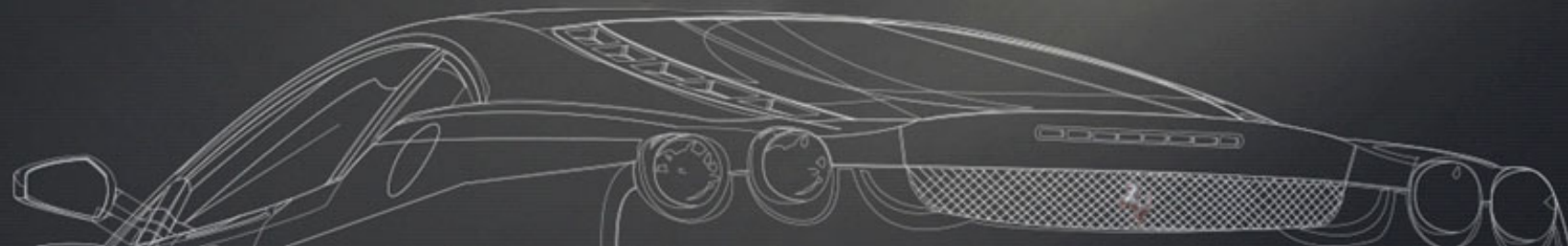
System Manufacturer



An abstract background graphic consisting of a complex network of blue lines and dots, forming a shape that resembles a stylized cloud or a molecular structure. The lines are thin and light blue, while the dots are small and dark blue.

**Yunyi Electronic Co.,Ltd. has always been committed to the R&D,
manufacturing and marketing of automotive brushless motor
controller,
as well as creating value for customers and assisting customers to
realize commercial success!**

THANKS



IMPRESSION · CROSSING · OVERLOOKING

YUNYI[®] 云意电气

www.yunyi-china.com