



FAST PULLER



What is it?: chain traction system with a force of 250 kg which is fixed to the floor by means of a vacuum system that fixes the L or stretcher.

Who?: its base is sealed by means of a rubber that adheres to the floor and withstands up to 2,250 kg and a working pressure of 4 bar. **Patent No. (EPO) 22382091.**

Why?: thanks to its mobility, lightness, small size and stability, it allows 360° repairs without the need for repairs 360° without the need for supports.

Who is it for?: it is ideal for express repairs that require quick repairs on all types of panels: wings, doors, running boards, gates, etc... In this way, we reduce repair times and the time required for the transfer of courtesy vehicles.

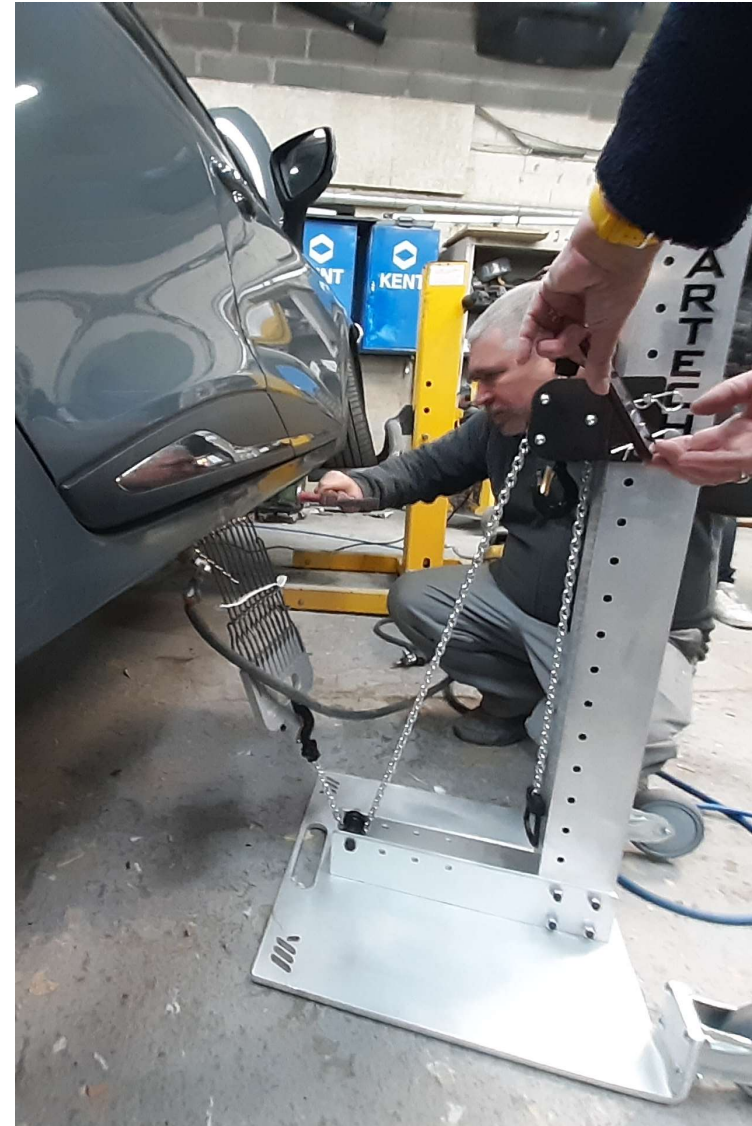
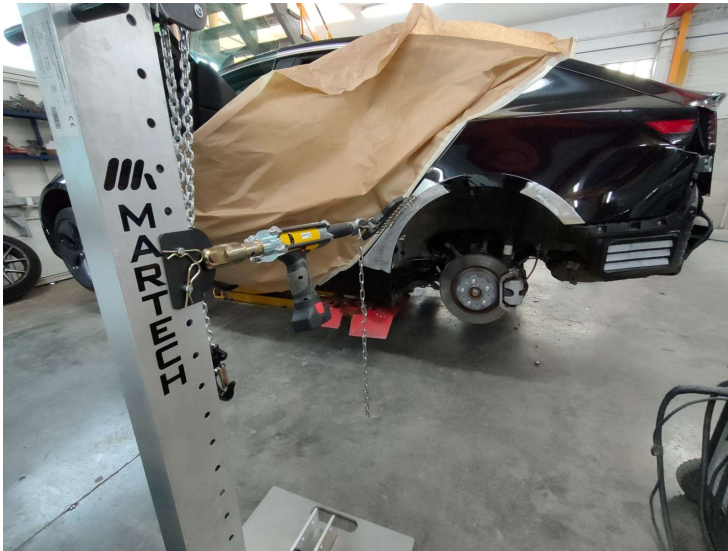
EXPRESS REPAIRS ?

- Vehicles awaiting repair benches
- Occupied posts
- Production delays
- Inefficient work
- Lost time
- Time is money



IMPACT ON PRODUCTION

- Move vehicles from lifts and workstations.
 - Daily impact on revenue between 650-1000€.
- No waiting for free positions - repairs anywhere in the workshop.
- Avoid potential damage due to poor positioning of supports on the vehicle.
- Safe working avoiding damages and injuries.
- Use in vehicles without running boards
- Quick repairs = less courtesy vehicles.





SPECIFICATIONS

- ***Vacuum ejector at 4 bar***
- ***Manufactured from high quality aluminium. Weight: 15,5kg***
- ***Maximum working height 1300mm***
- ***Pulling force 250kg***
- ***For all types of express repairs***
- ***Low drawback for low pulls***
- ***Solid rubber sealing base.
No support required.***
- ***Equipped with a wheel system for great mobility.***

CONSTRUCTION DETAILS



- *Air inlet*

- *Handles for transport*



- *Muffler*

- *Hoist with hook*



- *Wheels with rubber and bearings*

- *Sealing rubber*





Load test:
2.250 kg



ACCESSORIES

SP706336 MULTIPLE HOOK



SP740102 MULTIPAD



SP740001 ELECTROPULLER



SP706329 VACUUM BASE COUNTERSHOT



EXCEEDING TARGETS

- **Too expensive**

One occupied workstation costs 650/1000 € per day

- **I have vehicles without running boards**

Waste of time looking for the perfect support

- **Never needed it before**

Decrease of current cycle time = Improvement of production

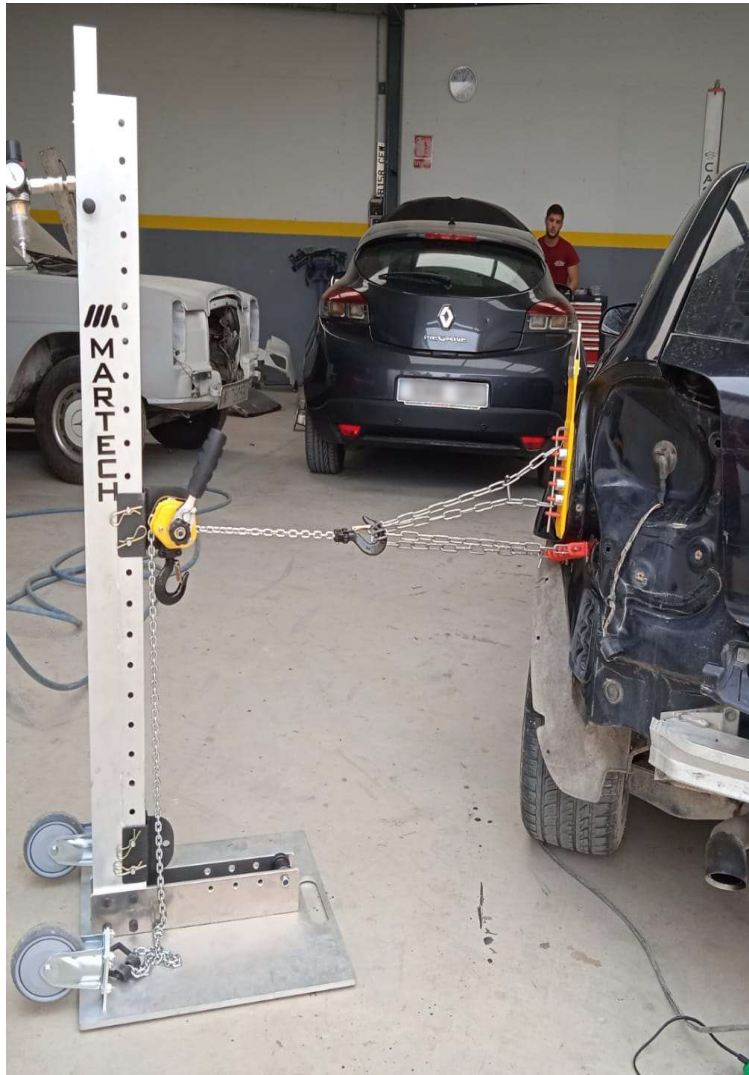
- **I use repair Minibenchches**

The Fast Puller is an add-on for quick repairs without the need to occupy a workstation.

BODY SHOPS (MULTIPAD EXAMPLES)



BODY SHOPS (MULTIPAD EXAMPLES)



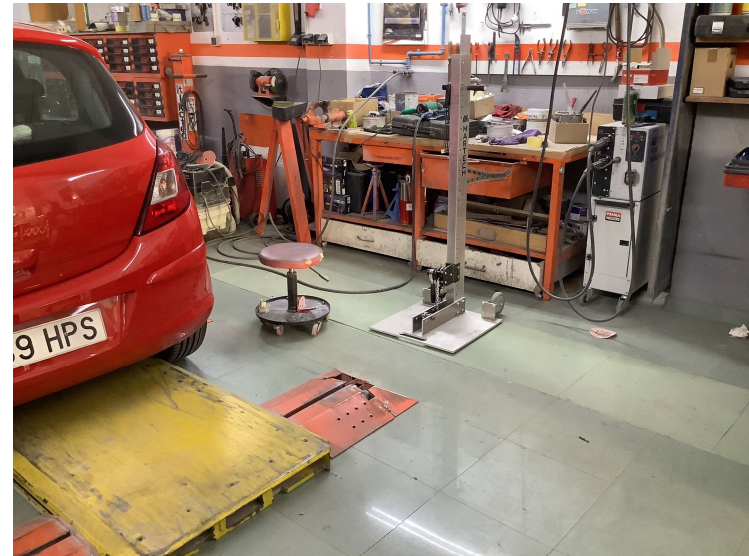
BODY SHOPS (MULTIPLE HOOK)



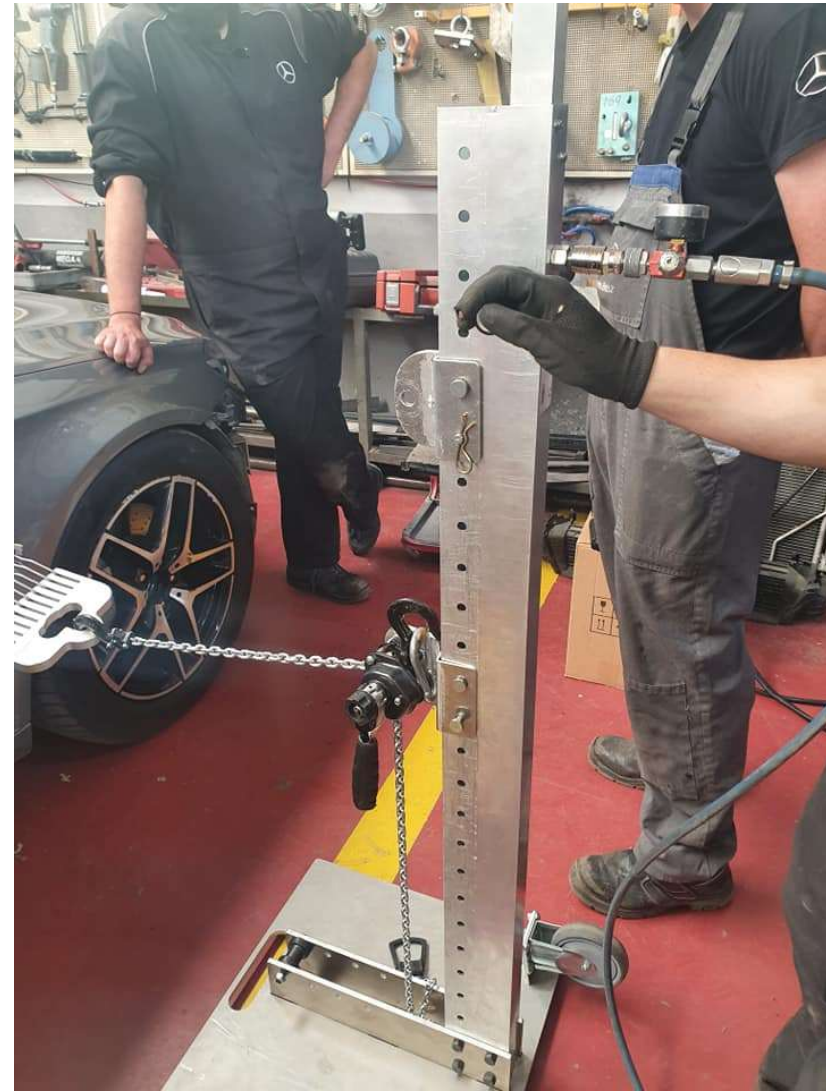
BODY SHOPS (MULTIPLE HOOK)



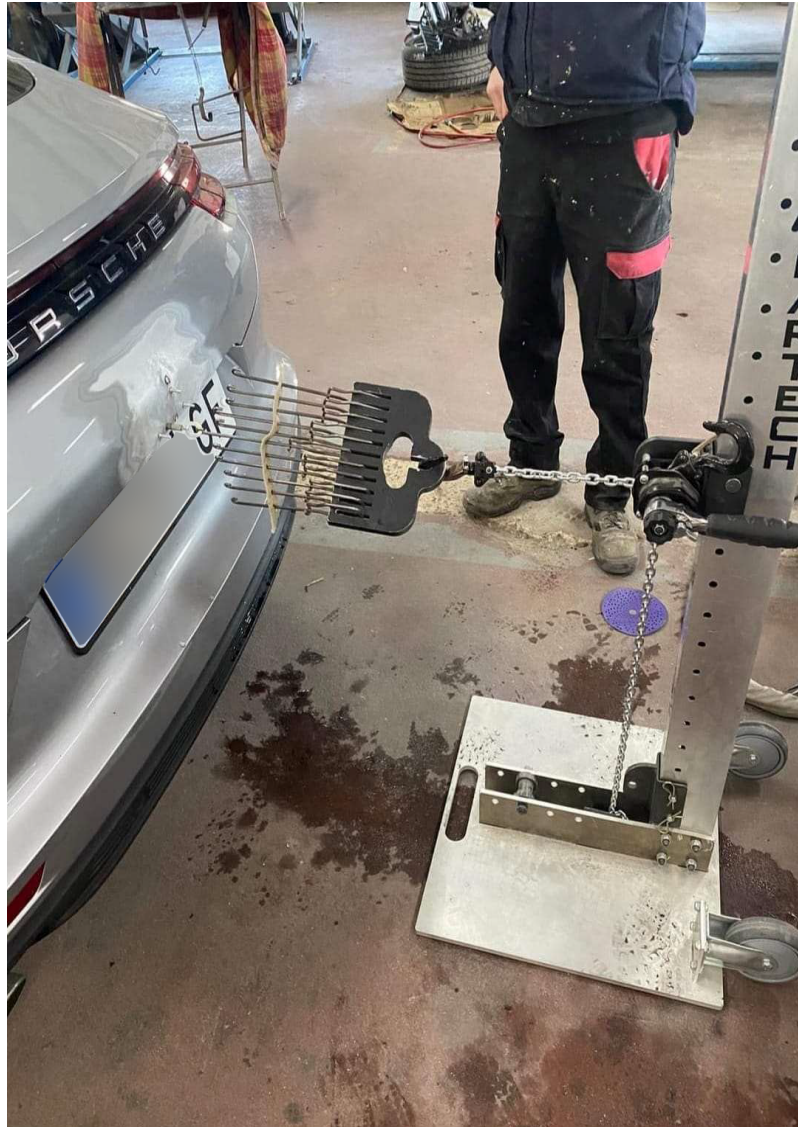
BODYSHOPS (PLACES WITH LIMITED SPACE)



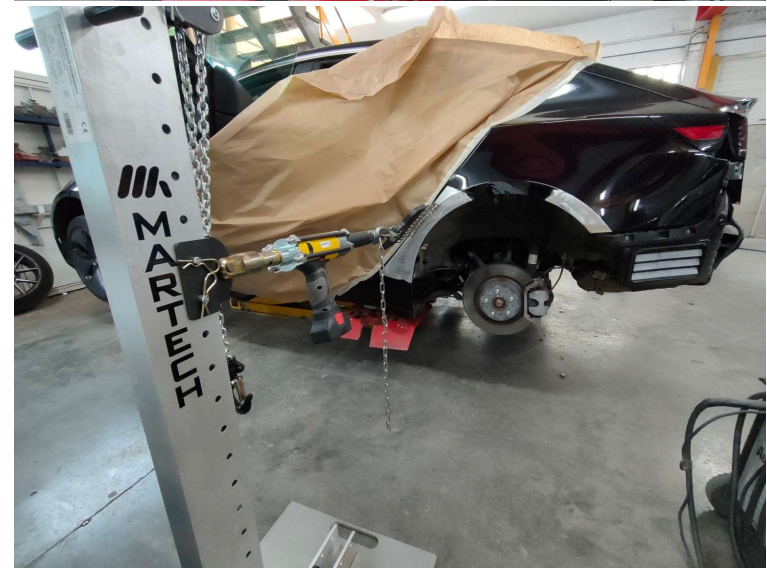
BODY SHOPS (ALUMINIUM)



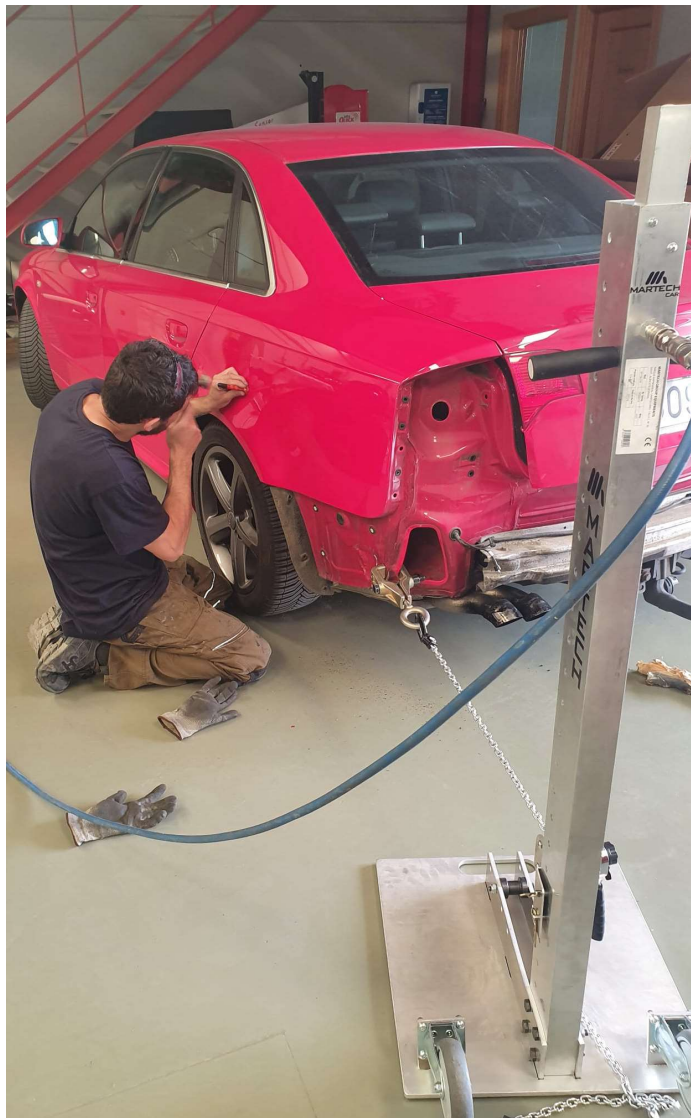
BODY SHOPS (ALUMINIUM)



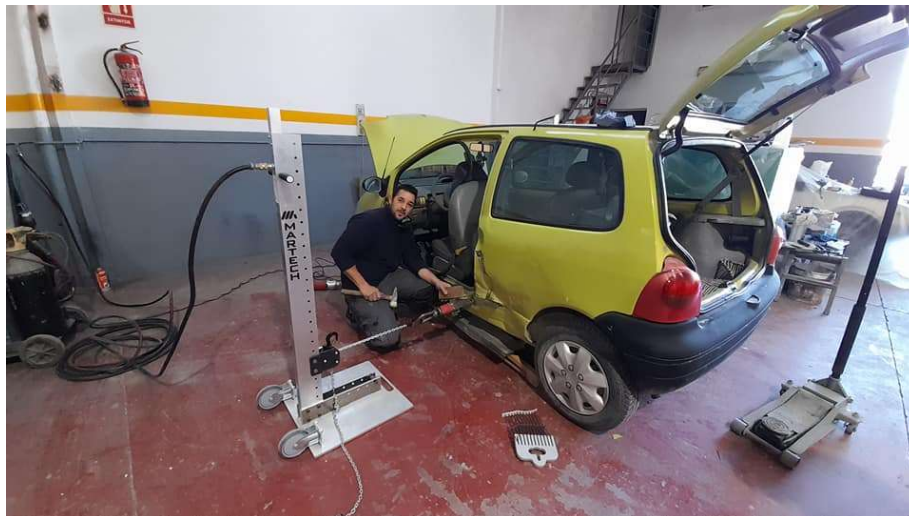
BODY SHOPS (ELECTRIC VEHICLES)



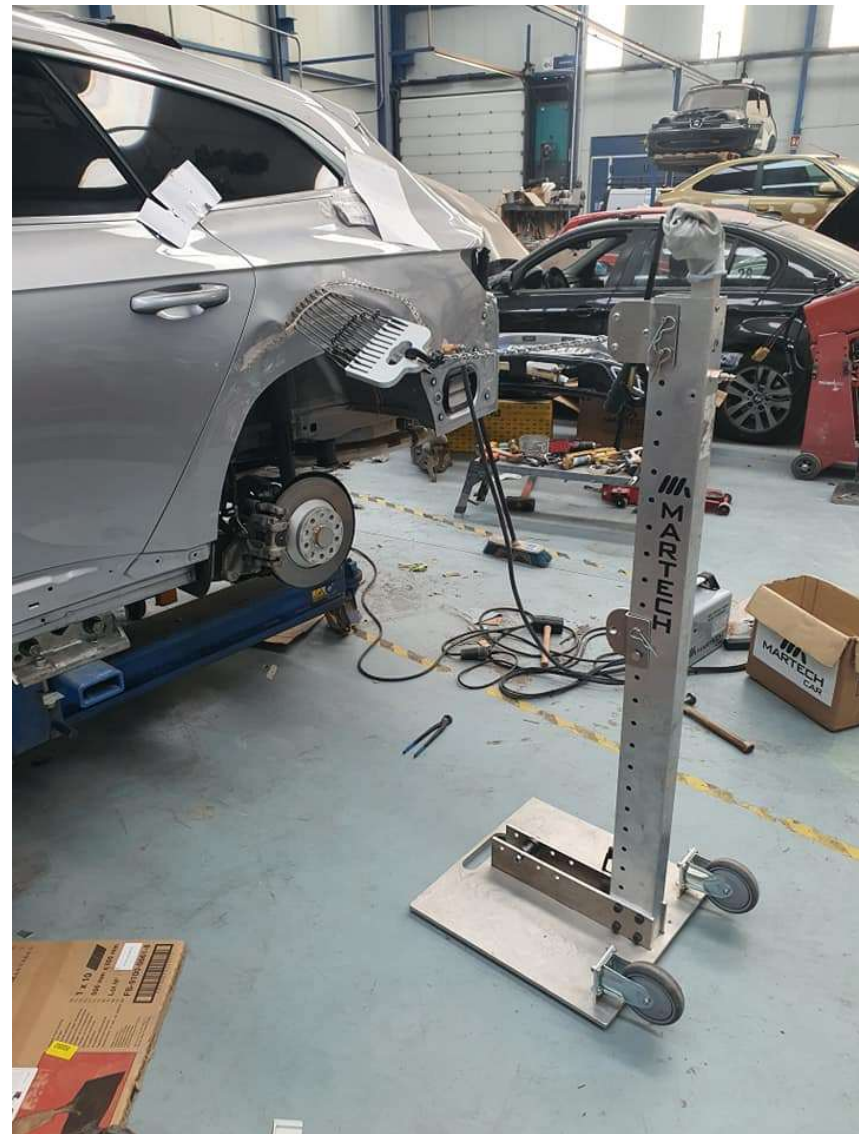
BODY SHOPS (CLAMP PULLS)



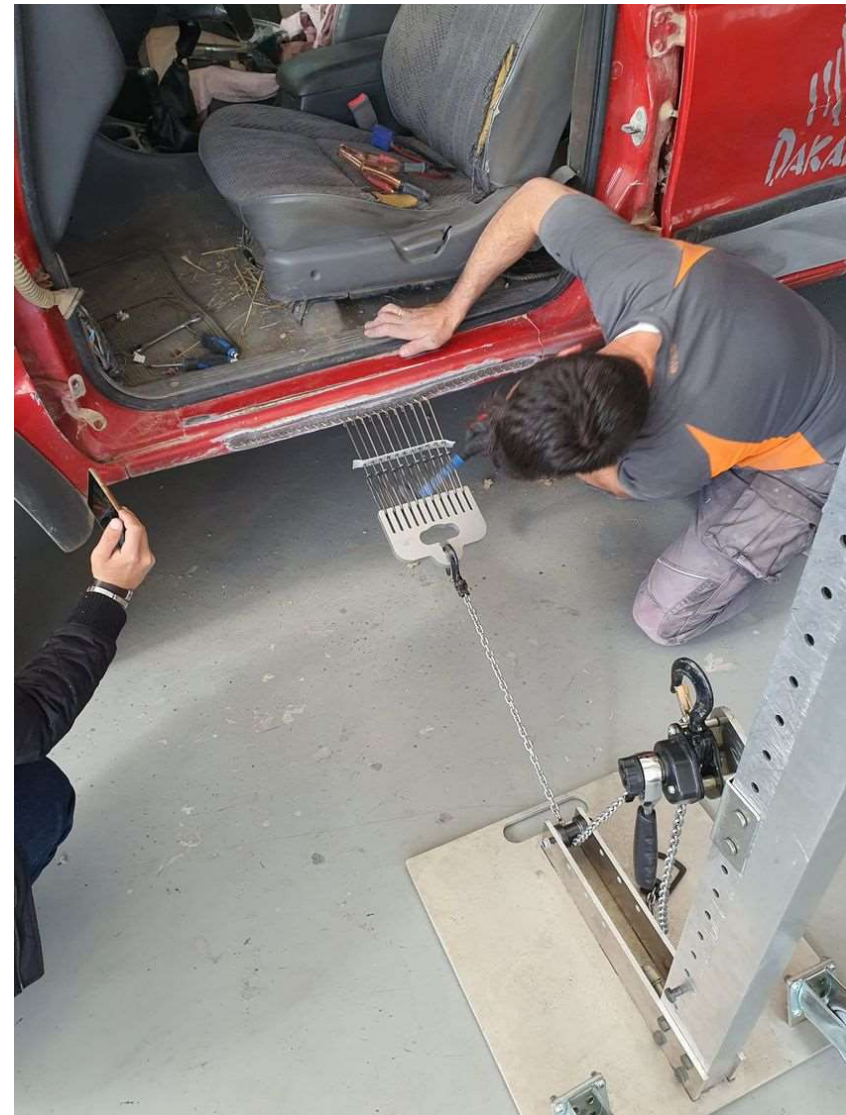
BODY SHOPS (CLAMP PULLS)



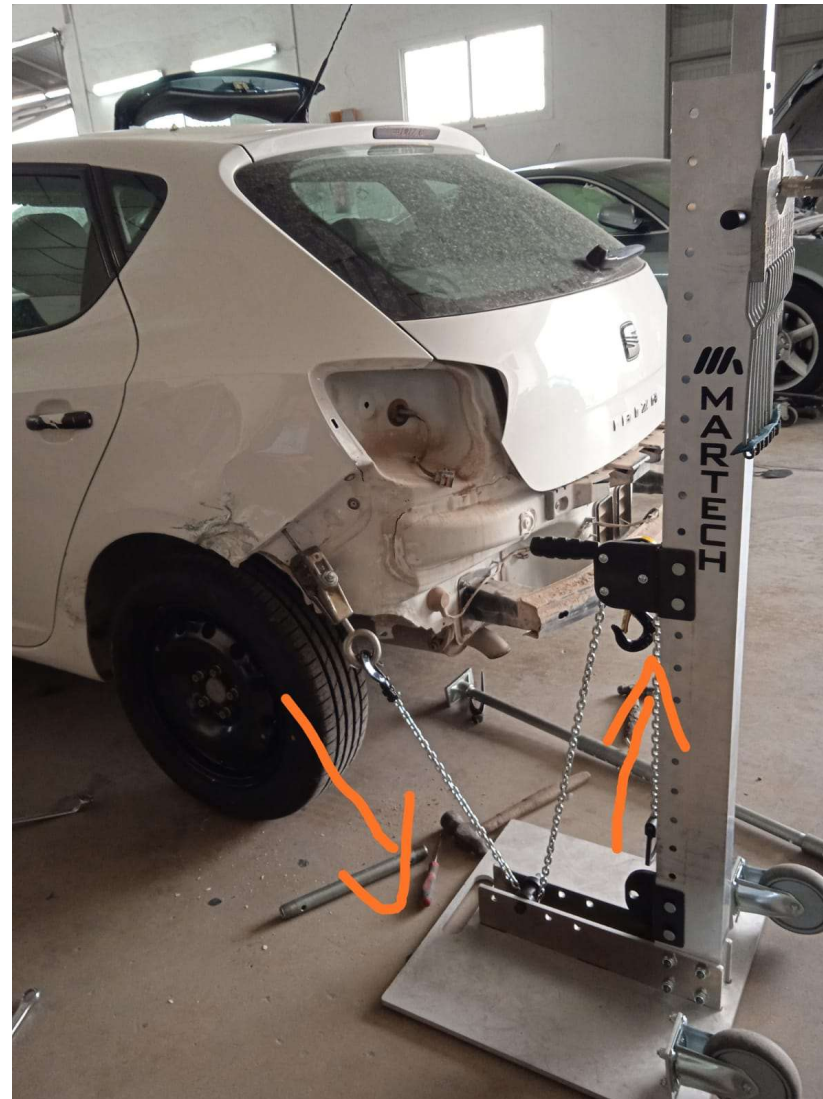
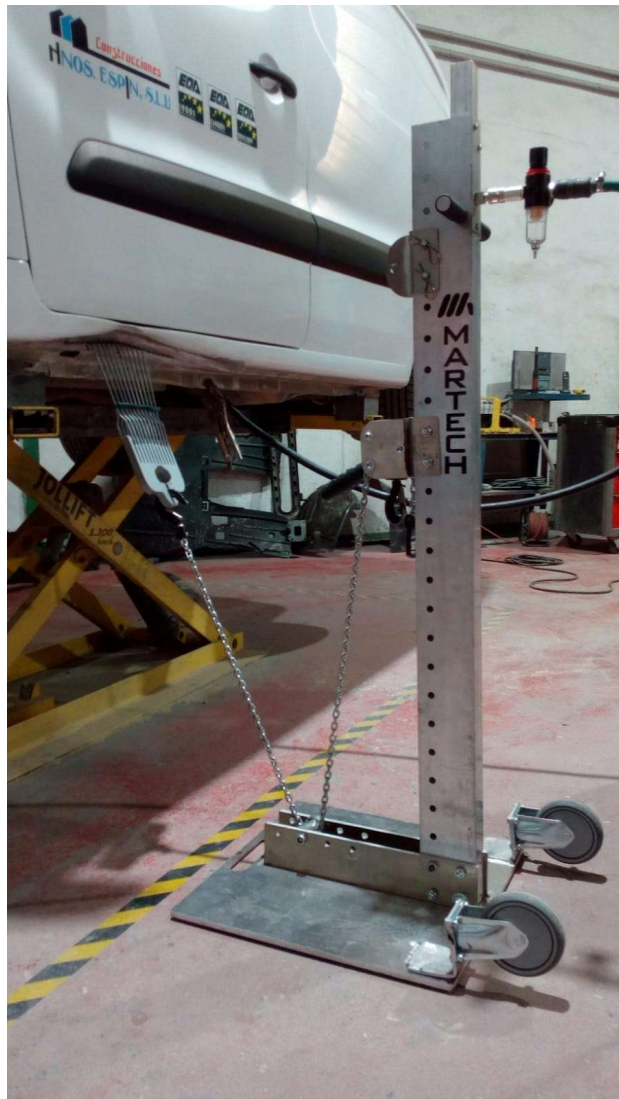
BODY SHOPS (MIN AND MAX HEIGHT)



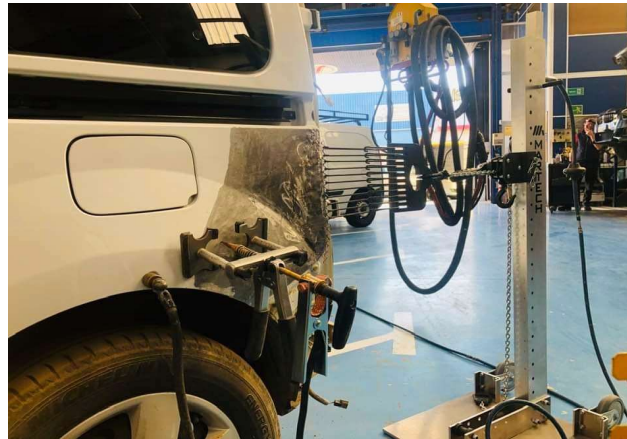
BODY SHOPS (CHAIN)



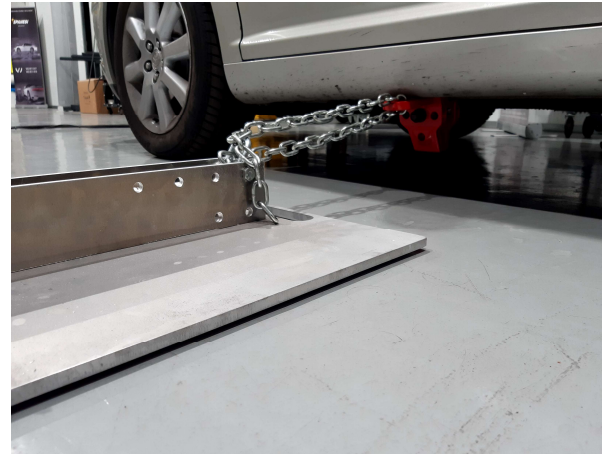
BODY SHOPS (CHAIN)



BODY SHOPS (INDUSTRIAL VEHICLES)



BODY SHOPS (COUNTERSHOT)



MEDIA

infotaller

REPARACIÓN CONDICIONADOS CHAPA Y PINTURA ELECTROMECÁNICA MECÁNICOS VEHÍCULO INDUSTRIAL

CONSEJOS Talleres Inspeci Normas y Certificados Aperturas Asesoría Técnica Remolques Asesoría de 15 Talleres

CHAPA Y PINTURA

Fast Puller, la ele de tiro patentada por Martech Corporation

Equipo indicado para reparaciones expresas de carrocería sin necesidad de espera de puestos libres de bancada

3M Science, Applied to Life™

Más información sobre Pistola de pulverización de alto rendimiento 3M™

Descargue el documento técnico interactivo gratuitamente

SABER MÁS

Martech Corporation presenta Fast Puller. Un novedoso equipo para la reparación de carrocerías. Se trata de una ele de tiro que permite, gracias a su fijación al suelo por medio de vacío, realizar reparaciones sin necesidad de buscar apoyos ni tallar así posibles bajos o estríbos.

Su sistema patentado por Martech Corporation ofrece así la posibilidad de hacer reparaciones expresas evitando esperar puestos de bancada libres u otros puestos, ya que su gran movilidad y ligereza, con estructura completamente en aluminio, permiten un fácil desplazamiento por todas las áreas del taller.

Las principales ventajas del Fast Puller se resumen en:

- Evitar mover vehículos de elevadores y puestos de trabajo.
- No esperar a puestos libres (reparaciones en cualquier parte del taller).
- Evitar daños potenciales por una mala colocación de los apoyos en el vehículo.
- Trabajos seguros evitando daños y lesiones.
- Utilización en vehículos sin estríbos.
- Reparaciones rápidas = menos vehículos de corteja.

LO MÁS / CHAPA Y PINTURA

1 Aseta, a nueve aseguradoras: "Es necesario actualizar el precio/hora de la mano de obra"

2 Particularidades de los acabados tricas de Mazda

3 Reynasa distribuirá Silkens en la Comunidad de Madrid

4 Axalta lanza el primer proceso de mezcla de color totalmente automatizado

5 La rentabilidad del taller de carrocería está en los detalles

Fast Puller

Martech Corporation

MARTECH CAR

FAST PULLER

360° PULLER SISTEM WITHOUT SUPPORTS

What is it? : chain traction system with a force of 250 kg which is fixed to the floor by means of a vacuum system that fixes the L or stretcher.

Who?: Its base is sealed by means of a rubber that adheres to the floor and withstands up to 2.250 kg and a working pressure of 4 bar.

Patent No. (EPO) 22382091.

Why?: thanks to its mobility, lightness, small size and stability, it allows 360° repairs without the need for repairs 360° without the need for supports.

Who is it for?: it is ideal for express repairs that require quick repairs on all types of panels: wings, doors, running boards, gates, etc... In this way, we reduce repair times and the time required for the transfer of courtesy vehicles.

WWW.MARTECHCORPORATION.COM

Handy Tool Puller System

SP706339 FAST PULLER

The pull base with vacuum system is the essential complement for dent removal damages. The pulling force of 250 Kg controlled by a ratchet system, offers the necessary pressure for each repair. The base is fixed to the ground creating a pneumatic depression with the floor, allowing full mobility throughout the Body Shop. Its structure made of aluminum makes it light and easy to transport.

Dimensions 500 x 500 x 1.340 mm

Weight 15,5 kg

Material Aluminum

Force power 250 Kg

Easy transport.

You can see a demonstration at: **YouTube**

OPTIONS AND ACESORIES

SP706329 Vacuum base countershot

SP706365 Vacuum rubber Fast Puller

SP706336 Multiple Hook

SP706340 Electropuller Adapter

SP740001 Electropuller

SP740102 Multipad

www.martechcorporation.com



Parque empresarial Campollano C/c nº50

02007 Albacete (Spain)

(+34) 967 520 002

www.martechcorporation.com

info@martechcorporation.com