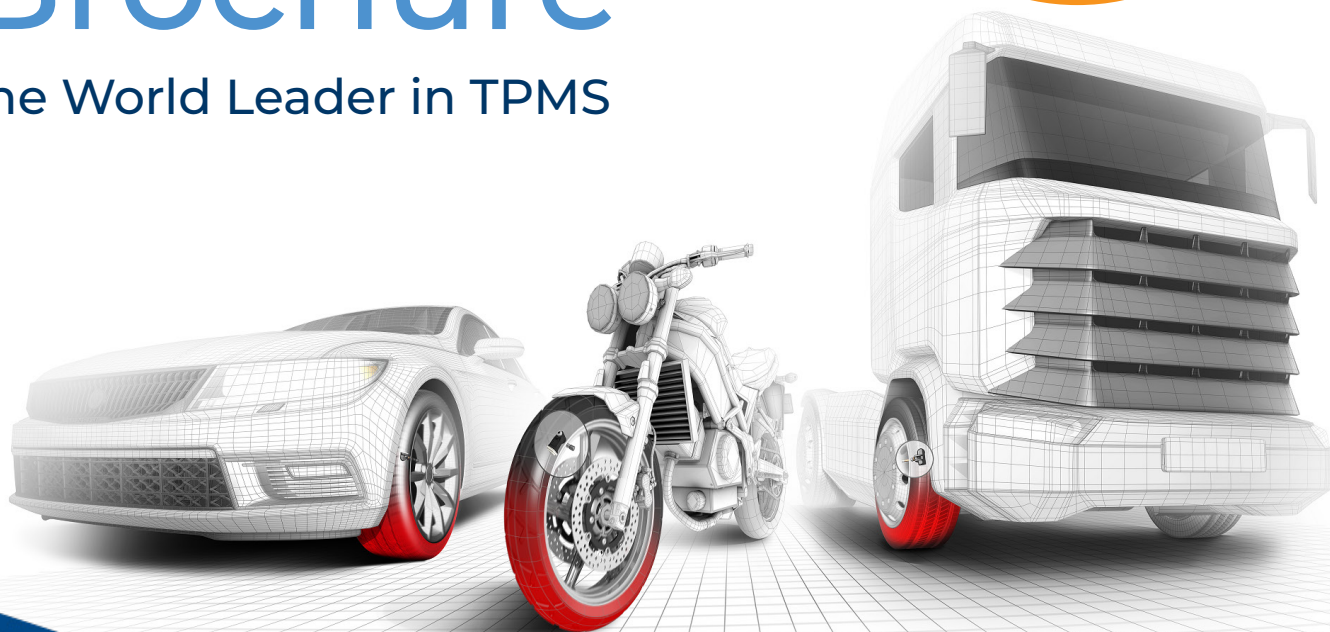




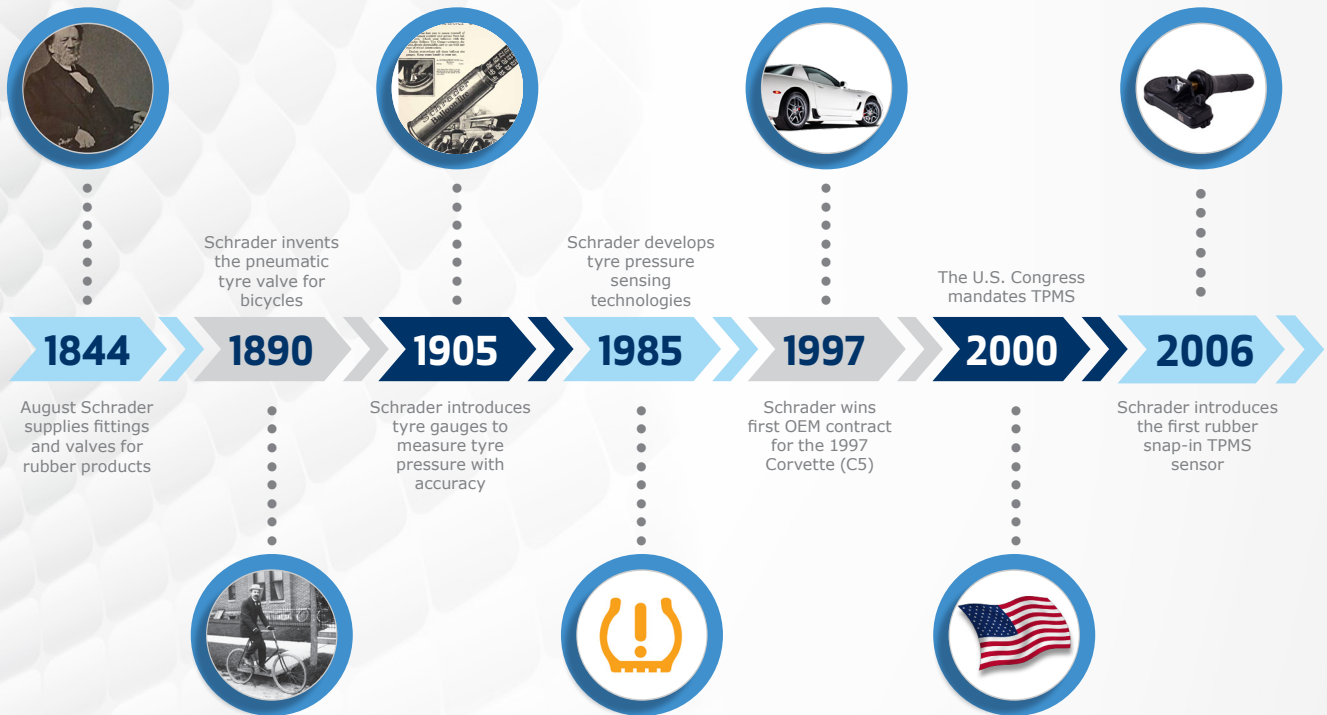
# Product Brochure

The World Leader in TPMS



# About Schrader **Innovation Driven Since 1844**

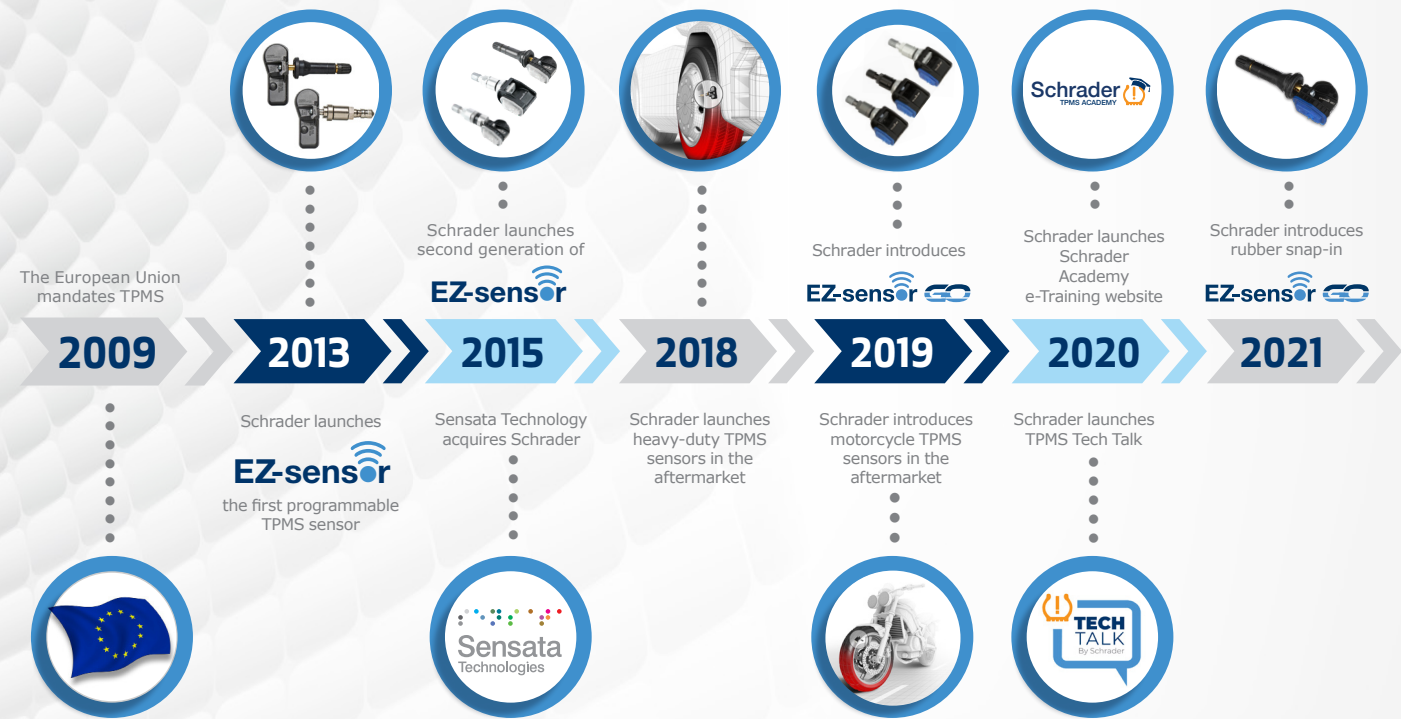
For over 178 years, Schrader has been the leading global manufacturer of valves and sensing solutions for automotive and industrial applications, delivering solutions that protect and perform. Schrader is widely known for the invention of the standard pneumatic tyre valve, the same valve used on most motor vehicles in the world. Today, Schrader is the world leader in Tyre Pressure Monitoring Systems (TPMS). Schrader's direct TPMS technology can be found in around 50% of global OEM passenger and light commercial vehicles.



Schrader brought its reputation of quality and innovation to the automotive aftermarket with the launch of the market's first programmable EZ-sensor®. The EZ-sensor® family of products are developed to match OE engineering and quality standards, supporting the latest generation of auto-location technologies.

EZ-sensor® GO is the latest sensor generation in the EZ-sensor® family of products and comes in snap-in rubber valve with fixed angle stem and clamp-in aluminium valve in 3 different valve colours: silver, black, and titan grey. The sensors offer 99% vehicle coverage of the European car park.

Schrader's EZ-sensor® family of products is the first TPMS sensor in the world to be certified in accordance with the guidelines of TÜV SÜD Product Service GmbH and hence, offers customers the highest level of quality.



1985-2022  
37 Years of TPMS Innovation

# Why Schrader?



## OE Manufacturer

Over  
**350**  
engineers  
dedicated to TPMS

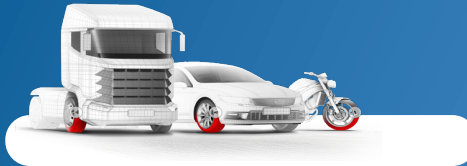
Failure rate of only  
**3**  
parts per million



Certified **QUALITY**

## Global Market Leader

**COMPLETE TPMS** portfolio



**99%**  
vehicle coverage

**50%**  
OE market share

## TPMS Partner of Choice

**CERTIFIED** team



Technical, Training  
and Marketing  
**SUPPORT**



**EXCLUSIVE PARTNERSHIPS**  
with leading tool manufacturers



TPMS Service Has Never  
Been so **EaZy** to **GO**

EZ-sensor® GO is programmable  
for 99% of all vehicle makes,  
models and years and even comes  
pre-programmed for selected  
brands\*.

## Benefits:

Up to



Available with  
**Rubber Snap-in**  
and 0° - 40° Variable Angle  
**Clamp-in Valves**

**99%**  
Car Parc Coverage

**Programmable**  
with All Independent  
TPMS Tools

**36 Months**  
or 45,000 km  
Warranty

Aluminium Valve in  
**3 Colours**

**Snap-in  
Rubber Valve  
with Fixed Angle**  
PN 1210-GO1



**Clamp-in  
Variable Angle  
Silver Valve**  
PN 2200-GO1



**Clamp-in  
Variable Angle  
Titan Grey Valve**  
PN 2200T-GO1



**Clamp-in  
Variable Angle  
Black Valve**  
PN 2200B-GO1



\* For a full list of pre-programmed vehicles, visit [www.SchraderTPMS.com](http://www.SchraderTPMS.com)



# Service Kits

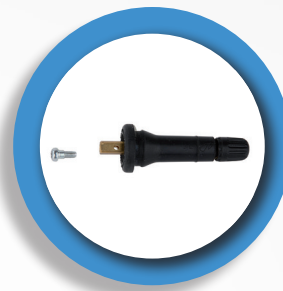
Service kit components should be replaced at every tyre change using a genuine OEM validated TPMS service kit. All components in the kits are intended for one-time use only.

## Service kits for rubber valves consist of the following components:

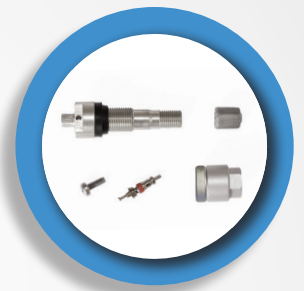
- Rubber-coated brass valve stem
- Brass valve core
- Plastic sealing cap
- T10 TORX screw

## Service kits for metal valves may consist of the following components:

- Aluminium valve stem
- Nickel-plated brass valve core
- Plastic sealing cap
- Rubber grommet
- T10 TORX screw
- Aluminium hex nut (including captive washer)



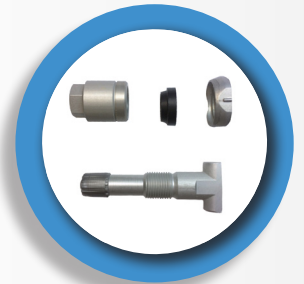
**Service Kit for  
Snap-in Valves**  
PN 5033



**Service Kit for  
Fixed Angle  
Metal Valves**  
PN 5061



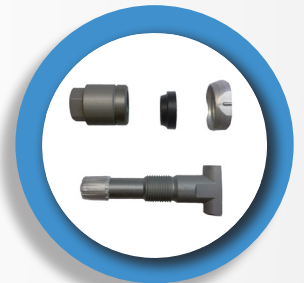
**Service Kit for  
Fixed Angle Metal  
Valves (Black)**  
PN 5061B



**Service Kit for  
Variable Angle  
Metal Valves**  
PN 5076



**Service Kit for  
Variable Angle  
Metal Valves (Black)**  
PN 5076B



**Service Kit for  
Variable Angle  
Metal Valves  
(Titan Grey)**  
PN 5076T

# EZ-sensor® Programming Tools

## Leading TPMS Tool Compatibility

The EZ-sensor® family of products is supported by the majority of the leading TPMS programming tools in Europe. Before using your programming tool, please download the latest software release, to ensure access to full vehicle coverage.



ST-1



TECH 450



S46



S41



EZ-sensor® PAD



TPMS PAD



TECH 300



TECH 350



TECH 400



TECH 450



TECH 500



TECH 600



TECH 700

# EZ-sensor Programming Tools



VT55



VT36



VT37



VT46



VT56



VT57



TPS



TPS2



AXONE S TPS



TPMS5



TPMS4



TPMS3

## Private Label Tools



TPMS PRO



TPMS GO



B-TP1000



B-TP1000



# EZ-sensor Tool Bundles



Tool bundles with EZ-sensor® GO  
(PN 2200-GO1 or PN 1210-GO1) and ST-1 TPMS  
programming tool powered by Schrader

Tool features:

- Programs all Schrader sensors
- Reads all TPMS sensors
- Includes OBDII quick connect cable
- Enables tread depth gauge measurement
- Offers unique and user-friendly software
- Offers customer/job management feature
- Includes **5-year** software update license



Tool bundles with EZ-sensor® GO  
PN 2200-GO1 and TECH 450 TPMS  
programming tool powered by Bartec

Tool features:

- Programs all Schrader sensors
- Reads all TPMS sensors
- Includes OBDII module and docking station for wireless charging
- Comes with a 2.8" color display and user-friendly icon-based menu
- Includes a **3-year** free software update licence



# OE Replacement TPMS Sensors

Schrader is the largest OE TPMS supplier, equipping over 50% of vehicles globally. Schrader's global OEM presence guarantees OE quality and performance standards for our genuine OE replacement sensors.

Schrader offers an extensive OE replacement sensor portfolio in the aftermarket, that guarantees:

- Quick and easy TPMS sensor replacement
- OE fit, form and function
- Industry-leading vehicle coverage
- No programming required



Following part numbers  
3108B, 3150B, 3151B, 3173B,  
3174B, 3149B, 3176B are now  
available with black valve!



# Heavy-Duty TPMS

## Bringing OE Heavy-Duty TPMS Expertise to the Aftermarket

The heavy-duty valve-mounted OE replacement sensors\* are available for sale with the following part numbers: **3700 for Daimler trucks and 3702 for DAF trucks.** Both sensors effectively measure tyre pressure, temperature, motion and can perform the full advanced auto location function. In addition, Schrader's heavy-duty TPMS sensors can provide unique and innovative tyre safety alerts, depending on the truck platform. The sensors perform to the exact requirements set by the Original Equipment Manufacturers.

### Truck TPMS Benefits:

- Increases fleet and road safety
- Reduces fuel consumption
- Reduces tyre service-related costs
- Reduces CO<sub>2</sub> emissions
- Improves tyre-life and performance

\* The heavy-duty sensors are sold without the valve. Please make sure to buy an applicable service kit for the installation.

Compatible Service Kits:  
PN 5700, PN 5701, PN 5702,  
PN 5703, PN 5704, PN5705,  
PN 5706, PN 5707





# Motorcycle TPMS

## OE-Quality TPMS Designed for Motorcycles

The valve-mounted sensors are available for sales with the following part numbers:

**3141M for BMW and 3142M for KTM**

**motorcycles.** The sensors cover all BMW and KTM motorcycle models equipped with a TPM system from the manufacturer. The sensors are sold without a valve stem. The valve stem can be purchased separately as part of the designated service kit.

## Motorcycle TPMS Benefits:

- OE quality TPMS specifically designed for motorcycles
- Real-time tyre pressure and temperature monitoring
- Improved riding experience, increased handling and braking capabilities
- Increased tyre life, safety and performance



Compatible Service Kits:  
PN 5077, PN 5078, PN 5080,  
PN 5081, PN 5082, PN 5083



Schrader Academy is the training division of Schrader TPMS Solutions launched in 2016. Currently, the following trainings are offered: TPMS e-Training Course, TPMS Seminars and TPMS Training for Experts.



## TPMS Training for Experts

An intensive full day training consisting of theoretical and practical modules, that are developed to suit your training needs.

Schrader's TIA-certified Trainers developed this training for TPMS service professionals based on actual workshop cases and prepare you for servicing TPMS!



## TPMS Seminars

2-hour seminars targeted to professional mechanics working with TPMS on a daily basis.

Currently, we offer the following workshops:

- Motorcycle TPMS
- Heavy-Duty TPMS
- TPMS Sales



## TPMS e-Training Course

TPMS e-Training is free of charge and covers all basic topics related to TPMS. After successful completion of the training, participants receive a digital certificate. Also, the TPMS e-Training Course is SCORM compatible.



**Subscribe to Schrader's TPMS Tech Talk, the industry's first TPMS training community**

**Additional information about our training offers can be found at**  
**[www.TPMSAcademy.com](http://www.TPMSAcademy.com)**





**Schrader International GmbH**  
Gadastraße 23A  
85232 Bergkirchen, Germany

[SchraderEMEA@sensata.com](mailto:SchraderEMEA@sensata.com) | 00800-5555-8767 toll-free | [www.SchraderTPMS.com](http://www.SchraderTPMS.com)

Schrader is a brand of   
Technologies