

# FAST PULLER



CHAIN PULL SYSTEM  
FOR BODY SHOP REPAIRS



# FAST PULLER

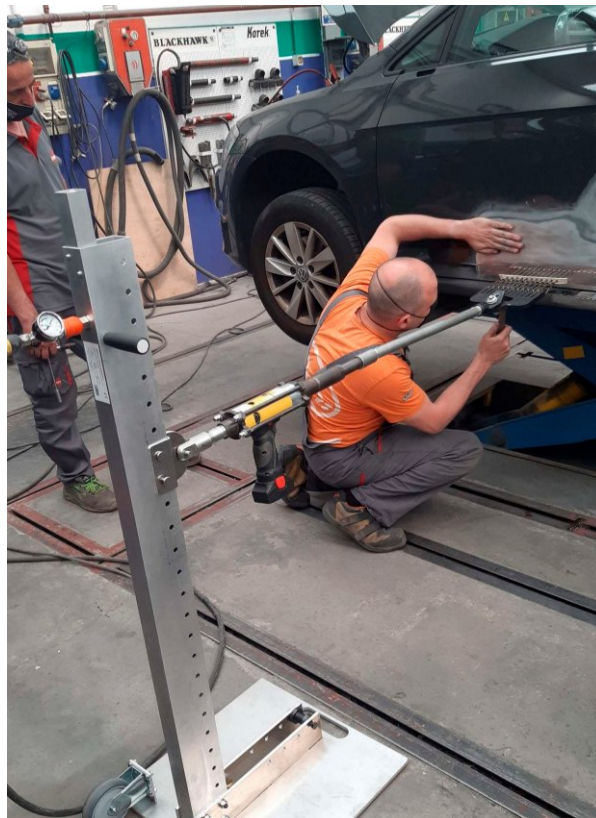
## WHAT IS IT?

A chain pull system for body shop repairs that thanks to its pneumatic vacuum system anchors to the ground without the need for fixings.



## HOW DOES THAT WORK?

Under the support base there is a special seal rubber that adheres to any type of floor allowing tractions up to 2,500 kg and an operating pressure from 4 bar up.



## WHY BUY IT?

To carry out 360° repairs without the need for supports, anchors and contrasts.

## STRENGTHS?

Absolute stability of the base making it a highly effective tool in the smallest operation space. Extreme lightness and small size. Finest minimal pulling regulations.

## FOR WHOM?

It is the ideal solution for spot repair interventions for bodybuilders who need to carry out rapid interventions on all types of paneling from the car sill to the uprights, from the doors to the wheel arches, etc. In short to all those who want to reduce repair times and thus avoid the delivery of courtesy vehicles.

