



An ISO 9001-2015 Certified Company

ZENITH INDUSTRIES

INSTRUMENTS
SPEEDOMETERS
TACHOMETERS
GAUGES





Company Profile:

Zenith Industries is one of the world's foremost manufacturer, supplier & exporter of engine Glow Plugs, Electronics/Mechanical Dashboard Instruments and Auto Electrical Parts. We have dedicated R & D team for Electronic Instruments development and design. Our products meet or exceeds all automotive standards. We are constantly improving and adding new products on regular basis. Established in 1993, the entire business operations are led by Mr. Pritam Singh under his superior and expert guidance. Having a strong presence in the markets of entire Europe, USA, Australia, New Zealand, Russia, Middle East, East India, South Africa and Indian Sub-continent. Zenith has transformed the lives of people through its wide assortment of Glow Plugs and Auto Components. Besides manufacturing engine Glow Plugs, we have 46 more other automobile products under our brand name :ZENITH". The glorious journey of two decades , since its inception, is enough to describe the success story of the organization.

One of the most widely admired company and led by truly professional, Zenith has successfully expanded its business across the globe. The successful voyage of business expansion tells a lot about the organization. Within a very short span of time, Zenith has become the expert in manufacturing and supplying diesel engine glow plugs, Electronics/Mechanical Dashboard Instruments and Auto Electrical Parts. Believing – or even just hoping – that we can deliver something different or something of highest quality have been the mantra for Zenith Industries.

We are thriving to improve the quality of products at every level by complying the latest quality standards existing in the market. We are recognized as the pioneer and trustworthy name in the global market with quality engine glow plugs and auto components. With an aim to focus on international market we had already target several countries with quality products.

Oftentimes, you might heard customers asking could there be a more perfect product? After all, the whole point of manufacturing quality product is not what is being manufactured, but it should serve the purpose of customers. That's where we are strong as a manufacturing unit!

Infrastructure :

The state-of-the art infrastructure of Zenith Industries continuously inspires the organization to manufacture quality products that meets the international standards. We have been supplying high end and efficient engine glow plugs and automobile components from last two decades in the both national and international markets. This couldn't be possible without an efficient supply chain and we have the most efficient logistics department to supply our products in nooks and corners of the globe. Manufacturing companies with a competent logistics department always have an upper hand as it maximizes the feasibility of their product among masses.

In the arena of infrastructure development, Zenith has proved its strength with Roorkee manufacturing unit in compliance with the advanced industry standards. There are two catches to the infrastructure development of a manufacturing organization. The first is that producing goods that are exceptionally high in quality and apparently meet all the quality standards made by global bodies.

Here at Zenith, you would find a tremendous campus that enables us to go beyond the excellence. It's true in all senses that without a vibrant infrastructure a company can't grow to its full extent. We understand and impart the continuous changes in the manufacturing industry so that our products remain on the top. We take care of all environment aspects while manufacturing our products that keeps us maintain greenery in the surroundings.

A team of highly dedicated and experienced professionals is another key factor that enable us to offer quality assured products to our customers. Furthermore, our logistics staff rigorously work round the clock to ensure timely delivery of the products to the end users. We are not only concerned about the infrastructure developments, in fact our approach is continuously stay update with the robust Information Technology (IT) system. There is always a need to potentially update the infrastructure and that's what define Zenith Industries as leader in the market.



ELECTRONIC INSTRUMENTS

RPM METER, GAUGES, CLOCKS, HOUR METERS



Part No.: ZHE-119R



Part No.: ZHE-119W



Part No.: ZHE-119RB



Part No.: ZHE-120



Part No.: ZHE-121



Part No.: ZHE-122



Part No.: ZHE-123



Part No.: ZHE-124



ZHMS-1712



VALMET 705 TECHOMETER
ZHE-103



Instrument Cluster for Zetor Tractor
5711 5745 6711 6745
ZHT-1657



VOLVO RPM METER
ZHE-102



MF DUAL GAUGE
ZHE-105G



MF ELECTRONIC RPM
ZHE-105R



MERCEDES RPM METER
ZHE-101



ZHEH-9004



ZHEH 9001



ZHEH 9003



ZHE-126



ZHE-127



ZHER-1110WPC



ZHER-1103



ZHER-1113WPCPB



ZHE -114



ZHE-115



ZHE-116



ZHE-117



Two Wheelers Speedometer & RPM



PART NO. ZHMS-1701



80mm BMW Speedometer R60
R69S R75-5, PART NO. ZHMS-1702



Vision Series Speedometer 0-220 MP
100MM Dia Electrical
PART NO. ZHMS-1705



VINTAGE BMW MOTORCYCLE SPEEDO
180 KPH R100 R80 R81 R80GS ,RATIO W-747
DIA-100MM PART NO. ZHMS-1706



80mm(0-80) Speedometer- For Monza
PART NO. ZHMS-1707



Puch monza tachometer - 8,000 rpm
PART NO. ZHMS-1708



60 mm(0-100) For M50R,S,GP,SG,C,MCI
PART NO. ZHMS-1709



60mm(0-12) 12000 RPM, M50
Racing, jet ,X50-4 PART NO. ZHMS-1710,



ZHMS-1741



48MM Speedometer- Vespa 50- 80 km/h
PART NO. ZHMS-1731



48mm (0-60) KTM Pony, Hobby
For puch MS, Vs, MV, DS, Maxi ktm hobby,
Pony 1 - PART NO. ZHMS-1715



Black Puch Speedometer- Maxi Magnum
Moped 48mm (0-30)
PART NO. ZHMS-1716



Puch-speedometer 60mm
PART NO. ZHMS-1718



ZHMS-1742



0-80km/h speedometer with
white background-60MM Dia
PART NO. ZHMS-1719



PART NO. ZH



Zundapp Speedometer 80mm
PART NO. ZHMS-1723



BMW Speedometer 80mm(0-150km/h)
PART NO. ZHMS-1703



Puch-speedometer 48mm
PART NO. ZHMS-1720



60mm (0-60,0-80,0-120km/h universal
PART NO. ZHMS-1728



Speedometer-Vespa 50 Special
PART NO. ZHMS-1729



ZHMS-1743



ZHMS-1744



Vespa Piaggio speedometer
PART NO. ZHMS-1732



Vespa speedometer
PART NO. ZHMS-1739



Vespa speedometer
PART NO. ZHMS-1740



Replica Enfield Black0-80MPH
PART NO. ZHMS-1734



Tachometer(0-100km) -MC50, R50 ,
KTM Ponny, Comet, PART NO. ZHMS-1711



ZHMS-1745



ZHMS-1746



ZHMS-1747



ZHMS-1748



ZHMS-1749



ZHMS-1750



ZHMS-1751



ZHMS-1752



BM Volvo 350
PART NO. ZHT-1628



BM Volvo 400-430
PART NO. ZHT-1656



IMT MODEL-539
PART NO. ZHT-1630



IMT HOUR METER, 577
part no. 577.09.220
PART NO. ZHT-1631



IMT MODEL-542-549
PART NO. ZHT-1632



IMT MODEL 560
PART NO. ZHT 1634



IMT CLUSTER 560/ 577 SMALL
PART NO. ZHT-1635



CLUSTER
PART NO. ZHT-1636



IMT CLUSTER 560/ 577
PART NO. ZHT-1633



ZHT-1658
Deutz, D-series,
D25.1 - Ø 80 mm



ZHT-1659
Güldner, Diverse
Ø 115 mm



ZHT-1660
Porsche diesel,
various- Ø 115 mm



ZHT-1661
Deutz
Ø 115 mm



ZHT-1662
Eicher
Ø 115 mm



ZHT-1663
Deutz D2505, D3005,
D2506, D3006
Ø 115 mm



ZHT-1664
Deutz, D-series,
D40 - D50 - Ø 80 mm



ZHT-1665
Deutz, Diverse
Ø 115 mm



ZHT-1666
Deutz
Ø 115 mm



Water Temperature Gauge(EL)

Electrical Temperature Gauge

Casing	52mm, 60mm, 75mm 2-1/16", 2-5/8" and 3"
Range	40-120°C, 50-150°C and 80-200°C/ 100-250°F, 100-280°F, and 140-320°F
Sweep Angle	70° , 80° and 90° span
Bezel	Chrome plated / Black Painted
Resistance	240-33(Low Match), 240-33(High Match), 0-30, 78- 10, 67-10 ohms and more.
Input Signal	1. Temperature Sender
Operating Voltage	6V/12V/24V
Illumination	12V/24V(Optional)



**Temperature Gauges
David Brown(E)**

PART NO. ZHW-1134



**Temperature
Case/IH Water**

PART NO. ZHW 1136

Water Temperature Gauges(Mech)

TECHNICAL SPECIFICATIONS

Mechanical Water Temperature Gauge

Casing	52mm(2-1/16"), 60mm(2-5/8")
Range	40-120°C, 50-150°C and 80-200°C/ 100-250°F, 100-280°F, and 140-320°F
Capillary Tube	Upto 10 meters / 400"
Scale	90° and 270° span
Bezel	Chrome plated / Black Painted
End Fittment	M14 x 1.5, M16x1.5, M18x1.5, 1/2"BSP, 1/2"14NPTF, 1/2"UNF, and 5/8"18 UNF
Illumination	12V/24V(Optional)



**Temperature Gauge
Valmet Tractor**

PART NO. ZHW-1148



CATERPILLAR,

PART NO. ZHW-1126



**High temp gauge
Universal,**

PART NO. ZHW-1124

Oil Pressure Gauges

Mechanical Pressure Gauge

<u>Casing</u>	52mm(2-1/16"), 60mm(2-5/8")
Range	40-120°C, 50-150°C and 80-200°C/ 100-250°F, 100-280°F, and 140-320°F
<u>Capillary Tube</u>	Upto 10 meters / 400"
Scale	90° and 270° span
Bezel	<u>Chrome plated</u> / Black Painted
End Fittment	M14 x 1.5, M16x1.5, M18x1.5, 1/2"BSP, 1/2"14NPTF, 1/2"UNF, and 5/8"18 UNF
Illumination	12V/24V(Optional)



**IHC Farmall
Oil Pressure Gauges
PART NO. ZHO-1202**

Electrical Pressure Gauge

<u>Casing</u>	52mm, 60mm, 75mm 2-1/16", 2-5/8" and 3"
Range	upto 27kg/cm2 / 400 psi
<u>Measures</u>	Oil/ <u>Air/Fuel/Water</u> /Trans. Oil / Turbo Boost/ Manifold/Turbocharger
Bezel	<u>Chrome plated</u> / Black Painted
<u>Resistance</u>	240-33, 0-30, 78-10, 67-10 <u>ohms</u> etc.
Input Signal	1. Pressure <u>Sender</u> 2. <u>Data Bus</u> Compatible Gauges Very soon
Operating <u>Voltage</u>	6V/12V/24V
Illumination	12V/24V(Optional)



**CATERPILLER
OIL PRESSURE GAUGE
PART NO. ZHO-1227**

Ampere Meter

Ammeters

Casing	41mm,52mm, 60mm 1-5/8", 2-1/16", 2-5/8"
Range	10/20/30/50/60/80/100 Amps
Bezel	Chrome plated / Black Painted
Earthing	Negative or Insulated
Input Signal	Dynamo
Illumination	6V/12V/24V(Optional)



**IHC Ampere Meter,
PART NO. ZHA-1302**



**DAVID BROWN AMMETER
PART NO. ZHA-1305**



**Massey Ferguson ammeter
PART NO. ZHA-1309**



FUEL GAUGE

Fuel Level Gauges

<u>Casing</u>	52mm, 60mm, 75mm 2-1/16", 2-5/8" and 3"
Range	E-1/2-F, 0-1/2-1
Sweep Angle	70°, 80° and 90°span
Bezel	Chrome plated / Black Painted
<u>Resistance</u>	240-33, 0-30, 78-10, 67-10 ohms etc.
Input Signal	1. Float Arm Fuel Sender 2. Tube Type Fuel Sender 3. Data Bus Compatible Gauges Very Soon
Operating <u>Voltage</u>	6V/12V/24V
Illumination	12V/24V(Optional)



Universal Fuel Gauge
PART NO. ZHF 1409



**Fuel Gauge for Massey
Ferguson Tractor**
PART NO. ZHF-1402



**David Brown Tractor
Fuel Gauge**
PART NO. ZHF-1404

Voltmeters

<u>Casing</u>	52mm, 60mm, 75mm 2-1/16", 2-5/8" and 3"
Range	0-6 Volt/ 6-20/8-16/16-32/24-40 Volts
Bezel	Chrome plated / Black Painted
Input Signal	1. Battery 2. Data Bus Compatible Gauges Very soon
Operating Voltage	6V/12V/24V
Illumination	12V/24V(Optional)



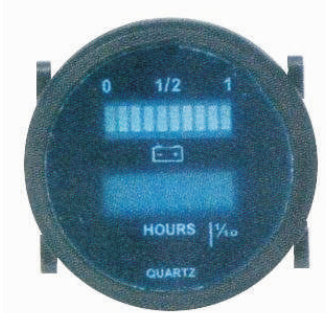
PART NO. ZHV-1504



PART NO. ZHV-1508



PART NO. ZHV-1507



PART NO. ZHV-1502



TRACTOR TACHOMETER /HOUR METER

Mechanical Hour- Cum-RPM Meter / Tachometer/
Tractormeter

Casing	60mm, 80mm, 85mm, 100mm, 110mm, 125mm, 140mm 3-1/8", 3-3/8", 4", 5"
Range	0-14000 RPM
Sweep Angle	270° max
Ratio	As per requirement
Bezel	Chrome plated / Black Painted
End Fittment	As per requirement
Illumination	12V/24V(Optional)
Input Signal	Mechanical Cable rotation through 1. Gearbox 2. Angle Drive
Hourmeter	0-9999.9 / Also available with Totalizer

Mechanical Speedometer

Casing	60mm, 80mm, 85mm, 100mm, 110mm, 125mm, 140mm 3-1/8", 3-3/8", 4", 5"
Range	upto 0-300km/h or 0-200mph
Sweep Angle	270° max
Ratio	As per requirement
Bezel	Chrome plated / Black Painted
End Fittment	As per requirement
Illumination	12V/24V(Optional)
Input Signal	Mechanical Cable rotation through 1. Gearbox 2. Hub Drive
Odometer	9999, 99999.9 & 999999.9 Kms/Miles





TECHOMETER & GAUGES

S NO.	IMAGE	ZENITH REF#	OEM REF#	DESCRIPTION	APPLICATION	SPECIFICATION
1		ZHW-1141	C3NN18287A C3NN18187A, FAD10883A, 89831449	Temperature Gauge	Ford Tractors Jubilee Ford Industrial	Black Bezel, Length: 34", Fits 2" Diameter Hole
2		ZHW-1140	89352927	Temperature Gauge	Zetor Tractors	Black Bezel
3		ZHW-1139	83050927	Temperature Gauge	Zetor Tractors	Fits Zetor Tractors 8011, 8045, 10245, 12011
4		ZHW-1139-A	83355915	Temperature Gauge	Zetor Tractors	Fits Zetor Tractors
5		ZHW-1138	6011-5607	Temperature Gauge	Zetor Tractors	Fits Zetor Tractors



6		ZHW-1137	AL24526 TX12362 187719M92 1877719M93	Temperature Gauge	Allis Chalmers Tractor John Deere Combines Long Tractors Massey Ferguson	12 Volt Fits 2" Diameter Hole
7		ZHW-1136	K921148 3127959R3 3127959R4	Temperature Gauge	David Brown Tractors International Tractors	Fits David Brown Tractors
8		ZHW-1135	70213675, 213675	Temperature Gauge	Allis Chalmers Tractors	White Face 3/8" NPT Stem Diameter: .373" Brass Stem Length: 2.048" Overall Length: 4"
9		ZHW-1128	303485587 881396M91, 899455M91, 180727M91, 1078125M91, 1850512M94, 181512M1 10A21284, 10A2229, 15A9741, 10A21284 100679A	Temperature Gauge	Allis Chalmers Tractors Massey Ferguson Massey Ferguson Industrial Minneapolis Moline Tractors Oliver Tractors Super	60" Capillary Tube 5/6" UNF Connector 2" Diameter
10		ZHW-1127	353868R91, 53690R2, 369849R91, 393476R91, 393481R91	Temperature Gauge	International Tractors	Lead Length: 6' Fits International Tractors C, Super C
11		ZHW-1127-A	353868R91, 53690R2, 369849R91, 393476R91, 393481R91	Temperature Gauge	International Tractors	Lead Length: 8' Fits International Tractors C, Super C



12		ZHW-1127-B	353868R91, 53690R2, 369849R91, 393476R91, 393481R91	Temperature Gauge	International Tractors	Lead Length: 4' Fits International Tractors C, Super C
13		ZHW-1127-C	67135D	Temperature Gauge	International Tractors	Black Face Metal Base Glass Lens IH Logo on Face Lead Length: 16"
14		ZHW-1118	A30088, 06161AB, 09991AB, 010416AB, 189309A1	Temperature Gauge	Case Tractors	Lead length: 84" Metal Base Glass Lens Case Name on Face 5/8-18 UF End with 1/2" NPT Pipe Bushing For 2" Diameter Hose
15		ZHW-1118-A	VT2265 A30327, 189309A1	Temperature Gauge	Case Tractors	Lead Length: 5' Metal Base Glass Lens Chrome Bezel Case Name On Face Includes 5/8" - 18 UF End w/ 1/2" NPT Pipe Bushing For 2" Diameter Hole
16		ZHW-1117	70229870 70231378, 70231997, 70235724, 235724, 231378, 229870, 228334, 226966	Temperature Gauge	Allis Chalmers Tractors	Dash Mounted Lead Length: 70" Fits 2" Diameter Hole
17		ZHW-1116	10A2229 10A2794, 30- 3485587	Temperature Gauge	Minneapolis Moline Tractors	Black Bezel Capillary Length: 72"



18		ZHW-1116-A	10A2229 10A2794, 30-3485587	Temperature Gauge	Minneapolis Moline Tractors	Stainless Steel Bezel, Capillary Length: 72"
19		ZHW-1132	957E10883	Temperature Gauge	Ford Tractors Dexta Super Dexta	Fits Ford Tractors Dexta, Super Dexta
20		ZHW-1114	AA1986R	Temperature Gauge	John Deere Tractors	Black Bezel Black Face Lead Length: 3'
21		ZHW-1114-A	AR490R, AT13849T, AR20783R, AM2444T, AA7263R, AA6295R	Temperature Gauge	John Deere Tractors	Black Bezel Black Face Lead Length: 6'
22		ZHW-1112	AA883R AA3538R	Temperature Gauge	John Deere Tractors	Black Bezel White Face Lead Length: 3'
23		ZHW-1112-A	AM610T AM1609T, AA1342R	Temperature Gauge	John Deere Tractors	Black Bezel White Face Lead Length: 6'
24		ZHW-1111	1E528 1K528E, 608745A, 7A528B, A528B	Temperature Gauge	Oliver Tractors	Yellow Face Glass Lens Oliver Name on Face Includes 72" Capillary Tube



25		ZHW-1110	63783D	Temperature Gauge	International Tractors	IHC Logo on Face Lead Length: 2'
26		ZHV-1506		Volt meter Gauge	Universal Applications	Fits 2" Diameter Hole 0-16 Volt
27		ZHV-1501	1672835M2	Volt meter Gauge	Massey Ferguson Tractors	Colored Dial Reads 6-20
28		ZHT-1626	101390A 101390AA, 156558A, 158259A	Temperature Gauge	Oliver Tractors	Fits Oliver Tractors 770, 880
29		ZHT-1625	898489M91, 898489M92	Tachometer Gauge	Massey Ferguson Tractors	Multi-Power
30		ZHT-1623	363829R91	Tachometer Gauge	International Utility Tractors	Fits International Utility Tractors 300, 350
31		ZHT-1623	364372R91, 364374R92	Tachometer Gauge	International Utility Tractors	Fits International Utility Tractors 300, 350



32		ZHT-1621		Tachometer Gauge	REPLACEMENT OF DEERE TACHOMETER 1010 RS, RC, OR, RU, UT	Fits John deere 1010 RS, RC, OR, RU, UT
33		ZHT-1619	364395R91	Tachometer Gauge	International Tractors	Fits International Tractors W400, W450, 400, 450
34		ZHT-1618-MPH	898465M92, 898465M91, 898467M91, 898467M92	Tachometer Gauge	Massey Ferguson Tractor	M P H Massey Ferguson 135 6 Speed ,Dual Clutch Engine: Perkins
35		ZHT-1622-MPH	898461M92, 898463M92	Tachometer Gauge	Massey Ferguson Tractor	M P H Massey Ferguson 135 6 Speed ,Single Clutch Engine: Perkins
36		ZHT-1616	AM3132T	Tachometer Gauge	John Deere Tractors	Fits 430 & 440 With 4-Speed Transmission
37		ZHT-1615	1860063M91	Tachometer Gauge	Massey Ferguson Tractors	Fits Massey Ferguson Tractors 165, 175, 178, 180
38		ZHT-1614	86520180, 8N17360A1	Tachometer Gauge	Ford Tractor	Ford Tractor 8N (s/n 245637-later)



39		ZHT-1613	957E17360A, 957E17360D	Tachometer Gauge	Ford Tractors	Fits Ford Tractors Dexta, Super Dexta
40		ZHT-1611	193966M91, 193967M91	Tachometer Gauge,	Massey Ferguson Tractors	Fits Massey Ferguson Tractors F40, T035, 50, 65
41		ZHT-1609	364393R91	Tachometer Gauge	IH/FARMALL ,International Tractors	Fits International Tractors W400, W450, 400, 450
42		ZHT-1608	E1ADDN17360A	Tachometer Gauge	Ford Tractors	Fits Ford Tractors Major, Power Major
43		ZHT-1607	1674637M91, 1875187M92, 1674637M92, 354120X1, 674637M91	Tachometer Gauge	Massey Ferguson Tractors	Fits Massey Ferguson Tractors 50E, 50EX, 240, 253, 260, 261, 270, 282, 283, 285, 290, 298, 375E, 390E
44		ZHT-1606	898485M92, 898485M91, 898487M92	Tachometer Gauge	Massey Ferguson Tractors	Fits Massey Ferguson Tractors 50 (s/n 875000-earlier) 165, 175, 178, 180
45		ZHT-1655	186969M91, 890421M92, 193890M91, 829222M92, 890222M92	Tachometer Gauge	Massey Ferguson Tractor	Fits Massey Ferguson Tractor 35 1500 RPM 540 PTO



45		ZHT-1603	AL30803, AL23837	Tachometer Gauge	John Deere Tractors	John Deere Tachometer 1030,1130, 1630,1830,2030,2130 100 mm dia Speed Ratio 1:2:57000
46		ZHT-1602	C3NN17360N	Tachometer Gauge,	Ford Tractors Jubilee	4 Speed White Face
47		ZHT-1601	K942227, K942232, K955273	Tachometer Gauge	David Brown Tractors	Fits David Brown Tractors 885, 990 (Q-Cab), 995 (Q- Cab), 996 (Q-Cab), 1210, 1212, 1410, 1412 (all Selectamatic)
48		ZHO-1228	362177R94, 393488R91	Oil Pressure Gauge	International Tractors, Windrowers , Combines, Forage Harvester	IH Logo on Face Dash Mounted 0-45 PSI
49		ZHO-1226	228719, 70228719, A19346, A30326, D22853, D26894 FAD9273A 3644664R92, 364665R92, 393488R91 506902M92, 0236651 761511M91	Oil Pressure Gauge - Chrome Bezel,	Allis Chalmers Tractors, Case Tractors ,Case Industrial, Cockshutt Tractors, Ford Tractors, International Tractors, International Combines, John Deere Tractors, Massey Ferguson Tractors , Massey Harris Tractors, Minneapolis Moline Tractors , White Tractor	Chrome Bezel Black Face Dash Mounted Fits 2" Diameter Hole 1/8" Male Pipe Threads 0 - 80 PSI
50		ZHO-1226-A	70228719 506902M92	Oil Pressure Gauge	Universal Applications Allis Chalmers Tractors Massey Ferguson Tractors	Chrome Bezel Fits 2" Diameter Hole 0-80 PSI Includes 12V Light and Lines



51		ZHO-1225	JT854, 10A7986, 30-3485471	Oil Pressure Gauge	Minneapolis Moline Tractors Big	Black Bezel Dash Mounted 0-50 PSI
52		ZHO-1224	JT854, 10A7986, 30-3485471	Oil Pressure Gauge	Minneapolis Moline Tractors Big	Black Bezel Dash Mounted 0-50 PSI
53		ZHO-1223	1HA344A, 7K344, 608744A, 30-3485471	Oil Pressure Gauge,	Oliver Tractors	Yellow Face Glass Lens Dash Mounted Oliver Name on Face 0-25 PSI
54		ZHO-1222	158584A 158584A	Oil Pressure Gauge	Oliver Tractors White Tractors	Dash Mounted 0-50 PSI
55		ZHO-1221	159565A, 30-3485471	Oil Pressure Gauge	Oliver Tractors	Dash Mounted 0-80 PSI
56		ZHO-1220	506902M92, 180100M92	Oil Pressure Gauge,	Massey Ferguson Tractors Massey Ferguson Combine Massey Ferguson Industrial Massey Harris Tractors	1/8" NPT Male Fitting
57		ZHO-1218	180100M92, 180100M91, 506902M92	Oil Pressure Gauge	Massey Ferguson Tractors Massey Harris	Chrome Bezel White Face 1/8" X 27 Inverted Flare



58		ZHO-1217	3381907M1, 1853097M91, 1458875M91, 1850337M96, 1850377M96, 1853097V91, 506902M92, 908428M1, 960265M1, 968903M1	Oil Pressure Gauge,	Massey Ferguson Tractors	Female Threads
59		ZHO-1219	FAD9273A 506902M92	Oil Pressure Gauge,	Ford Tractors Massey Ferguson Tractors Massey Ferguson Industrial	Black Bezel 0 - 40 PSI Red: 0-5 Green: 5-40
60		ZHO-1215	9N9273A	Oil Pressure Gauge	Ford Tractors	Black Bezel Dash Mounted 0-50 PSI
61		ZHO-1214	FAD9273A	Oil Pressure Gauge	Ford Tractors	Black Bezel Black Face Dash Mounted Fits 2" Diameter Hole 1/8" Male Pipe Threads 0 - 80 PSI
62		ZHO-1212	70207834, 207834	Oil Pressure Gauge	Allis Chalmers Tractors International Tractors John Deere Tractors	Chrome Bezel Black Face White Letters Screw In Type Engine/Governor Mounted 0-30 PSI
63		ZHO-1211	AB1549R	Oil Pressure Gauge	John Deere Tractors	White Face Metal Base Glass Lens Black Bezel Engine Mounted 0-25 PSI



64		ZHO-1211	AM737T, AB292R, AA1730R	Oil Pressure Gauge	John Deere Tractors	White Face Metal Base Glass Lens Black Bezel Engine Mounted 0-25 PSI
65		ZHO-1210	362039R93, 536962R1, 536962R2, 362036R91, 362177R94	Oil Pressure Gauge	International Tractors	OEM No. on Face Includes Studs 1/8" NPT male thread 0-75
66		ZHO-1209	AF2752R, AF2775R	Oil Pressure Gauge	John Deere Tractors	Black Bezel Black Face
67		ZHO-1206	70207834, 207834	Oil Pressure Gauge	Allis Chalmers Tractors	Chrome Bezel Allis Chalmers name on face Mounts in oil filter housing
68		ZHO-1206	70226967, 70232546, 70200197, 70206959	Oil Pressure Gauge	Allis Chalmers Tractors	Allis Chalmers Name on Face Dash/Bracket Mounted 1/8" NPT Thread
69		ZHO-1206	70228718, 70228719, 228719, 70232546	Oil Pressure Gauge,	Allis Chalmers Tractors	Chrome Bezel White Face Allis Chalmers Name on Face Dash Mounted 0-30 PSI Fits 2" Diameter Hole
70		ZHO-1203	41934DB	Oil Pressure Gauge	International Tractors	IH Logo on Face Zone Style Includes Studs 0-75 PSI



71		ZHO-1203	43987DB	Oil Pressure Gauge,	International Tractors	Chrome Bezel IH Logo on Face OEM No. on Face 1/8 NPT Male Thread Threads into Cylinder Block Zone Type 0-75 PSI
72		ZHO-1203	43987DB	Oil Pressure Gauge	International Tractors	Chrome Bezel IH Logo on Face OEM No. on Face 1/8 NPT Male Thread Threads into Cylinder Block Zone Type 0-75 PSI
73		ZHO-1201	A14245H, VT2249	Oil Pressure Gauge	Case Tractors	Case name on face 0-60
74		ZHF-1410	AL24294, AL18155	Fuel Gauge	John Deere Tractors John Deere Combines	Negative Ground Black Face
75		ZHF-1408	AL24294, AL24187 TX12365 1877717M92, 1877717M93	Fuel Gauge,	Allis Chalmers Tractor John Deere Tractors Long Tractors Massey Ferguson Tractors	
76		ZHF-1406	528424M91, 1074336M91, 1074335M91, 1074335V91, 1074336V91	Fuel Gauge,	Massey Ferguson Tractors Massey Ferguson Combine	Black Bezel 12 Volt Gauge Fits 2" Diameter Hole
77		ZHF-1415	AF2721R	Fuel Gauge,	John Deere Tractors	12 Volt Positive Ground Electric 0-30 OHMS



78		ZHF-1403	K262707, K917374, K921147, K962496 894844M1, 898418M1	Fuel Gauge,	David Brown Tractors Massey Ferguson Tractors	Chrome Bezel
79		ZHF-1401	310949 AA6566R, AF2721R, AF2720R, AF2739R	Fuel Gauge	Ford Tractors John Deere Tractors	12 Volt Negative Ground Black Bezel 14-122 OHM Range
80		ZHF-1401-6V	310948 AA6566R, AF2721R, AF2720R, AF2739R, AR20712R	Fuel Gauge	Ford Tractors John Deere Tractors	6 Volt Positive Ground Black Bezel 14-122 OHM Range
81		ZHA-1311	240987, 70240987, 254407, 70254407 FAD10850A 360053R91, 378424R91, 393334R1, 33334R1, 393334R91 AF2749R 515521M91	Amp Meter Gauge	Allis Chalmers Tractors Allis Chalmers Industrial Avery Tractors Case Tractors Case Industrial Cockshutt Tractors Ford Tractors Golden Jubilee International Tractors John Deere Tractors Massey Ferguson Tractors Massey Ferguson Industrial Massey Harris Tractors Colt, Mustang, Pacer, Pony Minneapolis Moline Tractors Oliver Tractors	Stainless Steel Bezel Fits 2" Diameter Hole 30-0-30
82		ZHA-1308	A0NN10670A	Amp Meter Gauge	Ford Tractors Jubilee	Black Bezel Terminal Type Fits 2" Diameter Hole Black Face 30 - 0 - 30
83		ZHA-1307	A0NN10670A	Amp Meter Gauge	Ford Tractors Jubilee	Chrome Bezel Terminal Type Fits 2" Diameter Hole Black Face 30 - 0 - 30



84		ZHA-1306	360053R91, 360053R92, 378424R91, 393334R91	Amp Meter Gauge	International Tractors	Chrome Bezel Metal Base Glass Lens Black Face White Letters IH Logo on Face 30-0-30 Reads D-O-C
85		ZHA-1304	1HA7353, HA7353, 1HA-7353, 720951A, 608747A	Amp Meter Gauge	Oliver Tractors	Yellow Face Glass Lens Chrome Bezel Oliver Name on Face 20-0-20
86		ZHA-1303	03601AB1, 03601AB, 1341333C1	Amp Meter Gauge	Case Tractors	Black Face White Letters 20-0-20 Case name on face
87		ZHA-1301	725-3023, 925-3141 354473RH, 354473R91	Amp Meter Gauge	Cub Cadet Outdoor Power Equipment International Tractors Cub	Black Face White Letters 20-0-20
88		ZHA-1317	BE455A, 30-3485560, 10A8171	Amp Meter Gauge	Minneapolis Moline Tractors	Black Bezel Restoration Quality 30-0-30
89		ZHA-1318	42383D	Amp Meter Gauge	International Farmall Tractors	Black Face Glass Lens Black Bezel 20-0-20



90		ZHA-1314	AF2749R, AM1864T	Amp Meter Gauge	John Deere Tractors	Black Face Metal Base Glass Lens Black Bezel 20-0-20
91		ZHA-1316	AM354T, AB2568R, AB1190R	Amp Meter Gauge	John Deere Tractors	White Face Glass Lens Black Bezel 20-0-20
92		ZHA-1315	158583A	Amp Meter Gauge,	Minneapolis Moline Tractor Oliver Tractors White Tractors	Chrome Bezel Reads - 0 +
93		ZHF-1414-B	533992R1, H142794	Fuel Gauge	International Tractors	Black Face 12 Volt Negative Ground
94		ZHF-1414		Fuel Gauge	International Tractors	12 Volt Negative Ground White Face
95		ZHF-1412	AF2739R, AF2173R	Fuel Gauge	John Deere Tractors	12 Volt Negative Ground
96		ZHF-1413	AR45436, AT375294	Fuel Gauge	John Deere Tractors John Deere Combines John Deere Industrial	12 Volt Negative Ground For 2" Diameter Hole 30-250 OHM



97		ZHF-1411	155558A	Fuel Gauge,	Minneapolis Moline Tractor Oliver Tractors White Tractors	12-Volt Negative Ground 0-146 OHMS
98		ZHOTC-1801	1546481C1, 534057R2	Instrument Gauge Cluster	International Tractors	Includes Oil Gauge, Temperature Gauge Capillary Length: 80"
99		ZHFTC-1802	1546480C1, 382733R93, 396380R91, 397939R92, 539293R91, 376854R93	Instrument Gauge Cluster	International Tractors	Includes Fuel Gauge, Temperature Gauge Capillary Length: 80"
100		ZHO-1231	70207834, 207834	Oil Pressure Gauge	Allis Chalmers Tractors	Black Bezel Allis Chalmers name on face Mounts in oil filter housing
101		ZHO-1232	31041DBH	Oil Pressure Gauge	International Tractors	0-15 PSI
102		ZHO-1234	31041DBH	Oil Pressure Gauge,	International Tractors	IHC Logo on Face Black Face 0-15 PSI
103		ZHO-1233	AM284T	Oil Pressure Gauge,	John Deere Tractors	Metal Base Glass Lens Black Bezel Engine Mounted Mechanical 0-30 PSI



104		ZHO-1235	159565A 30-3485471	Oil Pressure Gauge	Oliver Tractors	0-80 PSI
105		ZHT-1637	C3NN17360K	Tachometer Gauge	Ford Tractors	5 Speed Black Face
106		ZHT-1647	C3NN17365A, C3NN17360J	Tachometer Gauge	Ford Tractors	Tachometer Gauge
107		ZHT-1645	898469M91, 898471M92	Tachometer Gauge	Massey Ferguson Tractor	Multi-Power Engine: Perkins
108		ZHT-1639	383093R91, 383092R91, 375679R91	Tachometer Gauge	International Tractors	IH logo on face
109		ZHT-1641	70228818, 70229755, 70261728, 70261779, 70234095, 70277450, 70276770, 228818, 261779, 234095, 261728, 70242376, 229755	Tachometer Gauge	Allis Chalmers Tractors Allis Chalmers Industrial	White Face (Background) Allis Chalmers Logo on Face



110		ZHT-1651	70236655	Tachometer Gauge	Allis Chalmers Tractor	Allis Chalmers Tractor D19
111		ZHT-1650	70236777	Tachometer Gauge	Allis Chalmers Tractors Allis Chalmers Industrial	Allis Chalmers Tractors D15 Allis Chalmers Industrial I60, I600
112		ZHT-1649	70239730	Tachometer Gauge	Allis Chalmers Tractor	Allis Chalmers Tractor D21
113		ZHT-1652	70243569	Tachometer Gauge	Allis Chalmers Tractor	Camshaft Driven
114		ZHT-1653	70252409, 70255036	Tachometer Gauge	Allis Chalmers Tractors	Alternator Driven Must use with drive that has 12 & 45 teeth and alternator using 3" pulley for the RPMs to read correctly
115		ZHT-1648	3125106R92, 66455C1, 3121926R91	Tachometer Gauge,	International Tractors	Rotation: Clockwise
116		ZHT-1640	66748C1, 398095R91, 388589R91	Tachometer Gauge,	International Tractors	Will not fit original hole Must use the extra thick grommet



117		ZHT-1646	1674638M92, 1877718M92, 1699381M91, 1877718M93	Tachometer Gauge	Massey Ferguson Tractors	Needle Rotation: Counter Clockwise
118		ZHW-1144	AR46979	Temperature Gauge	John Deere Tractors John Deere Industrial	Transmission Oil Temperature
119		ZHW-1143	AR36383, R34263	Temperature Gauge	John Deere Tractors John Deere Industrial	Lead Length: 29"
120		ZHW-1145	AR45435, AR48640	Temperature Gauge	John Deere Tractors John Deere Combines	Lead Length: 26"
121		ZHW-1142	180727M92, 10879390M91	Temperature Gauge,	Massey Ferguson Tractors Massey Ferguson Industrial	Fits Massey Ferguson Industrial
122		ZHW-1147	155557A, 30-3031659	Temperature Gauge,	Minneapolis Moline Tractor Oliver Tractors White Tractors	Chrome Bezel Negative Ground 12 Volt
123		ZTH-1620	AL30805, AL19692, AL24776	Tachometer Gauge	JOHN DEERE TRACTOR	110 mm dia JOHN DEERE TACHOMETER Max RPM: 2500 Base RPM: 2100 Gear Ranges: 6 John Deere 2840 3030 3130





ZENITH INDUSTRIES

(AN ISO 9001-2015 CERTIFIED COMPANY)

Plot No 1100 & 1101, Industrial Estate, Salempur Rajputana, Roorkee (U.K.), INDIA

Tel.: +91-1332-269508, Cell : +91-9837176697, +91-9837571094

Fax : +91-1332-269508

E-mail: zenithindustries@rediffmail.com, zenithglowplug@gmail.com

Web: www.zenithglowplugs.com, www.glowplugsindia.com