

The Excellent Company  
Brand of Seoul



**KOENG**  
(주) 코엔지



Multi Cleaner  
**M-501 / M41E**

# BUBBLE TURBO

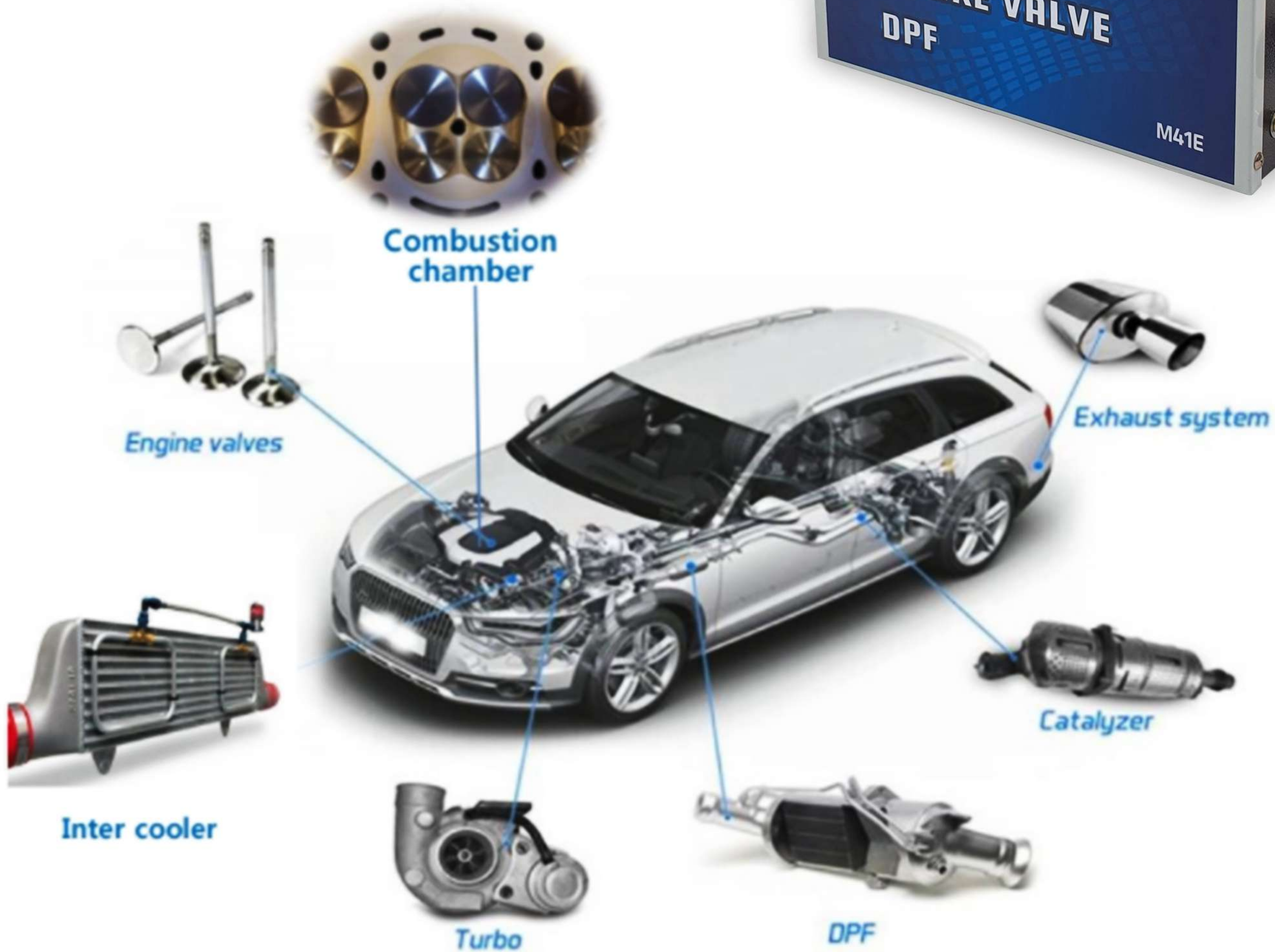
- 01 Turbocharge cleaning solution
- 02 Inter cooler cleaning solution
- 03 Intake valve & Throttle body cleaning solution
- 04 Combustion chamber cleaning solution
- 05 DPF (Diesel Particle Filter) cleaning solution





Multi Cleaner M-501 / M41E

# BUBBLE TURBO



## Features

- Multi equipment with 5 functions with one equipment
- Using a water-soluble detergent to provide consumers with visual performance for bubbles
- The repetitive operation of air and chemicals is adopted for the first time in the world, enabling more stable operation.
- You can experience more stable engine performance with the turbo intercooler cleaning equipment for the first time in Korea.
- Domestic Ssangyong Motor Service and Kia Service Offices are currently in use and 100% satisfaction is guaranteed.
- When cleaning with chemicals, there is little exhaust odor and there is no mismatch or trouble with the engine.





## Advantages of Multi Cleaning

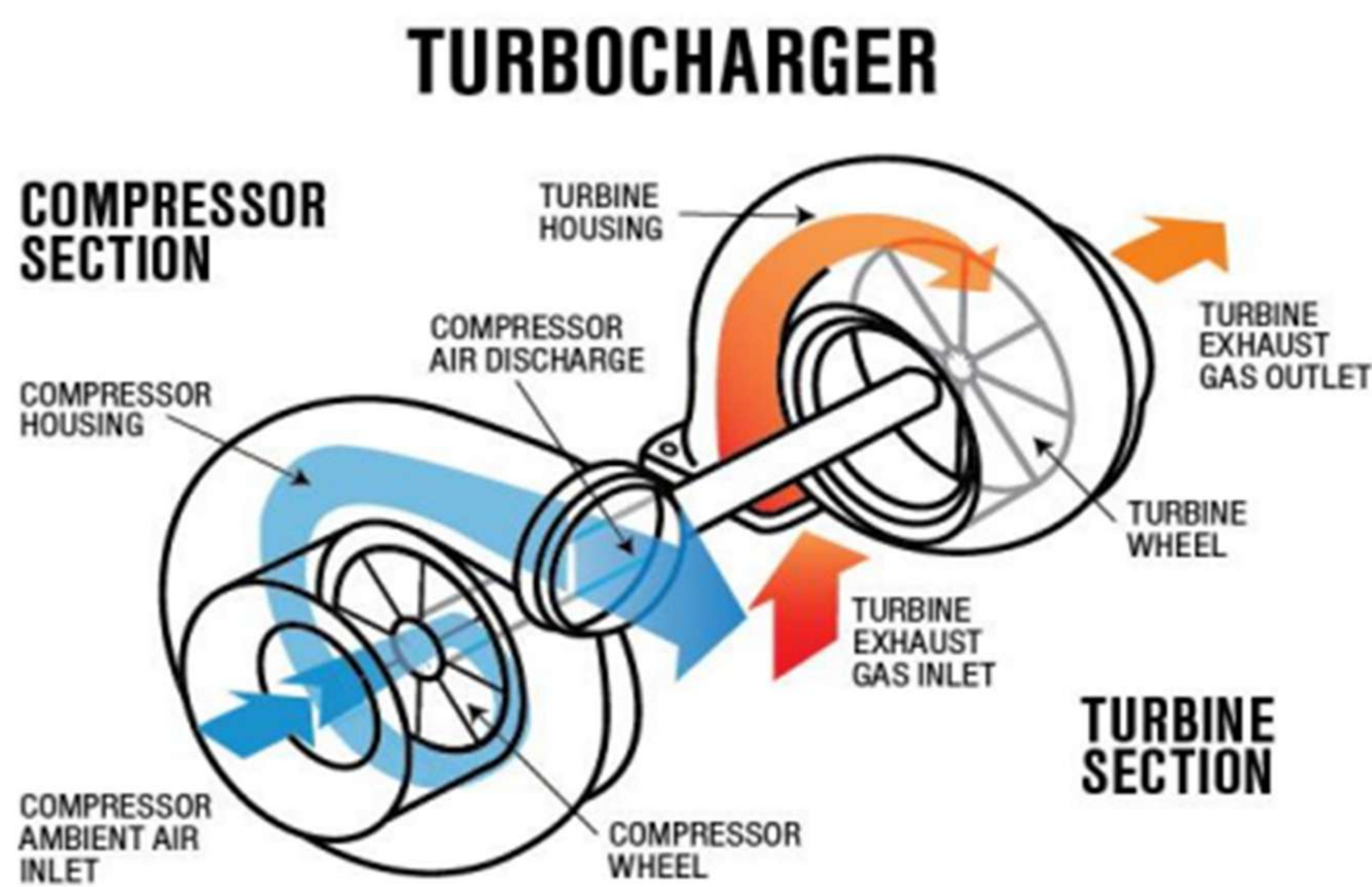
- Maximizing the response of engine efficiency after work.
- Satisfaction with the construction performance of consumers.
- Convenient construction of work.
- Separate work possible during the process of construction work
- Engine stability during work construction.
- Reducing the odor of exhaust fumes when working.
- Reduced smog of exhaust fumes when working.
  - 1. bottle for intake cleaning 70.000km
  - 2. bottles for 150.000km
  - 3. bottles for 230.000km
- Pass after construction if the exhaust smoke test fails due to a problem with the intake line.
- GYDBF 50 – 70% of the smoke reduction device (DPF)
- Improve customer satisfaction with simultaneous intake cleaning operation.
- Expansion of added value of maintenance shops

## Bubble turbo Multi Cleaner. M-501

- 1. Use : Equipment that combines essential cleaning functions for car management
- 2. Function: Multi cleaner (4 in 1)
  - cleaning the air intake line
  - \* Gasoline: cleaning of the throttle body, intake manifold, intake valve, and exhaust catalyst in the combustion chamber
  - \* Diesel: Turbo, intercooler, throttle body, intake manifold, intake valve, washing of DPF, etc. Combustion chamber cleaning
  - After removing the spark plug and injector, clean the inside of the cylinder, intake exhaust valve, cylinder head, etc.
  - DPF cleaning (cleaning of accumulated sediment in DPF, an exhaust reduction device for diesel vehicles)
- 3. Effect : The effect of a new car is expressed by expressing the function recovery of each device through washing of contaminated elements.
- 4. Order : 1 equipment, Chemical: Gasoline intake, Diesel intake, Combustion chamber, DPF



# TURBOCHARGER CLEANING

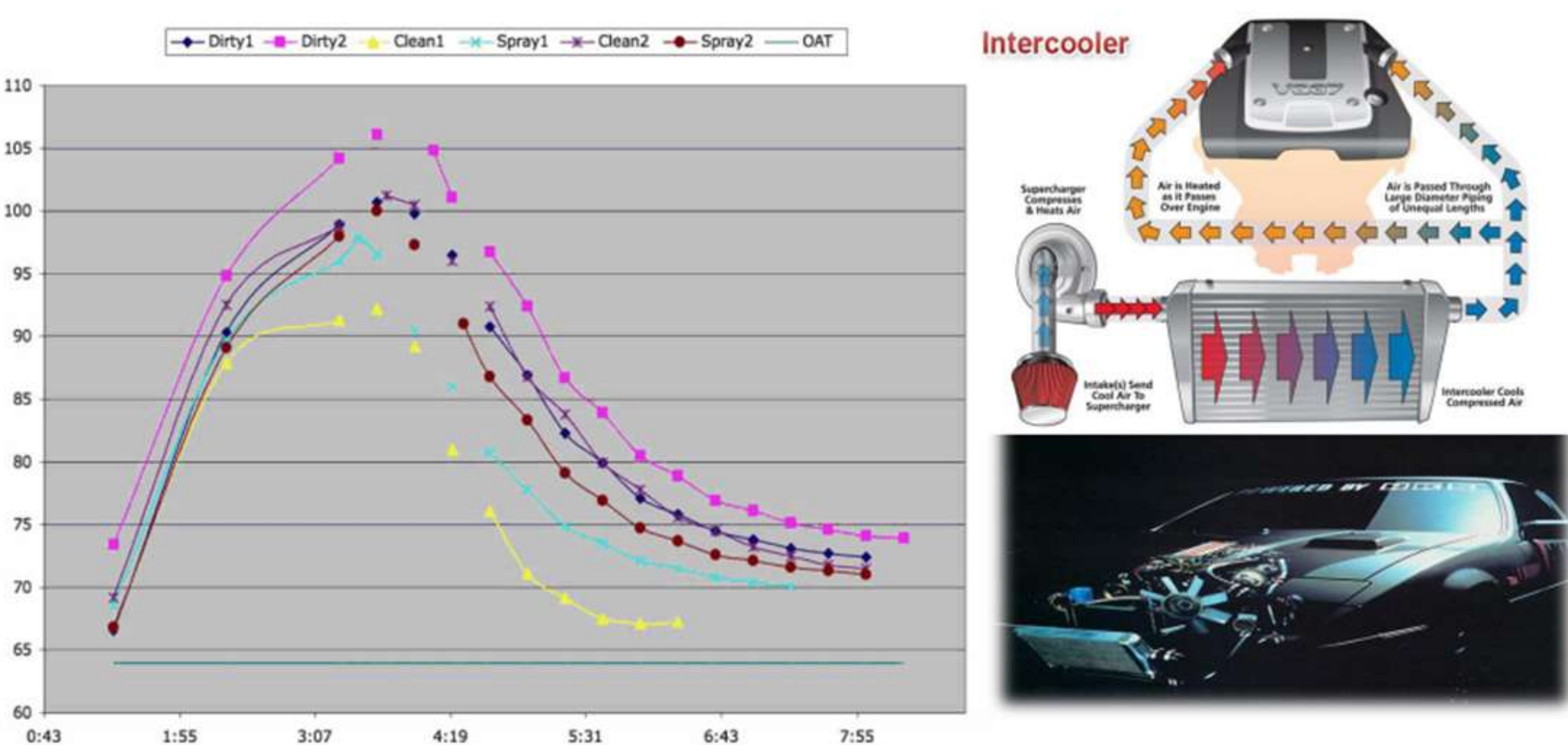


Turbochargers are the best technology to increase power in gasoline and diesel vehicles. These technologies are not without problems. One of them is maintenance and cleaning-carbon accumulates over time, threatening the torque of the turbo and bringing negative efficiencies to other post-burning components of the engine. This is the reason for the low power of the turbocharger. It is easy to understand by dividing it into two categories: “improvement of quality” and “post-treatment”. “Quality improvement”

purifies the exhaust gas discharged from the exhaust valve by combustion. In other words, it blocks turbo rotation from the root. “Post-treatment” means that the exhaust gases emitted from the engine by the catalytic converter are converted into clean substances, ie water and carbon dioxide. To purify the exhaust gas, cleaning is a good combination of two things, “improvement of quality” and “after treatment”.

## Intercooler cleaning

Intercooler cleaning is used to improve volumetric efficiency by increasing the intake air density. It is very effective to avoid knocking even by cooling the compressed and hot intake air with a charge cooler (inter cooler). Cooling with a charge cooler not only lowers the temperature, but also increases the density of the intake air, making it a stone. For example, if 0.7kg/cm<sup>3</sup> is supercharged, the output will be 1.7 times that of natural intake, but if the intake air temperature rises from 30°C to 100°C by supercharging, the density increases 0.8 times, so the output is only 1.7×0.8=1.36 times. The sediment inside the blast furnace intercooler is a part



that must be cleaned due to the rise of the compressed intake air temperature.

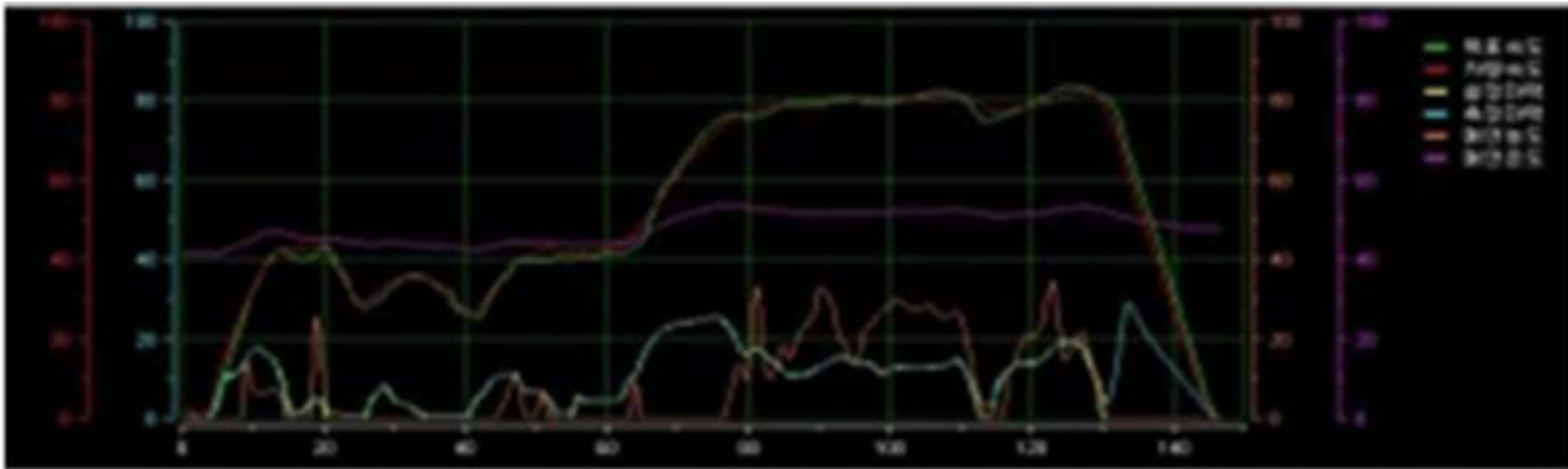


INTAKE & THROTTLE BODY CLEANING



The state-of-the-art electronic fuel injection system is the most advanced fuel injection system in vehicles today. However, from a maintenance perspective, cleaning for maintenance needs to be considered. The most common maintenance dimension is a simple intake port cleaning. . Such cleaning is a simple and good preventive maintenance, such as relieving fatigue of the intake tank, intake port, intake and exhaust valve piston rings.

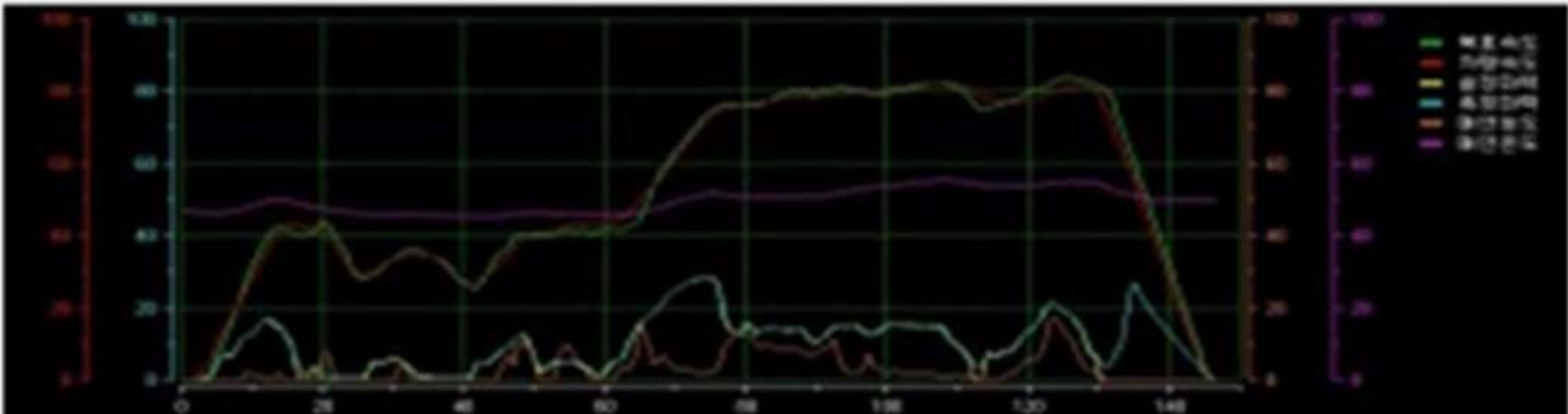
The effect of cleaning the intake on common rail diesel engine and exhaust gases



(a) Before cleaning the intake

정밀검사결과표(KD-147)						
입수번호 제 8023-20101127-0004-1 호			(위발류, 가스, 알콜사용 자동차용)			
자 동 차	1) 동 료 번 호	황우25마4607	2) 차대번호	KD6M0B1VP3U160274	3) 계량관리번호	*****
	4) 소유자성명 (상호)	*****	5) 차명(제작사)	트라EXTRACT EX	6) 차종(종도)	중형 승용차
	7) 연 식	2003	8) 연 도	영남	9) 누적주행거리	169,951 Km
	10) 최초등록일	2002-12-20	11) 정밀검사요구기간만료일			
12) 종합판결		부적합		13) 재검사사건 :		
14) 정밀검사요구기간 :		1회 부적합 차량입니다.				
15) 광능및기능검사		판결 : 적합		16) 배출가스검사		
				검 사 항 목	측정치	허용기준 판결
				후보하검사	%	%
	부하	대	1모드	32.3%	30.0%	부적합
			2모드	%	%	
			3모드	%	%	
		최대출력		PS	PS	
		연진회전수		rpm	%	
대기온도 : 6.20		대기압력 : 100.10				
자 차	17)길이	4,695 mm	20)발 식	D4EA	23)차량중량	1,895 kg
	18)너비	1,840 mm	21)배기량	1,991 cc	24)승용량	2,470 kg
	19)높이	1,705 mm	22)전력출력/ 회전수	115,4000	25)정 평	9 명
26)특기사항						

(b) After cleaning the intake



(a) after cleaning the intake

정밀검사결과표(KD-147)					
입수번호 제 8023-20101127-0004-2 호			(위발류, 가스, 알콜사용 자동차용)		
1) 동 료 번 호	황우25마4607	2) 차대번호	KD6M0B1VP3U160274	3) 계량관리번호	*****
4) 소유자성명 (상호)	*****	5) 차명(제작사)	트라EXTRACT EX	6) 차종(종도)	중형 승용차
7) 연 식	2003	8) 연 도	영남	9) 누적주행거리	169,951 Km
10) 최초등록일	2002-12-20		11) 정밀검사요구기간만료일		
12) 종합판결	적합		13) 재검사기간 :		
14) 정밀검사요구기간 :					
15) 광능및기능검사	판결 : 적합		16) 배출가스검사		
			검 사 항 목	측정치	허용기준
			후보하검사	%	%
부하	테	1모드	16.7%	30.0%	적합
		2모드	%	%	
		3모드	%	%	
검사			연		
			최대출력	PS	PS
			연진회전수	rpm	%
대기온도 : 7.20			대기압력 : 100.10		
자 17)길이	4,695 mm	20)발 식	D4EA	23)차량중량	1,895 kg
자 18)너비	1,840 mm	21)배기량	1,991 cc	24)승용량	2,470 kg
자 19)높이	1,705 mm	22)전력출력/회전수	115,4000	25)정 평	9 명
26)특기사항					

(b) After cleaning the intake

조선대학교 기계공학과 대학원, 2 서영대학교 자동차과 인용

TURBOCHARGER CLEANING

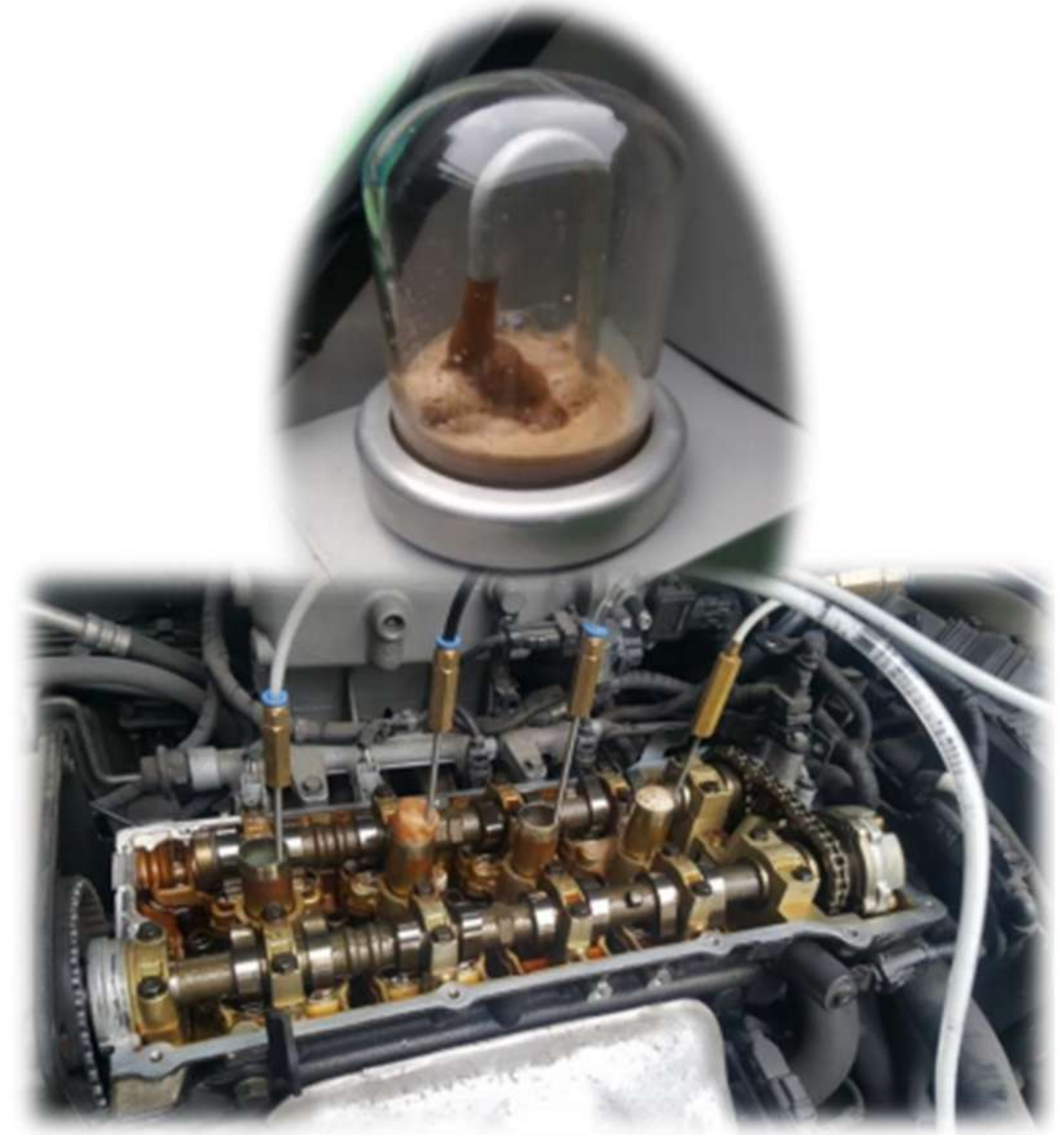
Carbon accumulating engines generate power by igniting a mixture of fuel and air in the combustion chamber. Fuel and air are heated through compression and then ignited with spark plugs for a controlled explosion. Carbon deposits on the top of the piston and in the cylinder head trap heat, creating hot spots that can cause the fuel to ignite prematurely. This uncontrolled ignition creates a higher pressure than

normal combustion and can cause knocking, whipping, and engine damage in extreme conditions. Parts Affected: Internal combustion engines, including piston tops, cylinder heads, and new gasoline direct injection engines require clean combustion. A small accumulation of carbon deposits in the combustion chamber has a significant impact on operational performance.

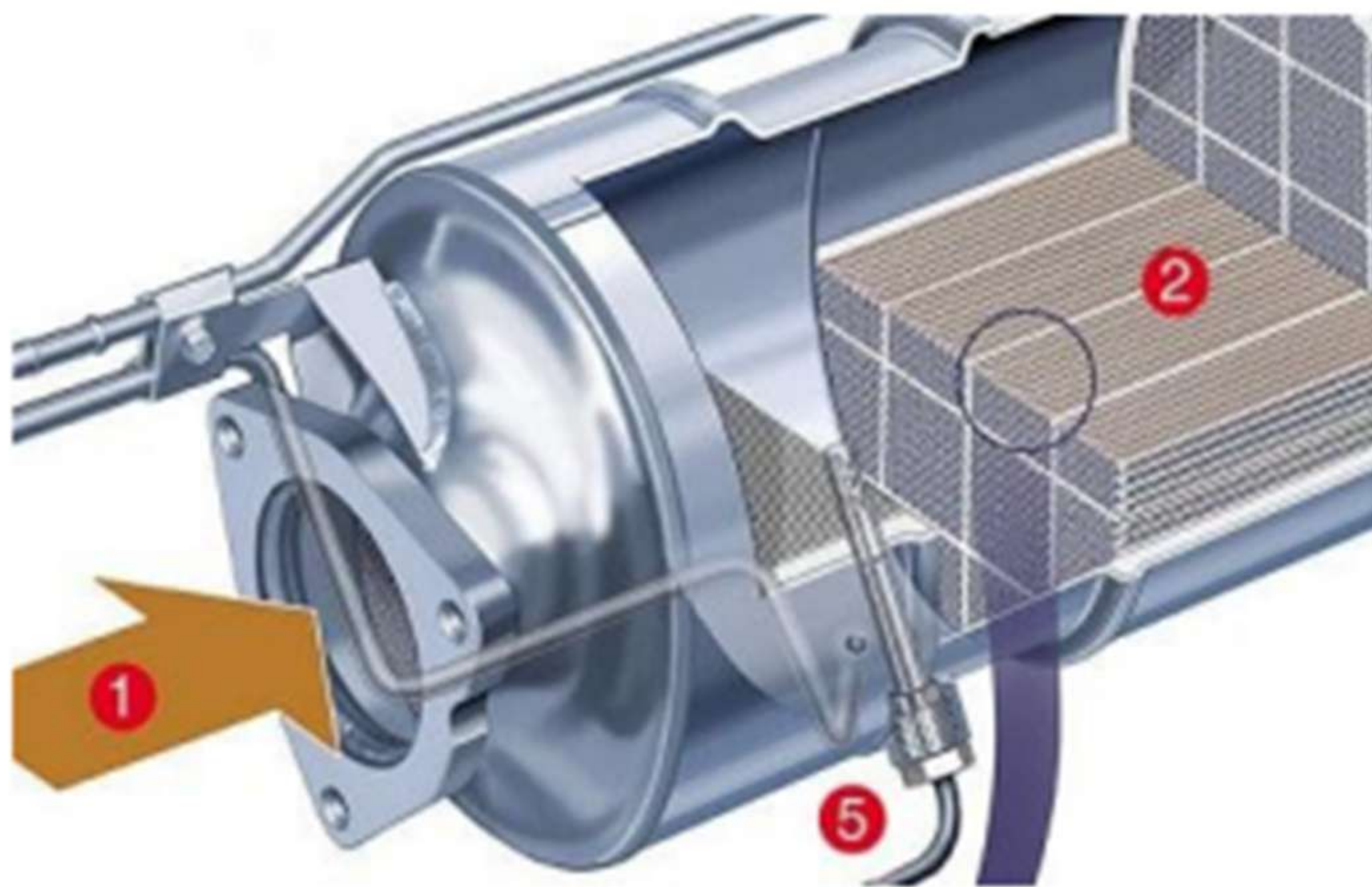


Combustion Chamber Cleaner is a product used to eliminate combustion. The chamber functions efficiently. Key Features

- Oxygen sensor and catalytic converter safety
- Restore power and fuel efficiency
- Reduce emissions
- Smooth idle.
- Purge carbon, gum, varnish and sludge of internal engine parts



## DIESEL PARTICLE FILTER CLEANING



Instead of replacing, clean the particulate filter! Question When the electronic light is on, does the vehicle no longer have power and a very high fuel consumption? Diesel particulate filters have a limited capacity to store particulates. Due to the small quantity of soot, the soot particles have to be burned during the regeneration of  $\text{CO}_2$  and ash. For other reasons, the regeneration process will not start, causing the DPF to become clogged with soot particles. Possible causes: defective or fully functioning injector squeegee or coked EGR valve fuel or other characteristics of biofuel Short-distance driving profile Solution: The first manufacturer to develop a particulate filter cleaning system, installing a clogging particulate filter Fast, simple and economical replacement in conditions. Can be cleaned to a near new condition New installation inexpensive Clean without disassembling particulate filters Non-flammable neutral ash and metal-free formulation Overloaded DPF: It is expensive. Parts replacement customers pay a lot of money. New diesel particulate filter. You will also have to stay in the workshops and rental cars for a long time. Cleaning instead of replacement Optimal customer service DPF will function again in the shortest possible time. DPF cleaning without expensive new installations Technical approvals from major car manufacturers Significant cost savings Precautions to keep customers mobile permanently More than 100,00 have already been successfully applied



# Specification



Model	M-501
Power	AC 200-250V / 50-60HZ
Adapter	International standard connectors
Operating way	2-3 bar Air compressor + Electric power
Tank capacity	3 liters for Diesel 0.6 liter for the others
Injection way	Spray nozzle
Cleaning pressure	Controllable
Timer	Timer : Digital
Mode of transport	Mobile
Dimensions	500 x 600 x 1000 (L X W x H) mm
Weight	40kg



Model	M41E
Power	AC 200-250V / 50-60HZ
Adapter	International standard connectors
Operating way	2-3 bar Air compressor + Electric power
Tank capacity	3 liters for Diesel 0.6 liter for the others
Injection way	Spray nozzle
Cleaning pressure	Controllable
Timer	Timer : Digital
Mode of transport	Mobile
Dimensions	400 x 500 x 400 (L X W x H) mm
Weight	7.5kg

# Chemicals(Additive)



**G1**  
For Gasoline intake  
500 ml, 300ml  
(15EA / Box)



**D1**  
For Diesel intake  
500 ml, 300ml  
(15EA / Box)



**C1**  
For Combustion chamber  
500 ml, 300ml  
(15EA / Box)



**DPF-F1**  
For DPF Clean  
1000 ml  
(12EA / Box)



# Fuel line cleaning system

KE-770

- + Diesel Injection Cleaning.
- + Petrol Injection Cleaning.
- + Air Intake & Throttle Body Cleaning.
- + DPF Cleaning.



## Features

- Effective cleaning of Fuel Injection systems, Air intake systems and DPF systems without the need for dismantling key components.
- Restoring lost performance and improving fuel efficiency by as much as 15%
- Designed to work on Gasoline and Diesel, Direct and Non-Direct injection engines, including common rail diesel.
- Ensures the effective and safe removal of contamination throughout the whole system using with KOENG cleaning solution.



KE-700D  
Diesel  
Injector Cleaner



KE-700G  
Gasoline  
Injector Cleaner



KE-730G  
Gasoline Intake  
System Cleaner



KE-730D  
Diesel Intake  
System Cleaner



KE-2000  
Engine Conditioner  
Foam



KE-740  
DPF Cleaner

## Technical Data

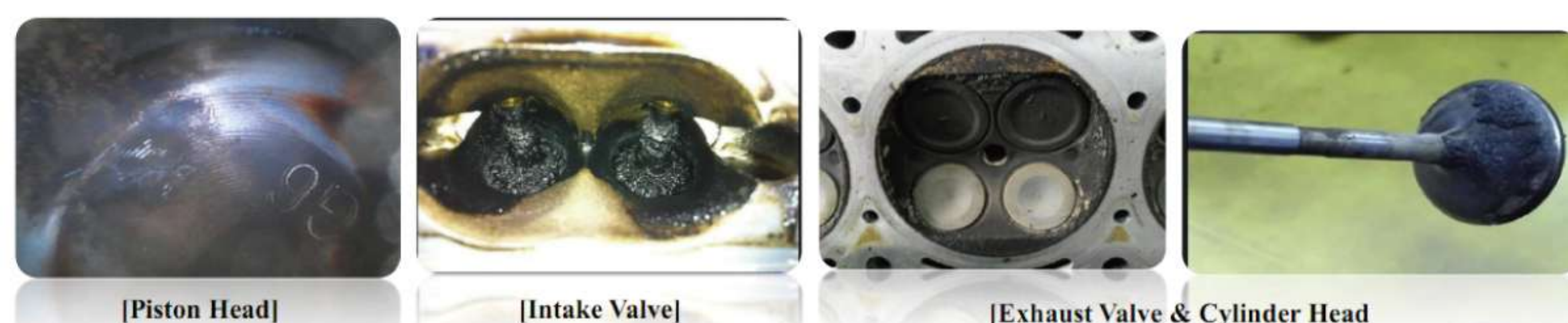
Specifications may vary for performance and quality

Model	KE-770	
PRODUCT	CRDI & Gasoline Injector Cleaner + AIR Intake System Cleaner, DPF Cleaner	
POWER	Diesel	12 volt Pump
	Gasoline	2.2 bar compressed Air
	Air intake	0.5 - 1.5 bar
TANK	Diesel	3 Liter
	Gasoline	0.6 Liter
	Air intake	0.6 Liter
HOSE LENGTH	Diesel	2.5 Meter x 2
	Gasoline	2.5 Meter
	Air intake	2.5 Meter
ADAPTER	Standard Adapter	
TOOL BOX	Installed on the top cover	
WEIGHT	38 kg	
DIMENSION	520 X 450 X 1050 mm	



# ENGINE CLEANING KIT

KGC-700



## Features

- ◆ Perfect clean for Piston head, Valve side and Intake valve

### Composition

- ◆ Carrying Case
- ◆ Kit ASS'Y with holder
- ◆ Brush (4 different types)
  - Synthesize Nylon & PP (2 composition)
- ◆ Private Endoscope & Air Ratchet
- ◆ Clean Liquid(100cc 5EA)
- ◆ Suction Kit with Release and Suction Hose

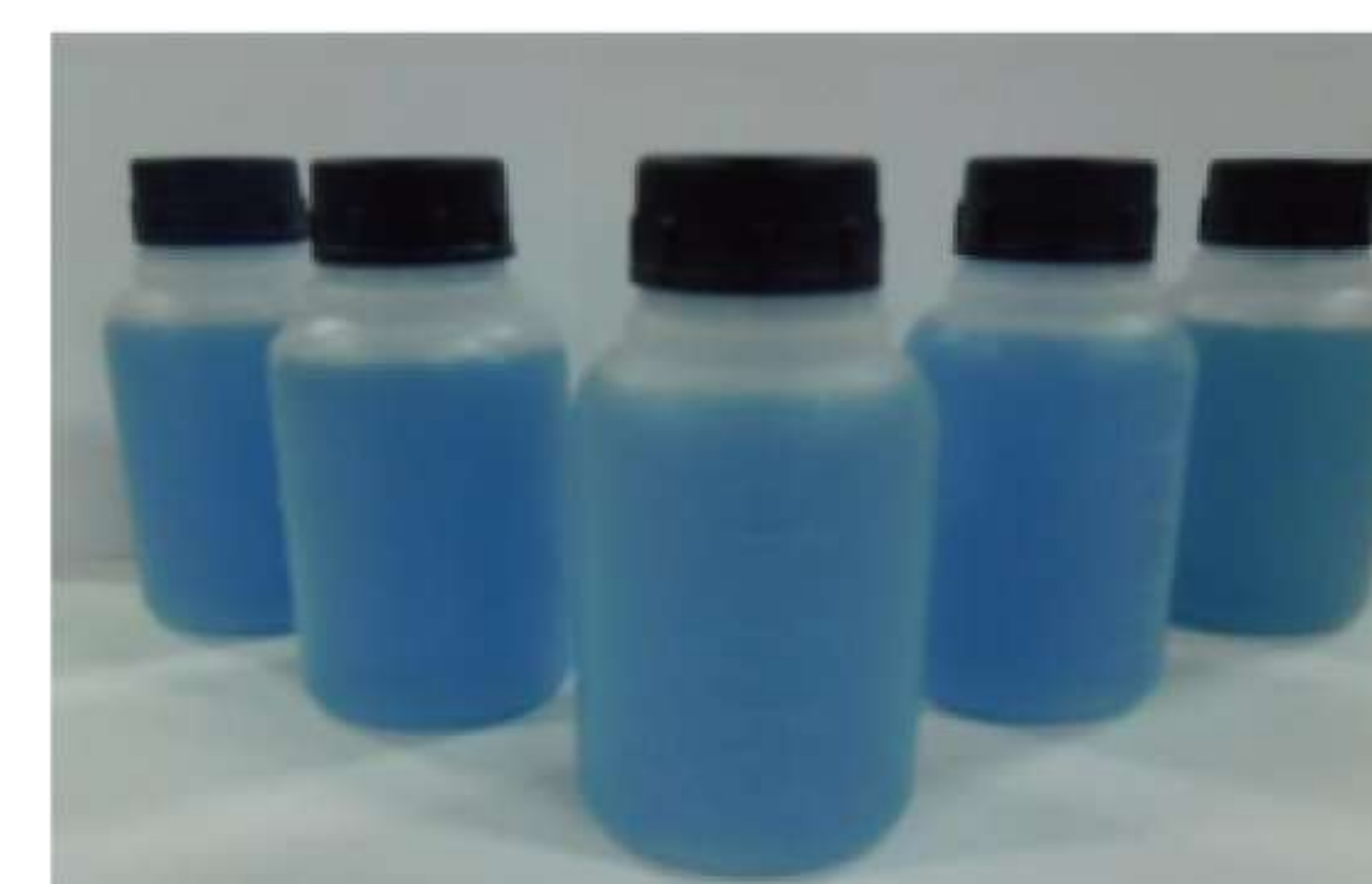
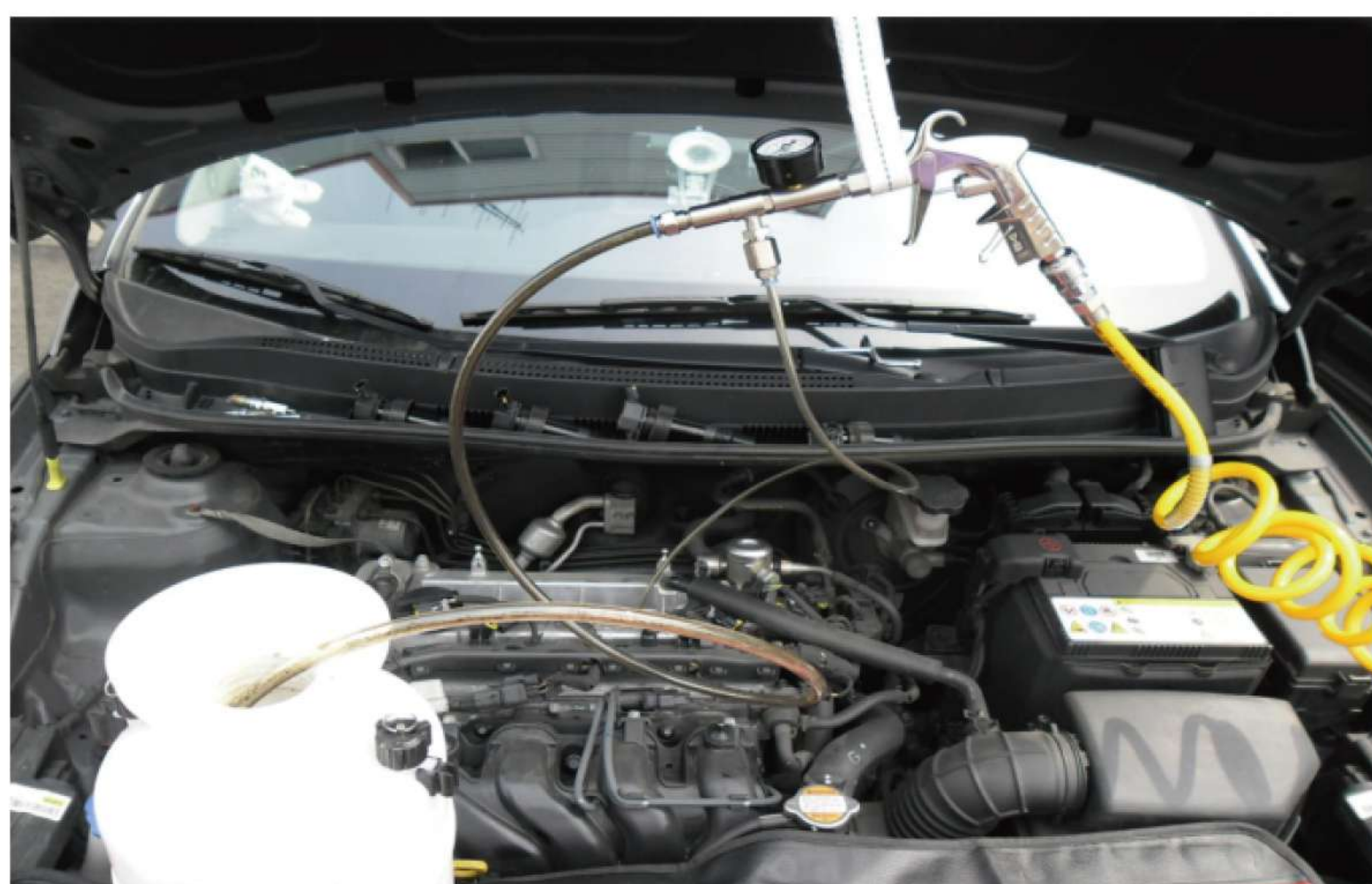
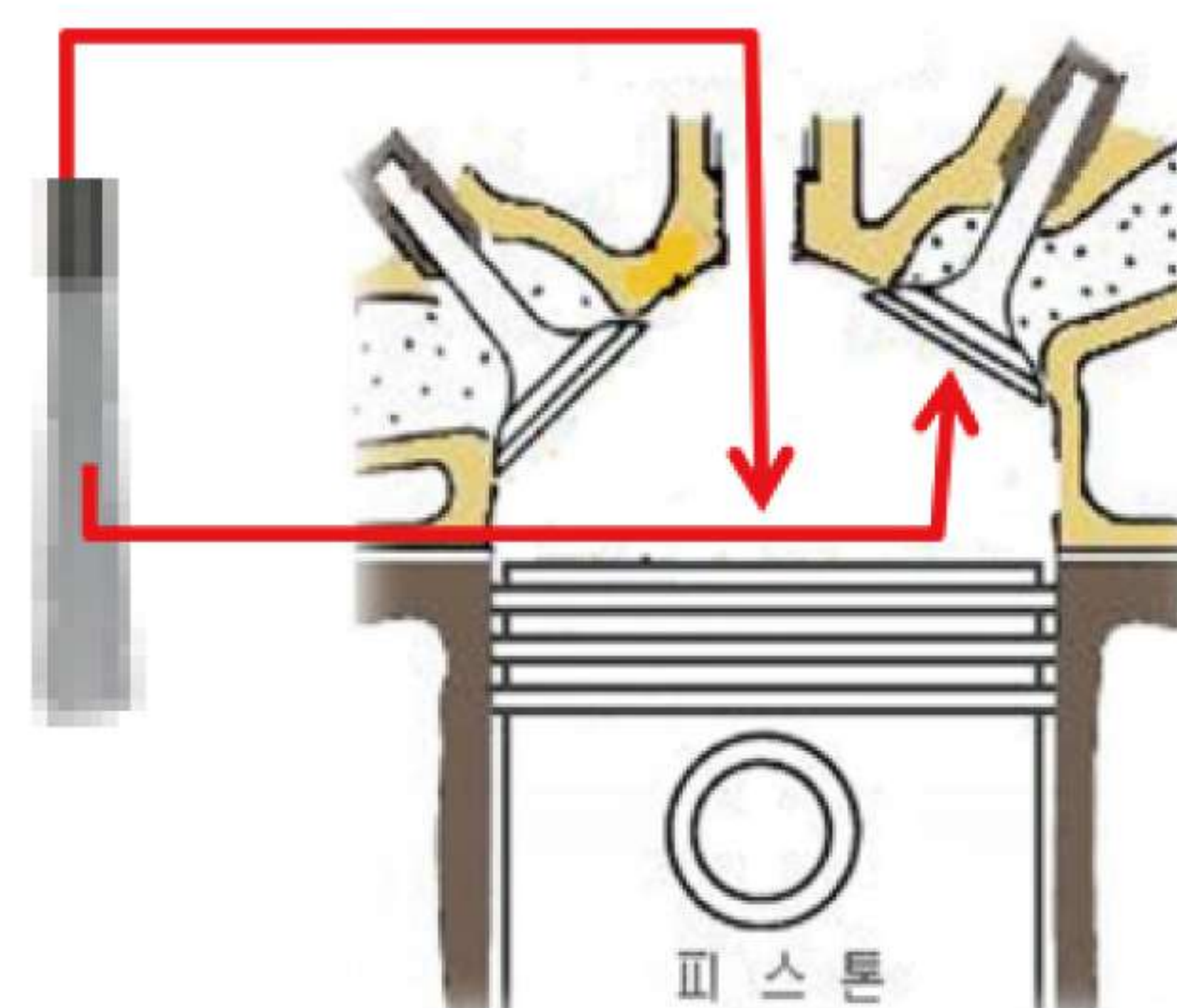
### Range of Cleaning

- ◆ Piston Head and exhaust valve
- ◆ Intake valve & Cylinder Head(Gasoline / Diesel)

### Engine Clean Kit

- Insert the cleaner into spark plug hole and clean piston head and exhaust valve seat

**Brush**





## Chemicals(Additive)



### Water Based Throttle body & Intake Manifold Cleaner

professionally formulated to safely blast away gum and varnish from air throttle plates and throttle plate shafts. It helps restore engine performance, by quickly removing cylinder carbon, gums and varnishes from the air intake components without the need to dismantle. Cleans air throttle plate shafts. Safely removes gum and varnish deposits. Improves air flow for smoother idling. Restores fuel economy. Lubricates air-intake throttle plates. Protects against rust and corrosion. Stops engine Knock and run-on. Cleans positive crankcase ventilating valves. Assures proper air/fuel ratios.

- 500ml, 300ml(15EA / Box)
- Value for money
- No need to dismantle engine head or others part
- Fast(around 20 min to 30 mins)
- Easily performed by ordinary mechanics
- Safe and effective
- Can be easily accepted as a regular maintenance service of intake manifold

### DPF REMOVAL

DPF REMOVAL is a Patented, liquid bimetallic platinum & cerium catalyst, diesel fuel additive specifically formulated to clean blocked DPF's(Diesel Particulate Filters) as well as improve the operation and reduce maintenance of the DPF & emissions control systems in diesel engine applications. It cleans and assists in regeneration of diesel particulate filters(DPF's), reduces engine particle matter, cleans injectors, improves diesel fuel combustion improving fuel economy, engine efficiency and maximizing catalyst life.

- 1000ml(12EA / Box)
- Permanent and complete filter cleaning during driving.
- No assembling or disassembling, no standing time, no troubles
- Reduces ignition temperature of the soot collected in the diesel particle filter no formation of secondary emissions



### Engine oil additive

High temperature and high pressure friction index reduction. It increases the engine output due to the improvement of the lubricity and extends engine oil life and noise. It is excellent for reducing the smoke.

- 500ml, 300ml(15EA / Box)



KOENG CO., LTD. [www.koeng.com](http://www.koeng.com)

Add : B-806, SK Twintech, 119 Gasan digital 1-ro, Geumcheon-gu, Seoul, Korea  
T : +82 2 838 6300 F: +82 2 839 4700 E-mail: [export@koeng.com](mailto:export@koeng.com)

The Excellent Company  
Brand of Seoul





# Chemicals(Additive)



## Engine Conditioner

A dirty intake system can rob an engine power and performance by causing rough idling hesitation, stalling and poor gas milage. Throttle body cleaner unique blend of special solvents. Quick and easily dissolve gum. Vanish and carbon deposit to restore intake system and engine performance, Also A great cleaner for throttle plate are or fuel infected vehicles, vacuum piston and cylinder and PCV valve. Use throttle body cleaner & fuel additive cleaner to clean internal parts.

- 300ml(12EA / Box)
- Clean deposits from ethanol and degraded fuel
- Removes gum and varnish
- Maximizes horsepower
- Restores startability
- Helps improve fuel economy
- Reduces pollution Will not harm catalytic converters
- Safe for oxygen Sensor



## Engine oil flush

- 300ml(15EA / Box)
- **PURPOSE** : To eliminate various carbon from the internal engine's oil contact surface
- **USE METHOD** : Add one bottle to engine oil directly, based on 6 liter and start engine about 10-15 minutes, then the change oil.



## Molybdenum Coating

- 300ml(15EA / Box)
- **PURPOSE** : To coat damaged cylinder liner and wall & all oil contact surface by MoS2 nano coating material
- **USE METHOD** : Add one bottle to engine oil directly, based on 6 liter



## Water Zero

- 300ml(15EA / Box)
- **PURPOSE** : To eliminate water from the fuel
- **USE METHOD** : Add 300ml one bottle for 60 liter fuel basis for both gasoline and Diesel fuel

- **PURPOSE** - Avoid sunshine and keep in well ventilated area
- Keep over 2 meters from the fire sources
- Do not shock or drop the bottle



## Chemicals(Additive)



### Efficient Engine Protector (Gasoline Additive) Car

Korean fuel-saving additive and has helped cars and passenger cars run farther and faster.

- 350ml(12EA / Box)
- Improve combustion, clean combustion, burn out fuel and clean carbon black in the combustion chamber.
- Increase engine efficiency, make the machine run smoother, more volatile, accelerate faster and stronger.
- Reduce fuel consumption: Average 5% -10% reduction for gasoline and diesel oil and more than 10% for FO oil (test results and actual use on cars, motorcycles, generators, boilers, incinerators, boats ...).
- Completely clean carbon soot residue for injectors, combustion chambers, etc thanks to clean burning, burn out fuel, help minimize maintenance costs, prolong engine life.
- Reducing toxic emissions causing environmental pollution: CO, CO<sub>2</sub>, SO<sub>x</sub>, NO<sub>x</sub> ...



### Efficient Engine Protector (Gasoline Additive) Motorcycle

fuel additive product is a new highly efficient way to save fuel internal combustion engine for gear vehicles, scooters, displacement vehicles.

- 50ml(10EA / Box)
- Accessories for motorcycle.
- Strengthen cleaning of the combustion chamber, fuel injection nozzles.
- Clean the receiving valve.
- Reduce emissions into the environment.
- Save fuel.
- Reduces tremor and engine noise.
- Extend vehicle life.