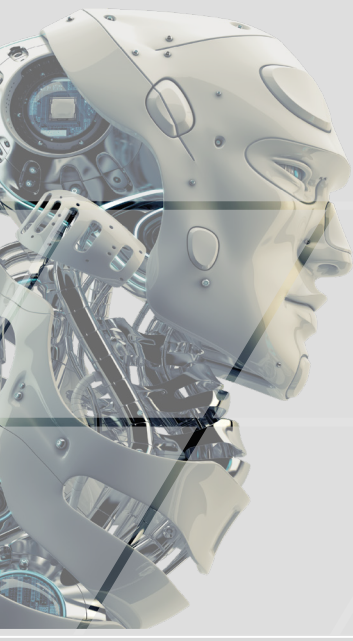




ZETA-ERRE



WWW.ZETAERRE.EU

ADVANCED TRANSMISSION

22 YEARS OF INNOVATION AND TECHNOLOGY



MISSION

Providing to the market a reliable and competitive product, offering the possibility to replace the defective component only instead of replacing the whole drive shaft.



COMPANY

ZETA-ERRE is well known thanks to its high quality standards during all the production processes. From reverse engineering based on OE samples, up to tolerances final checks, to warranty the correct assembly for every single part.



ISO 9001:2008

CERTIFIED COMPANY
UNI EN ISO 9001:2015

SERVICES



A QUALIFIED TEAM OF EXPERTS IS AVAILABLE AT ZETA-ERRE TO SATISFY ALL REQUESTS FROM MARKET.



AVAILABLE STOCK FOR
JUST IN TIME
DELIVERIES



OVER
90% OF
EUROPEAN
CAR PARK
AVAILABLE



R&D



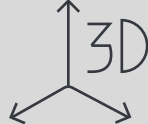
QUALIFIED
TEAM
FOR ANY
TECHNICAL
REQUEST



RANGE
UPDATE
BY A
CONSTANT
RESEARCH
AND
DEVELOPMENT

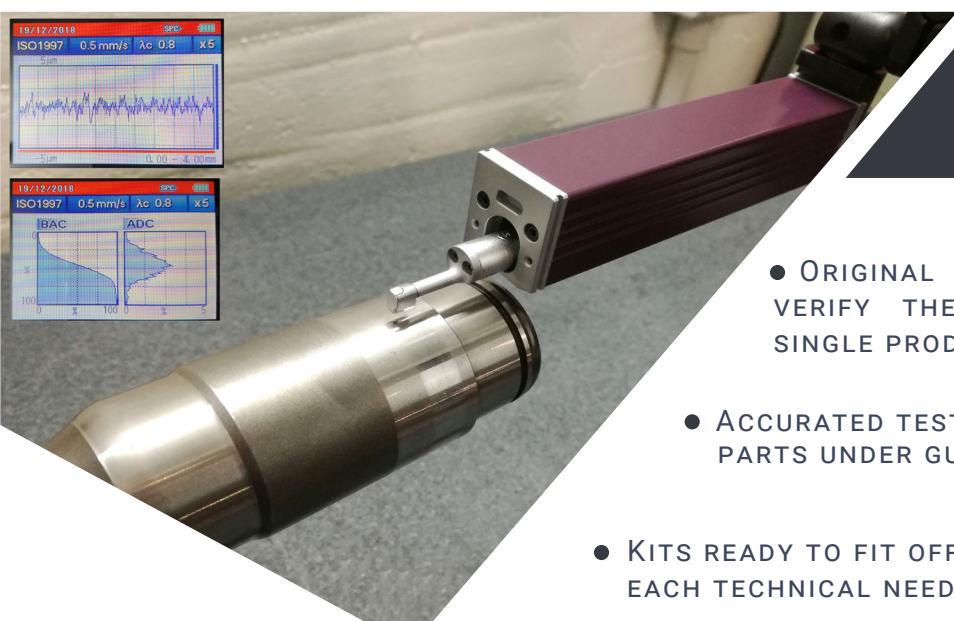


DEVELOPMENT
ACCURATELY
BASED ON
OE
SPECIFICATION



DESIGN

- SKILLED SPECIALISTS DEVOTED TO REVERSE ENGINEERING DEVELOPMENT OF COMPONENTS
- DETECTING THE STRETCH OF STRESS THROUGH FEM ANALYSIS
- ACCURATED GEOMETRICAL AND ASSEMBLING TOLERANCES TO WARRANTY A HIGHER STANDARD



QUALITY CHECK

- ORIGINAL SAMPLES USED TO CONTROL AND VERIFY THE CORRECT ASSEMBLY FOR EVERY SINGLE PRODUCT
- ACCURATED TEST TO IDENTIFY POSSIBLE DEFECTIVE PARTS UNDER GUARANTEE
- KITS READY TO FIT OFFER THE CORRECT SOLUTION FOR EACH TECHNICAL NEED

PRODUCT RANGE

MORE
THAN
2400
ACTIVE
ITEMS



PRODUCT LINES

OUTER
CV JOINTS



DRIVE
SHAFTS



TRANSMISSION
AXLES



INNER
CV JOINTS



TRIPODS



OUR PARTNERS

TecAlliance
TecDoc Inside

Kromeda
a Solera company

inforicambi

ClipParts
CATALOGO ELETTRONICO

WWW.ZETAERRE.EU

INFO@ZETAERRE.PARTS

