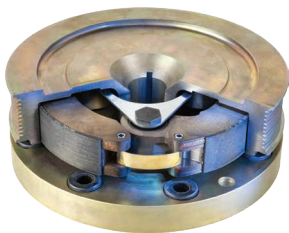


Clutches – Refrigeration System



A clutch for every application

EATON

Powering Business Worldwide

Centrifugal clutches for road transport temperature control units

Transport refrigeration equipment, cold chain monitoring solutions and replacement components help protect global food supply and other perishable cargo. Centrifugal clutch is one of the key components to drive the compressor of a refrigeration unit. It acts as a coupling element to transfer torque from the engine to the compressor. The engine builds up sufficient torque and transmits then torque to compressor.

Eaton supplies centrifugal clutches to the major OEMs who manufacture temperature control units for the commercial refrigerated trucks and trailers industry.



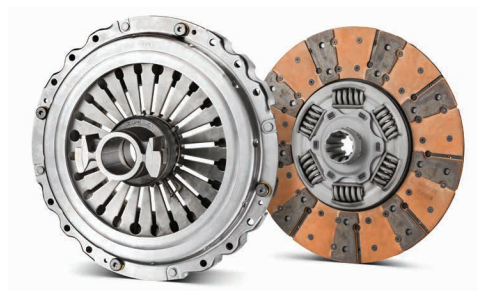
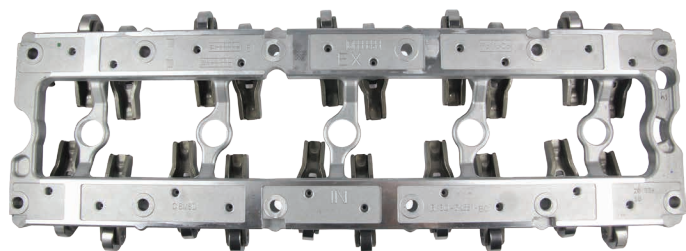
Features:

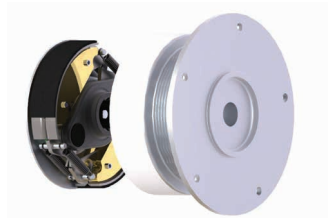
- Provide smooth and automatic engagement at given speed
- No external power source needed
- Prevent the stalling of the engine
- Absorb vibration
- Dry friction technology with Non-asbestos material
- Enable to handle higher torque at lower rpm
- Wide operating temperature range (from -30 °C up to +80 °C)
- 100% tested for torque and engagement speed
- The engagement speed can be precisely controlled by design

Your truck's driveline is only as strong as its weakest link.

Every day, you're thinking about what's best for your customer. Fleets rely on you to perform the maintenance and repairs that keep their vehicles on the road. And you take pride in your workmanship, knowing that there is no substitute for quality. So instead of cutting corners with less expensive, lower quality products, you should invest in genuine Eaton aftermarket parts designed and tested to exacting standards for optimal performance.

Eaton's Vehicle Group provides more than 100 years of expertise as an original equipment manufacturer to the global automotive and commercial vehicle industry. Its products and solutions for OEM and Aftermarket are designed to offer driveline expertise through its clutch, transmission and traction modifying device as well as to improve a vehicle's overall efficiency, performance and power with products such as superchargers, engine valves, valvetrain systems and emission control components. Insist on genuine Eaton parts and get back on the road with confidence. Because that's what matters.





Twin Shoe Centrifugal Clutch CL70P40251AM

Manufacturer	Carrier
OEM reference number	50-01171-23
Refrigeration system	Supra 444 / 450S
Service kit part number	CL56P40258AM



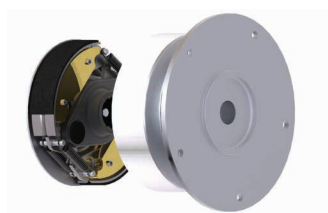
Twin Shoe Centrifugal Clutch CL70P40252AM

Manufacturer	Carrier
OEM reference number	50-01171-24
Refrigeration system	Supra 850
Service kit part number	CL56P40274AM



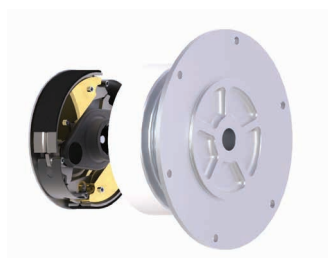
Twin Shoe Centrifugal Clutch CL70P40253AM

Manufacturer	Carrier
OEM reference number	50-01171-22 / 50-50051-04
Refrigeration system	Supra 900 Series / 1050 / 1150 / 1250 / Oasis 350
Service kit part number	CL56P40264AM



Twin Shoe Centrifugal Clutch CL70P40254AM

Manufacturer	Carrier
OEM reference number	50-01171-20 / 50-01165-01
Refrigeration system	Supra 750 / 722 / 744 / Oasis 250
Service kit part number	CL56P40264AM



Twin Shoe Centrifugal Clutch CL70P40255AM

Manufacturer	Carrier
OEM reference number	50-01171-25 / 50-60231-01
Refrigeration system	Supra 950
Service kit part number	CL56P40264AM



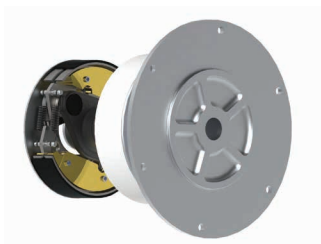
Twin Shoe Centrifugal Clutch CL70P40256AM

Manufacturer	Carrier
OEM reference number	50-01171-21 / 50-60029-00
Refrigeration system	Supra 422 / 522 / 550 / 822 / 850 / Oasis 150
Service kit part number	CL56P40273AM



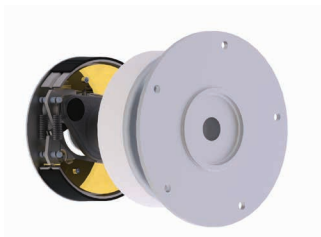
Twin Shoe Centrifugal Clutch CL70P40261AM

Manufacturer	Carrier
OEM reference number	50-01171-00
Refrigeration system	Supra 600 / 700



Twin Shoe Centrifugal Clutch CL70P40262AM

Manufacturer	Carrier
OEM reference number	50-01171-02
Refrigeration system	Supra 922



Twin Shoe Centrifugal Clutch CL70P40263AM

Manufacturer	Carrier
OEM reference number	50-01171-01
Refrigeration system	Supra 500 / 800



Twin Shoe Centrifugal Clutch CL70P40265AM

Manufacturer	Carrier
OEM reference number	50-01179-00 / 50-SKA-11118-20
Refrigeration system	Supra 600 / 700



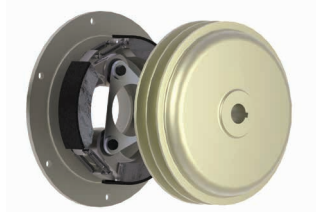
Twin Shoe Centrifugal Clutch CL70P40266AM

Manufacturer	Carrier
OEM reference number	50-01179-01 / 50-SKA-11118-21
Refrigeration system	Supra 500 / 800



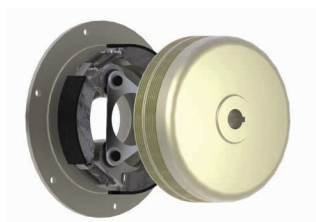
Twin Shoe Centrifugal Clutch CL70P40267AM

Manufacturer	Carrier
OEM reference number	50-01179-02 / 50-SKA-11118-22
Refrigeration system	Supra 900



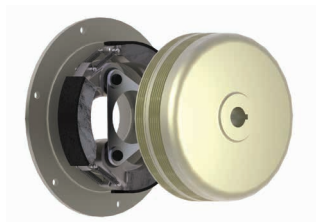
Triple Shoe Centrifugal Clutch CL70P50257AM

Manufacturer	Carrier
OEM reference number	50-60196-01 / 50-60196-02
Refrigeration system	Maxima



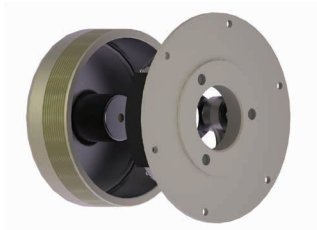
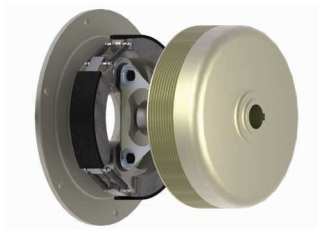
Triple Shoe Centrifugal Clutch CL70P50259AM

Manufacturer	Carrier
OEM reference number	50-60445-01
Refrigeration system	Vector 1350 MY2012



Triple Shoe Centrifugal Clutch CL70P50268AM

Manufacturer	Carrier
OEM reference number	50-60445-02 / 4168042
Refrigeration system	Vector 1350 MY2016
Service kit part number	CL56P50290AM



Triple Shoe Centrifugal Clutch CL70P50269AM

Manufacturer	Carrier
OEM reference number	50-60477
Refrigeration system	NDTP
Service kit part number	CL56P50290AM



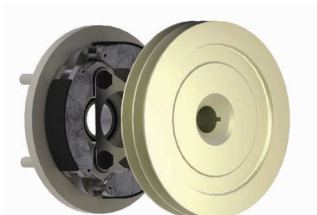
Triple Shoe Centrifugal Clutch CL70P50275AM

Manufacturer	ThermoKing
OEM reference number	5D49484G02
Refrigeration system	SMX



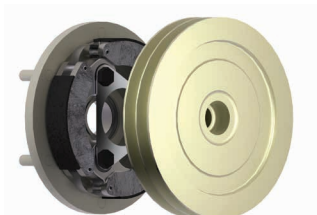
Triple Shoe Centrifugal Clutch CL70P50276AM

Manufacturer	ThermoKing
OEM reference number	5D55642G02
Refrigeration system	SMX



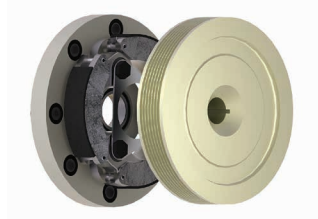
Triple Shoe Centrifugal Clutch CL70P50277AM

Manufacturer	ThermoKing
OEM reference number	5D49485G02 / 1070340
Refrigeration system	SMX



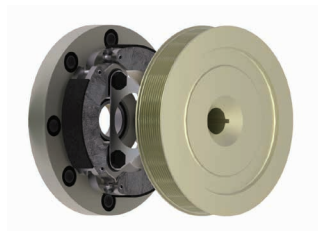
Triple Shoe Centrifugal Clutch CL70P50278AM

Manufacturer	ThermoKing
OEM reference number	2C44638G02 / 1070341
Refrigeration system	SMX
Service kit part number	CL56P50284AM



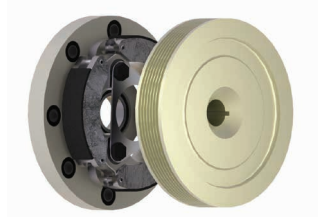
Triple Shoe Centrifugal Clutch CL70P50281AM

Manufacturer	ThermoKing
OEM reference number	5D55642G03 / 1070344
Refrigeration system	SL100/200/300/400



Triple Shoe Centrifugal Clutch CL70P50282AM

Manufacturer	ThermoKing
OEM reference number	2E06824G01 / 1070399
Refrigeration system	SLXe / SLXi



Triple Shoe Centrifugal Clutch CL70P50283AM

Manufacturer	ThermoKing
OEM reference number	1E20724G01 / 1070364
Refrigeration system	SLX 100/200/300/400

Eaton's customer service center in EMEA

Tel.: +48 58 532 9623

VGAftermarketEMEA@eaton.com



Powering Business Worldwide

Eaton

Eaton Truck Components Sp. z o.o.
30 Stycznia 55, Tczew, Poland
Tel: +48 58 53 29 623
VGAftermarketEMEA@eaton.com
www.eaton.com

© 2021 Eaton
All Rights Reserved
August 2021

Eaton is a registered trademark.

All other trademarks are property
of their respective owners.

Follow us on social media to get the
latest product and support information.

